

NX

NX 300h / NX 300



Overseas model shown.



The pursuit of knowledge.

NX	» P2
EPISODE 6	» P15
TAKUMI	» P49
COLOURS & TRIMS	» P50
LEXUS OWNERSHIP SOLUTIONS	» P59
BENEFITS OF ENCORE	» P61
SPECIFICATIONS	» P62



RT







Current navigation mapping database encompasses major capital and primary national road networks and offers some coverage in regional areas.





CONCEPT



Premium Urban Sports Gear.
The NX injects fresh expressions of individuality,
exhilaration and utility into urban living.



» EPISODE







The NX was developed around the core concept of 'Premium Urban Sports Gear', a next-generation Lexus that applies an urban focus to luxury SUVs. 'Premium Urban' aims to create refined solutions to the mobility demands of city living, offering advanced technologies, excellent environmental performance and refined Lexus features that provide outstanding quality and driving pleasure. 'Sports' expresses a dynamic and active attitude that shapes the aggressive and very individual styling, and injects a sporting edge into driving with sport-honed acceleration, control and handling. It is intrinsically linked with 'Gear', a meticulous

focus on refining every detail to offer the advanced functionality and effortless utility associated with the very best sports equipment, together with the eye-catching design and embrace of advanced technologies that set iconic 'Sports Gear' apart. The result is a game-changing, urban-focused SUV with the acceleration, agility and handling to effortlessly negotiate city traffic, utility to meet the ever-changing needs of an active and dynamic lifestyle, fuel efficiency that embodies environment-aware values, and sophisticated features and refined detail that are Lexus hallmarks.



DESIGN



Fusing superb agility and dynamic individuality with spacious functionality creates a fresh sporting spirit.



» EPISODE



EXTERIOR

The fusion of condensed dynamism with edgy solid surfaces powerfully expresses the superb agility and dynamic individuality of this fresh sporting spirit.



INTERIOR

The blend of functional and structural beauty and attention to detail in the sporty interior further boosts your driving pleasure.



PERFORMANCE



Out on the streets, the NX's poise, responsiveness and exhilaration spark a relish for city driving.

3

» EPISODE





Chassis

The foundation of the NX's responsive sporty handling is a lightweight, high-rigidity body structure made from hot-stamp, high-tensile steel and aluminium with strategically positioned reinforcements. The use of innovative production technologies, including laser screw welding and body adhesives together with extensive spot welding, enhances the rigidity of panel joints and contributes to the excellent handling, refined comfort and quiet ride.



Pre-loaded differential

This innovative differential pre-loads torque under light loads or low rotational speed, contributing to highly precise steering for excellent straight-line stability and acceleration performance.



Aerodynamics

The NX's superb aerodynamics contribute to fuel-efficient performance and quiet comfort in the cabin, even during high-speed driving. Careful attention paid to reducing drag, including an integrated rear spoiler, spats for all four wheels, and the engine, floor, lower arm and rear underbody covers contributes to a smooth airflow.



Drive mode select

Drive mode select provides integrated control of multiple systems to let you tune performance to suit your driving style. On vehicles equipped with AVS (Adaptive Variable Suspension system), you can select and change between Normal, Eco, Sport S and Sport S+ modes. In addition, Custom Mode enables drivers to set their preferred settings for the powertrain, AVS, EPS (Electric Power Steering) and air-conditioning.



Front and rear suspension

The compact and highly rigid MacPherson strut front suspension and double wishbone rear suspension were optimised to deliver agile handling and luxurious ride comfort. A close focus on individual components included refining the coil springs, stabilisers, shock absorbers, and suspension bushings.



S-VSC (Steering-assisted Vehicle Stability Control)

S-VSC operates in conjunction with the EPS, ABS and TCS to limit and distribute drive power and assist steering torque to help stabilise vehicle behaviour and direction, to provide excellent stability and control in various driving conditions.*

*EPS: Electric Power Steering, S-VSC: Vehicle Stability Control, ABS: Anti-lock Brake System, TRC: Traction Control System.

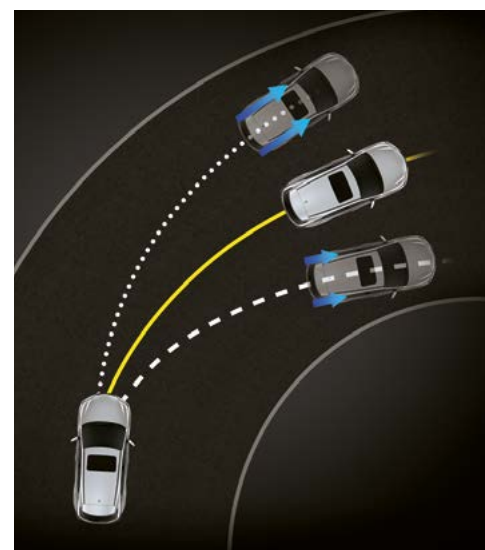


2.0-litre direct injection turbocharged engine
 This newly developed engine delivers a sophisticated fusion of exhilarating driving performance and excellent fuel efficiency. The compact high-efficiency twin scroll turbocharger is combined with an Atkinson Cycle engine with Dual VVT-i (Intake side: VVT-iW). To realise optimum combustion, the innovative D-4ST features both direct and port injectors. This advanced Lexus engineering helps generate high torque from low through to high rpm ranges, high level responsiveness, as well as enhance fuel economy.*¹



6 Super ECT
 The newly developed, super intelligent 6-speed automatic transmission features advanced drive-force-on-demand control logic that calculates the required engine torque to realise a high level of vehicle control in line with accelerator operation, together with a sophisticated acceleration feeling. Multi-mode Automatic Transmission and G AI-SHIFT control further contribute to driving pleasure.*²

Dynamic Torque Control AWD
 The electronically controlled system continually varies distribution of drive power to the rear wheels, switching from front-wheel drive to AWD to realise handling stability to suit driving conditions, together with excellent fuel economy.*³



Hybrid system
 For dynamic driving and exceptional environmental performance, Lexus Hybrid Drive intelligently combines the power of a highly efficient 2.5-litre gasoline engine with electric power from a high-output motor.



2.5-litre 4-cylinder engine
 The compact and lightweight Atkinson Cycle engine with VVT-i delivers high performance together with excellent fuel efficiency, quiet operation and significantly reduced emissions.*¹



E-Four (Electric four-wheel drive)
 E-Four uses a rear motor that operates independently from the front motor to optimise distribution of front and rear drive force, delivering excellent vehicle stability in a wide range of driving situations.



*¹VVT-i: Variable Valve Timing-intelligent. VVT-iW: Variable Valve Timing-intelligent Wide. D-4ST: Direct injection 4 stroke gasoline engine Superior version with Turbo.
 *²ECT: Electronic Controlled Transmission. AI: Artificial Intelligence.
 *³AWD: All Wheel Drive.
 Please inquire at your local dealer for details on the availability of features.

FEATURES



The NX enhances your quality of life with its confident blend of assertive beauty, intuitive function, and refined operation.



» EPISODE



The 3-eye Bi-Beam LED headlamps that symbolise sharp sporty performance, together with wide L-shaped LED rear combination lamps that seem to stand out from the back door, express an individuality that can't be hidden, even from a distance. In the cockpit, switches are laid out for easy operation to enable the driver to focus on driving.

The spacious interior is designed for relaxation in all seats, enveloping the driver and passengers in comfort. An exhilarating driving experience awaits as soon as you've loaded your bags into a roomy luggage space that accommodates various uses.



3-eye Bi-Beam LED headlamps

The ultra-small 3-eye Bi-Beam LED headlamps combine advanced design with excellent light distribution. LEDs in the sequential turn signal lamps illuminate sequentially in a flow from the inner side to the outside of the vehicle.



Door mirrors

Combining form with function, the sculptured door mirrors embody the strength and luxury of the exterior design, reduce wind noise through excellent aerodynamics, and provide an excellent field of view.

LED rear combination lamps

The distinctive Lexus L-shaped lamps look like a brilliant crystal, even in daytime. The wide LED sequential turn signal lamps illuminate from the inner to the outer side of the lamp to intuitively convey the turn direction.



Moonroof

The low-profile moonroof expands the feeling of space in the cabin. It opens and closes and tilts up and down at the touch of a button. Fins integrated on the deflector help to reduce wind noise.





Multimedia coordination function

This function coordinates the display of information from the multimedia systems on the 10.3-inch EMV (Electro Multi-Vision) display in the centre of the instrument panel and the 4.2-inch colour TFT (Thin Film Transistor) multi-information display in the meter cluster. For convenience, audio system information, incoming mobile calls, and some navigation on the EMV display can also be displayed on the multi-information display and controlled using switches on the steering wheel.

Meters

The 4-dial meter combines a three-dimensional analogue speedometer and tachometer with a digital multi-information display that changes between blue and red illumination to highlight the drive mode selected.

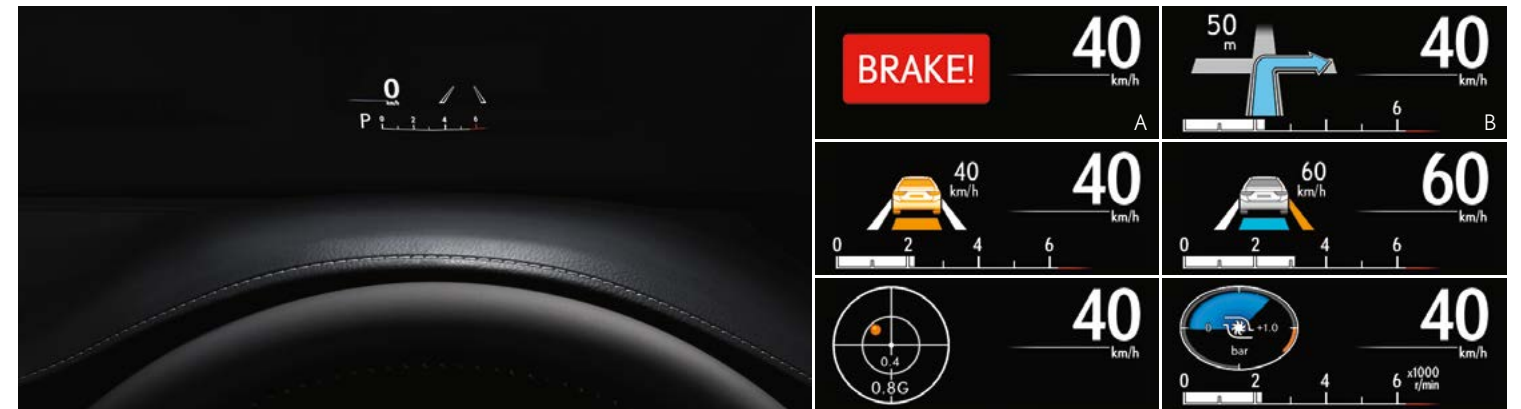
Remote Touch Interface

Simple touchpad operation lets users interact intuitively with the navigation and audio systems on the 10.3-inch EMV display, providing easy control of the systems.



Colour head-up display

The wide colour head-up display projects a range of frequently checked information on the lower windshield glass in the driver's line of sight, including the current speed, tachometer, audio system, and more.



Wireless charger*

This thoughtful charging tray in the centre console box enables wireless charging of batteries in Qi-compatible smartphones and electronic devices simply by placing them on the charger tray.

Image A: Pre-Collision System is a driver assist feature only and is not a substitute for safe driving practices. Driver remains responsible at all times for safe driving.
 Image B: Current navigation mapping database encompasses major capital and primary national road networks and offers some coverage in regional areas.
 *Only Qi-supported devices are compatible. Refer to your device manufacturer to determine your device's compatibility. Some devices may require the purchase of a Qi-supported accessory to enable wireless charging.



Luggage space

Contrasting the athletic individuality of the stylish exterior, the ample capacity of the luggage space highlights the practical convenience of the packaging and smart design of the cabin. The back door opens wide to provide easy access to a flexible space that can accommodate three full-set golf bags or different sizes and combinations of suitcases, while accommodating passengers in the rear seats.



Power folding rear seats

Enhancing versatility and convenience, the rear seats can be reclined at the touch of a button integrated into each rear seat. They can also be folded flat or upright using switches in the rear seats, luggage space and driver-side instrument panel.



Power back door

Convenient controls for the power door are set in the instrument panel and Electronic Key, as well as a closing switch in the bottom of the door. A memory function lets users set the opening clearance.



Mark Levinson® audio system

The Mark Levinson® Premium Surround Sound System features a compact 12-channel amplifier to drive 14 GreenEdge ultra high-efficiency speakers that generate outstanding output while significantly reducing energy consumption. A 5.1/7.1-channel surround system contributes to the high-fidelity, concert hall-quality sound. The Auto Volume System automatically adjusts the audio system volume to complement the genre of each song as it is played.



USB ports/mini-jack/power outlets*

Two USB ports and a mini-jack support plug-and-play use of music players. Conveniently positioned power outlets in the centre console box and luggage space enable the charging of various devices and portable gear.



Cupholders

The cupholders for the front seats can hold two drink bottles or a handled mug. The grip of the cupholder mats makes it easier to open a bottle lid with one hand.



Sunglasses holder

The sunglasses holder is conveniently located under the palm rest. The removable magnetic lid stores away in the centre console box. A flocked surface inside the holder protects sunglasses against scratching.





SAFETY



Anticipating the unexpected, the NX cocoons occupants with advanced active and passive safety measures.

5

» EPISODE



LEXUS SAFETY SYSTEM +

Pre-Collision System*³

When the millimetre-wave radar and monocular camera sensors detect a collision with a vehicle or pedestrian*³ ahead is likely, it alerts the driver and activates pre-collision brake assist when the driver depresses the brake pedal. If the driver cannot depress the brake pedal, it activates the pre-collision brakes.



LDA (Lane Departure Alert) with Steering Control*¹

LDA with Steering Control alerts the driver with a buzzer and on the multi-information display if the system judges the vehicle is about to cross lane markings without using the turn signals, and assists steering to avoid lane departure.

AHB (Automatic High Beam System)*¹

AHB helps safe driving at night by instantly switching from high to low beam when the lights of an oncoming vehicle, or the tail lights of a vehicle in front, are detected.

Dynamic Radar Cruise Control*¹

In addition to maintaining a constant speed, Dynamic Radar Cruise Control uses the millimetre-wave radar to help detect a vehicle driving ahead and maintain an appropriate distance between vehicles.



Blind Spot Monitor System*¹

When the quasi-millimetre-wave radars in the rear bumper detect vehicles in adjacent lanes that aren't visible in the door mirrors, the system activates a warning indicator in the relevant door mirror the moment a vehicle enters this blind spot.



RCTA (Rear Cross Traffic Alert)*¹

To assist safe reversing, RCTA uses quasi-millimetre-wave radars in the rear bumper to detect approaching vehicles in difficult-to-see areas behind the vehicle. When an approaching vehicle is detected, RCTA alerts the driver using a buzzer and indicator in the relevant door mirror.

Wide-angle cornering lamps

Wide-angle cornering lamps provide additional illumination in the direction of travel to the side and above, helping to enhance pedestrian visibility when turning at intersections.



SRS airbags

The NX features dual-stage SRS airbags (Front seats), SRS knee airbag (Driver's seat), an SRS cushion airbag (Front passenger's seat) that supports seatbelt restraint by lifting the front edge of the seat cushion during a frontal collision, SRS side airbags (Front seats), and SRS curtain shield airbags (Front and rear door windows).*²



*¹This is a driver assist feature only and not a substitute for safe driving practices. Driver remains responsible at all times for safe driving.

*²The SRS (Supplemental Restraint System) airbags are supplemental devices to be used with the seatbelts. The driver and all passengers in the vehicle must wear their seatbelts properly at all times. Never install a rear-facing CRS (Child Restraint System) on the front passenger's seat. For a forward-facing CRS, it is recommended you use it in the rear seats. Please do not use accessories for the seats which cover the parts where the SRS side airbags should inflate. Such accessories may prevent the SRS side airbags from activating correctly, causing serious injury (Lexus genuine seat covers are specifically designed for models equipped with the SRS side airbags. To find out about availability in your area, please inquire at your local dealer). The photo shows all the SRS airbags activated for display purposes only (the SRS side and curtain shield airbags only inflate on the side of the collision in an actual accident). For details on these and other important safety features, be sure to read the Owner's Manual carefully.

*³Pre-Collision Safety system with Pedestrian Detection is a driver assist feature only and not a substitute for safe driving practices. Driver remains responsible at all times for safe driving. Pedestrians may not be detected in certain conditions including low and harsh light, where partially obstructed from view, where clothing or movement obscures or effects body contours, persons under 1 metre or over 2 metres tall and where carrying or pushing large objects.

Note: The system may not operate properly depending on the weather, road and vehicle conditions or other factors. Be sure to read the Owner's Manual carefully.

F SPORT



F SPORT evolves the Lexus sport DNA that finds its ultimate expression in the LFA supercar, enabling more drivers to experience its exhilarating performance and unique personality. It further refines the agile, powerful performance of the NX to create a feeling of oneness with the car that comes from its immediate response to the driver's intentions in various driving situations.



» EPISODE





A_Front mesh grille / B_Front bumper



Performance dampers

Performance dampers integrated into the front and rear of the NX F SPORT enhance rigidity and vibration damping performance, realising exceptional handling stability that is at the heart of sports driving enjoyment.



G_Meters & multi-information display / H_Steering wheel / I_Aluminium pedals / J_Shift lever knob / K_Trim / L_Scuff plates



F SPORT multi-information display

The multi-information display heightens your driving experience by displaying a G sensor with steering angle, accelerator opening and brake hydraulic pressure bars, and a turbo boost metre with oil temperature and pressure gauges.



F SPORT meters

Expressing dynamic sports performance, the exclusive analogue meters feature full-length illuminated needles, silver needle rings, and distinctive white scales evolved from the Lexus LFA supercar.



F SPORT front seats

The front sports seats blend refined comfort with firm support and excellent holding performance for sports driving. An innovative 'integrated foaming' manufacturing process eliminates wrinkles and movement of the upholstery.



C_Aluminium wheels / D_Door mirrors / E_Front fender emblems / F_Rear bumper



LEXUS
TAKUMI

The Lexus pursuit of perfection finds its finest expression in the master craftsmanship of the Takumi.



Every Lexus is based on an uncompromising approach to creating premium automobiles. Inspired by our 'Yet' philosophy, we seek innovation in every facet of engineering through a sophisticated fusion of seemingly incompatible ideas such as 'high performance yet high fuel efficiency'. In addition, unique Lexus styling is born of our L-finesse design language, a fine balance of 'Leading-edge' and 'finesse', so that every Lexus is not only captivating and luxurious but also highly refined.

Finally, every individual Lexus model is also measured against a set of internal standards covering design, performance, specifications and equipment to confirm it is distinctive and worthy of the Lexus emblem.

This pursuit of perfection is evident at every stage of the manufacturing process.

Every Lexus vehicle is created with masterful skill and attention to detail inspired by both traditional artisanship and state-of-the-art engineering. For example, at the Tahara plant in Japan, precision components made using leading-edge digital technology are assembled and finished by master craftsmen called Takumi whose technical expertise and sure senses are honed by decades of rigorous experience.

EXTERIOR COLOURS

*CA palette of colours, from the bold and luminous
to nuanced and sophisticated,
lets you express your individuality.*



White Nova <083>*¹(F Sport Wheels)[^]



Sonic Quartz <085> (F Sport Wheels)[^]



Titanium <1J7> (Sports Luxury Wheels)[^]



Onyx <212> (Sports Luxury Wheels)



Mercury Grey <1H9> (F Sport Wheels)[^]



Platinum Silver <1J4> (F Sport Wheels)[^]



Deep Metallic Bronze <4X2>*² (Luxury Wheels)[^]



Sparkling Meteor <8X9>*² (Luxury Wheels)[^]



Graphite Black <223> (F Sport Wheels)[^]



Vermillion <3R1> (F Sport Wheels)[^]



Cobalt Mica <8X1>*¹(F Sport Wheels)[^]

*¹Available on F SPORT package only.
*²Not available on F SPORT package.
[^]Paint featured is an option available at additional cost.
Lexus Australia reserves the right to vary and discontinue the current interior and exterior colours, trims and colour/trim/model combinations. Colours and trims displayed here are a guide only and may vary from actual colours due to printing/display process. See your Lexus dealer to confirm colour/trim/model availability when ordering your vehicle. Metallic/mica pearlescent paint is optional and subject to additional charges on most models.

INTERIOR TRIMS
The inside word on style.



LEATHER-ACCENTED | White Trim (Sports Luxury models only)



LEATHER-ACCENTED | Black Trim (Sports Luxury models only)



NULUX | White Trim (Luxury models only)



NULUX | Black Trim (Luxury models only)



LEATHER-ACCENTED | Dark Rose Trim (Sports Luxury models only)



LEATHER-ACCENTED | Ochre Trim (Sports Luxury models only)



NULUX | Dark Rose Trim (Luxury models only)



NULUX | Ochre Trim (Luxury models only)



LEATHER-ACCENTED | Black/Alabaster Trim (Sports Luxury models only)



LEATHER-ACCENTED | Rich Cream Trim (Sports Luxury models only)



NULUX | Black/Alabaster Trim (Luxury models only)



NULUX | Rich Cream Trim (Luxury models only)



F SPORT LEATHER-ACCENTED | White Trim (F Sport models only)



F SPORT LEATHER-ACCENTED | Black Trim (F Sport models only)



F SPORT LEATHER-ACCENTED | Black/Tuscan Sun Trim (F Sport models only)



F SPORT LEATHER-ACCENTED | Flare Red Trim (F Sport models only)



Lexus reserves the right to vary and discontinue the current interior and exterior colours, trims and colour/trim/model combinations. Colours and trims displayed here are a guide only and may vary from actual colours due to printing / display process. See your Lexus dealer to confirm colour/trim/model availability when ordering your vehicle.

TRIMS



LEATHER-ACCENTED | White Trim (Sports Luxury models only)



LEATHER-ACCENTED | Black Trim (Sports Luxury models only)



LEATHER-ACCENTED | Dark Rose Trim (Sports Luxury models only)



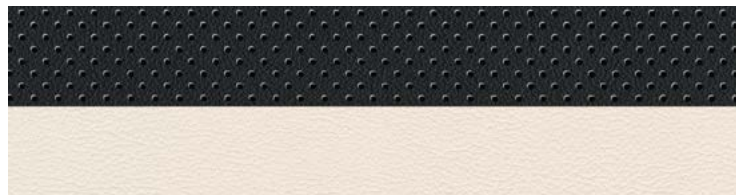
LEATHER-ACCENTED | Ochre Trim (Sports Luxury models only)



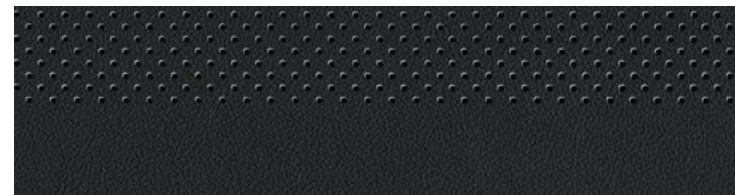
LEATHER-ACCENTED | Black/Alabaster (Sports Luxury models only)



LEATHER-ACCENTED | Rich Cream (Sports Luxury models only)



F SPORT LEATHER-ACCENTED | White Trim (F Sport models only)



F SPORT LEATHER-ACCENTED | Black Trim (F Sport models only)



F SPORT LEATHER-ACCENTED | Black/Tuscan Sun Trim (F Sport models only)



F SPORT LEATHER-ACCENTED | Flare Red Trim (F Sport models only)



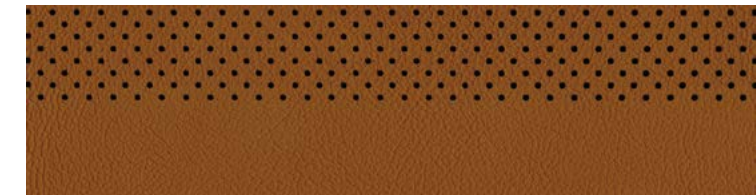
NULUX | White Trim (Luxury models only)



NULUX | Black Trim (Luxury models only)



NULUX | Dark Rose Trim (Luxury models only)



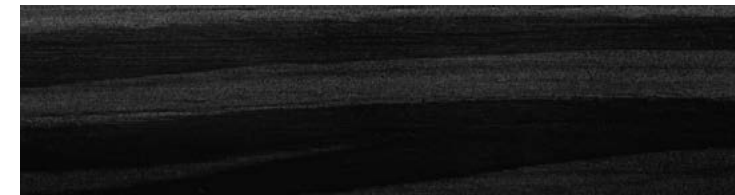
NULUX | Ochre Trim (Luxury models only)



NULUX | Black/Alabaster (Luxury models only)



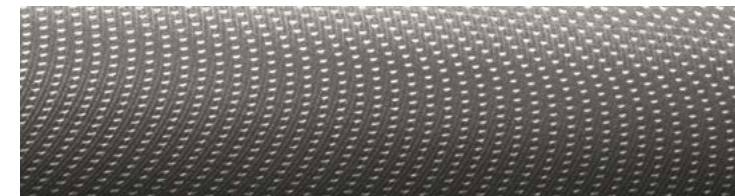
NULUX | Rich Cream (Luxury models only)



ORNAMENT | Shimamoku (Sports Luxury models only)



ORNAMENT | Bamboo (NX 300h Sports Luxury models only)



ORNAMENT | Silver Film (Luxury models only)



ORNAMENT | Naguri-style Aluminum (F Sport models only)



LEXUS OWNERSHIP SOLUTIONS

Lexus Ownership Solutions allows you to determine your finance costs and know the Guaranteed Future Value (GFV) of your vehicle from the outset. It offers you choice, control and certainty. In short, everything you'd expect from Lexus.*

How does Lexus Ownership Solutions work?

- You choose the deposit that best fits your needs.
- You choose your term.⁺⁺
- You decide on the estimated kilometres you think the vehicle will have travelled at the end of the term (the End Odometer). The End Odometer will also include any kilometres already on the vehicle.
- Lexus Financial Services (LFS) then determines the GFV⁺ of your vehicle and calculates your monthly repayments with a final payment equal to the GFV. The GFV is the minimum value of your Lexus at the end of your finance contract. So, if you choose to return your Lexus at the end of the term, LFS will pay you the GFV which will be put towards the remaining balance owing on your account (subject to fair wear and tear conditions and agreed kilometres being met).

The end of the term? Simply replace, retain or return.

At the end of your term you can choose to:

- Replace or sell your Lexus using the trade-in value or sale price to pay the remaining balance of your account.
- Retain your Lexus and simply pay the remaining balance of your account (including final payment).
- Alternatively, return your Lexus and, subject to fair wear and tear conditions and the agreed kilometres being met, we'll put the GFV towards the final payment on your account.

Choosing your deposit - what is best for you?

With the flexibility of Lexus Ownership Solutions, you can choose the deposit that best fits your current needs.

- If, for example, you have funds tied up in other investments, you can choose to finance your new Lexus with a zero deposit.^{††}
- Alternatively, by using a larger deposit, you can lower your monthly repayments.
- Better still, compared to other finance options over a similar term with no GFV or equivalent balloon final payment, Lexus Ownership Solutions can provide lower monthly repayments.⁺⁺⁺

Want more certainty?

With Lexus Ownership Solutions, you've got the reassurance that at the end of the term (subject to fair wear and tear and agreed kilometres being met) you'll never owe more than your vehicle's worth to LFS. In other words, you don't have to worry about what your vehicle will be worth in the future because you know its minimum value from the outset.⁺

What happens in the case of the unexpected?

If your vehicle incurs damage and does not meet the Fair Wear and Tear guidelines, LFS will give you the opportunity to have your vehicle repaired. Otherwise, LFS can organise the repairs and deduct the cost from your GFV. This adjusted GFV will then be the price that LFS will offer you if you return the vehicle at the end of your term. Of course, if you retain the vehicle, the condition doesn't matter, however, if you replace it or sell it privately, the condition will obviously impact your sale price.

So what does your accountant think?

Naturally, we think Lexus Ownership Solutions is an excellent, innovative way to put you in control of buying a new Lexus. That said, we suggest you seek independent advice to ensure Lexus Ownership Solutions is right for you.

Wouldn't it be great if Lexus Ownership Solutions was just the beginning?

Lexus' innovations and commitment to customer service extend well beyond Lexus Ownership Solutions. Once you purchase a new Lexus, you'll become a member of the Lexus Encore Privileges Programme and enjoy a host of exclusive benefits.[†]

For further details, simply visit your nearest Lexus dealer or see lexus.com.au/services/benefits/

⁺ The Guaranteed Future Value (GFV) is the minimum value of your new or approved demonstrator Lexus at the end of your finance contract, as determined by Lexus Financial Services (LFS). If you decide to return your car to Lexus at the end of your term, LFS will pay you the agreed GFV which will be put against your final payment, subject to fair wear and tear conditions and agreed kilometres being met. The information provided is general in nature. You should seek your own financial advice to determine whether Lexus Ownership Solutions is appropriate for your individual circumstances. Please speak with your Lexus Dealer for more information. Terms, conditions, fees and charges apply. Lexus Ownership Solutions GFV products are available to approved customers of Lexus Financial Services, a division of Toyota Finance Australia Limited ABN 48 002 435 181, AFSL and Australian Credit Licence 392536.

⁺⁺ Up to four years.

⁺⁺⁺ Total interest charges will be higher if a GFV or balloon final payment is selected.

[†] Terms and Conditions apply.

^{††} Approved applicants only. Terms and conditions apply. A deposit may be required for capacity reasons.



THE BENEFITS OF ENCORE

The benefits of being a Lexus owner go far beyond the intrinsic pleasure of driving the vehicle. From the moment you're handed the keys, you'll also be welcomed to the Lexus Encore Privileges Programme† - offering a range of exclusive initiatives that reaffirm our ongoing pursuit of perfection.

It means you'll enter a world of benefits that extends to every corner of life. A world where everything's just that much easier and works that much more seamlessly. And a world where, should trouble ever find you, you can always find a helping hand.

Take our After Sales Service as an example. Both our technology and technicians are at the forefront of automotive innovation. And our profound understanding of every single component of your Lexus means we can do more to ensure it's a pleasure to drive today, and in the long run. It's a world you've always belonged in. A privilege unique to Lexus drivers.

Silver service

Every aspect of your Lexus is built around your comfort and convenience, so it's fitting that when it's ready for a service, we'll come and pick it up from you and provide you with a complimentary loan car while we're inspecting. Plus, when we return your Lexus, it will have received a complimentary wash and interior vacuum.

Experience Lexus outside your vehicle

We're constantly striving to enhance the Lexus ownership experience. It's what we're known for. Our luxury events will be the perfect way to experience the Lexus lifestyle and network with other owners. Tickets may be limited, so be quick to secure your place.

Peace of mind

Wherever you are and whatever you're doing, you can relax, because with our Encore Privileges Programme, you have the 24-hour support of Lexus DriveCare.* We'll look after your car and, just as importantly, we'll look after you and your passengers.

See lexus.com.au/services/benefits for details.

†Encore Privileges apply for the period of the standard four-year / 100,000km factory warranty (whichever occurs first) or such other standard factory warranty offered by Lexus from time to time on new Lexus vehicles. They do not apply to any certified or extended warranty products. Lexus Australia reserves the right to change, without notice, any benefits specified. Benefits should be confirmed at the time of ordering with your authorised Lexus dealer. Benefits are subject to Encore terms and conditions. For further information on these conditions, please contact your Lexus dealer. To the extent permitted by law, Lexus Australia will not be liable for any damage, loss or expense incurred in relation to the benefits specified above (whether by way of negligence or otherwise). Lexus Australia, a division of Toyota Motor Corporation Australia Limited ABN 64 009 686 097 155 Bertie St, Port Melbourne 3207.

*Full DriveCare details and conditions are available at lexus.com.au/services/benefits or you can phone 1800 253 987. Lexus Australia reserves the right to change, without notice, any benefits specified. Benefits should be confirmed at the time of ordering with your authorised Lexus dealer. To the extent permitted by law, Lexus Australia will not be liable for any damage, loss or expense incurred in relation to the benefits specified above (whether by way of negligence or otherwise). Lexus Australia, a division of Toyota Motor Corporation Australia Limited ABN 64 009 686 097, 155 Bertie St, Port Melbourne Vic 3207.

MAIN FEATURES <NX 300h/NX 300>

		LUXURY	F SPORT	SPORTS LUXURY (AWD ONLY)	
EXTERIOR	Privacy Glass	•	•	•	
	Roof Rails	•	•	•	
	Moonroof	EP	EP1/EP2	•	
	Heated door mirrors; LED side turn signal lamp, power folding, interlink with reverse gear	•	•	•	
	Door handles; foot area illumination	•	•	•	
	Dual Exhaust Pipes	•	•	•	
	Exclusive front and rear bumpers, front mesh grille, door mirrors, front fender emblems, suspension and 18" alloy wheel (F SPORT package)		•		
	18" Alloy Wheels	•		•	
	Temporary Spare Wheel	•	•	•	
INTERIOR	Leather Accented Shift Knob and Steering Wheel with Paddle Shifts	•		•	
	F Sport Shift Knob and Steering Wheel with Paddle Shifts		•		
	4.2-inch Colour TFT (Thin Film Transistor) Multi-Information Display	•	•	•	
	Colour head-up display		EP2	•	
	Analogue Clock with GPS Correction Function	•	•	•	
	Centre console box	•	•	•	
	Vanity Mirrors and Lamps (Front seats)	•	•	•	
	Cupholders (Front and outboard rear seats)	•	•	•	
	Door pockets (Front and rear doors)	•	•	•	
	Dual Zone Climate Control Air Conditioning	•	•	•	
	Tonneau board	•	•	•	
	Exclusive front seats, trim, steering wheel, shift lever, meters, aluminium pedals and scuff plates (F Sport Package)		•		
	OPERATION	Power tilt and telescopic steering column; auto-away/auto-return function	•	•	•
		Wireless Phone Charger ¹		•	•
Steering Wheel Control Switches		•	•	•	
Electric Park Brake		•	•	•	
Multi-mode Automatic Transmission (NX 300 only)		•	•	•	
Hybrid Sequential Shift Matic (NX 300h only)		•	•	•	
Drive Mode Select - ECO / NORMAL / SPORT		•			
Drive Mode Select - ECO / NORMAL / SPORT / SPORT + / CUSTOM			•	•	
3-Position Memory Switches (Driver's seat)			•	•	
All Speed Active Cruise Control		•	•	•	
Smart Entry and Start System		•	•	•	
Smart Key Card			EP2	•	
Panoramic View Monitor			•	•	
Parking and Clearance Sonar (8 head)		•	•	•	
Power Back Door		•	•	•	
NAVIGATION AND AUDIO		Satellite Navigation System with SUNA Live Traffic Alerts ⁴	•	•	•
		10.3-inch EMV (Electro Multi-Vision) Display with Lexus Remote Touch Interface	•	•	•
	10-Speaker Lexus Premium Sound System; AM/FM radio, in-dash DVD player, MP3 and WMA ³ (Windows Media Audio) play compatible ³ , DSP (Digital Signal Processor ⁵), ASL (Automatic Sound Leveliser)	•	•		
	Mark Levinson® Premium Surround Sound System; AM/FM radio, in-dash DVD player, 14 speakers, MP3 and WMA play compatible ³ , DSP, ASL, Clari-Fi		EP2	•	
	Bluetooth® ²	•	•	•	
2 USB ports/mini-jack ³	•	•	•		

LUXURY F SPORT SPORTS LUXURY (AWD ONLY)

		LUXURY	F SPORT	SPORTS LUXURY (AWD ONLY)
SEATS	8-way power front seats	•	•	•
	Driver Seat Lumbar Power Adjustment Support		•	•
	Heated Front Seats	•		
	Heated and Ventilated Front Seats		•	•
	Power Folding Rear Seats			•
	Heated Outer Rear Seats			•
	NuLux Seat Trim	•		
	F Sport Leather Accented Seat Trim		•	
	Leather-Accented Seat Trim			•
SAFETY	Lexus Safety System+, including Pre-Collision System, LDA (Lane Departure Alert) with Steering Control, AHB (Automatic High Beam) System, Dynamic Radar Cruise Controls	•	•	•
	Blind Spot Monitor System with Rear Cross Traffic Alert ⁴	•	•	•
	Traction Control System (TCS)	•	•	•
	Steering-assist Vehicle Stability Control (S-VSC)	•	•	•
	Anti-lock Brake System (ABS) with Electronic Brake force Distribution (EBD)	•	•	•
	Brake Assist system ⁴	•	•	•
	Hill-start Assist Control	•	•	•
	3-eye Bi-Beam LED headlamps; auto-levelling system		•	•
	Bi-Beam LED headlamps; auto-levelling system	•		
	LED sequential turn signal lamps		•	•
	Headlamp cleaners	•	•	•
	Adaptive High-Beam System (AHS)		•	•
	LED Daytime Running Lamp (DRL)	•	•	•
	Automatic anti-glare mirrors (Interior and door mirrors)	•	•	•
	8 SRS Airbags	•	•	•
	Whiplash Injury Lessening Front Seats	•	•	•
	3-Point ELR Seatbelts (All seats)	•	•	•
	Pretensioners and force limiters (Front seats)	•	•	•
	Anchor bars for fixing ISOFIX-compliant child seat (Outboard rear seats)	•	•	•
CRS (Child Restraint System) top tether anchors (Outboard rear seats)	•	•	•	
Security system; alarm, immobiliser system	•	•	•	
Tyre Pressure Warning System	•	•	•	

¹Only Qi-supported devices are compatible. Refer to your device manufacturer to determine your device's compatibility. Some devices may require the purchase of a Qi-supported accessory to enable wireless charging.

²The Bluetooth® word mark is owned by Bluetooth SIG, Inc. Not all devices will be compatible and functionality varies depending on the device.

³Not all devices will be compatible. Functionality varies depending on device.

⁴Current navigation mapping database encompasses major capital and primary national road networks and offers some coverage in regional areas. Suna™ GPS Traffic Updates are only available in metropolitan Adelaide, Brisbane, Canberra, Gold Coast, Melbourne, Perth and Sydney; it operates from information provided by Intellematics Australia and may not cover all road incidents and congestion. See sunatrafic.com.au for details.

⁵Digital radio station coverage dependent on vehicle location.

SPECIFICATIONS

		NX 300h	NX 300
DIMENSIONS AND WEIGHT	Overall length	4640mm	4640mm
	Overall width	1845mm (without mirror)	1845mm (without mirror)
	Overall height	1645mm	1645mm
	Wheelbase	2660mm	2660mm
	Tread	1570-1580mm (Front)/1570-1580mm (Rear)	1570-1580mm (Front)/1570-1580mm (Rear)
	Curb weight*1	1740-1835kg <NX 300h 2WD> 1800-1895kg <NX 300h 4WD>	1700-1790kg <NX 300 2WD> 1755-1860kg <NX 300 4WD>
	Gross vehicle weight*1	2325kg <NX 300h 2WD> 2385kg <NX 300h 4WD>	2280kg <NX 300 2WD> 2350kg <NX 300 4WD>
	Suspension	MacPherson strut type (Front)/Double wishbone type (Rear), coil springs, gas-filled shock absorbers, stabilizer bar	MacPherson strut type (Front)/Double wishbone type (Rear), coil springs, gas-filled shock absorbers, stabilizer bar
	Steering system	Rack and pinion. EPS (Electric Power Steering)	Rack and pinion. EPS (Electric Power Steering)
	Brakes	(Front) 328mm ventilated discs (Rear) 281mm discs	(Front) 328mm ventilated discs (Rear) 281mm discs
	Minimum turning radius (Tyres)	5.7m	5.7 m
	Fuel tank capacity	56 litres	60 litres
	Tyres	225/60R18, 235/55R18	225/60R18, 235/55R18
ENGINE	Type	2.5-liter, 4-cyl. in-line Twin Cam 16-valve (2AR-FXE, unleaded)	2.0-liter, 4-cyl. in-line Twin Cam 16-valve, turbocharger (8AR-FTS, unleaded)
	Piston Displacement	2494cc	1998cc
	Max. output	114kW/5700rpm	175kW/4800-5600rpm
	Max. torque	210Nm/4200-4400rpm	350Nm/1650-4000rpm
	Fuel System	Electronic Fuel Injection	Electronic Fuel Injection
MOTOR	Type	Permanent magnet motor (2JM) (Front) Permanent magnet motor (2FM) (Rear) (2WD only)	
	Max. output	105kW (Front) 50kW (Rear-AWD only)	
	Max. torque	270Nm (Front) 139Nm (Rear-AWD only)	
BATTERY	Total system output	147kW*2	
	Type	Sealed Ni-MH (Nickel-Metal Hydride)	
	Modules	34	
	Connection method	Series	
	Capacity	6.5Ah	



*1Vehicle weights / mass and dimensions are approximate and subject to individual vehicle variances. Vehicles should be individually weighed and measured before fitting any accessories, towing or designing any compatible trailer / caravan or otherwise using the vehicle in any way that depends on this value.
*2Total system output from the engine and electric motors (using the battery), based on in-house measurements.

- Addition of extra features may change figures in this chart.
- Lexus Australia reserves the right to alter any details of specifications and equipment without notice.
- Details of specifications and equipment are also subject to change to suit local conditions and requirements.
- Please enquire at your local dealer for details of any such changes that might be required for your area.
- Please inquire at your local dealer for details on the availability of features.
- Vehicle body color might differ slightly from the printed photos in this catalogue.

