



UX

UX200 / UX250h

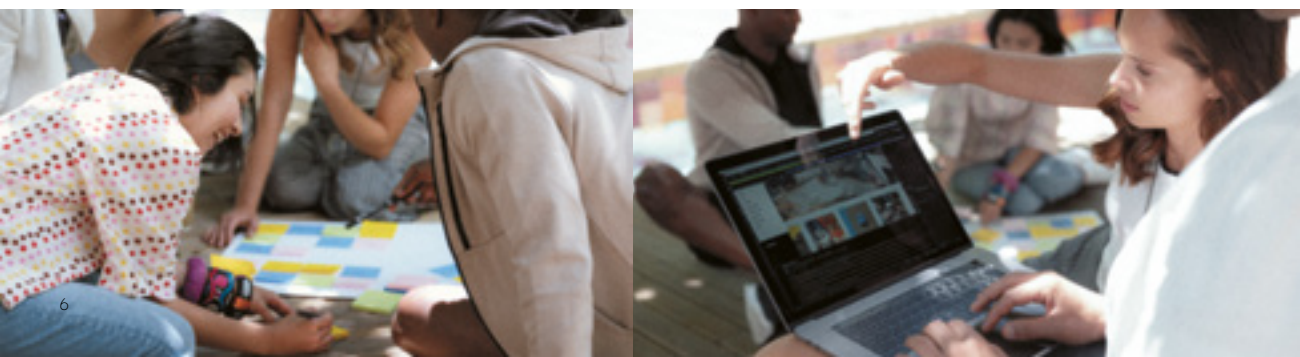


Overseas model shown.

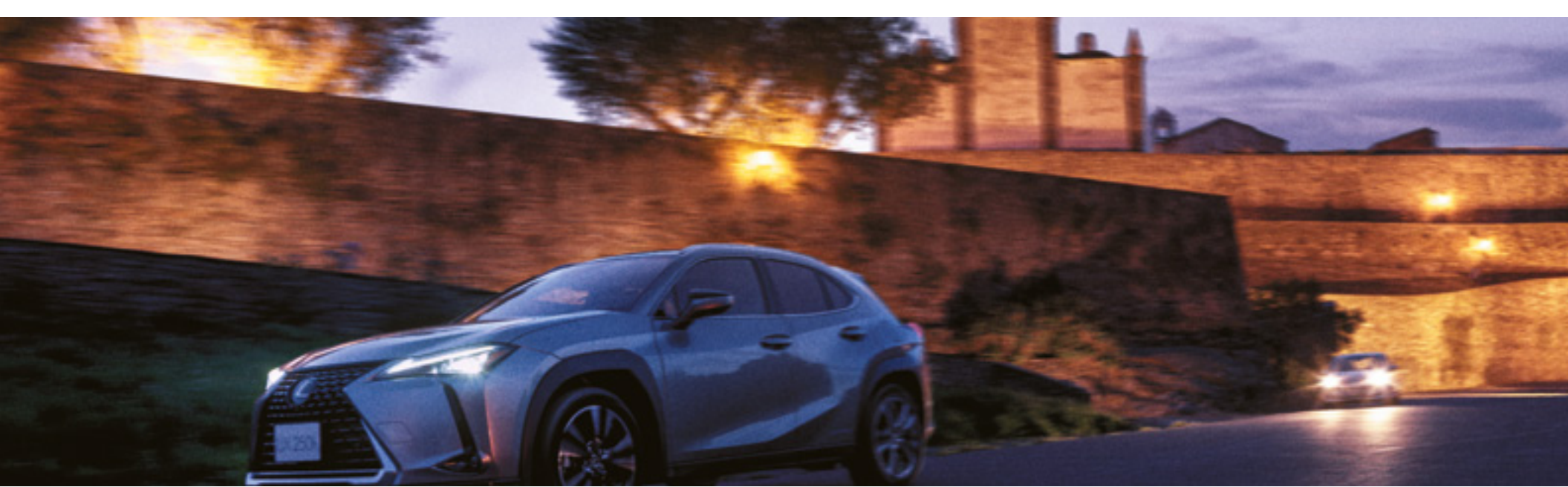


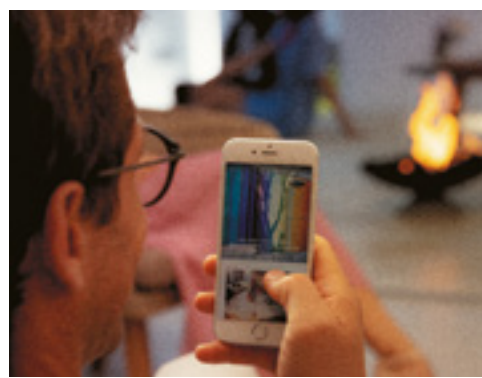
<i>UX</i>	» P4
<i>EPISODE 6</i>	» P15
<i>TAKUMI</i>	» P53
<i>COLOURS & TRIMS</i>	» P54
<i>LEXUS OWNERSHIP SOLUTIONS</i>	» P69
<i>BENEFITS OF ENCORE</i>	» P71
<i>SPECIFICATIONS</i>	» P72









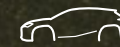


LEXUS

EPISODE
SIX

1

CONCEPT



P16

2

DESIGN



P22

3

PERFORMANCE



P27

4

FEATURES



P34

5

SAFETY



P42

6

F SPORT



P47

CONCEPT



The UX was designed for the urban explorer. Bold and versatile, with the agility of a hatchback and strength of an SUV, it elevates your connection to your every day drive. Elegantly sculpted, with a cockpit tailored to your needs - meet the all-new Lexus UX.



» EPISODE





"Our aim with the UX was to break with the conventions of a crossover and create something more distinctive and dynamic. It was about feeling truly connected to the vehicle, the road, and your senses."

UX Chief Engineer, Chika Kako

The all-new Lexus UX challenges everything that went before. Fusing functionality with sophistication, its bold exterior lends it a unique presence on the road. Inside, you'll enjoy the class-leading visibility of a modern crossover in a cabin tailored to meet your needs. Its rigid new Lexus GA-C platform and low centre of gravity give you the reassuring stability of an SUV, impressively combined with the nimble manoeuvrability of a hatchback.

Behind the wheel, the thrill of the drive is amplified by exceptional fuel economy¹, refined suspension and innovative aerodynamics.

The UX offers a choice of two state-of-the-art powertrains, including a fourth-generation self-charging hybrid in the UX 250h that combines fuel efficiency¹ with smooth all-wheel drive performance, and an efficient¹ new petrol engine in the UX 200. Both are available as dynamic F Sport models.

Every Lexus comes with a wealth of imaginative technology, and the UX is no exception. The Panoramic View Monitor² combines images from four video cameras to give you a 360° birds-eye view of the car and its surroundings, and the Lexus Safety System+³ helps support safe driving practices.



¹Actual fuel consumption may vary depending on driving conditions/style, vehicle condition and options/accessories fitted.

²Not available on Luxury grade, F Sport & F Sport + EPI. Driver assist feature/s only, designed to operate when certain technical conditions are met and is not a substitute for safe driving practices. Driver remains responsible at all times for safe driving.

³Lexus Safety System+ is a driver assist safety package only, designed to operate when certain technical conditions are met, and its features are not a substitute for safe driving practices. Driver remains responsible at all times for safe driving.

Overseas model shown. Australian specifications may vary.

DESIGN



Powerful bodywork contrasts with a sleek, elegant profile in the new Lexus UX. Expect seamless continuity between its exterior and interior, with thoughtful touches of Japanese refinement. Inside, spacious comfort and class-leading visibility give you a driving experience to remember.



» EPISODE



EXTERIOR

Both striking and elegant, the dynamic exterior of the UX flows from a reimagined, three-dimensional signature Lexus spindle grille. Its fluid silhouette is anchored by seamless continuity between its L-shaped headlights, front and rear wings and an eye-catching rear light formed by a sequence of 120 3mm-thick LEDs that tapers gently toward the middle.



INTERIOR

Inspired by a traditional Japanese design concept that blurs the boundary between the inside and outside of a house, the meticulously crafted UX harmoniously blends its exterior with a spacious, driver-focused cabin. Within, the UX offers class-leading visibility and surprising spaciousness.





PERFORMANCE



The Lexus UX comes with two powertrains that give you a thrilling driving experience alongside convenient fuel economy.¹ In the UX 200, a 2.0 litre engine gives you great fuel economy¹ and performance. Powered by the latest Lexus Self-Charging Hybrid Electric Technology, the UX 250h features a new 2.0 litre four-cylinder petrol engine, electric motor and hybrid transmission for a quiet drive that doesn't compromise on performance.



»»» EPISODE



¹Actual fuel consumption may vary depending on driving conditions/style, vehicle condition and options/accessories fitted. Overseas model shown. Australian specifications may vary.



GA-C (Global Architecture-C) platform

The advanced Lexus GA-C platform forms the backbone of the UX and provides the foundation for the core elements of its dynamic performance: accelerating, cornering and braking. Combining excellent rigidity and a low centre of gravity, it gives the UX exceptional stability and the sharp response and manoeuvrability of a passenger car for a dynamic drive, excellent ride comfort and peace of mind.



Aerodynamics

The UX combines bold design with advanced aerodynamic performance. It drove developments in aerodynamics, seen in its innovative aero stabilising arch mouldings and aero stabilising blade lights with integrated rear combination lamps. Blending form with function, the front and rear fenders feature aero stabilising arch mouldings with a distinctive rounded front section, squared rear section and flat upper surface that help to suppress unstable vehicle behaviour, enhancing roll stability while cornering. The eye-catching aero stabilising blade lights feature vertical fins on the outer edges which smooth airflow over the back surface, contributing to excellent rear stability while cornering, and enhancing stability in high speed driving in side winds. The aero ventilating wheels provide the UX with a high level of both aerodynamic and brake cooling performance. In addition, aerodynamic enhancements to its upper body include the shape of the front pillar and a wing type rear spoiler, and to the flat underbody structure that accelerates air flow under the vehicle.



Multi-material body

To create a light, strong body, hot-stamp and high-tensile steel were used in key body components including the underbody, together with aluminium for the hood and side doors and resin for the back door. Reinforcements around the outer side and back doors that connect the squared reinforced annular structures, and the extensive use of technologies including laser screw welding and structural body adhesive further enhance rigidity, contributing to agile handling and excellent steering response and feedback.





2.0 litre 4-cylinder engine (M20A-FKS)

The advanced 2.0 litre inline 4-cylinder engine generates powerful performance with exceptional fuel efficiency¹ and environmental friendliness. The engine's design was refined to boost thermal efficiency and power output, while reducing both weight and size. It utilises high-speed combustion technology featuring a long stroke, high-efficiency intake and exhaust ports, and multi-hole direct injectors. Additional refinements, including a continuously variable-capacity oil pump, variable cooling system, and VVT-iE on the intake-side valves, contribute to its exceptional performance and fuel efficiency¹.

Direct Shift-CVT

The Direct Shift-CVT delivers the smooth and fuel-efficient¹ driving of a conventional CVT, with a direct and strong launch acceleration feel using an additional launch gear. A wide gear ratio range and feeling of linear acceleration contribute to driving pleasure, achieved by synchronising engine speed and vehicle speed with the driver's operation. In conjunction with drive mode control, it realises responsive performance to suit various driving styles, from smooth driving with excellent fuel economy¹ to sporty driving with fast shifting.



Self-Charging Hybrid Electric

The Hybrid System was developed to deliver outstanding fuel economy¹ together with linear acceleration for an exhilarating and efficient drive that doesn't compromise on performance. The combination of a highly-responsive engine, efficient hybrid control system and enhanced battery performance gives the UX 250h its high-speed responsiveness and smooth, natural acceleration, so it moves in tune with the driver's expectations.

Key to the Hybrid System's development was a focus on creating compact lightweight components to fulfil the promise of economical yet exhilarating driving. The brain of the Lexus Hybrid Drive, the power control unit, optimises control of DC electricity from the battery and AC electricity for driving the motor and generator. The Ni-MH battery optimises the battery layout and adopts a compact cooling system to enable more luggage space, as well as contribute to the low centre of gravity.

2.0 litre 4-cylinder engine (M20A-FXS)

The advanced 2.0 litre inline 4-cylinder engine utilises high-speed combustion technology to deliver powerful performance together with exceptional fuel efficiency¹. The amount of motor assist and engine rpm were optimised to deliver the feeling of linear acceleration. The engine speed is synchronised with increasing vehicle speed to deliver the feeling of immediate and continuous acceleration.

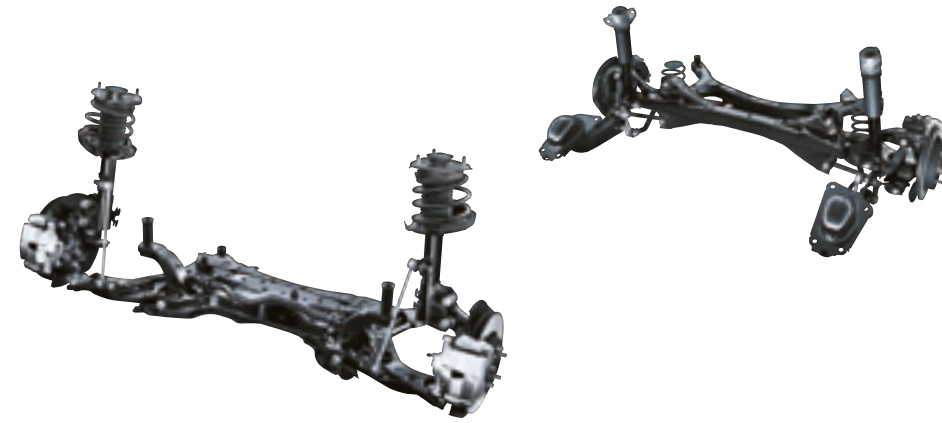


¹Actual fuel consumption may vary depending on driving conditions/style, vehicle condition and options/accessories fitted. Overseas model shown. Australian specifications may vary.



EPS (Electric Power Steering)

Featuring a compact and highly rigid format, the column assist-type EPS delivers the sharp response expected of a Lexus. Adopting a large column shaft enhanced torsional rigidity, boosting both steering response and easy operation. This, in turn, contributes to responsive handling that instantly and crisply responds to driver inputs with a smooth and sure steering feel.



Suspension

The MacPherson strut front suspension and trailing wishbone rear suspension deliver excellent steering response and premium ride comfort. They were fine-tuned specifically for the UX, and driven hard in testing on a race circuit to deliver reliable response and handling even at the car's limits. Careful attention paid to the shock absorbers, including refining the damper oil, oil seals and FCD (Friction Control Device), also enhance the car's ability to absorb vibrations transmitted from the road surface to provide a flat and comfortable ride.

Drive mode select

Drive mode select provides integrated control of multiple systems, including the engine and CVT, to let you tune performance to suit your driving style. You can select and change between three modes: Eco for fuel efficient driving; Normal for balanced driving performance with fuel efficiency¹; and Sport for sporty driving with a thrilling acceleration response.



Brakes

Engineered for excellent braking force, control and response, the brakes provide intuitive response to the driver's input, adding to driving pleasure by combining the feeling of thrilling performance with stable and sure handling.



¹Actual fuel consumption may vary depending on driving conditions/style, vehicle condition and options/accessories fitted. Overseas model shown. Australian specifications may vary.

FEATURES



Slide into the driver's seat of the new UX, and you will find a cockpit designed around you. Responsive, intuitive handling is heightened by an ergonomic dashboard where tools are within easy reach; thoughtful inclusions and advanced assistive technology contribute to a seamless and enjoyable drive.



» EPISODE





The new Lexus UX blends imaginative technology with bold design, functionality and premium comfort. The distinctive arrowhead illumination of the lamps, race-car inspired fins and a power boot¹ for when your hands are full combine with convenient,

smartphone-inspired features and a colour head-up display² calibrated for clarity even in bright light to give you a car that revolutionises the joy of the drive. Welcoming, thoughtful, future-focused, effortlessly refined - this is the Lexus UX.



3-eye Bi-Beam LED headlamps¹

The ultra-compact 3-eye Bi-Beam LED headlamps combine striking design with exceptional light distribution. The Lexus signature L-shaped DRL (Daytime Running Lamps) set above the headlamps feature distinctive vertical illumination lines that enhance the feeling of depth.

LED rear combination lamps

The bold design of the rear combination lamps reinforces the unique identity of the Lexus UX. The left and right lamps are connected by the aero stabilising blade lights to form a single line of light across the rear, illuminated by 120 LEDs. This form is complemented by the advanced aerodynamics of the L-shaped race car-inspired fins, which contribute to excellent rear stability while cornering and in side winds.



Forward visibility

A key focus of the human-centred design of the UX was forward visibility, with the aim of providing a commanding view. Special attention was given to the design of the front pillars and door mirror area, creating a space between the pillar and mirror to enhance the visibility of pedestrians and bicycles at intersections.

Moonroof³

The placement of the moonroof lets in an abundance of light, enhancing the open and airy feeling in the cabin. Its structure and shape were refined to help reduce wind noise when open.



Power Boot¹

Even if both hands are full, when carrying the Electronic Key you can open and close the boot automatically by moving your foot under the rear bumper and out again.

Rear bumper

Combining high rigidity with excellent recyclability, the rear bumper accentuates the dynamic SUV presence of the rear design, endowing it with a strong sense of stability. Back-up lamps are integrated into the lower section.



¹Not available on Luxury.
²Available as an optional extra on F Sport & Sports Luxury
³Available as an optional extra on all grades.
 Overseas model shown. Australian specifications may vary.



Meters/EMV display

Based on the 'Seat in Control' concept of the human-centred interior, the displays are designed to provide the driver with an intuitive interface that provides clear information without changing posture or line of sight. The 10.3-inch EMV (Electro Multi-Vision) displays incoming hands-free mobile calls, audio system and other information, and coordinates the display of select information with the multi-information display integrated into the colour TFT (Thin Film Transistor) Optitron meter, and the large colour head-up display positioned in the driver's line of sight. The drive mode select switch is conveniently located on the meter hood bezel.

Colour head-up display¹

The wide colour head-up display projects a range of frequently checked information on the lower windshield glass in the driver's line of sight, including the current speed, tachometer, audio system, and more.



Remote Touch Interface

The interface is designed for smartphone-style operation. The cursor can be adjusted to stop following flick operation to suit the user's preferences. Pinch-in and pinch-out operation enables continuous in and out zooming.

Audio switches

Blending sophisticated design with ease of use, remote switches to control the audio system are integrated into the base of the palm rest. The layout and number of switches are arranged for intuitive control of frequently-used functions by the hand resting on the palm rest, without changing posture or line of sight.



Air-conditioning vent knob

An imaginative approach to technology drove the development of a single easy-to-use air-conditioning vent knob that controls both air direction and volume. Available on Sports Luxury, the integration of wireless LED lighting into the knob makes it easy to use at night, reflecting the progressive sophistication of the Lexus UX.



Wireless charger²

This thoughtful charging tray in the centre console enables wireless battery charging in Qi-compatible smartphones and electronic devices simply by placing them on the charger tray.

¹Available on F Sport + EP2 & Sports Luxury + EP.

²Only Qi-supported devices are compatible. Refer to your device manufacturer to determine your device's compatibility. Some devices may require the purchase of a Qi-supported accessory to enable wireless charging. Not available on Luxury grade.

Overseas model shown. Australian specifications may vary.



Console box

The lid on the large-capacity console box opens to both the left and right for easy access by the driver and front seat passenger. The length of the armrest was optimised to provide comfort and support, with controls for the frequently-used audio system functions thoughtfully integrated into the front palm rest.



USB ports/AUX/power outlet¹

Two USB ports and an AUX integrated inside the centre console box support the plug-and-play use of music players, and enable the connection and charging of various devices and portable gear. Additional power outlets are located in the front tray and side of the luggage space, alongside two USB ports in the rear of the centre console.



Mark Levinson^{®2} Premium Surround Sound System

Developed specifically for the UX to deliver audio purity, power and precision, the 13-speaker system includes 5 Unity speakers with identical performance arranged along the shoulder line. The ample power of the 8-channel amplifier delivers pure, clean audio signals to the speakers. QLS (Quantum Logic Surround) and Clari-Fi optimise acoustic tuning in the cabin to faithfully reproduce original sound sources.



Lexus Climate Concierge

The Lexus Climate Concierge manifests the human-centred approach to personalised comfort. It automatically controls the cabin temperature, including individual temperature controls and the Ventilated Seats³ for the front seats, to optimise occupant comfort. It also provides one-touch control of all heating systems in the cabin.

Rear armrest

A thoughtful strap makes it easy to fold out the armrest in the centre of the rear seats to provide added comfort and support, and use the two convenient cupholders integrated in the front.



Luggage space

The ample luggage space in the UX highlights the practical convenience of the vehicle's packaging and thoughtful design. For longer items and larger loads, the 60/40 split rear seatbacks fold down to create versatile passenger and luggage configurations.

¹Not all devices will be compatible. Functionality varies depending on device.

²Mark Levinson[®] is a registered trademark of Harman International Industries, Incorporated. Available on F Sport + EP2 and Sports Luxury.

³Available on F Sport & Sports Luxury.

Overseas model shown. Australian specifications may vary.

SAFETY



The thrilling performance you experience in the UX is underpinned by a host of active and passive safety measures that utilise advanced technologies to help support safe driving practices.

5

» EPISODE



LEXUS SAFETY SYSTEM +



LTA (Lane Trace Assist)¹

When Lane Tracing Assist is activated, it alerts the driver of possible lane or road deviations and helps assist steering to avoid them. In addition, while driving on highways and automobile-only roads with Dynamic Radar Cruise Control (with full speed range) activated, it helps assist steering to keep the vehicle in the lane.



Radar Active Cruise Control¹

In addition to maintaining a constant speed, Radar Active Cruise Control uses the radar and camera sensors to detect a vehicle driving ahead and maintain an appropriate distance between vehicles².



Pre-Collision Safety System (PCS) with Pedestrian (and Cyclist) Detection²

When the millimetre-wave radar and monocular camera sensors detect a vehicle ahead, a pedestrian during the day or night or a cyclist during the day and determine that a collision is likely, it alerts the driver and activates pre-collision brake assist when the driver depresses the brake pedal. If the driver cannot depress the brake pedal, it activates the pre-collision brakes to help avoid a collision or mitigate the impact force.



AHS (Adaptive High-Beam System)⁴

The system detects the headlamps of oncoming vehicles, tail lamps of preceding vehicles, and brightness of the surrounding area. When it detects a vehicle within the area illuminated by the high beams, it disables / enables 24 LEDs on each side to minutely adjust lit and unlit areas, optimising light distribution. By partially blocking light from the high-beam headlamps so they don't directly project onto a preceding or oncoming vehicle, the system helps contribute to safe driving at night².



PKSA (Parking Support Alert)¹

PKSA detects stationary objects such as walls in the direction of travel, as well as vehicles and pedestrians approaching from behind while reversing² and alerts the driver on the display and with a buzzer in the event that a collision is determined to be likely.



Blind Spot Monitor System¹

When the quasi-millimetre-wave radars in the rear bumper detect vehicles in adjacent lanes that aren't visible in the door mirrors, the system activates an LED warning indicator in the relevant door mirror the moment a vehicle enters this blind spot.



Panoramic View Monitor³

To help check areas surrounding the vehicle that are difficult to see from the driver's seat, the system shows a bird's-eye view of the vehicle in real time on the 10.3-inch EMV display, using a composite image taken by cameras mounted on the front, sides, and rear of the vehicle.³

SRS (Supplemental Restraint System) airbags

The UX features dual-stage SRS airbags (Front seats), SRS knee airbags (Front seats), SRS side airbags (Front seats) and SRS curtain shield airbags (Front and rear seats).



¹This is a driver assist feature only, designed to operate when certain technical conditions are met, and is not a substitute for safe driving practices. Driver remains responsible at all times for safe driving.

²Pre-Collision Safety System/PCS with Pedestrian and Cyclist Detection is a driver-assist feature only and not a substitute for safe driving practices. Driver remains responsible at all times for safe driving. Pedestrians and cyclists may not be detected in certain conditions. Pedestrians may not be detected including in low and harsh light, where partially obstructed from view, where clothing or movement obscures or effects body contours, persons under 1 metre or over 2 metres tall and where carrying or pushing large objects.

³Not available on Luxury, F Sport & F Sport + EPI models.

⁴Not available on Luxury models.

Overseas model shown. Australian specifications may vary.



F SPORT



The UX F Sport grade evolves the heritage of the Lexus F marque and Lexus sport DNA that finds its ultimate expression in the LFA supercar. The integration of exclusive F SPORT refinements and sports tuning gives you a strong sense of oneness with the car, heightening the thrill, immediacy and exhilaration of true sports driving.



EPISODE

UX 200

Differentiated from the other grades by its unique F-inspired design elements, including an F-mesh grille, rear bumper with chrome highlights, sports seats and 18-inch alloy wheels, the UX F Sport grade

builds on the range's already powerful presence. Other highlights include an eight-inch TFT colour display, adding to the thrill of a sports-inspired drive that doesn't compromise on Lexus comfort and refinement.



A_Front mesh grille / B_Front bumper / C_Aluminium wheels / D_Front fender emblems



E_Jet black plating / F_Rear bumper

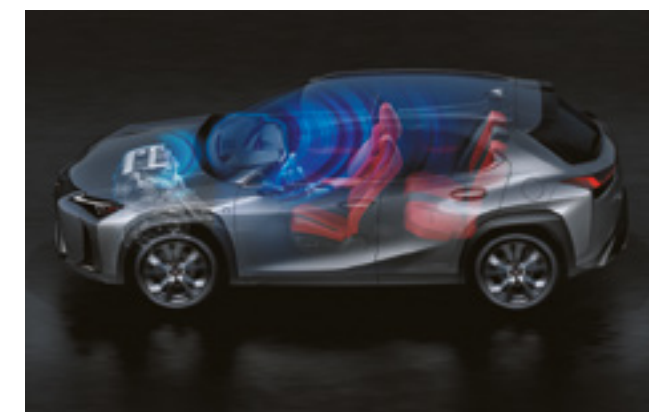
Performance dampers

The rear performance dampers quickly absorb body flex and vibrations from the road while driving to heighten handling stability and smooth ride comfort. Together with the front performance rod, they enhance straight line driving stability for accurate, stable handling and outstanding comfort in normal driving, and dynamic performance and stability in high-speed driving.



AVS (Adaptive Variable Suspension system)

AVS optimally controls the damping force of the shock absorbers on all four wheels in response to driver input and road surface conditions, contributing to excellent ride comfort and handling.



ASC (Active Sound Control)

ASC enhances the engine sound, recreating upshifting and downshifting sensations that evoke a geared automatic transmission to provide audible feedback of the vehicle's response to driver operation. This enhances the feeling of unity between driver and car, and ramps up the exhilaration of F SPORT performance.



A_Meters & multi-information display / B_Steering wheel / C_Aluminium pedals / D_Shift lever knob / E_Clock

F SPORT front seats

The exclusive sports seats evoke the striking and refined design of the flagship LC's sports seats. An 'integrated foaming' structure contributes to excellent fit and holding performance. Optimised for the F SPORT, these seats combine outstanding comfort with excellent support for the body during sports driving.



F SPORT meter

Evolved from the LFA supercar, the advanced interface of the F SPORT's sliding meter ring uses motion graphics that combine beautiful design with excellent visibility to display a range of functions that instantly communicate important information by priority.

F SPORT multi-information display

The meter ring on the large TFT (Thin Film Transistor) colour multi-information display slides to the side at a touch of a switch on the steering wheel.



Drive mode select

Conveniently located on the meter bezel, the drive mode select switch lets the driver select the performance mode to suit their mood and driving style, with the choice of Eco, Normal, and Sport S/S+ Modes. In addition, Custom Mode enables customisation of settings for the powertrain, AVS, EPS and air-conditioning.



LEXUS
TAKUMI

*The Lexus commitment to perfection
finds its finest expression in the master
craftsmanship of the Takumi.*



Every Lexus is based on an uncompromising approach to creating premium automobiles. Inspired by our 'Yet' philosophy, we seek innovation in every facet of engineering through a sophisticated fusion of seemingly incompatible ideas such as 'high performance yet high fuel efficiency'. In addition, unique Lexus styling is born of our L-finesse design language, a fine balance of 'leading-edge' and 'finesse', so that every Lexus is not only captivating and luxurious, but also highly refined.

Finally, every individual Lexus model is also measured against a set of internal standards covering design, performance, specifications and equipment, to confirm it is distinctive and worthy of the Lexus emblem.

This pursuit of perfection is evident at every stage of the manufacturing process.

Every Lexus vehicle is created with a masterful skill and attention to detail inspired by both traditional artisanship and state-of-the-art engineering. For example, at the Tahara plant in Japan, precision components made using leading-edge digital technology are assembled and finished by master craftsmen called Takumi, whose technical expertise and sure senses are honed by decades of rigorous experience.

EXTERIOR & INTERIOR COLOURS

The concept behind the captivating colours for the UX is 'Toughness yet Luxury,' expressing the assertiveness of a crossover and the refinement of Lexus-style textures. A fresh and contemporary palette of exterior and interior colours is complemented by the premium quality of the upholstery and trim.



White Nova <083>^{1^}



Sonic Quartz <085>^{2^}



Deep Metallic Bronze <4X2>^{2^}



Carnelian <4Y1>^{1^}



Mercury Grey <1H9>[^]



Premium Silver <1J4>[^]



Khaki Metal <6X4>[^]



Cobalt Mica <8X1>^{1^}



Titanium <1J7>[^]



Onyx <2I2>



Celestial Blue <8Y6>^{2^}



Graphite Black <223>[^]



Caliente <3T2>

¹Available on F Sport only.

²Not available on F Sport.

Lexus reserves the right to vary and discontinue the current interior and exterior colours, trims and colour/trim/model combinations. Colours and trims displayed here are a guide only and may vary from actual colours due to printing/display process. See your Lexus dealer to confirm colour/trim/model availability when ordering your vehicle.

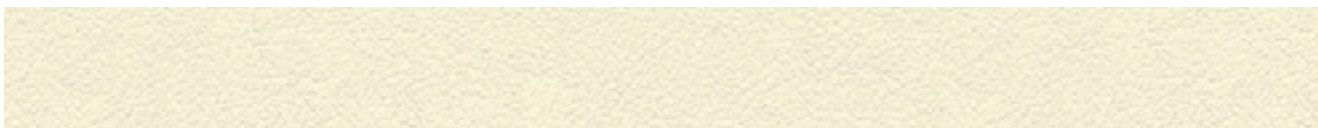
[^]Metallic/Mica Pearlescent paint is optional and subject to additional charges.

Overseas model shown. Australian specifications may vary.

INTERIOR TRIMS

The precise craftsmanship of the upholstery is elevated by the use of sashiko, a traditional Japanese quilting technique - anchoring the interior of the UX in a legacy of timeless Japanese refinement.

NULUXE (LUXURY)



Interior Trim: Rich Cream

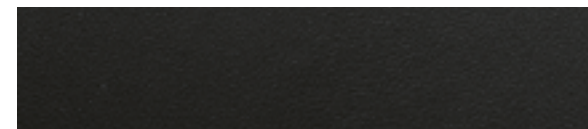


Ornamentation Option: Brown

NULUXE (LUXURY)



Interior Trim: White Ash

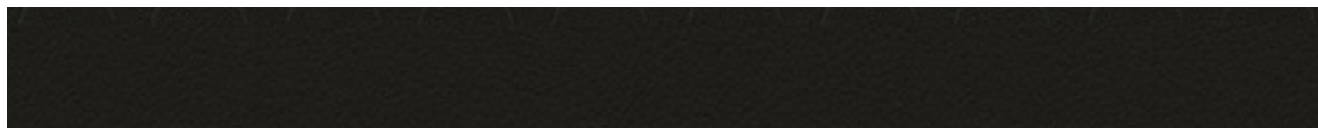


Ornamentation Option: Black

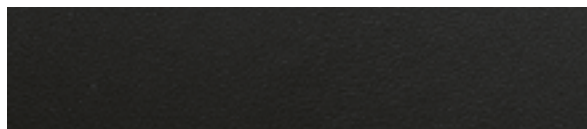
Lexus reserves the right to vary and discontinue the current interior and exterior colours, trims and colour/trim/model combinations. Colours and trims displayed here are a guide only and may vary from actual colours due to printing/display process. See your Lexus dealer to confirm colour/trim/model availability when ordering your vehicle.

Overseas model shown. Australian specifications may vary.

NULUXE (LUXURY)



Interior Trim: Black

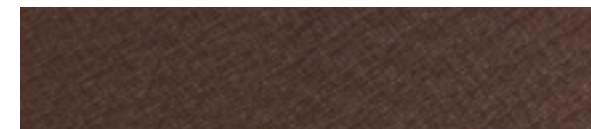


Ornamentation Option: Black

SMOOTH LEATHER-ACCENTED (SPORTS LUXURY)



Interior Trim: Rich Cream



Ornamentation Option: Washi (Japanese paper grain)/Brown

Lexus reserves the right to vary and discontinue the current interior and exterior colours, trims and colour/trim/model combinations. Colours and trims displayed here are a guide only and may vary from actual colours due to printing/display process. See your Lexus dealer to confirm colour/trim/model availability when ordering your vehicle.
Overseas model shown. Australian specifications may vary.

SMOOTH LEATHER-ACCENTED (SPORTS LUXURY)



Interior Trim: White Ash

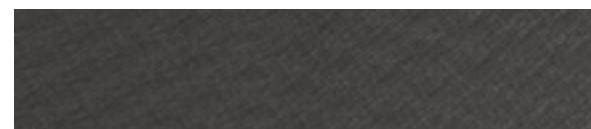


Ornamentation Option: Washi (Japanese paper grain)/Black

SMOOTH LEATHER-ACCENTED (SPORTS LUXURY)



Interior Trim: Black

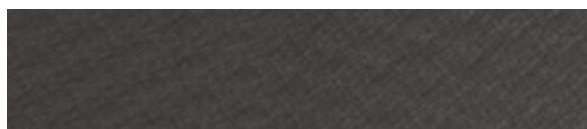


Ornamentation Option: Washi (Japanese paper grain)/Black

SMOOTH LEATHER-ACCENTED (SPORTS LUXURY)



Interior Trim: Ochre



Ornamentation Option: Washi (Japanese paper grain)/Black

SMOOTH LEATHER-ACCENTED (SPORTS LUXURY)



Interior Trim: Zephyr Blue



Ornamentation Option: Washi (Japanese paper grain)/Cobalt

Lexus reserves the right to vary and discontinue the current interior and exterior colours, trims and colour/trim/model combinations. Colours and trims displayed here are a guide only and may vary from actual colours due to printing/display process. See your Lexus dealer to confirm colour/trim/model availability when ordering your vehicle.
Overseas model shown. Australian specifications may vary.

SMOOTH LEATHER-ACCENTED (F SPORT)



Interior Trim: F Sport White



Ornamentation Option: Black

SMOOTH LEATHER-ACCENTED (F SPORT)



Interior Trim: F Sport Black



Ornamentation Option: Black

SMOOTH LEATHER-ACCENTED (F SPORT)



Interior Trim: F Sport Flare Red



Ornamentation Option: Black



Lexus reserves the right to vary and discontinue the current interior and exterior colours, trims and colour/trim/model combinations. Colours and trims displayed here are a guide only and may vary from actual colours due to printing/display process. See your Lexus dealer to confirm colour/trim/model availability when ordering your vehicle.



LEXUS OWNERSHIP SOLUTIONS

Lexus Ownership Solutions allows you to determine your finance costs and know the Guaranteed Future Value (GFV) of your vehicle from the outset. It offers you choice, control and certainty. In short, everything you'd expect from Lexus.*

How does Lexus Ownership Solutions work?

- You choose the deposit that best fits your needs.
- You choose your term.**
- You decide on the estimated kilometres you think the vehicle will have travelled at the end of the term (the End Odometer). The End Odometer will also include any kilometres already on the vehicle.
- Lexus Financial Services (LFS) then determines the GFV of your vehicle and calculates your monthly repayments with a final payment equal to the GFV. The GFV is the minimum value of your Lexus at the end of your finance contract. So, if you choose to return your Lexus at the end of the term, LFS will pay you the GFV which will be put towards the remaining balance owing on your account (subject to fair wear and tear conditions and agreed kilometres being met).

The end of the term? Simply replace, retain or return.

At the end of your term you can choose to:

- Replace or sell your Lexus using the trade-in value or sale price to pay the remaining balance of your account.
- Retain your Lexus and simply pay the remaining balance of your account (including final payment).
- Alternatively, return your Lexus and, subject to fair wear and tear conditions and the agreed kilometres being met, we'll put the GFV towards the final payment on your account.

Choosing your deposit - what is best for you?

With the flexibility of Lexus Ownership Solutions, you can choose the deposit that best fits your current needs.

- If, for example, you have funds tied up in other investments, you can choose to finance your new Lexus with a zero deposit.††
- Alternatively, by using a larger deposit, you can lower your monthly repayments.
- Better still, compared to other finance options over a similar term with no GFV or equivalent balloon final payment, Lexus Ownership Solutions can provide lower monthly repayments.†††

Want more certainty?

With Lexus Ownership Solutions, you've got the reassurance that at the end of the term (subject to fair wear and tear and agreed kilometres being met) you'll never owe more than your vehicle's worth to LFS. In other words, you don't have to worry about what your vehicle will be worth in the future because you know its minimum value from the outset.*

What happens in the case of the unexpected?

If your vehicle incurs damage and does not meet the Fair Wear and Tear guidelines, LFS will give you the opportunity to have your vehicle repaired. Otherwise, LFS can organise the repairs and deduct the cost from your GFV. This adjusted GFV will then be the price that LFS will offer you if you return the vehicle at the end of your term. Of course, if you retain the vehicle, the condition doesn't matter, however, if you replace it or sell it privately, the condition will obviously impact your sale price.

So what does your accountant think?

Naturally, we think Lexus Ownership Solutions is an excellent, innovative way to put you in control of buying a new Lexus. That said, we suggest you seek independent advice to ensure Lexus Ownership Solutions is right for you.

Wouldn't it be great if Lexus Ownership Solutions was just the beginning?

Lexus' innovations and commitment to customer service extend well beyond Lexus Ownership Solutions. Once you purchase a new Lexus, you'll become a member of the Lexus Encore Privileges Programme and enjoy a host of exclusive benefits.†

For further details, simply visit your nearest Lexus dealer or see lexus.com.au/services/benefits/

* The Guaranteed Future Value (GFV) is the minimum value of your new or approved demonstrator Lexus at the end of your finance contract, as determined by Lexus Financial Services (LFS). If you decide to return your car to Lexus at the end of your term, LFS will pay you the agreed GFV which will be put against your final payment, subject to fair wear and tear conditions and agreed kilometres being met. The information provided is general in nature. You should seek your own financial advice to determine whether Lexus Ownership Solutions is appropriate for your individual circumstances. Terms, conditions, fees and charges apply. Lexus Ownership Solutions GFV products are available to approved customers of Lexus Financial Services, a division of Toyota Finance Australia Limited ABN 48 002 435 181, AFSL and Australian Credit Licence 392536.

** Up to four years.

††† Total interest charges will be higher if a GFV or balloon final payment is selected.

† Terms and Conditions apply.

†† Approved applicants only. Terms and conditions apply. A deposit may be required for capacity reasons.



THE BENEFITS OF ENCORE

The benefits of being a Lexus owner go far beyond the intrinsic pleasure of driving the vehicle. From the moment you're handed the keys, you'll also be welcomed to the Lexus Encore Privileges Programme† - offering a range of exclusive initiatives that reaffirm our ongoing pursuit of perfection.

It all means you'll enter a world of benefits that extends to every corner of life. A world where everything's just that much easier and works that much more seamlessly. And a world where, should trouble ever find you, you can always find a helping hand.

Take our After Sales Service as an example. Both our technology and technicians are at the forefront of automotive innovation. And our profound understanding of every single component of your Lexus means we can do more to ensure it's a pleasure to drive today, and in the long run. It's a world you've always belonged in. A privilege unique to Lexus drivers.

Silver service

Every aspect of your Lexus is built around your comfort and convenience, so it's fitting that when it's ready for a service, we'll come and pick it up from you and provide you with a complimentary loan car while we're inspecting. Plus, when we return your Lexus, it will have received a complimentary wash and interior vacuum.

Experience Lexus outside your vehicle

We're constantly striving to enhance the Lexus ownership experience. It's what we're known for. Our luxury events will be the perfect way to experience the Lexus lifestyle and network with other owners. Tickets may be limited, so be quick to secure your place.

Peace of mind

Wherever you are and whatever you're doing, you can relax, because with our Encore Privileges Programme, you have the 24-hour support of Lexus DriveCare*. We'll look after your car and, just as importantly, we'll look after you and your passengers.

See lexus.com.au/services/benefits for details.

†Encore Privileges apply for the period of the standard four-year/100,000km factory warranty (whichever occurs first) or such other standard factory warranty offered by Lexus from time to time on new Lexus vehicles. They do not apply to any certified or extended warranty products. Lexus Australia reserves the right to change, without notice, any benefits specified. Benefits should be confirmed at the time of ordering with your authorised Lexus dealer. Benefits are subject to Encore terms and conditions. For further information on these conditions, please contact your Lexus dealer. To the extent permitted by law, Lexus Australia will not be liable for any damage, loss or expense incurred in relation to the benefits specified above (whether by way of negligence or otherwise). Lexus Australia, a division of Toyota Motor Corporation Australia Limited ABN 64 009 686 097 155 Bertie St, Port Melbourne 3207.

*Full DriveCare details and conditions are available at lexus.com.au/services/benefits or you can phone 1800 253 987. Lexus Australia reserves the right to change, without notice, any benefits specified. Benefits should be confirmed at the time of ordering with your authorised Lexus dealer. To the extent permitted by law, Lexus Australia will not be liable for any damage, loss or expense incurred in relation to the benefits specified above (whether by way of negligence or otherwise). Lexus Australia, a division of Toyota Motor Corporation Australia Limited ABN 64 009 686 097, 155 Bertie St, Port Melbourne Vic 3207.

MAIN FEATURES UX 250H / UX 200

		LUXURY	F SPORT	SPORTS LUXURY
EXTERIOR	Privacy glass (rear)	EP1/ EP2	•	•
	Moonroof	EP2	EP1/ EP2	EP
	Heated door mirrors; LED side turn signal lamp, power folding	•	•	•
	Door handles; foot area illumination	•	•	•
	17" alloy wheels	•		
	F Sport 18" alloy wheels		•	
	18" Alloy Wheels			•
	F Sport Exterior Styling - front & rear bumper, grille & badge		•	
	Temporary Spare Wheel	•		
	Roof Rails	•	•	•
INTERIOR	7-inch colour Thin Film Transistor (TFT) multi-information display	•		•
	8-inch Thin Film Transistor (TFT) multi-information display		•	
	Colour Head-Up Display		EP2	EP
	Analogue Clock with GPS Correction Function	•	•	•
	Centre console box	•	•	•
	Vanity Mirrors and Lamps (Front seats)	•	•	•
	Cupholders (Front and outboard rear seats)	•	•	•
	Door pockets (Front doors)	•	•	•
	Leather-Accented Steering Wheel and Gear Knob	•	•	•
	Lexus Climate Concierge	•	•	•
OPERATION	Power tilt and telescopic steering column; auto-away/ auto-return function	•	•	•
	Wireless Phone Charger ¹	EP1/ EP2	•	•
	Steering Wheel Control Switches	•	•	•
	Electric Park Brake	•	•	•
	Drive Mode Select - ECO / NORMAL / SPORT	•		•
	Drive Mode Select - ECO / NORMAL / SPORT S / SPORT S+		•	
	Smart Entry and Start System	•	•	•
	Smart Key Card		EP2	EP
	Panoramic View Monitor		EP2	•
	Parking and Clearance Sonar	•	•	•
NAVIGATION AND AUDIO	Parking Assist Monitor	•	•	•
	Handsfree Power Back Door	EP1/ EP2	•	•
	10.3" Multimedia Screen with Lexus Remote Touch Controller	•	•	•
	Satellite Navigation System ² with SUNA Live Traffic Updates ³	•	•	•
	8-Speaker Lexus Premium Sound System; AM/FM radio, in-dash DVD player, MP3 and WMA (Windows Media Audio) play compatible	•	•	
	13-Speaker Mark Levinson ^{®7} Premium Surround Sound System; AM/FM radio, in-dash DVD player, MP3 and WMA play compatible, Clari-Fi & QLS (Quantum Logic Surround)		EP2	•
	Bluetooth [®] Mobile Phone Connectivity, hands free calling, wireless connect ⁴	•	•	•
DAB+	•	•	•	
2 USB ports/mini-jack ⁵	•	•	•	
SEATS	Nulux interior trim	•		
	Leather-accented seats		•	•
	10-way Driver, 8-way Passenger Power Adjust Front Seats	•	•	•
	Heated Front Seats	•	•	•
	Ventilated Front Seats		•	•
Driver Seat Memory		•	•	

MAIN FEATURES UX 250H / UX 200

		LUXURY	F SPORT	SPORTS LUXURY
SAFETY	Lexus Safety System+, including Pre-Collision System with Pedestrian (And Cyclist) Detection ⁶ , Radar Active Cruise Control, Lane Trace Assist, Traffic Sign Recognition & AHB (Automatic High Beam)	•	•	•
	Blind Spot Monitor System	•	•	•
	Parking Support Alert (PKSA)	•	•	•
	Vehicle Stability Control (VSC)	•	•	•
	Anti-lock Brake System (ABS) with Electronic Brake force Distribution (EBD)	•	•	•
	Brake Assist system	•	•	•
	Hill-start Assist Control	•	•	•
	Bi-Beam LED headlamps; auto-levelling system	•		
	3-eye Bi-Beam LED headlamps; auto-levelling system		•	•
	Headlamp cleaners	EP1 / EP2	•	•
	LED Daytime Running Lamp (DRL)	•	•	•
	LED Fog Lamps	•	•	•
	8 SRS Airbags	•	•	•
	3-Point ELR Seatbelts (All seats)	•	•	•
Pretensioners and force limiters (Front seats)	•	•	•	
Anchor bars for fixing ISOFIX-compliant child seat (Outboard rear seats)	•	•	•	
CRS (Child Restraint System) top tether anchors (Outboard rear seats)	•	•	•	
Antitheft System	•	•	•	
TPWS (Tire Pressure Warning System)	•	•	•	

¹Only Qi-supported devices are compatible. Refer to your device manufacturer to determine your device's compatibility. Some devices may require the purchase of a Qi-supported accessory to enable wireless charging.

²Navigation coverage varies based on vehicle location.

³Suna™ GPS Traffic Updates may vary based on vehicle location. Not all road incidents and congestion may be covered. See sunatrafic.com.au for details.

⁴The Bluetooth® word mark is owned by Bluetooth SIG, Inc. Not all devices will be compatible and functionality varies depending on the device.

⁵Not all devices will be compatible. Functionality varies depending on device.

⁶Pre-Collision Safety System/PCS with Pedestrian and Cyclist Detection is a driver assist feature only, designed to operate when certain technical conditions are met, and is not a substitute for safe driving practices. Driver remains responsible at all times for safe driving. Pedestrians and cyclists may not be detected in certain conditions. Pedestrians may not be detected including in low and harsh light, where partially obstructed from view, where clothing or movement obscures or effects body contours, persons under 1 metre or over 2 metres tall and where carrying or pushing large objects.

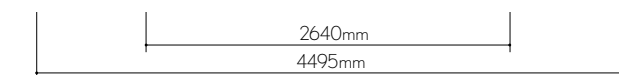
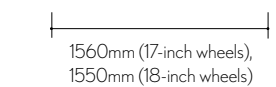
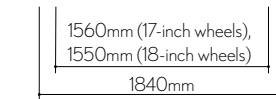
⁷Mark Levinson® is a registered trademark of Harman International Industries, Incorporated.

SPECIFICATIONS

UX 200

UX 250h

	UX 200	UX 250h	
DIMENSIONS AND WEIGHT (APPROXIMATE)	Overall Length	4495mm	4495mm
	Overall Width	1840mm	1840mm
	Overall Height	1520mm	1520mm
	Wheelbase	2640mm	2640mm
	Tread	Front: 1560mm ¹ , 1550mm ² Rear: 1560mm ¹ , 1550mm ²	Front: 1560mm ¹ , 1550mm ² Rear: 1560mm ¹ , 1550mm ²
	Kerb Weight ⁶	1490-1540kg	UX 250h 2WD: 1575-1625kg UX 250h AWD: 1635-1680kg
	Gross Vehicle Mass (GVM) ³	1980kg	UX 250h 2WD: 2110kg UX 250h AWD: 2110kg
	Seating Capacity	5	5
Boot Capacity (L)	327 ¹ ; 371 ²	UX 250h 2WD: 324 ¹ ; 364 ² UX 250h AWD: 334	
CHASSIS	Suspension	MacPherson strut type (front) Trailing Wishbone (rear)	MacPherson strut type (front) Trailing Wishbone (rear)
	Steering System	EPS (Electric Power Steering)	EPS (Electric Power Steering)
	Brakes	Front: 305 / 28mm ventilated discs Rear: 281/ 12mm solid discs	Front: 305 / 28mm ventilated discs Rear: 281/ 12mm solid discs
	Minimum Turning Circle	10.4m	10.4m
	Fuel Tank Capacity (L)	47	43
	Tyres	215/60R17 96H (Luxury); 225/50RF18 95V (F Sport /Sports Luxury)	215/60R17 96H (Luxury); 225/50RF18 95V (F Sport /Sports Luxury)
ENGINE	Type	Petrol	Petrol
	Capacity (cc)	1987	1987
	Maximum Power	126kW @ 6600rpm	107kW @ 6000rpm
	Maximum Torque	205Nm @ 4800rpm	188Nm @ 4400-5200rpm
	Fuel Economy (Combined, L/100km) ⁴	5.8	UX 250h 2WD: 4.5 UX 250h AWD: 4.7
	Carbon Dioxide (Combined, g/km) ⁵	132	UX 250h 2WD: 103 UX 250h AWD: 107
DRIVETRAIN	Driven Wheels	2WD	2WD / AWD (F Sport & Sports Luxury only)
	Transmission	Direct Shift-CVT	Electronic continuously variable transmission
MOTOR	Type		UX 250h 2WD: Permanent magnet motor UX 250h AWD: Permanent magnet motor & Induction motor
	Max. Output (kW)		2WD: 80 AWD: 80 (front); 5.3 (rear)
	Max. Torque (Nm)		2WD: 202 AWD: 202 (front); 55 (rear)
	Total System Output (kW)		131
BATTERY	Type		Sealed Ni-MH (Nickel-Metal Hydride)



¹Luxury grade.

²F Sport & Sports Luxury grades.

³Gross Vehicle Mass (GVM) is the total permissible combined weight of the vehicle, including occupants, fuel and cargo. Vehicle weights/mass and dimensions are approximate and subject to individual vehicle variances. Vehicles should be individually weighed and measured before fitting any accessories, towing or designing any compatible trailer/caravan or otherwise using the vehicle in any way that depends on this value.

⁴Achieved in test conditions. Actual fuel consumption may vary depending on driving conditions/style, vehicle condition and options/accessories fitted. Fuel consumption data provided for comparison purposes only.

⁵Emissions vary depending on driving conditions/style, vehicle conditions and options/accessories.

⁶Vehicle weights/mass/volumes and dimensions are approximate and subject to individual vehicle variances. Vehicles should be individually weighed and measured before fitting any accessories, towing or designing any compatible trailer/caravan or otherwise using the vehicle in any way that depends on this value.