

## Features

<b>Transmission</b>		Tilt adjustable steering wheel	✓
6-speed manual	✓	Cloth 'sports' bucket seats and door inserts	✓
6-speed Activematic with paddle shift	opt	Leather 'sports' bucket seats	opt 1
<b>Exterior</b>		Leather-wrapped: steering wheel	✓
Alloy wheels	✓	gear shift knob	✓
Soft top with rear window (glass) demister	✓	handbrake handle	✓
Detachable hard top with rear window (glass) demister	opt	Front seats with: rake and slide adjustment	✓
Body coloured power mirrors	✓	seat back pocket (passenger)	✓
Power windows	✓	integral head restraints	✓
Chrome exhaust extension	✓	Seat back style bars	✓
Body coloured front and rear bumpers	✓	Vanity mirrors (driver and front passenger)	✓
Rear moulded mudflaps	✓	Storage box (behind both seats)	✓
<b>Instrumentation</b>		Lockable rear console box and glove box	✓
Tachometer, temperature gauge and electronic odometer	✓	Front 2-speed wipers with intermittent function	✓
Low fuel warning light	✓	Interior release for boot and fuel filler door	✓
Oil pressure gauge	✓	'Windblocker' aero board	✓
Automatic transmission indicator in instrument cluster	opt	Driver's left footrest	✓
Digital clock	✓	Puncture repair kit and compressor	✓
Critical function warning lights/chimes	✓	Cupholders	✓
<b>Lights</b>		Front door bottle holders	✓
Halogen headlamps	✓	<b>Safety and Theft Prevention</b>	
Front fog-lamps	✓	Anti-lock Braking System (ABS)	✓
Interior dome lamp	✓	Torque-sensing Limited Slip Differential (LSD)	manual only
Illuminated ignition key surround	✓	Front SRS airbags (driver and passenger)	✓
Cargo room lamp	✓	Side SRS airbags (driver and passenger)	✓
Lights-left-on sound warning	✓	Remote central locking (2 transmitters with retractable key)	✓
Instrument panel light dimmer	✓	Engine immobiliser	✓
<b>Interior</b>		Seat-belts with pre-tensioners and load-limiters	✓
Air-conditioning	✓	High mount stop lamp	✓
Cruise control	✓	Day/night rear vision mirror	✓
Audio system with: AM/FM digital tuner	✓	One touch (down only) power window (driver and passenger)	✓
CD player, in-dash 6-disc	✓	High backed bucket seats	✓
speakers, number of	6 (opt 1:7)	Side impact door beams	✓
Bose® 200W premium audio system	opt 1	Front and rear crumple zones	✓
Steering wheel with audio and cruise control switches	✓	Left-hand-side convex (wide angle) exterior mirror	✓

For further information visit [mazda.com.au](http://mazda.com.au) or Freecall 1800 034 411. opt 1 – Leather and Bose® Pack option.

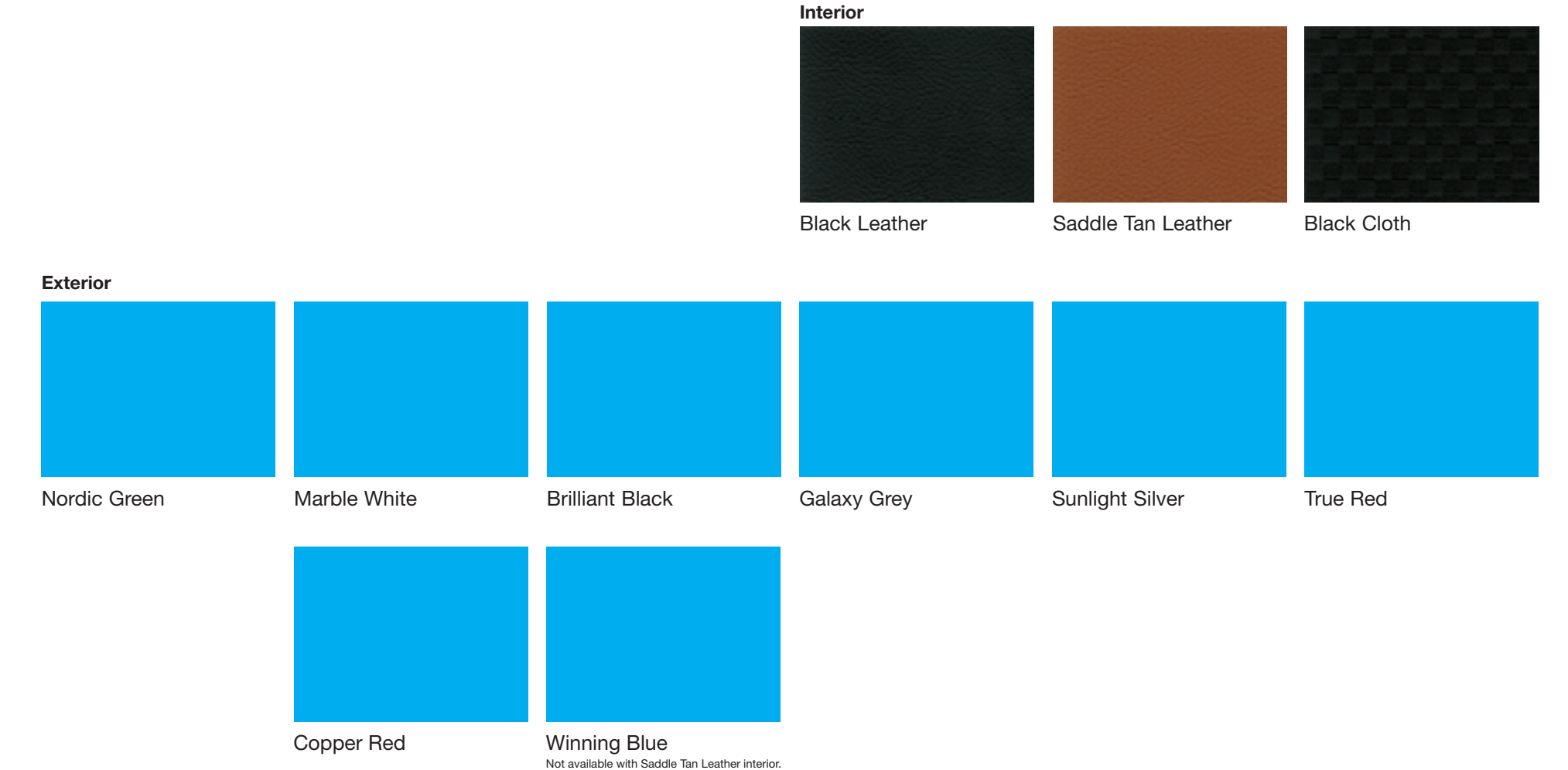
## Specifications

<b>Engine</b>			
Engine type		2.0 litre in-line 4 cylinder	16 valve DOHC S-VT
Engine capacity	cc	1,998	
Bore and stroke	mm	87.5 x 83.1	
Compression ratio		10.8 : 1	
Maximum power	kW	118 @ 6,700rpm	
Maximum torque	Nm	188 @ 5,000rpm	
Throttle control		Electronic (drive-by-wire)	
Fuel system		Electronic fuel injection	
Fuel tank capacity	litres	50	
Fuel consumption	man (combined)*	l/100km	8.5
	auto (combined)*	l/100km	8.8
Recommended fuel		Premium unleaded (min. 95 RON)	
<b>Transmission Ratios</b>			
1st	man/auto	3.709 / 3.538	
2nd		2.190 / 2.060	
3rd		1.536 / 1.404	
4th		1.177 / 1.000	
5th		1.000 / 0.713	
6th		0.832 / 0.582	
Reverse		3.603 / 3.168	
Final drive		3.727 / 4.100	

<b>Chassis and Suspension</b>			
Brake type	front		Ventilated disc
	rear		Solid disc
Brake diameter	front	mm	290
	rear	mm	280
Suspension	front		Independent double wishbone with mono-tube shock absorbers
	rear		Multi-link (five links per side) with mono-tube shock absorbers
Front suspension strut tower brace bar			Equipped
Steering			Power assisted (engine revolution sensing) rack and pinion
Turning circle	kerb to kerb	m	9.4
Tyres			205/45 R17 84W
Wheels			17 x 7.0 J (alloy)
<b>Dimensions</b>			
Overall length		mm	3,995
Overall width		mm	1,720
Overall height		mm	1,245
Wheelbase		mm	2,330
Ground clearance	laden	mm	118
Track	front	mm	1,490
	rear	mm	1,495
Cargo room	volume	litres	150
<b>Weights</b>			
Kerb weight	man	kg	1,105
	auto	kg	1,122

\*Fuel consumption figures are based on ADR81/01 test results. They are useful in comparing the fuel consumption of different vehicles. They may not be the fuel consumption achieved in practice. This will depend on traffic and road conditions and how the vehicle is driven. All care is taken to ensure the accuracy of this brochure at the time of publication. Specifications, features and model availability may vary from State to State and may change without notice. Please refer to [mazda.com.au](http://mazda.com.au) or consult your Mazda Dealer prior to placing an order to ascertain current information on model availability, specifications, options, features and prices. Mazda Australia Pty Limited will not be liable for any loss arising from the information in this brochure, whether in negligence or otherwise. Mazda Australia Pty Limited ABN 78 004 690 804, 385 Ferntree Gully Road, Mt Waverley, Victoria 3149. Mazda 3-year Unlimited Kilometre Warranty and 6-year Panel Protection Warranty, is available on all Mazda passenger vehicles and Tribute 4WD. Some colours will be available only on irrevocable order. Please refer to your dealer. Due to the nature of the printing process, colours may vary from those shown in this brochure. Ask your dealer to show you a product sample. Published, August 2005. MAZ712.

## MX-5 colours



MAZ712\_MX5\_Spec\_Sheet.indd 1

TITLE: MAZ712\_MX5\_Spec\_Sheet.indd DATE: 11/05/05 PROOF No: #01  
 SIZE: 193mm X 84mm (190x282+250mm folded) COL: CMYK INK WEIGHT: 360INK  
 RES / DPI: 300 dpi PROOF TYPE: Sheetfed Satin OUTPUT SIZE: Proof output @ 100%  
 IMAGES: TBA RGB/CMYK WORKFLOW: RGB FIRST ART: Marnie Kirkness

STUDIO ARTIST: \_\_\_\_\_ SPELLCHECKED:  FLIGHTCHECKED:  RGB/CMYK WORKFLOW: \_\_\_\_\_  
 CREAT.DIRECTOR: \_\_\_\_\_ ART DIRECTOR: \_\_\_\_\_ WRITER: \_\_\_\_\_ PROOFREADER: \_\_\_\_\_  
 ACC MANAGER: \_\_\_\_\_ PROD.MANAGER: \_\_\_\_\_ CLIENT: \_\_\_\_\_ FIRST ART: \_\_\_\_\_

TITLE: MAZ712\_MX5\_Spec\_Sheet.indd DATE: 11/05/05 PROOF No: #01  
 SIZE: 193mm X 84mm (190x282+250mm folded) COL: CMYK INK WEIGHT: 360INK  
 RES / DPI: 300 dpi PROOF TYPE: Sheetfed Satin OUTPUT SIZE: Proof output @ 100%  
 IMAGES: TBA RGB/CMYK WORKFLOW: RGB FIRST ART: Marnie Kirkness

STUDIO ARTIST: \_\_\_\_\_ SPELLCHECKED:  FLIGHTCHECKED:  RGB/CMYK WORKFLOW: \_\_\_\_\_  
 CREAT.DIRECTOR: \_\_\_\_\_ ART DIRECTOR: \_\_\_\_\_ WRITER: \_\_\_\_\_ PROOFREADER: \_\_\_\_\_  
 ACC MANAGER: \_\_\_\_\_ PROD.MANAGER: \_\_\_\_\_ CLIENT: \_\_\_\_\_ FIRST ART: \_\_\_\_\_

TITLE: MAZ712\_MX5\_Spec\_Sheet.indd DATE: 11/05/05 PROOF No: #01  
 SIZE: 193mm X 84mm (190x282+250mm folded) COL: CMYK INK WEIGHT: 360INK  
 RES / DPI: 300 dpi PROOF TYPE: Sheetfed Satin OUTPUT SIZE: Proof output @ 100%  
 IMAGES: TBA RGB/CMYK WORKFLOW: RGB FIRST ART: Marnie Kirkness

STUDIO ARTIST: \_\_\_\_\_ SPELLCHECKED:  FLIGHTCHECKED:  RGB/CMYK WORKFLOW: \_\_\_\_\_  
 CREAT.DIRECTOR: \_\_\_\_\_ ART DIRECTOR: \_\_\_\_\_ WRITER: \_\_\_\_\_ PROOFREADER: \_\_\_\_\_  
 ACC MANAGER: \_\_\_\_\_ PROD.MANAGER: \_\_\_\_\_ CLIENT: \_\_\_\_\_ FIRST ART: \_\_\_\_\_

15/8/05 12:50:53 PM





## MX-5 at a glance



### MX-5

Our iconic sports car has been reinvented, with state-of-the-art design and features to deliver Zoom-Zoom in its purest form.

- 2.0 litre 16 valve DOHC S-VT engine
- 6-speed manual
- 6-speed Activematic with paddle shift (optional)
- 17 inch alloy wheels
- Body coloured power mirrors
- Power windows
- Body coloured front and rear bumpers
- Chrome exhaust extension
- Detachable hard top with rear glass demister (optional)
- Cruise control
- Air-conditioning
- AM/FM digital tuner
- 6 disc in-dash CD player
- Steering wheel with audio and cruise control switches
- Tilt adjustable steering wheel
- Cloth 'sports' bucket seats and door inserts
- Leather wrapped steering wheel, gear shift knob and handbrake handle
- Seat back style bars
- Anti-lock Braking System (ABS)
- Front SRS airbags (driver and passenger)
- Side SRS airbags (driver and passenger)
- Remote central locking with retractable key
- Seat-belts with pre-tensioners and load-limiters

### MX-5 Leather Pack

Adds leather 'sports' bucket seats and a 200W Bose® audio system. You'll want to sit back and enjoy the performance.

- 2.0 litre 16 valve DOHC S-VT engine
- 6-speed manual
- 6-speed Activematic with paddle shift (optional)
- 17 inch alloy wheels
- Body coloured power mirrors
- Power windows
- Body coloured front and rear bumpers
- Chrome exhaust extension
- Detachable hard top with rear glass demister (optional)
- Cruise control
- Air-conditioning
- AM/FM digital tuner
- 6 disc in-dash CD player
- Bose® 200W premium audio system with seven speakers
- Steering wheel with audio and cruise control switches
- Tilt adjustable steering wheel
- Leather 'sports' bucket seats
- Leather wrapped steering wheel, gear shift knob and handbrake handle
- Silver seat back style bars
- Anti-lock Braking System (ABS)
- Front SRS airbags (driver and passenger)
- Side SRS airbags (driver and passenger)
- Remote central locking with retractable key
- Seat-belts with pre-tensioners and load-limiters

mazda.com.au

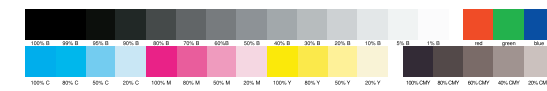
ZOOM-ZOOM

## MX-5 Specifications



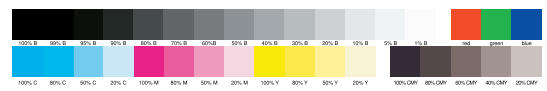
MAZ7172\_MX5\_Spec\_Sheet.indd 2

TITLE: MAZ7172\_MX5\_Spec\_Sheet.indd DATE: 11/05/05 PROOF No: #01  
 SIZE: 150mm X 84mm (190x282+280mm fold-out) COL: CMYK INK WEIGHT: 360INK  
 RES / DPI: 300 dpi PROOF TYPE: Sheetfed Satin OUTPUT SIZE: Proof output @ 100%  
 IMAGES: TBA RGB/CMYK WORKFLOW: RGB FIRST ART: Marnie Kirkness



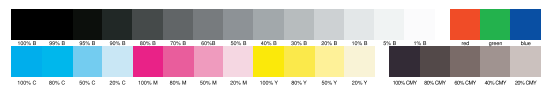
STUDIO ARTIST: \_\_\_\_\_ SPELLCHECKED:  FLIGHTCHECKED:  RGB/CMYK WORKFLOW: \_\_\_\_\_  
 CREAT.DIRECTOR: \_\_\_\_\_ ART DIRECTOR: \_\_\_\_\_ WRITER: \_\_\_\_\_ PROOFREADER: \_\_\_\_\_  
 ACC MANAGER: \_\_\_\_\_ PROD.MANAGER: \_\_\_\_\_ CLIENT: \_\_\_\_\_ FIRST ART: \_\_\_\_\_

TITLE: MAZ7172\_MX5\_Spec\_Sheet.indd DATE: 11/05/05 PROOF No: #01  
 SIZE: 150mm X 84mm (190x282+280mm fold-out) COL: CMYK INK WEIGHT: 360INK  
 RES / DPI: 300 dpi PROOF TYPE: Sheetfed Satin OUTPUT SIZE: Proof output @ 100%  
 IMAGES: TBA RGB/CMYK WORKFLOW: RGB FIRST ART: Marnie Kirkness



STUDIO ARTIST: \_\_\_\_\_ SPELLCHECKED:  FLIGHTCHECKED:  RGB/CMYK WORKFLOW: \_\_\_\_\_  
 CREAT.DIRECTOR: \_\_\_\_\_ ART DIRECTOR: \_\_\_\_\_ WRITER: \_\_\_\_\_ PROOFREADER: \_\_\_\_\_  
 ACC MANAGER: \_\_\_\_\_ PROD.MANAGER: \_\_\_\_\_ CLIENT: \_\_\_\_\_ FIRST ART: \_\_\_\_\_

TITLE: MAZ7172\_MX5\_Spec\_Sheet.indd DATE: 11/05/05 PROOF No: #01  
 SIZE: 150mm X 84mm (190x282+280mm fold-out) COL: CMYK INK WEIGHT: 360INK  
 RES / DPI: 300 dpi PROOF TYPE: Sheetfed Satin OUTPUT SIZE: Proof output @ 100%  
 IMAGES: TBA RGB/CMYK WORKFLOW: RGB FIRST ART: Marnie Kirkness



STUDIO ARTIST: \_\_\_\_\_ SPELLCHECKED:  FLIGHTCHECKED:  RGB/CMYK WORKFLOW: \_\_\_\_\_  
 CREAT.DIRECTOR: \_\_\_\_\_ ART DIRECTOR: \_\_\_\_\_ WRITER: \_\_\_\_\_ PROOFREADER: \_\_\_\_\_  
 ACC MANAGER: \_\_\_\_\_ PROD.MANAGER: \_\_\_\_\_ CLIENT: \_\_\_\_\_ FIRST ART: \_\_\_\_\_

15/05 12:51:02 PM