

ASX



ASX

BUILT FOR OWNING THE CITY

Whatever you're doing, wherever you're going, do it in style with the Mitsubishi ASX. Built for the working week as much as the weekend, the compact ASX has stacks of storage, super smart technology, zippy performance and effortless style. Owning the city has never been this much fun.

ASX, BUILT FOR THE TIME OF YOUR LIFE.

Since 1917 Mitsubishi Motors has been at the forefront of technological innovation. Having launched the inventive Super-Select 4WD system and the world's first Plug-in hybrid electric SUV, our vehicles have been tested, trialled and triumphant in some of the earth's toughest terrain including the Dakar rally. These engineering milestones, together with our commitment to reliability and ingenuity sets us apart. As we continue to move forward, pushing the boundaries of innovation, you can rest assured your Mitsubishi has been built for the time of your life.

ASX is part of the all-thrilling, ever reliable Mitsubishi SUV range.





ASX

CUT THROUGH THE CRAWL



Don't get angry at the traffic, stay cool inside the comfortable, tech surrounds of your ASX.

Snuggle back into your seat and enjoy the balance of comfort, spaciousness, style and intelligent design that includes:

+ Smartphone Link Display Audio (SDA)^{*}, a true extension of your smartphone via Android Auto^{™1} or Apple CarPlay². Connected to a 7" touchscreen, you can access your phone's compatible apps and get direction, make calls, send and receive messages and listen to music from any source including DAB+ radio. With a smartphone storage tray and USB connectors in the centre console, everything is taken care of.

+ Find your perfect driving position with a soft touch leather, adjustable steering wheel with built in phone, audio and cruise control switches.

+ Generous legroom with space for five adults and 60/40 split fold rear seats for added flexibility.

+ Key-free convenience with Smart Key[®] that unlocks the doors and tailgate. Perfect for when the key is still in your pocket or purse, or your hands are full with shopping.

+ LS and Exceed models also let you power up your ignition with the touch of a button thanks to One Touch Start[®].

+ You can also experience warm indulgence with Exceed's heated front seats^{*} and leather seat facings^{*}.

Exceed model shown. *Exceed model only. ^Exceed and LS models only. ^Smartphone Link Display Audio (SDA) supports Android[™] 5.0 or higher/iOS 8.0 or higher for use with Android Auto[™] / Apple CarPlay. Smartphone Link Display Audio will not operate in areas with no service signal and may not operate in supported areas where the signal is weak. Users are responsible for all charges incurred using smartphones and iPhones to connect to Android[™] and CarPlay respectively. Some functions may not be available for use depending on the user's location. Only compatible Apps can be used. Android[™] and Android Auto[™] are trademarks of Google Inc. 2. Apple CarPlay and iPhone, are trademarks of Apple Inc., registered in the US and other countries.



ASX

DISTINCTIVE LIKE YOU



Looking good and feeling good is what Mitsubishi ASX is all about. From its fashionable front grille and shimmering chrome highlights to its black wheel arch-garnished 18" alloy wheels and LED Daytime Running Lamps, ASX turns heads while you turn those tight city streets.

LET THE GOOD TIMES ROLL

- + Pirouette on a 10 cent piece and score that precious park. The ASX's agility and manoeuvrability puts you wherever you want to be, without compromising on cargo or cabin space.
- + Let in the sun or the city lights with the Exceed's spectacular panoramic glass roof with electric retractable sunshade and LED mood lighting*.

- + Add a little bite to your style with a sleek, aerodynamic shark fin antenna.
- + Light your way and stay visible with halogen headlamps, LED Daytime Running Lamps and Automatic High Beam*.
- + Beat the rain with automatic rain sensors* that detect water on your windscreen and activate your wipers at just the right time and speed.
- + There's no twilight zone or dark tunnel vision with ASX's dusk sensing headlamps*.
- + Keeping your rear passengers UV protected with rear privacy glass*.

*Exceed model only. **ES ADAS, LS and Exceed models only. ^LS and Exceed models only. Exceed model shown.



ASX

BUILT FOR ESCAPE

Conquer the country with ASX's power and performance. Those city manoeuvres become freeway cruises with your choice of manual or CVT 2WD models powered by a 2.0L MIVEC petrol engine.

ZIPPY AND ECONOMICAL

The urban-friendly 2.0 litre 4 cylinder MIVEC engine is perfect for responsive city driving, boasting fuel economy combined with 110kW of power and 197Nm of torque.

EFFORTLESS AND STABLE

ASX automatic models are equipped with continuously variable transmission (CVT). It means the gear ratios are infinitely variable, and effortlessly attuned to operating at optimum RPM for greater power and economy, whatever your speed.

SMOOTH OPERATOR

Bumps and potholes suddenly seem less jolty thanks to the MacPherson strut front and multi-link rear suspension. In your ASX, shock absorbers and stabilisers are perfectly tuned for a sporty, comfortable ride.

Exceed model shown.





GUIDE. PROTECT. CONNECT.

MiTEC

Mitsubishi Motors Intuitive Technology or MiTEC, is an integrated system^ of brilliant innovations in action, working in unison to guide and protect, alert and connect, even entertain. It thinks like you, reacts like you, before you even know it. MiTEC delivers unsurpassed safety and next generation features to the modern-day driver.

These significant safety features coupled with Mitsubishi's Reinforced Impact Safety Evolution (RISE) body have earned ASX the maximum ANCAP safety rating of 5 stars so you can rest assured you're driving one of the safest cars on the road.



Blind Spot Warning^{#1} and Lane Change Assist^{#1}
Mitsubishi's Blind Spot Warning and Lane Change Assist helps you change lanes with confidence. The Lane Change Assist system sounds an audible alert and displays a blinking warning in the door mirror when the system detects a high collision probability with a vehicle coming from behind moving to the same direction within 3.5m from your vehicle's side or 70m from its rear bumper.



TESTED
2014 ★ ★ ★ ★ ★

^Please drive safely and never rely solely on these systems while driving. Drivers are fully responsible for their own safe driving. #ES ADAS and Exceed models only. 1. The detection and control capabilities of BSW and LCA are supplementary only and do not warn you of vehicles in blind spot every situation. BSW and LCA may not activate in some situations.



Rear Cross Traffic Alert^{#2}

Mitsubishi's Rear Cross Traffic Alert system helps detect a moving vehicle when reversing. It alerts you via a buzzer sound, and an indicator light appearing in the combination meter and blinking light in the side door mirror.



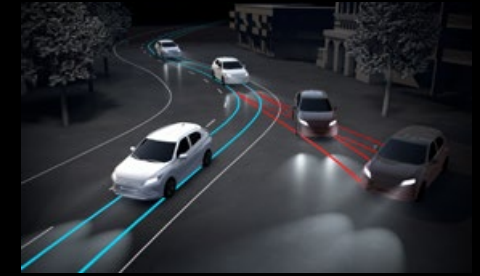
Lane Departure Warning[^]

Mitsubishi's Lane Departure Warning uses a camera to issue an audible alert and shows a warning on the multifunction display if your vehicle drifts from its lane while the turn signals are not operating.



Forward Collision Mitigation^{*3}

Mitsubishi's Forward Collision Mitigation system detects obstructions ahead and issues a visual and audio alert when there is a danger of collision, automatically applying the brakes to avoid collision or reduce impact.



Active Stability Control

Mitsubishi's Active Stability Control intuitively recognises when you over-steer or under-steer and applies the brake force to appropriate wheels to keep you stable through corners.



Active Traction Control

Mitsubishi's Active Traction Control helps maintain traction on most slippery or rugged surfaces. Active Traction Control automatically controls the engine output – so driving wheels are prevented from spinning. Sensing loss of traction in independent wheels it then applies braking force to that particular wheel and sends extra power and torque to other wheels with traction, to keep the vehicle moving and in control.



Hill Start Assist

Steep city streets or congested shopping mall ramps are no longer a problem with Mitsubishi's Hill Start Assist technology. It prevents the car from rolling backwards by maintaining braking force to give you time to move your foot from brake to accelerator.



Reverse Camera and Parking Sensors[^]

Mitsubishi's Reverse Camera and Parking sensors assist when parking in tight spots. Sensors detect and warn you if you're getting too close to objects behind you when reversing into a parking space.



Electronic Brakeforce Distribution

Mitsubishi's Electronic Brakeforce Distribution works hand-in-hand with your car's Anti-lock Braking Systems computer to assess load and distribute braking force between the front and rear wheels. When you have a load in the rear, it helps you stop in a shorter distance than standard brakes.



Anti-lock Braking System

Mitsubishi's Anti-lock Braking System allows the driver to maintain steering control of the vehicle and manoeuvre around obstructions in heavy braking situations.



Auto Dusk Sensing Headlamps[^]

Mitsubishi's Dusk Sensing Headlamps automatically illuminate in fading light or when travelling through a tunnel, allowing you to keep your hands on the wheel and your focus on the road ahead.



Auto Rain Sensing Wipers[^]

Mitsubishi's Rain Sensing Wipers activate automatically when moisture is detected on the windscreen, allowing you to keep your hands on the wheel and your focus on the road ahead.



Auto High Beam[†]

Mitsubishi's Auto High Beam detects both the headlights of oncoming vehicles and the tail lights of vehicles ahead, automatically switching between high or low beams.

[#]ES ADAS and Exceed models only. [^]ES ADAS, LS and Exceed models only. [†]LS and Exceed models only. ². Do not rely solely on this system, which may not detect all moving vehicles in certain conditions. ³. The detection and control capabilities of FCM are supplementary only and do not prevent collisions in every situation. Please read the operation manual carefully and be aware of these limitations.

KEY SPECIFICATIONS



	2WD				
	ES 2WD 5M/T	ES 2WD CVT	ES ADAS 2WD CVT	LS 2WD CVT	Exceed 2WD CVT
Type	2.0L 4cyl DOHC 16 valve MIVEC				
Displacement (cc)	1998				
Bore x Stroke (mm)	86.0 x 86.0				
Maximum Power (kW@rpm)	110 @ 6000				
Maximum Torque (Nm@rpm)	197 @ 4200				
Battery	55D23L				
Fuel type	Regular unleaded (Minimum 91 RON)				
Fuel tank capacity (L)	63				
Fuel consumption (ADR 81/02 litres per 100km)*	7.7				7.6
CO ² Emissions (grams per kilometre)	179				176
Suspension – front/rear	MacPherson strut with coil spring & stabiliser bar/Multi-link with stabiliser bar				
Brakes – front/rear	Ventilated discs/Rear discs				
Tyre size	225/55R 18 97H				
Wheel size	18"x7.0J Alloy Wheels				
Spare Wheel	Steel space saver spare wheel - T125/90D16				
Turning Circle – kerb to kerb (m)	10.6				
Gross vehicle mass (kg)	1970				
Kerb mass (kg)	1335				1365
Gross combination mass (kg)	3270				
Maximum payload (kg)	635				605
Maximum front axle mass (kg)	1030				
Maximum rear axle mass (kg)	1000				
Maximum towing capacity with trailer brakes (kg)	1300				
Maximum towing capacity without trailer brakes (kg)	750				
Maximum towball download (kg)	130				
Length (mm)	735				
Width (mm)	1355				
Width between wheel arches (mm)	1000				
Height (mm)	750				
Capacity (L)	393				
Length with 2nd row seats folded down (mm)	1475				
Capacity with 2nd row seats folded down (L)	1193				1143

* Australian Standard ADR 81/02. Figures to be used for comparison across vehicles. Driving conditions will affect actual results.

FEATURES

KEY	■	Standard	2WD			
	—	Not available	ES 2WD 5M/T	ES 2WD CVT	ES ADAS 2WD CVT	LS 2WD CVT
ENGINE/TRANS	2.0L 4cyl DOHC 16 valve MIVEC engine	■	■	■	■	■
	5 speed manual transmission	■	—	—	—	—
	Continuously Variable Transmission (CVT)	—	■	■	■	■
	INVECS III Smart Logic	■	■	■	■	■
	Electric power steering	■	■	■	■	■
EXTERIOR	18" alloy wheels - silver	■	■	■	—	—
	18" alloy wheels - two-tone	—	—	—	■	■
	Black wheel arch garnish	■	■	■	■	■
	LED Daytime Running Lamps (DRL)	■	■	■	■	■
	Halogen headlamps	■	■	■	■	■
	Fog lamps (front)	—	—	—	■	■
	Rear Roof spoiler with high mount stop lamp	■	■	■	■	■
	Door mirrors with integrated turn indicator	—	—	■	■	■
	Chrome exhaust tip	—	—	—	—	■
	Privacy glass	—	—	—	■	■
INTERIOR	Shark fin antenna	■	■	■	■	■
	Black roof rails	■	■	■	■	■
	Leather bound gearshift	■	■	■	■	■
	Leather bound piano black steering wheel	■	■	■	■	■
	Piano black centre panel	■	■	■	■	■
	Door trim leather look insert	—	—	—	—	■
	Chrome interior door handles	■	■	■	■	■
	Chrome Accented instrument cluster	■	■	■	■	■
	Carpet floor coverings	■	■	■	■	■
	Climate control air conditioning	■	■	■	■	■
COMFORT	Rear air conditioning ducts (underneath front seats)	■	■	■	■	■
	Rear heater ducts (underneath front seats)	■	■	■	■	■
	Pollen filter	■	■	■	■	■
	Tilt & telescopic steering column	■	■	■	■	■
	Rear window demisters	■	■	■	■	■
	Driver foot rest	■	■	■	■	■
	Driver and passenger assist grips	■	■	■	■	■
	Panoramic roof with electric retractable sunshade and LED mood lighting	—	—	—	—	■
	Cruise control	■	■	■	■	■
	Central door locking with keyless entry	■	■	■	■	■
CONVENIENCE	Smart Key	—	—	—	■	■
	One touch start system	—	—	—	■	■
	Steering wheel phone control switches	■	■	■	■	■
	Steering wheel audio control switches	■	■	■	■	■
	Steering wheel cruise control switches	■	■	■	■	■
	Door mirrors with power fold control	■	■	■	■	■
	Power windows front and rear (driver auto up & down)	■	■	■	■	■
Variable intermittent windscreen wipers	■	■	■	■	■	

	2WD				
	ES 2WD 5M/T	ES 2WD CVT	ES ADAS 2WD CVT	LS 2WD CVT	EXCEED 2WD CVT
CONVENIENCE	Intermittent rear wiper and washer	■	■	■	■
	Accessory power socket	■	■	■	■
	Front map lamps	■	■	■	■
	Cargo area lamp	■	■	■	■
	Coat hook	■	■	■	■
	Sunvisor with illuminated mirror	■	■	■	■
	Tachometer	■	■	■	■
	Trip meter	■	■	■	■
	Remote fuel filler release	■	■	■	■
	Remote boot release	■	■	■	■
	Welcome light / coming home light	■	■	■	■
	STORAGE	Floor console with upper and lower storage	■	■	■
Door pockets - front		■	■	■	■
Cup holders and bottle holders		■	■	■	■
Seat back pocket - passenger		■	■	■	■
Fully trimmed cargo area		■	■	■	■
Luggage tie-down hooks		■	■	■	■
Glovebox - illuminated		■	■	■	■
Cloth seat trim		■	■	■	—
Microsuede with leatherette bolsters		—	—	—	■
Leather seat facing		—	—	—	■
SEATING	Front Seats				
	Bucket seats	■	■	■	■
	Slide and recline adjustment	■	■	■	■
	Power driver seat	—	—	—	■
	Heated front seats	—	—	—	■
	Driver seat height adjustment	■	■	■	■
	Height adjustable headrests	■	■	■	■
	Second row seats				
	Recline and tumble fold function	■	■	■	■
	Centre armrest with cupholders	■	■	■	■
	Height adjustable headrests	■	■	■	■
	60:40 split folding function/recline function	■	■	■	■
	Smartphone Link Display Audio with 7" touch screen	■	■	■	■
	Android Auto™	■	■	■	■
Apple CarPlay	■	■	■	■	
Digital Audio Broadcast (DAB+) radio	■	■	■	■	
AM/FM radio/MP3 player	■	■	■	■	
USB Media Control (MP3/WMA/AAC/FLAC/Vorbis/WAV)	■	■	■	■	
USB Input	2	2	2	2	
4 speakers	■	■	■	—	
6 speakers (includes 2 tweeters)	—	—	—	■	
Bluetooth® phone connectivity & audio streaming with voice control	■	■	■	■	
Multi information display - includes trip computer, outside temperature, average fuel consumption	■	■	■	■	

	2WD				
	ES 2WD 5M/T	ES 2WD CVT	ES ADAS 2WD CVT	LS 2WD CVT	EXCEED 2WD CVT
SAFETY	Driver & front passenger SRS airbags	■	■	■	■
	Driver & front passenger side SRS airbags	■	■	■	■
	Curtain SRS airbags	■	■	■	■
	Driver knee airbag	■	■	■	■
	Electronic Brakeforce Distribution (EBD)	■	■	■	■
	Emergency Brake Assist System (EBA)	■	■	■	■
	Emergency Stop Signal Function (ESS)	■	■	■	■
	Smart Brake	■	■	■	■
	Reinforced Impact Safety Evolution (RISE) body	■	■	■	■
	Intrusion minimising brake pedal	■	■	■	■
	Reverse camera	■	■	■	■
	Reverse parking sensors	—	—	■	■
	3 point Emergency Locking Retractor (ELR) seatbelts (all seating positions).	■	■	■	■
	Front seatbelt pretensioners & force limiters	■	■	■	■
	Front seatbelt height adjustable shoulder anchorages	■	■	■	■
	Child proof rear door locks	■	■	■	■
	Child restraint anchorage points	3	3	3	3
	Day/night rear view mirror	■	■	—	—
	Electrochromatic rear view mirror	—	—	■	■
	ISO-Fix child seat mountings	2	2	2	2
MITSUBISHI INTUITIVE TECHNOLOGY	Forward Collision Mitigation (FCM)	—	—	■	■
	Lane Departure Warning (LDW)	—	—	■	■
	Blind Spot Warning System (BSW)	—	—	■	—
	Lane Change Assist (LCA)	—	—	■	—
	Rear Cross Traffic Alert (RCTA)	—	—	■	—
	Active Stability Control (ASC)	■	■	■	■
	Active Traction Control (ATC)	■	■	■	■
	Hill Start Assist (HSA)	■	■	■	■
	Automatic rain sensing wipers	—	—	■	■
	Automatic dusk sensing headlamps	—	—	■	■
SECURITY	Auto High Beam (AHB)	—	—	—	■
	Anti-theft encrypted engine immobiliser	■	■	■	■
	Theft protection alarm	■	■	■	■
	Steering lock	■	■	■	■
Auto relock function for central door locking	■	■	■	■	

BUILT TO MAKE IT YOURS

We may have city-sized the SUV, but our range of ASX accessories are bigger than ever. Ask your Mitsubishi dealer to show you what we've got to help you customise your ASX to your exact requirements. Mitsubishi Genuine Accessories go through an extensive program of design, development and stringent testing to ensure they meet all applicable government standards as well as Mitsubishi's own rigorous engineering specifications and performance targets. By using Mitsubishi Genuine Accessories, you get the best quality accessories that are both as durable and reliable as your sleek new ASX. If it's not genuine, don't risk it.





Nudge Bar



Headlamp Protectors



Bonnet Protector



Weathershields



Chrome Mirror Covers



Chrome Door Handle Covers



Front Mud Guards



Towbar Package



Chrome Towball



Outer Scuff Plates



Sports Rear Spoiler



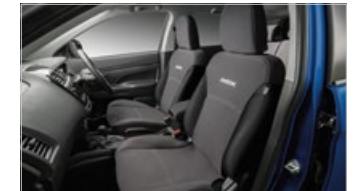
Roof Racks



Thule Luggage Pod



Alloy Fuel Lid



Neoprene Seat Covers – Front



Neoprene Seat Covers – Rear



Mats - Available in Carpet or Rubber



Cargo Liner – Hard Plastic



Cargo Area Protector - Full Cover



Cargo Barrier



Sports Gearshift Knob



Full Size Spare Wheel
& Accommodation Kit



Alloy Wheel Lock Nut Set

MITSUBISHI
DIAMOND
ADVANTAGE
 GENUINE ACCESSORIES

NOT GENUINE?
DON'T RISK IT.

Mitsubishi genuine accessories have been designed to maintain the integrity of your vehicle and work with all driving systems. Please ensure if fitting non-genuine accessories that they do not interfere with any of the vehicle safety sensors as this may lead to system malfunction and/or false activation. Some accessories are not offered by Mitsubishi on certain models as they interfere with vehicle safety sensors. GENUINE ACCESSORY WARRANTY Mitsubishi Motors Australia Limited warrants that Genuine Accessories will be free from defects in material under conditions of normal use and service within Australia. When Genuine Accessories are fitted prior to the owner taking delivery of the vehicle, Genuine Accessories are covered by a 36 months or 100,000km Warranty. When Genuine Accessories are fitted after the owner has taken delivery of the new Vehicle, Genuine Accessories are warranted for whichever is the greater of the following • The balance of 36 months or 100,000km (whichever occurs first) from date of vehicle delivery; or • 12 months or 20,000km (whichever occurs first) from date of fitment. Pictures shown for illustration purpose and may not be product specific. Please check with your Mitsubishi dealer for specific model application.

COLOUR



White



Starlight (P)



Red (M)



Black (P)



Lightning Blue (P)



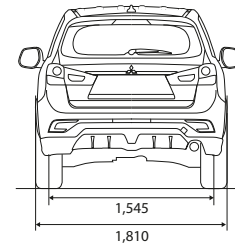
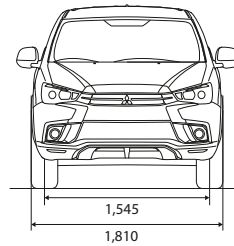
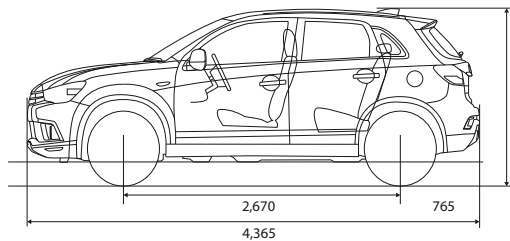
Sterling Silver (M)



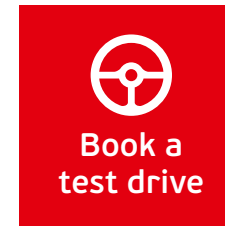
Titanium (M)

(M) Metallic
(P) Pearlescent
Optional extras

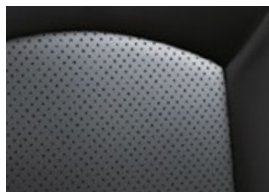
EXTERIOR DIMENSIONS (MM)



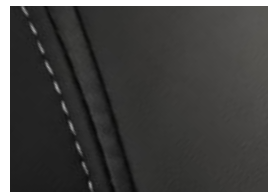
Ground Clearance Petrol – 205mm



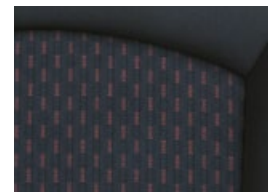
UPHOLSTERY



Exceed
– Black Leather
seat facings



LS
– Microsuede
with leatherette
bolsters



ES, ES ADAS
– Black Cloth



All Mitsubishi Motors vehicles come with the Mitsubishi Diamond Advantage[^] – Warranty, Capped Priced Servicing and Roadside Assistance so that no matter where the road takes you, we will be there with you. Ask your Dealer or visit Mitsubishi-motors.com.au to find out more.

^Conditions apply. Excludes Government, Rental and National Fleet customers. See mitsubishi-motors.com.au for further information. Always consult your authorised Mitsubishi Dealer for the latest details on specifications, options, prices, availability and conditions on New Vehicle warranty. All product illustrations and specifications referred to herein are believed to be correct at the time of publication approval. Subject to any applicable Federal, State or Territory Laws or ordinances, which may apply from time to time, Mitsubishi Motors Australia Limited reserves the right, without notice, or obligation, to discontinue or make changes to designs, specifications, colours and materials of the options and products referred to herein at any time without incurring any liability to any purchaser thereof. © Mitsubishi Motors Australia Limited. ABN 53 007 870 395 ASX0818 19MY MMA0969