



**LOVE THAT CAR**

**MIRAGE**

# THE COMPACT SEDAN THAT FITS YOUR LIFE.

Everything you've ever wanted in a compact sedan is here in the new Mirage. From outstanding fuel economy to ease of manoeuvrability, it will meet your highest expectations. But the new Mirage sedan doesn't stop there. The interior is surprisingly roomy and packed with so many standard features, that it's sure to heighten your driving pleasure. In fact, the Mirage sedan is in a class of its own. The attractive exterior with a bold chrome-enhanced front and wide stable rear is aerodynamically shaped to boost performance and fuel efficiency. And the more you drive the new Mirage sedan, the more you'll appreciate the little extras that make life and driving a joy.



LS model shown



Overseas model shown

## IMPRESSIVE COMFORT TO SHARE WITH YOUR PASSENGERS.

Welcome to a surprisingly roomy and comfortable interior space that's one of the best in its class. The simple yet stylish interior of Mirage sedan will surround you and your passengers with quality materials. The smooth flowing lines and seamless finish, the soft yet supportive seating and the thoughtful ergonomics will wrap you in style. The meters and dials are large and easy to read and even the tachometer takes on the silver accents you'll see throughout the cabin. Driving in a new Mirage sedan will always be a relaxing and enjoyable experience.

## OUTSTANDING AERODYNAMIC PERFORMANCE.

The new Mirage sedan is streamlined to slip through the air with absolute ease. And that means less noise, better fuel efficiency and improved handling stability. The weight-optimised body is one of the lightest in its class, and the ample use of high-tensile steel provides impressive strength and rigidity that contribute to safe, responsive handling.



## OUTSTANDING SAFETY LEVELS



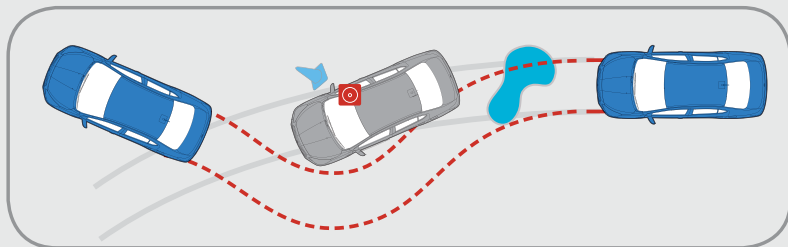
### DRIVER'S AND FRONT PASSENGER'S AIRBAG SYSTEM.

Safety is always a high priority in our cars. Mirage sedan has 6 SRS airbags as standard – side airbags for thorax protection, curtain airbags that drop from the ceiling and protect occupants from side collision and driver and front passenger SRS airbags in the event of a head on collision.

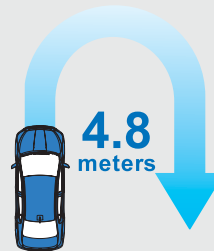
### ACTIVE STABILITY CONTROL (ASC)

ASC maintains stability and control when cornering by automatically recognising under-steer and over-steer. It applies brakes to the appropriate wheels to keep you online through corners.

## EBD

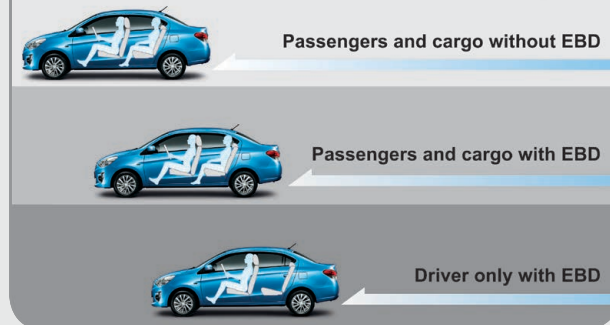


Electronic Brakeforce Distribution cleverly distributes braking force to all four wheels, enhance braking performance and giving the driver a feeling of surefooted control.



**MINIMUM TURNING RADIUS**  
The new Mirage sedan is easy to manoeuvre through narrow streets and crowded parking lots and boasts an extremely tight turning radius, one of the best in its class.

### Braking point



## ABS

In addition to EBD, the four-wheel Anti-lock Braking System helps prevent the wheels of this Mirage sedan from locking up during emergency braking, keeping you in control even on slippery roads.



### LARGE TRUNK.

There's no compromise on boot-space as well. The large, easy-to-load trunk will take a couple of sets of golf clubs, bike or other large items.

### STEERING WHEEL CONTROLS.

For your convenience, phone and audio controls are built into the steering wheel on all models. When a call comes through, the Bluetooth® system automatically cuts into the radio and when a paired Bluetooth® compatible phone is within the vehicle, it's automatically connected.



### POWER DOOR MIRROR.

Handy controls make it easy to achieve the right viewing angle.

### AMPLE STORAGE.

The Mirage sedan offers loads of convenient storage including front door pocket, centre cupholder, glove box tray and seat back pocket. The perfect place to keep personal items while you drive.



### 1.2 LITRE DOHC 12 VALVE MIVEC ENGINE

But don't be fooled by all this comfort, when you need acceleration, the new Mirage sedan responds with spirited torque and power all the while maintaining impressive fuel economy.



### INVECS III CVT

Optional in ES and standard in LS, the INVECS III (Intelligent & Innovative Vehicle Electronic Control System III) CVT maintains optimal rpm for high performance and fuel economy, smooths acceleration and deceleration, and efficiently selects gear ratios in all conditions.



### KEYLESS OPERATION

Locking or unlocking the doors or trunk is especially easy. Simply carry the keyless operation control in your bag or pocket and press the outer button on the driver's door or trunk.



### ONE TOUCH START SYSTEM

Mirage LS features a keyless operation system that allows you to start driving without ever taking the key from your pocket. To start or stop the engine, simply press the engine button.

# ES SEDAN



## ES SEDAN (KEY FEATURES)

### Mechanical

1.2L 3-cylinder DOHC MIVEC engine  
5 speed manual transmission  
Continuously Variable Transmission (CVT) with INVECS III Smart Logic (optional)  
Electric power steering

### Exterior

15" alloy wheels  
Body colour door handles  
Body colour door mirrors  
Body colour front and rear bumpers  
Front fog lamps with chrome bezel

### Interior

Carpet floor covering  
Cargo room trim  
Inner scuff plates

### Comfort

Air conditioning with air filter  
Driver foot rest  
Front and side window demister

### Convenience

Central door locking with keyless entry with 2 transmitters  
Rear door child proof locks  
Power windows front and rear (driver auto up and down)  
Variable intermittent wipers – front  
Sunvisors with vanity mirror with lid and ticket holder  
Room lamp with time delay  
Combination meter cluster  
LCD trip meter with fuel consumption and trip computer  
Tachometer

### Storage

Glovebox  
Instrument panel tray  
Front console with cup holder  
Front moulded door pockets  
Rear shelf

### Seating

Driver seat with manual slide, recline & height adjustment  
Passenger seat with manual slide and recline adjustment  
Passenger seat with convenience hook  
Height adjustable head rests

### Audio & Media

Electronic tune AM/FM radio, CD/MP3 Player  
4 speakers  
USB and AUX input  
Roof antenna  
Accessory socket in instrument panel  
Bluetooth® phone connectivity and audio streaming with voice control  
Steering wheel mounted phone and audio controls

### Safety

Side and curtain SRS airbags  
Driver and front passenger SRS airbags  
Anti-lock Braking System (ABS)  
Electronic Brakeforce Distribution (EBD)  
Brake Assist System  
Active Stability Control (ASC)  
3 point Emergency Locking Retractor (ELR) seatbelts  
Front seatbelts anchorage point  
Day/night rear view mirror  
2 x ISO-Fix rear seat child restraints  
3 x tether anchor rear seat child restraints  
Hill Start Control (HSC) CVT only

### Security

Immobiliser

# LS SEDAN



## LS SEDAN (FEATURES ADDITIONAL TO ES)

### Mechanical

Continuously Variable Transmission (CVT) with INVECS III Smart Logic

### Exterior

Privacy glass (side and rear)

### Interior

Leather steering wheel  
Chrome inner door handles  
Meter cluster with silver garnish  
Leather transmission gearshift knob  
High-grade seat fabric

### Comfort

Climate control air conditioning

### Convenience

Automatic dusk sensing headlamps  
Automatic rain sensing wipers  
Smart Key  
One Touch Start System



Bonnet Protector



Weathershields



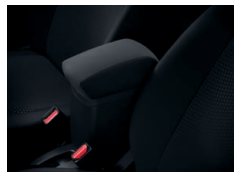
Headlamp Protector



Neoprene Seat Covers – Front



Daytime Running Lamps



Armrest & Storage



Ralliart Gear Shift Knob



Rear Sports Spoiler



B Pillar Decal



Meter Hood Garnish – Chrome



Chrome Exhaust Tip



Outer Scuff Plates – Front



Cargo Liner – Hard Plastic



Cargo Net



Cargo Organiser



Floor Illumination – Blue



Rear Bumper Protection Strip



Carpet Mats



Front Air Dam

Daytime Running Lamps

Side Air Dam

Weathershields

## PERSONALISE YOUR MIRAGE.

With all the style and substance of the Mirage Sedan is there even room for improvement? Of course there is. Genuine, purpose-built accessories will protect your new car and enhance your driving experience. A range of unique extras will also say "this Mirage is mine".

Mitsubishi Genuine Accessories undergo an extensive program of design, development and stringent testing to ensure they meet all applicable government standards as well as Mitsubishi's own rigorous engineering specifications and performance targets. Using Mitsubishi Genuine Accessories will ensure you get the best quality accessories that are as durable and reliable as the Mitsubishi you drive.

Pictures shown for illustration purpose and may not be product specific. Please check with your Mitsubishi dealer for specific model applications.

## COLOUR YOUR MIRAGE



WHITE (S)



COOL SILVER (S)



RED PLANET (M)



CYBER BLUE (M)

METALLIC (M) AND PEARLESCENT (P) PAINTS ARE OPTIONAL EXTRAS

## INTERIORS



ES SEDAN



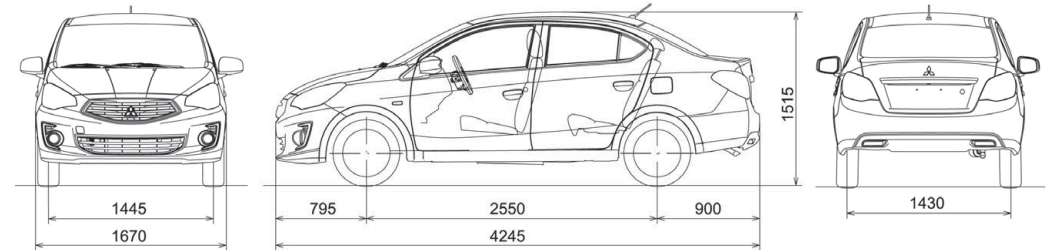
LS SEDAN

## KEY SPECIFICATIONS

	1.2L MIVEC petrol	
<b>Engine</b>		
Maximum power (kW)	57kW@6000rpm	
Maximum torque (Nm)	100Nm@4000rpm	
<b>Fuel Consumption<sup>1</sup> – ADR 81/02 (Litres per 100kms) combined</b>	<b>ES</b>	<b>LS</b>
Manual Transmission	4.9	-
Continuously Variable Transmission (CVT)	4.9	4.9
Fuel Tank Capacity (L)	42	42
<b>Kerb Mass (kg)</b>		
Manual Transmission	925	
Continuously Variable Transmission (CVT)	940	
<b>Dimensions</b>		
Turning Radius (m)	4.8	
Front Leg Room (mm)	1058	
Rear Leg Room (mm)	944	
Front Head Room (mm)	994	
Rear Head Room (mm)	942	
Cargo Capacity (L)	450	

1. These figures are obtained from controlled tests conducted by Mitsubishi Motors Australia to Australian Design Rule ADR81/02 and are provided to assist you in comparing the fuel consumption of Mirage sedan with other vehicles.

## EXTERIOR DIMENSIONS (MM)



# DIAMOND ADVANTAGE

†5 year or 100,000km New Vehicle Warranty (whichever comes first). Service conditions apply. \*4 years or 60,000km Capped Price Servicing (whichever occurs first). Covers all items specified under the standard "Maintenance for normal operating conditions" scheduled detailed in the service and warranty booklet. Additional service/repair items (if required) are at additional cost. ^1 year Roadside Assist (Service conditions apply). For purchases of new Mitsubishi vehicles after 1st October 2012, your initial 12 month roadside assist will be extended for a period of 12 months from the date of the most recent eligible Capped Price Service for that vehicle performed at an authorised Mitsubishi dealer. Roadside assist, if extended in accordance with these items, is available for a maximum of up to 5 years. Conditions apply. Offer subject to change without notice. Excludes Government, Rental and National Fleet customers.

Always consult your authorised Mitsubishi Dealer for the latest details on specifications, options, prices, availability and conditions on New Vehicle warranty. All product illustrations and specifications referred to herein are believed to be correct at the time of publication approval. Subject to any applicable Federal, State or Territory Laws or ordinances, which may apply from time to time, Mitsubishi Motors Australia Limited reserves the right, without notice, or obligation, to discontinue or make changes to designs, specifications, colours and materials of the options and products referred to herein at any time without incurring any liability to any purchaser thereof.  
© Mitsubishi Motors Australia Limited. ABN 53 007 870 395 MIT0446 MIRS0714

# LOVE THAT CAR