

# PREVÉ

Drive it to believe it



**5 YEARS\*\***  
FREE SCHEDULED  
SERVICING

**5 YEARS\*\***  
ROADSIDE  
ASSISTANCE

**5 YEARS\*\***  
WARRANTY

 **ANCAP**  
Safety ★★★★★



A Member of

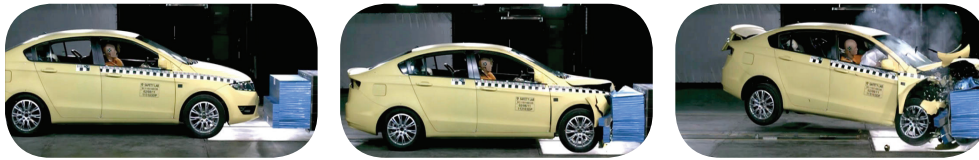
**DRB-HICOM**



### ERGONOMIC DESIGN

The cabin is designed for maximum comfort for the driver and passengers, with vanity mirrors, map lights, wide ergonomic seats and plenty of front and rear leg room, creating a feeling of lightness and elegance.

### Safety

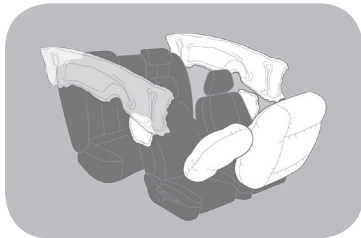
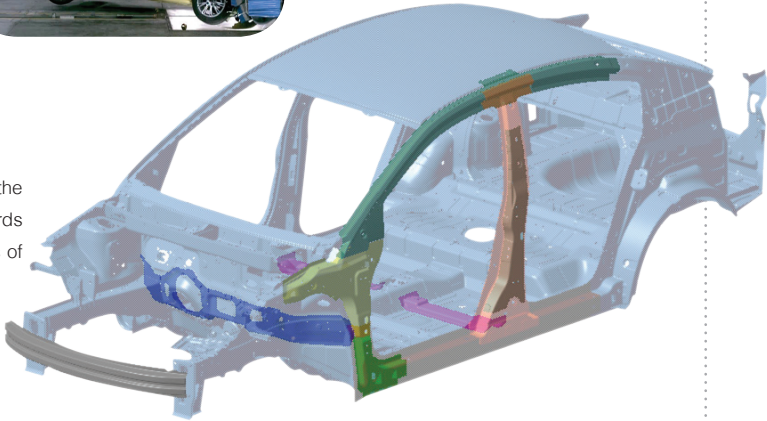


# safety



### REINFORCED SAFETY STRUCTURE

The RESS achieves better torsional rigidity yet retaining ideal weight, which adds to the Prevé's fuel efficiency. It is designed to comply with global automotive safety standards and offer maximum protection from front, side and rear impacts. Its frame consists of 12 key components forged using the hot press process for high-tensile strength.



### SIX SRS AIRBAGS

To complement the RESS, the Prevé has been fitted with 6 SRS airbags keeping you and your passengers safer during impact. Standard across the range the Prevé's dual front and side SRS airbags protect the driver and front passenger and the dual curtain SRS airbags further protects both the front and rear passengers.



### LED and FOLLOW ME HOME LIGHTS

The LED array blends style with functionality. Follow me home lights allows the headlights to be switched on for 30 seconds upon leaving the car.



## GX and GXR Features



# features

- 6 SRS Airbags – Front / Side / Curtain
- ESC (Electronic Stability Control)
- ABS (Anti-lock Braking System) with EBD
- Front Wheel Traction Control
- Front Active Head Rests
- Reverse Sensors
- Anti-trap Drivers Window
- Speed Sensing Auto Door Lock
- Impact Sensing Auto Door Unlock
- Quick Lane Change Indicator

- Bluetooth™ / iPod® Connectivity
- Radio CD / MP3 Player with AUX / USB Ports
- Steering Wheel Audio / Phone Controls
- Smart Information Display (SID)
- Remote Keyless Entry / Central Locking
- Remote Keyless Boot Release
- Fog Lights – Front / Rear



- Follow Me Home Lights
- 3 x Child Anchor Points
- 2 x ISOFIX Child Seat Mounting Points
- Pre-tensioner Seat Belts – Front
- Seat Belt Reminder – Front
- LED Indicators on Electric Side Mirrors
- 12V Interior Accessory Socket – Front / Rear
- 60/40 Split Fold Rear Seats

- Alarm System / Immobiliser
- Power Windows – Front / Rear
- Cup Holders – Front
- Variable Speed Intermittent Wipers
- Height Adjustable Steering Column
- Height Adjustable Drivers Seat
- Headlight / Key Reminder Buzzer

### Turbo GXR 7-Speed CVT

# GXR

- Turbo-charged Engine
- Cruise Control
- Push Button Engine Start
- 7-Speed CVT with Paddle Shifters
- Auto Climate Control A/C
- Leather Wrapped Steering Wheel
- Rear Spoiler
- Touch Screen Audio
- In Dash GPS Navigator
- Auto Rain Sensing Wipers
- Auto Headlights
- Electric Folding Side Mirrors
- Rear Cup Holders

“ The Prevé captures the breathtaking image of power and athleticism beautifully. ”

## GX and GXR Specifications

	GX 5 SPEED MANUAL	GX 6 SPEED CVT	TURBO GXR 7-SPEED CVT WITH PADDLE SHIFTERS
<b>POWERTRAIN</b>			
Engine	Campro IAFM+, 4-Cylinder, DOHC 16V MPI		CFE Turbo, Campro IAFM+, 4-Cylinder, DOHC 16V MPI
Bore / Stroke (mm)	76.0 x 88.0		76.0 x 86.0
Total Displacement (cc)	1,597		1,561
Compression Ratio	10.0:1		9.5:1
Maximum Power (kW @ rpm)	80 @ 5,750		103 @ 5,000
Maximum Torque (Nm @ rpm)	150 @ 4,000		205 @ 2,000 - 4,000
Fuel Tank Capacity (L)			50
Fuel Efficiency (L/100km) – Combined (ADR 81/02)	7.2	8.0	8.6
CO2 Emissions (g/km) – Combined (ADR 81/02)	171	191	206

<b>CHASSIS</b>			
Steering System	Hydraulic Power Steering		
Front Suspension	McPherson Strut with Stabiliser Bar		
Rear Suspension	Multilink with Stabiliser Bar		
Minimum Turning Radius (mtrs)	5.3		
Front Brakes / Rear Brakes	Ventilated Disc / Solid Disc		
Tyre Size	205 / 55 R16		
Wheel Size	16" Alloy		
Spare Tyre	Steel (Space Saver)		
Ground Clearance (mm)	155		

<b>DIMENSIONS AND WEIGHT</b>			
Overall L x W x H (mm)	4,543 x 1,786 x 1,524		
Wheelbase (mm)	2,650		
Track Front / Rear (mm)	1,542 / 1,542		
Overhang Front / Rear (mm)	910 / 980		
Kerb Weight (kg)	1,325	1,335	1,356
Luggage Space (L)	508		

## COLOURS



**PROTON'S QUALITY CARE**

- 5 Years or 75,000 Km FREE Scheduled Servicing
- 5 Years or 150,000 Km Factory Backed Warranty
- 5 Years or 150,000 Km 24 Hour Roadside Assistance
- 7 Years Anti-Corrosion Warranty
- 5 Star Maximum ANCAP Safety Rating



## AMPLE STORAGE SPACE

Multiple cup holders and large glove compartments. Complemented by handy hooks for hanging a handbag, jacket or a variety of other items, a storage compartment on each of the 4 doors, and numerous storage areas for anything else you can imagine.

(M) – Metallic Paint



Disclaimer: All information detailed in this brochure is correct at time of going to print. PROTON Cars Australia reserves the right to make changes to information detailed in this brochure without prior notice. Images are for display purposes only. Please contact your local PROTON dealer to ensure that the vehicle delivered is in accordance with your expectations. Colour availability may vary by state and model. \*\*5 years/150,000km warranty and roadside assistance, 5 years/75,000km free scheduled servicing (whichever occurs first). PROTON reserves the right to change or extend these offers. The Bluetooth™ word mark is owned by the Bluetooth SIG, Inc. iPod® is a registered trademark of Apple Inc. Not all devices will be compatible and functionality will vary depending on the devices.