

SIMPLY CLEVER

ŠKODA



ŠKODA Fabia



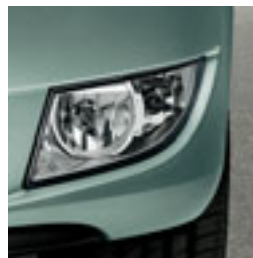




The ŠKODA Fabia **design** is a blend of elegance and functionality. The distinctive **front grille**, dominated by the ŠKODA logo, creates a feeling of dynamism and confidence.







The neatly shaped **front foglights** are standard on Fabia and are also available with **daytime running lights**.



The car may be equipped with an **alarm** with interior monitoring, a horn with back-up power and an inclination sensor.



Security isn't just a word when driving the ŠKODA Fabia. It's a feeling that accompanies you on every trip. Your driving **safety** is determined by a variety of factors. As a car manufacturer we are able to positively influence some of them and so of course haven't left anything to chance. In addition to the essential prerequisites of safety, such as the exceptionally **strong body** and **excellent driving characteristics**



The rear seat passengers' safety is enhanced by three **height-adjustable headrests**.



When manoeuvring the vehicle in a tight space, you will appreciate the optional **parking sensors**, which monitor the distance of the rear bumper from a potential barrier.

of the vehicle, we bring you a range of products for the protection of you and your passengers. Since the feeling of safety is an individual matter, you may select additional safety features that fit your specific requirements. In all Fabia models you are protected by six airbags: **driver and front passenger airbags, front side airbags and curtain airbags**.

The lower **glovebox** may be illuminated and, in combination with the optional **Climate control air conditioning**, cooled.



The **centre console drinks holder** is a welcome addition, especially for rear seat passengers, but is easily accessible from the front seats too. Other storage options are provided by the **pockets in the front seat backrests** and **storage bins in the rear door pockets**.



The **storage bins in both the driver and front passenger doors** provide a 1.5-litre bottle holder and a practical rubber band to hold a map or magazines.





Colours - Fabia



Candy White uni



Corrida Red uni



Pacific Blue uni



Sprint Yellow special



Brilliant Silver metallic



Cappuccino Beige metallic



Platin Grey metallic



Lava Blue metallic



Arctic Green metallic



Rallye Green metallic



Satin Grey metallic



Anthracite Grey metallic



Black Magic pearl effect

Colour combination examples - Fabia



Corrida Red uni
with white roof



Rallye Green metallic
with white roof



Lava Blue metallic
with roof and external
mirrors in silver



Black Magic pearl effect
with roof and external
mirrors in silver

Colour combinations - Fabia

Body colour	white roof	silver roof and external mirrors
Candy White uni		
Corrida Red uni	●	
Pacific Blue uni	●	●
Sprint Yellow special	●	
Brilliant Silver metallic		
Cappuccino Beige metallic		●
Platin Grey metallic	●	
Lava Blue metallic	●	●
Arctic Green metallic	●	
Rallye Green metallic	●	●
Satin Grey metallic	●	●
Anthracite Grey metallic	●	●
Black Magic pearl effect	●	●

Here we bring you a complete overview of external body paint colours for the Fabia vehicles. For more detailed information contact your authorised SKODA partner.



The **decorative door sill covers** enhance the attractiveness of the car and at the same time protect the sills against scratches.



To get a full overview of our range of accessories, ask any authorised ŠKODA partner for our special accessories catalogue.

Standard equipment - Fabia

Engine	77TSI 5MT
Safety and security	
Six airbags - dual front, front side and curtain airbags	●
ESC - Electronic Stability Control (incl. ABS, ASR, EBD and Brake Assist)	●
Height-adjustable three-point front seatbelts with pre-tensioners	●
Three-point seat belts rear	●
Driver seatbelt warning light	●
Remote central locking	●
Visible Vehicle Identification Number (VIN)	●
Design	
Leather package (three-spoke steering wheel, handbrake handle, gearlever handle)	●
Protective side running strips	●
Body coloured front and rear bumpers	●
Body coloured wing mirrors and door handles	●
Chrome Package (gearlever, gearlever frame, handbrake button, ventilation controls)	●
Comfort and convenience	
Air-conditioning	●
Pollen filter	●
Blues radio with CD and MP3 player and eight speakers	●
MP3 auxiliary input socket	●
Power windows front and rear	●
Three-spoke multi-function leather steering wheel (with radio and phone controls)	●
Bluetooth® phone connectivity	●
Height-adjustable halogen headlights	●
Front foglights	●
Multi-function trip computer (time, outside temperature, average and current fuel consumption, mileage, driving time, average speed, service interval display, distance to empty)	●
Cruise control	●
Electrically-adjustable and heated door mirrors	●
Lights on warning signal	●
Central console with 12V socket, bottle holder and storage box	●
Height-adjustable front armrest with storage compartment	●

● Standard

Standard equipment - Fabia (continued)

Engine	77TSI 5MT
Sun visors with vanity mirrors	●
Sunglasses storage	●
Ticket holder on A pillar	●
Height-adjustable driver seat	●
1.5L bottle holder in driver and passenger door pockets	●
Rear window wash/wipe	●
60/40 split/fold rear seats	●
Map pockets in back of front seats	●
Illuminated glovebox on passenger's side	●
Storage compartment in upper dashboard on passenger's side	●
Storage compartment on driver's side	●
Split/fold parcel shelf	●
Illuminated boot	●
Luggage restraining hooks in boot	●
Full-size spare wheel	●

Optional equipment - Fabia

Engine	
Metallic / pearl effect paint	○
Rear parking sensors	○
Swing radio - 2 DIN with CD, MP3	○
MDI - Mobile Device Interface (only with radio Swing)	○
Climate control air conditioning	○
Electric glass sunroof	○
Partial leather seats - leather/artificial, leather/fabric	○
Alarm system	○
Antares 15" alloy wheels	○

● Standard ○ Optional extra

Technical specifications - Fabia

Engine		77TSI 5MT
Engine type	Turbocharged petrol engine, OHC, transverse in front	
Cylinders/Displacement [cm ³]	4/1197	
Max. engine performance/revs [kW at rpm]	77/5000	
Max. torque/revs [Nm at rpm]	175/1500-3500	
Fuel quality	Unleaded petrol min. RON 95*	
Air pollution regulation	EU 5 [^]	
Performance/consumption		
Maximum speed [km/h]	191	
Acceleration 0-100 km/h [s]	10.1	
Consumption [ADR 81/02] [l/100 km]		
- combined	5.5	
- urban	7.0	
- extra urban	4.7	
CO ₂ emissions [g/km]	128	
Transmission		
Driven wheels	Front wheel drive	
Clutch	Hydraulic single dry clutch disc	
Transmission	Manual 5-speed, fully synchronised	
Weights		
Tare Mass [kg]	1,120	
Max. roof load [kg]	75	
Max. trailer load w/o brakes [kg]	500	
Max. trailer load with brakes [kg]	1,000	
Max. downball weight [kg]	50	

* Using low-octane fuel may affect engine performance.

[^] Emission level according to European Regulation (EC) No. 715/2007 and Regulation (EC) No. 692/2008.

Technical specifications - Fabia (continued)

Engine		77TSI 5MT
Body		
Body	5 door, 2 compartment, 5 seater	
Drag coefficient c_d	0.33	
Chassis		
Front axle	MacPherson suspension with lower triangular links and torsion stabiliser	
Rear axle	Compound link crank-axle	
Braking system	Hydraulic dual-diagonal circuit braking system vacuum assisted	
Brake - front	Vented disc brakes with floating caliper	
Brake - rear	Disc brakes	
Steering system	Direct rack and pinion steering with electro-hydraulic power steering	
Wheels	6x15"	
Tyres	195/55 R15	
Liquids		
Tank capacity [l]	45	

Technical dimensions - Fabia

Engine	77TSI 5MT
Outside dimensions	
Length [mm]	4000
Width [mm]	1642
Height [mm]	1498
Wheelbase [mm]	2465
Ground clearance [mm]	134
Track front/rear [mm]	1417/1410
Inside dimensions	
Interior width (front/rear) [mm]	1380/1384
Headroom in front/rear [mm]	989/994
Storage capacity	
- depending on the seats position [l]	315
- with rear seats folded down [l]	1180



Fabia Monte Carlo

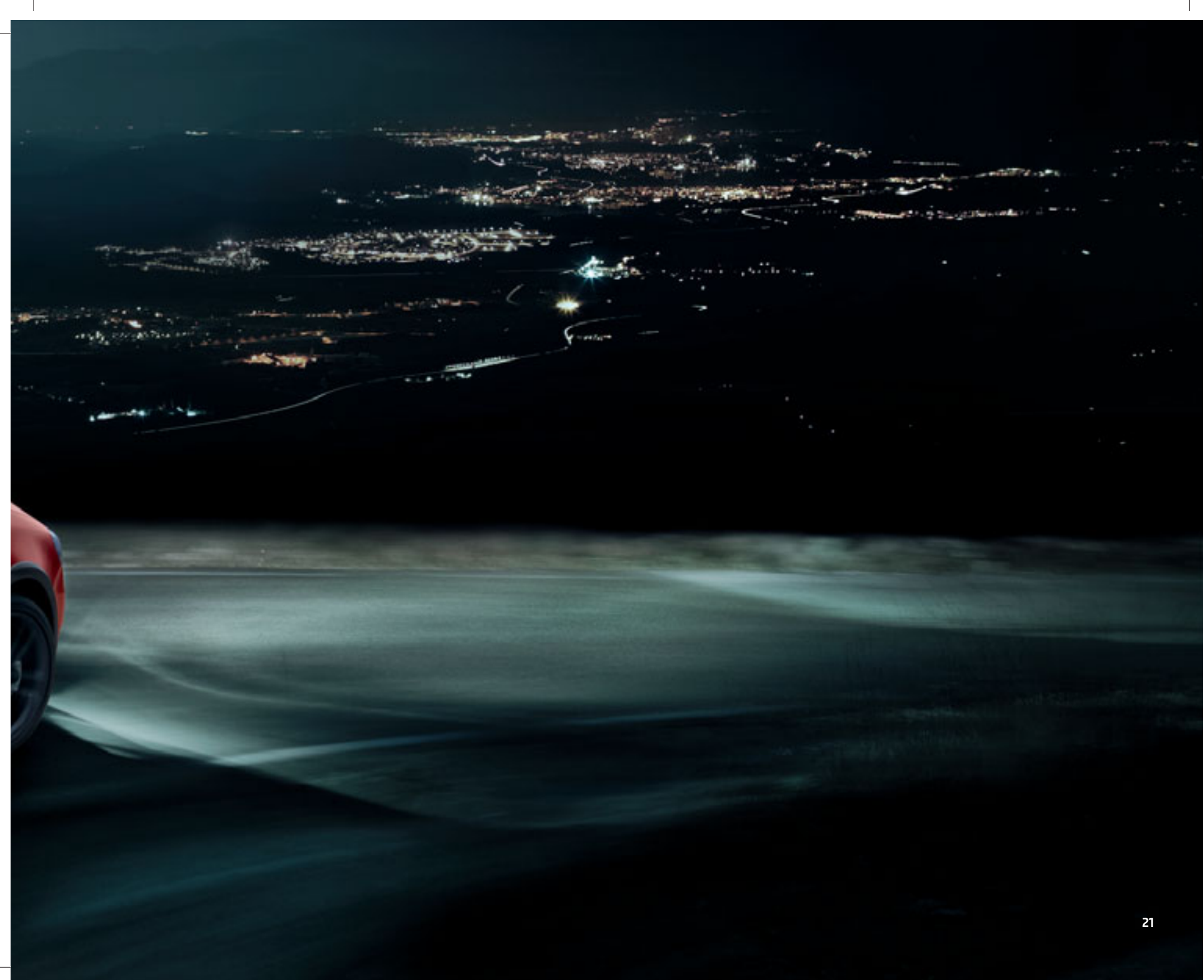




Imagine a sun-flooded coastline or soiled mudguards and thundering engines. A peaceful rest in the shade of a majestic cathedral or an adrenaline-filled spectacle. A stroll through ancient streets or a drive on icy asphalt throbbing with the quick pulse of racers. Welcome to Monte Carlo. Where azure skies as well as wide black racing tyres define the legendary Monte Carlo, where the battle for one of the oldest and most famous rallies is fought.

The ŠKODA Fabia Monte Carlo leaves no doubt which hue of Monte Carlo it is painted in. The car confidently parades its sporty style and love for racing contests. But just like the city, there is another side to it. Its untamed expression is complemented by excellent driving characteristics, which together with the economical TSI engine bring you immense driving pleasure.







The original **design** of the ŠKODA Fabia Monte Carlo is based on a simple yet distinct solution. Some exterior details are in an innovative **black** design, which gives the car a unique style and a ferocious expression. The main **headlights** as well as the **front foglights with daytime running lights**, the vertical ribs of the **front grille**, including the frame, and the external **rear-view mirrors** all have a black tint.



The **roof** and **spoiler** are also in black, no matter which body colour you decide to go for. Other specific features of the Fabia Monte Carlo model include **black plastic guards** with a glossy finish, lining the lower part of the vehicle, and a sports chassis. To further enhance the overall impression as well as the passengers' comfort, the car is equipped with **privacy glass**.



The **front door sill strips**, with Monte Carlo inscription, have both decorative and protective functions.



The distinct style is underlined by 6.5J x 16" **Comet black polished alloy wheels**.



You can choose between two colour designs of the interior. If you decide for the **red interior**, the upholstery of the front sports seats will be in combination red with black backrest sides. The **black interior**, which comes as standard, features front sports seats in grey/black combination.



The **3-spoke steering wheel** in black perforated leather is decorated with red stitching.



The **gearstick and sleeve of the manual transmission** come in black leather with red stitching as standard.



The stylish sports interior is complemented by **alloy sports pedals**.



The **handbrake handle** is another leather element featuring characteristic red stitching.

Colours - Fabia Monte Carlo



Candy White uni



Sprint Yellow



Corrida Red uni



Brilliant Silver metallic



Cappuccino Beige metallic



Anthracite Grey metallic



Black Magic pearl effect



Standard equipment - Fabia Monte Carlo (in addition to Fabia 77TSI)

Engine	77TSI 5MT
Monte Carlo design pack (incl. headlight and foglight surround, grille, wing mirrors, roof and spoiler all in black)	●
Privacy glass from B pillar back	●
Comet 16" black alloy wheels	●
Front door sill strips with Monte Carlo inscription	●
Three-spoke sports steering wheel	●
Alloy sports pedals	●
Front sports seats - grey/black combination	●
Front sports seats - red/black combination	○

Optional equipment - Fabia Monte Carlo

Engine	77TSI 5MT
Metallic / pearl effect paint	○
Rear parking sensors	○
Swing radio - 2 DIN with CD, MP3	○
MDI - Mobile Device interface (only with radio Swing)	○
Climate control air conditioning	○
Electric glass sunroof	○
Alarm system	○

● Standard ○ Optional extra

Technical specifications - Fabia Monte Carlo

Engine	
Engine	77TSI 5MT
Engine Type	Turbocharged petrol engine, high-pressure direct injection system
Cylinders	4
Cubic capacity (cc)	1,197
Max. performance/Revs (kW/min ⁻¹)	77/5,000
Max. torque/Revs (Nm/min ⁻¹)	175/1500-3500
Air pollution regulation	EU5 [^]
Fuel	Unleaded petrol min RON 95*
Performance	
Maximum speed (km/h)	191
Acceleration 0-100 km/h (s)	10.1
Fuel consumption 99/100	
- urban (l/100 km)	5.5
- extra-urban (l/100 km)	7.0
- combined (l/100 km)	4.7
CO ₂ emissions (g/km)	128
Transmission	
Type	Front-wheel drive
Clutch	Hydraulic single dry clutch disc
Transmission	Manual 5-speed, fully synchronised
Weight	
Tare Mass [kg]	1120
Max. roof load [kg]	75
Max. trailer load w/o brakes [kg]	500
Max. trailer load with brakes [kg]	1000
Max. downball weight [kg]	50
Body	
Body	5 door, two compartment, 5 seater
Drag coefficient c _d	0.33

* Using low-octane fuel may affect engine performance.

[^] Emission level according to European Regulation (EC) No. 715/2007 and Regulation (EC) No. 692/2008.

Technical specifications - Fabia Monte Carlo (continued)

Engine		77TSI 5MT
Chassis		
Front axle	MacPherson suspension with lower triangular links and torsion stabiliser	
Rear axle	Compound link crank-axle	
Braking system	Hydraulic dual-diagonal circuit braking system vacuum assisted	
Brake - front	Vented disc brakes with single/piston floating caliper	
Brake - rear	Disc brakes	
Steering system	Direct rack and pinion steering with electro-hydraulic power steering	
Wheels	6.5Jx16"	
Tyres	205/45 R16	
Liquids		
Tank capacity [l]	45	
Outside dimensions		
Length [mm]	4000	
Width [mm]	1642	
Height [mm]	1498	
Wheelbase [mm]	2465	
Ground clearance [mm]	134	
Track front/rear [mm]	1417/1410	
Inside dimensions		
Interior width (front/rear) [mm]	1380/1384	
Headroom in front/rear [mm]	989/994	
Storage capacity		
- depending on the seats position [l]	315	
- with rear seats folded down [l]	1180	

General information

OWNING A ŠKODA

ŠKODA New Vehicle Warranty

Every new ŠKODA passenger vehicle is covered by a three-year unlimited kilometre manufacturer's warranty, which includes ŠKODA Assist (24-hour roadside assistance). Every new ŠKODA vehicle is also covered by a three-year paintwork and 12-year anti-corrosion perforation warranty.

ŠKODA Assist – 24-Hour roadside assistance

As a valued customer, you can be assured that wherever you travel within Australia, you will have access to roadside assistance, 24 hours a day, 365 days a year. This is complimentary for the duration of the vehicle's original ŠKODA warranty period. You will receive help in the event of a breakdown or accident and, if required, your vehicle will be mobilised or transported to an Authorised ŠKODA Workshop. As a ŠKODA owner you will also have access to the additional benefits of accommodation and car rental if your vehicle cannot be mobilised within 24 hours, when you are over 100km away from home.

ŠKODA Extended Warranty

To give you added peace of mind and the assurance of added security, you have the option to extend the factory warranty to suit your ownership cycle. If your ŠKODA was purchased new by you, we can offer you a 36 month/60,000km extension on your already existing ŠKODA manufacturer's warranty. Alternatively, if your vehicle is already outside the ŠKODA manufacturer's warranty period we can also offer you an extension of your factory warranty. Have the assurance that your ŠKODA remains a ŠKODA. For further information regarding warranty and extending your vehicle's factory warranty, please consult your local ŠKODA dealer, refer to your owner's handbook or visit www.skoda.com.au

ŠKODA Service

Your Authorised ŠKODA Service Centre is part of ŠKODA's global Quality Management System, ensuring all dealers are certified to ISO 9001:2000 – an internationally recognised Quality Standard. Authorised ŠKODA Service Centres have factory trained Technicians equipped with the very latest diagnostic equipment, specialist tooling and ŠKODA Genuine Parts®. An Authorised ŠKODA Service Centre undertakes work in accordance with factory specified guidelines and maintenance schedules.

ŠKODA Genuine Parts®

ŠKODA Genuine Parts® are designed for your vehicle and approved by ŠKODA, with particular regard to safety. The workmanship, dimensional accuracy and materials used in these parts comply with factory specifications. To ensure safety and reliability, ŠKODA recommends the use of ŠKODA Genuine Parts®. ŠKODA Authorised Dealers offer a two-year unlimited kilometre warranty on Genuine Parts from the date of purchase.

ŠKODA Finance*

Buying, borrowing or leasing, ŠKODA Finance will certainly make you think differently about financing and insuring your new ŠKODA. Committed to meeting the needs of ŠKODA drivers across Australia, we offer a range of leasing, financing and insurance products, each with distinct advantages depending on your specific circumstances. Our packages are personalised to suit your individual requirements. You design your plan so that it meets your budgeting needs and rest assured that there will be no surprises along the way. Speak to your local participating Authorised ŠKODA Dealer today to put together a financial solution that best suits your lifestyle.

GLOSSARY

Anti-lock Braking System (ABS)

When braking, sensors in each wheel measure the road speed. If one or more wheels start to lock, the ABS reduces brake pressure to those wheels. This prevents the wheels from locking during heavy or emergency braking and allows you to continue to steer the vehicle.

Anti-Slip Regulation (ASR)

ASR is a switchable traction control system that prevents the front wheels from spinning under acceleration. When a difference in driving wheel speed is detected (e.g. due to differences in road surfaces), the system automatically reduces engine torque accordingly.

Electronic Stability Control (ESC)

The ESC is made up of the ABS and ASR traction control systems. Simply put, it helps ensure that the vehicle goes where you steer it – even in extreme driving conditions. By constantly comparing the actual movement of the vehicle with pre-determined values, ESC will apply the brakes to individual wheels and automatically adjust the engine's power output to correct a problem the very moment it arises.

Brake Assist

Brake Assist aids the driver during emergency braking by automatically increasing the brake pressure to a level exceeding the locking limit. Then, the ABS is quickly brought into the operating range, thereby enabling maximum vehicle deceleration.

Electronic Brake-pressure Distribution (EBD)

This sophisticated system provides an electronic means of regulating the ratio of front to rear brake pressure. The system automatically varies the settings according to driving and load conditions to ensure each wheel is braked to the optimum extent.

* ŠKODA Finance, a trading name of Volkswagen Financial Services Australia Pty Ltd ABN 20 097 071 460

One of the most important goals of ŠKODA is the development and production of products that are as environmentally friendly as possible throughout their life cycle phases, placing principal emphasis on the selection of recyclable materials. Our ŠKODA cars are manufactured using progressive types of technology in modern production facilities that meet the strictest criteria. Anticorrosive protection of the cars' painted parts is based exclusively on lead-free cataphoresis (KTL) and water-soluble paints.

Our company strategy includes limiting fuel consumption and emissions. As a result, the engines of ŠKODA meet the current emission regulations. We also offer diesel engines with Diesel Particulate Filters (DPF). All products made by ŠKODA adhere to the laws and regulations concerning the protection of soil and water. As a result of these activities, ŠKODA cars meet technical, safety, quality and environmental requirements. ŠKODA contributes to the preservation of a clean environment and provides mobility and comfort to its customers.

The environmental logo expresses ŠKODA's awareness of responsibility for, and attempts at, the sustainable development of the company and a friendly approach to life and nature. For more information please visit www.skoda.com.au



ŠKODA is distributed by Volkswagen Group Australia Pty Limited trading as ŠKODA Australia, The Lakes Business Park, 6 Lord Street, Botany, NSW 2019. ABN 14 093 117 876. Specifications are as planned at June 2011, for Model Year 2012 and are subject to change without notice or obligation. Cars and accessories shown may not depict Australian specifications. Fuel consumption figures according to Australian Design Rules (ADR) 81/02. All ŠKODA approved parts and accessories are warranted for 2 years/unlimited kilometres. All information in this brochure is correct at the time of publication, however variations may occur from time to time and ŠKODA, in so far as it is permitted by law to do so, shall not be liable in any way as a result of any reliance by any person on anything contained in this brochure. The colours shown in this brochure are indicative only and may vary from actual items owing to the printing process. Authorised ŠKODA Dealers will provide up-to-date information on model application, design feature, prices and availability on request.

Insurance products are provided by Allianz Australia Insurance Limited (Allianz), AFS Licence No. 234708, ABN 15 000 122 580. In arranging this insurance Volkswagen Financial Services Australia Limited, ABN 20 097 071 460 and the authorised dealers act as agents of Allianz and not as your agent. ŠKODA Finance is a trading name of ŠKODA Financial Services Australia Limited. Locked Bag 5009, Alexandria NSW 2015. Tel: 02 9695 6311.

Publication date: September 2011

www.skoda.com.au

Your ŠKODA partner:



SKO700B