

SIMPLY CLEVER

ŠKODA



ŠKODA OCTAVIA & OCTAVIA RS



European Value without the European Price Tag

The **ŠKODA Octavia** is more spacious and luxurious than ever. Sharing the very latest in Volkswagen Group's technological advancements and ingenuity, the new Octavia assures quality, reliability and value.

The new design is both elegant and modern, showcasing ŠKODA's new innovative design language.

With a whole new range of Driver Assist Technologies, the new Octavia makes driving more comfortable, enjoyable and, most importantly, safer.



ŠKODA Octavia



INTERIOR

- High Quality Premium Seats
- Innovative Storage
- Multifunctional Steering Wheel

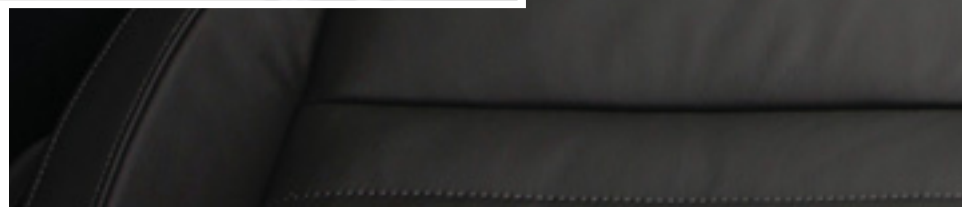
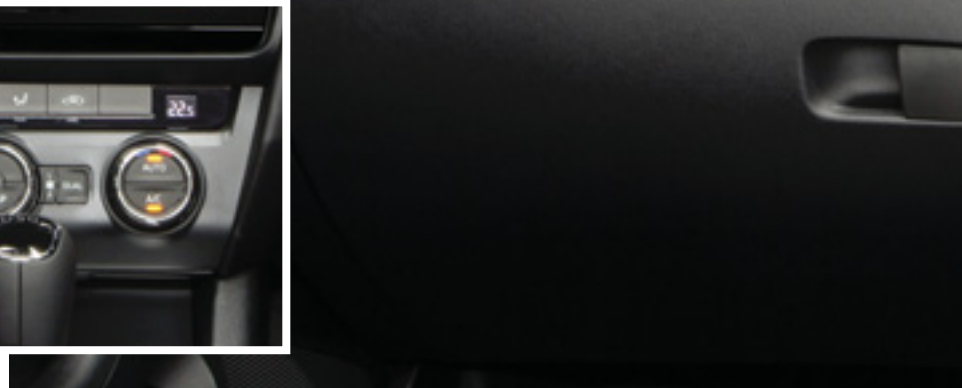
Octavia's **high quality interior** and ergonomic design will let you focus on the drive and enjoy the journey.

Depending on trim, your Octavia will either be equipped with air-conditioning or **dual-zone air-conditioning with humidity control**. Dual-zone allows the driver and front seat passenger to set different temperatures for optimal comfort while the humidity sensor directs air flow as required, to keep the windscreen fog free.



The car stereo, Columbus Navigation System and trip computer are housed in one system that gives the driver access to the vehicle setup and comfort functions through a single device. The proximity sensor recognises when a hand is moving towards the touchscreen and brings up the function buttons ready to be used, while intuitive swiping and pinching movements allow the user to scroll menus and zoom into maps easily.

Columbus Navigation System also features **SmartLink** - delivering a seamless connection between car and smartphone using **Apple CarPlay®** and **Android Auto™** interfaces. Smartlink enables you to control compatible apps from the infotainment display, whether it be listening to music on the smartphone connected or receive turn-by-turn directions; all of this is mirrored on Columbus display.





Style Trim Shown

SPACE

- More Leg Room
- Exceptional Luggage Space
- Clever Storage Solutions
- Longer Wheelbase

As ŠKODA drivers have come to expect, Octavia is full of "Simply Clever" storage areas and designs to offer solutions that fit your lifestyle.



With a longer wheelbase than the previous generation, rear passenger space has been further maximised, ensuring three adults can sit comfortably in the rear – a perfect environment for growing families. All rear passenger seats are fitted with ISOFIX fixtures as standard on all models.

A 1.5L bottle holder and a removable rubbish bin are "Simply Clever" features located on the door panel.



The tinted **Electric Sunroof*** for the Sedan allows for greater freedom and space.

*Optional on all models



The **two-part panoramic sunroof*** for the Wagon also features an electrically-adjustable sun blind cover.



The **multimedia holder** located in the centre console is not only a practical accessory but also a safe place for storing your iPod and mobile phone.



Overseas model shown, Style Wagon

Hidden within Octavia's sleek design is exceptional **luggage space**. The sedan boasts **568 litres** of space, all easily accessible through the large sedan boot opening. This phenomenal space becomes cavernous with the rear seats folded down, expanding to **1558 litres**. The wagon offers **588 litres** of space with seats up and **1718 litres** with seats down.

Further Simply Clever features on the wagon version include the automatic tailgate*. For convenience, the boot can be controlled from four separate locations:

- via remote control
- from the centre console
- with an internal button on the boot
- and via an external soft-touch boot button.

*Optional Extra on wagon

EXTERIOR

- Bi-Xenon Headlights
- Adaptive Front Light System
- Cornering Fog Lights
- Timeless, European Design



Style model with optional Tech Pack shown

With strong lines and sharp angles, the Octavia's design promises to remain timeless and elegant in years to come. Whilst the broad fascia brings a strong road presence, the streamlined side profile hides the cavernous space within.

Proudly wearing ŠKODA's black and chrome logo, the interplay of light and darkness continues throughout the exterior of the car. The strong, dynamic shoulder line is complemented by the unique flourish at the base of the window line; creating the shape of an aeroplane tail fin on the sedan hinting towards the advanced technology found inside.

The Octavia utilises the very latest in Volkswagen Group shared technology - the Modular Transverse Matrix (MQB). This initiative allows cars to be designed with a high degree of freedom, by using various structural modules not limited by class or body type.



The **Integrated headlight washers*** ensure headlights are clean so visibility is maximised.

*Available in the Tech Pack for Ambition Plus and Style



Activated upon unlocking and opening the door, the **Environment lights**† illuminate to help you see surroundings more clearly such as puddles.

Clear halogen headlights and broad fog lights can be upgraded to **Bi-Xenon Headlights with AFS* (Adaptive Front Light System)** and **LED daytime running lights***

*Available in the Tech Pack for Ambition Plus and Style. †Standard on Style; included in optional Comfort Pack for RS.

ENGINES

- 110TSI Petrol Engine
- 110TDI Diesel Engine



The Octavia presents lighter, more fuel-efficient engines including Volkswagen Group's new turbocharged **1.4 litre 110TSI engine**; delivering an impressive 250Nm of torque and a combined fuel economy of **5.2L/100km*** (110TSI 7-speed DSG Wagon). That's up to 20% more fuel-efficient than the previous generation Octavia.

In addition to the 110TSI, a **110TDI diesel engine** is offered on the Style. The turbo-diesel 110TDI offers a strong 320Nm from a 2.0 litre engine, while remaining fuel efficient at a combined **4.7/100km*** (110TDI 6-speed DSG Wagon).

A standard feature across both engine variants is Green Tech[^] – a technology allowing for further improvement in fuel economy through the "Start Stop" and Brake Energy Recuperation features.



*Combined figure as per ADR 81/02.

[^]Reactivation of "Start Stop" will not occur in certain conditions.

INFOTAINMENT

- SmartLink Smartphone Connectivity
- Sound Systems
- Columbus Navigation System
- USB Connection
- Proximity Sensor
- Trip Computers

The all-new infotainment systems on the Octavia are a significant step forward in the field of multimedia systems. All Octavias come with a USB, SD card and aux-in socket as standard so you can play music from your mp3 player through the car's speakers. The USB will allow you to control the device through the car's touchscreen system, as well as, charge your device simultaneously.



Touch screen 5" Swing Radio



Touch screen 6.5" Bolero Radio



Touch screen 8" Columbus Satellite Navigation



For those who love their music, the 8-speaker sound system on the Ambition Plus and Style can be upgraded to a premium, German **10-speaker Canton Sound System***. Canton also adds a digital equaliser; sound level controls allowing optimisation for all or individual occupants; vehicle noise cancellation and, when added in combination with a Columbus satellite navigation, the ability to play Dolby 5.1 surround sound.

*Available in the Tech Pack for Ambition Plus, Style and RS

DRIVER ASSIST SYSTEMS

- Driving Mode Selection
- Advanced Keyless Entry Including Smart Start (KESSY)
- Automatic Parking Assist
- Rear View Camera



Driving Mode Selection[^] allows the driver to adapt the car's behaviour to their preference or needs. Four driving modes are available: Normal, Sport, Eco and Individual (Individual allowing the driver to configure their own settings). The car will then adapt the engine torque, accelerator sensitivity, power steering, headlight control (where AFS is fitted), DSG transmission, and air conditioning to suit the profile selected.



Advanced Keyless Entry Including Smart Start^{*} can be added to allow the driver to lock and unlock the car and start and stop the engine without having to insert or even handle the key. As long as the key is within 1.5m of the sensor, the system will work, and a number of simply clever features ensure you can check the lock, preventing you from locking the key inside and preventing unwanted access.



The Rear View Camera^{†#} gives a clear view of objects usually out of sight allowing the driver to manoeuvre with added confidence and safety. When in reverse the navigation display system reveals a real-time image display with superimposed graphic lines thanks to the camera built into the tailgate.

For those wishing to make both parallel parking and bay parking easier than ever, an **Automatic Parking Assist**^{**} can be added. With a press of a button, the system will begin searching for a parking space in a line of cars or other obstacles. When a suitable space is found (the car's length + 60cm is all the space needed), the car will steer itself into the space whilst the driver controls the pedals. This system will now also steer the car out of a line of cars from its parking space and with two presses of the same button, the car will search for and manoeuvre into a bay parking space.

[^] Available in Tech Pack for Ambition Plus and Style ^{*} Available in the Tech Pack for Ambition Plus, Style and RS [†] Available in Travel Pack for Ambition. Standard in Ambition Plus, Style and RS.
^{**} Safety technologies are not a substitute for the driver's responsibility for the vehicle.



SAFETY

- Passenger Protect Assist
- Multi-Collision Brake
- Prefilled Braking System
- Rear View Camera
- Fatigue Detection
- Adaptive Cruise Control including Front Assist

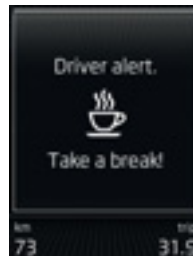


The Ambition Octavia features **seven airbags** as standard, located at the front, front side, curtain and driver's knee area. With the inclusion of rear side airbags, the Ambition Plus, Style and RS models boast **nine airbags** as standard.

The **Multi-collision Brake** feature has been designed to provide effective assistance for the driver in the moments after an accident. Multi-collision Brake triggers automatic controlled braking once an initial collision has been detected so as to reduce the intensity of further accidents after a collision and can help prevent follow-on collisions with oncoming traffic.



Fatigue Detection ^ monitors the movement of the driver through the steering wheel and if the driver begins to display signs of fatigue, the car will audibly alert the driver with a tone and show a break recommendation alert on the Maxi DOT.



Adaptive Cruise Control (ACC) * is an extension of the conventional cruise control system with advanced capabilities based on a radar sensor located on the front grille. When ACC is activated, the vehicle automatically brakes and accelerates to a speed and distance set by the driver. The dynamics of the ACC system can be individually varied by selecting one of the driving programs from the Driving Mode Selection.

Utilising the same radar sensor, the **Front Assist** * safety system monitors the area in front of the car and evaluates the distance, direction and speed of all nearby objects. Using predefined algorithms, it decides whether these objects pose a potential risk of collision and alerts the driver if the distance to object is insufficient - initially with a tone and an alert on the Maxi DOT display; followed by a warning jolt of the brakes. If the driver doesn't respond, the car will brake itself - all the way to a standstill if needed, helping to avoid a collision or reduce the severity of the accident. It can be turned off by the driver via the touchscreen.



Passenger Protect Assist ^ uses information from the car's braking and electronic systems to recognise when there is a high chance of collision. If this is detected, the front seat belts will tighten and the sunroof (if equipped) and windows will close to help keep the car's occupants in the optimum position for airbag deployment and reduce items flying into the car. Drivers who prefer to desensitise the Passenger Protect Assist can change these settings on their touchscreen display.

ŠKODA Octavia Ambition



The **Ambition** version is offered with black fabric seat upholstery with matching coloured door panelling and dashboard. The interior is fitted with streamline grey finishes. The 5" touch screen Swing infotainment system is a standard feature on the Ambition.

ŠKODA Octavia Ambition Plus



The **Ambition Plus** version is offered with black fabric seat upholstery with matching coloured door panelling and dashboard. The interior is fitted with streamline grey finishes. The 6.5" touch screen Bolero infotainment system is a standard feature on the Ambition Plus.

ŠKODA Octavia Style



The **Style** version is offered with black leather appointed seat upholstery*. 8" touchscreen Columbus Satellite Navigation and Dual-zone Climatronic Air-conditioning are standard features on the Style.

*Leather appointed seat upholstery have a combination of genuine and artificial leather, but are not wholly leather.

ŠKODA Octavia colours



Candy White



Corrida Red



Moon White metallic



Race Blue metallic



Quartz Grey metallic



Cappuccino metallic



Black Magic pearl effect



Brilliant Silver metallic

Ambition



6.5J x 16" steel wheels for 205/55 R16 tyres with **Tecton** hub covers

Ambition Plus



7.0J x 17" **Denom** alloy wheels for 225/45 R17 tyres

Style



7.5J x 18" **Golus** alloy wheels for 225/40 R18 tyres

Optional for Ambition Plus and Style

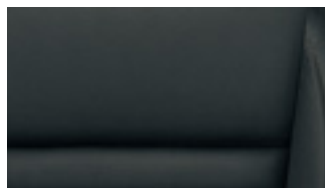


7.5J x 18" **Alaris** alloy wheels for 225/40 R18 tyres

Interiors are available with any exterior paint option



Ambition and Ambition Plus interior
black fabric



Style interior
black leather appointed*

Please note that Metallic and Pearl Effect Paint are optional at extra cost. The print process does not allow for exact reproduction of the exterior or the upholstery colours. Please contact your authorised SKODA dealer for further information on colours and upholstery combinations. Overseas models are shown for illustrative purposes only.

*Leather appointed seat upholstery have a combination of genuine and artificial leather, but are not wholly leather.

ŠKODA Octavia RS



Vehicles shown with optional Tech Pack. RS Wagon shown with optional Black Pack



The **ŠKODA Octavia RS** uniquely combines a dynamic driving experience with all the characteristics of a practical family vehicle.

As with every Octavia, the RS will captivate you with its modern design. But its sleek looks are backed up with a sporty chassis and engine options to match. The 162kW turbocharged petrol engine and 135kW turbocharged diesel engine give the RS highly agile characteristics, yet result in lower fuel consumption without compromising overall performance. Both engines are available with Green Tech (Start-stop and Brake Energy Recuperation). As a result, a combined consumption of 6.4L/100km* for the 162TSI 6-speed Manual Sedan and 4.8L/100km* for the 135TDI 6-speed DSG Sedan are achieved.

Like the Octavia Style, safety is paramount for the RS with nine airbags, fatigue detection, rear view camera[^] and passenger protect assist as standard.

The Octavia RS will fit your active lifestyle perfectly, and you won't need to forgo the everyday practicalities of life. Why park your dream of a sports car and settle for a family vehicle instead? The ŠKODA Octavia RS fits both roles perfectly.

*Figures according to ADR 81/02 (l/100km).



[^]Safety technologies are not a substitute for the driver's responsibility for the vehicle.



The Octavia RS can be easily identified by the **RS Badge** on the front grille as well as the sports expression enhanced by the **Bi-Xenon headlights with LED daytime running lights and black backfill**.



The **RS logo** on the rear forms another distinctive detail of this sports model. Both the Sedan and Wagon feature a rear sports **Spoiler**, which increases the stability of the vehicle at faster speeds. Further enhancing the sporting pedigree of the RS are the **Dual integrated chrome exhaust tailpipes** and **Black rear Diffuser**.

Vehicles shown with optional Teck Pack and 18" Black Pack



Vehicle shown with optional Tech Pack and 19" Black Pack



The **3-spoke multifunctional sports steering wheel** wrapped in perforated leather is adorned with an original **RS plaque**. The exceptional design goes hand in hand with advanced technology, represented by the **electromechanical, progressive power steering**. Based on the steering wheel position, the progressive steering reduces the need to move your hands around the wheel when cornering and increases comfort when parking. Furthermore, the **Extended Electronic Differential Lock system (XDL)** improves traction and reduces the tendency to understeer. Both these features are exclusive to the RS model.



The instrument panel in **RS design** has a clear white interface, equipped with the **high-resolution display**.

Unique to the RS, the **Door Sill Strips** accentuate the sporty character of the model, whilst adding to practicality.



The **Aluminium finish pedals** are yet another stylish addition of the RS design.



Along with the steering wheel, the **Sports leather package** is evident on the handbrake and gear lever, complemented with red stitching.

VRS
MODE

Standard on all RS models, the **Driving Mode Selection** adds a sporty note to proceedings. It is modifiable in accordance with the selected engine mode (normal/sport/eco/individual), enhancing the driving soundtrack, providing a full-throated response to every rev, gear and throttle blip.

ŠKODA Octavia RS



The **RS** version is offered with a combination of black Leather appointed and fabric seat upholstery. The RS is also available with optional black Leather appointed upholstery*. 8" touchscreen Columbus Satellite Navigation and Dual-zone Climatronic Air-conditioning are standard features on the RS.

*Leather appointed seat upholstery have a combination of genuine and artificial leather, but are not wholly leather.

ŠKODA Octavia RS colours



Candy White



Corrida Red



Brilliant Silver metallic



Black Magic pearl effect



Race Blue metallic



Moon White metallic



Steel Grey uni*



Quartz Grey metallic

RS



7.5J x 18" **Pictoris** alloy wheels for 225/40 R18 tyres

RS[^]



7.5J x 18" **Gemini Anthracite** alloy wheels for 225/40R18 tyres

RS[†]



7.5J x 19" **Xtreme** alloy wheels for 225/35 R19 tyres in anthracite design

Black Pack recommended for Corrida Red and Steel Grey colours.

[^] Available in 18" Black Pack

[†] Available in 19" Black Pack



RS interior
black fabric/leather appointed*



Optional interior for RS
leather appointed*

Please note that Metallic and Pearl Effect Paint are optional at extra cost. The print process does not allow for exact reproduction of the exterior or the upholstery colours. Please contact your authorised ŠKODA dealer for further information on colours and upholstery combinations. Overseas models are shown for illustrative purposes only.

*Leather appointed seat upholstery have a combination of genuine and artificial leather, but are not wholly leather.



Vehicle shown with optional Tech Pack and 18" Black Pack

Model equipment

Safety and Security	Ambition	Ambition Plus	Style	RS
Electronic Stability Control (ESC) (incl. Hill Hold Control)	●	●	●	●
Anti-lock Braking System (ABS)	●	●	●	●
Electronic Brake-pressure Distribution (EBD)	●	●	●	●
Anti-Slip Regulation (ASR)	●	●	●	●
Electronic Differential Lock (EDL)	●	●	●	●
Extended Electronic Differential Lock (XDL)	—	—	—	●
Multi-Collision Brake	●	●	●	●
Rear View Camera	A	●	●	●
Driver and front passenger airbags	●	●	●	●
Driver and front passenger side airbags	●	●	●	●
Curtain airbags - front and rear	●	●	●	●
Driver's knee airbag	●	●	●	●
Rear side airbags	—	●	●	●
Emergency fuel supply cut-off	●	●	●	●
Automatic flashing brake lights activated in emergency braking situation	●	●	●	●
Electronic engine immobiliser	●	●	●	●
Alarm with interior monitoring, back up alarm horn and Safe system	○	○	○	○
Tyre pressure monitoring system	●	●	●	●
Passenger Protect Assist	—	●	●	●
Fatigue detection	—	●	●	●
Height-adjustable three-point front seat belts with pretensioners; three-point rear seatbelts	●	●	●	●
Height-adjustable front headrests with WOKS (whiplash optimised head restraints)	●	●	●	—
Height-adjustable rear headrests	●	●	●	●
ISOFIX child seat anchorage points, outer rear seats	●	●	●	●
Front fog lights	●	●	●	●
Rear fog lights	●	●	●	●
Front fog lights with cornering function	—	A	●	●
Light Assist (coming home, leaving home, tunnel light, day light) and rain sensor	—	A	●	●
Safety reflectors in front doors	●	●	—	—
Warning lights in front doors	—	—	●	●
Daytime running lights	●	●	●	●
Function and Storage				
Green Tech - Start/stop system and brake energy recuperation	●	●	●	●
3-spoke multi-functional leather steering wheel including radio and telephone controls: height and reach adjustable	●	●	●	—
3-spoke multi-functional leather sports steering wheel including radio and telephone controls; height and reach adjustable (with paddle shifts for DSG gearbox)	—	—	—	●
Multi-function trip computer with high resolution display including trip time, trip length, average and current speed, average and current fuel consumption, distance until empty, oil temperature and outside temperature indicator, vehicle status, audio and telephone	●	●	●	●
Colour Maxi DOT display	—	—	●	●
Simply Clever package (rubbish bin in door panel, multimedia device holder and double-sided mat in boot)	●	●	●	●
Front and rear carpet floor mats	●	●	●	●
12 volt socket in luggage compartment and centre console	●	●	●	●
Sunglasses holder	●	●	●	●

● standard ○ option — not offered A available in optional package

Model equipment (continued)

Function and Storage (continued)	Ambition	Ambition Plus	Style	RS
Cup holders (2) in centre console	●	●	●	●
1.5L bottle storage compartment in front door panelling	●	●	●	●
500ml bottle storage compartment in rear door panelling	●	●	●	●
Rear seat centre armrest with cup holders and load through provision (Sedan)	—	—	●	●
Rear seat centre armrest with cup holders and load through provision (Wagon)	●	●	●	●
Split folding rear seat backrest (60/40)	●	●	●	●
Split folding rear seat backrest (60/40) with remote release	—	—	—	●
Rear storage pocket on front seats	●	●	●	●
Ticket holder on A-pillar	●	●	●	●
Open storage compartment in centre console	●	—	—	—
Storage box behind left rear wheel well*	●	●	—	●
Storage box with cargo elements behind both rear wheel wells **	—	—	●	—
Front Aero wipers with wash/wipe function	●	●	●	●
Rear wipers with wash/wipe function	●	●	●	●
Push-push - tank lid opening with electric release (through the central locking)	●	●	●	●
Preparation for tow bar	●	●	●	●
16" steel spare wheel (speed limited)	●	—	—	—
6 anchor points in luggage compartment	●	●	●	●
Softtouch - electro-mechanic boot opening	●	●	●	●
Automatic tailgate opening and closing (Wagon)	—	○	○	○
Rolling cover for luggage compartment (Wagon)	●	●	●	●
Two folding hooks in luggage compartment (Sedan) ***	—	—	●	—
Foldable hooks in luggage compartment (Wagon)	●	●	●	●

* On right side with Canton sound system (Tech Pack) ** Right side only with Canton sound system (Tech Pack) *** Only one hook with Canton sound system (Tech Pack)

Comfort and Convenience	Ambition	Ambition Plus	Style	RS
5" touch screen Swing radio with MP3 player including Bluetooth® audio and streaming, USB, AUX and SD card slot (4 speakers)	●	—	—	—
6.5" touch screen Bolero radio with MP3 player including Bluetooth® audio and streaming, USB, AUX and SD card slot (8 speakers)	—	●	—	—
8" touch screen Columbus satellite navigation system including SmartLink smartphone connectivity with Apple Carplay® and Android Auto™, Bluetooth® with voice control, audio and streaming, USB, AUX and 2× SD card slot (8 speakers)	—	○	●	●
Driving Mode Selection with performance sound actuator	—	—	—	●
Comfort Bluetooth® phone connection	●	●	—	—
Comfort Bluetooth® phone connection with voice control	—	—	●	●
Cruise control	A	●	●	●
2 front and rear reading lights	●	●	●	●
Rear centre light	●	●	●	●
Air conditioning	●	●	—	—
Dual-zone 'Climatronic' air conditioning with humidity sensor	—	—	●	●

● standard ○ option — not offered A available in optional package

Model equipment (continued)

Comfort and Convenience (continued)	Ambition	Ambition Plus	Style	RS
Height-adjustable driver seat	●	—	—	—
Height-adjustable driver and passenger seat	—	●	●	—
Height-adjustable driver and passenger sports seats with lumbar support and integrated headrests; embroided RS logo and red stitching	—	—	—	●
Interior ambience lighting (CatVision)	—	—	●	●
Front armrest with storage	A	●	●	●
Illuminated and air conditioned glove box	●	●	●	●
Driver's and passenger's side vanity mirrors in sun visor	●	●	●	●
Electrically adjustable and heated exterior mirrors	●	●	—	●
Electrically adjustable, heated and foldable exterior mirrors with environment lights	—	—	●	—
Power front and rear windows	●	●	●	●
Tinted windows	●	●	●	●
Privacy Glass (Sun Set)	—	—	●	●
Electric panoramic sunroof (Wagon)	○	○	○	○
Electric sunroof (Sedan)	○	○	○	○
Remote central locking (2 foldable keys)	●	●	●	●
Rear parking sensors	A	●	—	—
Front and rear parking sensors	—	A	●	●
Design				
Sports leather package (3-spoke sports steering wheel, hand brake handle, gear lever handle)	—	—	—	●
Leather package (3-spoke steering wheel, hand brake handle, gear lever handle)	●	●	●	—
Fabric seats	●	●	—	—
Leather appointed seat upholstery [^]	—	—	●	—
Leather and fabric appointed seat upholstery with red stitching [^]	—	—	—	●
Leather appointed seat upholstery with red stitching [^]	—	—	—	○
Chrome inner door handles	●	●	●	●
Sports rear spoiler	—	—	—	●
Rear bumper with reflectors	●	●	●	●
Height adjustable Halogen headlights	●	●	●	—
Tecton steel wheels 6.5J x 16"	●	—	—	—
Denom alloy wheels 7J x 17"	A	●	—	—
Golus alloy wheels 7.5J x 18"	—	—	●	—
Alaris alloy wheels 7.5J x 18"	—	○	○	—
Pictoris alloy wheels 7.5J x 18"	—	—	—	●
Black roof rails (Wagon)	●	●	—	—
Silver roof rails (Wagon)	—	—	●	●
Chrome plated window frames	—	—	●	○
Black rear diffuser	—	—	—	●
RS badging (front door sills, front grille and tailgate)	—	—	—	●
Sports chassis with lower ground clearance	—	—	—	●
Instrument panel in RS design	—	—	—	●
Bi-Xenon headlights with function AFS - Adaptive Frontlight System including integrated headlight washers, LED daytime running light	—	A	A	●
Rear LED lights	—	A	A	●
Red coloured disc-brake callipers	—	—	—	●
Aluminium finish clutch, accelerator and brake pedals	—	—	—	●
Integrated chrome exhaust tailpipes, left and right	—	—	—	●

● standard ○ option — not offered A available in optional package [^]Leather appointed seat upholstery have a combination of genuine and artificial leather, but are not wholly leather.

Model equipment (continued)

Optional Packages	Ambition	Ambition Plus	Style	RS
Travel Pack				
Rear parking sensors	■	—	—	—
Rear View Camera	■	—	—	—
Cruise Control	■	—	—	—
Additional 4 loudspeakers rear	■	—	—	—
Front centre armrest	■	—	—	—
Denom alloy wheels 7J x 17"	■	—	—	—
Tech Pack				
Adaptive Cruise Control including Front Assist with City Emergency Brake	—	■	■	■
Bi-Xenon headlights with function AFS - Adaptive Frontlight System including integrated headlight washers, LED daytime running lights	—	■	■	—
Front fog lights with cornering function, black-frosted glass design	—	■	■	—
Rear LED lights	—	■	■	—
Light assist (coming home, leaving home, tunnel light, daylight) and rain sensor	—	■	—	—
Driving Mode Selection	—	■	■	—
Automatic Parking Assist and acoustic front and rear parking sensors	—	■	■	■
Advanced Keyless Entry including Smart Start (KESSY) and Alarm	—	■	■	■
Premium German Canton sound system (10 loudspeakers, digital equaliser)	—	■	■	■
Comfort Pack				
Adjustable driver and passenger seat, driver seat with memory function	—	—	■	■
Automatically foldable door mirrors with auto dimming, memory function and environment lights	—	—	■	■
Front and Rear heated seats	—	—	■	■
Leather appointed seat upholstery with red stitching ^	—	—	—	■
18" Black Pack				
Gemini Anthracite alloy wheels 7.5J x 18"	—	—	—	■
Black side mirrors	—	—	—	■
Black frame around grille	—	—	—	■
Black roof rails (Wagon)	—	—	—	■
19" Black Pack				
Xtreme alloy wheels 7.5J x 19"	—	—	—	■
Black side mirrors	—	—	—	■
Black frame around grille	—	—	—	■
Black roof rails (Wagon)	—	—	—	■

● standard ○ option — not offered ■ Standard in Optional Package

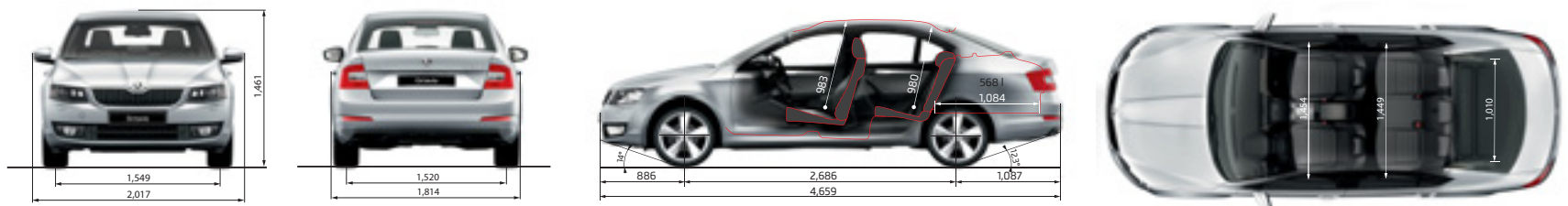
^ Leather appointed seat upholstery have a combination of genuine and artificial leather, but are not wholly leather.

Octavia Sedan – Technical specifications

Model	110TSI MT/DSG	110TDI/DSG
Engine type	turbocharged petrol engine, in-line, liquid cooling system, direct injection, DOHC, transverse in front	diesel engine with variable vane turbocharger, in-line, liquid cooling system, high-pressure direct injection system, DOHC, transverse in front
Cylinders/Displacement [cm ³]	4/1395	4/1968
Max. engine performance/revs [kW at rpm]	110/6000	110/4000
Max. torque/revs [Nm at rpm]	250/1500-3500	320/1750-3000
Fuel quality	Unleaded Petrol min RON 95	diesel
Performance/consumption		
Maximum speed (km/h)	219	215
Acceleration 0-100km/h (s)	8.1 / 8.2	8.5
Consumption [l/100 km]*		
- combined	5.4 / 5.3	4.7
- urban	6.8 / 6.3	5.4
- extra urban	4.5 / 4.5	4.3
CO ₂ emissions [g/km]	126 / 121	123
Transmission		
Driven wheels	Front wheel drive	Front wheel drive
Clutch	hydraulic single dry clutch disc with membrane spring, asbestos free (two coaxial wet multiple-disc clutch, electro-hydraulically operated)	two coaxial wet multiple-disc clutch, electro-hydraulically operated
Transmission	Manual 6-speed / DSG 7-speed (Ambition) Manual 6-speed / DSG 7-speed (Ambition Plus) DSG 7-speed (Style)	DSG 6-speed
Weights		
Tare Mass [kg]	1219 / 1234	1316
Max. roof load [kg]	75	75
Max. trailer load w/o brakes [kg]	620	670
Max. trailer load with brakes [kg]	1500	1600
Max. downball weight [kg]	75	75

Body	Sedan
Drag coefficient C _w	0.301 (110TSI) / 0.297 (110TDI)
Chassis	
Front axle	MacPherson suspension with lower triangular links and torsion stabiliser
Rear axle	Torsion beam axle, trailing arms, coil springs (110TSI & 110TDI)
Braking system	hydraulic dual-diagonal circuit braking system vacuum assisted with Dual Rate system
- front brakes	disc brakes with inner cooling, with single/piston floating caliper
- rear brakes	disc brakes
Steering	direct rack-and-pinion steering with electro mechanic power steering
Wheels	6.5jx16" (Ambition) / 7jx17" (Ambition Plus) / 7.5jx18" (Style) 7.5jx18" (110TDI)
Tyres	205/55 R16 (Ambition) / 225/45 R17 (Ambition Plus) / 225/40 R18 (Style) 225/40 R18 (110TDI)
Tank capacity (l)	50

Outside dimensions	
Length (mm)	4659
Width (mm)	1814
Height (mm)	1461
Wheel base (mm)	2686
Track front/rear (mm)	1543/1514 (Ambition) / 1537/1508 (Ambition Plus) / 1533/1504 (Style)
Inside dimensions	
Width - front/rear	1454 / 1449
Headroom - front/rear	983 / 980
Storage capacity	
with rear seats upright (l)	568
with rear seats down (l)	1558



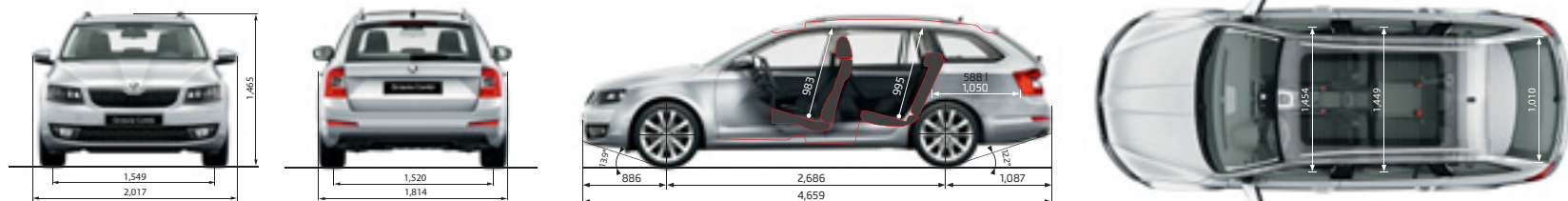
*Fuel consumption figures according to Australian Design Rule (ADR) 81/102. The driving style, road and traffic conditions, environmental influences, the fitment of accessories and vehicle condition can in practice lead to consumption figures which may differ from those calculated with these standards.

Octavia Wagon - Technical specifications

Model	110TSI MT/DSG	110TDI/DSG
Engine type	turbocharged petrol engine, in-line, liquid cooling system, direct injection, DOHC, transverse in front	diesel engine with variable vane turbocharger, in-line, liquid cooling system, high-pressure direct injection system, DOHC, transverse in front
Cylinders/Displacement [cm ³]	4/1395	4/1968
Max. engine performance/revs [kW at rpm]	110/6000	110/4000
Max. torque/revs [Nm at rpm]	250/1500-3500	320/1750-3000
Fuel quality	Unleaded Petrol min RON 95	diesel
Performance/consumption		
Maximum speed (km/h)	216	213
Acceleration 0-100km/h (s)	8.2 / 8.3	8.7
Consumption [l/100 km]*		
- combined	5.4 / 5.2	4.7
- urban	6.9 / 6.3	5.4
- extra urban	4.6 / 4.5	4.3
CO ₂ emissions [g/km]	127 / 120	123
Transmission		
Driven wheels	Front wheel drive	Front wheel drive
Clutch	hydraulic single dry clutch disc with membrane spring, asbestos free (two coaxial wet multiple-disc clutch, electro-hydraulically operated)	two coaxial wet multiple-disc clutch, electro-hydraulically operated
Transmission	Manual 6-speed / DSG 7-speed (Ambition) Manual 6-speed / DSG 7-speed (Ambition Plus) DSG 7-speed (Style)	DSG 6-speed
Weights		
Tare Mass [kg]	1251 / 1266	1348
Max. roof load [kg]	75	75
Max. trailer load w/o brakes [kg]	630	680
Max. trailer load with brakes [kg]	1500	1600
Max. downball weight [kg]	75	75

Body		Wagon
Drag coefficient C _w	0.301 (110TSI) / 0.304 (110TDI)	
Chassis		
Front axle	MacPherson suspension with lower triangular links and torsion stabiliser	
Rear axle	Torsion beam axle, trailing arms, coil springs (110TSI & 110TDI)	
Braking system	hydraulic dual-diagonal circuit braking system vacuum assisted with Dual Rate system	
- front brakes	disc brakes with inner cooling, with single/piston floating caliper	
- rear brakes	disc brakes	
Steering	direct rack-and-pinion steering with electro mechanic power steering	
Wheels	6.5jx16" (Ambition) / 7jx17" (Ambition Plus) / 7.5jx18" (Style) 7.5jx18" (110TDI)	
Tyres	205/55 R16 (Ambition) / 225/45 R17 (Ambition Plus) / 225/40 R18 (Style) 225/40 R18 (110TDI)	
Tank capacity (l)	50	

Outside dimensions	
Length (mm)	4659
Width (mm)	1814
Height (mm)	1465
Wheel base (mm)	2686
Track front/rear (mm)	1543/1514 (Ambition) / 1537/1508 (Ambition Plus) / 1533/1504 (Style)
Inside dimensions	
Width - front/rear	1454 / 1449
Headroom - front/rear	983 / 995
Storage capacity	
with rear seats upright (l)	588
with rear seats down (l)	1718



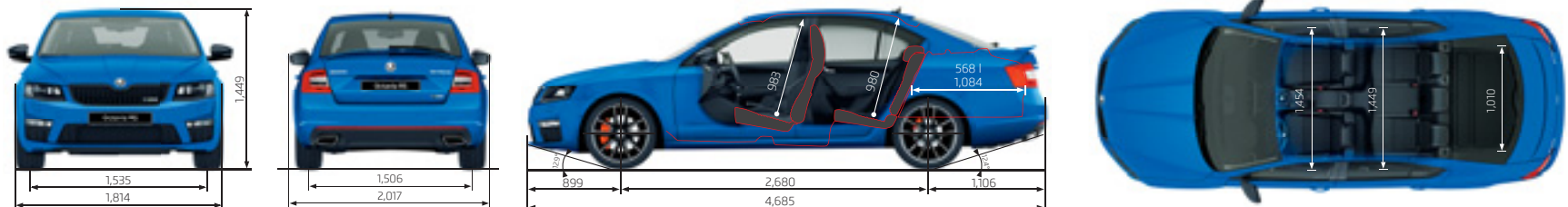
*Fuel consumption figures according to Australian Design Rule (ADR) 81/102. The driving style, road and traffic conditions, environmental influences, the fitment of accessories and vehicle condition can in practice lead to consumption figures which may differ from those calculated with these standards.

Octavia RS Sedan - Technical specifications

Model	162TSI MT/DSG	135TDI DSG
Engine type	turbocharged petrol engine, in-line, liquid cooling system, direct injection, DOHC, transverse in front	diesel engine with variable vane turbocharger, in-line, liquid cooling system, high-pressure direct injection system, DOHC, transverse in front
Cylinders/Displacement [cm ³]	4/1984	4/1968
Max. engine performance/revs [kW at rpm]	162/6200	135/4000
Max. torque/revs [Nm at rpm]	350/1500-4400	380/1750-3000
Fuel quality	Unleaded Petrol min RON 98	diesel
Performance/consumption		
Maximum speed (km/h)	248 / 245	230
Acceleration 0-100km/h (s)	6.8 / 6.9	8.2
Consumption [l/100 km]*		
- combined	6.4 / 6.6	4.8
- urban	7.9 / 8.3	5.7
- extra urban	5.5 / 5.6	4.3
CO ₂ emissions [g/km]	147 / 154	127
Transmission		
Driven wheels	Front wheel drive	Front wheel drive
Clutch	hydraulic single dry clutch disc with membrane spring, asbestos free / (two coaxial wet multiple-disk clutch, electro-hydraulically operated)	two coaxial wet multiple-disk clutch, electro-hydraulically operated
Transmission	Manual 6-speed / DSG 6-speed	DSG 6-speed
Weights		
Tare Mass [kg]	1346 / 1366	1419
Max. roof load [kg]	75	75
Max. trailer load w/o brakes [kg]	710	735
Max. trailer load with brakes [kg]	1600	1600
Max. downhill weight [kg]	75	75

Body		Sedan
Drag coefficient C _w	0.298 (162TS) / 0.294 (135TDI)	
Chassis		
Front axle	MacPherson suspension with lower triangular links and torsion stabiliser. Lowered sports suspension	
Rear axle	Independent, four-link with coil springs, anti-roll bar. Lowered Sports suspension	
Braking system	hydraulic diagonal circuit braking system vacuum assisted with Dual Rate system	
- front brakes	Ventilated disc brakes with inner cooling, with single/piston floating caliper	
- rear brakes	disc brakes	
Steering	direct rack-and-pinion steering with electro mechanic, progressive power steering	
Wheels	7.5x18"	
Tyres	225/40 R18	
Tank capacity (l)	50	

Outside dimensions	
Length (mm)	4685
Width (mm)	1814
Height (mm)	1449
Wheel base (mm)	2680
Track front/rear (mm)	1535 / 1506
Inside dimensions	
Width - front/rear	1454 / 1449
Headroom - front/rear	983 / 980
Storage capacity	
with rear seats upright (l)	568
with rear seats down (l)	1558



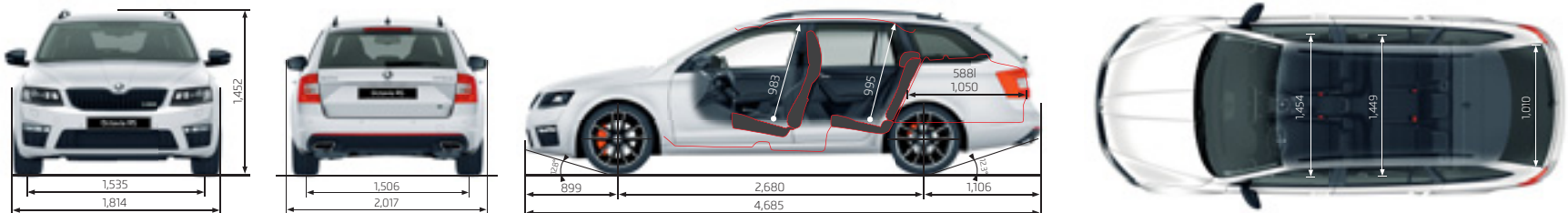
*Fuel consumption figures according to Australian Design Rule (ADR) 81/102. The driving style, road and traffic conditions, environmental influences, the fitment of accessories and vehicle condition can in practice lead to consumption figures which may differ from those calculated with these standards.

Octavia RS Wagon - Technical specifications

Model	162TSI MT/DSG	135TDI DSG
Engine type	turbocharged petrol engine, in-line, liquid cooling system, direct injection, DOHC, transverse in front	diesel engine with variable vane turbocharger, in-line, liquid cooling system, high-pressure direct injection system, DOHC, transverse in front
Cylinders/Displacement (cm ³)	4/1984	4/1968
Max. engine performance/revs (kW at rpm)	162/6200	135/4000
Max. torque/revs (Nm at rpm)	350/1500-4400	380/1750-3000
Fuel quality	Unleaded Petrol min RON 98	diesel
Performance/consumption		
Maximum speed (km/h)	244 / 242	228
Acceleration 0-100km/h	6.9 / 7.1	8.3
Consumption (l/100km)*		
- combined	6.4 / 6.6	4.9
- urban	7.9 / 8.3	5.8
- extra urban	5.5 / 5.6	4.4
CO ₂ emissions (g/km)	147 / 154	129
Transmission		
Driven wheels	Front wheel drive	Front wheel drive
Clutch	hydraulic single dry clutch disc with membrane spring, asbestos free / (two coaxial wet multiple-disc clutch, electro-hydraulically operated)	two coaxial wet multiple-disk clutch, electro-hydraulically operated
Transmission	Manual 6-speed / DSG 6-speed	DSG 6-speed
Weights		
Tare Mass (kg)	1380 / 1400	1453
Max. roof load (kg)	75	75
Max. trailer load w/o brakes	720	745
Max. trailer load with brakes (kg)	1600	1600
Max. downball weight (kg)	75	75

Body		Wagon
Drag coefficient C _w	0.316 (162TS) / 0.315 (135TDI)	
Chassis		
Front axle	MacPherson suspension with lower triangular links and torsion stabiliser. Lowered sports suspension	
Rear axle	Independent, four-link with coil springs, anti-roll bar. Lowered Sports suspension	
Braking system	hydraulic diagonal circuit braking system vacuum assisted with Dual Rate system	
- front brakes	Ventilated disc brakes with inner cooling, with single/piston floating caliper	
- rear brakes	disc brakes	
Steering	direct rack-and-pinion steering with electro mechanic, progressive power steering	
Wheels	7.5Jx18"	
Tyres	225/40 R18	
Tank capacity (l)	50	

Outside dimensions	
Length (mm)	4685
Width (mm)	1814
Height (mm)	1452
Wheel base (mm)	2680
Track front/rear (mm)	1535 / 1506
Inside dimensions	
Width - front/rear	1454 / 1449
Headroom - front/rear	983 / 995
Storage capacity	
with rear seats upright (l)	588
with rear seats down (l)	1718



* Fuel consumption figures according to Australian Design Rule (ADR) 81/102. The driving style, road and traffic conditions, environmental influences, the fitment of accessories and vehicle condition can in practice lead to consumption figures which may differ from those calculated with these standards.

ACCESSORIES

ŠKODA Genuine Accessories add style to your car while enhancing its utility. To get a full overview of our range of products, ask any authorised ŠKODA dealer for an accessories catalogue.



Plastic boot dish for Sedan and Wagon.



3-part Netting System for Sedan and Wagon.



Transverse roof racks for Wagon.



Rubber foot mats will protect the car floor from dampness and dirt.



Alloy wheel 7.5J x 18" **Turini** for tyre 225/40 R18 in matt black design.

General information

OWNING A ŠKODA

ŠKODA New Vehicle Warranty

Every new ŠKODA passenger vehicle is covered by a three-year unlimited kilometre manufacturer's warranty, which includes ŠKODA Assist (24-hour roadside assistance). Every new ŠKODA vehicle is also covered by a 3 year paintwork and 12-year anticorrosion perforation warranty. For further information regarding this New Vehicle Warranty, including pricing and terms and conditions, please consult your local ŠKODA dealer or visit www.skoda.com.au.

ŠKODA Extended Warranty[†]

To give you added peace of mind, you can now purchase an Extended Factory Warranty with your new Octavia. This warranty gives you an additional 2 years/unlimited kilometres of coverage, including roadside assistance. For further information regarding this Extended Warranty, including pricing and terms and conditions, please consult your local ŠKODA dealer or visit www.skoda.com.au



ŠKODA Extended Factory Warranty

Capped Price Servicing Every Calendar Year

The Octavia comes with peace of mind included, with Capped Price Servicing Every Calendar Year now available at participating ŠKODA dealers. Authorised ŠKODA Service Centres have factory trained technicians equipped with the very latest diagnostic equipment, specialist tooling and ŠKODA Genuine Parts. For further information regarding Capped Price Servicing program, including pricing and terms and conditions, please consult your local ŠKODA dealer or visit www.skoda.com.au.



Capped Price Service Every Calendar Year

ŠKODA Assist - 24-Hour Roadside Assistance

As a valued customer, you can be assured that wherever you travel within Australia, you will have access to roadside assistance, 24 hours a day, 365 days a year. This is complimentary for the duration of the vehicle's original ŠKODA warranty period.

You will receive help in the event of a breakdown or accident and, if required, your vehicle will be mobilised or transported to an Authorised ŠKODA Workshop. As a ŠKODA owner you will also have access to the additional benefits of accommodation and car rental if your vehicle cannot be mobilised within 24 hours, when you are over 100km away from home.

ŠKODA Care Pack[‡]

To ensure that extra peace of mind, ŠKODA Care Pack is now available at all authorised ŠKODA dealerships to provide owners even more security and comfort. By combining ŠKODA Extended Factory Warranty and 3 years Scheduled Servicing into one bundle, customers can be confident knowing that their ŠKODA vehicle is in the safe hands of our factory trained technicians. Also, with an added 2 years of roadside assistance, ŠKODA owners can be assured that they are in our excellent care. For further information, regarding this ŠKODA Care Pack, including pricing and terms and conditions, please consult your local ŠKODA dealer or visit www.skoda.com.au.



ŠKODA Genuine Parts[®]

ŠKODA Genuine Parts[®] are designed for your vehicle and approved by ŠKODA, with particular regard to safety. The workmanship, dimensional accuracy and materials used in these parts comply with factory specifications. To ensure safety and reliability, ŠKODA recommends the use of ŠKODA Genuine Parts[®]. ŠKODA Authorised Dealers offer a two-year unlimited kilometre warranty on Genuine Parts from the date of purchase, exclusions apply.

ŠKODA Financial Services

Buying, borrowing or leasing, ŠKODA Financial Services will certainly make you think differently about financing and insuring your new ŠKODA. Committed to meeting the needs of ŠKODA drivers across Australia, we offer a range of leasing, financing and insurance products, each with distinct advantages depending on your specific circumstances. We can tailor a solution to suit your

individual requirements, so you can rest assured that there will be no surprises along the way. Speak to your local participating authorised ŠKODA Dealer today to put together a solution that best suits your lifestyle.

ŠKODA Choice Program[^]

ŠKODA Choice is a finance program available to approved applicants of ŠKODA Financial Services only which provides ŠKODA owners protection around your ŠKODA's future value, whilst offering a simple monthly instalment financing option. Enjoy the peace of mind of knowing the minimum value you can receive for your vehicle at the end of your contracted term. You can choose to either trade-in, return or retain your ŠKODA - it's your choice. Learn more about how to protect your investment by visiting www.skodafinancialservices.com.au/gfv today.



Guaranteed Future Value

Car Configurator



BUILD YOUR OWN OCTAVIA >

Build your own Octavia with the right specifications to suit your lifestyle. Visit www.skoda.com.au



[‡]ŠKODA's Care Pack and 2 Year Extended Warranty are only available for purchase at or before the time of first registration of a new ŠKODA vehicle. It may not be purchased after taking delivery of a vehicle.

[^]The ŠKODA Choice Program consists of an option to require ŠKODA Financial Services to purchase your vehicle at the end of your ŠKODA Financial Services Chattel Mortgage, Consumer Loan or Hire Purchase for a value (known as the Guaranteed Future Value) determined by ŠKODA Financial Services and set out in your contract. The Guaranteed Future Value is not a representation by ŠKODA Financial Services as to the likely market value of your vehicle as at the end of your contract. The option is available on new and demonstrator ŠKODA vehicles for selected models only. Please verify with your dealership vehicles that are eligible for the program. If vehicles are not returned in an acceptable condition, as defined in the terms and conditions or exceed kilometre restrictions the Guaranteed Future Value will be reduced. See the ŠKODA Choice Fair Wear and Tear Guide, downloadable on this page, for more information on the required conditions and circumstances. The cost of the ŠKODA Choice Program is incorporated into the applicable interest rate. Please read the full terms and conditions. Please consider whether these products and services are appropriate for your circumstances. Before acting on any of the information on this page, please seek independent financial and tax advice. Full terms and conditions are available upon application. Available only to approved applicants of ŠKODA Financial Services. Subject to credit assessment. Fees and charges apply. Fleet, government, rental buyers, hire car and chauffeur companies are excluded. Available at participating ŠKODA dealers. ŠKODA Financial Services is a trading name of Volkswagen Financial Services Australia Pty Limited ABN 20 097 071 460. Australian Credit Licence 389344

Glossary

OWNING A ŠKODA

Anti-lock Braking System (ABS)

When braking, sensors in each wheel measure the road speed. If one or more wheels start to lock, the ABS reduces brake pressure to those wheels. This prevents the wheels from locking during heavy or emergency braking and allows you to continue to steer the vehicle.

Anti-Slip Regulation (ASR)

ASR is a switchable traction control system that prevents the front wheels from spinning under acceleration. When a difference in driving wheel speed is detected (e.g. due to differences in road surfaces), the system automatically reduces engine torque accordingly.

Electronic Brake-pressure Distribution (EBD)

This sophisticated system provides an electronic means of regulating the ratio of front to rear brake pressure. The system automatically varies the settings according to driving and load conditions to ensure each wheel is braked to the optimum extent.

Electronic Stability Control (ESC)

The ESC is made up of the ABS and ASR traction control systems. Simply put, it helps ensure that the vehicle goes where you steer it – even in extreme driving conditions. By constantly comparing the actual movement of the vehicle with pre-determined values, ESC will apply the brakes to individual wheels and automatically adjust the engine's power output to correct a problem the very moment it arises.

Adaptative Cruise Control (ACC)

Adaptive Cruise Control (ACC) is an extension of the conventional cruise control system with advanced capabilities based on a radar sensor. When ACC is activated, the vehicle automatically brakes and accelerates to a speed and distance set by the driver.

If the Octavia approaches a slower vehicle, the ACC brakes the car to the same speed and maintains the pre-selected distance. Even when a vehicle pulls into the same lane in front of you or slows, your vehicle is automatically decelerated to the pre-selected distance. If the vehicle ahead moves out of your lane, the Octavia then accelerates up to the preset desired speed.

Deceleration of the vehicle may take place via intervention in the engine management system. If deceleration via engine torque is not sufficient, brake intervention takes place, braking the vehicle to a standstill if the traffic situation necessitates in vehicles equipped with a DSG transmission. ACC can be reactivated automatically by depressing the accelerator pedal. In vehicles fitted with a manual transmission, the system is automatically deactivated at speeds below 30km/h and the driver is prompted to take charge by visual and acoustic signals.

Note: Adaptive Cruise Control (ACC) cannot replace the driver's attentiveness. The driver is still legally responsible for the vehicle and must monitor the speed and distance in relation to other vehicles. The ACC system should not be used on winding roads or in adverse weather conditions such as heavy rain.

Brake Assist

Brake Assist aids the driver during emergency braking by automatically increasing the brake pressure to a level exceeding the locking limit. Then, the ABS is quickly brought into the operating range, thereby enabling maximum vehicle deceleration.

Multi-collision Brake

The multi-collision brake has been designed to provide effective assistance for the driver in the moments after an accident. Multi-collision brake triggers automatic controlled braking once an initial collision has been detected so as to reduce the intensity of further accidents after a collision and can help prevent follow-on collisions with oncoming traffic.

The triggering of the multi-collision brake is based on a collision being detected by the airbag sensors. The ESP control unit limits the deceleration of the vehicle by the multi-collision brake to a defined value and vehicle speed. The vehicle can still be controlled by the driver, even when automatic braking is taking place. The driver can interrupt the multi-collision braking at any time by accelerating or braking even more strongly.

Electronic Differential Lock (EDL)

EDL improves driving and steering characteristics when accelerating on road surfaces where each wheel has a different degree of traction. The system operates automatically and is combined with the ABS system. Using the ABS wheel sensors, EDL monitors the speed of the individual driving wheels. When a difference in driving wheel speed is detected (i.e. when one wheel starts to spin due to differences in road surfaces, e.g. due to water or dirt) the system brakes the spinning wheel, transferring engine power to the wheel with the best traction.

Extended Electronic Differential Lock (XDL)

XDL is an extension of the Electronic Differential Lock (EDL) function. When cornering, XDL responds to the load relief at the front wheel on the inside of a corner. The ESP hydraulics are used for the XDL to apply pressure to the wheel on the inside of the corner in order to prevent wheel spin. This improves traction and reduces the tendency to understeer. As a direct result of the one-sided and precise braking pressure, cornering is sportier and more accurate.





Apple CarPlay® is a registered trademark of Apple Inc. Android Auto™ is a registered trademark of Google Inc. Bluetooth® is a registered trademark of Bluetooth SIG Inc.

ŠKODA is distributed by Volkswagen Group Australia Pty Ltd trading as ŠKODA Australia, 24 Muir Road, Chullora NSW 2190. ABN 14 093 117 876. Specifications are as planned at August 2015, for Model Year 2016 and are subject to change without notice or obligation. All information in this brochure is correct at the time of publication, however variations may occur from time to time and ŠKODA, in so far as it is permitted by law to do so, shall not be liable in any way as a result of any reliance by any person on anything contained in this brochure. Authorised ŠKODA dealers will provide up-to-date information on model application, design feature, prices and availability on request. All colours are a general guide only, as the printing process cannot reproduce the actual exterior colour appearance. See your ŠKODA dealer to confirm colour/model availability.

ŠKODA Finance and ŠKODA Insurance are trading names of Volkswagen Financial Services Australia Pty Limited ABN 20 097 071 460, Australian Credit Licence 389344 (ŠKODA Finance) Locked Bag 6252, Regents Park NSW 2143. www.skodafinance.com.au ŠKODA Insurance is issued by Allianz Australia Insurance Limited ABN 15 000 122 850, AFSL 234708 (Allianz). ŠKODA Insurance and the authorised dealers arrange this insurance as an agent of the insurer Allianz. Policy terms, conditions, limits and exclusions apply. Before making a decision about this insurance, please consider the relevant Product Disclosure Statement available from an authorised dealership. Any advice provided is general advice only and does not take into account your personal objectives, financial situation or needs.

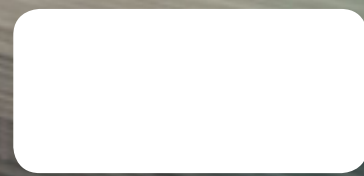
Publication date: September 2015

www.skoda.com.au

@skodaaustralia

www.facebook.com/skodaaustralia

Your ŠKODA partner:



SKOCTRANBRO 0915