

SIMPLY CLEVER

ŠKODA



New ŠKODA Superb



ŠKODA 'Simply Clever'

Being one of the world's oldest car companies, ŠKODA has a long history of excellent craftsmanship and a reputation for exacting standards and delivering on its promise to its customers. By purchasing a ŠKODA you'll join hundreds of thousands of others who enjoy the quality, reliability and safety that defines one of Europe's fastest-growing car brands.

With Volkswagen Group technology underpinning ŠKODA's platform of smart thinking, and with the experience that comes from ŠKODA's proud heritage, the Superb is built to exceed the expectations of Australian drivers. What sets ŠKODA apart is being able to deliver 100% European design, technology and engineering at an extremely affordable price, providing quality and value to the Australian market like never before.

It's what makes ŠKODA 'Simply Clever':



ŠKODA Extended Factory Warranty

Design

The **new ŠKODA Superb** has represented the pinnacle of ŠKODA style and design for nearly eight decades. First introduced to the range in 1934, Superb models have become synonymous with strong design and powerful road presence. Now, thanks to a substantial restyle of both the sedan and wagon models, the latest evolution reaffirms its position at the top of the ŠKODA range.

With a host of design enhancements that align the Superb with the latest members of the ŠKODA family, the flagship model in the range has a new energy and an even more engaging and striking appearance. Sharing the very latest in Volkswagen Group technology, the Superb offers an impressive engine range. Available on the 118TSI petrol is Brake Energy Recuperation – utilising the vehicle's kinetic energy to charge itself when the brakes are applied. In addition, the 125TDI diesel platform also features Start-Stop, allowing the engine to automatically switch off when idle and immediately switch back on as soon as the brake pedal is released. These features result in low CO2 emissions and exceptional fuel consumption across both variants.

Read on to learn more about the Superb's new design and greater comfort.



This vehicle has been awarded a maximum 5 Star Rating by ANCAP.





EXTERIOR

- > Rear LED Lights
- > Cornering Fog Lights

- > Panoramic Sunroof
- > Roof Rails



The Superb is defined by its combination of elegant design and uncompromising functionality. Its bold and sophisticated new look, with sharp angles and clean lines, newly-designed headlights and the new ŠKODA logo, all hint at the Superb's remarkable capabilities.

The front is dominated by the new ŠKODA logo located above the chrome front grille and aligned with the headlights whose straight lines give a compact yet dynamic impression. The front of the Superb has been completely redesigned from the A-pillars forward, with new bonnet, wings, bumper and grille combining to give a familiar yet expressive new look to the Superb range.



Privacy glass is standard on Elegance models for both Sedan and Wagon.

The **rear LED lights** for both sedan and wagon are major design enhancements for the Superb. Furthermore, the rear design have many features that are typical of the new SKODA brand: the new logo, ŠKODA lettering and model name, the triangular recesses defining the space for the number plate and the longitudinal reflectors for better visibility of the car.



As an option on the wagon, the two-part tinted, electric **panoramic sunroof*** gives you the feeling of unlimited space and freedom. The front part of the sunroof can be tilted up and slid backwards, whilst the rear part is firmly built into the roof. The entire sunroof is also equipped with an electrically adjustable sun blind cover.



The tinted **electric sunroof*** for the sedan allows for greater freedom and space.



Activated upon unlocking and opening the door, the **environment lights†** illuminate to help you see surroundings more clearly such as puddles.



In addition to being electrically-adjustable and heated, the **exterior mirrors** are further enhanced to be **foldable with memory function†** on the Elegance model. This allows the mirrors to be automatically adjusted to the setting of the driver's preference.



The **integrated headlight washers†** ensure headlamps are clean so visibility is maximised.

*Optional equipment. † Standard equipment on the Elegance model.

INTERIOR

- > Removable LED Torch
- > Front Electric Seats

- > Front and Rear Heated Seats
- > Umbrella in Rear Passenger Door

The **sun shade for rear side windows*** are manually adjustable and provide increased comfort for rear seat passengers.



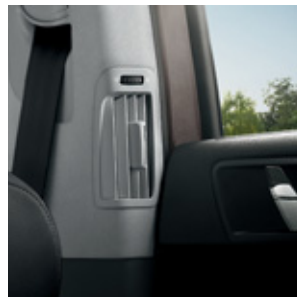
For added convenience, the Elegance model is equipped with electrically adjustable driver and front passenger seats, with the **driver's seat equipped with memory function**. Memory function stores three different positions of the seat and external mirrors. In addition, the Elegance is also equipped with **front and rear heated seats**.



A unique novelty on all Superb models is the **umbrella**, situated on the rear passenger door. This ingenious compartment complete with Superb umbrella is designed so that the water from the wet umbrella flows away from the car and means whatever the weather, you are prepared.



The **rear passenger armrest** contains two cup holders and storage compartment for convenience.



To increase comfortability for rear seat passengers, **air vents** are conveniently located on each B-pillar.



As a standard feature on all wagons, the **removable LED torch** in the luggage compartment comes in handy when driving at night. When clipped in, it automatically recharges while the engine is running.

*Available in optional Driver Pack for the Elegance model.



TECHNOLOGY

- > Automatic Parking Assist
- > Dual zone Climatronic Air-Conditioning

- > Advanced Keyless Entry including Smart Start (KESY)
- > Columbus Navigation System

The **4-spoke multifunction steering wheel** allows full control of the Bluetooth® phone and audio streaming, as well as the control of the trip computer functionalities and vehicle status.



Advanced Keyless Entry Including Smart Start (KESY)* allows the driver to lock and unlock the car and start and stop the engine without having to insert or even handle the key. As long as the key is within 1.5m of the sensor, the system will work, and a number of simply clever features ensure you can check the lock, preventing you from locking the key inside and preventing unwanted access.



The **rain sensor** automatically activates the front wipers based on the rain intensity, applying even pressure on the glass and, therefore, wiping evenly along their whole length.



The **MDI** (Mobile Device Interface) gives you the ability to control a connected external device through the infotainment systems or multi-function steering wheel.

Both diesel and petrol variants feature Volkswagen Group's **automatic DSG** gearbox which guarantees smooth and rapid gear shifts. The 125TDI diesel engine is offered with the 6-speed, whilst the 118TSI petrol engine is complemented with the 7-speed.

*Available in optional Driver Pack for the Elegance model.

The **Bolero audio unit** controlled via 6.5" touchscreen display, has a CD player with MP3 and WMA compatibility, SD card and aux-in socket, as well as Bluetooth® compatibility for audio and phone streaming.



In addition to the Bolero, the **Columbus navigation**† features a 6.5" touch-screen display and voice command function, while intuitive swiping and pinching movements allow the user to scroll menus and zoom into maps easily.

The **10 speaker sound system**† with a 10-channel amplifier and a digital equaliser provides excellent sound reproduction in the vehicle.



The **infodisplay** located on the rear side of the armrest, displays the time and outdoor temperature, and if equipped, control for the rear heated seats†.



The **dual-zone Climatronic Air-Conditioning** allows the driver and front seat passenger to set different temperatures for optimal comfort while the humidity sensor directs air flow as required, to keep the windscreen fog free.

† Standard equipment on the Elegance model.

SPACE AND STORAGE

- > TwinDoor Variable Boot opening (Sedan)
- > Exceptional Boot Space

- > Automatic Boot Opening (Wagon)
- > Roof Rails (Wagon)



The Superb Wagon is equipped with an **automatic boot opening**[†] for easy access to the luggage compartment.

The **rolling cover of the luggage compartment**[†] shifts to the centre position after the electrically adjustable boot is opened, making it highly accessible for luggage.



The **illuminated and air-conditioned glove box** in the lower part of the dashboard by the front passenger is a convenient place to stow away items.

[†] Standard equipment on the Elegance model.



The variable **TwinDoor** boot opening represents a unique structural and design solution. On one hand, it represents a conventional sedan with the standard boot opening to store and access small items. At the touch of a button, the sedan becomes a very practical liftback with the entire rear windscreen opening, enabling complete open access to the boot.

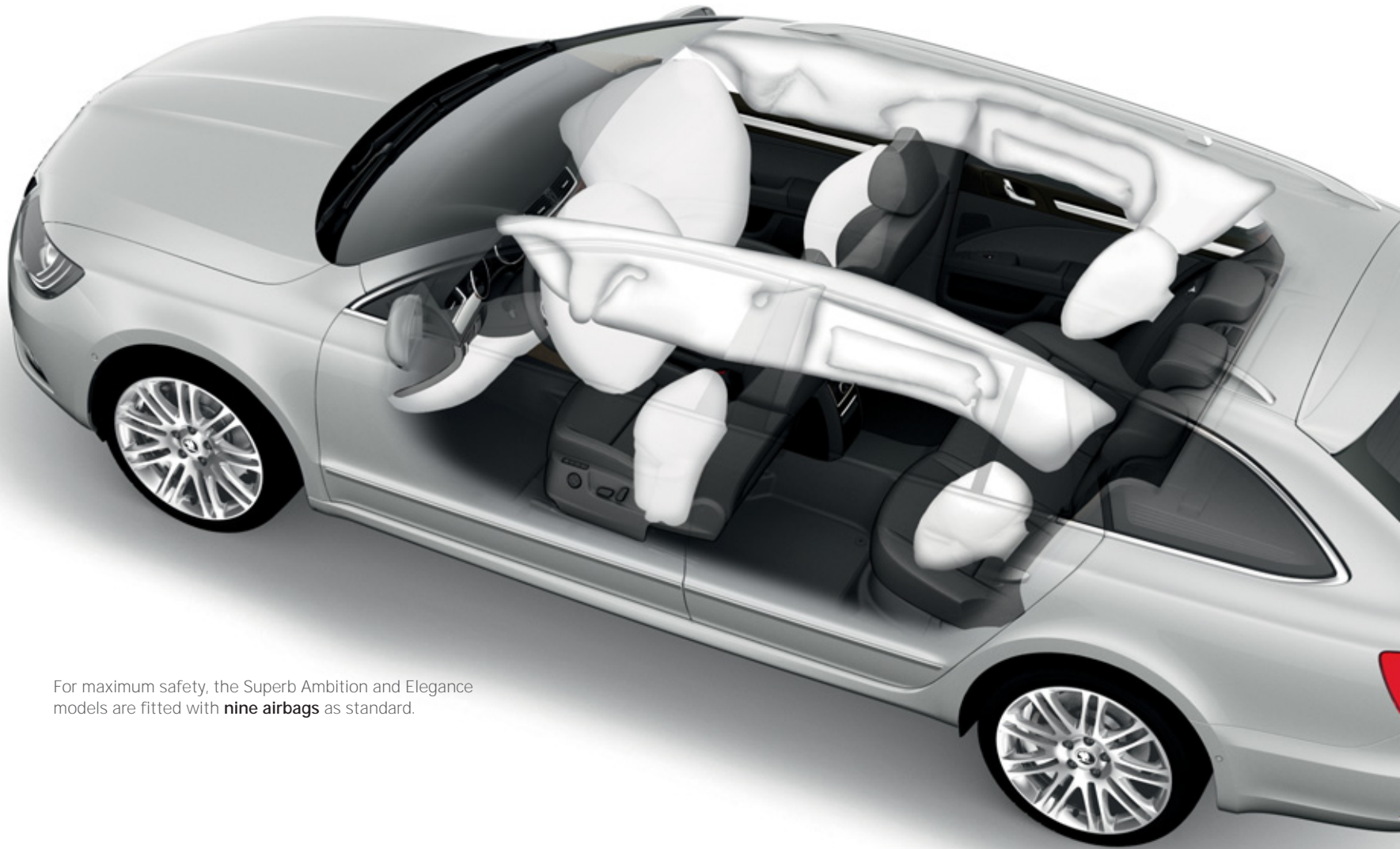


Both sedan and wagon offer exceptional **boot space**. The sedan boasts **565 litres** of space, all easily accessible through the innovative TwinDoor feature. This phenomenal space becomes cavernous with the rear seats folded down, expanding to **1670 litres**. The wagon offers **603 litres** of space with seats up and **1835 litres** with seats down.

SAFETY

- > Bi-Xenon Headlights with LED Daytime Running Lights
- > Electronic Stability Control

- > Fatigue Detection
- > Nine airbags



For maximum safety, the Superb Ambition and Elegance models are fitted with **nine airbags** as standard.

Overseas Model Shown.



A standard feature on the Elegance are the **Bi-Xenon headlights with AFS (Adaptive Frontlight System)**, which are able to adjust the lighting in front of the car to the current driving conditions. In addition, the Bi-Xenon headlights are equipped with rotary modules, which illuminate as you turn. Furthermore, the **front fog lamps with cornering function** are useful during turns in poorly lit areas.



Safety lights on the panelling of the front and rear doors alert passing drivers to the open doors of the stationary vehicle.

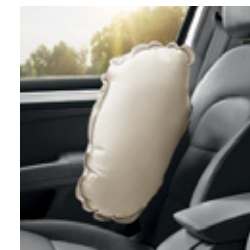
The **curtain airbags**, which create a "wall" along the side windows when activated, protect passengers' heads in the front and rear.



Fatigue detection* monitors the movement of the driver through the steering wheel and if the driver begins to display signs of fatigue, the car will audibly alert the driver with a tone and show a break recommendation alert on the high-resolution display.



The **driver knee airbag** prevents contact with the lower part of the dashboard in the event of a collision.



The **front and rear side airbags** protect the pelvis and chest of the occupants in the event of a side collision.

*Available in optional Driver Pack for the Elegance model. Safety technologies are not a substitute for the driver's responsibility of the vehicle.

ŠKODA Superb Ambition



The **Ambition** model interior features black fabric upholstery and black dashboard with metallic inserts. The Ambition model also includes a host of technology and comfort features as standard, including: a 4-spoke multifunctional steering wheel; Dual-zone climatronic air conditioning; Touch-screen Bolero audio unit with Bluetooth® audio and phone streaming.

ŠKODA Superb Elegance



The **Elegance** model interior features black leather appointed upholstery with metallic inserts. In addition to the standard features on Ambition, the Elegance model includes: Touch-screen Columbus Satellite Navigation, 10-speaker premium sound system, Automatic Parking Assist, front and rear heated seats and electrically adjustable driver and front passenger seat (driver's seat with memory function).

ŠKODA Superb colours



Candy White uni



Moon White metallic



Brilliant Silver metallic



Black Magic pearl effect



Cappuccino metallic

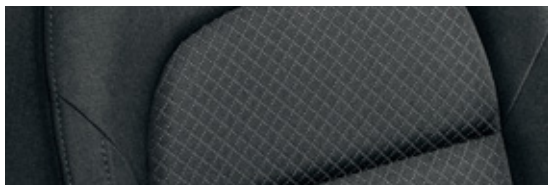


Metal Grey metallic



Magnetic Brown metallic

ŠKODA Superb interior



Ambition interior
black fabric



Elegance interior
black leather appointed

ŠKODA Superb wheels



7.5J x 17" **Twister** alloy wheels
for 225/45 R17 tyres.



7.5J x 18" **Trinity** alloy wheels
for 225/40 R18 tyres.

The print process does not allow for exact reproduction of the exterior or upholstery colours. Please contact your ŠKODA dealer for further information on colours, price and availability.

Model equipment

Safety and Security	Ambition	Elegance
Electronic Stability Control (ESC) (incl. Hill Hold Control)	●	●
Anti-lock Braking System (ABS)	●	●
Anti-Slip Regulation (ASR)	●	●
Electronic Differential Lock (EDL)	●	●
Driver and front passenger airbags	●	●
Driver and front passenger side airbags	●	●
Curtain airbags	●	●
Driver knee airbag	●	●
Rear side airbags	●	●
Emergency fuel supply cut-off	●	●
Automatic flashing brake lights activated in emergency braking situation	●	●
Electronic engine immobiliser	●	●
Tyre pressure monitoring system	—	●
Height-adjustable three-point front seat belts with pretensioners; three-point rear seatbelts	●	●
Height-adjustable front headrests with WOKS (whiplash optimised head restraints)	●	●
Front fog lights with cornering function incl. daytime running lights	●	—
Front fog lights with cornering function	—	●
Bi-Xenon headlights with function AFS – Adaptive Frontlight System including integrated headlight washers, LED daytime running light	—	●
ISOFIX child seat anchorage points, outer rear seats	●	●
Warning lights on front and rear door panels	●	●
Alarm with interior monitoring, tilt sensor and back up horn, Safe system	○	●
Function and Storage		
4-spoke multi-functional leather steering wheel including radio and telephone controls; height and reach adjustable	●	●
Multi-function trip computer with high resolution display including trip time, trip length, average and current speed, average and current fuel consumption, distance until empty, oil temperature and outside temperature indicator, vehicle status, audio and telephone	●	●
TwinDoor – variable boot opening (Sedan only)	●	●
Removable LED torch in the luggage compartment (Wagon)	●	●
12V socket in luggage compartment; 2 sockets in centre console (front and rear)	●	●
2 foldable hooks in luggage compartment	●	●
Anchorage points in luggage compartment	●	●
Textile floor mats	●	●
Umbrella in rear passenger door	●	●
Two cup holders in centre console	●	●
Door-open indicator	●	●
Sunglasses holder	●	●
Illuminated and air conditioned glove box	●	●
Illuminated compartment in central console	●	●
Interior illumination on all doors	●	●
Illuminated door handles	●	●
Light assist (Coming home, Leaving home, Tunnel light, daylight)	●	●

● standard ○ option — not offered

Model equipment (continued)

Function and Storage (continued)	Ambition	Elegance
Low washer fluid level warning light	●	●
Rear seat centre armrest with cup holders and load through provision	●	●
Pockets in front and rear doors	●	●
Push-push – tank lid opening with electric release (through the central locking)	●	●
Removable rear parcel shelf (Sedan)	●	●
Softtouch – electro-mechanic boot opening	●	●
Automatic boot opening and closing (Wagon)	—	●
Split folding rear seat backrest (60/40)	●	●
Illuminated front armrest with storage compartment	●	●
Infodisplay for rear passengers (outdoor temperature and time)	●	●
Storage pocket under steering wheel	●	●
Rear storage pockets on front seats	●	●
Storage box behind rear wells	●	●
Net storage on front passenger side	●	●
Front and rear foldable roof handles (with hooks)	●	●
Ticket holder on A pillar	●	●
Front Aero wipers with wash/wipe function	●	●
Rear wiper with wash/wipe function (Wagon)	●	●
Tinted and heated rear windscreen	●	●
Space saver spare wheel	●	●
Preparation for tow bar	●	●
Comfort and Convenience		
Touch screen 6.5" Bolero radio with MP3 player including Bluetooth® audio and phone streaming, USB, AUX, CD player and SD card slot (8 speakers)	●	—
Touch screen 6.5" Columbus Satellite Navigation with integrated audio including Bluetooth® audio and streaming, USB, AUX and SD card slot (10 speakers)	—	●
MDI (Mobile Device Interface)	●	●
2 front and rear reading lights	●	●
Height-adjustable driver and passenger seat with lumbar support	●	●
Electrically adjustable driver and front passenger seat (driver's seat with memory function)	—	●
Front and rear heated seats	—	●
Electrically adjustable and heated exterior mirrors	●	—
Electrically adjustable, heated and foldable exterior mirrors with memory function and environment lights	—	●
Central door locking with remote control (2 foldable keys)	●	●
Dual-zone 'Climatronic' air conditioning	●	●
Rear air vents on B pillar	●	●
Pollen filter	●	●
Driver and front passenger foot space illumination	●	●
Power front and rear windows with child lock	●	●
Hanger on "B" pillar	●	●
Driver and passenger vanity mirrors in sun visors	●	●
Interior ambience lighting (CatVision)	●	●

● standard ○ option — not offered

Model equipment (continued)

Comfort and Convenience (continued)	Ambition	Elegance
Tinted windows	●	●
Rear parking sensors	●	—
Automatic Parking Assist with front and rear parking sensors	—	●
Cruise control	●	●
Rain sensor	●	●
Automatically dimming rear view mirror	—	●
Automatically dimming exterior mirrors	—	●
Premium sound system (10 loudspeaker, digital equaliser and 10 channel amplifier)	—	●
Rolling cover for luggage compartment (Wagon)	●	●
Privacy Glass (SunSet)	—	●
Electric sunroof (Sedan)	○	○
Electric panoramic sunroof (Wagon)	○	○

Design	Ambition	Elegance
Leather package (4-spoke steering wheel, gearshift lever, hand brake grip)	●	●
Fabric seat upholstery	●	—
Leather seat upholstery [^]	—	●
Chromed double exhaust tailpipes	●	●
Front and rear door sill trims	●	●
Chrome plated window frames	●	●
Chromed radiator grille frame	●	●
Chromed strip on lower grille	●	●
Rear bumper with reflectors	●	●
Height-adjustable halogen headlights	●	—
Rear LED lights	●	●
Chrome-plated, protective side mouldings	—	●
Alloy wheels Twister 7.5x17" – 4pcs.	●	—
Alloy wheels Trinity 7.5x18" – 4pcs.	—	●
Roof rails, black (Wagon)	●	—
Roof rails, silver (Wagon)	—	●

Optional Packages	Ambition	Elegance
Travel Pack		
Alloy wheels Trinity 7.5x18" – 4pcs.	■	—
Front parking sensors	■	—
Privacy Glass (Sun Set)	■	—
Driver Pack		
Advanced Keyless Entry including Smart Start (KESY)	—	■
Fatigue detection	—	■
Sun shade for rear side windows (manually operated)	—	■

● standard ○ option ■ standard in optional package — not offered

[^]Some parts of the leather appointed seat upholstery will contain man-made material.

Superb Sedan – Technical specifications

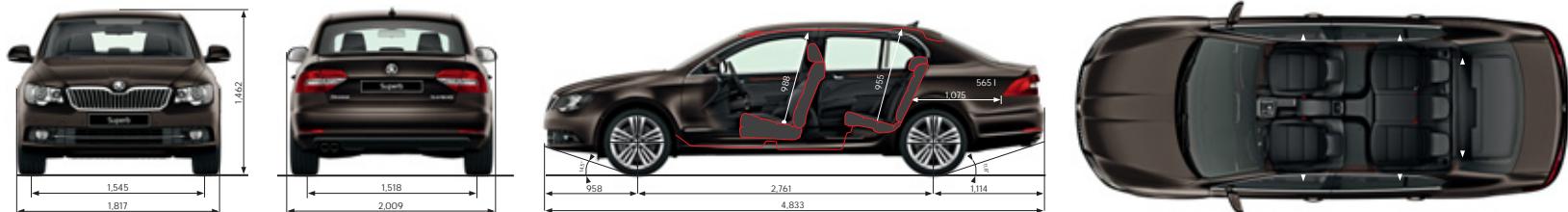
Engine	118TSI DSG	125TDI DSG*
	Turbocharged petrol engine, in-line, liquid cooling system, direct injection, DOHC, transverse in front	
	Diesel engine with variable vane turbocharger, in-line, liquid cooling system, high-pressure direct injection system, DOHC, transverse in front	
Cylinders/Displacement (cm ³)	4/1798	4/1968
Max. engine performance/revs (kW at rpm)	118/5000	125/4200
Max. torque/revs (Nm at rpm)	250/1500	350/1750–2500
Fuel quality	95	diesel
Air pollution regulation	EU5	EU5
Performance		
Maximum speed (km/h)	222	222
Acceleration 0–100 km/h (s)	8.4	8.6
Consumption (l/100km) (ADR 81/02)		
– combined	7.2	5.5
– urban	9.5	6.5
– extra-urban	5.8	4.8
CO ₂ emissions (g/km)	167	145
Transmission		
Driven wheels	Front wheel drive	Front wheel drive
Clutch	Two coaxial wet multiple-disc clutch, electro-hydraulically operated	Two coaxial wet multiple-disc clutch, electro-hydraulically operated
Transmission	DSG 7-speed	DSG 6-speed
Weight		
Tare Mass (kg)	1536	1585
Max. roof load (kg)	100	100
Max. trailer load w/o brakes	700	700
Max. trailer load with brakes (kg)	1500	1500
Max. downball weight (kg)	75	75

Body		Sedan
Drag coefficient C _w	0.3 (118TSI) / 0.29 (125TDI)	
Chassis		
Front axle	MacPherson suspension with lower triangular links and torsion stabiliser	
Rear axle	Independent, four-link with coil springs, anti-roll bar	
Braking system	Hydraulic dual-diagonal circuit braking system vacuum assisted with Dual Rate system	
– front brakes	Disc brakes with inner cooling, with single/piston floating caliper	
– rear brakes	Disc brakes	
Steering	Direct rack-and-pinion steering with electro mechanic power steering	
Wheels	7Jx17" (118TSI) / 7.5Jx18" (125TDI)	
Tyres	225/45 R17 (118TSI) / 225/40 R18 (125TDI)	
Tank capacity (l)	60	

Outside dimensions	
Length (mm)	4833
Width (mm)	1817
Wheelbase (mm)	2761
Track front/rear (mm)	1537/1510 (118TSI) 1543/1516 (125TDI)

Inside dimensions	
Width - front/rear	1468/1451
Headroom - front/rear	988/955

Storage capacity	
with rear seats upright (l)	565
with rear seats down (l)	1670

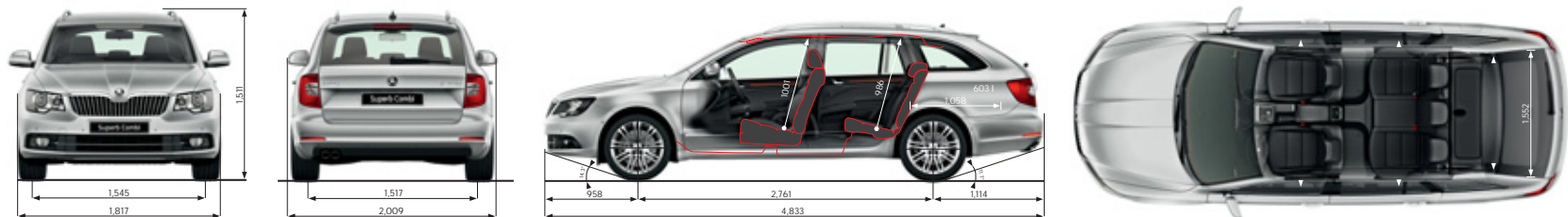


Superb Wagon – Technical specifications

Engine	118TSI DSG	125TDI DSG*
	Turbocharged petrol engine, in-line, liquid cooling system, direct injection, DOHC, transverse in front	
	Diesel engine with variable vane turbocharger, in-line, liquid cooling system, high-pressure direct injection system, DOHC, transverse in front	
Cylinders/Displacement (cm3)	4/1798	4/1968
Max. engine performance/revs (kW at rpm)	118/5000	125/4200
Max. torque/revs (Nm at rpm)	250/1500	350/1750–2500
Fuel quality	95	diesel
Air pollution regulation	EU5	EU5
Performance		
Maximum speed (km/h)	221	221
Acceleration 0–100 km/h (s)	8.5	8.7
Consumption (l/100km) (ADR 81/02)		
– combined	7.3	5.6
– urban	9.6	6.6
– extra-urban	5.9	4.9
CO ₂ emissions (g/km)	169	146
Transmission		
Driven wheels	Front wheel drive	Front wheel drive
Clutch	Two coaxial wet multiple-disc clutch, electro-hydraulically operated	Two coaxial wet multiple-disc clutch, electro-hydraulically operated
Transmission	DSG 7-speed	DSG 6-speed
Weight		
Tare Mass (kg)	1558	1605
Max. roof load (kg)	100	100
Max. trailer load w/o brakes	700	700
Max. trailer load with brakes (kg)	1500	1500
Max. downball weight (kg)	75	75

Body	Wagon
Drag coefficient C _w	0.3 (118TSI) / 0.29 (125TDI)
Chassis	
Front axle	MacPherson suspension with lower triangular links and torsion stabiliser
Rear axle	Independent, four-link with coil springs, anti-roll bar
Braking system	Hydraulic dual-diagonal circuit braking system vacuum assisted with Dual Rate system
– front brakes	Disc brakes with inner cooling, with single/piston floating caliper
– rear brakes	Disc brakes
Steering	Direct rack-and-pinion steering with electro mechanic power steering
Wheels	7Jx17" (118TSI) / 7.5Jx18" (125TDI)
Tyres	225/45 R17 (118TSI) / 225/40 R18 (125TDI)
Tank capacity (l)	60

Outside dimensions	
Length (mm)	4833
Width (mm)	1817
Wheelbase (mm)	2761
Track front/rear (mm)	1537/1510 (118TSI) 1543/1516 (125TDI)
Inside dimensions	
Width - front/rear	1468/1451
Headroom - front/rear	1001/986
Storage capacity	
with rear seats upright (l)	603
with rear seats down (l)	1835



*2.0 125TDI DSG incl. Start-Stop technology and Brake Energy Recuperation.

ACCESSORIES

SKODA Genuine Accessories add style to your car while enhancing its utility. To get a full overview of our range of products, ask any authorised SKODA dealer for an accessories catalogue.



Overseas Model Shown



With the **netting system** you will increase the variability of the luggage space and prevent objects from moving.



The **17" Twister alloy wheels** are aimed at those who prefer sports-elegant style.



The **rubber boot mat** represents an exceptionally effective form of protection of the luggage compartment floor from dust, mud and dampness. Also available is an elegant textile boot mat, which can be easily vacuumed.



The **plastic boot dish** of the sedan version will keep the luggage compartment tidy and prevent damage to upholstery.



Our range includes **connecting cables for MDI** (Mobile Device Interface).

It is noted that the above accessories may have an effect on fuel efficiency. Items such as sports equipment and iPod® are for illustration purposes only and are not available from SKODA dealers. For a full range of genuine accessories, please consult your SKODA dealer or visit skoda.com.au.

General information

OWNING A ŠKODA

ŠKODA New Vehicle Warranty

Every new ŠKODA passenger vehicle is covered by a three-year unlimited kilometre manufacturer's warranty, which includes ŠKODA Assist (24-hour roadside assistance). Every new ŠKODA vehicle is also covered by a three-year paintwork and 12-year anti-corrosion perforation warranty.

ŠKODA Extended Warranty

To give you added peace of mind, you can now purchase an Extended Factory Warranty with your new Superb. This warranty gives you an additional two years/unlimited kilometres of coverage, including roadside assistance. For further information regarding this Extended Warranty, including pricing and terms and conditions, please consult your local ŠKODA dealer or visit skoda.com.au



ŠKODA Extended Factory Warranty

ŠKODA Assist – 24-Hour Roadside Assistance

As a valued customer, you can be assured that wherever you travel within Australia, you will have access to roadside assistance, 24 hours a day, 365 days a year. This is complimentary for the duration of the vehicle's original ŠKODA warranty period. You will receive help in the event of a breakdown or accident and, if required, your vehicle will be mobilised or transported to an Authorised ŠKODA Workshop. As a ŠKODA owner you will also have access to the additional benefits of accommodation and car rental if your vehicle cannot be mobilised within 24 hours, when you are over 100km away from home.

ŠKODA Genuine Parts®

ŠKODA Genuine Parts® are designed for your vehicle and approved by ŠKODA, with particular regard to safety. The workmanship, dimensional accuracy and materials used in these parts comply with factory specifications. To ensure safety and reliability, ŠKODA recommends the use of ŠKODA Genuine Parts®. ŠKODA Authorised Dealers offer a two-year unlimited kilometre warranty on Genuine Parts from the date of purchase.

ŠKODA Finance*

Buying, borrowing or leasing, ŠKODA Finance will certainly make you think differently about financing and insuring your new ŠKODA. Committed to meeting the needs of ŠKODA drivers across Australia, we offer a range of leasing, financing and insurance products, each with distinct advantages depending on your specific circumstances. Our packages are personalised to suit your individual requirements. You design your plan so that it meets your budgeting needs and rest assured that there will be no surprises along the way. Speak to your local participating Authorised ŠKODA Dealer today to put together a financial solution that best suits your lifestyle.



BUILD YOUR OWN SUPERB >

Build your own Superb with the right specifications to suit your lifestyle. Coming soon. Visit skoda.com.au

Capped Price Servicing

The Superb comes with peace of mind included, with Capped Price Servicing# now available at participating ŠKODA dealers. Authorised ŠKODA Service Centres have factory trained technicians equipped with the very latest diagnostic equipment, specialist tooling and ŠKODA Genuine Parts. They also undertake work in accordance to factory specified guidelines and maintenance schedules, so you can be confident that your Superb will be well taken care of.


Capped price servicing is available at participating ŠKODA dealers on New Superb. Capped price servicing applies to the first 6 standard scheduled services of your vehicle which are scheduled to occur at every 15,000km/12 month interval (whichever occurs first). Exclusions and conditions apply. For details on pricing, items not included in the capped price and for full terms and conditions please see skoda.com.au. ŠKODA Australia reserves the right to at any time modify or discontinue the Capped Price Servicing program.



Capped Price Service

One of the most important goals of ŠKODA AUTO is the development and manufacture of products that are as environmentally friendly as possible throughout their life cycle phases, placing principal emphasis on the selection of recyclable materials. Our ŠKODA cars are produced using progressive types of technology in modern production facilities that meet the strictest criteria. Anticorrosive protection of the cars' painted parts is based exclusively on lead-free cathaphoresis (KTL) and water-soluble paints.

Our company strategy includes limiting fuel consumption and emissions. As a result, the engines we offer meet the current emission regulations. All ŠKODA products are made using manufacturing processes that adhere to the laws and regulations concerning the protection of soil and water. As a result of these activities, ŠKODA cars meet technical, safety, quality and environmental requirements. ŠKODA AUTO contributes to the preservation of a clean environment and provides mobility and comfort to its customers.

The environmental logo expresses ŠKODA AUTO's awareness of, responsibility for and attempts at the sustainable development of the company and a friendly approach to life and nature. 



ŠKODA is distributed by Volkswagen Group Australia Pty Limited trading as ŠKODA Australia, 24 Muir Road, Chullora NSW 2190. ABN 14 093 117 876. Specifications are as planned at July, 2014 for Model Year 2014 and are subject to change without notice or obligation. Cars and accessories shown may not depict Australian specifications. Fuel consumption figures according to Australian Design Rules (ADR) 81/02. All ŠKODA approved parts and accessories are warranted for 2 years/unlimited kilometres. All information in this brochure is correct at the time of publication, however variations may occur from time to time and ŠKODA, in so far as it is permitted by law to do so, shall not be liable in any way as a result of any reliance by any person on anything contained in this brochure. The print process does not allow for exact reproduction of the exterior or upholstery colours. Please contact your ŠKODA dealer for further information on colours, price and availability. Authorised ŠKODA Dealers will provide up-to-date information on model application, design feature, prices and availability on request.

ŠKODA Finance and ŠKODA Insurance are trading names of Volkswagen Financial Services Australia Pty Limited ABN 20 097 071 460, Australian Credit Licence 389344 (ŠKODA Finance) Locked Bag 6252, Regents Park NSW 2143. www.SKODAFinance.com.au
ŠKODA Insurance is issued by Allianz Australia Insurance Limited ABN 15 000 122 850, AFSL 234708 (Allianz). ŠKODA Insurance and the authorised dealers arrange this insurance as an agent of the insurer Allianz. Policy terms, conditions, limits and exclusions apply. Before making a decision about this insurance, please consider the relevant Product Disclosure Statement available from an authorised dealership. Any advice provided is general advice only and does not take into account your personal objectives, financial situation or needs.

Publication date: July 2014

skoda.com.au

 facebook.com/SKODAOz

Your ŠKODA partner:

