

**LEVORG**  
SPORTSWAGON  
2018

**turbocharge**  
your **everyday**



**do**







## turbocharge your everyday

The 2018 Subaru Levorg Sportswagon has arrived, to make every day faster, better and more fun. With a ground-breaking combination of space, style and performance, this is no ordinary wagon.

With a direct injection, turbocharged horizontally-opposed four cylinder Boxer engine combined with Symmetrical All-Wheel Drive and loads of high tech features, the Levorg Sportswagon gives you big value.

It looks good too, with a redesigned front end completing the Levorg's sleek European styling. Plus – every Levorg Sportswagon has achieved the maximum 5 star ANCAP<sup>1</sup> safety rating, with clever collision protection and advanced proactive safety technologies.

This is the performance car to do what you love, with those you love.

Turbocharge your everyday.  
Find out more at [subaru.com.au/levorg](http://subaru.com.au/levorg)

1. The Australasian New Car Assessment Program (ANCAP) gives consumers consistent information on the level of occupant protection provided by vehicles in serious front and side crashes.





Levorg 1.6 GT

## one fun family wagon

Subaru's brand new Levorg 1.6 GT packs incredible value into a stunning Sportswagon. Great driving dynamics, a 1.6 litre turbocharged Boxer engine and 6.2" touchscreen infotainment unit – it's always a joyride.

Features include dual zone air-conditioning, 17" alloy wheels, rear view reverse camera, dusk-sensing headlights, rain-sensing front wipers, heated and power-folding door mirrors, smart key and push-start ignition. Subaru's award-winning EyeSight® Driver Assist technology also comes standard, giving you a second pair of eyes on the road ahead.

### Levorg 1.6 GT features

#### Performance

- + 1.6-litre Direct Injection turbocharged horizontally-opposed Boxer engine
- + Lineartronic™ CVT transmission
- + Maximum power output: 125kW@4800-5600rpm
- + Maximum torque: 250Nm@1800-4800rpm
- + SI-Drive – 2 modes

#### Interior

- + Air-conditioning – dual zone climate control
- + Cloth seat trim – black
- + Leather<sup>1</sup> steering wheel and gear shift
- + Silver stitching
- + Manual seat height lifter – driver
- + 40/20/40 split folding rear seats
- + One touch lane change indicator
- + One touch electric folding rear seats
- + Reclining rear seat
- + Retractable cargo blind

- + Smart key with push-start ignition
- + Sports pedals

#### Exterior

- + 17" alloy wheels
- + Rear spoiler
- + Self-levelling LED headlights auto off (dusk-sensing)
- + Front LED fog lights
- + Bonnet scoop
- + Dual tail pipes
- + Door mirrors with indicators – heated and power-folding
- + Shark fin antenna

#### Entertainment / technology

- + Multi-Function Display unit (MFD)
- + Integrated infotainment system with 6.2" touchscreen

- + Bluetooth<sup>®2</sup> wireless technology
- + Rear view reverse camera
- + Auxiliary jack
- + USB connection
- + USB charge port (x4) – 2 in centre console, 2 in rear
- + Multi-Information Display unit (MID)
- + EyeSight<sup>®</sup> Driver Assist system featuring:
  - + Adaptive Cruise Control
  - + Brake Light Recognition
  - + Lane Departure Warning
  - + Lane Keep Assist
  - + Lane Sway Warning
  - + Lead Vehicle Start Alert
  - + Pre-Collision Brake Assist
  - + Pre-Collision Braking System
  - + Pre-Collision Steering Assist
  - + Pre-Collision Throttle Management

1. Some parts of the seating or trim are not full natural leather. 2. Bluetooth<sup>®</sup> is a registered trademark of Bluetooth SIG Inc. System operation ability is subject to Bluetooth<sup>®</sup> wireless technology specification of individual device.



# everyday even more epic

The Subaru Levorg 1.6 GT Premium makes every day even more epic with an electric sunroof, smart rear view mirror, a larger 7" infotainment unit and satellite navigation. Turbocharge your comfort with heated leather<sup>1</sup> sports bucket seats in the front and an 8-way power adjusted driver's seat, with electric lumbar support adjustment.

Bilstein<sup>®</sup> suspension delivers incredible handling, while Subaru's Vision Assist adds Blind Spot Monitors, Lane Change Assist, Rear Cross Traffic Alert and more.

## Levorg 1.6 GT Premium features

### Performance

- + 1.6-litre Direct Injection turbocharged horizontally-opposed Boxer engine
- + Lineartronic™ CVT transmission
- + Maximum power output: 125kW@4800-5600rpm
- + Maximum torque: 250Nm@1800-4800rpm
- + Bilstein<sup>®</sup> sports suspension
- + SI-Drive – 2 modes

### Interior

- + Air-conditioning – dual zone climate control
- + Sports bucket seats – driver and front passenger
- + Leather<sup>1</sup> seat trim – black
- + Leather<sup>1</sup> steering wheel and gear shift
- + Blue stitching
- + 8-way power seat with dual memory – driver
- + 40/20/40 split folding rear seats
- + Smart key with push-start ignition
- + Auto-dimming rear view mirror
- + Heated front seats
- + One touch lane change indicator

- + One touch electric folding rear seats
- + Electric lumbar support – driver
- + Reclining rear seat
- + Retractable cargo blind
- + Sports pedals

### Exterior

- + 18" alloy wheels
- + Self-levelling LED headlights with auto off (dusk-sensing)
- + Front LED fog lights
- + Electric sunroof
- + Door mirrors with indicators – heated and power-folding
- + Rain-sensing front wipers with de-icer

### + Entertainment / technology

- + Multi-Function Display unit (MFD)
- + Integrated infotainment system with 7" touchscreen
- + Satellite navigation
- + Bluetooth<sup>®2</sup> wireless technology

- + Rear view reverse camera
- + Auxiliary jack
- + USB connections (x2)
- + Vision Assist featuring:
  - + Blind Spot Monitor (BSM)
  - + EyeSight<sup>®</sup> Assist Monitor
  - + Front View Monitor (FVM)
  - + High Beam Assist (HBA)
  - + Lane Change Assist (LCA)
  - + Rear Cross Traffic Alert (RCTA)
  - + Side View Monitor (SVM)
- + EyeSight<sup>®</sup> Driver Assist system featuring:
  - + Adaptive Cruise Control
  - + Brake Light Recognition
  - + Lane Departure Warning
  - + Lane Keep Assist
  - + Lane Sway Warning
  - + Lead Vehicle Start Alert
  - + Pre-Collision Brake Assist
  - + Pre-Collision Braking System
  - + Pre-Collision Steering Assist
  - + Pre-Collision Throttle Management

Everyday even more epic. Explore the range at [subaru.com.au/levorg](http://subaru.com.au/levorg)

1. Some parts of the seating or trim are not full natural leather. 2. Bluetooth<sup>®</sup> is a registered trademark of Bluetooth SIG Inc. System operation ability is subject to Bluetooth<sup>®</sup> wireless technology specification of individual device.



Levorg 1.6 GT Premium





Levorg 2.0 GT-S

## do more power

The Subaru Levorg 2.0 GT-S boasts 197kW of turbocharged power and Active Torque Vectoring technology, which uses the braking system to deliver vice-like grip through corners.

Choose from three exhilarating driving modes to turbocharge every journey: Intelligent (I) mode for everyday driving, Sport (S) mode for enhanced acceleration and Sport Sharp (S#) mode for a truly exhilarating drive.

### Levorg 2.0 GT-S features

#### Performance

- + 2.0-litre Direct Injection turbocharged horizontally-opposed Boxer engine
- + Lineartronic™ CVT transmission
- + Maximum power output: 197kW@5600rpm
- + Maximum torque: 350Nm@2400-5200rpm
- + Bilstein® sports suspension
- + SI-Drive – 3 modes

#### Interior

- + Air-conditioning – dual zone climate control
- + Sports bucket seats – driver and front passenger
- + Leather<sup>1</sup> seat trim - choice of black or bright pearl
- + Leather<sup>1</sup> steering wheel and gear shift
- + Blue stitching
- + 8-way power seat with dual memory – driver
- + 40/20/40 split folding rear seats
- + Smart key with push-start ignition
- + Auto-dimming rear view mirror
- + Heated front seats

- + One touch lane change indicator
- + One touch electric folding rear seats
- + Electric lumbar support – driver
- + Reclining rear seat
- + Retractable cargo blind
- + Sports pedals

#### Exterior

- + 18" alloy wheels
- + Self-levelling LED headlights with auto off (dusk-sensing)
- + Front LED fog lights
- + Electric sunroof
- + Door mirrors with indicators – heated and power-folding
- + Rain-sensing front wipers with de-icer

#### Entertainment / technology

- + Multi-Function Display unit (MFD)
- + Integrated infotainment system with 7" touchscreen
- + Satellite navigation

- + Bluetooth<sup>®2</sup> wireless technology
- + Rear view reverse camera
- + Auxiliary jack
- + USB connections (x2)
- + Vision Assist featuring:
  - + Blind Spot Monitor (BSM)
  - + EyeSight<sup>®</sup> Assist Monitor
  - + Front View Monitor (FVM)
  - + High Beam Assist (HBA)
  - + Lane Change Assist (LCA)
  - + Rear Cross Traffic Alert (RCTA)
  - + Side View Monitor (SVM)
- + EyeSight<sup>®</sup> Driver Assist system featuring:
  - + Adaptive Cruise Control
  - + Brake Light Recognition
  - + Lane Departure Warning
  - + Lane Keep Assist
  - + Lane Sway Warning
  - + Lead Vehicle Start Alert
  - + Pre-Collision Brake Assist
  - + Pre-Collision Braking System
  - + Pre-Collision Steering Assist
  - + Pre-Collision Throttle Management

Do more power.  
Explore the range at [subaru.com.au/levorg](http://subaru.com.au/levorg)

1. Some parts of the seating or trim are not full natural leather. 2. Bluetooth<sup>®</sup> is a registered trademark of Bluetooth SIG Inc. System operation ability is subject to Bluetooth<sup>®</sup> wireless technology specification of individual device.

# do the ultimate getaway car

The Subaru Levorg 2.0 STI Sport means full on fun, combining 197kW of turbocharged power with specially tuned Bilstein® suspension. It adds a range of exclusive features from Subaru Tecnica International (STI), Subaru's specialist motorsport division that develops performance-tuned handling and adrenaline-charged styling.

Amp up the attitude with larger exhaust pipe tips, red interior stitching, and an exclusive sports kit with 18" alloy wheels, front bumper and front grille.

## Levorg 2.0 STI Sport features

### Performance

- + 2.0-litre Direct Injection turbocharged horizontally-opposed Boxer engine
- + Lineartronic™ CVT transmission
- + Maximum power output: 197kW@5600rpm
- + Maximum torque: 350Nm@2400-5200rpm
- + Bilstein® sports suspension with STI coil springs
- + SI-Drive – 3 modes

### Interior

- + Air-conditioning – dual zone climate control
- + Sports bucket seats – driver and front passenger
- + Leather<sup>1</sup> seat trim – maroon and black
- + Leather<sup>1</sup> steering wheel and gear shift
- + Red stitching
- + 8-way power seat with dual memory – driver
- + 40/20/40 split folding rear seats
- + Smart key with push-start ignition
- + Auto-dimming rear view mirror
- + Heated front seats
- + One touch lane change indicator
- + One touch electric folding rear seats

- + Electric lumbar support – driver
- + Reclining rear seat
- + Retractable cargo blind
- + Sports pedals

### Exterior

- + 18" alloy wheels – exclusive design
- + Self-levelling LED headlights with auto off (dusk-sensing)
- + Front LED fog lights
- + Electric sunroof
- + Exclusive front bumper
- + Door mirrors with indicators
- + Door mirrors with indicators – heated and power-folding
- + Rain-sensing front wipers with de-icer
- + STI badge – front and rear

### Entertainment / technology

- + Multi-Function Display unit (MFD)
- + Integrated infotainment system with 7" touchscreen
- + Satellite navigation

- + Bluetooth<sup>®2</sup> wireless technology
- + Rear view reverse camera
- + Auxiliary jack
- + USB connections (x2)
- + Vision Assist featuring:
  - + Blind Spot Monitor (BSM)
  - + EyeSight<sup>®</sup> Assist Monitor
  - + Front View Monitor (FVM)
  - + High Beam Assist (HBA)
  - + Lane Change Assist (LCA)
  - + Rear Cross Traffic Alert (RCTA)
  - + Side View Monitor (SVM)
- + EyeSight<sup>®</sup> Driver Assist system featuring:
  - + Adaptive Cruise Control
  - + Brake Light Recognition
  - + Lane Departure Warning
  - + Lane Keep Assist
  - + Lane Sway Warning
  - + Lead Vehicle Start Alert
  - + Pre-Collision Brake Assist
  - + Pre-Collision Braking System
  - + Pre-Collision Steering Assist
  - + Pre-Collision Throttle Management



Do the ultimate getaway car.  
Explore the range at [subaru.com.au/levorg](http://subaru.com.au/levorg)

1. Some parts of the seating or trim are not full natural leather. 2. Bluetooth<sup>®</sup> is a registered trademark of Bluetooth SIG Inc. System operation ability is subject to Bluetooth<sup>®</sup> wireless technology specification of individual device.

Levorg 2.0 STI Sport



# turbocharged luxury

Subaru's Levorg Sportswagon packs more into everyday – driving tech, luxury and legroom – with plenty of space left over. Not just a high performance model, it's designed for comfort: dual zone climate control air-con, electric lumbar support (on every variant except 1.6 GT) and extra legroom.

A large touchscreen infotainment unit keeps you entertained and connected, puts music and handsfree calls at your fingertips and pumps it through six speakers. The leather steering wheel with audio, EyeSight® and Bluetooth®¹ controls puts you well and truly in the driver's seat.



**Infotainment system**  
Levorg 1.6 GT



**Push-start ignition**  
All Levorg variants



**Heated front seats**  
Levorg 1.6 GT Premium,  
2.0 GT-S and 2.0 STI Sport



**USB charge port - rear (x2)**  
All Levorg variants

1. Bluetooth® is a registered trademark of Bluetooth SIG Inc. System operation ability is subject to Bluetooth® wireless technology specification of individual device.



**Levorg 2.0 GT-S**

# be inspired

## Interior

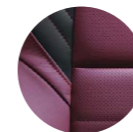
On the inside Levorg 1.6 GT features black cloth. A choice of sumptuous black or bright pearl leather¹ is available on 1.6 GT Premium and 2.0 GT-S. Maroon and black leather¹ is standard on the 2.0 STI Sport.



**Leather Black**



**Leather Bright Pearl**



**Leather Maroon and Black**



**Cloth Black**

## Exterior

The colour you choose for your Subaru makes a bold statement about who you are. So we've made sure you've got lots of ways to express yourself – with a wide range of colours to make your Subaru more... you.



**Crystal White Pearl**



**Lapis Blue Pearl**



**Dark Grey Metallic**



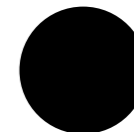
**Ice Silver Metallic**



**Storm Grey Metallic**



**Pure Red**



**Crystal Black Silica**



**WR Blue Pearl (2.0 STI Sport only)**

1. Some parts of the seating or trim are not full natural leather.

Note: Paint colours are representative only and subject to variation due to the printing process.

# why Levorg?

## Symmetrical force of power

### Our All-Wheel Drive philosophy

Greater balance and control. That's the confidence you get from our unique Symmetrical All-Wheel Drive System, which delivers the drive distribution to all four wheels, all the time. Every Subaru Levorg has an innate sense of balance from the ground up, thanks to a near perfect symmetrical layout.

## Boxing clever

### Our famous Subaru Boxer engine

While most engines stand vertically, ours lay flat. The famous Subaru Boxer engine delivers handling like no other engine can. Sitting horizontally in the engine bay, it moves like a boxer's fists with a punch and counterpunch action. Lightweight, low and flat, it makes for perfect balance and a much lower centre of gravity. It creates less noise and vibration too. All of this means better on-road handling for you. More stability. More performance. More fun. And a more confident drive.

## DataDotDNA®

Every Subaru is fitted with advanced engine immobilisers and the DataDotDNA®<sup>1</sup> Theft Deterrent System. Microscopic dots are laser-etched with each vehicle's unique Vehicle Identification Number – making it a less attractive target for thieves.

## Three Year Rebate on Theft Insurance Excess

DataDot Technology (Australia) Pty Ltd will pay your theft insurance excess<sup>2</sup> (up to a maximum of \$800 including GST) should your new Subaru be stolen and not recovered within 45 days despite the presence of DataDotDNA®<sup>1</sup> and warning labels.

## Finest safety

### 5 star ANCAP safety across the range

With spirit, quality and imagination comes some serious safety innovation. We want every Subaru to be amongst the safest cars on the road. Engineered full of cutting-edge technologies and the most intelligent design features. It's not a Subaru unless it carries the maximum 5 star ANCAP<sup>3</sup> safety rating.

## Eyes in the back of your head

### Rear view reverse camera

Manoeuvring back into a tight side street? Family driveway littered with toys? Reverse with confidence, thanks to our rear view reverse camera technology. The rear view reverse camera is like having eyes in the back of your head. This greatly improves your visibility and reduces the risk of bumps and scrapes. A rear view reverse camera is standard across the Levorg range.

## Yet another world first

### Lineartronic™ CVT

Pushing innovation beyond the bounds, we introduced an automatic transmission called Lineartronic™ CVT (Continuously Variable Transmission). And it's the reason our automatic models drive so smooth. It's the world's first longitudinally mounted system for AWD vehicles. Unlike a conventional automatic transmission – which uses fixed gear ratios – our Lineartronic™ CVT provides infinite variability between the highest and lowest available gears. So you now experience a smooth gear change, into any optimum gear for that moment. Lineartronic™ CVT is standard on all Subaru Levorg variants.

## Intelligently driven

### Subaru Intelligent Drive

Heading to the shops? Taking on the Great Ocean Road? Each situation deserves a distinctive driving mode, so we crafted Subaru Intelligent Drive (SI-Drive) technology to do just that. Switch from smart, to sporty to even sportier. Intelligent (I) mode – perfect for everyday driving, Sport (S) mode – for enhanced acceleration and all-round sporty performance and on the 2.0 GT-S and 2.0 STI Sport variants, Sport Sharp (S#) mode – for a truly thrilling drive.

## We're looking out for you

### EyeSight® Driver Assist

We were the first car company to exclusively use stereo camera technology to detect objects in our vehicles path. A sign of our future-thinking and our commitment to quality, technology and safety, EyeSight® Driver Assist is like your second pair of eyes, spotting potentially dangerous situations. If EyeSight® detects anything that might be of danger, it warns you audibly, urging you to take action and brake. EyeSight® Driver Assist comes standard on all Levorg variants.

## Clever thinking

### Vision Assist

Imagine if your side mirrors could alert you when there's something in your blind spot. Or if your high beams could automatically switch to low beam, when approaching oncoming traffic at night. We made all this happen – and more – with Subaru's Vision Assist. Our suite of proactive safety technologies including Side View Monitor, Blind Spot Monitor, Rear Cross Traffic Alert, Lane Change Assist, High Beam Assist and Front View Monitor are always at work to help you feel safer on the road. Subaru's Vision Assist technologies are standard on the Levorg 1.6 GT Premium, 2.0 GT-S and 2.0 STI Sport.

1. DataDotDNA® is a theft deterrent not a theft prevention mechanism. 2. Vehicles must be registered, comprehensively insured and less than 3 years old. DTA must receive a claim within 45 days of the theft. Terms and conditions apply. 3. The Australasian New Car Assessment Program (ANCAP) gives consumers consistent information on the level of occupant protection provided by vehicles in serious front and side crashes.



do™

do

do



do

Levorg 2.0 STI Sport



## Levorg specifications<sup>1</sup>

MODEL		1.6 GT	1.6 GT Premium	2.0 GT-S	2.0 STI Sport
		<b>Wagon</b>	<b>Wagon</b>	<b>Wagon</b>	<b>Wagon</b>
<b>Transmission</b>					
Lineartronic™ CVT		•	•	•	•
<b>Engine</b>					
Engine type		Direct Injection turbocharged horizontally-opposed Boxer 4-cylinder, petrol engine			
Valve mechanism		DOHC with Dual AVCS			
Bore x stroke	mm	78.8 x 82.0		86.0 x 86.0	
Capacity	cc	1599		1998	
Compression ratio		11.0:1		10.6:1	
Fuel tank capacity	litres	60			
Fuel system		Direct injection			
Fuel requirement (min)	RON	95			
<b>Performance<sup>2</sup></b>					
Maximum power output (DIN)	kW/rpm	125kW@4800-5600rpm		197kW@5600rpm	
Maximum torque (DIN)	Nm/rpm	250Nm@1800-4800rpm		350Nm@2400-5200rpm	
Acceleration 0 – 100 km/h	seconds	8.9		6.6	
Electronic Throttle Control system (ETC)		Drive-by-wire			
Fuel consumption (ADR 81/02) For comparison purposes only. Real world results may vary <sup>3</sup> :					
	combined	l/100km	7.4		8.7
	urban	l/100km	8.8		11.8
	extra urban	l/100km	6.5		6.9
CO <sub>2</sub> emissions (ADR 81/02)	combined	(g/km)	169		201
<b>Symmetrical All-Wheel Drive</b>					
Type	Auto	Active Torque Split		Variable Torque Distribution	
<b>Transmission</b>					
Gear ratio	1st	3.560		3.505 (S#:3.505)	
	2nd	2.255		2.238 (S#:2.405)	
	3rd	1.655		1.641 (S#:1.855)	
	4th	1.201		1.194 (S#:1.544)	
	5th	0.887		0.880 (S#:1.258)	
	6th	0.616		0.611 (S#:1.032)	
	7th			(S# 0.856)	
	8th			(S# 0.716)	

1. Subaru Australia reserves the right to change mechanical specification and equipment levels without notice. 2. All performance data measured using 95RON as required by Australian Design Rule 81/02. Vehicles tested in accordance with ADR 81/02. Acceleration test performed under controlled conditions. 3. Fuel consumption figures quoted are measured in accordance with Australian Design Rule 81/02 and are for comparison purposes only. Real world results may vary based on individual driving circumstances e.g. traffic conditions, driving style, vehicle conditions, fuel quality, climatic conditions etc.

## Levorg specifications<sup>1</sup>

MODEL		1.6 GT	1.6 GT Premium	2.0 GT-S	2.0 STI Sport
		<b>Wagon</b>	<b>Wagon</b>	<b>Wagon</b>	<b>Wagon</b>
Gear ratio – reverse		3.667		2.345	
Final reduction gear ratio		3.900			
<b>Steering</b>					
Steering		Electric power assistance rack and pinion			
Minimum turning circle	m	10.8			
<b>Suspension</b>					
Type	Front	MacPherson strut, lower L-arms, coil springs, stabiliser bar	Bilstein® MacPherson strut, lower L-arms, coil springs, stabiliser bar		
	Rear	Double wishbone, coil springs, stabiliser bar	Bilstein® damper, coil springs, double wishbone, stabiliser bar		
<b>Brakes</b>					
Type	Front	Ventilated disc brakes			
	Rear	Ventilated disc brakes			
Brake booster type		Tandem			
ABS		4-channel, 4-sensor ABS with Electronic Brakeforce Distribution and VDC			
<b>Wheels and Tyres</b>					
Tyre manufacturer		Dunlop SP Sport Maxx 050			
Tyres (width, profile, size, load index and speed rating)		215/50R17 91V	225/45 R18 91W		
Rim size		17x7J	18x7.5J		
Wheels		17"	18"		
Spare wheel		Spacesaver wheel			
<b>Measurement</b>					
Overall length	mm	4690			
Overall width	mm	1780			
Overall height	mm	1485	1490		
Wheel base	mm	2650			
Front track	mm	1530			
Rear track	mm	1540			
Minimum ground clearance <sup>2</sup>	mm	130	135		
Cargo volume – rear seat up/down	litres	489/911 (1413 to ceiling)			
Seating capacity		5			
Kerb weight <sup>3</sup>	kg	1579	1620	1622	1631
Tare mass <sup>3</sup>	kg	1539	1580	1582	1591
<b>Towing</b>					
Towing without/with trailer brakes	kg	750/800	750/800	750/1500	750/1200
Maximum tow ball down load	kg	80	80	150	120

1. Subaru Australia reserves the right to change mechanical specification and equipment levels without notice. 2. Ground clearance at kerb weight. 3. Vehicle kerb weight and tare mass varies according to the types of optional equipment included.



## Levorg features<sup>1</sup>

MODEL	1.6 GT	1.6 GT Premium	2.0 GT-S	2.0 STI Sport
<b>Transmission</b>				
Lineartronic™ CVT	•	•	•	•
<b>Safety Rating</b>				
5 star ANCAP <sup>2</sup> safety rating (maximum 5)	•	•	•	•
<b>Collision Avoidance</b>				
Symmetrical All-Wheel Drive (SAWD)	•	•	•	•
Vehicle Dynamics Control system (VDC) featuring:	•	•	•	•
Electronic Stability Control (ESC)	•	•	•	•
Anti-lock Braking System (ABS)	•	•	•	•
Electronic Brakeforce Distribution (EBD)	•	•	•	•
Brake Assist	•	•	•	•
Traction Control System (TCS)	•	•	•	•
Active Torque Vectoring System	•	•	•	•
4-wheel disc brakes	•	•	•	•
Auto vehicle hold	•	•	•	•
Electronic parking brake	•	•	•	•
Rear view reverse camera	•	•	•	•
Vision Assist featuring:		•	•	•
Blind Spot Monitor (BSM)		•	•	•
EyeSight® Assist Monitor		•	•	•
Front View Monitor (FVM)		•	•	•
High Beam Assist (HBA)		•	•	•
Lane Change Assist (LCA)		•	•	•
Rear Cross Traffic Alert (RCTA)		•	•	•
Side View Monitor (SVM)		•	•	•
<b>Collision Protection</b>				
SRS <sup>3</sup> airbags – dual front, dual front side and curtain	•	•	•	•
SRS <sup>3</sup> airbags – knee airbag (driver only)	•	•	•	•
Front seat belts with pretensioners and load limiters	•	•	•	•
3 point A/ELR rear seat belts	•	•	•	•
Height adjustable seat belt anchors – driver and front passenger	•	•	•	•
Seat belt warning lights – all seats	•	•	•	•
Rear seat headrests for 3 seating positions	•	•	•	•
Height and angle adjustable front seat headrests	•	•	•	•
Height adjustable rear seat headrests	•	•	•	•

1. Subaru Australia reserves the right to change mechanical specification and equipment levels without notice. 2. The Australasian New Car Assessment Program (ANCAP) gives consumers consistent information on the level of occupant protection provided by vehicles in serious front and side crashes. 3. SRS: Supplemental Restraint System. Effective when used in conjunction with seat belts.

## Levorg features<sup>1</sup>

MODEL	1.6 GT	1.6 GT Premium	2.0 GT-S	2.0 STI Sport
<b>Child Safety</b>				
Child seat anchor points (x3)	•	•	•	•
ISOFIX anchor points (x2)	•	•	•	•
Rear door child locks	•	•	•	•
<b>Intelligent Driving Dynamics</b>				
Auto Stop Start	•	•		
Bilstein® suspension			•	With STI coil springs
Electronic Throttle Control system (ETC)	•	•	•	•
Subaru Intelligent Drive (SI-Drive):	•	•	•	•
Intelligent (I) mode	•	•	•	•
Sport (S) mode		•	•	•
Sport Sharp (S#) mode			•	•
EyeSight® Driver Assist system featuring:	•	•	•	•
Adaptive Cruise Control	•	•	•	•
Brake Light Recognition	•	•	•	•
Lane Departure Warning	•	•	•	•
Lane Keep Assist	•	•	•	•
Lane Sway Warning	•	•	•	•
Lead Vehicle Start Alert	•	•	•	•
Pre-Collision Brake Assist	•	•	•	•
Pre-Collision Braking System	•	•	•	•
Pre-Collision Steering Assist	•	•	•	•
Pre-Collision Throttle Management	•	•	•	•
<b>Chassis and Mechanism</b>				
Front and rear stabiliser	•	•	•	•
<b>Exterior</b>				
Body coloured mirrors and door handles	•	Silver mirrors	Silver mirrors	Silver mirrors
Bonnet scoop	•	•	•	•
Bonnet with gas struts	•	•	•	•
Chrome type rear garnish and window sills	•	•	•	•
Detachable module type windscreen wipers	•	•	•	•
Door mirrors with indicators – heated and power-folding	•	•	•	•
Dual tail pipes with covers	•	•	•	With STI stamp
Electric sunroof		•	•	•
Engine cover	•	•	•	•

1. Subaru Australia reserves the right to change mechanical specification and equipment levels without notice.



## Levorg features<sup>1</sup>

MODEL	1.6 GT	1.6 GT Premium	2.0 GT-S	2.0 STI Sport
Front and rear wipers	•	With front de-icer	With front de-icer	With front de-icer
Rear spoiler	•	•	•	•
Roof carrier brackets	•	•	•	•
Shark fin antenna	•	•	•	•
Side sill skirts	•	•	•	•
Silver brake calipers	•	•	•	•
17" alloy wheels	•			
18" alloy wheels		•	•	•
<b>Lighting – Exterior</b>				
Daytime running lights – LED	•	•	•	•
Front fog lights – LED	•	•	•	•
Headlights – self-levelling LED headlights with auto off	•	•	•	•
Headlights – dusk-sensing	•	•	•	•
Rear bumper reflectors	•	•	•	•
Rear fog light	•	•	•	•
Rear LED combination lights	•	•	•	•
Rear LED stoplight	•	•	•	•
Steering Responsive Headlights (SRH)	•	•	•	•
Welcome lighting	•	•	•	•
<b>Lighting – Interior</b>				
Cabin and cargo area lights	•	•	•	•
Map lights (x2)	•	•	•	•
<b>Air-conditioning</b>				
Air-conditioning – dual zone climate control	•	•	•	•
Anti-dust filter	•	•	•	•
Front and side demisters	•	•	•	•
Floor heater ducts for rear passengers	•	•	•	•
Rear windscreen demister – electric with timer	•	•	•	•
<b>Security</b>				
DataDotDNA <sup>®2</sup> security system	•	•	•	•
Immobiliser security system	•	•	•	•
<b>Instrumentation and Controls</b>				
Adjustable steering wheel – height and telescopic	•	•	•	•
Electroluminescent gauges with colour MID	•	•	•	•
Manual mode	•	•	•	•

1. Subaru Australia reserves the right to change mechanical specification and equipment levels without notice. 2. DataDotDNA<sup>®</sup> is a theft deterrent not a theft prevention mechanism.

## Levorg features<sup>1</sup>

MODEL	1.6 GT	1.6 GT Premium	2.0 GT-S	2.0 STI Sport
One touch lane change indicator	•	•	•	•
Paddle gear shifters	•	•	•	•
Sports pedals	•	•	•	•
Steering wheel controls:	•	•	•	•
Audio	•	•	•	•
Bluetooth <sup>®2</sup>	•	•	•	•
EyeSight <sup>®</sup>	•	•	•	•
MID	•	•	•	•
SI-Drive	•	•	•	•
<b>Multi-Function Displays</b>				
Multi-Information Display unit (MID) featuring:	•	•	•	•
3.5" LCD screen	•	•	•	•
Journey information	•	•	•	•
Eco-gauge information	•	•	•	•
EyeSight <sup>®</sup> display	•	•	•	•
Auto Stop Start information	•	•	•	•
SI-Drive display	•	•	•	•
Warning display	•	•	•	•
Digital speedometer	•	•	•	•
Multi-Function Display unit (MFD) featuring:	•	•	•	•
5.9" LCD screen	•	•	•	•
Outside temperature and clock display	•	•	•	•
Journey and fuel economy information	•	•	•	•
Air-conditioning and seat belt display	•	•	•	•
Preventative Safety display	•	•	•	•
Side View Monitor display		•	•	•
Front View Monitor display		•	•	•
Turbo boost pressure display			•	•
MFD visor with stitching		Blue stitching	Blue stitching	Red stitching
Twin trip meter (switchable)	•	•	•	•
<b>Storage</b>				
Cargo hooks	•	•	•	•
Centre console box with sliding armrest	•	•	•	•
Cupholders – centre console (with sliding lid) and rear	•	•	•	•

1. Subaru Australia reserves the right to change mechanical specification and equipment levels without notice. 2. Bluetooth<sup>®</sup> is a registered trademark of Bluetooth SIG Inc. System operation ability is subject to the Bluetooth<sup>®</sup> wireless technology specification of individual's device.

## Levorg features<sup>1</sup>

MODEL	1.6 GT	1.6 GT Premium	2.0 GT-S	2.0 STI Sport
Door pockets with integrated bottle holder – front and rear	•	•	•	•
Front centre tray	•	•	•	•
Pull-out cargo area tie down points	•	•	•	•
Retractable cargo blind	•	•	•	•
Seat back pocket – driver and front passenger side	•	•	•	•
<b>Convenience</b>				
12V/120W power jacks (x2)	•	•	•	•
Auto-dimming rear view mirror		•	•	•
Boot/tailgate unlock on remote central locking keys	•	•	•	•
Sunvisors with illuminated vanity mirrors – driver and front passenger	•	•	•	•
Interior fuel lid lock release	•	•	•	•
Intermittent variable speed front windscreen wipers	•	•	•	•
Power steering and mirrors	•	•	•	•
Power windows – all with auto function	•	•	•	•
Rain-sensing front windscreen wipers	•	•	•	•
Rear seat centre armrest	•	•	•	•
Remote central locking – selective unlock	•	•	•	•
Remote central locking keys (x2)	•	•	•	•
Smart key and push-start ignition	•	•	•	•
Smart rear view mirror		•	•	•
USB charge port – centre console (x2) and rear passengers (x2)	•	•	•	•
<b>Interior Trims</b>				
Carpet trim – black	•	•	•	•
Leather <sup>2</sup> steering wheel and gear shift	With silver stitching	With blue stitching	With blue stitching	With red stitching
Seat trim – black cloth	•			
Seat trim – black leather <sup>2</sup>		•		
Seat trim – choice of black or bright pearl leather <sup>2</sup>			•	
Seat trim – maroon and black leather <sup>2</sup>				•
Shift boot	•	•	•	•
Side sill plates (front) – stainless		With Subaru logo	With Subaru logo	With STI logo
Sports bucket seats – driver and front passenger		With blue stitching	With blue stitching	With red stitching

1. Subaru Australia reserves the right to change mechanical specification and equipment levels without notice. 2. Some parts of the seating or trim are not full natural leather.

## Levorg features<sup>1</sup>

MODEL	1.6 GT	1.6 GT Premium	2.0 GT-S	2.0 STI Sport
<b>Seating Extras</b>				
40/20/40 split folding rear seats	•	•	•	•
8-way power seat with dual memory – driver		•	•	•
Heated seats – driver and front passenger		•	•	•
Electric lumbar support – driver		•	•	•
Manual seat height lifter – driver	•			
One touch electric folding rear seats	•	•	•	•
Reclining rear seat	•	•	•	•
<b>Entertainment</b>				
Integrated infotainment system featuring:	•	•	•	•
Satellite navigation		•	•	•
AM/FM radio	•	•	•	•
Single CD player	•	•	•	•
6 speakers	•	•	•	•
6.2" touchscreen	•			
7" touchscreen		•	•	•
Siri <sup>®2</sup> compatibility		•	•	•
Bluetooth <sup>®3</sup> wireless technology with:	•	•	•	•
Handsfree mobile communication	•	•	•	•
Audio streaming <sup>4</sup>	•	•	•	•
Voice command recognition	•	•	•	•
Auxiliary jack – front centre console	•	•	•	•
USB connection/s	x1	x2	x2	x2
<b>Warranty</b>				
3 Year/Unlimited Km Warranty	•	•	•	•
3 Year/75,000 Km Capped Price Servicing Program <sup>5</sup>	•	•	•	•
12 Month Roadside Assistance Program <sup>6</sup>	•	•	•	•

1. Subaru Australia reserves the right to change mechanical specification and equipment levels without notice. 2. Requires compatible Siri<sup>®</sup> enabled Apple device to be paired with the infotainment system. 3. Bluetooth<sup>®</sup> is a registered trademark of Bluetooth SIG Inc. System operation ability is subject to the Bluetooth<sup>®</sup> wireless technology specification of individual's device. 4. There may be restrictions on features available for certain models that are not fully compliant with AVCRP. 5. Every brand new 2018 Subaru Levorg comes with Subaru's 3 Year/75,000 Kilometre Capped Price Servicing Program. Available at participating Subaru Retailers only and does not apply to rental and some other classes of vehicles. For full Capped Price Servicing Terms and Conditions visit [subaru.com.au/service/pricing/capped-price-servicing](http://subaru.com.au/service/pricing/capped-price-servicing). 6. Terms and conditions apply. For a full list of benefits, visit <https://www.subaru.com.au/owner-experience/benefits/program/roadside>.



# do it your way

Turbocharge your everyday your way, with a huge range of Genuine Subaru Accessories designed to fit your Subaru Levorg Sportswagon perfectly. Style it up, spec it up and pack more in.

From action-packed to packing the back, we've got accessories for everything you'll do with your Subaru Levorg.

- + Styling Tailor your Levorg to your personal fit with a range of stylish interior and exterior options.
- + Protection Protecting your Subaru Levorg is easy, with tailor-made genuine accessories that fit like a glove. Our range of protection accessories will fend off spills, bumps and scrapes.
- + Cargo Rig up your Subaru Levorg with a tow bar package as well as a wide range of quality Thule sport and cargo accessories, bike and kayak mounts.
- + Security, Convenience and Safety Light up your world with our rear tailgate lighting kit. New parents will love our 6-point-harness baby seat which integrates with the Subaru Levorg's ISOFIX anchor points.
- + STI Performance Parts Tweak the performance of Subaru Levorg for that extra edge. Bring out the beast with performance parts for optimum handling and control. Or spiff it up with aerodynamic spoilers and STI ENKEI performance alloy wheels.

Genuine Subaru Accessories are available from your Subaru Retailer, so be sure to ask about the range when buying your new Subaru Levorg.

 To view our complete range of accessories and pricing online visit [subaru.com.au/levorg/accessories](http://subaru.com.au/levorg/accessories)







Levorg 2.0 GT-S



## packs that will inspire you

From action-packed to packing the back, these quality Genuine Subaru Accessory Packs will give you the protection you need and versatility you desire to do more with your Subaru Levorg.

Both stylish and functional, each Accessory Pack has been custom made for a tailored fit to complement your Subaru Levorg and keep it looking good for years to come.

Plus all Genuine Subaru Accessories are protected by our manufacturer's warranty<sup>1</sup>.

### Protection Pack includes:

**a Carpet Mat Set**

Enjoy the comfort with a luxurious Levorg branded quality carpet mat set.

**b Cargo Tray**

Throw all the gear in the back with a heavy duty mat to protect the cargo area from dust and dirt.

**c Cargo Step Panel (Resin)**

Grab your gear and go without worrying about scratching the rear top face of the bumper with a tailored resin panel.

**d Weather Shields**

Sleekly designed and tailored to fit onto each door individually.

### Explorer Pack includes:

Add a Tow Bar to the Protection Pack to squeeze more out of your everyday.

**e Tow Bar**

Hook your toys up to a functional and sturdy tow bar engineered specifically for the Australian market.



1. For full warranty terms and conditions, visit [subaru.com.au/accessories-information/warranty](http://subaru.com.au/accessories-information/warranty)



# do it up

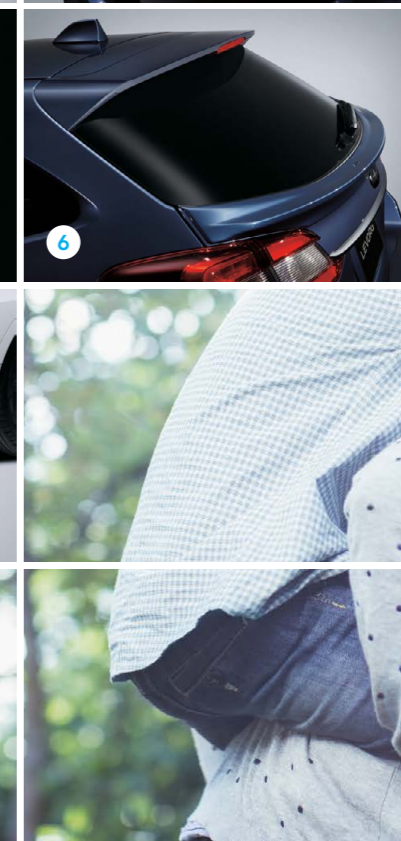
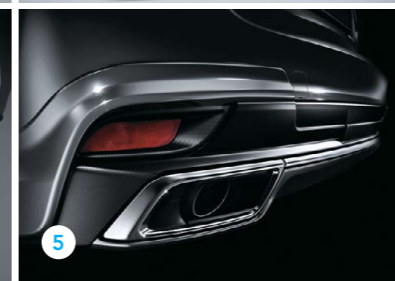
Make your Subaru Levorg a genuine one-off. Splash out with colour and style options to enhance the cabin and highlight the vehicle's sporty exterior lines.

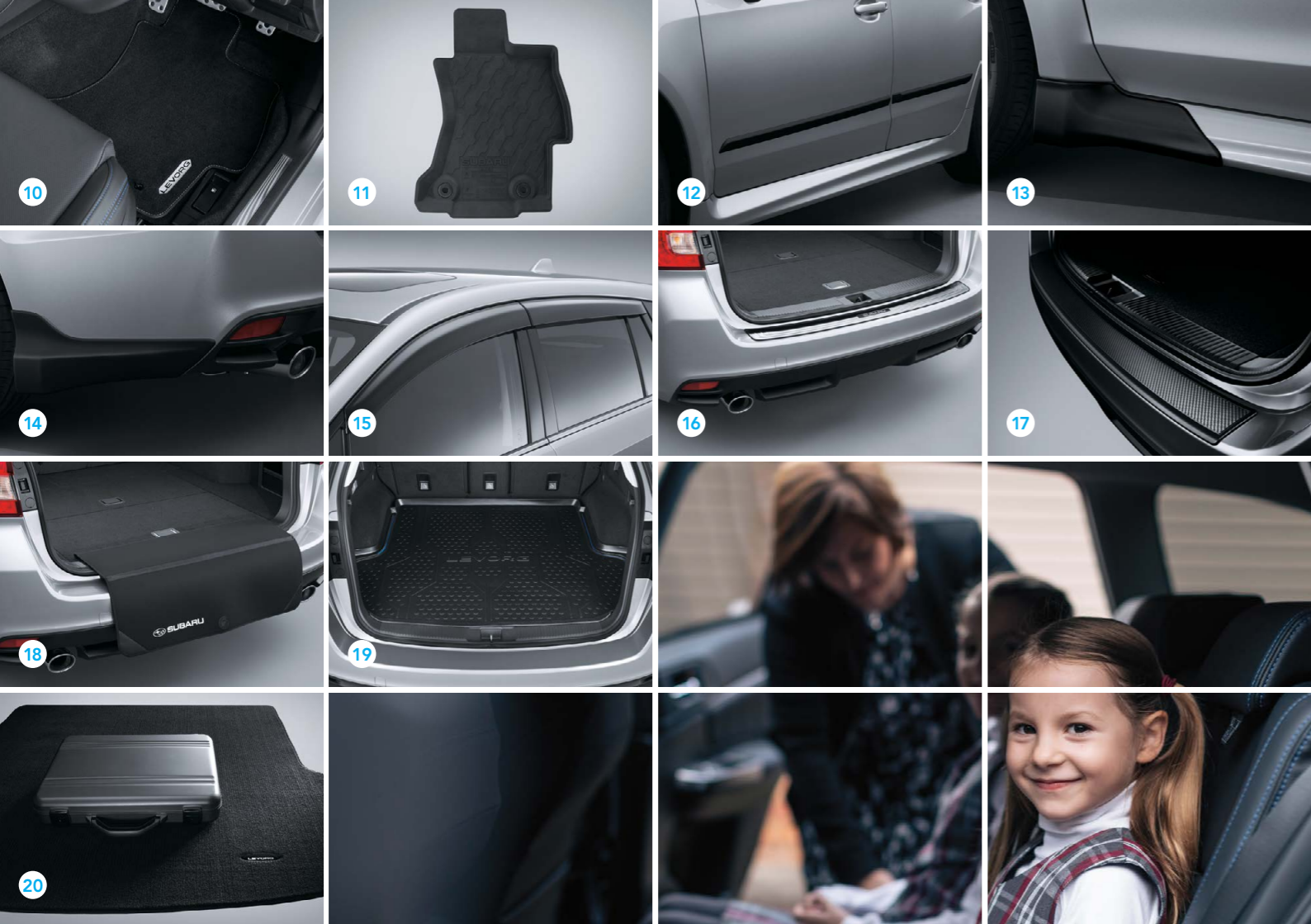
ACCESSORY	Part Number	1.6 GT	1.6 GT Premium	2.0 GT-S	2.0 STI Sport
<b>Styling</b>					
1 Side Sill Plate (Available in Blue (shown) and Red)	E1010VA200	•	•	•	•
2 Alloy Wheel Set 18" (Available in Blue (shown) and Red)	B3110VA600K	•	•	•	•
3 Front Grille (Mesh Type)	J1010VA300##	•	•	•	•
4 Front Spoiler (Unpainted)	E2410VA210NN	•	•	•	•
5 Rear Under Spoiler (Not applicable with Tow Bar)	E5610VA600##	•	•	•	•
6 Waist Spoiler	J1210VA010NN	•	•	•	•
7 Matte Carbon Dash Panel Interior Trim (Available in Blue (shown) and Bordeaux)	J1310VA070	•	•	•	•
8 Side Stripe (Available in Blue (shown), Red, White and Black)	J1210VA300	•	•	•	•
9 Door Mirror Stripe (Available in Blue (shown), Red, White and Black)	J1210VA360	•	•	•	•

## Denotes colour option of your choice.

To view our complete range of accessories and pricing online visit [subaru.com.au/levorg/accessories](http://subaru.com.au/levorg/accessories)

	Not Applicable
•	Applicable





# protect your investment

Get out and do more while protecting your Subaru Levorg from the rough and tumble of daily life. From our cargo tray to our bumper protector, each accessory is tailored for a perfect fit.

ACCESSORY	Part Number	1.6 GT	1.6 GT Premium	2.0 GT-S	2.0 STI Sport
<b>Protection</b>					
10 Carpet Mat Set	J501AVA300	•	•	•	•
11 Rubber Mat Set	J5010VA100	•	•	•	•
12 Body Side Moulding (Non-coloured)	J1010VA600NN	•	•	•	•
13 Aero Mud Guards (Front)	J1010VA001NN	•	•	•	•
14 Aero Mud Guards (Rear)	J1010VA004NN	•	•	•	•
15 Weather Shields	F0010VA000	•	•	•	•
16 Cargo Step Panel (Stainless)	E7710VA000	•	•	•	•
17 Cargo Step Panel (Resin)	E7710VA010	•	•	•	•
18 Bootlip and Bumper Protector	SAT6003	•	•	•	•
<b>Cargo and Tow</b>					
19 Cargo Tray	J515EVA000	•	•	•	•
20 Cargo Mat – carpet	J5010VA350	•	•	•	•

To view our complete range of accessories and pricing online visit [subaru.com.au/levorg/accessories](http://subaru.com.au/levorg/accessories)



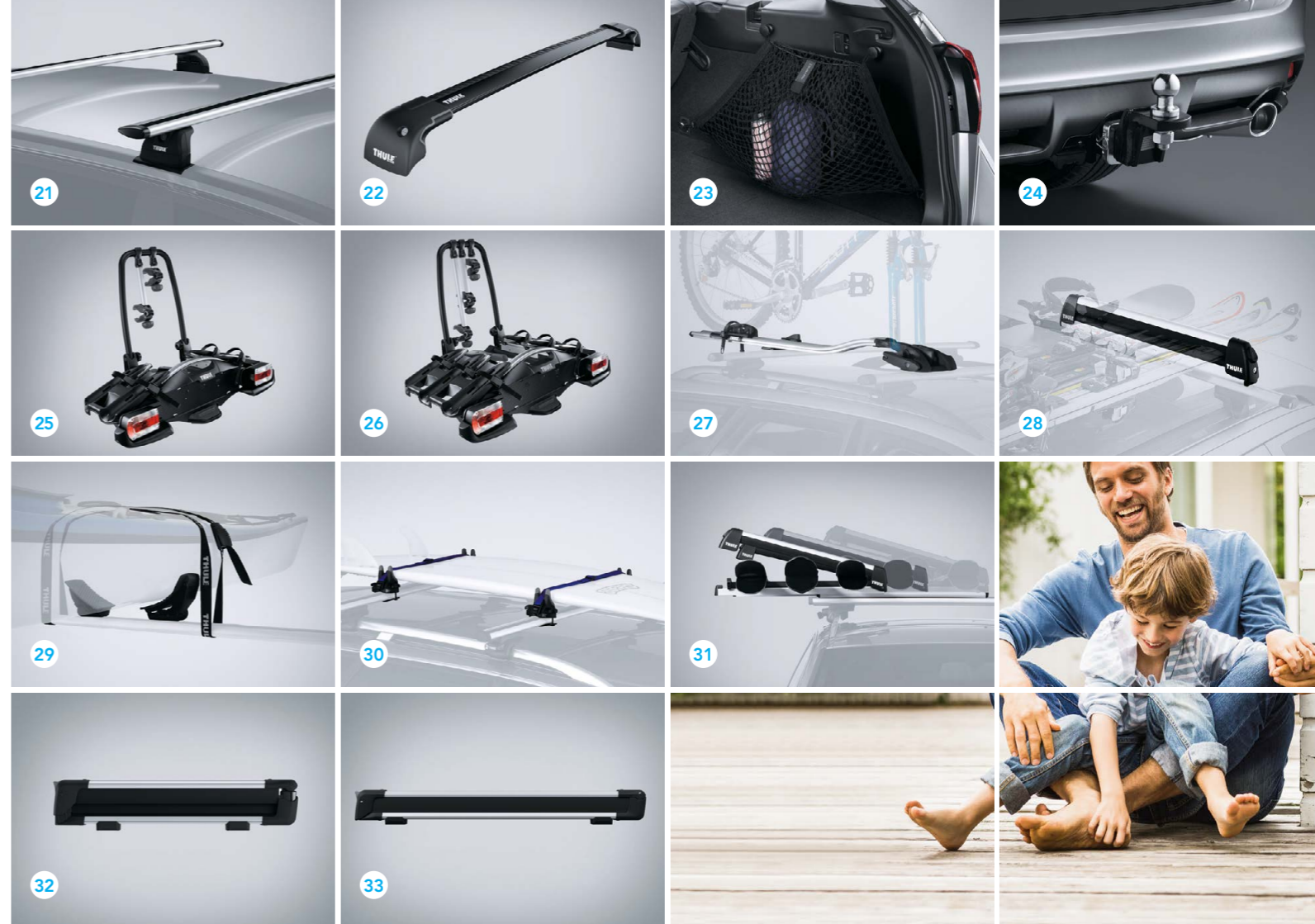
# do all the things you've planned

Tow it, stow it or just pack more into your every day with a wide range of Subaru Levorg compatible cargo options, plus premium Thule sport and cargo carrier accessories.

ACCESSORY	Part Number	1.6 GT	1.6 GT Premium	2.0 GT-S	2.0 STI Sport
<b>Cargo and Tow</b>					
21 Roof Cross Bars	SAT3015	•	•	•	•
22 Roof Cross Bars - Wingbar Edge (Black)	SAT3016	•	•	•	•
23 Cargo Room Net (Side x2)	F551EVA000	•	•	•	•
24 Tow Bar <sup>1</sup>	L101AVA010	•	•	•	•
25 Thule Tow Bar Mounted Bike Carrier (Two Bikes) <sup>2</sup>	SAP925	•	•	•	•
26 Thule Tow Bar Mounted Bike Carrier (Three Bikes) <sup>2</sup>	SAP927	•	•	•	•
<b>Thule Roof Attachments (Roof Cross Bars Required)</b>					
27 Bicycle Holder (Fork Mounted)	SA1042	•	•	•	•
28 Universal Locking Arm	SA1043	•	•	•	•
29 Water Craft Holder	SA1044	•	•	•	•
30 Surfboard Carrier	SA1139	•	•	•	•
31 Xtender 6 Pair Ski Holder	SA1156	•	•	•	•
32 Universal Flat Top Ski Carrier (4 Pair)	SAT8023	•	•	•	•
33 Universal Flat Top Ski Carrier (6 Pair)	SAT8024	•	•	•	•

1. Tow capacity varies for applicable models: 2.0 GT = 1,500 kgs; 2.0 GTSTI = 1,200kgs; 1.6 GT = 800kgs. Rear Under Spoiler (E5610VA600##) not applicable with fitment of Tow Bar.  
2. Fitment of Tow Bar required.

To view our complete range of accessories and pricing online visit [subaru.com.au/levorg/accessories](http://subaru.com.au/levorg/accessories)





ACCESSORY	Part Number	1.6 GT	1.6 GT Premium	2.0 GT-S	2.0 STI Sport
<b>Thule Roof Attachments (Roof Cross Bars Required)</b>					
34	Glide & Set (Kayak Carrier)	SAT9018	•	•	•
35	Paddleboard & Mal Carrier	SAT8016	•	•	•
36	Bicycle Holder Upright (Available in Black (shown) and Silver)	SAT8018	•	•	•
37	Luggage Pod Motion 200 (Silver)	SAT9014	•	•	•
38	Luggage Pod Motion 200 (Black)	SAT9015	•	•	•
39	Luggage Pod Motion 800 (Silver)	SAT5006	•	•	•
40	Luggage Pod Motion 800 (Black)	SAT5007	•	•	•
41	Luggage Pod Touring 100 (Titan Aeroskin) Textured Finish (Small)	SAT5008	•	•	•
42	Luggage Pod Touring 100 (Black Glossy) Smooth Finish (Small)	SAT5008B	•	•	•
43	Go Box	SAT8005	•	•	•
44	Go Pack Set (4 Bags)	SAT8006	•	•	•
45	Side Wheel Step Up	SAT9004	•	•	•

To view our complete range of accessories and pricing online visit [subaru.com.au/levorg/accessories](http://subaru.com.au/levorg/accessories)



# relax, we've thought of everything

From the simplest wheel lock nuts, to a comfortable and secure ISOFIX baby seat, you can be sure we have you covered.

ACCESSORY	Part Number	1.6 GT	1.6 GT Premium	2.0 GT-S	2.0 STI Sport
<b>Security</b>					
46 Wheel Lock Nuts	B327EYA000	•	•	•	•
<b>Convenience and Safety</b>					
47 Round Type Ashtray (Black)	92172AG040	•	•	•	•
48 Rear Tailgate Light	H4610VA010	•	•	•	•
49 Cigarette Lighter	H6710FJ000	•	•	•	•
50 Ash Tray Holder	F601OAG010	•	•	•	•
51 First Aid Kit	PR7670	•	•	•	•
52 Safety Triangle	SAT9007	•	•	•	•
53 Baby Seat – Kompressor Beyond Midnight	SAC7004	•	•	•	•
<b>STI Performance Parts</b>					
54 Wheel Lock Nut Set (Black)	ST28170ST020	•	•	•	•
55 Security Wheel Nut Set	ST28170ST060	•	•	•	•
56 Valve Cap Set	ST28102ST030	•	•	•	•
57 Battery Clamp/Holder	ST82182ST000	•	•	•	•

To view our complete range of accessories and pricing online visit [subaru.com.au/levorg/accessories](http://subaru.com.au/levorg/accessories)



46



47



48



49



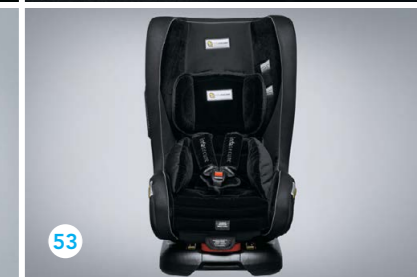
50



51



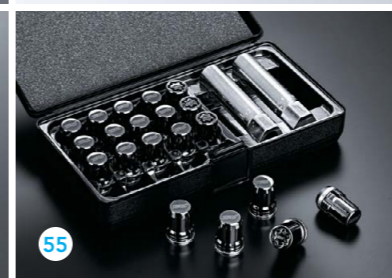
52



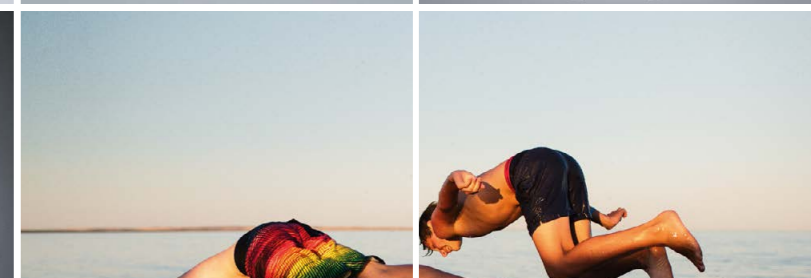
53



54



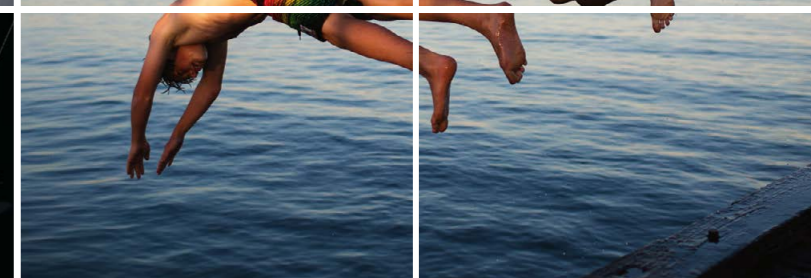
55

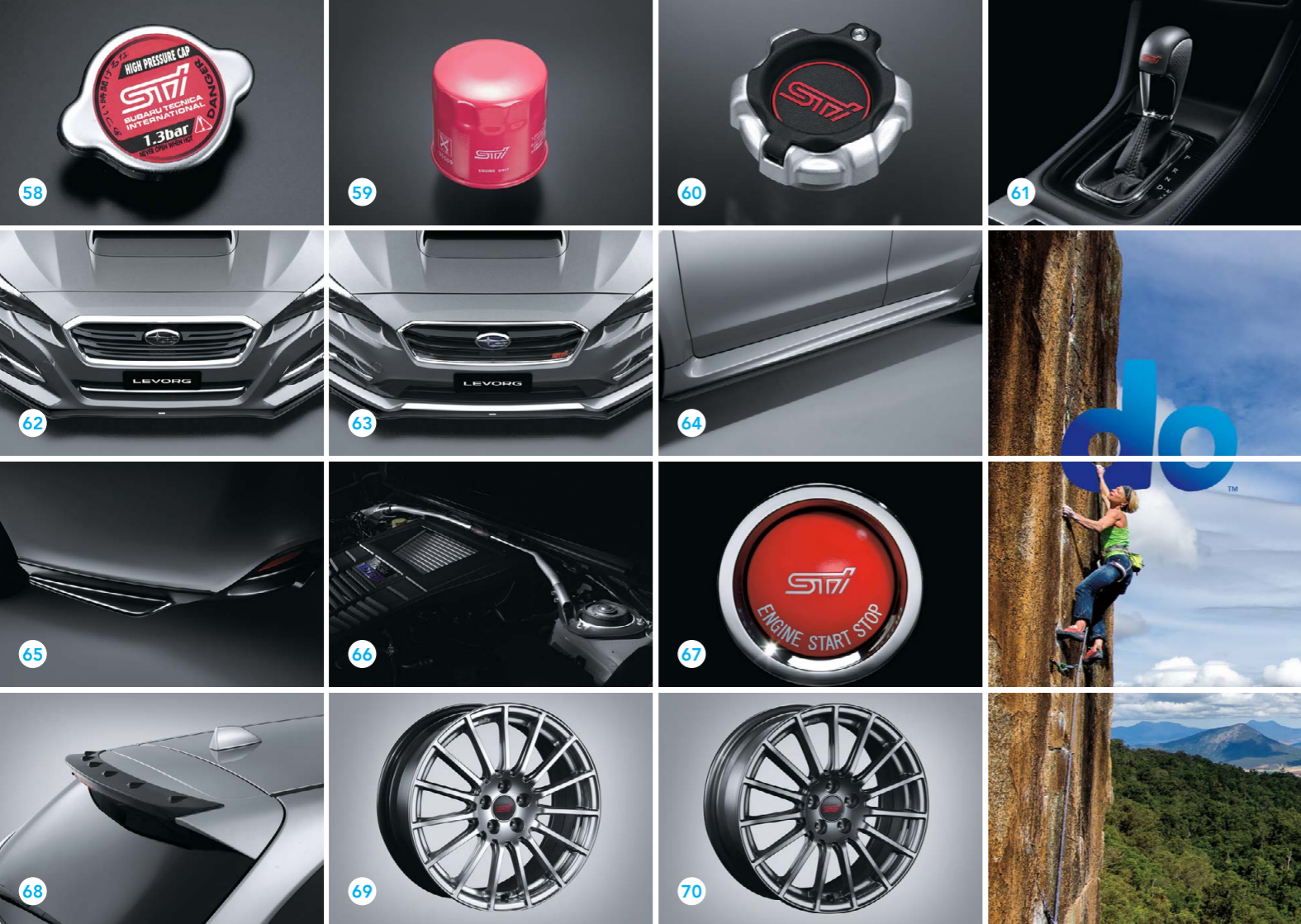


56



57





# kick it into overdrive

Show your allegiance with bold, branded accessories to protect and style your new Subaru Levorg.

ACCESSORY	Part Number	1.6 GT	1.6 GT Premium	2.0 GT-S	2.0 STI Sport
<b>STI Performance Parts</b>					
58 High Pressure Radiator Cap	ST4511355010	•	•	•	•
59 Sports Oil Filter	ST15208ST000	•	•	•	•
60 Oil Cap	ST15257ZR010	•	•	•	•
61 STI Leather Shift Knob (CVT)	C1010SG101	•	•	•	•
62 STI Front Under Spoiler	E2410VA040	•	•	•	
63 STI Front Under Spoiler (WGN STI)	E2410VA020				•
64 STI Side Under Spoiler	E2610VA110	•	•	•	•
65 STI Rear Side Under Spoiler	E5610VA500	•	•	•	•
66 Flexible Tower Bar	ST20502VV000	•	•	•	•
67 Push Engine Start	ST83031ST012	•	•	•	•
68 Roof End Spoiler	ST96050VV320	•	•	•	•
69 STI ENKEI Alloy Wheel Set (4) - 18x7.5 (Silver)	B3110AL031K	•	•	•	
70 STI ENKEI Alloy Wheel Set (4) - 18x7.5 (Gun Metal)	B3110AL041K	•	•	•	

To view our complete range of accessories and pricing online visit [subaru.com.au/levorg/accessories](http://subaru.com.au/levorg/accessories)



# welcome to the family

There are cars that simply get you from A to B, and then there are cars that empower you. Buying a Subaru is like embracing life with both hands and knowing that nothing is going to stop you. When you buy a new Subaru you are welcomed into an owner's program that gives you access to a number of benefits.



## Subaru New Car Warranty – 3 Year/Unlimited Kilometres

Every new Subaru is covered by a three year unlimited kilometre manufacturer's national warranty. You can protect your investment further by purchasing an additional Subaru Assured Warranty<sup>1</sup> of up to three years. Visit [subaru.com.au/warranty](http://subaru.com.au/warranty) or ask your Subaru Retailer for more information.

## Subaru Capped Price Servicing

With our Subaru 3 Year/75,000 Kilometre Capped Price Servicing Program<sup>2</sup>, you'll now know the maximum amount you will

have to pay for your next scheduled service during the Program period. You'll also have peace of mind knowing that specialist Subaru technicians will be looking after your pride and joy using only Genuine Subaru Parts.



## DataDotDNA<sup>®</sup>

Every Subaru is fitted with advanced engine immobilisers and the DataDotDNA<sup>®3</sup> Theft Deterrent System. Microscopic dots are laser-etched with each vehicle's unique Vehicle Identification Number – making it a less attractive target for thieves.

## Three Year Rebate on Theft Insurance Excess

DataDot Technology (Australia) Pty Ltd will pay your theft insurance excess<sup>4</sup> (up to a maximum of \$800 including GST) should your new Subaru be stolen and not recovered within 45 days despite the presence of DataDotDNA<sup>®3</sup> and warning labels.

## 1-Month Health Check and Chat

The 1-Month Health Check and Chat is a free consultation within the first month after delivery of your new Subaru. It allows our factory-trained technicians to provide quick vehicle checks, and one of our Service Advisors will answer any of your questions to help ensure an ongoing, worry-free experience.

## Subaru's Map Updates

If your new Subaru is fitted with a factory line fit navigation unit your unit will be covered by Subaru's Map Update Program<sup>5</sup> – guaranteeing you'll have access to the latest maps with our Latest Map Guarantee and our 3 Year Map Update Program (subject to the vehicle having its scheduled services performed through a participating authorised Subaru Service Centre).

## My Subaru – online owner's destination

The My Subaru owner's portal is an online destination for owners which provides access

to exclusive benefits, tailored content, your vehicle's ownership history and much more. Login to My Subaru, the online destination for Subaru owners that will help you get more out of your vehicle, and more out of your life. Visit [my.subaru.com.au](http://my.subaru.com.au)

## Subaru Roadside Assistance

Enjoy 12 months of Australia-wide, standard Roadside Assistance when you purchase your new Subaru. In the unfortunate situation where you need that extra helping hand, our Roadside Assistance will help<sup>1</sup> with arranging a tow, battery service, flat tyre service, fuel delivery and lockout service.

## Subaru Certified Collision Repairer Network

With a dedicated Certified Collision Repairer<sup>2</sup> helpline available on 1800 737 179, help is available when you need it most. Available 24-hours a day, 7 days a week, help is only a phone call away. Subaru Certified Collision Repairers guarantee that trained specialists will repair your Subaru to strict factory specifications using Genuine Subaru Parts.

# live life without limits

## Genuine Accessories

Genuine Subaru Accessories are designed to enhance your vehicle, are factory approved by Subaru and are protected by the Genuine Subaru Accessories Warranty. For our full range of Subaru Levorg accessories visit [subaru.com.au/levorg/accessories](http://subaru.com.au/levorg/accessories). For warranty information visit [subaru.com.au/warranty](http://subaru.com.au/warranty) and click on "Genuine Subaru Accessories Warranty".

## Subaru Finance

Subaru Finance<sup>3</sup> provides a range of competitive financial solutions to approved customers. Our finance specialists will help you find a finance package to meet your needs conveniently.

## Subaru Insurance

It's important to enjoy the freedom of owning a Subaru, but it's also important to protect it. A range of Subaru Insurance<sup>4</sup> options provides a variety of choices, including: Subaru Comprehensive Motor Vehicle Insurance,

Subaru Value Protect Insurance and Subaru Loan Protection Insurance.

## Subaru Certified Used Cars

Every Subaru Certified Used Car has passed a 120-point quality inspection and comes with a one year unlimited kilometre Subaru Assured Warranty<sup>5</sup> – to complement the balance of a new vehicle warranty or the statutory warranty that remains – from participating Subaru Certified Used Car Retailers.

## Subaru Active

At Subaru we believe in living life to the fullest – from cycling and triathlons, to holidays and the arts. Through Subaru Active we promote the importance of a balanced lifestyle through a number of sponsorships and associations.

Get active at [subaru.com.au/active](http://subaru.com.au/active)

1. The Subaru Assured Warranty product is issued by the selling Subaru Retailer. Subaru Australia has no liability in respect of this warranty. 2. Every brand new 2018 Subaru Levorg comes with Subaru's 3 Year/75,000 Kilometre Capped Price Servicing Program. Available at participating Subaru Retailers only and does not apply to rental and some other classes of vehicles. For full Capped Price Servicing Terms and Conditions visit [subaru.com.au/service/pricing/capped-price-servicing](http://subaru.com.au/service/pricing/capped-price-servicing). 3. DataDotDNA<sup>®</sup> is a theft deterrent not a theft prevention mechanism. 4. Vehicles must be registered, comprehensively insured and less than 3 years old. DTA must receive a claim within 45 days of the theft. Terms and conditions apply. 5. Subaru's Map Update Program is available on MY18 Subaru Levorg variants purchased from August 1, 2017 onwards with the factory line fit Gen3 navigation unit. Subaru's Map Update Program is not available on accessory fit or dealer sourced navigation units. Subaru Australia reserves the right to add and remove eligible vehicles at its discretion. For full terms and conditions of the Subaru Map Update Program visit [subaru.com.au/owner-experience/benefits/subaru-map-update-program](http://subaru.com.au/owner-experience/benefits/subaru-map-update-program).

1. Terms and conditions apply. For a full list of benefits, visit <https://www.subaru.com.au/owner-experience/benefits/program/roadside>. 2. Subaru Certified Collision Repairer network not available in all areas. Call 1800 737 179 or visit [subaru.com.au/retailers](http://subaru.com.au/retailers) to find your closest Subaru Certified Collision Repairer. 3. Finance provided by Macquarie Leasing Pty Limited ABN 38 002 674 982 Australian Credit Licence Number 394925 trading as Subaru Finance. All applications for credit are subject to Macquarie's normal credit approval criteria. Terms and conditions, fees and charges apply. 4. Subaru Insurance products are issued by Allianz Australia Insurance Limited AFS Licence No. 234 708 ABN 15 000 122 850 (Allianz). In arranging this insurance Subaru (Aust) Pty Limited ABN 95 000 312 792 (Subaru) and the authorised dealers act as agents of Allianz and not as your agent. Neither Subaru nor any of its related companies or appointed authorised retailers have any liability in respect of these policies. 5. The Subaru Assured Warranty product is issued by the selling Subaru Retailer. Subaru Australia has no liability in respect of this warranty.

## Levorg Awards

2016 - Australasian New Car Assessment Program 5 star ANCAP safety rating

Subaru Australia reserves the right to vary vehicle specifications and standard features in Australia from those detailed in this brochure. Vehicles shown in this brochure may be fitted with accessories available at additional cost. No part of the brochure can be reproduced without written permission from Subaru Australia. Printed in Australia.

[subaru.com.au](http://subaru.com.au)

© Copyright 2017 – Subaru (Aust) Pty Limited. All rights reserved.  
Subaru (Aust) Pty Limited ABN 95 000 312 792 (Subaru Australia) PO Box 8311, Baulkham Hills NSW 2153 Toll Free: 1800 226 643



**SUBARU**