

2018

do scary
good



WRX *STI*





do™

do

do

do scary good

Subaru WRX STI is the iconic WRX, flexed to scary good proportions. The ultimate in turbocharged performance, the WRX STI delivers 221kW of power, 407Nm of torque and a road-gripping low centre of gravity. No wonder it has dominated Australian motorsport since 1996.

As well as phenomenal power, speed and handling, you'll enjoy a new level of comfort and sophisticated tech at your fingertips. With all the pure performance WRX STI is famous for, this is a car for drivers who live for the road.

The adrenaline pumping WRX STI is so scary good, calming down afterwards is the hardest part. Book a test drive today to experience it for yourself.

Do scary good.
Find out more at subaru.com.au/wrx-and-wrx-sti



Subaru WRX STI

rocket on rails

As well as uncompromising exhilaration and effortless control, the Subaru WRX STI is eye candy on the inside and out. With an STI sports mesh grille, 19" alloy wheels, tail pipe covers, yellow brake callipers with the STI logo, an optional rear spoiler and the STI's signature colour scheme – black with red stitching in the body-hugging sports seats, the silhouette is unmistakable.

Subaru WRX STI features

Performance

- + 2.5-litre turbocharged horizontally-opposed Boxer engine
- + 6-speed manual transmission
- + Maximum power output: 221kW@6000rpm
- + Maximum torque: 407Nm@4000rpm

Interior

- + Air-conditioning – dual zone climate control
- + Sports bucket seats – driver and front passenger with red stitching and embossed STI logo
- + Ultrasuede® seat trim with leather¹ accents
- + Leather¹ steering wheel and gear shift
- + Red seat belts

- + Smart key with push-start ignition
- + Manual seat height lifter – driver
- + 60/40 split folding rear seats

Exterior

- + 19" alloy wheels
- + Door mirrors with indicators - heated and power-folding
- + Rear spoiler (optional)
- + Brembo brake calipers – yellow with STI logo
- + Roof carrier brackets
- + STI sports mesh grille
- + Tail pipe covers
- + Headlights – self-levelling LED headlights with auto off (dusk-sensing)

- + Rear fog light
- + Rain-sensing front wipers

Entertainment / technology

- + Multi-Function Display unit (MFD)
- + Integrated infotainment system with 7" touchscreen
- + Satellite navigation
- + 8 harman kardon² speakers, subwoofer and amplifier
- + Bluetooth³ wireless technology
- + Rear view reverse camera
- + Auxiliary jack
- + USB connections (x2)
- + Voice command recognition

1. Some parts of the seating or trim are not full natural leather. 2. harman kardon® is a registered trademark of HARMAN International Industries, Incorporated. 3. Bluetooth® is a registered trademark of Bluetooth SIG Inc. System operation ability is subject to Bluetooth® wireless technology specification of individual device.

for the purist

Subaru WRX STI Premium adds tech and innovative features, like Subaru's Vision Assist technologies, for the driver's driver. Incorporating features such as Blind Spot Monitor, Rear Cross Traffic Alert, Side View Monitor, Lane Change Assist and more, these proactive technologies add to the long list of 5 star Subaru safety attributes.

Subaru WRX STI Premium features

Performance

- + 2.5-litre turbocharged horizontally-opposed Boxer engine
- + 6-speed manual transmission
- + Maximum power output: 221kW@6000rpm
- + Maximum torque: 407Nm@4000rpm

Interior

- + Air-conditioning – dual zone climate control
- + Sports bucket seats – driver and front passenger with red stitching and embossed STI logo
- + Leather¹ seat trim
- + Leather¹ steering wheel and gear shift
- + Smart key with push-start ignition
- + 8-way power seat with dual memory – driver
- + Electric lumbar support – driver
- + Heated seats – driver and front passenger

- + Red seat belts
- + 60/40 split folding rear seats
- + Auto-dimming rear view mirror

Exterior

- + 19" alloy wheels
- + Door mirrors with indicators – heated and power-folding
- + Rear spoiler (optional)
- + Brembo brake calipers – yellow with STI logo
- + Roof carrier brackets
- + STI sports mesh grille
- + Tail pipe covers
- + Headlights – self-levelling LED headlights with auto off (dusk-sensing)
- + Rear fog light
- + Rain-sensing front wipers
- + Front wipers with de-icer
- + Electric sunroof

Entertainment / technology

- + Multi-Function Display unit (MFD)
- + Integrated infotainment system with 7" touchscreen
- + Satellite navigation
- + 8 harman kardon² speakers, subwoofer and amplifier
- + Bluetooth³ wireless technology
- + Rear view reverse camera
- + Auxiliary jack
- + USB connections (x2)
- + Voice command recognition
- + Vision Assist featuring:
 - + Blind Spot Monitor (BSM)
 - + Front View Monitor (FVM)
 - + High Beam Assist (HBA)
 - + Lane Change Assist (LCA)
 - + Rear Cross Traffic Alert (RCTA)
 - + Side View Monitor (SVM)

For the purist.
Explore the range at subaru.com.au/wrx-and-wrx-sti

1. Some parts of the seating or trim are not full natural leather. 2. harman kardon[®] is a registered trademark of HARMAN International Industries, Incorporated. 3. Bluetooth[®] is a registered trademark of Bluetooth SIG Inc. System operation ability is subject to Bluetooth[®] wireless technology specification of individual device.



Subaru WRX STI Premium



Subaru WRX STI spec.R

the ultimate

Welcome to the new Subaru WRX STI spec.R. Heated RECARO sports bucket seats in the front with red stitching and embossed STI logo, and an eight-way power seat for the driver, this racer is ready to go. The rear spoiler, key to that legendary WRX STI silhouette, comes as standard.

Subaru WRX STI spec.R features

Performance

- + 2.5-litre turbocharged horizontally-opposed Boxer engine
- + 6-speed manual transmission
- + Maximum power output: 221kW@6000rpm
- + Maximum torque: 407Nm@4000rpm

Interior

- + Air-conditioning – dual zone climate control
- + Auto-dimming rear view mirror
- + RECARO sports bucket seats – driver and front passenger
- + Ultrasuede® seat trim with leather¹ accents
- + Leather¹ steering wheel and gear shift
- + Red seat belts
- + Smart key with push-start ignition
- + 8-way power seat – driver
- + 60/40 split folding rear seats

Exterior

- + 19" alloy wheels
- + Door mirrors with indicators – heated and power-folding
- + Electric sunroof
- + Front wipers with de-icer
- + Rear spoiler
- + Brembo brake calipers – yellow with STI logo
- + Roof carrier brackets
- + STI sports mesh grille
- + Tail pipe covers
- + Headlights – self-levelling LED headlights with auto off (dusk-sensing)
- + Rear fog light
- + Rain-sensing front wipers

Entertainment / technology

- + Multi-Function Display unit (MFD)
- + Integrated infotainment system with 7" touchscreen

- + Satellite navigation
- + 8 harman kardon®² speakers, subwoofer and amplifier
- + Bluetooth®³ wireless technology
- + Rear view reverse camera
- + Auxiliary jack
- + USB connections (x2)
- + Voice command recognition
- + Vision Assist featuring:
 - + Blind Spot Monitor (BSM)
 - + Front View Monitor (FVM)
 - + High Beam Assist (HBA)
 - + Lane Change Assist (LCA)
 - + Rear Cross Traffic Alert (RCTA)
 - + Side View Monitor (SVM)

1. Some parts of the seating or trim are not full natural leather. 2. harman kardon® is a registered trademark of HARMAN International Industries, Incorporated. 3. Bluetooth® is a registered trademark of Bluetooth SIG Inc. System operation ability is subject to Bluetooth® wireless technology specification of individual device.

why WRX STI?

Symmetrical force of power

Our All-Wheel Drive philosophy

Greater balance and control. That's the confidence you get from our unique Symmetrical All-Wheel Drive System, which delivers the drive distribution to all four wheels, all the time. Every Subaru WRX STI has an innate sense of balance from the ground up, thanks to a near perfect symmetrical layout.

Boxing clever

Our famous Subaru Boxer engine

While most engines stand vertically, ours lay flat. The famous Subaru Boxer engine delivers handling like no other engine can. Sitting horizontally in the engine bay, it moves like a boxer's fists with a punch and counterpunch action. Lightweight, low and flat, it makes for perfect balance and a much lower centre of gravity. It creates less noise and vibration too. All of this means better on-road handling for you. More stability. More performance. More fun. And a more confident drive.

DataDotDNA®

Every Subaru is fitted with advanced engine immobilisers and the DataDotDNA®⁰¹ Theft Deterrent System. Microscopic dots are laser-etched with each vehicle's unique Vehicle Identification Number – making it a less attractive target for thieves.

Three Year Rebate on Theft Insurance Excess

DataDot Technology (Australia) Pty Ltd will pay your theft insurance excess² (up to a maximum of \$800 including GST) should your new Subaru be stolen and not recovered within 45 days, despite the presence of DataDotDNA®⁰¹ and warning labels.

Finest safety

5 star ANCAP safety across the range

With spirit, quality and imagination comes some serious safety innovation. We want every Subaru to be amongst the safest cars on the road. Engineered full of cutting-edge technologies and the most intelligent design features. It's not a Subaru unless it carries the maximum 5 star ANCAP³ safety rating.

Eyes in the back of your head

Rear view reverse camera

Manoeuvring back into a tight side street? Family driveway littered with toys? Reverse with confidence, thanks to our rear view reverse camera technology. The rear view reverse camera is like having eyes in the back of your head. This greatly improves your visibility and reduces the risk of bumps and scrapes. A rear view reverse camera is standard across the WRX STI range.

Ultimate control in your hands

Multi-mode Driver's Control Centre Differential (DCCD)

Do drive with confidence wherever your WRX STI takes you, from your daily city commute to rain soaked highways. Take control of your drive with Multi-mode DCCD, Subaru technology which optimises traction, handling response and all round performance.

With four distinct modes, the driver controls the centre Limited Slip Differential (LSD) to match the conditions and their individual driving style. Exclusive to Subaru WRX STI, Multi-mode DCCD features Auto mode for all round driving performance. When things get slippery dial up Auto (+) mode for optimal traction in the wet, while Auto (-) lets you enjoy sharp handling in dry conditions. Or select Manual mode to put the power back in your own hands and match the control setting to your drive.

Intelligently driven

Subaru Intelligent Drive

Heading to the shops? Taking on the Great Ocean Road? Each situation deserves a distinctive driving mode, so we crafted Subaru Intelligent Drive (SI-Drive) technology available on all Subaru WRX STI variants to do just that. Switch from smart, to sporty to even sportier. Intelligent (I) mode – perfect for everyday driving, Sport (S) mode – for enhanced acceleration and all-round sporty performance and Sport Sharp (S#) mode – for a truly thrilling drive.

Clever thinking

Vision Assist

Imagine if your side mirrors could alert you when there's something in your blind spot. Or if your high beams could automatically switch to low beam, when approaching oncoming traffic at night. We made all this happen – and more – with Subaru's Vision Assist. Our suite of proactive safety technologies including Side View Monitor, Blind Spot Monitor, Rear Cross Traffic Alert, Lane Change Assist, High Beam Assist and Front View Monitor are always at work to help you feel safer on the road. Subaru's Vision Assist technologies are standard on the Subaru WRX STI Premium and WRX STI spec.R.

1. DataDotDNA® is a theft deterrent not a theft prevention mechanism. 2. Vehicles must be registered, comprehensively insured and less than 3 years old. DTA must receive a claim within 45 days of the theft. Terms and conditions apply. 3. The Australasian New Car Assessment Program (ANCAP) gives consumers consistent information on the level of occupant protection provided by vehicles in serious front and side crashes.

cockpit meets throne

The Subaru WRX STI cockpit is fit for rally champions, with its big, bright 7" touchscreen, DCCD and SI-Drive controls and gloss black instrument panel. Pump tunes and make handsfree calls through the harman kardon®¹ eight speaker stereo system with Bluetooth®² wireless technology. Satellite navigation and two USB connections are standard across the WRX STI range, as is a rear view reverse camera.



SI-Drive controls
All WRX STI variants



Push-start ignition
All WRX STI variants



harman kardon®¹ speakers
All WRX STI variants



Steering wheel controls
All WRX STI variants

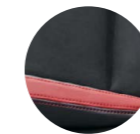


Subaru WRX STI Premium

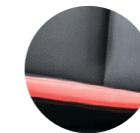
be inspired

Interior

On the inside, Subaru WRX STI features Ultraseude® trim with leather¹ accents. Sumptuous black leather¹ is standard on WRX STI Premium and on the WRX STI spec.R, RECARO sports bucket seats (driver and front passenger) with Ultraseude® trim and leather¹ accents.



Ultraseude® with Leather Accents Black



Leather Black



Ultraseude® with Leather Accents (RECARO) Black

Exterior

The colour you choose for your Subaru makes a bold statement about who you are. So we've made sure you've got lots of ways to express yourself – with a wide range of colours to make your Subaru more... you.



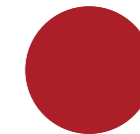
Crystal White Pearl



WR Blue Pearl



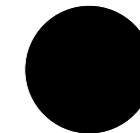
Lapis Blue Pearl



Pure Red



Dark Grey Metallic



Crystal Black Silica



Ice Silver Metallic

1. Some parts of the seating or trim are not full natural leather.

Note: Paint colours are representative only and subject to variation due to the printing process.

1. harman kardon® is a registered trademark of HARMAN International Industries, Incorporated. 2. Bluetooth® is a registered trademark of Bluetooth SIG Inc. System operation ability is subject to Bluetooth® wireless technology specification of individual device.

WRX STI specifications¹

MODEL	WRX STI	WRX STI Premium	WRX STI spec.R
	Sedan	Sedan	Sedan
Transmission			
6-speed manual transmission	•	•	•
Engine	Turbocharged horizontally-opposed Boxer 4-cylinder petrol engine		
Engine type	DOHC with Dual AVCS		
Valve mechanism	99.5 x 79.0		
Bore x stroke	mm	2457	
Capacity	cc	8.2:1	
Compression ratio		60	
Fuel tank capacity	litres	Multi point sequential injection	
Fuel system		98	
Fuel requirement (min)	RON		
Performance²			
Maximum power output (DIN)	kW/rpm	221kW@6000rpm	
Maximum torque (DIN)	Nm/rpm	407Nm@4000rpm	
Acceleration ³ 0 – 100 km/h	seconds	5.2	
Electronic Throttle Control system (ETC)		Drive-by-wire	
Fuel consumption (ADR 81/02) For comparison purposes only. Real world results may vary ⁴ :			
	combined	l/100km	11.2
	urban	l/100km	15.4
	extra urban	l/100km	8.7
CO ₂ emissions (ADR 81/02)	combined	(g/km)	259
Symmetrical All-Wheel Drive			
Type	Manual	Multi-mode Driver Controlled Centre Differential (DCCD)	
Transmission			
Gear ratio	1st	3.636	
	2nd	2.235	
	3rd	1.590	
	4th	1.137	
	5th	0.891	
	6th	0.707	
Gear ratio – reverse		3.545	
Final reduction gear ratio		3.900	

1. Subaru Australia reserves the right to change mechanical specification and equipment levels without notice. 2. All performance data measured using 95RON as required by Australian Design Rule 81/02. Vehicles tested in accordance with ADR 81/02. 3. Acceleration test performed under controlled conditions. 4. Fuel consumption figures quoted are measured in accordance with Australian Design Rule 81/02 and are for comparison purposes only. Real world results may vary based on individual driving circumstances e.g. traffic conditions, driving style, vehicle conditions, fuel quality, climatic conditions etc. Fuel consumption figures for the WRX STI without spoiler: 10.9 (l/100km) combined, 15.1 (l/100km) urban, 8.4 (l/100km) extra urban and CO₂: 252 (g/km) combined.

WRX STI specifications¹

MODEL	WRX STI	WRX STI Premium	WRX STI spec.R
Steering	Quick ratio hydraulic power assisted rack and pinion		
Steering			
Minimum turning circle	m	11.0	
Suspension			
Type	Front	MacPherson struts inverted, lower L-arms, coil springs, stabiliser bar	
	Rear	Double wishbone, coil springs, stabiliser bar	
Brakes			
Type	Front	Brembo 6pot front caliper with STI logo, ventilated disc brake	
	Rear	Brembo 2pot rear caliper with STI Logo, ventilated disc brake	
Brake booster type	Tandem		
ABS	4-channel, 4-sensor ABS with Electronic Brakeforce Distribution and VDC		
Wheels and Tyres			
Tyre model	Yokohama Advan Sport V105		
Tyres (width, profile, size, load index and speed rating)	245/35 R19 89W		
Rim size	19x8.5J		
Wheels	19"		
Spare wheel	Spacesaver wheel		
Measurement			
Overall length	mm	4595	
Overall width	mm	1795	
Overall height	mm	1475	
Wheel base	mm	2650	
Front track	mm	1530	
Rear track	mm	1540	
Minimum ground clearance ²	mm	135	
Cargo volume	litres	460	
Kerb weight ³	kg	1548	1572
Tare mass ³	kg	1508	1532
Seating capacity		5	

1. Subaru Australia reserves the right to change mechanical specification and equipment levels without notice. 2. Ground clearance at kerb weight. 3. Vehicle kerb weight and tare mass varies according to the types of optional equipment included.

WRX STI features¹

MODEL	WRX STI	WRX STI Premium	WRX STI spec.R
Safety Rating			
5 star ANCAP ² safety rating (maximum 5)	•	•	•
Collision Avoidance			
Symmetrical All-Wheel Drive (SAWD)	•	•	•
Vehicle Dynamics Control system (VDC) featuring:	•	•	•
Electronic Stability Control (ESC)	•	•	•
Anti-lock Braking System (ABS)	•	•	•
Electronic Brakeforce Distribution (EBD)	•	•	•
Brake Assist	•	•	•
Traction Control System (TCS)	•	•	•
Active Torque Vectoring system	•	•	•
4-wheel disc brakes	•	•	•
Brembo 6pot front caliper with STI Logo, ventilated disc brake	•	•	•
Brembo 2pot rear caliper with STI Logo, ventilated disc brake	•	•	•
Rear view reverse camera	•	•	•
Vision Assist featuring:		•	•
Blind Spot Monitor (BSM)		•	•
Front View Monitor (FVM)		•	•
High Beam Assist (HBA)		•	•
Lane Change Assist (LCA)		•	•
Rear Cross Traffic alert (RCTA)		•	•
Side View Monitor (SVM)		•	•
Collision Protection			
SRS ³ airbags – dual front, dual front side and curtain	•	•	•
SRS ³ airbags – knee airbag (driver only)	•	•	•
Front seat belts with pretensioners and load limiters	•	•	•
3 point A/ELR rear seat belts	•	•	•
Height adjustable seat belt anchors – driver and front passenger	•	•	•
Seat belt warning lights – all seats	•	•	•
Rear seat headrests for 3 seating positions	•	•	•
Height and angle adjustable front seat headrests	•	•	•
Height adjustable rear seat headrests	•	•	•

1. Subaru Australia reserves the right to change mechanical specification and equipment levels without notice. 2. The Australasian New Car Assessment Program (ANCAP) gives consumers consistent information on the level of occupant protection provided by vehicles in serious front and side crashes. 3. SRS: Supplemental Restraint System. Effective when used in conjunction with seat belts.

WRX STI features¹

MODEL	WRX STI	WRX STI Premium	WRX STI spec.R
Child Safety			
Child seat anchor points (x3)	•	•	•
ISOFIX anchor points (x2)	•	•	•
Rear door child locks	•	•	•
Intelligent Driving Dynamics			
Electronic Throttle Control system (ETC)	•	•	•
Cruise Control	•	•	•
Subaru Intelligent Drive (SI-Drive):	•	•	•
Intelligent (I) mode	•	•	•
Sport (S) mode	•	•	•
Sport Sharp (S#) mode	•	•	•
Multi-mode Driver's Control Centre Differential (DCCD)	•	•	•
Chassis and Mechanism			
Aluminium forged front lower arm	•	•	•
Front and rear stabiliser	•	•	•
Large intercooler	•	•	•
Rear Limited Slip Differential (LSD)	Torsen	Torsen	Torsen
Red shrink-painted intake manifold	•	•	•
Exterior			
Body coloured mirrors and door handles	•	•	•
Body coloured rear garnish	•	•	•
Bonnet scoop	•	•	•
Bonnet with gas struts	•	•	•
Brake calipers	Yellow with STI logo	Yellow with STI logo	Yellow with STI logo
Detachable module type windscreen wipers	•	•	•
Door mirrors with indicators – heated and power-folding	•	•	•
Dual tail pipes – twin	•	•	•
Electric sunroof		•	•
Exterior grade badge	•	•	•
Front wipers with de-icer		•	•
Fuel cap – tethered	•	•	•
Rear diffuser	•	•	•
Roof carrier brackets	•	•	•

1. Subaru Australia reserves the right to change mechanical specification and equipment levels without notice.

WRX STI features¹

MODEL	WRX STI	WRX STI Premium	WRX STI spec.R
Rear spoiler	Optional	Optional	•
Shark fin antenna	•	•	•
Side garnish with STI logo	•	•	•
Side sill skirts	•	•	•
Spacesaver spare wheel (steel)	•	•	•
STI sports mesh grille	•	•	•
Tail pipe covers	•	•	•
19" alloy wheels	•	•	•
Lighting – Exterior			
Daytime running lights - LED	•	•	•
Rear fog light	•	•	•
Headlights – dusk-sensing	•	•	•
Headlights – self-levelling LED headlights with auto off	•	•	•
Rear LED combination lights	•	•	•
Rear LED stoplight	•	•	•
Steering Responsive Headlights (SRH)	•	•	•
Welcome lighting	•	•	•
Lighting – Interior			
Cabin and cargo area lights	•	•	•
Map lights (x2)	•	•	•
Air-conditioning			
Air-conditioning – dual zone climate control	•	•	•
Anti-dust filter	•	•	•
Front and side demisters	•	•	•
Floor heater ducts for rear passengers	•	•	•
Rear windscreen demister – electric	•	•	•
Security			
DataDotDNA ^{®2} security system	•	•	•
Immobiliser security system	•	•	•
Instrumentation and Controls			
Adjustable steering wheel – height and telescopic	•	•	•
Electroluminescent gauges with colour MID	•	•	•
Hazard warning indicators	•	•	•
Instrument cluster	•	•	•

WRX STI features¹

MODEL	WRX STI	WRX STI Premium	WRX STI spec.R
One touch lane change indicator	•	•	•
Sports pedals	•	•	•
Steering wheel controls:	•	•	•
Audio	•	•	•
Bluetooth ^{®2}	•	•	•
Cruise	•	•	•
MID	•	•	•
Multi-Function Displays			
Multi-Information Display unit (MID) featuring:	•	•	•
3.5" LCD screen	•	•	•
Journey information	•	•	•
Eco-gauge display	•	•	•
SI-Drive display	•	•	•
Warning display	•	•	•
Digital speedometer	•	•	•
Multi-Function Display unit (MFD) featuring:	•	•	•
5.9" LCD screen	•	•	•
Outside temperature and clock display	•	•	•
Journey and fuel economy information	•	•	•
Air-conditioning and seat belt display	•	•	•
Preventative Safety display	•	•	•
Turbo boost pressure display	•	•	•
MFD visor with red stitching	•	•	•
Twin trip meter (switchable)	•	•	•
Storage			
Centre console box	•	•	•
Cupholders – centre console with sliding lid	•	•	•
Cupholders – rear	•	•	•
Door pockets with integrated bottle holder – front and rear	•	•	•
Front centre tray – with STI logo	•	•	•
Seat back pocket – driver and front passenger	•	•	•

1. Subaru Australia reserves the right to change mechanical specification and equipment levels without notice. 2. DataDotDNA[®] is a theft deterrent not a theft prevention mechanism

1. Subaru Australia reserves the right to change mechanical specification and equipment levels without notice. 2. Bluetooth[®] is a registered trademark of Bluetooth SIG Inc. System operation ability is subject to the Bluetooth[®] wireless technology specification of individual's device.

WRX STI features¹

MODEL	WRX STI	WRX STI Premium	WRX STI spec.R
Convenience			
12V/120W power jacks (x2)	•	•	•
Auto-dimming rear view mirror		•	•
Boot unlock on remote central locking keys	•	•	•
Sunvisors with illuminated vanity mirrors – driver and front passenger	•	•	•
Interior fuel lid lock release	•	•	•
Intermittent variable speed front windscreen wipers	•	•	•
Power steering and mirrors	•	•	•
Power windows - all with auto function	•	•	•
Rain-sensing front windscreen wipers	•	•	•
Remote central locking – selective unlock	•	•	•
Remote central locking keys (x2)	•	•	•
Smart key and push-start ignition	•	•	•
Interior Trims			
Carpet trim – black	•	•	•
Leather ² steering wheel and gear shift	•	•	•
RECARO sports bucket seats - driver and front passenger			•
Red seat belts	•	•	•
Seat trim – leather ²	Ultrasuede® with leather ² accents	•	Ultrasuede® with leather ² accents
Seat trim colour – black	With red accents	With red accents	With red accents
Side sill stainless plates with STI logo (front)	•	•	•
Sports bucket seats – driver and front passenger with red stitching and embossed STI logo	•	•	•
Seating Extras			
60/40 split folding rear seats	•	•	•
8-way power seat – driver			•
8-way power seat with dual memory – driver		•	
Heated seats – driver and front passenger		•	•
Electric lumbar support - driver		•	
Manual seat height lifter – driver	•		

1. Subaru Australia reserves the right to change mechanical specification and equipment levels without notice. 2. Some parts of the seating or trim are not full natural leather.

WRX STI features¹

MODEL	WRX STI	WRX STI Premium	WRX STI spec.R
Entertainment			
Integrated infotainment system featuring:	•	•	•
Satellite navigation	•	•	•
AM/FM radio	•	•	•
Single CD player	•	•	•
8 harman kardon ⁸² speakers, subwoofer and amplifier	•	•	•
7" touchscreen	•	•	•
Siri ⁸³ compatibility	•	•	•
Bluetooth ⁸⁴ wireless technology with:	•	•	•
Handsfree mobile communication	•	•	•
Audio streaming ⁵	•	•	•
Voice command recognition	•	•	•
Auxiliary jack – front centre console	•	•	•
USB connection (x2) – front centre console	•	•	•
Warranty			
3 Year/Unlimited Km Warranty	•	•	•
3 Year/75,000 Km Capped Price Servicing Program ⁶	•	•	•
12 Month Roadside Assistance Program ⁷	•	•	•

1. Subaru Australia reserves the right to change mechanical specification and equipment levels without notice. 2. harman kardon is a registered trademark of HARMAN International Industries, Incorporated. 3. Requires compatible Siri® enabled Apple device to be paired with the infotainment system. 4. Bluetooth® is a registered trademark of Bluetooth SIG Inc. System operation ability is subject to the Bluetooth® wireless technology specification of individual's device. 5. There may be restrictions on features available for certain models that are not fully compliant with AVCRP. 6. Every brand new 2018 Subaru WRX STI comes with Subaru's 3 Year/75,000 Kilometre Capped Price Servicing Program. Available at participating Subaru Retailers only and does not apply to rental and some other classes of vehicles. For full Capped Price Servicing Terms and Conditions visit [subaru.com.au/service/pricing/capped-price-servicing](https://www.subaru.com.au/service/pricing/capped-price-servicing). 7. Terms and conditions apply. For a full list of benefits, visit <https://www.subaru.com.au/owner-experience/benefits/program/roadside>.



Subaru WRX STI

make it yours

Subaru WRX STI drivers tend to be discerning, so we've got all the bells and whistles required to customise your pride and joy to your exact requirements.

- + Protection** Protect your Subaru WRX STI with a range of products including a carpet mat set, cargo tray, car cover and rear bumper protector.
- + Cargo** To extend your Subaru WRX STI's carrying capacity we offer a broad range of Subaru and Thule sport and cargo carrier accessories.
- + Security, Convenience and Safety** Keep your new wheels secure with a security alarm system. New parents will love our 6-point-harness baby seat that integrates with Subaru WRX STI's ISOFIX anchor points.
- + STI Performance Parts** Tweak the performance of your Subaru WRX STI for that extra edge. Emphasise the beast with performance parts for optimum handling and control. Or spiff it up with a stylish leather gear knob and our range of aerodynamic spoilers.

Genuine Subaru Accessories are available from your Subaru Retailer, so be sure to ask about the range when buying your new Subaru WRX STI.

 To view our complete range of accessories and pricing online visit subaru.com.au/wrx-sti/accessories

do

do

do



packs that will inspire you

From coastal adventures to nights out in the city, this quality Genuine Subaru Accessory Pack will add a stylish flare like no other and give you the versatility you desire to stand out with your Subaru WRX STI.

Both stylish and functional, each Styling Pack¹ accessory has been custom made for a tailored fit to complement your Subaru WRX STI and keep it looking good for years to come.

Plus all Genuine Subaru Accessories are protected by our manufacturer's warranty².

Styling Pack¹ includes:

a STI Front Under Spoiler

Do corners and open road driving with more confidence, stability and handling, while adding stylish appeal.

b STI Side Under Spoiler

Enhance the stylish silhouette of your WRX STI with this sleek side spoiler designed to complement the vehicle's bodyline.

c STI Rear Side Under Spoiler

Have some fun and finish first with sporty design detail for every last inch of your WRX STI.

d STI Rear Under Spoiler

Complete the picture with this rear under spoiler which improves overall vehicle aerodynamics and adds an aggressive, dynamic look.

1. Adding Styling Pack will lower ground clearance.

2. For full warranty terms and conditions, visit subaru.com.au/accessories-information/warranty

protect your investment

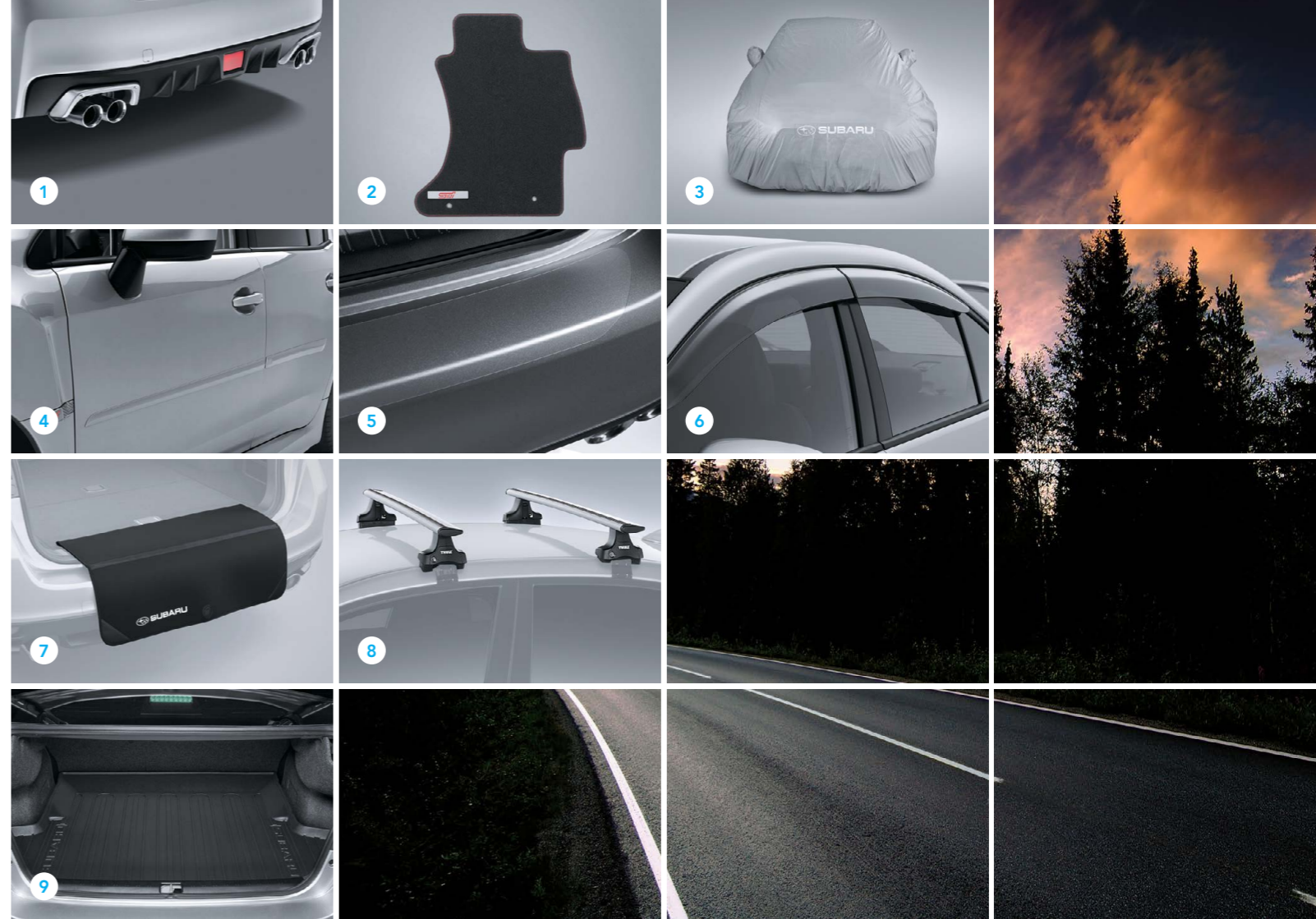
Do more while protecting your WRX STI from the rough and tumble of daily life. From carpet mats to a rear bumper protector, each of the below accessories are tailored for a perfect fit.

ACCESSORY	Part Number	WRX STI	WRX STI Premium	WRX STI spec.R
Styling				
1 Exhaust Surround	E7710VA700	•	•	•
Protection				
2 Carpet Mat Set	J501AVA101	•	•	•
3 Car Cover ¹	M001SFJ000	•	•	•
4 Body Side Moulding (Painted)	J101SFJ000##	•	•	•
5 Rear Bumper Protector (Film Type)	E771SFJ600	•	•	•
6 Weather Shields	E3610FJ800	•	•	•
7 Bootlip and Bumper Protector	SAT6003	•	•	•
Cargo and Tow				
8 Roof Cross Bars	SAT3006	•	•	•
9 Cargo Tray	J501SFJ400	•	•	•

Denotes colour option of your choice.
1. Car Cover not compatible with rear spoiler.

To view our complete range of accessories and pricing online visit subaru.com.au/wrx-sti/accessories

	Not Applicable
•	Applicable





do all the things you've planned

Get out amongst it and pack more into your weekends with premium quality accessories that let you effortlessly take all your gear with you.

ACCESSORY	Part Number	WRX STI	WRX STI Premium	WRX STI spec.R
Cargo – Thule Roof Attachments (Roof Cross Bars Required)				
10 Xtender 6 Pair Ski Holder	SA1156	•	•	•
11 Thule Universal Flat Top Ski Carrier (4 Pair)	SAT8023	•	•	•
12 Thule Universal Flat Top Ski Carrier (6 Pair)	SAT8024	•	•	•
13 Bicycle Holder (Upright)	SAT8018	•	•	•
14 Bicycle Holder – Black (Upright)	SAT8019	•	•	•
15 Bicycle Holder (Fork Mounted)	SA1042	•	•	•
16 Universal Locking Arm	SA1043	•	•	•
17 Water Craft Holder	SA1044	•	•	•
18 Surfboard Carrier	SA1139	•	•	•
19 Thule Glide & Set (Kayak Carrier)	SAT9018	•	•	•
20 Thule Paddleboard & Mal Carrier	SAT8016	•	•	•
21 Luggage Pod Touring 100 (Titan Aeroskin) Textured Finish (Small)	SAT5008	•	•	•
22 Luggage Pod Touring 100 (Black Glossy) Smooth Finish (Small)	SAT5008B	•	•	•
23 Luggage Pod Motion 200 (Silver)	SAT9014	•	•	•
24 Luggage Pod Motion 200 (Black)	SAT9015	•	•	•



To view our complete range of accessories and pricing online visit subaru.com.au/wrx-sti/accessories

ACCESSORY		Part Number	WRX STI	WRX STI Premium	WRX STI spec.R
Cargo – Thule Roof Attachments (Roof Cross Bars Required)					
25	Thule Go Box	SAT8005	•	•	•
26	Thule Go Pack Set (4 Bags)	SAT8006	•	•	•
27	Side Up Wheel Step	SAT9004	•	•	•
Security					
28	Wheel Lock Nuts	B327EYA000	•	•	•
29	Security Alarm System	H771AVA200	•	•	•
Convenience and Safety					
30	Round Type Ashtray (Black)	92172AG040	•	•	•
31	Cigarette Lighter	H6710FJ000	•	•	•
32	Ash Tray Holder	F6010AG010	•	•	•
33	First Aid Kit	PR7670	•	•	•
34	Safety Triangle	SAT9007	•	•	•
35	Baby Seat - Kompressor Beyond Midnight	SAC7004	•	•	•



25



26



27



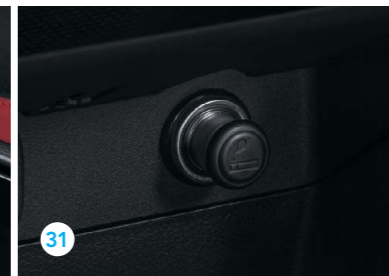
28



29



30



31



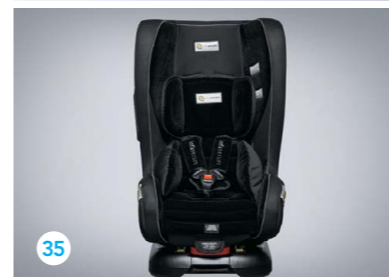
32



33



34



35



To view our complete range of accessories and pricing online visit subaru.com.au/wrx-sti/accessories



kick it into overdrive

Up the ante on your Subaru WRX STI by enhancing its street appeal, cockpit aesthetics and driver dynamics with our STI branded accessories.

ACCESSORY	Part Number	WRX STI	WRX STI Premium	WRX STI spec.R
STI Performance Parts				
36 Flexible Tower Bar	ST20502VV010	•	•	•
37 Short Throw Shifter	C1010FG600	•	•	•
38 Competition Timing Belt	ST130284S000	•	•	•
39 Push-Start Engine Switch (Red)	ST83031ST012	•	•	•
40 STI Leather Shift Knob	C1010FG100	•	•	•
41 STI Front Under Spoiler ¹	E2410VA030	•	•	•
42 STI Side Under Spoiler ¹	E2610VA000	•	•	•
43 STI Rear Side Under Spoiler ¹	E5610VA000	•	•	•
44 STI Rear Under Spoiler ¹	E5610VA120	•	•	•
45 Wheel Lock Nut Set (black)	ST28170ST020	•	•	•
46 Security Wheel Nut Set	ST28170ST060	•	•	•
47 Valve Cap Set	ST28102ST030	•	•	•
48 Battery Clamp/Holder	ST82182ST000	•	•	•
49 High Pressure Radiator Cap	ST4511355010	•	•	•
50 Sports Oil Filter	ST152084S000	•	•	•
51 Oil Cap	ST15257ZR010	•	•	•

1. Will reduce ground clearance.

To view our complete range of accessories and pricing online visit subaru.com.au/wrx-sti/accessories

welcome to the family

There are cars that simply get you from A to B, and then there are cars that empower you. Buying a Subaru is like embracing life with both hands and knowing that nothing is going to stop you. When you buy a new Subaru you are welcomed into an owner's program that gives you access to a number of benefits.



Subaru New Car Warranty – 3 Year/Unlimited Kilometres

Every new Subaru is covered by a three year unlimited kilometre manufacturer's national warranty. You can protect your investment further by purchasing an additional Subaru Assured Warranty¹ of up to three years. Visit subaru.com.au/warranty or ask your Subaru Retailer for more information.

Subaru Capped Price Servicing

With our Subaru 3 Year/75,000 Kilometre Capped Price Servicing Program², you'll now know the maximum amount you will have to

pay for your next scheduled service during the Program period. You'll also have peace of mind knowing that specialist Subaru technicians will be looking after your pride and joy using only Genuine Subaru Parts.



DataDotDNA[®]

Every Subaru is fitted with advanced engine immobilisers and the DataDotDNA^{®3} Theft Deterrent System. Microscopic dots are laser-etched with each vehicle's unique Vehicle Identification Number – making it a less attractive target for thieves.

Three Year Rebate on Theft Insurance Excess

DataDot Technology (Australia) Pty Ltd will pay your theft insurance excess⁴ (up to a maximum of \$800 including GST) should your new Subaru be stolen and not recovered within 45 days, despite the presence of DataDotDNA^{®3} and warning labels.

1-Month Health Check and Chat

The 1-Month Health Check and Chat is a free consultation within the first month after delivery of your new Subaru. It allows our factory-trained technicians to provide quick vehicle checks, and one of our Service Advisors will answer any of your questions to help ensure an ongoing, worry-free experience.

Subaru's Map Updates

If your new Subaru is fitted with a factory line fit navigation unit your unit will be covered by Subaru's Map Update Program⁵ – guaranteeing you'll have access to the latest maps with our Latest Map Guarantee and our 3 Year Map Update Program (subject to the vehicle having its scheduled services performed through a participating authorised Subaru Service Centre).

My Subaru – online owner's destination

The My Subaru owner's portal is an online destination for owners which provides access

to exclusive benefits, tailored content, your vehicle's ownership history and much more. Login to My Subaru, the online destination for Subaru owners that will help you get more out of your vehicle, and more out of your life. Visit my.subaru.com.au

Subaru Roadside Assistance

Enjoy 12 months of Australia-wide, standard Roadside Assistance when you purchase your new Subaru. In the unfortunate situation where you need that extra helping hand, our Roadside Assistance will help¹ with arranging a tow, battery service, flat tyre service, fuel delivery and lockout service.

Subaru Certified Collision Repairer Network

With a dedicated Certified Collision Repairer² helpline available on 1800 737 179, help is available when you need it most. Available 24-hours a day, 7 days a week, help is only a phone call away. Subaru Certified Collision Repairers guarantee that trained specialists will repair your Subaru to strict factory specifications using Genuine Subaru Parts.

live life without limits

Genuine Accessories

Genuine Subaru Accessories are designed to enhance your vehicle, are factory approved by Subaru and are protected by the Genuine Subaru Accessories Warranty. For our full range of Subaru WRX STI accessories visit subaru.com.au/wrx-sti/accessories. For warranty information visit subaru.com.au/warranty and click on "Genuine Subaru Accessories Warranty".

Subaru Finance

Subaru Finance³ provides a range of competitive financial solutions to approved customers. Our finance specialists will help you find a finance package to meet your needs conveniently.

Subaru Insurance

It's important to enjoy the freedom of owning a Subaru, but it's also important to protect it. A range of Subaru Insurance⁴ options provides a variety of choices, including: Subaru

Comprehensive Motor Vehicle Insurance, Subaru Value Protect Insurance and Subaru Loan Protection Insurance.

Subaru Certified Used Cars

Every Subaru Certified Used Car has passed a 120-point quality inspection and comes with a one year unlimited kilometre Subaru Assured Warranty⁵ – to complement the balance of a new vehicle warranty or the statutory warranty that remains – from participating Subaru Certified Used Car Retailers.

Subaru Active

At Subaru we believe in living life to the fullest – from cycling and triathlons, to holidays and the arts. Through Subaru Active we promote the importance of a balanced lifestyle through a number of sponsorships and associations.

Get active at subaru.com.au/active

1. The Subaru Assured Warranty product is issued by the selling Subaru Retailer. Subaru Australia has no liability in respect of this warranty. 2. Every brand new 2018 Subaru WRX STI comes with Subaru's 3 Year/75,000 Kilometre Capped Price Servicing Program. Available at participating Subaru Retailers only and does not apply to rental and some other classes of vehicles. For full Capped Price Servicing Terms and Conditions visit subaru.com.au/service/pricing/capped-price-servicing. 3. DataDotDNA[®] is a theft deterrent not a theft prevention mechanism. 4. Vehicles must be registered, comprehensively insured and less than 3 years old. DTA must receive a claim within 45 days of theft. Terms and conditions apply. 5. Subaru's Map Update Program is available on MY18 WRX STI models purchased from July 24, 2017 onwards with the factory line fit Gen2.1 navigation unit. Subaru's Map Update Program is not available on accessory fit or dealer sourced navigation units. Subaru Australia reserves the right to add and remove eligible vehicles at its discretion. For full terms and conditions of the Subaru Map Update Program visit subaru.com.au/owner-experience/benefits/subaru-map-update-program.

1. Terms and conditions apply. For a full list of benefits, visit <https://www.subaru.com.au/owner-experience/benefits/program/roadside>. 2. Subaru Certified Collision Repairer network not available in all areas. Call 1800 737 179 or visit subaru.com.au/retailers to find your closest Subaru Certified Collision Repairer. 3. Finance provided by Macquarie Leasing Pty Limited ABN 38 002 674 982 Australian Credit Licence Number 394925 trading as Subaru Finance. All applications for credit are subject to Macquarie's normal credit approval criteria. Terms and conditions, fees and charges apply. 4. Subaru Insurance products are issued by Allianz Australia Insurance Limited AFS Licence No. 234 708 ABN 15 000 122 850 (Allianz). In arranging this insurance Subaru (Aust) Pty Limited ABN 95 000 312 792 (Subaru) and the authorised dealers act as agents of Allianz and not as your agent. Neither Subaru nor any of its related companies or appointed authorised retailers have any liability in respect of these policies. 5. The Subaru Assured Warranty product is issued by the selling Subaru Retailer. Subaru Australia has no liability in respect of this warranty.

Subaru WRX STI Awards

2014 - Carsales, Car of the Year, Best Performance Car Under \$100,000

2014 - Australasian New Car Assessment Program 5 star ANCAP safety rating

2011 - Australasian New Car Assessment Program 5 star ANCAP safety rating for the entire Impreza range

2007 - Australasian New Car Assessment Program 5 star ANCAP safety rating for the entire Impreza range

2005 - MOTOR Magazine, Bang For Your Bucks Winner

1996 - 2005 - Australian Rally Driver's Championship from 1996 through to 2005

1997 - 2005 - Australian Rally Manufacturer's Championship in 1997, 1998, 1999, 2000, 2001, 2002, 2003, 2004 and 2005

Subaru Australia reserves the right to vary vehicle specifications and standard features in Australia from those detailed in this brochure. Vehicles shown in this brochure may be fitted with accessories available at additional cost. No part of the brochure can be reproduced without written permission from Subaru Australia. Printed in Australia.

subaru.com.au

© Copyright 2017 – Subaru (Aust) Pty Limited. All rights reserved.
Subaru (Aust) Pty Limited ABN 95 000 312 792 (Subaru Australia) PO Box 8311, Baulkham Hills NSW 2153 Toll Free: 1800 226 643

