

Camry

Impressive from every angle.



toyota.com.au


Oh what a feeling!

Room to move in style.

With its well-earned reputation as Australia's favourite mid-size sedan, Camry now delivers a new dimension of innovation and style for the modern family car.

Refined, desirable and packed full of the latest technology, Camry effortlessly combines enviable efficiency and advanced security with impressive performance.

And once inside, you'll find all the features and comfort you'll need to keep the family happy, however long the journey.

With Camry Altise, Atara S and Atara SL available in your choice of either petrol or hybrid engines, or the more sporty petrol powered Atara SX, it's now easier than ever to choose the Camry that's perfect for you.



Front cover: Atara SX model shown
This page: Atara SL Hybrid model shown

Brilliant comfort and sound.



Atara SX model shown

Settle in, make yourself at home and prepare to ride in style. From the distinguished finishing touches, dual-zone climate control air conditioning, through to the Leather Accented interior on Atara SL and SX, Camry whispers enviable comfort at every turn.

Grip the specially designed three spoke steering wheel and you can easily reach essential controls including cruise control and audio settings without ever needing to lift your hands.

Access outstanding sound through a touchscreen display audio screen or AUX/USB¹ inputs to crisply deliver your favourite tunes. You'll find Bluetooth^{®2} for hands-free phone operation as well as music and media streaming standard across the range, with the system rising to audio deluxe on Atara S and SX models featuring voice recognition.

Additionally on Atara SL it includes a 7" screen, JBL premium audio unit with a 10-speaker

surround sound system and Satellite Navigation³ making every trip a more pleasurable journey.

Then connect your smartphone with Toyota Link⁴ to find fuel, accommodation, plan trips, receive real time advice, easy-to-follow directions and the latest weather information, all delivered through the Atara S, SX and SL audio units.



Atara SL Hybrid model shown



Hybrid model Optitron instrument panel



Quick response sports paddle-shift
– Atara SX model shown



Premium gear knob and beverage holders
– Atara SL hybrid model shown



60/40 split fold rear seats
– Atara SL hybrid model shown



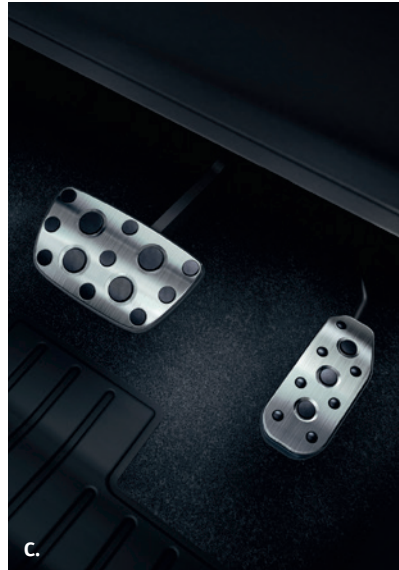
Electrically adjustable drivers seat – Atara SL model shown



A.



B.



C.

Smarter space.

Each Camry journey begins before you even step inside, with the Smart Entry and Start system⁵ allowing you to unlock and start your car while the key remains in your pocket.

Once settled into the driver's seat, the Multi Information Display (MID) places all the essential information you need right before your eyes. It allows you to quickly see trip, GPS, phone information, outside temperature, warning messages and advice, as well as the Eco Drive Level (ECO) percentages that provide detailed insights into your driving style and help encourage more efficient driving.

There's also ample legroom for everyone to stretch out on longer journeys, plus plenty of handy storage compartments. The 60/40 split fold rear seats add extra versatility and space to the already more than generous boot, so it's ready to pack almost anything your family can throw at it.

With sports pedals fitted as standard on Atara SX, you'll enjoy an even greater connection to Camry when on the road.

A. Audio unit with reversing camera⁶ – Atara SL hybrid model shown
B. Smart Start Button – Not available on Altise petrol model
C. Sports pedals – Atara SX model shown



2.5 litre Dual VVT-i petrol engine

The power of choice.

Now it's easy to choose your perfect Camry then power it the way you prefer. All Camry models are available with the highly responsive 2.5L Dual Variable Valve Timing with intelligence (VVT-i) petrol engine. And for those seeking greater efficiency, Altise, Atara S and Atara SL are all available with the Hybrid Synergy Drive (HSD) engine.

The 2.5L Dual VVT-i engine provides continual variations in the intake valve timing to improve drivability, performance and fuel efficiency. Its impressive power is delivered through a highly responsive 6-speed sequential transmission across the Camry range, with quick response sports paddle-shift mode for faster gear changes and a more dynamic driving experience on all Atara Petrol models.

The Hybrid Synergy Drive (HSD) developed by Toyota, combines an electric motor with petrol engine to maximise fuel efficiency and reduce fuel emissions. The electric motor can power the car on its own, meaning the petrol engine only kicks in whenever you need more power, so you use less petrol when cruising. It allows you to change modes to suit your needs by choosing 'PWR' for strong performance, 'ECO' for absolute fuel efficiency or 'EV' for low speed driving using only the electric motor.

A. Drive mode switches – Hybrid model shown
B. 2.5 litre Atkinson cycle 4-cylinder petrol engine



Efficiency, without compromise.

Built around the world's leading, most tried and tested hybrid technology, Toyota's Hybrid Synergy Drive® (HSD) comes standard in Camry Hybrid models and delivers remarkable fuel efficiency without compromising performance. The intelligent energy management system seamlessly synergises the car's petrol engine with its electric motor so each power unit either supports the other or takes over completely, depending on the driving situation.

The electric motor in the Hybrid Synergy Drive® (HSD) system generates enough power to drive the car on its own, meaning the petrol engine isn't needed at ignition or low speed. It kicks in whenever you call for more power, accelerate hard, or cruise at high speed.

And because the battery is kept charged through normal driving and recaptures energy from braking and deceleration, it provides all the power the electric motor needs.



HYBRID

4 key benefits



Quietness.

The peaceful performance of the electric 'EV' mode, combined with the high-performance soundproofing materials throughout the engine and passenger compartments, delivers a uniquely tranquil driving experience.

Emissions.

By ensuring high-level fuel efficiency, Hybrid Synergy Drive® helps minimise the output of CO₂ and other harmful emissions. All of Toyota's hybrid vehicles are designed to comply with relevant global exhaust emissions regulations.

Fuel economy.

The aerodynamic styling of Toyota's hybrid vehicles, and clever pairing of an electric motor and robust petrol engine, deliver significant fuel economy. Each vehicle also provides ongoing feedback via its Multi Information Display (MID), so you can actively evaluate and change the way you drive for even greater efficiency.

Power.

Hybrid Synergy Drive® combines the power of two energy sources to deliver powerful, smooth acceleration. Your vehicle can be powered by electricity, petrol, or a combination of both – and it's discreet and seamless.

How the hybrid system works.

Starting off

The electric motor is used primarily and power stored in the battery is used to turn the motor.

Full acceleration

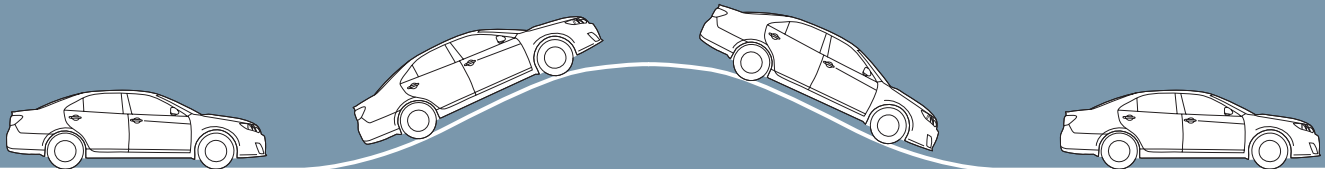
Power is provided by the petrol engine in addition to the electric motor. Power output is maximised for a very powerful acceleration.

Deceleration

The electric motor functions as a generator during deceleration and braking. Regenerated energy is used to recharge the battery.

At rest

Braking to a stop at a traffic light, the petrol engine is cut off and the car is brought to a gentle stop. The system automatically avoids wasteful idling to conserve fuel and stop CO₂ emission.





Safety first.

Whether it's commuting to work, weekend sport or on a trip away, you'll drive with confidence knowing Camry has been awarded the maximum 5-star ANCAP safety rating.

Seven SRS airbags, including driver's knee airbag, provide all round protection. The reverse camera⁶ lets you see what's behind while the parking sensors⁶ help you in and out of tight spaces.

When on the move, an intelligent Anti-lock Braking System (ABS) helps you stop quickly and safely while Traction Control (TRC) and Vehicle Stability Control (VSC) help you maintain grip on slippery surfaces and provide greater control when cornering.

The Pre-Collision Safety system⁷ (PCS) is standard on Atara SL and detects when a crash is imminent, then takes precautions including warning the driver, retracting the seatbelts of the front passengers and improving the brake performance through Brake Assist⁶ (BA), and finally automatically applying the brakes.

Blind Spot Monitor⁶ (BSM) is standard on Atara SL and uses radar to provide a visual warning if another vehicle is hidden in a blind spot while the Rear Cross Traffic Alert⁶ (RCTA) uses the same sensors to warn you of approaching traffic when reversing out of a parking space.

The Atara SL also has a windshield mounted camera as standard, and this allows you to switch on Lane Departure Alert⁶ (LDA) to automatically determine if you're leaving your lane and provide a visible and audible warning. The same camera controls the Automatic High Beam (AHB) that senses oncoming vehicles and dips the headlights automatically, then re-engages high beam once they have passed.

A. Front SRS airbag – Atara SL model shown

B. Blind Spot Monitor⁶ (BSM) – Atara SL model shown



Rain sensing wipers – Atara SL model shown

A Camry perfect for you.



Altise – The Altise sets the stage for the Camry experience.

- 2.5 litre Dual VVT-i petrol engine, or 2.5 litre Atkinson cycle 4-cylinder petrol engine with electric motor
- 6-speed automatic transmission with sequential shift
- LED Daytime Running Lamps (DRLs)
- 16" alloy wheels
- Electronically adjustable exterior mirrors with side indicators
- 60/40 split fold rear seat (60% folds on Hybrid models)
- Sunglass holder and lockable glove box
- Ten beverage holders
- Steering wheel mounted audio controls
- 6.1" screen audio display with CD player and AM/FM tuner
- USB input with iPod®⁸ connectivity
- Bluetooth®² hands-free phone and media streaming
- Six speakers
- Reverse camera
- Electric power steering
- Smart Entry and Start system (Hybrid model only)
- Cruise control
- Front and rear power windows
- Gear position indicator
- Speed-sensing auto door lock
- Auto on/off headlamps
- Multi information trip computer
- Seatbelt warning indicator
- Rear child-proof locks
- Seven SRS airbags – dual front, front side and full length curtain airbags and driver's knee airbag
- Anti-lock Braking System (ABS) with Electronic Brake-force Distribution (EBD) and Brake Assist (BA)
- Vehicle Stability Control (VSC) and Traction Control (TRC)



Atara S – Get set for an exhilarating ride.
With the features of the Altise, as well as:

- Sports driving mode with quick response paddle-shift technology (Petrol models only)
- Dual exhaust (Petrol models only)
- Sports grille
- Sports black headlamps
- 17" alloy wheels
- 'Atara' door scuff plates
- Sports combimeter (Petrol models only)
- Automatic dual-zone climate control air conditioning
- Electronically adjustable driver's seat
- Rear parking sensors



Atara SL – The ultimate in comfort and pure driving pleasure. With the features of the Atara S, as well as:

- Leather Accented seats
- Lip spoiler
- Electric rear sunshade
- Electronically adjustable driver's and front passenger seats
- Driver's seat memory function
- JBL premium audio with 7" screen display, Digital Radio,⁹ Satellite Navigation³ and SUNA™ Traffic Channel¹⁰
- Toyota Link⁴
- 10 speakers
- Rain sensing wipers
- Automatic high beam
- Electro chromatic rear-view mirror
- Reversing camera with moving guidelines
- Blind Spot Monitor (BSM) with Rear Cross Traffic Alert (RCTA)



Atara SX – Meet the sportiest member of the family.
With the features of the Atara S, as well as:

- 18" black alloy wheels
- Leather Accented sports seats
- Sports body kit including rear lip spoiler and sports rear bumper
- Sports pedals
- Smoked chrome upper grille
- Sports suspension

Your Camry. Your colour.

Camry is available in a choice of nine vibrant colours, each one specifically selected to accentuate its dynamic new exterior lines. Now all you have to do is choose which one is right for you.



A.



B.



C.



D.



E.



F.



G.



H.



I.

- A. Diamond White¹¹ 061
- B. Crystal Pearl¹¹ 070
- C. Silver Pearl¹¹ 1F7
- D. Magnetic Bronze¹¹ 452
- E. Graphite¹¹ 1G3
- F. Eclipse Black¹¹ 218
- G. Indigo¹¹ 8W6
- H. Wildfire¹¹ 3R3
- I. Ocean Mist¹¹ 8S0



Atara SL model shown with optional moonroof

Please take your seats.

Each Camry interior is carefully crafted with superior upholstery and stitching, so once inside, you not only see quality, you feel it too.

The fabric and trim combinations have been carefully selected to offer maximum comfort as well as using colours that complement each other and are easy on the eye.

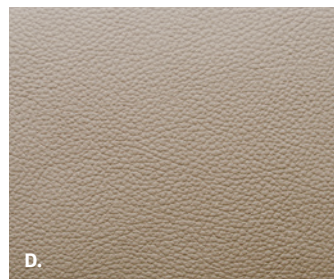
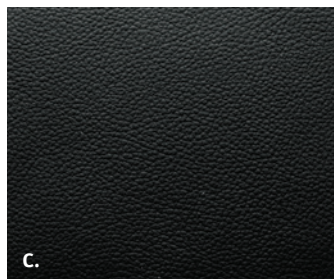
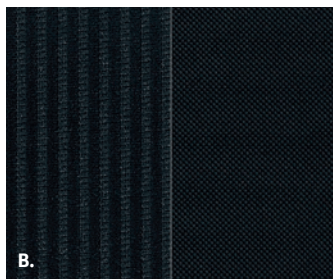
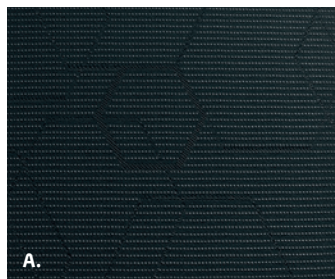
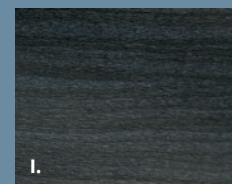
COLOUR GUIDE											
	Interior Seat Trim	Interior Finish	Diamond White	Crystal Pearl ¹¹	Silver Pearl ¹¹	Magnetic Bronze ¹¹	Graphite ¹¹	Eclipse Black ¹¹	Indigo ¹¹	Wildfire ¹¹	Ocean Mist ¹¹
Altise	Black Shadowflex Fabric (FA20)	Silver	•		•	•	•			•	•
Atara S	Black Dashflex Fabric (FB20)	Brushed Silver	•		•	•	•	•	•	•	•
Atara SL	Black Leather Accented (LA20)	Dark woodgrain-look		•	•	•	•	•	•	•	•
	Ivory Leather Accented (LA00)	Dark woodgrain-look		•	•	•	•	•	•	•	
Atara SX	Black and Raizen Leather Accented (LB21)	Sports Mesh	•		•		•	•	•	•	•

Interior seat trim

- A. Black Shadowflex Fabric
- B. Black Dashflex Fabric
- C. Black Leather Accented
- D. Ivory Leather Accented
- E. Black and Raizen Leather Accented

Interior finish

- F. Silver
- G. Brushed silver
- H. Sports Mesh
- I. Dark woodgrain-look





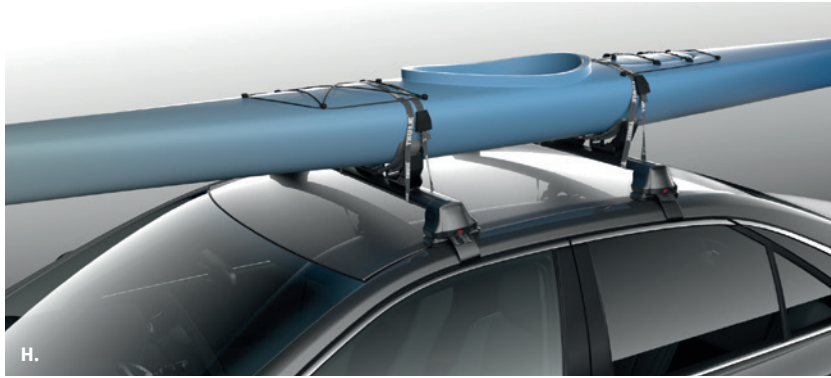
Altise Hybrid model shown

Personalise your drive.

Make the best better and add extra style to your Camry with Toyota Genuine Accessories. Choose your favourite accessories and make your Camry even more stylish to own and drive.

- A. **18" Alloy Wheels**
- B. **Mudguards**
- C. **Front Weathershields**
(Sold separately)
- D. **Bonnet Protector and Headlamp Covers** (Sold separately)
- E. **Roof Racks**
- F. **Ski/Snowboard Carrier**
(Roof Racks sold separately)
- G. **Bicycle Carrier**
(Roof Racks sold separately)





H.



I.



J.



K.



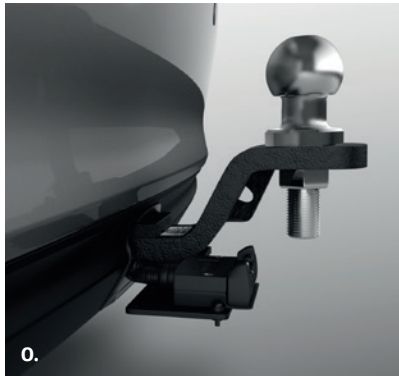
L.



M.



N.



O.



P.

- H. Kayak Carrier**
(Roof Racks sold separately)
- I. Door Handle Protection Film**
- J. Carpet Floor Mats**
Front and Rear set (Front set shown)
- K. Front Vest Seat Covers**
Available on Altise and Atara S only
- L. Scuff Guard**
- M. Front Corner Park Assist⁶**
Available on Altise, Atara S and Atara SX only

- N. Rear Park Assist⁶**
Available on Altise only
 - O. Towbar, Towball and Trailer Wiring Harness¹²** (Sold separately)
 - P. First Aid Kit**
- All accessories sold separately.

MECHANICAL SPECIFICATIONS		Petrol				Hybrid		
		Altise	Atara S	Atara SL	Atara SX	Altise	Atara S	Atara SL
Petrol Engine	Engine description	2.5 litre 4-cylinder petrol engine				2.5 litre Atkinson cycle 4-cylinder petrol engine		
	Engine code	2AR-FE				2AR-FE		
	Valve mechanism	16-valve Double Overhead Camshaft (DOHC), with Dual Variable Valve Timing with intelligence (VVT-i)				16-valve Double Overhead Camshaft (DOHC), with Variable Valve Timing with intelligence (VVT-i)		
	Max power (kW@rpm)/Max torque (Nm@rpm)	133 @ 6000 / 231 @ 4100	135 @ 6000 / 235 @ 4100			118 @ 5700 / 213 @ 4500		
	Bore x Stroke	90.0 X 98.0mm				90.0 X 98.0mm		
	Compression ratio	10.4:1				12.5:1		
Electric Motor	Max voltage/Max power/Max torque	-				650V / 105kW / 270Nm		
Hybrid System	System type	-				Series Parallel THS II		
	Combined power maximum output	-				151kW		
	Three driving modes	-				'Normal', 'ECO' and 'EV'		
	Battery type	-				Nickel-Metal Hydride (NiMH)		
Fuel	Fuel type octane no. (Minimum recommended)	91 RON unleaded petrol				91 RON unleaded petrol		
	Fuel economy – ADR81/02 combined cycle ¹³	7.8L/100km				5.2L/100km		
	Emissions – combined CO ₂ ¹³	183g/km				121g/km		
Transmission	Transmission	6-speed automatic transmission with sequential shift				Electronic Continuously Variable Transmission (e-CVT)		
	Paddle-shift	-	Quick response sports paddle-shift with sports mode			-		
Steering	Steering wheel	Tilt and reach adjustable steering wheel				Tilt and reach adjustable steering wheel		
	Steering operation	Electric Power Steering (EPS)				Electric Power Steering (EPS)		
Brakes	Front and rear	Front ventilated disc and rear solid disc				Front ventilated disc and rear solid disc		
	Park brake	Pedal type				Pedal type		
	Braking system	-				Regeneration braking system		
Suspension	Front	MacPherson strut type with stabiliser bar				MacPherson strut type with stabiliser bar		
	Rear	Dual link type with stabiliser bar				Dual link type with stabiliser bar		
	Sports	-	-	Optional	Standard	-		

CAMRY MODEL		Altise Petrol	Altise Hybrid	Atara S Petrol	Atara S Hybrid	Atara SL Petrol	Atara SL Hybrid	Atara SX Petrol
Dimensions¹⁴ and Weights	Overall length (mm)	4850	4850	4850	4850	4850	4850	4850
	Overall width (mm)	1835	1835	1835	1835	1835	1835	1835
	Overall height (mm)	1470	1470	1470	1470	1470	1470	1470
	Wheelbase (mm)	2775	2775	2775	2775	2775	2775	2775
	Kerb to kerb turning circle (mm)	11000	11000	11000	11000	11000	11000	11000
	Vehicle kerb weight ¹⁵ (kg)	1465	1610	1505	1610	1505	1610	1495
	Gross vehicle weight ¹⁶ (kg)	2100	2100	2100	2100	2100	2100	2100
	Gross trailer weight, braked/unbraked (kg)	1200/500	300/300	1200/500	300/300	1200/500	300/300	1200/500
	Cargo/boot capacity (L)	515	421	515	421	515	421	515
	Fuel tank capacity (L)	70	65	70	65	70	65	70
Wheels	Design and size	10-spoke 16" alloy	10-spoke 16" alloy	10-spoke 17" alloy	10-spoke 17" alloy	15-spoke 17" alloy	15-spoke 17" alloy	5-spoke 18" black alloy
	Spare wheel	16" steel	16" steel	17" alloy	17" alloy	17" alloy	17" alloy	16" steel
	Tyre size	215/60 R16	215/60 R16	215/55 R17	215/55 R17	215/55 R17	215/55 R17	225/45 R18
Exterior	Dual exhaust with diffuser			•		•		•
	Body colour exterior door handle	•	•	•	•	•	•	•
	Body colour rear garnish	•	•	•	•	•	•	•
	Acoustic front windscreen		•		•		•	
	Electrically adjustable exterior mirrors with side indicators	•	•	•	•	•	•	•
	Exterior mirrors with automatic dipping in reverse					•	•	
	Sports grille			•	•	•	•	•
	Bright chrome upper grille	•	•	•	•	•	•	
	Smoked chrome upper grille							•
	Lip spoiler					•	•	•
	Sports black headlamps			•	•	•	•	•
	LED Daytime Running Lamps (DRLs)	•	•	•	•	•	•	•

CAMRY MODEL		Altise Petrol	Altise Hybrid	Atara S Petrol	Atara S Hybrid	Atara SL Petrol	Atara SL Hybrid	Atara SX Petrol
Interior	Leather Accented steering wheel with paddle shifters			•		•		•
	Leather Accented seats					•	•	
	Leather Accented sports seats with power adjustable driver seat							•
	'Atara' door scuff plates			•		•		•
	Driver and passenger vanity mirror illumination	•	•	•	•	•	•	•
	Driver and front passenger power adjustable seats and driver's seat memory					•	•	
	60/40 split fold rear seats (60% folds in Hybrid models)	•	•	•	•	•	•	•
	Folding rear seat centre armrest	•	•	•	•	•	•	•
Instruments and Controls	Multi-information trip computer including – Trip A & B, odometer (km), outside temperature (C), fuel range (km), fuel consumption (L/100km), average speed (km/h)	•	•	•	•	•	•	•
	Energy flow monitor with ECO drive level display		•		•		•	
	4.2" colour Multi Information Display (MID)		•		•	•	•	
	Automatic high beam					•	•	
	Auto-on/off headlamps	•	•	•	•	•	•	•
	12V power accessory socket	•	•	•	•	•	•	•
	Gear position indicator in dash	•	•	•	•	•	•	•
	Tachometer	•		•		•		•
	Sports combimeter			•				•
	Smart Entry and Start system		•	•	•	•	•	•
	Manual air conditioning	•						
	Dual-zone automatic climate control air conditioning		•	•	•	•	•	•
	Power windows – front and rear	•	•	•	•	•	•	•
	Electric rear sunshade					•	•	
	Electro chromatic rear-view mirror					•	•	
	Rain sensing wipers					•	•	
Cruise control	•	•	•	•			•	
Active cruise control					•	•		
Storage	Lockable glove box	•	•	•	•	•	•	•
	Centre console with sliding lid	•	•	•	•	•	•	•
	Storage recess x 2	•	•	•	•	•	•	•
	Sunglass holder – front overhead console	•	•	•	•	•	•	•
	Door pockets – driver and front passenger	•	•	•	•	•	•	•
	Beverage holders x 10 (front centre console, front and rear doors, rear centre armrest)	•	•	•	•	•	•	•

CAMRY MODEL		Altise Petrol	Altise Hybrid	Atara S Petrol	Atara S Hybrid	Atara SL Petrol	Atara SL Hybrid	Atara SX Petrol
Entertainment	6.1" screen audio display, single CD player, AM/FM tuner	•	•					
	6.1" VGA screen audio display with voice recognition and Toyota Link ⁴			•	•			•
	JBL premium audio with 7" screen display, Digital Radio (DAB+), ⁹ Satellite Navigation, ³ SUNA™ Traffic Channel ¹⁰ and Toyota Link ⁴					•	•	
	3.5mm AUX + USB input with iPod® ⁸ connectivity	•	•	•	•	•	•	•
	Surround sound speakers	6	6	6	6	10	10	6
	Steering wheel mounted audio controls	•	•	•	•	•	•	•
	Hands-free Bluetooth® ² with media streaming	•	•	•	•	•	•	•
Safety	Pre-Collision Safety system					•	•	
	Blind Spot Monitor (BSM) and Rear Cross Traffic Alert (RCTA)					•	•	
	Anti-lock Braking System (ABS) with Electronic Brake-force Distribution (EBD) and Brake Assist (BA)	•	•	•	•	•	•	•
	Vehicle Stability Control (VSC) and Traction Control (TRC)	•	•	•	•	•	•	•
	Hill-start Assist Control (HAC)		•		•		•	
	Lane Departure Alert ⁶ (LDA)					•	•	
	Reverse camera with fixed guidelines	•	•	•	•	•	•	•
	Reverse camera with moving guidelines					•	•	
	Rear parking sensors x 2			•	•			•
	Front and rear parking sensors					•	•	
	Child seat anchorage points x 3	•	•	•	•	•	•	•
	Head restraints – front and rear seats	•	•	•	•	•	•	•
	Seven SRS airbags – dual front, front side, full length curtain airbags and driver's knee airbag	•	•	•	•	•	•	•
	Seatbelt warning buzzer and lights for all occupants	•	•	•	•	•	•	•
	3-point seat belt for all occupants (driver and front passenger with pre-tensioner and force limiter)	•	•	•	•	•	•	•
Maximum 5-star ANCAP safety rating	•	•	•	•	•	•	•	
Child proof locks – rear	•	•	•	•	•	•	•	
Security	Immobiliser with alarm	•	•	•	•	•	•	•
	Speed sensing auto door lock	•	•	•	•	•	•	•
	Remote central locking including boot release on remote	•	•	•	•	•	•	•
	Panic alarm on remote	•	•	•	•	•	•	•
Options¹⁷	Optional wheels with sports suspension					18" silver metallic alloys (with 16" steel spare wheel)		
	Moonroof – glass tilt and slide					Optional	Optional	Optional

The Toyota Advantage.

Every Toyota gives you a lifetime of advantages. That's what makes it a Toyota. You'll enjoy legendary Toyota value from the moment you drive away, and you'll continue to appreciate the quality, safety and innovation that's engineered into each model, every day you drive.



A smarter way to buy.

Toyota Access puts you in complete control when buying a new car.¹⁸ Drive out of the Dealership with a clear road ahead then drive back a few years later with more options at your disposal than ever before. Whatever stage you're at in life, Toyota Access puts you in the driver's seat with ongoing flexibility and assurance. To discover Toyota Access for yourself visit toyota.com.au/access



Capped price servicing.¹⁹

A new Toyota means you don't have to worry about unexpected service costs. Every Toyota comes with a low, capped price service cost for a set number of years/kilometres. Pay the same low capped price from one eligible logbook service to the next for up to four years or 75,000km, whichever occurs first (including Genuine parts, labour and fluids). For the full benefits consult a Toyota Dealer or visit toyota.com.au/advantage



We've got your back.

Every new Toyota is built to exceptional standards, backed by a three year/100,000km warranty²⁰ giving you the peace of mind to feel confident for years to come. In the unlikely event that you need them, every Toyota Service Centre is committed to providing any warranty repairs you may need. They have the technology, the tools, and the skilled personnel to keep your Toyota in excellent condition.



Your HV (Hybrid) battery goes further.²¹

The HV (Hybrid) battery used by Toyota, requires no maintenance, charges automatically while you drive and never needs to be plugged into a power supply.

The HV (Hybrid) battery is recyclable and your Toyota dealership can arrange recycling at no cost.



Finance to get you going.

If you need a little help, Toyota Finance²² can offer you a wide range of vehicle financing. With Toyota Finance, you'll have the peace of mind of dealing with one of Australia's leading vehicle finance corporations with over 30 years experience. And with a range of flexible products and services to suit almost every need and circumstance, Toyota Finance can help find the right package for you or your business.



Even more protection.

Our Comprehensive Motor Vehicle insurance²³ policy is packed with great benefits including; agreed value cover or New vehicle replacement cover for Toyota vehicles damaged beyond repair within 3 years of original registration, Genuine Parts Promise and Lifetime Repair Guarantee. And our Toyota Insurance Factory Approved Extended Warranty Insurance provides protection that continues after your Toyota New Vehicle Warranty ends.



Extend your peace of mind.

Whether it's a flat tyre, lost keys or a flat battery, Toyota Extra Care Roadside Assist²⁴ is never more than a phone call away. Available 24 hours a day, seven days a week, every day of the year, you'll have peace of mind, whatever your emergency. With two levels of cover available, Toyota Extra Care Roadside Assist provides one of the most professional, reliable, and technologically advanced assistance networks in Australia.

Disclaimers and Notice.

- 1 Not all devices will be compatible. Functionality varies depending on device.
- 2 The Bluetooth® word mark is owned by Bluetooth SIG, Inc. Not all devices will be compatible and functionality varies depending on the device.
- 3 Current navigation mapping database encompasses major capital and primary national road networks and offers some coverage in regional areas.
- 4 Toyota Link is available on certain vehicle models and grades only. Toyota Link services rely on data from the driver's compatible mobile phone and information provided by third parties. Availability is dependent on a number of factors, including the availability of third party information, mobile service, sufficient mobile data allowance and GPS satellite signal reception. Mobile usage is at the user's cost. Toyota Australia reserves the right to add, remove or modify applications. Further information is provided at www.toyota.com.au/toyotalink
- 5 Not available on the Altise petrol model.
- 6 Reversing Camera/Brake Assist/Park Assist/ Front and Rear Sensors/Blind Spot Monitor/Lane Departure Alert/Rear Cross Traffic Alert is a driver assist device only and should not be used as a substitute for safe driving practices. The area into which the vehicle is driven must be visually monitored by the driver.
- 7 PCS is a driver assist technology and should not be used as a substitute for safe driving practices. Driver should continue to monitor the road.
- 8 iPod® is a trademark of Apple, Inc. Not all devices will be compatible and functionality will vary depending on the device.
- 9 Digital radio station coverage dependent on vehicle location.
- 10 SUNA™ GPS Traffic Updates are only available in metropolitan Adelaide, Brisbane, Canberra, Gold Coast, Melbourne, Perth and Sydney; it operates from information provided by Intelematics Australia and may not cover all road incidents and congestion. See sunatraficc.com.au for details.
- 11 Paint featured is an optional extra at additional cost. Not all colours available on all models, see colour guide for details of availability.
- 12 Towing capacity is subject to regulatory requirements, towbar and vehicle design and towing equipment limitations. Ask your Dealer for Toyota Genuine Towbar capacity and availability details.
- 13 Fuel consumption and emissions vary depending on driving conditions/style, vehicle conditions and options/accessories.
- 14 Some vehicle dimension figures are approximate and vary due to options and accessory fitment.
- 15 Kerb, tare and payload weights are nominal and vary depending on options and accessories.
- 16 Gross Vehicle Mass (GVM) is the total permissible combined weight of the vehicle, including occupants, fuel and cargo.
- 17 Optional extra at additional cost.
- 18 Guaranteed Future Value (GFV) is the minimum value of your new Toyota at the end of your finance contract, as determined by Toyota Finance. If you decide to

IMPORTANT NOTICE – PLEASE READ:

Toyota Genuine Accessories are not applicable to all models/grades. Consider the mass of your load to ensure you will not exceed the maximum allowable individual axle capacity, Gross Vehicle Mass and/or Gross Combined Mass of the vehicle. Refer to the current Accessories brochure or visit toyota.com.au for details on warranty

Toyota Australia has used its best endeavours to ensure material is accurate at the time of printing. All information must be confirmed with your Toyota Dealer at the time of ordering, as specifications and details will change over time. Colours displayed are a guide only and may vary from actual colours. To the extent permitted by law, Toyota Australia will not be liable for any damage, loss or expense incurred as a result of reliance

return your car to Toyota at the end of your term, Toyota Finance will pay you the agreed GFV amount which will be put against your final payment, subject to fair wear and tear conditions and agreed kilometres being met. The information provided is general in nature. You should seek your own financial advice to determine whether Toyota Access is appropriate for your individual circumstances. Terms and conditions, fees and charges apply. Toyota Access Guaranteed Future Value (GFV) products are available to approved customers of Toyota Finance, a division of Toyota Finance Australia Limited ABN 48 002 435 181, Australian Credit Licence 392536.

- 19 Maximum payable for standard scheduled logbook servicing (normal operating conditions) until first of four years or 75,000km (whichever occurs first), up to the first five services. Excludes Government & Rental vehicles. Contact your Toyota Dealer or go to toyota.com.au/advantage for other exclusions, eligibility and full details.
- 20 New Vehicle Warranty expires three years from date of first delivery or 100,000km, whichever occurs first. Refer to the warranty conditions. The New Vehicle warranty does not limit and may not necessarily exceed your rights under the Competition and Consumer Act 2010.
- 21 The HV (Hybrid) Battery Warranty expires 8 years from date of first delivery or 160,000kms, whichever occurs first. This warranty is comprised of the 3 year Toyota New Vehicle Warranty and an additional 5 year Toyota Australia Hybrid (HV) battery warranty. Refer to warranty conditions. This warranty does not limit and may not necessarily exceed your rights under the Competition and Consumer Act 2010.
- 22 Toyota Finance is a division of Toyota Finance Australia Limited ABN 48 002 435 181, Australian Credit Licence No 392536.
- 23 Terms and conditions apply. This advice does not take into account any of your particular objectives, financial situation or needs. For this reason, before you act on this advice, you should consider the appropriateness of the advice taking into account your own objectives, financial situation and needs. Before making a decision about any of the insurance products, please refer to the current Product Disclosure Statement (PDS) for the relevant product available from participating Dealers, via the Toyota Insurance website at toyotainsurance.com.au or by calling 137 200. Toyota Insurance is a division of Aioi Nissay Dowa Insurance Co., Ltd. ABN 39 096 302 466 AFSL Number 254489 (Andia). The Insurer is Andia. Our insurance policies do not change or take away your rights under the Australian Consumer Law. Your right to claim under our policies for the benefits covered is in addition to other rights and remedies you have under the law in relation to your vehicle. However, you can choose to make a claim under any of our policies even if you have rights under the law.
- 24 Toyota Extra Care is administered by Toyota Finance, a division of Toyota Finance Australia Limited ABN 48 002 435 181, Australian Credit Licence 392536.

and toyota.com.au/vehiclepayload for details on vehicle payload, to help determine Accessories suitable for your vehicle. Accessory colours shown may vary from actual colour due to the printing process.

on the information and photos contained in this material. Material distributed in Western Australia by or on behalf Prestige Motors Pty Ltd (for vehicles) and by Eastpoint Pty Ltd (for parts/accessories). Toyota Australia makes no warranties regarding (and will not be liable for) accuracy of materials distributed in Western Australia. PART NUMBER: TYCAMRYBRO. PROOF HQ: T2015-000978. PRINTED: MAY 2015. GTP1540.



Atara S Petrol model shown