

FJ Cruiser

The Legend Lives.



TOYOTA

toyota.com.au



Oh what a feeling!

Get ready for a whole new adventure.

When it comes to seriously tough DNA, FJ Cruiser comes from a long line of uncompromising legends.

Evoking the spirit of the immortal FJ40, it's born and bred to never be defeated or shy away from a challenge.

FJ Cruiser is built to go anywhere, do anything and take on whatever crosses its path.

Inside and out, you'll discover a vehicle of exceptional quality with around-town comfort, perfectly matched by outback-tested dependability, durability and grunt.







Rugged and retro inspired by design.

If first impressions count, one look at the FJ Cruiser tells you it's no-nonsense tough.

A reinforced steel chassis means it's as close to indestructible as you can get. And with a frame modelled from our very own Prado, it's clearly built to last.

There's also purposeful style and space to match the muscle, with 17" alloy wheels, a large body, high waistline and a wide, roomy cabin. Load up the crew with ease through the wide access doors, and the large rear glass hatch offers quick access to the cargo area when you're out and about.

The bold athletic profile combined with short front and rear overhangs means FJ Cruiser always looks ready for action. While the round headlamps and Toyota grille badge give a nod to its illustrious heritage.

Oversize silver painted exterior mirrors and silver bumper corners, plus dirt-catching, spray-limiting black fender flares complete the FJ Cruiser's rugged head-turning appeal.



FJ shown with optional accessories



Tough on the outside, spacious within.

Step inside the FJ Cruiser and you'll discover a versatile interior that brilliantly complements the exterior's uncompromising theme.

The body coloured dash and door trims are matched with simple, straight interior cabin lines, providing you with wide-open comfort and style inside.

You'll find the uniquely styled dashboard is built for action, with large multi-directional air vents and oversize switches designed to be easy to use when things start getting rough.

Such smart functionality continues to meet form with the wide, comfortable side armrests incorporating large, easy-to-grab door grips.

And every seat features wipe-down fabric facings that are both water repellent and breathable, while underfoot the durable rubber floor is ready to deal with the toughest treatment.



Built to handle your every demand.

While FJ Cruiser gets on with the tough stuff outside, you'll be riding sweet inside.

All five seats are shaped for serious support with fold-down armrests upfront and a 60:40 split fold rear seat allowing you to pack stacks of outdoor gear in the back.

You'll receive all the information you need via a classic looking instrument panel, with essential instruments complemented by indicators for; Active-Traction Control (A-TRC), Vehicle Stability Control (VSC), Cruise Control and CRAWL Control.¹

Let the FJ Cruiser's GPS Satellite Navigation System² help guide you outback then safely home again. Enjoy your favourite tunes on a CD player/sound system featuring eight

speakers, including 'roof exciters', to spread sound evenly throughout the cabin. Plus you can connect all your favourite devices via Bluetooth^{®3} or via a USB for compatible iPods^{®4} and MP3 players, including video capability.

And you can operate them all by using the premium steering wheel with audio controls or the centrally mounted touch screen 6.1" LCD Multi Information Display and control unit, which also responds to voice commands.

Regardless of the weather, it's always fine inside the FJ Cruiser thanks to powerful air conditioning. Then once you've reached your destination, passengers in the back can leap out with ease through reverse opening doors with rear seat assist grips.



Glass hatch



Spare wheel cover and reversing camera⁵



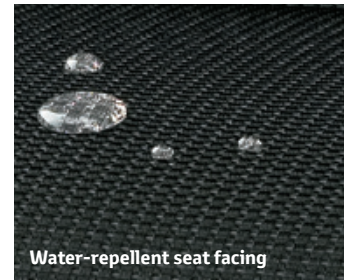
Rear-view mirror with integrated 3.3" reversing camera display⁵



Rear cargo space



Multi Information Display (MID)



Water-repellent seat facing



Cargo room



Rear access door design

Finely tuned muscle on the move.

With toughness comes power, and the FJ Cruiser's got it in spades. Packing a 4.0 litre V6 engine with dual VVT-i, you'll find 200kW of grunt and 380Nm of torque under your right foot to give awesome performance, on road or off. All seamlessly delivered by a 5-speed Automatic Transmission with part time 4WD to maximise fuel efficiency when travelling around town.

Harnessing such power also requires uncompromising grip, whatever the terrain. When the going gets tough, switch to the 4WD system with selectable H4-H2 and L4 ranges for maximum control. Once low range 4WD is selected, activate the Rear Differential Lock (at the touch of a button) to disable the Anti-lock Braking System (ABS), Brake Assist, and Vehicle Stability Control, then enjoy genuine Four-Wheel Driving at its best.

And the FJ Cruiser is no overweight heavyweight, its enviable power-to-weight ratio of 102kW per tonne is seriously hard to beat. Plus it delivers an impressive 2250kg towing capacity,⁶ all kept safely under control with large ventilated disc brakes, front and rear.

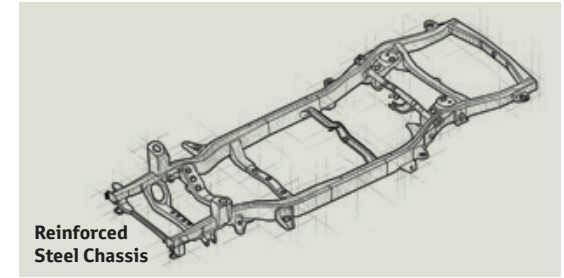
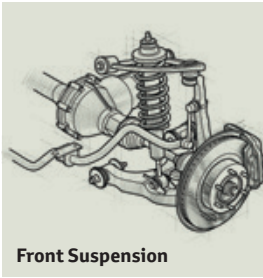
With a 72L fuel tank and a large 87L subtank, you'll also carry enough fuel to head off on your own adventure.



Go your own way.

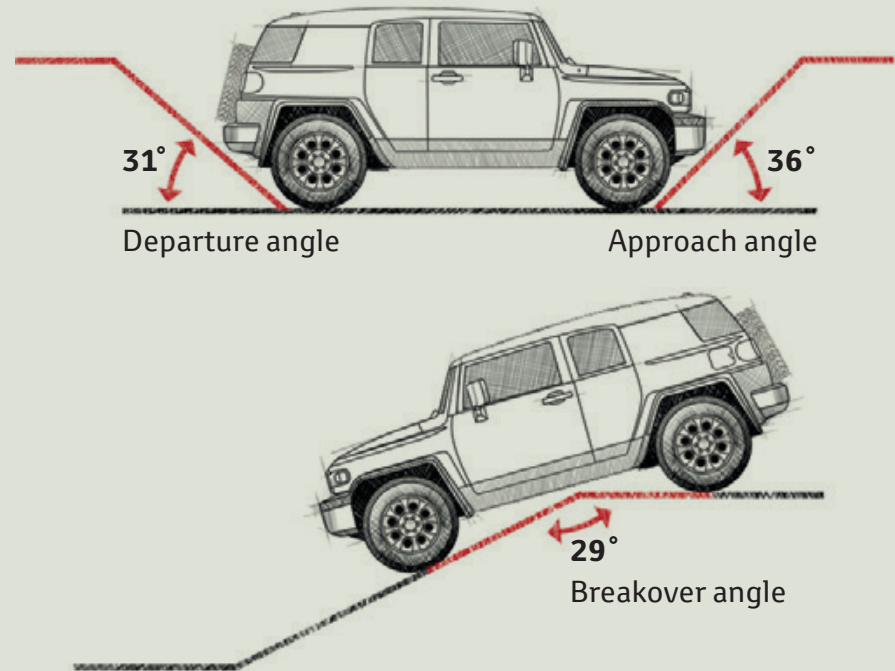
Make no mistake, FJ Cruiser is a formidable off-road machine. It's been designed to 'go anywhere, do anything,' and is packed with features to ensure it succeeds.

With an impressive 224mm running clearance⁷ and heavy duty front double wishbone suspension, tuned especially for Australian conditions, FJ Cruiser is built to handle anything you throw at it. And the 36° approach angle,⁷ 31° departure angle⁷ and 29° breakover angle⁷ are the best in the Toyota 4WD range, meaning FJ Cruiser takes the steepest descents and ascents in its stride, as well as being able to safely negotiate large obstacles in its path.



Approach, departure and breakover angles

Before taking on steep slopes or crossing over a ridge, be aware of your clearance angles. The greater the approach and departure angles, the steeper the slope you can drive onto or off without scraping your bumpers, while a greater breakover angle helps avoid scrapes on the undercarriage.





FJ shown with optional accessories

Gripping technology.



When things start getting slippery, Active Traction Control (A-TRC) keeps you in control. By ensuring excellent Limited Slip Differential (LSD) capability, A-TRC eliminates wheel spin by automatically distributing the power to the tyres with the best grip – even in mud or split surfaces with different levels of grip.

On especially steep or slippery surfaces, CRAWL Control¹ offers the ultimate in off-road driving competence. CRAWL Control¹ allows you to maintain a low constant speed by automatically and independently controlling both engine power and brake input to each wheel, allowing you to concentrate on manoeuvring more effectively and safely on challenging surfaces. A bold Multi Information Display mounted high on the dashboard provides compass and inclinometer function to assist your off-road driving experience.

Regular pressure



Reduced pressure increases footprint



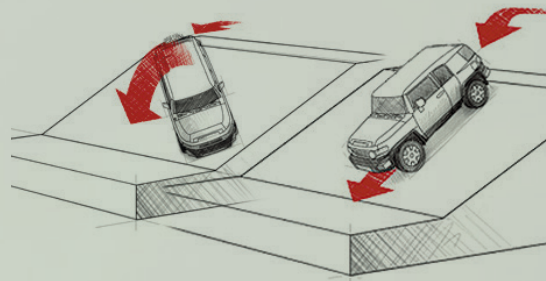
The key to driving in sand is to stay on top of it. Reducing tyre pressure, or airing down, improves 'flotation' by creating a wider footprint and distributing weight across a larger area. A good rule of thumb is to reduce the tyre profile by about 25%. And always remember to reinflate the tyres to proper air pressure once you're off the sand.

The correct approach.

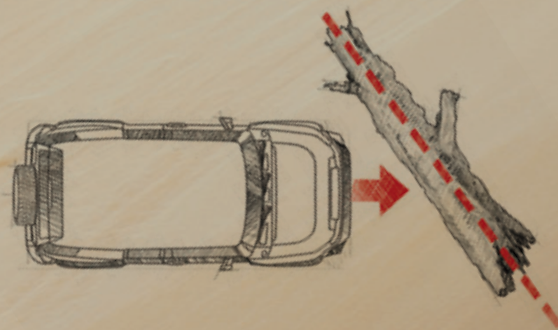


Incorrect angle

Correct angle



Before tackling a steep hill, inspect it first on foot. With the transfer case in Low, attack the slope at a 90° angle to help avoid rolling over. Ascend in a gear high enough to prevent wheelspin, but low enough to provide power. Descend slowly in 1st gear, using engine braking, not the brakes, to maintain traction. Also, watch your clearance angles at the top and bottom.



When faced with a large obstacle, like a rock, fallen tree or gully, the best way to take advantage of your vehicle's ground clearance and avoid damaging your undercarriage is to attack it diagonally. If you should happen to make contact, the FJ is armed with standard skid plates.

A tough nut to crack.

Sure it's tough, but FJ Cruiser also plays it safe with an impressive array of features to help protect you and your passengers.

With six SRS airbags – driver and front passenger, front-seat side airbags and full-length side curtain-shield airbags – every passenger is protected from impact.

On the road you'll benefit from the enhanced safety of Vehicle Stability Control (VSC) that uses electronic sensors in conjunction with both the Anti-lock Braking System (ABS) and Active Traction Control (A-TRC) to help correct any potential oversteer or understeer when cornering. In the event of an emergency, Brake Assist (BA) automatically applies extra force to the brake pedal to ensure the shortest and safest possible braking distance, the Emergency Locking Retractor (ELR) seatbelts will lock-up to help keep the front seat passengers safe and the three child anchorage points in the rear are there to help take care of the little ones.

The electro-chromatic rear view mirror automatically adjusts to reduce glare at night and also includes a rear-view monitor that appears the moment you select reverse gear. Plus the reverse parking sensors⁵ help make reversing in tight spaces safer and easier.



VSC and A-TRC

Front wheel skid control

Rear wheel skid control



Inward moment



Outward moment

ABS (Anti-lock Brake System)

With ABS



Without ABS



Braking Point

Active Headrest



Active Headrest not activated

Active Headrest activated

Pretensioner and Force Limiter



Pretensioner activated and Force Limiter not activated

Pretensioner and Force Limiter activated



FJ shown with optional accessories

FJ Cruiser Key Features.



- 4.0 litre V6 petrol engine with Dual VVT-i
- 5-speed CRAWL Control¹
- 72L fuel tank and 87L Sub Tank
- Easy clean interior with water repellent seats
- Single-disc in-dash CD player with 6.1" LCD display, MP3 compatibility, AM/FM tuner and Satellite Navigation²
- Six SRS airbags
- 17" Alloy wheels
- Outstanding off-road 4WD capabilities
- Reversing camera and rear parking sensors⁵

FJ Cruiser model in Orange Clay shown

An uncompromising choice of colours.

What's your shade of tough? With FJ Cruiser you can choose from a range of colours that'll look equally at home, wherever your journey takes you. But it's a tough choice deciding which one.

NOTE: All FJ Cruisers come with White Roof



Sandstorm



Retro Blue



French Vanilla



Jungle Green



Ebony



Orange Clay



Cement⁸

Tough stuff all round.

We all follow different tracks. So whether you're heading out into the unknown or simply driving around town, you can personalise your FJ Cruiser to suit your style. So check out the range of tough Genuine Toyota Accessories and see how you can make your FJ Cruiser even more you.



Jungle Green FJ Cruiser accessorised with Roof Racks, Rock Rails, Alloy Nudge Bar, Left and Right Hand Side Weathershields, Headlamp Covers and Bonnet Protector. Accessories sold separately.



Alloy Nudge Bar



Rubber Floor Mats



Headlamp Cover and Bonnet Protector
Sold separately



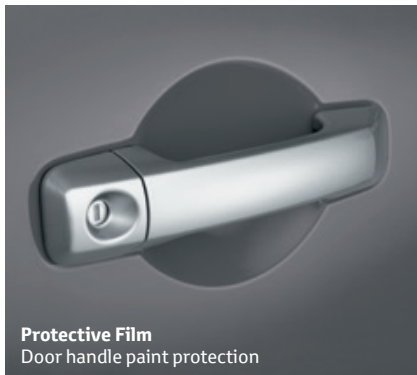
All Weather Rubber Cargo Mat



Rock Rails



Roof Rack System⁹



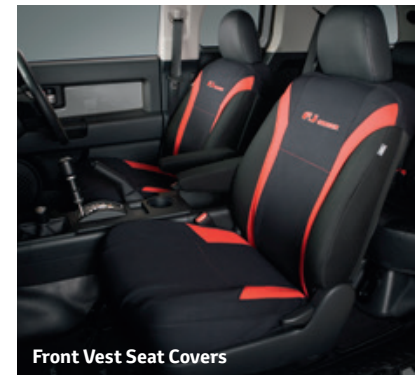
Protective Film
Door handle paint protection



Towbar, Towball and Trailer Wiring Harness⁶
Sold separately



Weathershields



Front Vest Seat Covers

MECHANICAL SPECIFICATIONS		4.0 litre V6
Engine	Name	1GR-FE
	Displacement (cm ³)	3956
	Max power (kW@rpm)	200@5600
	Max torque (Nm@rpm)	380@4400
	Valve train	24-valve DOHC, with Dual VVT-i
	Fuel system	EFI
	Bore x Stroke (mm)	94.0 x 95.0
	Compression ratio	10.4:1
Fuel	Fuel type	Petrol
	Fuel economy (L/100km) ¹⁰	11.4
	Fuel capacity (Litres)	72L (+ 87L sub tank)
Transmission	Transmission	5-speed automatic
	Gear ratios – automatic transmission	1st 3.520; 2nd 2.042; 3rd 1.400; 4th 1.000; 5th 0.716; Reverse 3.224
	Differential gear ratio (High/Low)	1.000/2.566
	Driveline	4WD
Steering, Brakes and Suspension	Steering system	Rack & Pinion
	Steering operation	Hydraulic power steering
	Turning circle – kerb to kerb (m)	12.4
	Brake control system	Anti-lock Braking System (ABS) with Electronic Brake-force Distribution (EBD), Brake Assist (BA), Vehicle Stability Control (VSC) and Active Traction Control (A-TRC)
	Front	Double wishbone
	Rear	5 link suspension system
Dimensions and Weights	Overall length (mm)	4670
	Overall width (mm)	1905
	Overall height (mm)	1830
	Wheelbase (mm)	2690
	Front and rear track (mm)	1650
	Running clearance (mm)	224
	Kerb weight (kg) ¹¹	2095
	Gross vehicle mass (kg) ¹²	2510
	Approach angle (degrees)	36
	Departure angle (degrees)	31
	Brake over angle (degrees)	29
Capacities	Seating capacity	5
	Cargo space (floor to ground)	754
	Towing capacity (kg) (with trailer brakes/ without trailer brakes) ⁶	2250/750

FJ CRUISER KEY FEATURES		
Wheels	17" Alloy wheels	•
Exterior	Fog lamps (rear)	•
	Manual headlamp levelling	•
	Halogen headlamps	•
	Power adjustable exterior mirrors	•
	Privacy glass	•
	Full size spare alloy wheel	•
	Front and rear mudguards	•
Interior	60:40 Split fold rear seat	•
	Driver 8-way and front passenger 4-way manual seats	•
	Accessory connector (2 in front)	•
	Water repellent fabric seats	•
	Premium steering wheel with audio, MID and telephone controls	•
Instruments and Controls	Cruise Control	•
	Manual air conditioning	•
	Front and rear windshield wipers	•
	Multi Information Display (MID)	•
	Power windows (driver with auto up/down)	•
	Electro Chromatic mirror	•
Safety	Driver and front passenger front and side SRS airbags, driver, front passenger and 2nd row curtain shield airbags	•
	Rear parking sensor (2 head kit)	•
	Reversing Camera (displayed within rear view mirror) ⁵	•
	3-point type emergency locking retractor seat belts	•
Off-road Capabilities	5-speed CRAWL Control ¹	•
	Active Traction Control (A-TRC)	•
	Rear differential lock	•
	Part time 4x4 system	•
Security	Engine immobiliser system	•
	Theft deterrent system (alarm)	•
Storage	Cup holders and bottle holders	•
	Driver and front passenger seat back map pockets	•
Sound System	Single-disc in-dash CD player with 6.1" LCD touchscreen, MP3 compatibility and AM/FM tuner	•
	AUX input for portable audio players, USB input for some iPod ^{®4} /USB memory sticks	•
	Satellite Navigation ²	•
	Bluetooth [®] capabilities ³	•
	8 speakers	•

The Toyota Advantage.

Every Toyota gives you a lifetime of advantages. That's what makes it a Toyota. You'll enjoy legendary Toyota value from the moment you drive away, and you'll continue to appreciate the quality, safety and innovation that's engineered into each model, every day you drive.



 **TOYOTA ACCESS**

A SMARTER WAY TO BUY

A smarter way to buy.

Toyota Access puts you in complete control when buying a new car.¹³ Drive out of the Dealership with a clear road ahead then drive back a few years later with more options at your disposal than ever before. Whatever stage you're at in life, Toyota Access puts you in the driver's seat with ongoing flexibility and assurance. To discover Toyota Access for yourself visit toyota.com.au/access



TOYOTA FINANCE

EASY FINANCE OPTIONS

Finance to get you going.

If you need a little help, Toyota Finance¹⁶ can offer you a wide range of vehicle financing. With Toyota Finance, you'll have the peace of mind of dealing with one of Australia's leading vehicle finance corporations with over 30 years experience. And with a range of flexible products and services to suit almost every need and circumstance, Toyota Finance can help find the right package for you or your business.

 **TOYOTA SERVICE ADVANTAGE**

CAPPED PRICE SERVICING

Capped price servicing.¹⁴

A new Toyota means you don't have to worry about unexpected service costs. Every Toyota comes with a low, capped price service cost for a set number of years/kilometres. Pay the same low capped price from one eligible logbook service to the next for up to three years or 60,000km, whichever occurs first (including Genuine parts, labour and fluids). For the full benefits consult a Toyota Dealer or visit toyota.com.au/advantage



TOYOTA INSURANCE

GENUINE TOYOTA COVER

Even more protection.

Our Comprehensive Motor Vehicle insurance policy is packed with great benefits including; choice of agreed value or market value, New vehicle replacement cover for Toyota vehicles damaged beyond repair up to 3 years/100,000km,¹⁷ Genuine Parts Promise and Quality Repair Guarantee. And our Toyota Insurance Factory Approved Extended Warranty Insurance provides protection that continues after your Toyota New Vehicle Warranty ends.

 **TOYOTA WARRANTY**

PEACE OF MIND

We've got your back.

Every new Toyota is built to exceptional standards, backed by a three year/100,000km¹⁵ warranty, giving you the peace of mind to feel confident for years to come. In the unlikely event that you need them, every Toyota Service Centre is committed to providing any warranty repairs you may need. They have the technology, the tools, and the skilled personnel to keep your Toyota in excellent condition.



TOYOTA EXTRA CARE

PEACE OF MIND

Extend your peace of mind.

Whether it's a flat tyre, lost keys or a flat battery, Toyota Extra Care Roadside Assist is never more than a phone call away. Available 24 hours a day, seven days a week, every day of the year, you'll have peace of mind, whatever your emergency.¹⁸ With two levels of cover available, Toyota Extra Care Roadside Assist provides one of the most professional, reliable, and technologically advanced assistance networks in Australia.

Disclaimers and Notice.

- 1 CRAWL Control is a driver assist technology and should not be used as a substitute for safe driving practices. Areas into which the vehicle is driven must be visually monitored.
- 2 Current navigation mapping database encompasses major capital and primary national road networks and offers some coverage in regional areas.
- 3 The Bluetooth® word mark is owned by Bluetooth SIG, Inc. Not all devices will be compatible and functionality varies depending on the device.
- 4 iPod® is a trademark of Apple, Inc. Not all devices will be compatible and functionality will vary depending on the device.
- 5 Reversing Camera/Park Assist/Sonar Parking is a driver assist device only and should not be used as a substitute for safe driving practices. The area into which the vehicle is driven must be visually monitored by the driver.
- 6 Towing capacity is subject to regulatory requirements, towbar and vehicle design and towing equipment limitations. Ask your Dealer for Toyota Genuine Towbar capacity and availability details.
- 7 Some vehicle dimension figures are approximate and vary due to options and accessory fitment.
- 8 Paint featured is an optional extra at additional cost.
- 9 Roof racks sold separately.
- 10 Fuel consumption varies depending on driving conditions/style, vehicle conditions and options/accessories. Source of fuel consumption data: ADR81/02 combined.
- 11 Kerb, tare and payload weights are nominal and vary depending on options and accessories.
- 12 Gross Vehicle Mass (GVM) is the total permissible combined weight of the vehicle, including occupants, fuel & cargo.
- 13 Guaranteed Future Value (GFV) is the minimum value of your new Toyota at the end of your finance contract, as determined by Toyota Finance. If you decide to return your car to Toyota at the end of your term, Toyota Finance will pay you the agreed GFV amount which will be put against your final payment, subject to fair wear and tear conditions and agreed kilometres being met. The information provided is general in nature. You should seek your own financial

Toyota Genuine Accessories are not applicable to all models/grades. Consider the mass of your load to ensure you will not exceed the maximum allowable individual axle capacity, Gross Vehicle Mass and/or Gross Combined Mass of the vehicle. Refer to the current Accessories brochure or visit toyota.com.au for details on

IMPORTANT NOTICE – PLEASE READ:

Toyota Australia uses its best endeavours to ensure this material is correct when published. You must check with your authorised Toyota dealer when ordering to ensure the vehicle with your chosen specifications, equipment and colour is available and that the vehicle can be delivered within the timeframe suitable to you. When ordering accessories, you must check with your authorised Toyota dealer to ensure the accessory's design, features and colours are available and will fit your vehicle. Please also consider the mass of your load to ensure you will not exceed the maximum allowable individual axle capacity, Gross Vehicle Mass and/or Gross Combined Mass of the vehicle. Refer to toyota.com.au/payload for further details. Colours displayed here are a guide only and may vary from actual colours due to printing/display processes. Certain accessories when fitted will require the removal of standard equipment.

advice to determine whether Toyota Access is appropriate for your individual circumstances. Terms and conditions, fees and charges apply. Toyota Access Guaranteed Future Value (GFV) products are available to approved customers of Toyota Finance, a division of Toyota Finance Australia Limited ABN 48 002 435 181, Australian Credit Licence 392536.

- 14 Maximum payable for standard scheduled logbook servicing (normal operating conditions) until first of four years or 75,000km (whichever occurs first), up to the first five services. Excludes Government and Rental vehicles. Contact your Toyota Dealer or go to toyota.com.au/advantage for other exclusions, eligibility and full details.
- 15 New Vehicle Warranty expires three years from date of first delivery or 100,000km, whichever occurs first. Refer to the warranty conditions. The New Vehicle warranty does not limit and may not necessarily exceed your rights under the Competition and Consumer Act 2010.
- 16 Toyota Finance is a division of Toyota Finance Australia Limited ABN 48 002 435 181, Australian Credit Licence No 392536.
- 17 Terms and conditions apply. This advice does not take into account any of your particular objectives, financial situation or needs. For this reason, before you act on this advice, you should consider the appropriateness of the advice taking into account your own objectives, financial situation and needs. Before making a decision about any of the insurance products, please refer to the current Product Disclosure Statement (PDS) for the relevant product available from participating Dealers, via the Toyota Insurance website at toyotainsurance.com.au or by calling 137 200. Toyota Insurance is a division of Aioi Nissay Dowa Insurance Co., Ltd. ABN 39 096 302 466 AFSL Number 254489 (Andia). The Insurer is Andia. Our insurance policies do not change or take away your rights under the Australian Consumer Law. Your right to claim under our policies for the benefits covered is in addition to other rights and remedies you have under the law in relation to your vehicle. However, you can choose to make a claim under any of our policies even if you have rights under the law.
- 18 Toyota Extra Care is administered by Toyota Finance, a division of Toyota Finance Australia Limited ABN 48 002 435 181, Australian Credit Licence 392536.

warranty and toyota.com.au/vehiclepayload for details on vehicle payload, to help determine Accessories suitable for your vehicle. Accessory colours shown may vary from actual colour due to the printing process.

Standard equipment may be retained by Toyota Australia. Toyota Australia reserves the right to change, without notice, at any time prices, colours, materials, equipment, specifications and discontinue colours/models. To the extent permitted by law, Toyota Australia will not be liable for any damage, loss or expense incurred as a result of reliance on this material in any way. Distributed nationally (other than in Western Australia) by Toyota Motor Corporation Australia Limited ABN 64 009 686 097, 155 Bertie St, Port Melbourne 3207. Material distributed in Western Australia by or on behalf of Prestige Motors Pty Ltd (for vehicles) and by Eastpoint Pty Ltd (for parts/accessories). Toyota Australia makes no warranties regarding (and will not be liable for) the accuracy of materials distributed in Western Australia. PART NUMBER: TYFJBR00913. VALID: X5059. PRINTED: SEPTEMBER 2013. TMC0379.



FJ Cruiser shown with optional accessories