

LandCruiser 200

King off the Road.



TOYOTA

toyota.com.au



Oh what a feeling!



Front Cover: Sahara model shown

Long live the King.

It was way back in 1957 when our very first LandCruiser helped build the Snowy Mountain Hydro-Electric Scheme. Each day it reliably carried workers to the job and home again, in unforgiving and unrelentingly hard conditions. Since those backbreaking 'survival tool' days, LandCruiser has cemented its position as the tough, uncompromising workhorse that's

more than earned its reputation as the 4WD that built Australia.

Now, fifty-eight years on, LandCruiser 200 is a true Australian icon. Even as it has evolved to incorporate the very latest cutting edge technology and comfort, the rich heritage of the job hardened, proven DNA is still at the heart of every 200 Series.





Toughness with a touch of class.

When you're taking on some of the world's hardest conditions, you need a vehicle with a proven mix of strength and clever thinking to go the distance. Which is why some of the world's finest four-wheel drive engineers crafted the imposing physique of the LandCruiser 200 to be both rugged in purpose and refined in intent.

One look at the broad, uncompromising stance and the meticulous attention to detail tells you LandCruiser 200 is more than ready to dominate.

So whether you're on the road, crawling up muddy rivers or battling in the bush, you'll quickly appreciate the qualities that gave LandCruiser 200 its hard-earned reputation as 'King off the Road.'



Built with purposeful intent.

To help make sure LandCruiser 200 is tough enough to handle the hard stuff, it has been seriously engineered to serve a specific purpose. The rear spoiler on the Sahara, VX and GXL not only enhances the exterior lines, but also helps improve aerodynamics and fuel efficiency.

As well as looking ready for action, the stylish matching colour bumpers with a built-in towbar cover, continue the good work, by also acting with the side panel protection on the Sahara to help protect you from the bumps and scrapes of both the urban jungle and the great outdoors.



Let greatness light the way.

Echoing a great history of off-road excellence, if you look closely you'll notice the bold headlamp styling on the 200 Series has been inspired by LandCruisers past – even down to the LandCruiser logo in the corner. And in line with tradition, they'll clearly light up the road in all conditions to help get you home safely.

The Sahara and VX models feature High Intensity Discharge (HID) headlamps with six LED Daylight Running Lamps (DRLs), plus an integrated

headlamp cleaning device and fog lamps to help ensure the way ahead is kept clear and bright. At the rear, large dual combination LEDs and high mount LED stop lamps help ensure you'll stay safely in the sights of any other vehicle, in all kinds of weather.

And to make your intentions absolutely clear, side turn indicators are also integrated into the power exterior door mirrors.¹





GXL model shown



Smart thinking for hostile places.

Even with its abundance of technological innovations and sophisticated design features, the 200 Series is still 100% LandCruiser tough and engineered from the ground-up to tackle genuine four wheel driving.

When faced with the steepest terrain, Hill-start Assist Control (HAC) will help ensure a smooth take-off and the Multi-Terrain Anti-lock Braking System (ABS) is also fitted as standard on all models.

You'll have Active Traction Control system (A-TRC) to help eliminate wheel spin by automatically distributing the power to the tyres with the best grip – even on slippery and changeable surfaces. The Vehicle Stability Control (VSC) uses electronic sensors to help with any potential oversteer or understeer and the Electronic Brake-force Distribution (EBD) automatically increases the brake force to the wheel(s) that need it most. Plus Brake Assist (BA) will help ensure the shortest and safest possible braking distance in an emergency.

Goes best in the worst conditions.

LandCruiser has always been trusted to take-on the toughest conditions, and the 200 Series incorporates a range of features that extends its already legendary capability.

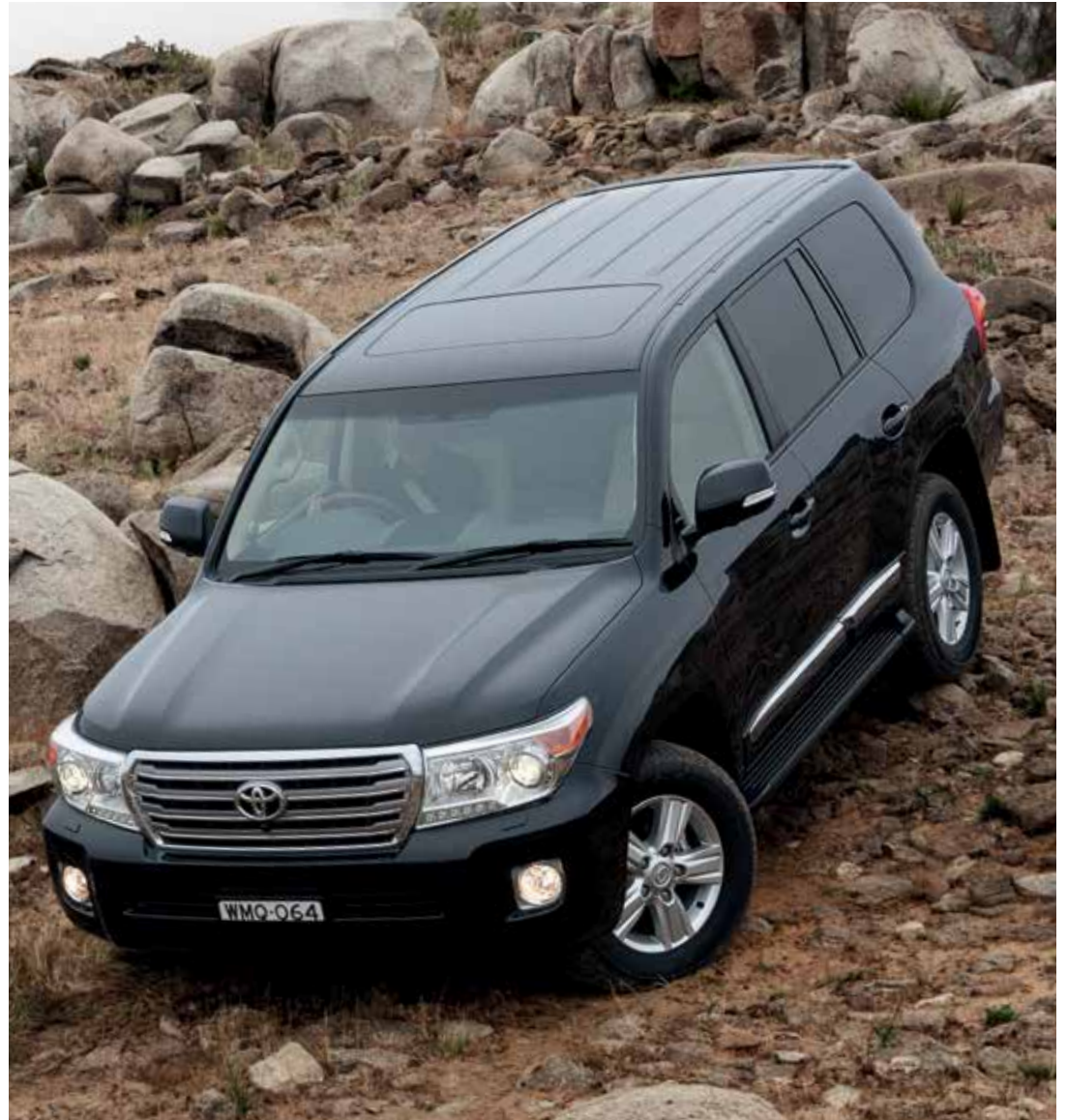
The Torsen Limited Slip Differential has a front-to-rear torque distribution structure of 41:59 to ensure greater stability and control when accelerating.

On slippery, uneven surfaces the CRAWL Control² allows you to maintain a low constant speed on challenging surfaces by automatically and independently controlling both engine power and brake input to each wheel. This feature also includes Turn Assist to help manage you through uneven low-speed corners.

The Kinetic Dynamic Suspension System (KDSS)³ electronically controls the suspension to provide gentler driving dynamics and improved stability in even the roughest conditions.

The VX and Sahara models are also fitted with a five setting Multi-Terrain Select (MTS) system that allows you to choose the specific grip assistance to match the terrain.

Sahara model shown





Sahara model shown

Admire the view within.

The LandCruiser 200 might be tough as nails outside, but inside you'll be treated to a luxurious expanse of creature comforts. So wherever your LandCruiser 200 takes you, you'll always feel reassuringly removed from the rigours of the outside world.

From the outback to the inner city, you'll find it easier to reach your destination, then head back home with Satellite Navigation⁴ fitted on the GXL, VX and Sahara models.

In the Sahara, the Satellite Navigation⁴ operates via an Electro Multi Vision (EMV) system that also controls the 9-speaker audio system, rear-seat DVD system and the pollen filtered air conditioning with 4-zone climate control.

Air conditioning is also fitted to the GX and dual-zone climate control for passengers in the front seats is standard on GXL and VX models with additional cooler controls in the rear seats.

Take control of the situation.

With a Smart Entry and Start system, it's easy to jump-in and get started, even with your keys still in your pocket or bag.¹ When reversing, the integrated Reversing Camera⁵ in the GXL, VX and Sahara models helps make it easier to see what's behind. In tight spaces, Park Assist^{5,6} on the VX and Sahara models uses audible warnings to help you squeeze in and out with ease.

The Sahara is also equipped with a Multi-Terrain Monitor (MTM)⁷ that uses four cameras to give you a close look at the conditions right around the vehicle.



Smart Entry Button
Overseas Sahara model shown



Smart Key
Overseas Sahara model shown



Reversing Camera with Park Assist
Sahara model shown



Cooler box
Overseas Sahara model shown



Instrument gauges
Sahara model shown



USB input terminal
Overseas Sahara model shown



Shift lever
Overseas Sahara model shown



Roof mounted Rear Seat Entertainment system
Sahara model shown



Moonroof
Sahara model shown



CRAWL Control²
Overseas Sahara model shown



Climate control seating
Overseas Sahara model shown

Fine touches for a hard world.

Inside the LandCruiser 200 you'll also find plenty of convenient features to complement the comfort.

Every switch and instrument gauge has been carefully placed to provide the easiest access and best vision. In the VX and Sahara models, the Optitron Combimeter also delivers important information including trip details, cruising range and fuel efficiency.

Entertainment is delivered via a AM/FM audio system through a minimum of four and a maximum of nine speakers with Bluetooth® and USB connectivity.⁹ The GXL and VX models feature a 6.1" LCD touchscreen with a 7.1" LCD Electro Multi Screen in the Sahara plus a roof mounted rear entertainment system with three wireless headphones.

You'll also enjoy a remote control moonroof in the VX and Sahara models, and the Sahara also features climate control front seats and a cooler box in the centre console.



Sahara Turbo-diesel model shown

Placing real power in your hands.

The LandCruiser built its reputation by delivering rock solid performance in every possible condition. And as 'King off the Road', LandCruiser 200 gives you the choice of two awesome engines to supply power that's nothing short of regal.

The 4.6 litre V8 Petrol engine is seriously powerful, producing a massive 227kW, and combined with a maximum torque of 439Nm at 3400rpm, it pulls like a train too. It also meets strict EURO IV emissions regulations to deliver improved fuel efficiency and performance.

The 4.5 litre V8 Twin Turbo-diesel engine with intercooler and direct injection is a serious beast in its own right. Muscling up with 195kW of power and 650Nm of heavy duty torque at 1600 – 2600rpm, it delivers all the grunt you'll ever need across this wide brown land. Whichever engine you choose, the power will be smoothly delivered by a 6-speed Super Electronic Control Automatic Transmission (ECT).

It features the latest technology to improve performance and efficiency while remaining surprisingly quiet.



Tough as nails outside, safe within.

No matter how rough and tumble it gets outside, the LandCruiser 200 safety features are engineered to provide you with maximum protection.

In the event of a collision, the safety frame and Head Impact Absorbing structure works with the upper body reinforcement to absorb and redistribute the impact and under the bonnet you'll find impact absorbing beams and a vertical-frame structure.

All LandCruiser 200 models come equipped with driver and front passenger dual stage SRS airbags, knee and front side airbags for

the driver and passenger, as well as curtain shield airbags for the front and second row passengers. In the GXL, VX and Sahara, full-length curtain shield airbags have been added to protect passengers in the third row.¹ In the VX and Sahara additional second row side airbags have also been added.

The safety features on LandCruiser 200 do more than just help protect people. When you're towing, the Trailer Sway Control (TSC) uses sensors to help suppress sway triggered by various elements including wind, bumpy roads and the steering operation.



GX

The LandCruiser GX is packed with an impressive number of features:

- 4.5L Twin Turbo-diesel
- 17" steel wheels
- 6-speed automatic transmission
- Full time 4WD
- Vehicle Stability Control (VSC)
- Active Traction Control (A-TRC)
- Hill-start Assist control (HAC)
- Multi-Terrain Anti-skid Braking System (ABS)
- CRAWL Control with Off-Road Turn Assist²
- Barn doors: dual vertical hinged tailgate with wiper¹⁰
- Air intake with pre-cleaner and snorkel¹⁰
- Air conditioning
- Cruise control
- Tilt and telescopic steering wheel
- Driver's seat height adjustment and power lumbar adjustment
- Audio controls on steering wheel
- 138L fuel tank capacity (93L main + 45L subtank)
- Engine Immobiliser
- Driver and front passenger SRS, knee and side airbags
- Front and 2nd row curtain shield airbags
- AM/FM radio with MP3 compatible single-disc in-dash CD player
- Bluetooth^{®8} capabilities
- 3.5mm AUX input for portable audio players^{9,10}
- USB input for some iPod^{®12}/USB memory sticks⁹
- Power windows and mirrors



GXL

In addition to GX features:

- 4.5L Twin Turbo-diesel or 4.6L Petrol Engine¹¹
- 17" alloy wheels
- Privacy glass
- Kinetic Dynamic Suspension System (KDSS)³
- Eight seats with cloth seat trim
- Horizontal split tailgate
- Rear spoiler
- Side steps
- Indicators integrated within both exterior mirrors
- Smart Entry and Start system
- Dual-zone front climate control air conditioning with pollen filter and rear cooler
- 3rd row curtain shield airbags
- Single-disc CD player with 6.1" LCD touchscreen, MP3 compatibility and AM/FM tuner
- Six speakers
- Satellite Navigation⁴
- Reversing Camera⁵
- 2 x 12V accessory connectors
- 220V rear accessory connector
- Alarm and engine immobiliser



VX

In addition to GXL features:

- 18" alloy wheels
- HID headlamps with 6 LED Daytime Running Lamps (DRLs) with washers and auto levelling
- Front fog lamps
- Moonroof with remote control
- Auto-retract exterior mirrors
- Leather Accented and woodgrain-look interior
- Eight seats (Petrol only)
- Seven seats (Turbo-diesel only)
- Rain sensing wipers
- Front Clearance and Rear Parking Sensors^{5,6}
- Multi Information Display (MID)
- Multi-Terrain Select
- Second row side airbags
- Power adjustable driver and front passenger seats and driver's seat power lumbar support



Sahara

In addition to VX features:

- Electro Multi Vision (EMV) with 7.1" LCD touch screen, single-disc MP3 compatibility⁹ and AM/FM tuner
- 9 speakers
- Body side mouldings with chrome highlights
- Power back door
- Seat heating for front and second row rear seats
- Climate control front seats
- Four-zone climate control air conditioning
- Cooler box
- Memory system (3 position) for driver's seat, telescopic steering and exterior mirrors
- DVD Rear Seat Entertainment with remote control and three wireless headphones
- 4 camera Multi-Terrain Monitor⁷
- Electrochromatic interior mirror



Sahara accessorised with Alloy Bull Bar, RALLYE FF 4000 Compact driving lights in chrome, Bonnet Protector, Weathershields, Heavy Duty Roof Rack, Alloy Roof Tray. Accessories sold separately.



Sahara accessorised with Alloy Bull Bar, RALLYE FF 4000 Compact driving lights in chrome, Bonnet Protector, Weathershields, Heavy Duty Roof Rack, Alloy Roof Tray. Accessories sold separately.

Everything you need to meet the challenge.

As Australia's proven 'King off the Road', LandCruiser is ready for any challenge. That's why you can choose from a huge range of Genuine Toyota Accessories to help make your mission even easier. And each and every one of them is made legendary LandCruiser tough and backed by our Toyota Warranty.



Steel Bull Bar^{13,14} – RALLYE FF 4000 Compact Driving lights¹⁶



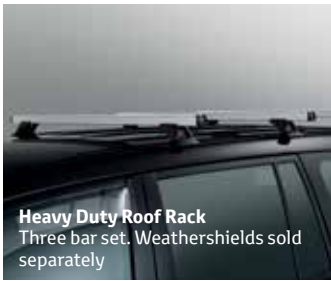
Alloy Bull Bar^{13,14,15}
RALLYE FF 4000 Compact Driving lights¹⁶



Alloy Nudge Bar¹⁴

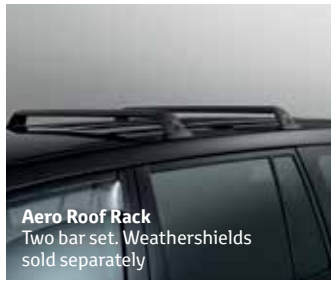


Superwinch – 9000lb capacity
Requires Steel Bull Bar¹⁶



Heavy Duty Roof Rack

Three bar set. Weathershields sold separately



Aero Roof Rack

Two bar set. Weathershields sold separately



Alloy Roof Tray¹

Requires Heavy Duty Roof Rack. Weathershields sold separately¹⁶



Deluxe Ski & Snowboard Carriers

Requires Aero Roof Racks. Weathershields sold separately¹⁶



Pro Ride Bicycle Carrier

Requires Aero Roof Racks. Weathershields sold separately¹⁶

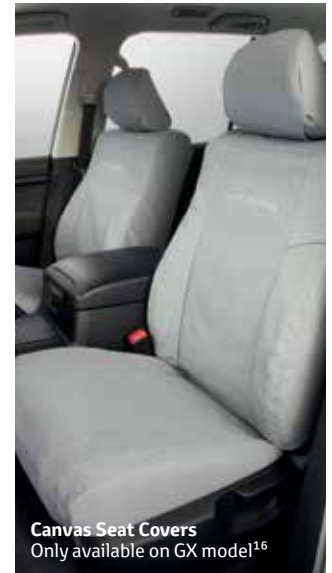


Kayak Carrier

Requires Aero Roof Racks¹⁶



Front Weathershields¹⁶



Canvas Seat Covers

Only available on GX model¹⁶



Headlamp Covers

Available on GX and GXL only. Bonnet Protector sold separately



All Weather Rubber Cargo Mat

GXL model shown. Dimensions of accessory may vary depending on the model



Cargo Barrier

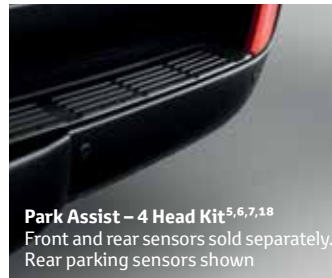
GXL model shown. Dimensions and design of Cargo Barrier may vary depending on the model



18" Alloy Wheels¹



Towbar, Towball and Trailer Wiring Harness 3500Kg^{16,17}
(Braked Capacity)



Park Assist - 4 Head Kit^{5,6,7,18}

Front and rear sensors sold separately. Rear parking sensors shown



Satellite Navigation⁴ Audio System

Only available on GX model



Rubber and Carpet Floor Mats¹

Colours fit for a King.

The LandCruiser 200 is available in nine colours, each a regal finish to such an imposing presence. All you need to do is choose the one that best suits your purpose and personal style.



Ebony (202)



Glacier White (040)



Crystal Pearl¹⁹ (070)



Graphite¹⁹ (1G3)



Silver Pearl¹⁹ (1F7)



Eclipse Black¹⁹ (218)



Vintage Gold¹⁹ (4R3)



Merlot Red¹⁹ (3Q3)

Craftsmanship that cradles you.



Black Leather Accented interior shown



Grey Fabric Interior
(FZ11, FF11)



Black Leather Accented
Interior (LD23)



Beige Fabric
Interior (FF03)



Beige Leather Accented
Interior (LD03)

The LandCruiser 200 is ready for the tough stuff outside, with quality and luxurious within. The sumptuous interiors feature the finest materials and highest quality finishes. You can choose from three interior themes – Black, Grey and Beige with premium fabric options available on the GX and GXL models and a Leather Accented interior available on Sahara and VX grades.

The wide-open spaces are not reserved for outside. You'll enjoy a massive 8-seat capacity in the Turbo-diesel GXL and all petrol models, a generous 7-seat capacity in the Turbo-diesel Sahara and VX, and with a 5-seat capacity in the GX, none of the crew need ever be left behind.

MECHANICAL SPECIFICATIONS		4.6L V8 Petrol	4.5L Twin Turbo-diesel V8
Engine	Name	1UR-FE	1VD-FTV
	Displacement (cm ³)	4608	4461
	Max power (kW/rpm)	227/5500	195/3400
	Max torque (Nm/rpm)	439/3400	650/1600 – 2600
	Valve train	DOHC with Dual VVT-i	DOHC
	Fuel system	Multi-Point EFI	Common Rail Direct Injection
	Bore x Stroke (mm)	94 x 83	86 x 96
	Compression ratio	10.2:1	16.8:1
	Fuel economy ²⁰	13.6L/100km	10.3L/100km
Transmission	Transmission	Automatic 6-speed electronically controlled with Artificial Intelligence Shift Control and Sequential Shift	Automatic 6-speed electronically controlled with Artificial Intelligence Shift Control and Sequential Shift
	Gear ratios	1st 3.333; 2nd 1.960; 3rd 1.353; 4th 1.000; 5th 0.728; 6th 0.588; Reverse 3.061	1st 3.333; 2nd 1.960; 3rd 1.353; 4th 1.000; 5th 0.728; 6th 0.588; Reverse 3.061
	Transfer ratio high	1.000	1.000
	Transfer ratio low	2.618	2.618
	Differential ratio	4.300	3.909
	Centre differential	Torsen Limited Slip Centre Differential	Torsen Limited Slip Centre Differential
	4x4 drive mechanism	Full time	Full time
Steering	Type	Power assisted rack and pinion	Power assisted rack and pinion
	Turning circle	Kerb to kerb (m) 11.8	Kerb to kerb (m) 11.8
Brakes	Front	Ventilated discs	Ventilated discs
	Rear	Ventilated discs	Ventilated discs
Suspension	Front	Independent double wishbone with a coil spring, gas dampers and anti-roll bar	Independent double wishbone with a coil spring, gas dampers and anti-roll bar
	Rear	4-link coil rear suspension with Panhard rod with coil springs, gas dampers and anti-roll bar	4-link coil rear suspension with Panhard rod with coil springs, gas dampers and anti-roll bar

LANDCRUISER MODEL		GX Turbo-diesel	GXL Petrol	GXL Turbo-diesel	VX Petrol	VX Turbo-diesel	Sahara Petrol	Sahara Turbo-diesel
Exterior	Rear spoiler		•	•	•	•	•	•
	HID headlamps with 6 LED Daytime Running Lamps (DRLs) with washers and auto levelling				•	•	•	•
	Front fog lamps				•	•	•	•
	Auto-retract exterior mirrors				•	•	•	•
	Privacy glass		•	•	•	•	•	•
	Side steps		•	•	•	•	•	•
	Rear barn doors	•						
	Power back door						•	•
	Spare tyre mounted underside of cargo floor	•	•	•	•	•	•	•
Wheels	Tyre size	285/65R17	285/65R17	285/65R17	285/60R18	285/60R18	285/60R18	285/60R18
	Rim type	17" steel	17" alloy	17" alloy	18" alloy	18" alloy	18" alloy	18" alloy
Interior Trim and Seating	Premium interior with woodgrain-look highlights				•	•	•	•
	Vinyl floor covering	•						
	Premium steering wheel and gear lever				•	•	•	•
	Passenger assist grips and grab handles	•	•	•	•	•	•	•
Seating	Driver's manual seat height adjustment and power lumbar support	•	•	•				
	Power adjustable driver and front passenger seats and driver seat power lumbar support				•	•	•	•

LANDCRUISER MODEL		GX Turbo-diesel	GXL Petrol	GXL Turbo-diesel	VX Petrol	VX Turbo-diesel	Sahara Petrol	Sahara Turbo-diesel
Seating <i>(continued)</i>	Driver and front passenger and 2nd row seat heaters (front seats with climate control)						.	.
	2nd row seat: 60/40 split folding seat backs	.	.	.				
	2nd row seat: 40/20/40 split folding seat backs			
	3rd row seat: side folding & 50/50 split seat backs	
Storage	Cupholders and bottle holders
	Driver and front passenger seat back map pockets
	Cooler box						.	.
Features	Air intake with pre-cleaner and snorkel	.						
	Smart Entry and Start system	
	Reversing camera ⁵	
	Air conditioning	.						
	Dual-zone front climate control air conditioning and rear cooler with cooler controls			
	Four-zone front climate control air conditioning						.	.
	Power windows with auto up/down (GX model: driver's window only)
	Accessory power sockets: front (12V) and rear (220V)	
	Rain sensing wipers			
	Front clearance and rear parking sensors ^{5,6}			

LANDCRUISER MODEL		GX Turbo-diesel	GXL Petrol	GXL Turbo-diesel	VX Petrol	VX Turbo-diesel	Sahara Petrol	Sahara Turbo-diesel
Features <i>(continued)</i>	Driver's memory (3 position) seat, steering and exterior mirrors						•	•
	Moonroof				•	•	•	•
	DVD Rear seat entertainment with remote control and 3 wireless headphones						•	•
Instruments & Controls	Cruise control	•	•	•	•	•	•	•
	Tilt and telescopic steering wheel	•	•	•	•	•	•	•
	Urethane steering wheel with audio controls	•	•	•				
	Premium steering wheel with audio and MID controls				•	•		
	Premium and woodgrain-look steering wheel with audio, MID and telephone controls						•	•
	Multi-Terrain Monitor ⁷ (4 cameras)						•	•
	Multi Information Display (MID/trip computer)				•	•	•	•
	Electro chromatic interior mirror						•	•
Sound System	Single disc CD player, MP3 compatibility and AM/FM tuner ⁹	•						
	Single disc CD player with 6.1" LCD touchscreen, MP3 compatibility and AM/FM tuner		•	•	•	•		
	Electro Multi Vision (EMV) with 7.1" LCD touchscreen, single disc MP3 compatibility and AM/FM tuner ⁹						•	•
	3.5mm AUX input for portable audio players ⁹	•						
	USB input for some iPod ^{®12} /USB memory sticks ⁹	•	•	•	•	•	•	•
	Bluetooth [®] capabilities ⁸	•	•	•	•	•	•	•

LANDCRUISER MODEL		GX Turbo-diesel	GXL Petrol	GXL Turbo-diesel	VX Petrol	VX Turbo-diesel	Sahara Petrol	Sahara Turbo-diesel
Sound System <i>(continued)</i>	Number of speakers	4	6	6	6	6	9	9
	Satellite Navigation ⁴		•	•	•	•	•	•
4WD Technologies	Multi-Terrain Select				•	•	•	•
	CRAWL Control (incorporating Off-road Turn Assist) ²	•	•	•	•	•	•	•
	Kinetic Dynamic Suspension System (KDSS) ³		•	OPT	•	•	•	•
Safety	Vehicle Stability Control (VSC)	•	•	•	•	•	•	•
	Active Traction Control (A-TRC)	•	•	•	•	•	•	•
	Hill-start Assist Control (HAC)	•	•	•	•	•	•	•
	Multi-Terrain Anti-skid Braking System (ABS)	•	•	•	•	•	•	•
	Driver and front passenger SRS and knee airbags, driver and front passenger side and front and 2nd row curtain shield airbags	•	•	•	•	•	•	•
	2nd row side airbags				•	•	•	•
	3rd row curtain shield airbags		•	•	•	•	•	•
	Auto-retractable 3-point seatbelts	•	•	•	•	•	•	•
	Child restraint anchorage points (3)	•	•	•	•	•	•	•
	Luggage tie down hooks	•	•	•	•	•	•	•
Security	Engine immobiliser and alarm		•	•	•	•	•	•

The Toyota Advantage.

Every Toyota gives you a lifetime of advantages. That's what makes it a Toyota. You'll enjoy legendary Toyota value from the moment you drive away, and you'll continue to appreciate the quality, safety and innovation that's engineered into each model, every day you drive.



A smarter way to buy.

Toyota Access puts you in complete control when buying a new car.²⁴ Drive out of the Dealership with a clear road ahead then drive back a few years later with more options at your disposal than ever before. Whatever stage you're at in life, Toyota Access puts you in the driver's seat with ongoing flexibility and assurance. To discover Toyota Access for yourself visit toyota.com.au/access



Finance to get you going.

If you need a little help, Toyota Finance²⁷ can offer you a wide range of vehicle financing. With Toyota Finance, you'll have the peace of mind of dealing with one of Australia's leading vehicle finance corporations with over 30 years experience. And with a range of flexible products and services to suit almost every need and circumstance, Toyota Finance can help find the right package for you or your business.



Capped price servicing.²⁵

A new Toyota means you don't have to worry about unexpected service costs. Every Toyota comes with a low, capped price service cost for a set number of years/kilometres. Pay the same low capped price from one eligible logbook service to the next for up to three years or 60,000km, whichever occurs first (including Genuine parts, labour and fluids). For the full benefits consult a Toyota Dealer or visit toyota.com.au/advantage



Even more protection.

Our Comprehensive Motor Vehicle insurance²⁸ policy is packed with great benefits including; agreed value cover or New vehicle replacement cover for Toyota vehicles damaged beyond repair within 3 years of original registration, Genuine Parts Promise and Lifetime Repair Guarantee. And our Toyota Insurance Factory Approved Extended Warranty Insurance provides protection that continues after your Toyota New Vehicle Warranty ends.



We've got your back.

Every new Toyota is built to exceptional standards, backed by a three year/100,000km²⁶ warranty, giving you the peace of mind to feel confident for years to come. In the unlikely event that you need them, every Toyota Service Centre is committed to providing any warranty repairs you may need. They have the technology, the tools, and the skilled personnel to keep your Toyota in excellent condition.



Extend your peace of mind.

Whether it's a flat tyre, lost keys or a flat battery, Toyota Extra Care Roadside Assist²⁹ is never more than a phone call away. Available 24 hours a day, seven days a week, every day of the year, you'll have peace of mind, whatever your emergency. With two levels of cover available, Toyota Extra Care Roadside Assist provides one of the most professional, reliable, and technologically advanced assistance networks in Australia.

Disclaimers and Notice.

- 1 Not available on GX models.
- 2 CRAWL Control (with Turn Assist) is a driver assist technology and should not be used as a substitute for safe driving practices. Areas into which the vehicle is driven must be visually monitored.
- 3 KDS is not available on GX, is an optional extra on GXL Turbo-diesel and is standard on all other grades.
- 4 Current navigation mapping database encompasses major capital and primary national road networks and offers some coverage in regional areas.
- 5 Park Assist/Reversing Camera is designed as a driver assist device only and should not be used as a substitute for skilled driving (and/or safe parking practices). The area into which the vehicle is to be driven must be visually monitored by the driver.
- 6 Park Assist front sensors not available in conjunction with Alloy Nudge Bar.
- 7 Multi-Terrain Monitor does not provide a comprehensive view of the area surrounding the vehicle, it is a driver assist device only and should not be used as a substitute for safe driving practices. Areas into which the vehicle is driven must be visually monitored.
- 8 The Bluetooth® word mark is owned by Bluetooth SIG, Inc. Not all devices will be compatible and functionality varies depending on the device.
- 9 Not all devices will be compatible. Functionality varies depending on device.
- 10 GX models only.
- 11 Petrol engines not available on GX models.
- 12 iPod® is a trademark of Apple, Inc. Not all devices will be compatible and functionality will vary depending on the device.
- 13 Sahara model shown. Parking sensors available as standard on Sahara and VX grades, and are available as accessory options on the GX and GXL models (Sold separately).
- 14 For vehicles fitted with front cameras, fitment of Nudge Bar or Bull Bar will reduce the field of vision.
- 15 Not compatible with accessory Park Assist.
- 16 Sold separately.
- 17 Towing capacity is subject to regulatory requirements, towbar and vehicle design and towing equipment limitations. Ask your Dealer for Toyota Genuine Towbar capacity and availability details.
- 18 Bull Bar compatible Park Assist available across all grades. Front Park Assist only available to GX and GXL grades.
- 19 Paint featured is an optional extra at additional cost.
- 20 Fuel consumption varies depending on driving conditions/style, vehicle conditions and options/accessories. Source of fuel consumption data: ADR81/02 combined.
- 21 Some vehicle dimension figures are approximate and may vary due to options and accessory fitment.
- 22 Kerb, tare and payload weights are nominal and vary depending on options and accessories.
- 23 Gross Vehicle Mass (GVM) is the total permissible combined weight of the vehicle, including occupants, fuel & cargo.
- 24 Terms and Conditions, fees and charges apply. Toyota Access Guaranteed Future Value products are available to approved customers of Toyota Finance, a division of Toyota Finance Australia Limited ABN 48 002 435 181, AFSL and Australian Credit Licence 392536.
- 25 Maximum payable for standard scheduled logbook servicing (normal operating conditions) until first of three years or 60,000km (whichever occurs first), up to the first six services. Excludes Government & Rental vehicles. Contact your Toyota Dealer or go to toyota.com.au/advantage for other exclusions, eligibility and full details.
- 26 New Vehicle Warranty expires three years from date of first delivery or 100,000km, whichever occurs first. Refer to the warranty conditions. The New Vehicle warranty does not limit and may not necessarily exceed your rights under the *Competition and Consumer Act 2010*.
- 27 Toyota Finance is a division of Toyota Finance Australia Limited ABN 48 002 435 181, Australian Credit Licence No 392536.
- 28 Terms and conditions apply. This advice does not take into account any of your particular objectives, financial situation or needs. For this reason, before you act on this advice, you should consider the appropriateness of the advice taking into account your own objectives, financial situation and needs. Before making a decision about any of the insurance products, please refer to the current Product Disclosure Statement (PDS) for the relevant product available from participating Dealers, via the Toyota Insurance website at toyotainsurance.com.au or by calling 137 200. Toyota Insurance is a division of Aioi Nissay Dowa Insurance Co., Ltd. ABN 39 096 302 466 AFSL Number 254489 (Andia). The Insurer is Andia. Our insurance policies do not change or take away your rights under the Australian Consumer Law. Your right to claim under our policies for the benefits covered is in addition to other rights and remedies you have under the law in relation to your vehicle. However, you can choose to make a claim under any of our policies even if you have rights under the law.
- 29 Toyota Extra Care is administered by Toyota Finance, a division of Toyota Finance Australia Limited ABN 48 002 435 181, Australian Credit Licence 392536.

IMPORTANT NOTICE PLEASE READ:

Toyota Genuine Accessories are not applicable to all models/grades. Consider the mass of your load to ensure you will not exceed the maximum allowable individual axle capacity, Gross Vehicle Mass and/or Gross Combined Mass of the vehicle. Refer to the Accessories brochure or visit toyota.com.au for details on warranty and toyota.com.au/vehiclepayload for details on vehicle payload, to help determine which Accessories are suitable for your vehicle. Accessory colours shown may vary from actual colour due to the printing process. Toyota Australia uses its best endeavours to ensure this material is accurate at time of printing. However, information must be confirmed with your

Toyota Dealer when ordering, as specifications and details will change over time. Colours displayed here are a guide only and may vary from actual colours. To the extent permitted by law, Toyota Australia will not be liable for any damage, loss or expense incurred as a result of reliance on the information and photos contained in this material. Material distributed in Western Australia by or on behalf of Prestige Motors Pty Ltd (for vehicles) and by Eastpoint Pty Ltd (for parts/accessories). Toyota Australia makes no warranties regarding (and will not be liable for) the accuracy of materials distributed in Western Australia. PART NUMBER: TYLC200PACKBRO. PROOF HQ T2015-000599. PRINTED: SEPTEMBER 2015. GTO1589.

A weathered, rusted metal sign stands in a desert landscape. The sign is rectangular and mounted on four wooden posts. The text on the sign is painted in a bold, sans-serif font. The background shows a clear blue sky, a flat horizon, and a ground surface that is a mix of light brown and tan, suggesting a dry, arid environment.

KING
OFF THE
ROAD