



## The Amarok



# Amarok

THE AMAROK Specifications / February 2011	Amarok	Amarok Trendline	Amarok Highline	Amarok Ultimate
<b>FEATURES AND OPTIONS</b>				
S = Standard O = Optional Extra – Not Available Acc = Accessory				
<b>Safety and Security</b>				
Drivers and front passenger airbag	S	S	S	S
Front side and thorax airbag	S	S	S	S
Electronic Stability Program (ESP) with Brake Assist	S	S	S	S
Off Road ABS/ASR and EDL	S	S	S	S
Electronic engine immobilizer	S	S	S	S
Remote central locking	S	S	S	S
Front height adjustable 3 point seatbelts with pre-tensioners	S	S	S	S
Alarm with back-up horn	–	–	S	S
Seat belt warning (Drivers seat only)	S	S	S	S
<b>Exterior</b>				
Metallic paint	O	O	O	O
Pearl effect paint	O	O	O	O
Stainless steel sports bar	Acc	Acc	Acc	S
Stainless steel side steps	Acc	Acc	Acc	S
Ultimate interior and exterior badges	–	–	–	S
Front fog lights	–	S	S	S
High level brake light and cargo area lighting	S	S	S	S
Electrically adjustable door mirrors with heating function	S	S	S	S
Front and rear mud flaps	S	S	S	S
Heat insulating (Green) glass	S	S	S	S
Privacy glass (rear)	–	–	S	S
Engine and transmission protection – 4WD Models	S	S	S	S
Engine and transmission protection – 2WD Models	O	–	–	–
180° opening tailgate	S	–	–	–
Rear bumper with integrated step	–	S	S	S
Body coloured bumpers and mirror housings	–	S	–	–
Body coloured bumpers with chrome details and mirror covers	–	–	S	S
Tiedown points in cargo area (4)	S	S	S	S
16" x 6.5J Steel Wheels with 205 R16C 110/108T	S	–	–	–
16" x 6.5J Alloy wheels 'Taruma' with 245/70 R16 111T tyres	O	S	–	–
17" x 8.0J Alloy wheels 'Aldo' with 245/65 R17 111T tyres	O	O	–	–
18" x 7.5J Alloy wheels 'Durban' with 255/60 R18 112T tyres	–	–	S	–
19" x 8.0J Alloy wheels 'Alastaro' with 255/55 R19 111T tyres	–	–	–	S
Extended wheel arches (with 17", 18" or 19" Alloy Wheels)	O	O	S	S
Ladder Frame Chassis in high strength steel	S	S	S	S
<b>Interior</b>				
RCD310 Radio CD Player with MP3 Double Din with 2 Speakers	S	–	–	–
RCD310 Radio CD Player with MP3 Double Din with 4 Speakers	–	S	–	–
RCD510 Radio CD Player with MP3 Double Din with 6 Speakers	–	–	S	S
Climatic air-conditioning	S	S	–	–
Climatronic air-conditioning dual-zone	–	–	S	S
Interior trim – "Spacer"	S	–	–	–
Interior trim – "Trail"	–	S	–	–
Interior trim – "Endless" Anthracite cloth	–	–	S	–
Interior trim – "Endless" Mendoza cloth	–	–	O	–
Interior trim – "Endless" Anthracite Leather	–	–	–	S
Interior trim – Vienna Mendoza Leather	–	–	–	O
Interior light (door operated)	S	S	S	S
Interior light in rear	–	S	S	S

THE AMAROK Specifications / February 2011	Amarok	Amarok Trendline	Amarok Highline	Amarok Ultimate
<b>FEATURES AND OPTIONS</b>				
S = Standard O = Optional Extra – Not Available				
<b>Interior (Continued)</b>				
Map lights	–	S	S	S
Rubber floor covering in cab	S	–	–	–
Carpet floor covering in cab	–	S	S	S
Drawers under front seats	–	S	S	S
3 Child restraint location points	S	S	S	S
Centre console with cover	S	S	S	S
Leather gearshift knob and handbrake lever	–	–	S	S
Folding rear bench seat – backrest forwards and seat base upward with fastening strap	S	S	S	S
Headrests for rear bench seats (3)	S	S	S	S
Locking glove compartment	S	S	S	S
3 Spoke steering wheel	S	S	S	S
Leather steering wheel	–	–	S	S
Multifunction display	O	S	S	S
1 x 12V socket – centre armrest	S	–	–	–
3 x 12V sockets – dashboard, centre console and in cargo area	–	S	S	S
Driver and front passenger seat with height adjustment	S	S	S	S
Cloth seats	S	S	S	–
Leather trim	–	–	–	S
Interior grab handles Roof line/A-pillar/B-pillar	4/1	4/2/2	4/2/2	4/2/2
<b>Convenience</b>				
Electric windows with roll-back function	S	S	S	S
Driver and passenger with one-touch up/down	S	S	S	S
Cruise control with multifunction display	O	S	S	S
<b>Instrumentation</b>				
Speedometer and tachometer, electronic odometer and trip meter, digital clock, fuel & coolant indicators, low fuel warning light and fuel gauge.	S	S	S	S
Plus multifunction display showing digital speed reading, range to empty, instant litres/100km and average litres/100km plus outside temperature.	O	S	S	S
<b>Mechanical</b>				
Electric differential lock – rear axle (4WD models )	O	S	S	S
Electric differential lock – rear axle (2WD models )	O	–	–	–
2WD Transmission	S	–	–	–
4MOTION Selectable Transmission	O	S	S	S
4MOTION Permanent Transmission	–	–	–	O
<p>Disclaimer:</p> <p>The information and the specifications contained within this document were correct at the time of issue. Due to our continuous process of improvement our products are continually updated and changes may be made to the specifications from time to time. Not all vehicles or options may be available. Check at time of ordering.</p>				

## THE AMAROK Specifications / February 2011

### TECHNICAL SPECIFICATIONS

<b>Engine</b>	<b>TDI400</b>			
Type	Inline 4 Cylinder, DOHC, 16 Valve			
Capacity, litres/cc	2.0 / 1,968			
Bore x Stroke / Compression ratio	81.0mm x 95.5mm / 16.5:1			
Maximum power, kW @ rpm Maximum torque, Nm @ rpm	120 @ 4,000 400 @ 1,500-2,500			
Fuel system	Common Rail Direct Injection			
Induction type	Twin-turbochargers			
Intercooled	Yes			
Emissions standard	Euro 5 with Diesel Particulate Filter (DPF)			
Fuel type	Diesel			
Fuel tank capacity	80 Litres			
Battery	450 Amp 95Ah			
<b>Transmission</b>				
Transmission	6 Speed Manual			
Driven wheels	Rear wheel drive / Selectable 4MOTION / Permanent 4MOTION			
<b>Wheels and Tyres</b>	<b>Amarok</b>	<b>Amarok Trendline</b>	<b>Amarok Highline</b>	<b>Amarok Ultimate</b>
Wheels	Steel 6.5J x16	Alloy "Taruma" 6.5J x 16	Alloy "Durban" 7.5J x 18	Alloy "Alastaro" 8.0J x 19
Tyres	205 R16 C 110/108T	245 / 70 R16 111T	255 / 60 R18 112T	255 / 55 R19 111T
<b>Fuel Consumption – ADR81/02</b>	Comb / Urban / Ex Urban • CO <sub>2</sub>			
2WD, Litre/100km • CO <sub>2</sub>	7.7 / 9.5 / 6.8 • 203g/km			
4MOTION Selectable, Litre/100km • CO <sub>2</sub>	7.9 / 9.7 / 7.0 • 209g/km			
4MOTION Permanent Litre/100km • CO <sub>2</sub>	7.9 / 9.7 / 7.0 • 209g/km			
<b>Suspension and Steering</b>				
Front axle	Transverse link with A-frame arm double wishbone and anti-roll bar			
Rear axle	Multi-layer rigid axle with leaf spring and stabiliser bar			
Steering	Rack and pinion power steering			
Turning Circle	12.95 m			

## THE AMAROK Specifications / February 2011

### TECHNICAL SPECIFICATIONS

<b>Brakes</b>	<b>TDI400</b>			
Front brakes	303mm Disc brakes			
Rear brakes	295mm Drum brake			
Brake systems	ESP, OFFROAD ABS, ASR <sup>^</sup> , EDL and Hill Holder			
<b>Weights</b>				
GVM, kg	3,040 (optional 2,820)			
Towing capacity, braked / unbraked	2,800kg / 750kg			
Towing downhill load	280kg			
	<b>Amarok</b>	<b>Amarok Trendline</b>	<b>Amarok Highline</b>	<b>Amarok Ultimate</b>
GVM 3,040	Standard (Heavy Duty)			
GVM 2,820	Optional (Comfort Suspension)*			
Tare weight	2,000	2,042	2,069	2,110
Roof load	100 kg			
<b>Dimensions</b>				
Length, mm	5,181 (Amarok) 5,254 (Trendline, Highline and Ultimate)			
Width, mm	1,944 (2,228 including mirrors)			
Height std	1,834			
Wheelbase, mm	3,095			
Ground clearance mm	230 (192 with 4MOTION underbody protection)			
	<b>Amarok</b>		<b>Amarok Trendline &amp; Highline</b>	
Entry angle	28°		28°	
Departure angle	28°		23.6°	
Ramp angle	23°(21.4° with 4MOTION)		23°(21.4 with 4MOTION)	
Wading depth	500mm			

<sup>^</sup> Not included with Permanent 4MOTION

\* Permanent 4MOTION only available with 2,820 GVM

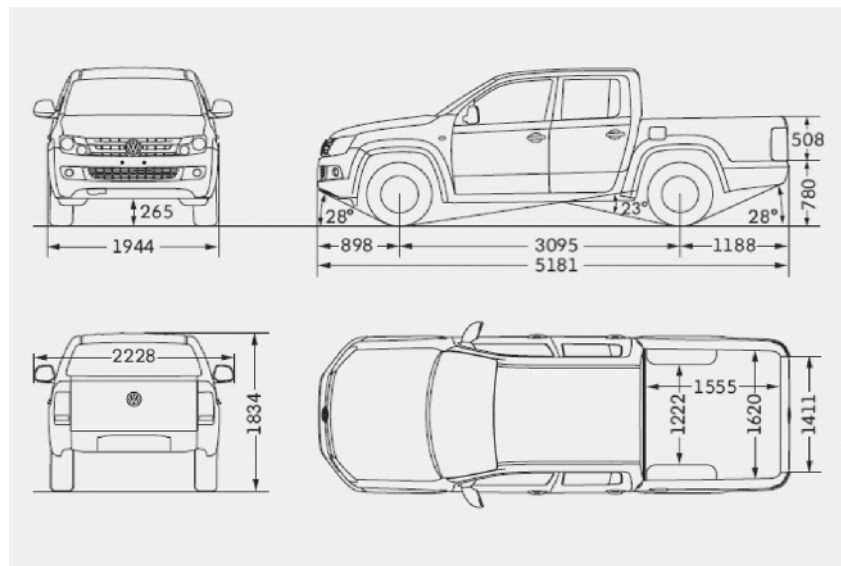
## THE AMAROK Specifications / February 2011

### TECHNICAL SPECIFICATIONS

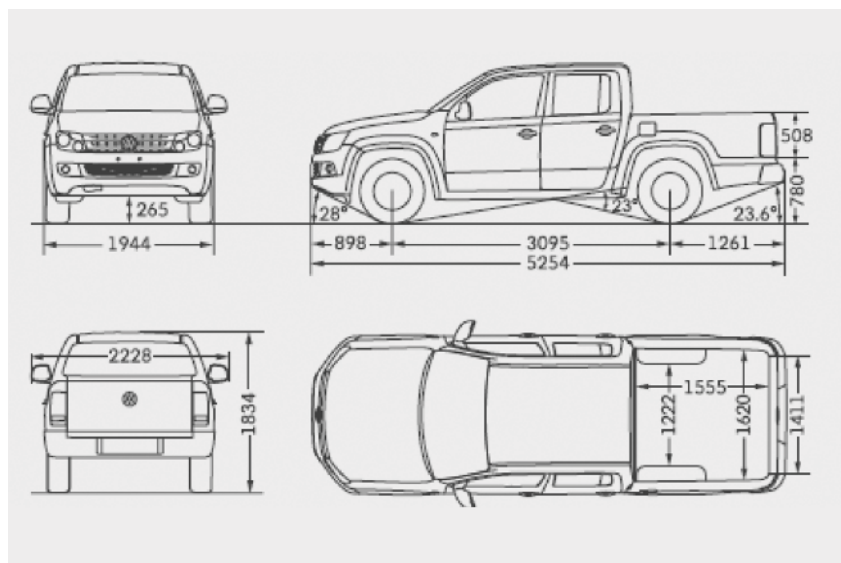
<b>Cargo Area</b>	<b>TDI400</b>
Rear tailgate width, mm	1,411
Rear tailgate height, mm	508
Load volume, m <sup>2</sup>	2.52
Length mm	1,555
Width at widest point mm	1,620
Width at wheel arch mm	1,222
Height from ground mm	780
<b>Warranty</b>	
Vehicle	3 Years, Unlimited km
Paint / Corrosion	3 Years / 6 Years
Road side assistance	3 Years, Unlimited km

THE AMAROK Specifications / February 2011

TECHNICAL SPECIFICATIONS



Amarok Dual Cab



Amarok Dual Cab Trendline, Highline and Ultimate  
(Sports bar and side steps not shown for Ultimate)

THE AMAROK Specifications / February 2011

TECHNICAL SPECIFICATIONS



Amarok



Amarok Trendline



Amarok Highline



Amarok Ultimate



16" Taruma

17" Aldo

18" Durban

19" Alastaro



THE AMAROK Specifications / February 2011

TECHNICAL SPECIFICATIONS



Candy White

Ontario Green

Sand Beige

Reflex Silver



Natural Grey

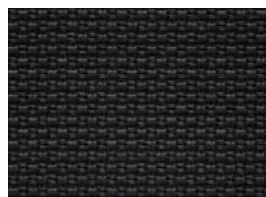
Starlight Blue

Mendoza Brown

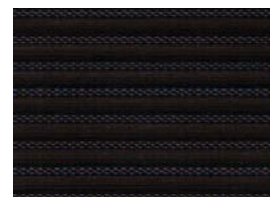
Deep Black



Spacer Cloth



Trail Cloth



Endless Cloth Anthracite



Endless Cloth Mendoza



Vienna Anthracite Leather



Vienna Mendoza Leather