



Das Auto.

The Caravelle and Multivan





Location: Surf Coast Shire Office, Torquay, Victoria. Multivan Highline shown with "Neva" alloy wheel. Refer to page 16 for new standard wheel design – "Timaru".

02 The Caravelle and Multivan

16 Features

17 Safety

18 4MOTION

19 Accessories

20 Engines

21 Technical specifications

21 Drivetrain

22 Measurements and statistics

23 Standard and optional equipment

26 Caravelle paint colours and trim

28 Multivan paint colours and trim

30 Owning a Volkswagen

30 Environment

31 General information







Long live the icon.

Splitty. Microbus. Kombi. Rye Bread. Hippie Van. Kleinbus. Westy. Bully. Barn Door. Breadloaf. Volksybus. Bay Window.

Over the last sixty years or so, the Volkswagen People Mover has had all sorts of nicknames from all sorts of cultures across the planet. Call it whatever you want, but there's little doubt that it has been loved the world over.

Movie star, generational symbol, peace icon and surf paragon. The Volkswagen People Mover has enriched the history of motoring by tapping into the psyche of millions of people. It conjures a spectrum of intense emotions and memories. It speaks of adventure, freedom, romance and shared family experiences. And the strength of the connection is as potent today as it has been at any time in Volkswagen's history.

The latest range of Volkswagen People Movers unites form and function as it always has. But these days, we need more. We need engines that perform brilliantly, are kinder to the environment and achieve superior fuel efficiencies. We need safety. We need comfort and clever storage space. And we need extras and options that adapt to our changing lifestyles.

Today's Volkswagen People Movers are modern icons that still carry Australian families on their quest for adventure and shared experiences. But they also cross over into the corporate world thanks to brilliant functionality, high end design, unmatched comfort and a badge on the front that is a universally recognised symbol of quality and reliability.



Caravelle.

International model pictured with optional alloy wheels and colour coded bumpers.



When it comes to moving people and doing it in style, not much compares to Volkswagen Caravelle. With no less than 9 seats accessible through two huge sliding doors and generous luggage space in the rear, Caravelle can do it all.

Caravelle could be Mum's Taxi doing shopping trips and school drop offs. Or Caravelle could equally become a luxurious shuttle for an upmarket hotel transferring clients to city locations or the airport.

Either way, Caravelle has the style, reliability and versatility to cope with any task.



International model pictured with optional alloy wheels, colour coded bumpers and park distance control.



Just because there are 9 people on board doesn't mean that space has been compromised. Far from it. Passenger comfort in the rear is paramount with quality seats, generous legroom and rear air conditioning control panels. The versatile seat configuration in the passenger cabin allows for a variety of combinations with the seven seat structure. And you can take one or all of the rows out to create a huge flat space giving you even more room for larger luggage items. As you would expect, safety is critical. Caravelle includes a suite of active and passive safety features to protect its occupants including Electronic Stabilisation Programme (ESP), Anti-lock Braking System (ABS) and Electronic Differential Lock (EDL) as standard.

Up front, the Caravelle's advanced TDI340 engine provides 2,000kg towing capacity with torque of up to 340Nm, and outstanding fuel efficiency of just 8.2L/100km. This responsive engine is paired to a smooth 7-speed DSG transmission. Coupled with a truly ergonomic driving environment, it all adds up to make getting around urban environments or the open road a pleasure. And now with 3 year unlimited kilometre warranty and Capped Price Servicing, you'll always have peace of mind when behind the wheel.

Perfect for larger families looking for versatility and safety. Perfect for shuttle bus operators and hotels looking for quality and performance. Caravelle fits the bill in so many ways.



Multivan Highline shown with “Neva” alloy wheel. Refer to page 16 for new standard wheel design – “Timaru”.



Interior – Multivan Comfortline model shown.





Multivan.

Volkswagen Multivan is a triumph of design. With a svelte front end and a sporty, agile profile, the Multivan is more than a pretty face. It's also a pretty space inside with a luxurious passenger interior that takes full advantage of smart German thinking. The Multivan cabin offers a wealth of versatile space for seven people with the climate controlled by a 3-zone climatronic air conditioning unit. In the rear, the second row seats would be right at home in your lounge room. Spin them through 180 degrees and you effectively create a meeting room like no other. We

have catered for comfort in our front seats with adjustable armrests and lumbar support and the option of a practical, beautifully designed multifunctional table (standard in Highline). The table not only pivots to suit the needs of passengers, it also contains several cup-holders and includes handy storage compartments.

Up front, the driver enjoys brilliant handling from highly responsive, efficient engines and transmissions. It's the ultimate control centre – ergonomically

designed with a wide range of state-of-the-art instrumentation. Added peace of mind with 3 year unlimited kilometre warranty, Capped Price Servicing as standard, and safety features spanning the vehicle. This includes driver and front passenger side and curtain airbags, curtain airbags for the rear, Anti-lock Brakes (ABS), Anti-Slip Regulation (ASR), Electronic Stabilisation Programme (ESP) and much more.

Multivan. It's the people mover that has moved up in the world.



Retractable sun blinds.



Park distance control – front and rear. (Optional boot sill protector shown).



Multivan Comfortline.

Multivan Comfortline lives up to its name. The versatile cabin provides for a myriad of combinations depending on how many people are on board and what you're carrying. The secret to this versatility is the ingenious in-floor rail system that allows you to configure the rear of the Multivan Comfortline to suit your needs. The rails allow for endless seat adjustability – it's a very straightforward system to use and so handy when you need to make adjustments on the fly. Picking up some friends from the airport?

Simple – and there's plenty of space for luggage and duty free too. Need to get a few extra mates home from a party? No problem. Heading off on holiday and packing extra gear for the beach? Move a couple of seats around and there's plenty of space to stow tents, eskies and surfcraft. On board comfort is well catered for from the three-zone climate control air conditioning, leather multifunction steering wheel, window blinds, iPod®* attachment, Bluetooth™ phone/media compatibility, eight speaker audio system right down to

the variety of trays and cup holders to keep everything stowed away and handy.

And Multivan Comfortline is perfect for getting families around town. There is a flexible seating arrangement keeping everyone happy thanks to the centre walk through between the driver and passenger seats (sure beats standing in the rain) giving you quick access to the second row and third row in the back.

* iPod® and iPhone® are registered trademarks of Apple Inc. The Bluetooth™ word mark is owned by The Bluetooth SIG, Inc. Not all devices will be compatible and functionality will vary depending on the device.



Multivan Highline shown with "Neva" alloy wheel. Refer to page 16 for new standard wheel design – "Timaru".





Multivan Highline.

Welcome to first class in the Volkswagen People Mover range. Multivan Highline combines luxurious appointments with practicality and versatility that is the hallmark of the whole range.

Inside, you will ease into the comfortable leather appointed chairs which swivel 180 degrees in the second row to create a mobile lounge room. Slip the multifunction table along the interior rail system and you've got the perfect social and business environment. Entry to this interior is even easier with Multivan Highline thanks to smart button-operated (electric) sliding rear doors. Overhead in the rear cabin, a stylish bank of lights and air vents provide fresh air and services to passengers on demand.

The Multivan Highline is a true performance machine which draws on a wonderfully efficient TDI engine offering 132kW of power. The smooth 7-speed DSG transmission makes driving Multivan Highline an absolute pleasure. And if you need some extra grip for difficult on-road conditions or towing, there's always the option of Volkswagen's ingenious 4MOTION DSG system.

Luxury, practicality, standout design and brilliant performance. Multivan Highline has it all.



Electric sliding door buttons.

Features

Volkswagen people movers are equipped for practicality, comfort and worry-free driving. Standard features include sliding side windows, central locking with radio-remote control and electrical door mirrors with heating function. Say goodbye to hill starts with Hill Hold on all variants. Cruise Control is standard on Multivan Comfortline and Highline. A variety of optional assistance systems add a finishing touch to the comfort and convenience of your people mover.



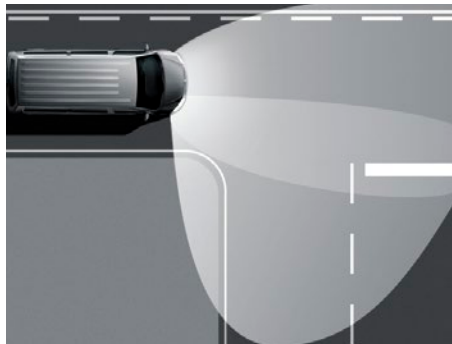
Sliding side windows. Just reach for the handle to let fresh air in, quickly and easily – with the new sliding windows on both the left and right sides.

C MC MH



Climatronic Air conditioning. This system offers 3-zone temperature control for the driver, front passenger and passengers in the passenger compartment. The automatic air-recirculating function and air-quality sensor create a pleasant interior climate.

C MC MH



The front foglights with integrated turning lights, lights up curves and bends on the road when you make a turn at 40km/h or less. This allows you to anticipate possible risks sooner.

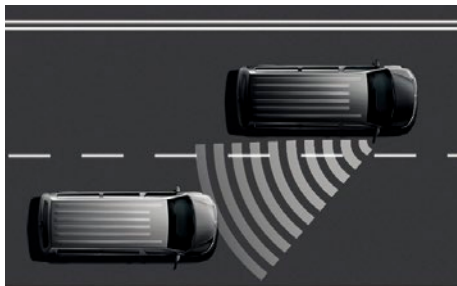
C MC MH



Exterior Chrome Highlights. Enhance the appearance of your vehicle with the added class of chrome highlights on the front grill, foglights, side and rear trim.

Overseas model shown.

MH



Side assist. Should the sensors register a vehicle in the blind spot when you change lanes, the system will warn you via a visual signal in the door mirror.

Note: Combined with folding mirrors.

C MC



Bi-Xenon headlights with LED daytime running lamps. Illuminate the road ahead with a brighter light than conventional headlights during night time driving. The integrated LED daytime running lights are continually on, making you more easily visible at all times.

MC MH



17" Timaru alloy wheel. This stylish alloy wheel is standard on your Multivan Highline for extra class and elegance.

MH

C standard
MC Multivan Comfortline
MH optional extra
MH Multivan Highline

C Caravelle Trendline

Safety

An important attribute of any Volkswagen people mover is safety – as you would expect given that the most important cargo is people. If you were to strip away the sleek panels, the instrumentation, and the beautifully finished interior, you would see the rigid construction that lies just beneath the surface. Meticulous German engineering gives this framework incredible strength to shield occupants. With safety equipment such as multiple airbags, ABS with EDL, ASR, EBD and ESP with Brake Assist, the environment in the people mover range is not just comfortable – it's also protective. There are levels of safety for those beyond the cabin – for instance the standard inclusion of Rear View Camera on Multivan Highline, which provides the driver with a clear understanding of what, and who, is directly behind the vehicle for safe reversing. And subtle lighting ideas and sensing technologies add to the passive systems of the range – for instance, turning lights can help to illuminate blind curves and intersections, and optional features like “Side Assist” make changing lanes in heavy traffic a breeze. No stone is left unturned to make our range of people movers the benchmark in safety.

EBD

Electronic Brakeforce Distribution (EBD) prevents lock-up of the rear wheels when the vehicle weight is transferred to the front wheels under heavy braking.



The seat belt warning reminds the driver that seat belts are not fastened.



The **Electronic Stabilisation Programme (ESP)**, including hill holder, helps prevent the vehicle from swerving in critical driving conditions.



The **Anti-lock Braking System (ABS)** prevents wheels from locking up and improves manoeuvrability.



The **Brake Assist system** recognises the speed at which the brake pedal is pushed. Under reflex or emergency braking, the system senses the urgent need and applies full brake pressure more rapidly.

4MOTION

The addition of 4MOTION will provide your Volkswagen people mover with sure footed agility in the most trying of surface conditions and can take you further off the beaten track. 4MOTION is as simple as it is effective – at its heart is a unique Haldex system that anticipates slip, rather than reacting to it once the tyres lose traction. The system draws data from a range of sensory inputs on the running gear. This data is delivered immediately into an electronically controlled clutch which constantly calculates load requirements and pushes drive between the front and rear wheels with a wide range of variability according to surface conditions and driving forces. 4MOTION excels on bitumen roads and comes into its own on open terrain, providing the tangible benefits of all-wheel drive.



Wading depth: up to 300mm. With the Multivan, you can cross deep puddles and shallow water with the greatest of ease and safety. Measured at a full load and at a maximum speed of 30km/h.



Departure angle: 17°, approach angle: 21°. Short inclines are no problem for the Multivan. Thanks to the wheelbase, the bumpers don't make contact with the ground even at an approach angle of 21°. Measured with standard equipment and full load.



Ramp angle: 14°. The greater the ground clearance, the more freedom you'll have on your adventures. The Multivan can even cope on crests with a ramp angle of 14° without difficulty. Measured with standard equipment and full load.



Hill-climbing ability: 37°. The Multivan can master tarmac passes, medium slopes and steep inclines with ease up to a slope of 37° with the 132kW engine* and a vehicle weight of 3,000kg.

* Figures may vary depending on the equipment line and engine type. Please note that these are statically calculated figures. Please contact your local Volkswagen dealer for details of the standard equipment and optional extras applicable.

Accessories

Life is about choices. And choices are what makes Volkswagen people movers so essential for many lives. Quite apart from the functionality, versatility, engineering, clever design and driving pleasure of the Volkswagen people mover range, there is a range of useful accessories that add considerable value to your people mover and make your life all the more enjoyable.



Roof bar set and ski & snowboard holder. The roof bar set with ski and snowboard holder is perfect for transporting your gear. The holder locks both skis and snowboards securely in place, so you are free to fill up your boot with everything else you need for the trip.



Luggage net. Life is full of small items to carry here and there. Not to mention longer trips away. Secure it all with this useful luggage net that hooks easily onto the boot eyelets.



Boot sill protector. This boot sill protector is shaped to fit the curvature of the boot to shield against scratches during standard loading and unloading.

Overseas model shown.



Textile floor mats. These textile floor mats look great with the interior and do an excellent job of protecting your floor from dirt, mud, dust and wear and tear.

Overseas model shown.

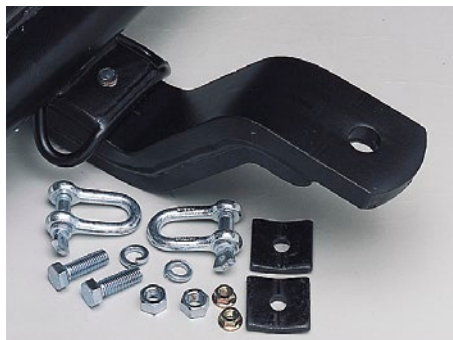


Slimline weather shields. These slimline weather shields complement the shape of your windows and can be fitted to driver and passenger doors, allowing you to have the windows part way down when it rains.



RNS510 Satellite navigation system is Volkswagen's state-of-the-art innovation, with a touch sensitive display for easy operation. High-res 16:9 screen and high performance processor, this system will calculate your travel routes at incredible speeds.

Standard on Multivan Highline.



Towbar. For times when you need to carry more or do want to tow a trailer, these genuine towbars have a 2,000kg braked towing capacity and 750kg unbraked with a 100kg downball weight.



18" Dakar alloy wheel – black. This alloy wheel will complement the sleek design of your People Mover.

Images are for illustration purposes only. Overseas specification vehicles are shown.

Amazing engines

The Volkswagen range of people movers is powered by some brilliantly designed engines.

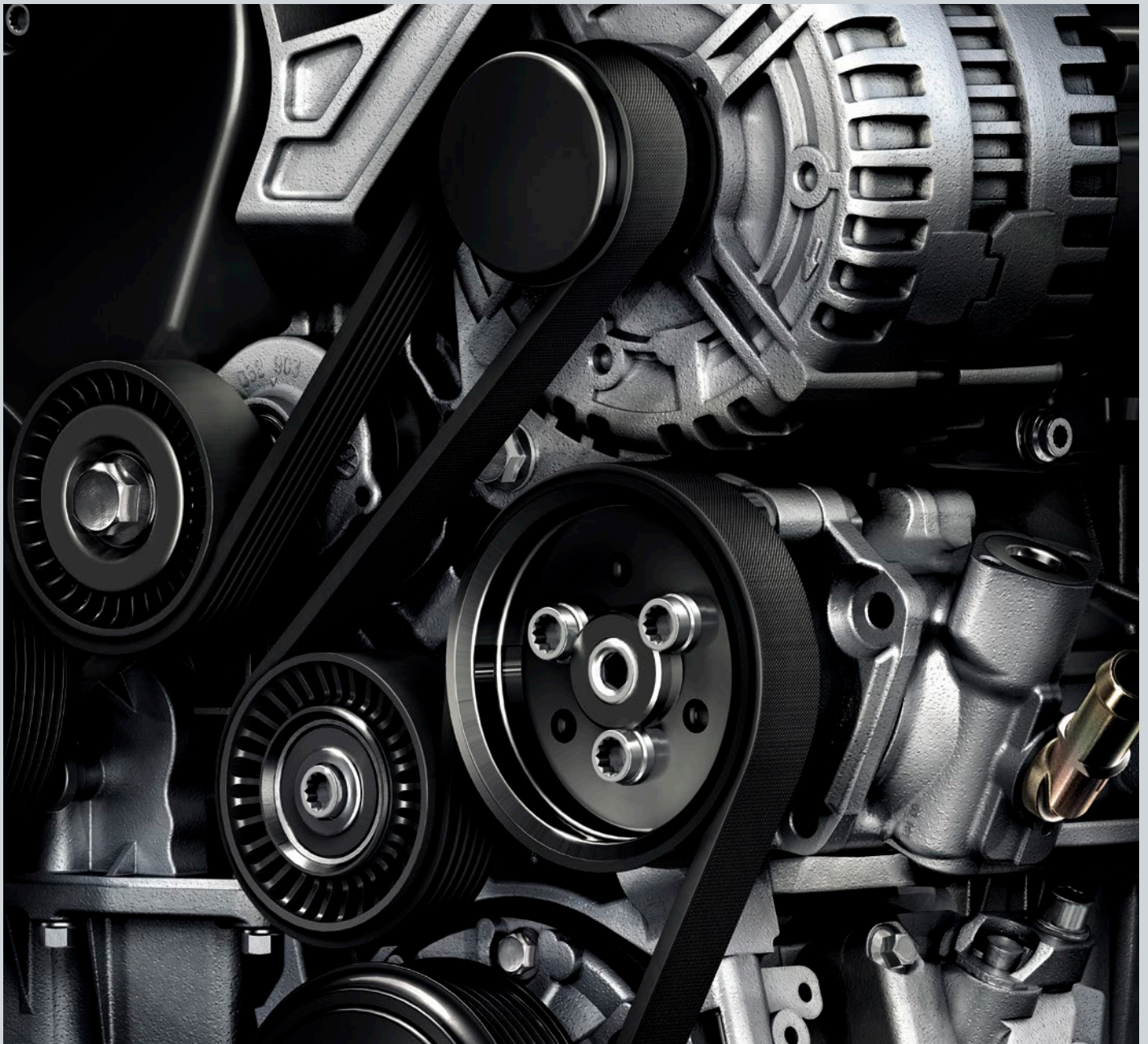
The latest generation of TDI engines have an excellent reputation for their high torque and superior levels of efficiency. These engines have been specially designed with the driver and the environment in mind and boast improved fuel consumption and CO₂ emissions. The experience behind the wheel is smooth and pleasurable with

seamless gear changes thanks to the silky 7-speed DSG transmission. And for those looking at additional grip off the road, there's always the option of 4MOTION all-wheel drive.

Caravelle models feature a turbocharged 2.0 litre TDI340 power train generating up to 340Nm of torque – that's plenty of power to move lots of people and luggage. This Euro 5 compliant engine is available in Multivan, but Multivan customers also have the choice of stepping up to a high

performance TDI400 twin turbocharged engine. If you're looking for extra power but don't wish to sacrifice fuel efficiencies along the way, then this is one incredible engine to have under the bonnet of your Multivan.

Volkswagen's TSI350 continues to break new ground with TSI technology. This engine, coupled with 7-speed DSG transmission delivers an amazing 150kW of power and a healthy 350Nm of torque, and is available in Multivan Comfortline.



Technical specifications

Engine	Caravelle TDI340	Multivan TDI340	Multivan TSI350	Multivan TDI400
Type	4 Cylinders, DOHC, 16 Valve	4 Cylinders, DOHC, 16 Valve	4 Cylinders, DOHC, 16 Valve	4 Cylinders, DOHC, 16 Valve
Capacity, litres/cc	2.0 / 1,968	2.0 / 1,968	2.0 / 1,984	2.0 / 1,968
Installation	Transverse installation	Transverse installation	Transverse installation	Transverse installation
Bore x Stroke / Compression ratio	81.0mm x 95.5mm / 16.5:1	81.0mm x 95.5mm / 16.5:1	82.5mm x 92.8mm / 9.6:1	81.0mm x 95.5mm / 16.5:1
Construction materials	Alloy head with cast iron block	Alloy head with cast iron block	Alloy head with cast iron block	Alloy head with cast iron block
Maximum power, kW @ rpm	103 @ 3,500	103 @ 3,500	150 @ 4,200 – 6,000	132 @ 4,000
Maximum torque, Nm @ rpm	340 @ 1,750 – 2,500	340 @ 1,750 – 2,500	350 @ 1,500 – 4,000	400 @ 1,500 – 2,000
Induction type	Single turbocharger	Single turbocharger	Single turbocharger	Bi-turbochargers
Intercooled	Yes	Yes	Yes	Yes
Emissions standard*	Euro 5 with Diesel Particle Filter (DPF)	Euro 5 with Diesel Particle Filter (DPF)	Euro 5	Euro 5 with Diesel Particle Filter (DPF)
Transmission – automatic	7 Speed DSG	7 Speed DSG	7 Speed DSG	7 Speed DSG
Driven wheels	Front wheel drive	Front wheel drive	Front wheel drive	Front wheel drive/ Optional 4MOTION
Wheels and tyres				
Wheels	Steel 16" x 6.5J (with cover)	Alloy 16" x 6.5J "Colmar"	Alloy 17" x 7J "Cascavel" – Comfortline	Alloy 17" x 7J "Cascavel" – Comfortline Alloy 17" x 7J "Timaru" – Highline
Tyres	215/65 R16 106/104T	215/65 R16C 102/100H	235/55 R17 103W	235/55 R17 103W
Fuel consumption and performance				
Fuel type	Diesel	Diesel	Petrol	Diesel
Fuel system	Common Rail Direct Injection	Common Rail Direct Injection	Direct Injection	Common Rail Direct Injection
Fuel tank capacity, litres	80	80	80	80
	Comb / Urban / Ex Urban • CO₂	Comb / Urban / Ex Urban • CO₂	Comb / Urban / Ex Urban • CO₂	Comb / Urban / Ex Urban • CO₂
Automatic, Litre/100km • CO ₂	8.2 / 10.4 / 6.9 • 216	8.2 / 10.4 / 6.9 • 216	10.1 / 13.5 / 8.1 • 236	8.1 / 10.2 / 6.9 • 214
4MOTION DSG, Litre/100km • CO ₂	–	–	–	8.8 / 11.1 / 7.5 • 232

Drivetrain

Suspension and steering	Caravelle TDI340	Multivan TDI340	Multivan TSI350	Multivan TDI400
Front axle	Independent McPherson struts, sub-frame with coil springs and gas filled dampers			
Rear axle	Semi-trailing independent rear axle with coil springs and anti roll-bar			
Steering	Rack and pinion power steering		Rack and pinion power steering <i>Highline models 'servotronic'</i>	
Brakes				
Front disc brakes – vented, mm	308	308	340	340
Rear disc brakes – solid, mm	294	294	294	294
Brake systems	ESP, ABS, ASR, MSR, EDL and Hill Holder			

* Emission level according to European Regulation (EC) No. 715/2007 and Regulation (EC) No. 692/2008. The information and the specifications contained within this document were correct at the time of issue. Due to our continuous process of improvement our products are continually updated and changes may be made to the specifications from time to time. Not all vehicles or options may be available. Check at time of ordering.

Measurements and statistics

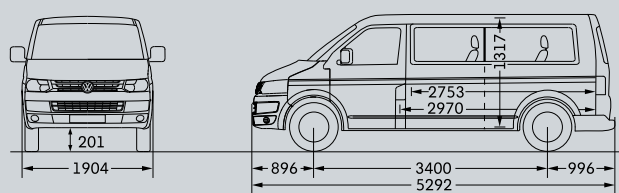
Weights	Caravelle TDI340	Multivan TDI340 Comfortline	Multivan TSI350 Comfortline	Multivan TDI400 Comfortline	Multivan TDI400 Highline
Towing capacity, braked / unbraked, kg	2,000 / 750	2,000 / 750	2,000 / 750	2,000 / 750	2,000 / 750
Towing downball load, kg	100	100	100	100	100
Unladen mass*, kg	2,124	2,179	2,181	2,204	2,249
Unladen mass* (4MOTION models), kg	–	–	–	2,330	2,371
Turning circle, m	13.2	11.9	11.9	11.9	11.9

Exterior dimensions	Caravelle	Multivan
Length, mm	5,292	4,892
Width, mm	1,904	1,904
Width, including door mirrors, mm	2,283	2,283
Height, mm	1,990	1,970
Wheelbase, mm	3,400	3,000
Ground clearance, mm	165	165

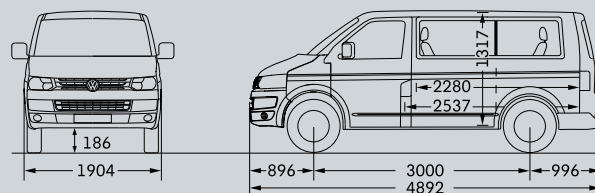
Interior dimensions (Passenger area)	Caravelle	Multivan
Maximum length, mm	2,970	2,537
Maximum width, mm	1,692	1,625
Maximum height, mm	1,317	1,317

Cargo entry	Caravelle	Multivan
Rear tailgate width, mm	1,486	1,486
Rear tailgate height, mm	1,305	1,305
Lateral sliding doors width, mm	1,020	1,020
Lateral sliding doors height, mm	1,284	1,284

Warranty and service	Caravelle	Multivan
Vehicle	3 Years, Unlimited km	3 Years, Unlimited km
Paint / Corrosion	3 Years / 12 Years	3 Years / 12 Years
Road side assistance	3 Years, Unlimited km	3 Years, Unlimited km



Caravelle



Multivan

* The Unladen Mass (UM) includes 10L of fuel, vehicle fluids and no occupants. Figures quoted are for base model vehicles only.

Standard and optional equipment

Safety and security	Caravelle Trendline	Multivan Comfortline	Multivan Highline
Rigid safety cell with front and rear crumple zones	S	S	S
Driver and front passenger airbag	S	S	S
Driver and front passenger head/thorax airbags	O	S	S
Child safety locks on rear doors	S	S	S
Curtain airbags – passenger area	–	S	S
Alarm with internal monitoring	O	S	S
Automatic locking after take off (programmable)	S	S	S
Remote central locking with 2 remote keys	S	S	S
3 point seat belts for all passengers	S	S	S
Child seat anchor points mounted on back of 2nd row seating	S	S	S
Child seat anchor points mounted on back of 3rd row seating	S	S	S
Front height adjustable 3 point seat belts with pre-tensioners	S	S	S
Daytime running lights	S	S	S
Rear fog lamp	S	S	S
Front foglights with cornering function	O	O	S
Rain sensing wipers and auto dimming inside mirror	–	S	S
Light and Sight package – includes dusk sensing headlights with ‘coming home’ function (includes rain sensing wipers and auto dimming rear view mirror for Caravelle Trendline)	O	O	S
Driver assist			
Electronic Differential Lock – front (EDL)	S	S	S
Electronic engine immobiliser	S	S	S
Electronic Stabilisation Programme (ESP)	S	S	S
Brake Assist (BA)	S	S	S
Anti-lock Braking System (ABS)	S	S	S
Anti-Slip Regulation (ASR)	S	S	S
Hill Holder	S	S	S
Front and rear parking sensors with acoustic warning	O	S	S
Rear parking sensors with acoustic warning	O	–	–
Audio and media			
RCD210 CD/Radio with MP3 Single Din and 4 Speakers	S	–	–
RCD310 CD/Radio with MP3 Double Din with Aux-In	O	–	–
RCD310 CD/Radio with MP3/RDS, iPod®/iPhone® integration and Aux-in + 8 speakers	–	S	–
RNS315 Satellite Navigation / Multimedia 5” touch screen, SD card reader, Aux-in socket. Also includes AM/FM radio with RDS and single CD player	O	O	–
RNS510 Satellite Navigation/CD/Radio with 30GB HDD/MP3/RDS/Aux-in iPod®/iPhone® integration and multifunction display with RVC Plus + 8 speakers	O	O	S
Rear View Camera (RVC Plus) – only with RNS510	O	O	S
Bluetooth™ Connectivity	O	S	S
Exterior			
Electrical door mirrors with heating function	S	S	S
Electric sunroof	–	O	O
Electric folding door mirrors	–	O	O
Mounting rails on the roof (preparation for movable roof rack)	S	S	S
Rear window with wash/wipe and intermittent wipe	S	S	S
Front and rear mud flaps	S	S	S
Halogen twin headlights with polycarbonate casing	–	S	S

*iPod® and iPhone® are registered trademarks of Apple Inc.

Standard and optional equipment

Exterior	Caravelle Trendline	Multivan Comfortline	Multivan Highline
Bi-Xenon headlights with LED daytime running lights	–	O	O
Body coloured bumpers	O	S	S
Body coloured side moulding strips	–	S	S
Body coloured exterior rear view mirror covers	S	S	S
Body coloured door handles	–	S	S
Dark tinted windows in passenger compartment	O	O	S
Metallic paint	O	O	O
Pearl effect paint	O	O	O
Wheels and tyres			
16" x 6.5J Alloy wheels "Colmar" with 215/65 R16C 102/100H tyres	O	S	–
17" x 7J Alloy wheels "Cascavel" with 235/55 R17 103W tyres	–	S (TSI350/TDI400 only)	–
17" x 7J Alloy wheels "Timaru" with 235/55 R17 103W tyres	–	–	S
18" x 8.0J Alloy wheels "Toluca" with 255/45 R18 103W tyres	–	–	O
Full size spare wheel (not available with optional 18" wheels)	S	S	S
Seats			
Seat layout, 2/2/2/3	S	–	–
Seat layout, 2/2/3	–	S	S
Front row – Driver and front passenger seats with height/lumbar adjustment and armrests	S	S	S
Second row – 2 removable swivel seats with armrests and storage drawers. Mounted on rails to allow longitudinal adjustment	–	S	S
Third row – 3 seater bench, removable and reclining. Mounted on rails to allow longitudinal adjustment	–	S	S
Seats with cloth trim	S	S	–
Seats with leather appointed trim*	–	–	S
Seat heater for front seats	–	–	S
Central armrest in 3 seater bench seat	–	–	S
Windows and doors			
Power front windows, with 'anti-pinch' roll-back function	S	S	S
Driver and passenger window with one-touch up/down	S	S	S
Sliding side windows front and fixed rear in passenger compartment	S	S	S
Dual power sliding doors with remote operation	O	O	S
Air conditioning			
3 Zone "Climatronic" climate control air conditioning	S	S	S
Interior			
Retractable sun blinds in passenger area	–	S	S
Rear roof lighting with ventilation, climate control and reading lights	–	S	S
Chrome plated load restraining hooks	–	S	S
Height and reach adjustable steering wheel	S	S	S
Leather trimmed gearshift knob and boot	–	S	S
Leather steering wheel with multifunction controls	O	S	S
Luggage cover, removable	–	S	S
Luggage compartment light	–	S	S
6 Passenger assist grips with damper	–	S	S
7 Passenger assist grips, 2 "A" and 2 "C" pillar handles	S	–	–
Vanity mirrors in sunvisor	S	S	S
12V sockets in the front and passenger compartments	S	–	–
12V sockets in the front, middle and rear compartments	–	S	S

* Some parts of the leather appointed seat upholstery will contain man made material.

Standard and optional equipment

Interior	Caravelle Trendline	Multivan Comfortline	Multivan Highline
Step inserts in foot well – with Multivan lettering	–	S	–
Step inserts in foot well – with Highline lettering (chrome)	–	–	S
Chrome rear sill plate and coat hook	–	–	S
Good night package – includes window blinds, waste bin, drawers in 3-seater bench and mini flashlight	–	O	O
Cooling/warming box (32 litre) including second battery	–	O	O
2 Cup holders and 2 x 1.5 litre bottle holders	S	–	–
4 Cup holders and 3 x 1.5 litre bottle holders	–	S	–
8 Cup holders and 3 x 1.5 litre bottle holders	–	–	S
Convenience			
Dual power sliding doors with remote operation	O	O	S
Cruise control	O	S	S
Side assist (SWB Vehicles only)	–	O	O
Instrumentation			
Multifunction “Plus” trip computer	O	S	S
Speedometer and tachometer, electronic odometer and trip meter, digital clock, fuel and coolant indicators, low fuel warning light, outside temperature and fuel gauge.	S	–	–
Speedometer and tachometer, electronic odometer and trip meter, digital clock, fuel and coolant indicators, low fuel warning light, brake pad wear indicator, white adjustable illumination and additional temperature and fuel gauge.	–	S	S

S = Standard – = Not Available O = Optional

The Bluetooth™ word mark is owned by The Bluetooth SIG, Inc. Not all devices will be compatible and functionality will vary depending on the device.

Caravelle paint colours

The bodywork is galvanised first to give your Volkswagen optimum protection against mechanical and chemical influences. Only then is the paint applied in several layers and left to harden. The result is a scratch-resistant, hard finish for the top coat. You therefore leave a brilliant impression with your friends and business partners.



Sunny Yellow
Solid paint
M9M9



Candy White
Solid paint
B4B4



Salsa Red
Solid paint
4Y4Y



Ontario Green
Solid paint
V7V7



Olympic Blue
Metallic paint*
S6S6



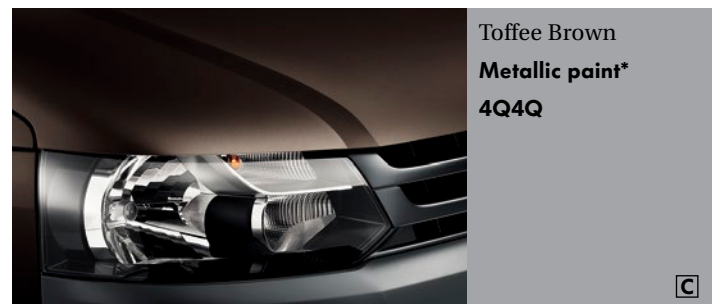
Reflex Silver
Metallic paint*
8E8E



Natural Grey
Metallic paint*
M4M4



Sand Beige
Metallic paint*
P8P8



Toffee Brown
Metallic paint*
4Q4Q



standard Caravelle Trendline
 optional extra



Caravelle trim

Top quality robust materials and excellent workmanship are absolutely essential for hard-wearing, durable seat upholstery. We offer a large range of colours and designs that are ideally aligned with the available interior equipment and paint finishes.



* Metallic and pearl effect paint are available at extra cost. The illustrations on these pages can only be regarded as a general guide as the printing process cannot render the colours with absolute accuracy. Please contact your local Volkswagen dealer for details of the standard equipment and optional extras available.

Multivan paint colours

The bodywork is galvanised first to give your Volkswagen optimum protection against mechanical and chemical influences. Only then is the paint applied in several layers and left to harden. The result is a scratch-resistant, hard finish for the top coat. You therefore leave a brilliant impression with your friends and business partners.



Candy White
Solid paint
B4B4

MC MH



Salsa Red
Solid paint
4Y4Y

MC MH



Ontario Green
Solid paint
V7V7

MC MH



Natural Grey
Metallic paint*
M4M4

MC MH



Night Blue
Metallic paint*
Z2Z2

MC MH



Reflex Silver
Metallic paint*
8E8E

MC MH



Sand Beige
Metallic paint*
P8P8

MC MH



Olympic Blue
Metallic paint*
S6S6

MC MH



Toffee Brown
Metallic paint*
4Q4Q

MC MH

standard **MC** Multivan Comfortline
 optional extra **MH** Multivan Highline



Black Berry
Metallic paint*
COC0

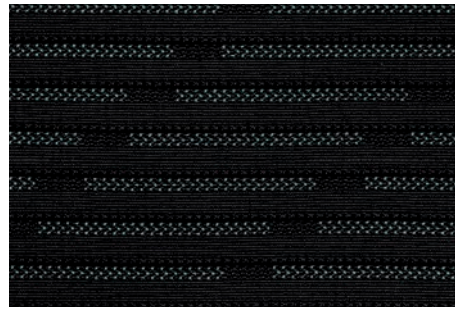


Deep Black
Pearl effect paint*
2T2T

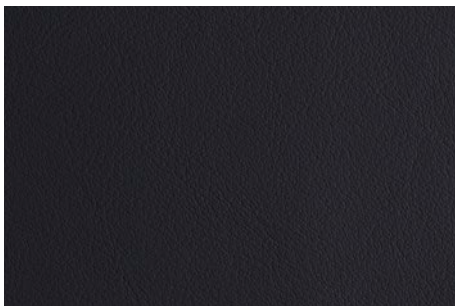


Multivan trim

High-quality, robust materials and skilled workmanship are essential in the manufacturing of hard-wearing seat upholstery and fine leather appointed trim. We also offer you several colours and designs that have been carefully tailored to the paint finishes and interior fittings.



Cheyenne
Anthracite
Cloth
ZH



Napa
Anthracite
Leather appointed
ZH



Napa
Desert Beige
Leather appointed
MD



* Metallic and pearl effect paint are available at extra cost. The illustrations on these pages can only be regarded as a general guide as the printing process cannot render the colours with absolute accuracy. Please contact your local Volkswagen dealer for details of the standard equipment and optional extras available.

Owning a Volkswagen

Volkswagen New Vehicle Warranty

Volkswagen Caravelle and Multivan are covered by a 3-year/unlimited kilometre manufacturer's warranty, which includes Volkswagen Assist (24 hour roadside assistance). People Movers are also covered by 3-year paintwork and 12-year anti-corrosion perforation warranty.

Volkswagen Assist 24 hour roadside assistance

As a valued customer, you can be assured that, wherever you travel within Australia, you will have access to roadside assistance, 24 hours a day, 365 days a year. This is complimentary for the duration of the vehicle's original Volkswagen warranty period. You will receive help in the event of a breakdown or accident and, if required, your vehicle will be mobilised or transported to an Authorised Volkswagen Repair Centre.

Volkswagen Extended Warranty

Why not continue the confidence of a Volkswagen Warranty by purchasing a Volkswagen Extended Warranty? For further details on this option, please contact your local Volkswagen Dealer.

Volkswagen Service

Your Authorised Volkswagen Service Centre is part of Volkswagen's global Quality Management System, ensuring all dealers are certified to ISO 9001:2000 – an internationally recognised Quality Standard. Authorised Volkswagen Service Centres have factory trained technicians equipped with the very latest diagnostic equipment, specialist tooling and Volkswagen Genuine Parts. An Authorised Volkswagen Service Centre undertakes work in accordance with factory specified guidelines and maintenance schedules.

Volkswagen Genuine Parts®

Volkswagen Genuine Parts® are designed for your vehicle and approved by Volkswagen, with particular regard to safety. The workmanship, dimensional accuracy and materials used in these parts comply with factory specifications. To ensure safety and reliability, Volkswagen recommends the use of Volkswagen Genuine Parts®. Volkswagen Authorised Dealers offer a 2-year warranty on Genuine Parts from the date of purchase.

Capped Price Servicing

Volkswagen Commercial Vehicles have introduced Capped Price Servicing across the entire Commercial Vehicle Range. This new program supports our commitment to customer satisfaction and provides total transparency for complete peace of mind.

All vehicles registered after 1 January 2013 will be covered for a total of 90,000km (or 180,000km for Crafter models) or six years (whichever comes first). Our scheduled service includes the regular replacement of oil filters, engine oil and sump plug washer at each service interval, as well as the standard replacement of the air filter (at 45,000 and 90,000km) and spark plugs (every 60,000km).

To reference how much each service will cost for your specific Volkswagen Commercial Vehicle, you can contact your participating Volkswagen dealer or go to www.volkswagen-commercial.com.au



Environment

On a local level, we have undertaken a number of initiatives to reduce the environmental impact of our business processes, including careful recycling of office waste, for example. Energy usage is being reduced through lights controlled by motion sensors in toilets, kitchens and meeting rooms.

But there's no question that the area in which we can contribute most to environmental sustainability is with our vehicles. Our TSI engines combine innovative and world leading direct injection petrol technology with turbocharging and are extremely fuel efficient with reduced CO₂ emissions.

Our TDI diesel engines consume less fuel and emit less exhaust fumes offering high torque and performance, while our diesel particulate filters extract soot from the exhaust fumes. All Multivan and Caravelle engines already fulfill the very stringent Euro 5 emissions standards.

Our dual-clutch DSG gearbox provides the comfort of conventional automatic transmission and the dynamic drive of a manual transmission. It has significantly lower fuel consumption in comparison with a conventional automatic transmission with torque conversion.

General information

Volkswagen is distributed by Volkswagen Group Australia Pty Ltd. 24 Muir Road, Chullora, NSW 2109. ABN 14 093 117 876. Specifications are as planned at January 2014 for model year 2014 and are subject to change without notice or obligation. Cars and accessories are shown for illustrative purposes only and may not depict Australian specifications. Fuel consumption figures according to Australian Design Rules (ADR) 81/02. All Volkswagen approved parts and accessories are warranted for 2 years/unlimited kilometres. All warranties implied by legislation or otherwise are excluded to the maximum extent permitted by law. The liability of Volkswagen shall, subject to the law, be limited at Volkswagen's discretion: 1. In the case of the goods, the repair or the cost of repair, or the replacement or the cost of replacement; and 2. In the case of services, the re-supply of the services or the cost of re-supply of the services. All information in this brochure is correct at time of publication, however variations may occur from time to time and Volkswagen, in so far as it is permitted by law to do so, shall not be liable in any way as a result of any reliance by any person on anything contained in this brochure. The colours shown in the brochure are indicative only and may vary from actual items owing to the printing process. Authorised Volkswagen dealers will provide up-to-date information on model application, design feature, prices and availability on request. Volkswagen Insurance & Volkswagen Extended Warranty are provided by Allianz Australia Insurance Limited (Allianz), AFS Licence No. 234708, ABN 15 000 122 580. In arranging this insurance, Volkswagen Financial Services Australia Limited, ABN 20 097 071 460 & Volkswagen Group Australia Pty Ltd, ABN 14 093 117 896 and the authorised dealers act as agents of Allianz and not as your agent. Volkswagen Finance is a trading name of Volkswagen Financial Services Australia Limited. Locked Bag 6252, Regents Park, NSW 2143. Tel: 02 9695 6311.

The Caravelle and Multivan

February 2014

Publication: VGACAMU004D

www.volkswagen-commercial.com.au

Your Volkswagen Dealer

