



Das Auto.

Polo



Content overview

- 3 Introduction
- 5 Range overview
 - Trendline
 - 77TSI Comfortline
 - 66TDI Comfortline
 - GTI
- 15 Exterior
- 17 Interior
- 19 Technology
- 21 Safety
- 23 Optional Packages
- 25 Volkswagen Genuine Accessories
- 27 Specifications
- 35 Colours and Upholstery
- 36 Polo Capped Price Servicing
- 37 Glossary
- 38 Fuel Saving Tips
- 39 Owning a Volkswagen
- 40 Corporate Sustainability – Think Blue.



A car just for you



Whether you're cruising along the coast, cutting through city traffic or simply heading out with friends and family, the Volkswagen Polo will get you there with confidence and style.

The Polo is a car whose parts fit together perfectly, creating a vehicle that's fun to drive, economical and somehow more than the sum of its parts. Call it good design, call it quality engineering or maybe just call it 'Volkswagen' – whatever it is, the Polo has it in spades.

It's also a car that stands out from the crowd. It's a well-proportioned vehicle and its interior shows the attention to detail that has become Volkswagen's hallmark.

Four models are available: the well-appointed Trendline (available with a 5-speed manual or 7-speed DSG transmission); the sporty 77TSI Comfortline; the thrifty 66TDI Comfortline (with diesel engine) and the potent GTI.

Common to all models are a number of key features. These include Bluetooth® connectivity, daytime driving lights, power windows, Hill Start Assist, Traction Control and Braking Control, six airbags, head restraints, Media Device Interface (MDI) and more. The Polo may be a small car, but there's nothing under-sized about its specifications or performance. In fact, it has a 5-star ANCAP safety rating – the highest rating possible.

The Polo was also named World Car of the Year 2010; a terrific accolade but also further proof, if any were needed, that this is a car with universal appeal and that provides great value to motorists no matter where in the world they may be.

Range Overview

Trendline – Small is beautiful

Confident, bold and stylish – and that's even before you step inside. The Trendline is well-appointed and makes a big impression with a generous array of standard features both inside and out, including a finely tuned entertainment system and impressive safety devices.



Comfortline – Memory maker

Take your on-road enjoyment to a whole new level with the 77TSI Comfortline. Because sometimes things need to feel as good as they look. With a front centre armrest, leather multi-function steering wheel and convenient cruise control, every moment in the driving seat will be memorable.



66TDI Comfortline – One for the drivers

Volkswagen has been refining its diesel technologies for years, and the result is a range of highly sophisticated engines. The Polo 66TDI Comfortline's 1.6L Common Rail turbo diesel engine delivers 66kW of power and 230Nm of torque while sipping just 4.6L of fuel per 100km (combined)*. As a Comfortline model it's also stylish and comfortable inside and out; just the thing for drivers who want to minimise their environmental impact without compromising on the driving experience.



GTI – Pocket rocket

Three legendary initials. The Polo GTI is a real pocket rocket and it more than lives up to the reputation of the GTI badge. From the classic 'honeycomb' grille with red highlights to the 1.4L, twin-charged TSI engine (outputting 132kW and 250Nm), Jacky tartan sports seat upholstery and 17" Detroit alloy wheels, it's a package that excites all the senses whether it's standing still or gliding through the curves.



Trendline

Keeping you on the move



Looking for a car that's dynamic, stylish and makes a statement? The Polo Trendline has it all. No more blending into the background – stand out from the crowd and step into the spotlight, with the 5 door Trendline's exceptional array of standard features making a perfect package. Both the 5-speed manual and the optional 7-speed automatic DSG transmission models provide lively performance, with the 1.4 litre petrol engine kicking out 63kW of power and 132Nm of torque.

The innovative technology extends to the inside too. A Media Device Interface (MDI) and Bluetooth® connectivity are standard on the vehicle. The RCD310 radio system comes complete with MP3 compatibility, giving you the option of listening to your all-time favourite tracks, without the interruptions.

Of course, if you welcome interruptions from your passengers, then the Trendline's cabin accommodates five – and you'll feel even cooler with the chillable glove compartment and front and rear cup holders. And should you decide to splurge at the shops or head off on an action-packed adventure, then the ultra efficient 60/40 split folding rear seats fold down to create a level cargo floor for those extra-long bits and pieces.



Safety-wise, the standout features speak for themselves. Trendline benefits from no less than six driver and passenger airbags, Electronic Stabilisation Program, Anti-Slip Regulation (ASR) traction control and ABS brakes with Brake Assist.

Hill Start Assist (HSA) won't let you down on tricky gradients, and Electronic Differential Lock (EDL) will keep you from getting in a spin by automatically braking a spinning wheel, diverting power to the wheel with grip to give you optimum traction when you need it most.



77TSI Comfortline

More than meets the eye



Life is hectic: things to do, places to go, people to see. But getting there has never been so much fun. And whatever the occasion, the 77TSI Comfortline makes for the perfect getaway car, with all the convenience, reliability and comfort you'd expect from a Polo.

Its 1.2 litre TSI petrol engine delivers 77kW of power and 175Nm to get you where you need to be, and its strong silhouette, athletic lines and stylish Lakeside 15" alloy wheels can't help but get you noticed. Even better, the 77TSI Comfortline's fuel consumption impresses at just 5.5L/100km*.

The sleek interior can't help but make a further lasting impression, oozing style, sophistication and a laid-back elegance. Feel the difference for yourself as you sink into the tasteful cloth seats and grip the multi-function leather steering wheel, complete with mounted audio controls. Take in the multi-function display, giving you everything you need to know at a glance, and set your own beat with the MP3 compatible CD player.

And when looking this good just gets too much, take comfort in the cruise control feature, air-conditioning and front centre armrest.

Of course, safety doesn't take a back seat when it comes to the 77TSI Comfortline. Whether you opt for the 6-speed manual or the 7-speed DSG transmission, you can rest easy in the knowledge that you're driving a 5-star ANCAP safety rated-car. It's easy to see why, with its multitude of driver and passenger airbags, Electronic Stabilisation Program (ESP), ABS brakes with Brake Assist, Electronic Differential Lock (EDL) and Anti-Slip Regulation (ASR) traction control.



66TDI Comfortline

Power and thrift



There's a reason why diesel engines are becoming an ever more popular choice among discerning motorists. They're quiet, fuel efficient, and offer driving characteristics to suit every driver, from the suburban commuter to the dedicated cruiser.

The 66TDI Comfortline is powered by an advanced 1.6 litre Common Rail turbo diesel engine. The Common Rail fuel injection system uses a high-pressure fuel rail to deliver precisely timed and carefully measured amounts of fuel to the cylinders for maximum performance and efficiency; the turbocharger provides a boost to performance but more importantly, has an important role in reducing fuel consumption.

The result? A healthy 66kW of power and a generous 230Nm of torque, combined with a fuel consumption of just 4.6L per 100km*. This translates to a smooth, powerful drive, with plenty of pickup at low revs and effortless cruising and acceleration at speed.



But of course there's more to the 66TDI Comfortline than its engine and performance. As a Comfortline model it also includes a luxurious interior fit-out. Chrome highlights, multi-function leather steering wheel, front and rear power windows and an adjustable boot floor height will all make you feel at home and comfortable as soon as you take your seat. On the outside, Lakeside 15" alloy wheels add a touch of class and emphasise the Polo's classic lines.

On the technology side it includes six airbags, Electronic Stabilisation Program (ESP), ABS brakes with Brake Assist, Electronic Differential Lock (EDL) and Anti-Slip Regulation (ASR) – all of which help it achieve the highest possible ANCAP safety rating (5 stars).

It's a car that will fit in easily with your lifestyle, no matter what you plan to do or where you plan to go. Best of all, it'll take you there at a canter, in comfort and style.



GTI

An emphatic statement



Big shoes for a little car to fill. The GTI badge is a Volkswagen hallmark of performance, dynamics and style, and the Polo GTI doesn't disappoint. At its heart is the engine: a 1.4 litre, twin-charged TSI engine that kicks out a mighty 132kW of power and 250Nm of torque. Mated to a smooth-shifting, 7-speed Direct Shift Gearbox (DSG) as standard, the power makes it to the ground courtesy of distinctive 17" Detroit alloy wheels shod with low-profile, high performance tyres.

Handling dynamics are razor sharp, thanks to the tuned suspension and Extended Electronic Differential Lock (XDL) system, which helps prevent wheelspin and understeer. And you'll definitely feel in control with the flat-bottomed, three-spoke leather steering wheel (with red highlight stitching) and Jacky tartan-upholstered sports seats.

Available as a 3 or 5 door hatch body style, you'll love the way it looks. The famous GTI badge and honeycomb grille with red highlights make a clear statement, as do the (optional) Bi-Xenon headlights with LED daytime driving lights, red brake calipers and classic Polo lines. Not that it's spartan inside. Bluetooth® phone connectivity, automatic climate control air conditioning, rain sensing windscreen wipers and an automatically dimming interior rear-view mirror help you keep your eyes on the road and your hands on the wheel. Meanwhile, the Media

Device Interface (MDI) with USB connection cable (iPod cable available separately) and the RCD510 touchscreen audio system with 6 disc CD changer and SD slot will keep your favourite tunes playing no matter what media they're on.

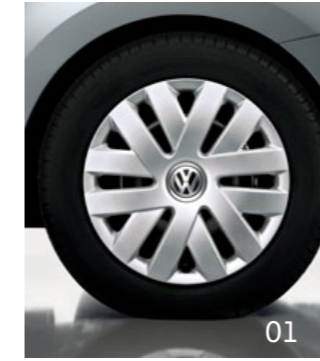
So if you're looking for a pocket rocket with a dash of class, look no further: Polo GTI is the car for you.

Exterior

Style and value

Clean, purposeful, dynamic. The Polo's external simplicity belies the many hours of careful design work that have gone into improving its aerodynamics and aesthetics. Its profile is confident, its stance purposeful – this is a car that knows what it is and where it's going.

The grille and headlights accentuate the Polo's low centre of gravity while its distinctive tail lights emphasise its broad shoulders. The integrated roof spoiler, side skirts and streamlined side mirrors complete the stylish, aerodynamic design.



01, 02 & 03. Wheels

Wheels are an important part of any car's appearance and the Polo range has a number of options, including 15" full wheel trims; Lakeside 15" alloy wheels (standard on 77TSI Comfortline and 66TDI Comfortline); and Detroit 17" alloy wheels (standard on GTI).

04. Bi-Xenon headlights with LED daytime driving lights

Optional on the GTI, Bi-Xenon headlights produce even more light than their halogen counterparts, providing improved visibility and an expanded field of view. The LED daytime driving lights further improve visibility in all driving conditions.

05. Panoramic electric glass sunroof

An option for the Comfortline and GTI variants, the Polo's panoramic, electrically-operated glass sunroof lets in the sun and air when conditions are good, and its integrated wind deflector and sunblind keeps them out when they're not. Simple, effective and highly functional – just what you'd expect on a Polo.

06. Daytime driving lights (not pictured)

When you're on the road it's not just important to see clearly; it's also important to be seen clearly. The Polo's daytime driving lights help ensure that other road users will see you coming well before you draw near.

Interior

Home away from home

You're going to spend a lot of time inside your car, so it's important that its interior is pleasing to the eye, comforting to the body and soothing to the nerves. It also needs to present all your car's controls in a logical, easy-to-understand and easy-to-operate fashion.

The Polo's interior has been carefully crafted to meet all these requirements. From the supportive seats to the smallest details of trim and finish, everything is there for one reason and one reason only: your comfort and amenity.



01. RCD510 touchscreen audio system

The Polo GTI's RCD510 audio system will provide crystal-clear audio every time you drive. Controlled via its full-colour touchscreen, it includes a six-disc CD changer with MP3 compatibility and an SD card slot, so it's as versatile as you are.

02. Media Device Interface (MDI)

The Polo's device interface allows you to connect USB devices, data storage devices and Apple* devices, and operate them through the car's in-dash audio system, so you don't need to distract yourself with your portable device's controls. Best of all, it also starts charging your device as soon as it's connected.

03. Automatic dimming rear view mirror

Fitted as standard on the GTI or as part of the Comfort Package on Comfortline models, the automatic dimming rear view mirror uses sensors to detect the light level and adjust the mirror's reflectiveness. This allows it to reduce the amount of light and glare reflected in the mirror, which improves visibility in low-light or night time conditions.



04. Bluetooth® phone connectivity

As much a safety feature as a convenience, Bluetooth® phone connectivity comes as standard on all Polo variants. The ability to make and receive calls hands-free, and to access address book information on the car's touchpad, makes communicating on the move a breeze.

05. Split folding rear seat backrest and seat base (60/40)

The rear seat has a 60/40 split and both sides can be folded down, making the load space fully configurable to suit your requirements.

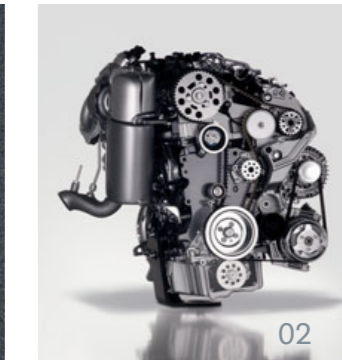


Technology

Designed for drivers

Every Volkswagen combines a range of carefully-selected technologies designed to optimise its performance, comfort and reliability, and the Polo is no exception. Every model has been crafted and comprises an advanced engine (including the availability of TSI and TDI) and transmission (manual or DSG) mated to state-of-the-art running gear and a sophisticated internal fit-out.

From the moment you turn on the ignition you'll know you're in for a great ride; from the moment you move off you'll know how it feels to be driving a piece of automotive art.



01. TSI engine

Volkswagen's TSI technology includes turbo-charged petrol engines with direct injection. The innovative engineering boasts excellent torque and power at low revolutions – for you that means lower fuel consumption and fewer emissions.

02. TDI engine

Volkswagen's cutting-edge TDI engines with Diesel Particulate Filters feature Common Rail technology that injects precise amounts of fuel at extremely high pressure. This not only results in a cleaner burning engine – and years of hard-wearing durability – but exceptional fuel economy, impressive torque and compelling performance whatever the drive.

03. Direct Shift Gearbox (DSG)

DSG is an advanced 7-speed transmission in which the clutch and gearshift are controlled electronically. What makes DSG unique is that the next gear is already pre-selected and awaiting power to be transferred, resulting in a gear change that takes only 3-4 hundredths of a second. The benefits are virtually no interruption to power, traction or acceleration, and additional flexibility. Furthermore, because it ensures optimum transmission of the engine power, DSG provides excellent fuel consumption and driving satisfaction.

04. Hill Start Assist (HSA) (not pictured)

Hill Start Assist holds the vehicle stationary for 1.5 seconds on hills with an incline greater than 5 percent, when the foot brake is released, by temporarily locking the brake pressure. This intelligent feature provides a comfortable hill start, which importantly avoids any rolling back.

Safety

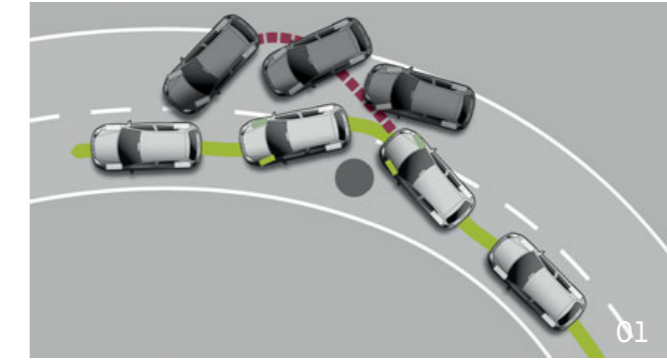
Safety comes as standard, every time

The Polo has been designed with your safety in mind from the outset; keeping drivers and passengers safe has always been a key goal for Volkswagen's designers and engineers.

This is because it combines two kinds of safety measures: active features to help you avoid accidents, like traction control and braking control systems; and passive features

to protect occupants from injury in case of a collision, like crumple zones, airbags and head restraints.

It's all in the design and engineering, and the end result is a car that gives you confidence in all conditions, a car that's as safe as some vehicles twice its size.



01. Traction Control (EDL, ASR and ESP) Braking Control (Brake Assist, ABS and EBD)

Traction control helps to ensure that you maintain control of your vehicle even in difficult driving situations. Built around three distinctive functions, Electronic Stabilisation Program (ESP), Electronic Differential Lock (EDL) and Anti-Slip Regulation (ASR), Traction Control improves grip, helps prevent wheel spin and adjusts engine power automatically depending on the conditions.

02. Airbags

Six airbags (twin front, side and curtain) are standard features. Airbags combine with the seat belts to help reduce the risk of severe head and chest injuries in collisions. When inflated, airbags cushion the head and upper body and distribute the resulting loads over as large an area as possible.

03. Safety optimised head restraints

By working in unison with your vehicle's seatbelts, your Polo's front Safety Optimised Head Restraints are designed to reduce whiplash injury – ensuring optimal protection when you need it most.

04. Crumple zones (not pictured)

The body of the Polo has also been designed with the passengers 'safety in mind. Front and rear crumple zones absorb the energy of an impact in the event of an accident, working together with the safety cell for you and your passengers inside the cabin.

05. Seatbelts (not pictured)

All seats feature three-point seatbelts, while the front seats also have belt pre-tensioners (which tighten the belt on impact) and belt force limiters (which reduce forces on passengers). These help position the body so as to minimise injuries in the event of a crash.

Optional Packages

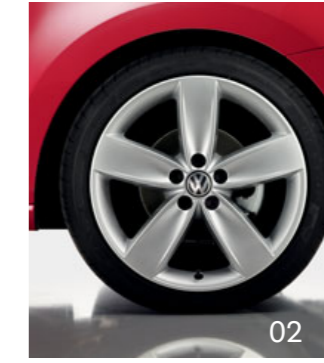
The personal touch

Let's face it, no two car owners are alike. So why should two cars be alike? At Volkswagen we have a range of optional equipment for the Polo that will help you make your car uniquely your own.

So no matter what your lifestyle or automotive requirements are, we're confident that you'll be able to find the Polo that's right for you – and then add the options to make it a perfect fit.



After a little more comfort? A little more style? Then we've got you covered. All our options enhance an already complete offering, making it just that little bit more your own.



01. Comfort Package (not pictured)

Comfortline owners may like to include the Comfort Package, a suite of extras that make driving in, and living with, your Polo just that little bit more enjoyable. It includes rain-sensing wipers, a low tyre pressure indicator, automatic climate control air conditioning and an automatically dimming rear-view mirror.

02. Sport Package

If you want your Comfortline to feel sportier, the Sport Package is a great option offering a number of subtle but effective additions. These include dark tinted rear side and rear windows, sports suspension, a low tyre pressure indicator, 17" Boavista alloy wheels and front fog lights.

03. Alcantara/Leatherette upholstery with heated front sports seats

GTI owners can opt for our Alcantara/Leatherette upholstery with heated front sports seats. These durable, comfortable seats add a touch of panache to the Polo's interior.

Volkswagen Genuine Accessories

The finishing touches

Our comprehensive range of genuine accessories give you the freedom to customise the look and feel of your vehicle to reflect your own personality and individual sense of style. The product philosophy is simple – to deliver innovative technologies and premium design – right down to the finest detail. Each and every genuine accessory has been designed specifically with the Polo in mind and has been

engineered and rigorously tested to ensure that it meets the same high standards of quality as the vehicle itself.

For more information or to experience the full range of genuine accessories designed to suit the Polo, visit your local Volkswagen Dealer.



- 01. Roof Bars
- 02. A range of roof lifestyle accessories
- 03. Mudflaps*
- 04. A range of alloy wheels*
- 05. Floor mats in textile and rubber

- 06. A range of cargo accessories
- 07. Sunblind's rear windows
- 08. Media Device Interface (MDI) connection cables
- 09. Door sill protective strip*
- 10. Tow bar Kit*

It is noted that the above accessories may have an effect on fuel efficiency. Items such as sports equipment and iPod® are for illustration purposes only and are not available for purchase from Volkswagen Group Australia or its dealers. For a full range of genuine accessories please refer to the model specific accessories tab at www.volkswagen.com.au
*Not applicable for GTI model. *Please refer to models' wheel placard for wheel size options.

Specifications

| Safety and Security | Trendline | 77TSI Comfortline | 66TDI Comfortline | GTI |
|-------------------------------------------------------------------------------------------|-----------|-------------------|-------------------|-----|
| → Airbags | | | | |
| Driver and front passenger airbags | S | S | S | S |
| Driver and front passenger side airbags | S | S | S | S |
| Curtain airbags, front and rear | S | S | S | S |
| → Anti-theft | | | | |
| Electronic engine immobiliser | S | S | S | S |
| Alarm system with interior monitoring and tilt sensor | – | O | O | O |
| Security coded audio system | S | S | S | S |
| Visible Vehicle Identification Number (VIN) | S | S | S | S |
| → Body | | | | |
| Door side impact protection | S | S | S | S |
| Fully galvanised with 12 year anti-corrosion perforation warranty | S | S | S | S |
| Rigid safety cell with front and rear crumple zones | S | S | S | S |
| 3 door hatch body style | – | – | – | S |
| 5 door hatch body style | S | S | S | S |
| → Brakes | | | | |
| Automatic flashing brake lights activated in emergency braking situation | S | S | S | S |
| Anti-lock Braking System (ABS) | S | S | S | S |
| Brake Assist | S | S | S | S |
| Electronic Brake-pressure Distribution (EBD) | S | S | S | S |
| Hill Start Assist (HSA) | S | S | S | S |
| Red brake callipers | – | – | – | S |
| → Entry/warning reflector in front and rear doors | S | S | S | S |
| → First aid kit | A | A | A | A |
| → Head restraints | | | | |
| Front safety optimised head restraints, height adjustable | S | S | S | S |
| Rear adjustable and removable (3) | S | S | S | S |
| → Lighting | | | | |
| Daytime driving lights, halogen light integrated in main headlight | S | S | S | S |
| Front fog lights, mounted in lower bumper | – | – | – | S |
| Fog lamp, rear | S | S | S | S |
| → Locking | | | | |
| Remote central locking with deadlock mechanism (separate release for luggage compartment) | S | S | S | S |
| 2 stage unlocking (programmable) | S | S | S | S |
| Automatic locking after takeoff (programmable) | S | S | S | S |
| One touch lock/unlock for driver | S | S | S | S |
| Child safety locks on rear doors | S | S | S | S |
| Fuel filler flap lock/unlock by remote, push to open | S | S | S | S |
| → Luggage cover, removable | S | S | S | S |
| → Seat belts | | | | |
| Front height adjustable with pre-tensioners and belt force limiters | S | S | S | S |

Specifications

| Safety and Security (Continued) | Trendline | 77TSI Comfortline | 66TDI Comfortline | GTI |
|-----------------------------------------------------------------------------------------|-----------|-------------------|-------------------|-----|
| → Seat belts | | | | |
| Visual and acoustic warning for driver and front seat passenger seat belts not fastened | S | S | S | S |
| 3 point seat belts for all passengers | S | S | S | S |
| Child seat anchor points mounted on rear seat (3) | S | S | S | S |
| → Traction control | | | | |
| Electronic Differential Lock (EDL) | S | S | S | S |
| Extended Electronic Differential Lock (XDL) | – | – | – | S |
| Anti-Slip Regulation (ASR) | S | S | S | S |
| Electronic Stabilisation Program (ESP) | S | S | S | S |
| Exterior Equipment/Styling | | | | |
| → Body enhancements | | | | |
| Body coloured bumper bars, door handles and exterior mirrors | S | S | S | S |
| Body coloured lower front spoiler and rear roof spoiler | – | – | – | S |
| Centre lower air intake and radiator grille with black honeycomb inserts | – | – | – | S |
| Dual exposed chrome exhaust tail pipes, left | – | – | – | S |
| Exposed exhaust tail pipe | S | S | S | – |
| Exterior mirror caps, carbon fibre look | A | A | A | A |
| Radiator grille highlight in chrome | – | S | S | – |
| Radiator grille with two red trim strips | – | – | – | S |
| Rear bumper with black diffuser | – | – | – | S |
| Side sill panel extensions in black finish | – | – | – | S |
| Rear tailgate trim, chrome | A | A | A | A |
| Sports body kit | A | A | A | – |
| → Paint | | | | |
| Metallic or Peel Effect paint finish | O | O | O | O |
| → Protection | | | | |
| Bonnet protector | A | A | A | A |
| Headlight protectors | A | A | A | A |
| Loading sill protection | A | A | A | A |
| Mudflaps, front and rear | A | A | A | – |
| Slimline weather shields | A | A | A | A |
| → Roof | | | | |
| Roof bars | A | A | A | A |
| Bicycle, kayak, ski, surfboard and snowboard holders | A | A | A | A |
| Ski and luggage box | A | A | A | A |
| → Suspension | | | | |
| Sports suspension, lowered approximately 15mm | – | – | – | S |
| → Tinted glass | | | | |
| Heat insulating tinted glass | S | S | S | S |

Specifications

| Exterior Equipment/Styling (Continued) | Trendline | 77TSI Comfortline | 66TDI Comfortline | GTI |
|-------------------------------------------------------------------------------------------------------------------------------------------------------------------------------------------------------------------|-----------|-------------------|-------------------|-----|
| → Tow bar Tow bar with 7-pin flat trailer connector and removable tongue | A | A | A | – |
| → Wheels Steel wheels 15x6" with full wheel trims and 185/60 R15 tyres | S | – | – | – |
| Alloy wheels (Lakeside) 15x6" with 195/55 R15 tyres | – | S | S | – |
| Alloy wheels (Detroit) 17x7" with 215/40 R17 tyres | – | – | – | S |
| Alloy wheels (various designs) 15", 16" and 17" (Please consult your Volkswagen Dealer for correct wheel and tyre fitment by model) | A | A | A | A |
| Anti-theft wheel bolts | A | S | S | S |
| Low tyre pressure indicator | – | – | – | S |
| Spare wheel, full size steel | S | S | S | – |
| Spare wheel, steel 16 x 6" The spare wheel and tyre is speed restricted for the Comfortline and GTI models. | – | – | – | S |
| Comfort and Convenience | | | | |
| → Armrests Front centre armrest with storage compartment, height adjustable | – | S | S | S |
| → Air conditioning Air conditioning, manual control | S | S | S | – |
| Air conditioning, automatic climate control | – | – | – | S |
| Dust and pollen filter | S | S | S | S |
| → Cruise control | – | S | S | S |
| → Console Centre console with open storage compartment and 12 volt socket | S | S | S | S |
| → Cup holders Front (2) | S | S | S | S |
| Rear (1) | S | S | S | S |
| Bottle holders in front door pockets | S | S | S | S |
| → Floor mats Front and rear, carpet | A | A | A | S |
| Front and rear, rubber | A | A | A | A |
| → Grab handles Soft folding at roof frame (4) | S | S | S | S |
| → Headlights Halogen headlights with clear polycarbonate lens | S | – | – | – |
| Halogen twin headlights with clear polycarbonate lens | – | S | S | S |
| Daytime driving lights, integrated in main headlight | S | S | S | S |
| Bi-xenon headlights for high and low beam with static cornering lights, LED daytime driving lights, LED rear number plate light, automatic self levelling, headlight cleaning system and low washer fluid warning | – | – | – | O |
| Headlight-on warning buzzer | S | S | S | S |
| Internal headlight range adjustment | S | S | S | S |
| Combined headlight and fog light switch | S | S | S | S |

Specifications

| Comfort and Convenience (Continued) | Trendline | 77TSI Comfortline | 66TDI Comfortline | GTI |
|-------------------------------------------------------------------------------------------------------------------------------------------------------------------------------------------------------------------------------------------------------------------------------------------------------------------------------------------|-----------|-------------------|-------------------|-----|
| → In car entertainment and technology AM/FM security coded radio (RCD310) with MP3 compatible CD player | S | S | S | – |
| AM/FM security coded radio (RCD510) with 6½" touch screen display, MP3 compatible SD card slot and 6 disc CD changer, in dash | – | – | – | S |
| Audio controls mounted on steering wheel | – | S | S | S |
| Auxiliary input audio socket in front centre console | S | S | S | S |
| Bluetooth® phone connectivity via integrated touch adapter, with phone book display and voice control Please note: iPhone 5 and iOS 6 compatibility is not available | S | S | S | S |
| Speakers, front (4) and rear (2) | S | S | S | S |
| Roof mounted antenna | S | S | S | S |
| Satellite navigation system (RNS510) High-resolution 6½" touch screen display in 16:9 format, 2D, topographical and 3D (bird's eye) map views, voice control for navigation and radio functions, integrated 30 GB hard drive for storing music and navigation data, SD card slot and single DVD drive for the playback of audio CD/MP3 | A | A | A | A |
| Media Device Interface (MDI), fitted in the glove compartment and supplied with USB connection cable | S | S | S | S |
| Media Device Interface (MDI) connection cables for iPod®, mini USB and auxiliary input. Please note: iPhone 5 compatibility is not yet available. | A | A | A | A |
| → Instrumentation Speedometer and tachometer, electronic odometer and tripmeter, service interval and outside temperature display, digital clock, low fuel warning light and white adjustable illumination | S | S | S | S |
| Digital fuel level indicator and high coolant temperature warning light | S | S | S | – |
| Fuel and coolant temperature gauges | – | – | – | S |
| → Interior highlights Aluminium finish to accelerator and brake pedals | – | – | – | S |
| Aluminium finish door sill inlays with GTI logo | – | – | – | S |
| Black gloss finish to dashboard surrounding audio, air conditioning controls, air vents and headlight switch | – | – | – | S |
| Chrome highlights for parking brake lever knob, steering wheel, air vents, instruments, air conditioning and light switch surrounds | – | S | S | S |
| Door sill scuff plates | A | A | A | A |
| Gearshift knob in leather | – | S | S | S |
| Stainless steel pedal set (for manual transmission) | A | A | A | – |
| → Interior lighting Interior light with time delay | S | S | S | S |
| Passenger reading lights, front (2) and rear (1) | – | S | S | S |
| → Luggage compartment Cargo organiser, luggage area tub storage with internal dividers and lid | A | A | A | A |
| Load restraining hooks | S | S | S | S |
| Luggage compartment light | S | S | S | S |
| Luggage compartment protection: moulded foam, rubber or plastic tub | A | A | A | A |
| Luggage net | A | A | A | A |
| Variable luggage compartment floor level | S | S | S | – |
| → Mirrors Automatic dimming interior rear-view mirror | – | – | – | S |
| Electrically heated and adjustable exterior mirrors | S | S | S | S |
| LED turn indicators integrated in exterior mirrors | S | S | S | S |

Specifications

| Comfort and Convenience (Continued) | Trendline | 77TSI Comfortline | 66TDI Comfortline | GTI |
|---------------------------------------------------------------------------------------------------------------------------------------------------------------|-----------|-------------------|-------------------|-----|
| → Parking distance sensors, rear | A | A | A | A |
| → Power steering Electro-hydraulic, vehicle speed and steering input sensitive | S | S | S | S |
| → Seating | | | | |
| Comfort front seats | – | S | S | – |
| Top sports seats with additional side bolstering | – | – | – | S |
| Easy entry front seat backrest release function (3 Door) | – | – | – | S |
| Height adjustment for driver's seat | S | S | S | S |
| Height adjustment for front passenger's seat | – | S | S | S |
| Split folding rear seat backrest and seat base (60/40) | S | S | S | S |
| → Steering wheel | | | | |
| 3 spoke leather rimmed multi-function steering wheel | – | S | S | – |
| 3 spoke leather rimmed flat bottomed sports steering wheel with brushed aluminium insert and decorative stitching | – | – | – | S |
| Audio controls | – | S | S | S |
| Multi-Function Display controls | – | – | – | S |
| Gearshift paddles | – | – | – | S |
| Height and reach adjustable | S | S | S | S |
| → Storage | | | | |
| Trays (open) in centre console (2) | S | S | S | S |
| Front seat back storage pockets | – | S | S | S |
| Storage drawers under front seats | – | – | – | S |
| Chillable glove box | S | S | S | S |
| Front door pockets | S | S | S | S |
| → Sunroof | | | | |
| Panoramic glass sunroof, electrically slide and tilt adjustable, integrated wind deflector and sunblind | – | O | O | O |
| → Sun visors | | | | |
| Driver and front passenger | S | S | S | S |
| → Transmission | | | | |
| Gearshift recommendation indicator (for manual transmission) | S | S | – | – |
| 5 speed manual transmission | S | – | – | – |
| 6 speed manual transmission | – | S | – | – |
| 7 speed Direct Shift Gearbox (DSG) with Tiptronic function and Sport mode | O | O | S | S |
| → Trip computer | | | | |
| Multi-Function Display (MFD) – trip time, trip length, average and current speed, speed warning, average and current fuel consumption and distance till empty | – | S | S | S |
| Audio and MFD settings menus in addition to MFD functionality | – | – | – | S |
| → Upholstery | | | | |
| Cloth | S | – | – | – |
| Comfort cloth | – | S | S | – |
| 'Jacky' sports cloth with decorative stitching | – | – | – | S |
| Headlining in black | – | – | – | S |

Specifications

| Comfort and Convenience (Continued) | Trendline | 77TSI Comfortline | 66TDI Comfortline | GTI |
|-------------------------------------------------------------------------------------------------------------------------------------------------------------------------------------------------------------------------------------------|-----------|-------------------|-------------------|-----|
| → Upholstery Alcantara/leatherette combination seat upholstery with individually heated front sports seats and carpet floor mats, front and rear. The GTI top sport seats are replaced by sports seats with this upholstery option. | – | – | – | O |
| → Vanity mirrors | | | | |
| Driver's and passenger's side vanity mirrors | S | S | S | S |
| Illuminated on driver's and passenger's side | – | S | S | S |
| → Windows | | | | |
| Power front and rear (5 Door), with roll-back function and one-touch up-down | S | S | S | S |
| Remote operated convenience close and open feature | S | S | S | S |
| Sunblinds for rear side and rear window | A | A | A | A |
| → Wipers | | | | |
| 2 speed with wash/wipe and intermittent wipe with 4 position delay | S | S | S | S |
| Rain sensor | – | – | – | S |
| Rear window with wash/wipe and intermittent wipe | S | S | S | S |
| → 12V accessory socket in centre console | S | S | S | S |
| Optional Packages | | | | |
| → Comfort package | | | | |
| Automatic climate control air conditioning | – | O | O | S |
| Automatically dimming interior rear-view mirror | | | | |
| Low tyre pressure indicator | | | | |
| Rain sensing windscreen wipers | | | | |
| → Sports package | | | | |
| Alloy Wheels (Boavista) 17x7" with 215/40 R17 tyres (4) | | | | |
| Dark tinted rear side window and rear window glass, 65% light absorbing | – | O | O | – |
| Front fog lights with static cornering function, mounted in lower bumper | | | | |
| Low tyre pressure indicator | | | | |
| Lowered sports suspension | | | | |
| The spare wheel/tyre is speed restricted in combination with the Sport package | | | | |

Technical Specifications

| | Trendline | | 77TSI Comfortline | | 66TDI Comfortline | | GTI | |
|---------------------------------|------------------------------------------------------------------|------|-------------------------------------------------|-----|-------------------------------------------------|-----|-------------------------------------------------------|--|
| → Engine | 1.4 Litre | | 1.2 Litre | | 1.6 Litre | | 1.4 Litre | |
| Type | 4 cylinder inline petrol | | 4 cylinder inline direct injection turbo petrol | | 4 cylinder inline direct injection turbo diesel | | 4 cylinder inline Twincharger direct injection petrol | |
| Installation | Front transverse | | Front transverse | | Front transverse | | Front transverse | |
| Cubic capacity, litres/cc | 1.4 / 1390 | | 1.2 / 1197 | | 1.6 / 1598 | | 1.4 / 1390 | |
| Bore/stroke, mm | 76.5 / 75.6 | | 71.0/75.6 | | 79.5/80.5 | | 76.5 / 75.6 | |
| Max power, kW @ rpm | 63 @ 5000 | | 77@ 5000 | | 66 @ 4200 | | 132 @ 6200 | |
| Max torque, Nm @ rpm | 132 @ 3800 | | 175 @ 1550-4100 | | 230 @ 1500-2500 | | 250 @ 2000-4500 | |
| Compression ratio | 10.5:1 | | 10:1 | | 16.5:1 | | 10:1 | |
| Fuel system | Magneti Marelli | | Bosch Motronic | | Simos common rail | | Bosch Motronic | |
| Ignition system | Electronic | | Electronic | | Compression | | Electronic | |
| Exhaust emission control | Exhaust gas recirculation, catalytic converter and lambda probes | | | | | | | |
| Emission level [^] | Euro 5 | | Euro 5 | | Euro 5 | | Euro 5 | |
| Fuel type (Recommended) | Premium unleaded 95 RON | | Premium unleaded 95 RON | | Diesel 51CZ | | Premium unleaded 98 RON | |
| Fuel tank capacity, litres | 45 | | 45 | | 45 | | 45 | |
| → Transmission | 5 speed manual 7 speed DSG | | 6 speed manual 7 speed DSG | | 7 speed DSG | | 7 speed DSG | |
| Driven wheels | Front wheel drive | | Front wheel drive | | Front wheel drive | | Front wheel drive | |
| → Performance [#] | | | | | | | | |
| 0-100km/h, seconds | 12.1 | 11.9 | 9.7 | 9.7 | 11.5 | 6.9 | | |
| → Fuel consumption [*] | | | | | | | | |
| Combined, L/100km | 6.1 | 6.0 | 5.5 | 5.5 | 4.6 | 6.1 | | |
| Urban, L/100km | 8.2 | 7.9 | 7.0 | 7.2 | 5.5 | 7.7 | | |
| Extra Urban, L/100km | 4.9 | 4.9 | 4.7 | 4.6 | 4.0 | 5.3 | | |
| CO ² emission, g/km | 142 | 140 | 128 | 128 | 121 | 142 | | |

[^] Emission level according to European Regulation (EC) No. 715/2007 and Regulation (EC) No. 692/2008.

[#] Please note figures are sourced from overseas data where equipment levels by model variant may vary.

^{*} Fuel consumption figures according to Australian Design Rule (ADR) 81/02.

The driving style, road and traffic conditions, environmental influences, fitment of accessories and vehicle condition can in practice lead to consumption figures which may differ from those calculated with these standards.

Technical Specifications

| | Trendline | | 77TSI Comfortline | | 66TDI Comfortline | | GTI | |
|----------------------------------------|---------------------------------------------------------------------------------------------------|------|-----------------------------------------------------------------------------------------------------------------|------|----------------------|------|-----------------------------------------------------------------------------------------------------|--|
| → Running Gear | | | | | | | | |
| Steering | Electro-hydraulic power assisted rack & pinion steering | | | | | | | |
| Turning circle, metres | 10.6 | | | | | | | |
| Suspension | Front axle | | Independent suspension, MacPherson struts and coil springs. Sports suspension lowered approximately 15mm (GTI). | | Rear axle | | Torsion beam axle, trailing arms, coil springs. Sports suspension lowered approximately 15mm (GTI). | |
| Brakes | Front | | Ventilated discs | | Discs | | Discs | |
| | Rear | | Drums | | Discs | | Discs | |
| → Brake systems | Anti-lock Braking System (ABS) with Electronic Brake-pressure Distribution (EBD) and Brake Assist | | | | | | | |
| → Weights | 5 Door Man | | 5 Door DSG | | 5 Door Man | | 5 Door DSG | |
| Tare Mass kg | 1033 | 1068 | 1048 | 1088 | 1140 | 1189 | 1189 | |
| Towing Capacity kg | Braked* [#] | | 1000 | | 1000 | | 1000 | |
| | Unbraked | | 530 | | 530 | | 530 | |
| Tow bar load limit kg | 50 | 50 | 50 | 50 | 50 | - | - | |
| → Exterior Dimensions | | | | | | | | |
| Overall length mm | 4064 | | | | | | | |
| Width mm | 1682 | | | | | | | |
| Height mm | 1500 | | | | | | | |
| Wheelbase mm | 2456 | | | | | | | |
| Track mm | Front | | 1464 | | Rear | | 1443 | |
| | Rear | | 1456 | | | | 1434 | |
| → Luggage Area Dimensions [#] | | | | | | | | |
| Luggage area volume L | (Rear seat upright) | | 280 | | (Rear seat folded) | | 882 | |
| Luggage area floor length, mm | (Rear seat upright) | | 699 | | (Rear seat folded) | | 633 | |
| Luggage area width, mm | (At widest point) | | 1371 | | (At narrowest point) | | 1341 | |
| | | | 962 | | | | 962 | |
| Luggage load height, mm | (To luggage cover) | | 499 | | (To roof lining) | | 351 | |
| | | | 820 | | | | 672 | |

^{*} With trailer brakes up to a gradient of 12%.

[#] Please note figures are sourced from overseas data where equipment levels by model variant may vary.

[≠] Please note Volkswagen Group Australia does not endorse or will not be held liable for any claim, loss or damage arising from the use or fitment of electronic trailer brakes.

Colours



→ Candy White



→ Ocean Blue*



→ Flash Red



→ Reflex Silver Metallic



→ Pepper Grey Metallic*



→ Deep Black Pearl Effect



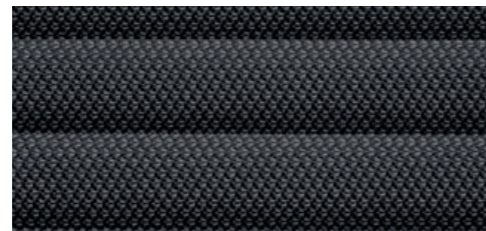
→ Shadow Blue Metallic†

Please note that Metallic and Pearl Effect paint are optional at extra cost. The print process does not allow for exact reproduction of the exterior or the upholstery colours. Please contact your Volkswagen Dealer for further information on colours and upholstery combinations.

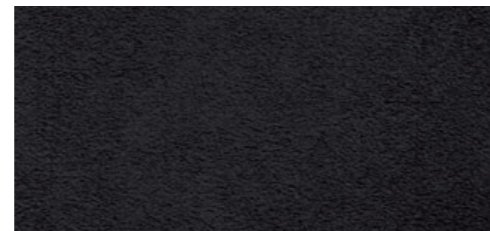
Upholstery



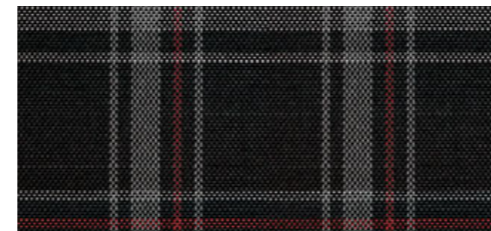
→ Black Cloth seat upholstery



● → Black Comfort Cloth seat upholstery ○



→ Black Alcantara / Leatherette seat upholstery



■ → Black / Red Jacky Cloth seat upholstery □

Polo Capped Price Servicing*

The Polo comes with peace of mind included, with Capped Price Servicing* now available at participating Volkswagen dealers.

Authorised Volkswagen Service Centres have factory trained technicians equipped with the very latest diagnostic equipment, specialist tooling and Volkswagen Genuine Parts.

They also undertake work in accordance to factory specified guidelines and maintenance schedules, so you can be confident that your Polo will be well taken care of.

*Capped price servicing is available at participating Volkswagen dealers on Polo 5 door manual and DSG models and Polo 3 door DSG models first sold by an authorised Volkswagen dealer on or after 1 January 2013. Capped price servicing applies to the first 6 standard scheduled services of your vehicle which are scheduled to occur at every 15,000 km/12 month interval (whichever occurs first). Exclusions and conditions apply. For details on pricing, items not included in the capped price and for full terms and conditions please see volkswagen.com.au. Volkswagen Group Australia reserves the right to at any time modify or discontinue the Capped Price Servicing program.



Glossary

Anti-lock Braking System (ABS)

When braking, wheel speed sensors measure the road wheel speed and should one or more wheels start to lock the ABS system reduces brake pressure to that wheel. This prevents the wheels from locking during heavy or emergency braking, enabling the vehicle to remain steerable.

Anti-Slip Regulation (ASR)

ASR is a switchable traction control system that prevents the driven wheels from spinning under acceleration by reducing engine torque. It is active at speeds above 40km/h.

Brake Assist

During emergency braking, Brake Assist aids the driver by increasing the brake pressure automatically to a level exceeding the locking limit. The ABS is thus quickly brought into the operating range, which enables maximum vehicle deceleration to be achieved.

Direct Shift Gearbox (DSG)

DSG is a manual gearbox in which the gearshifts are controlled electronically. What makes the DSG unique is that it has 2 separate gear sets operated by 2 clutches. The benefit of 2 gear sets and 2 clutches is that one gear set and clutch is engaged driving the vehicle with the second disengaged clutch having already pre-selected the next gear awaiting for power to be transferred.

As the next gear has already been pre-selected prior to power being applied, the gear change only takes 3-4 100ths of a second. There is virtually no interruption to power, traction or acceleration. The DSG also offers Tiptronic gear selection and sports mode.

Electronic Brake-pressure Distribution (EBD)

Electronic, more sophisticated means of regulating the ratio of front/rear brake pressure. Settings are varied according to driving and load conditions to ensure each wheel is braked to the optimum extent.

Electronic Differential Lock (EDL)

EDL improves driving and steering characteristics when accelerating on road surfaces where each wheel has a different degree of traction. The system operates automatically and is combined with the ABS system. Using the ABS wheel sensors, EDL monitors the speed of the individual driving wheels. When a difference in driving wheel speed is detected (i.e. when one wheel starts to spin due to differences in road surfaces, e.g. due to water or dirt) the system brakes the spinning wheel, transferring engine power to the wheel with the best traction. EDL is active in forward and reverse and operates up to 40km/h.

Electronic Stabilisation Program (ESP)

ABS, EDL and ASR traction control systems are integrated into the Electronic Stabilisation Program (ESP). In short, ESP helps ensure that the vehicle goes where you steer it even in extreme driving conditions. The ESP system constantly compares the actual movement of the vehicle with pre-determined values and should a situation arise where the vehicle starts to skid, ESP will apply the brakes to individual wheels and automatically adjust the engine's power output to correct the problem. ESP prevents the vehicle from losing control when trying to avoid an accident, for example. It also prevents spinning off on a curve due to either understeer or oversteer.

Extended Electronic Differential Lock (XDL)

XDL is an extension of the Electronic Differential Lock (EDL) function. When cornering, XDL responds to the load relief at the front wheel on the inside of a corner. The ESP hydraulics are used for the XDL to apply pressure to the wheel on the inside of the corner in order to prevent wheel spin. This improves traction and reduces the tendency to understeer. As a direct result of the one-sided and precise braking pressure, cornering is sportier and more accurate.

Fuel Saving Tips

We can all Think Blue.

At Volkswagen, we aim to produce the most fuel efficient, environmentally sustainable vehicles possible. The good news is – we can all do our little bit to 'Think Blue'. Below, we have summarised the best tips for how you can drive more responsibly and reduce fuel consumption even further. It's not just your wallet that will benefit from these tips, but the environment too. Its practical benefits go far beyond just saving money and reducing emissions. Here are nine tips on how to drive more efficiently.

Be aware and save fuel. Think Blue.



03. Just let it roll Use overrun fuel cutoff.

With the right driving techniques, you can really save. Whilst in gear, coast down hills or towards traffic lights to reduce feeding fuel to your engine.



04. Comfort high, fuel consumption low Use auxiliary equipment in moderation.

Check the equipment you're using – if you don't need it, consider turning it off. De-misters, sound systems and air conditioning all use energy.



05. Savings are in the air Check your tyre pressures.

Check your tyre pressures to cut fuel consumption. Under-inflated tyres force your car to burn more fuel. Tyres in good order will help you save fuel.



07. Well-oiled for impressive savings Use Volkswagen approved engine oils.

A well-lubricated engine produces less emissions especially when the weather is cold or the trip is short. Change your oil at regular intervals.



08. Keep it sleek Cut aerodynamic drag.

Remember to remove roof racks, bike racks or roof boxes off your car when they're not in use. Keep windows up and sunroofs closed to reduce drag.



09. Lightly does it Avoid unnecessary weight.

Every kilogram you load into your car takes energy to move – energy that will be supplied by burning fuel. The lighter you drive, the more you save.



**01. Take it easy and save
Drive the modern way and think ahead.**
Drive smoothly and anticipate hazards. Hard braking and acceleration, sudden lane changes and unpredictable behaviour is fuel-inefficient.



**02. Change up early and fill up later
Drive in the highest gear possible.**
Use a higher gear with a manual transmission. Low revs take far less energy. With an automatic, reduce acceleration and avoid a kick down.



**06. A warm engine – a cool way to save
Avoid short trips.**
Plan to minimise the number of trips you need to make. Frequent short trips mean higher fuel consumption as cold engines run less efficiently.

Owning a Volkswagen

Volkswagen New Vehicle Warranty

Every new Volkswagen passenger vehicle is covered by a 3-year unlimited kilometres manufacturer's warranty, which includes Volkswagen Assist (24hr roadside assistance). Every new Volkswagen passenger vehicle is also covered by a 3-year paintwork and 12-year anti-corrosion perforation warranty. In addition every new Volkswagen passenger vehicle has a 5 year/150,000km transmission warranty.

Volkswagen Assist – 24 Hour Roadside Assistance

As a valued customer, you can be assured that wherever you travel within Australia, you will have access to roadside assistance, 24 hours a day, 365 days a year. This is complimentary for the duration of the vehicle's original Volkswagen warranty period. You will receive help in the event of a breakdown or accident and if required, your vehicle will be mobilised or transported to an Authorised Volkswagen dealer.

As a Volkswagen owner you will also have access to the additional benefits of accommodation and car rental if your vehicle cannot be mobilised within 24 hours, when you are over 100kms away from home. Volkswagen Roadside Assist can also be renewed at the expiry of the original warranty, ensuring ongoing coverage for your vehicle.

Volkswagen New Vehicle Extended Warranty Insurance*

To give you added peace of mind and the assurance of added security, you have the option to extend the warranty period to suit your ownership cycle. If your Volkswagen is still covered by its New Vehicle Warranty, we can offer you a 12 months or 24 months/ unlimited kilometres extension on the original warranty period already existing with your Volkswagen manufacturers Warranty. You then have the assurance that your Volkswagen remains a Volkswagen. For further information regarding warranty and extending your vehicles warranty period, please consult your local Volkswagen dealer, refer to your owner's handbook or visit volkswagen.com.au.

* Volkswagen New Vehicle Extended Warranty Insurance product is provided by Allianz Australia Insurance Limited (Allianz) ABN 15 000 122 850, AFSL Licence No. 234708. In arranging this cover, Volkswagen Group Australia Pty Ltd, ABN 14 093 117 876 and the authorised dealers act as agents of Allianz and not as your agent. Limits apply to the benefits you can claim. For full terms and conditions of cover, please refer to the relevant Volkswagen New Vehicle Extended Warranty Insurance policy document, available to you from your Volkswagen authorised motor dealer.

Volkswagen Genuine Accessories®

Volkswagen Genuine Accessories® are designed for your vehicle and approved by Volkswagen, with particular regard to safety. The workmanship, dimensional accuracy and materials used in these parts comply with factory specifications. To ensure safety and reliability, Volkswagen recommends the use of Volkswagen Genuine Accessories®. Volkswagen Authorised Dealers offer a 3-years/ unlimited kilometres warranty on genuine accessories if fitted prior to vehicle purchase, or a 2-years/unlimited kilometres warranty if fitted after purchase.

Volkswagen Finance

Whether you are buying, borrowing or leasing, Volkswagen Finance will certainly make you think differently about financing and insuring your new Volkswagen. Committed to meeting the needs of Volkswagen drivers across Australia, we offer a range of leasing, financing and insurance products, each with distinct advantages depending on your specific circumstances. Our packages are designed to suit your individual requirements and budgeting needs with fast approval times.

Speak to your participating local Volkswagen Dealer today for the best financial solution and ultimate insurance protection for your vehicle or visit volkswagenfinance.com.au.

VOLKSWAGEN FINANCE



Think Blue. Creating a sustainable future together

Volkswagen is committed to sustainability now and in the future, for us this means taking responsibility for the environment by getting involved in initiatives that contribute to a sustainable future through our products and behaviour.

We call this way of thinking, Think Blue. Volkswagen aims to become the leading automotive manufacturer for the environment and economy, making efficient and sustainable vehicles available to everyone. We want to inspire and motivate people to get involved in ecological sustainability, on the road and everywhere else.





Volkswagen Group Australia Pty Ltd
24 Muir Road Chullora NSW 2190
ABN 14 093 117 876

Printed in Australia

April 2013

Publication: **VGAPOLMY135**



Volkswagen is distributed by Volkswagen Group Australia Pty Ltd, 24 Muir Road, Chullora, NSW 2190, ABN 14 093 117 876. Specifications are as planned at January 2013, for Model Year 2013 and are subject to change without notice or obligation. All information in this specification sheet is correct at the time of publication, however variations may occur from time to time and Volkswagen, in so far as it is permitted by law to do so, shall not be liable in any way as a result of any reliance by any person on anything contained in this specification sheet. Authorised Volkswagen dealers will provide up-to-date information on model application, design feature, prices and availability on request.

Volkswagen Insurance & Volkswagen Extended Warranty are provided by Allianz Australia Insurance Limited (Allianz), AFS Licence No. 234708, ABN 15 000 122 580. In arranging this insurance Volkswagen Financial Services Australia Pty Limited, ABN 20 097 071 460 & Volkswagen Group Australia Pty Ltd, ABN 14 093 117 896 and the authorised dealers act as agents of Allianz and not as your agent. Volkswagen Finance is a trading name of Volkswagen Financial Services Australia Pty Limited. Locked Bag 6252, Regents Park NSW 2143. Tel: 02 9695 6311.