



Das Auto.

Polo



Content overview

- 3 Introduction
- 5 66TSI Trendline
- 5 81TSI Comfortline
- 9 Exterior
- 11 Interior
- 13 Technology
- 15 Safety
- 17 Optional Packages
- 19 Volkswagen Genuine Accessories
- 21 Colours & Upholstery
- 23 Features & Specifications
- 31 Glossary
- 32 Corporate Sustainability – Think Blue.
- 33 Fuel Saving Tips
- 34 Owning a Volkswagen
- 34 Polo Capped Price Servicing





Introduction

Why run with the pack when you can lead from the front? The stylish new Polo powers ahead to keep up with your busy lifestyle. It's fuelled with confidence, encapsulating the very best small car credentials. You'll be inspired by its dynamic lines and exquisite detailing. You'll be moved by the turbocharged performance and efficiency of its TSI petrol engines. And you'll be captivated by the benchmark quality and comfort of its versatile cabin.

Yes, the new Polo opens up big possibilities. BlueMotion Technology combines with the latest transmissions to help you go further on much less fuel. Innovative infotainment options keep you in the loop while you're behind the wheel. And superior construction and safety systems contribute to a maximum five-star ANCAP rating, so you can tackle any journey with complete confidence. All of which makes the Polo a trusty companion whether you're out on the town or heading out of town.

You decide the character of your Polo by choosing between the well-appointed 66TSI Trendline (available with a 5-speed manual or optional 7-speed DSG transmission) or the sporty 81TSI Comfortline (with 6-speed manual or optional 7-speed DSG transmission). Driving packages can be selected that further reflect your personality.

Of course, every Polo promises to excite and entertain with standard features that include a Composition Colour audio system, Bluetooth® connectivity, USB interface, daytime driving lights, power windows, electro-mechanical power steering and Hill Start Assist (HSA).

The Polo is, quite simply, the fun all-rounder that outperforms. It offers all the features you need and more, plus Volkswagen value you can't ignore.



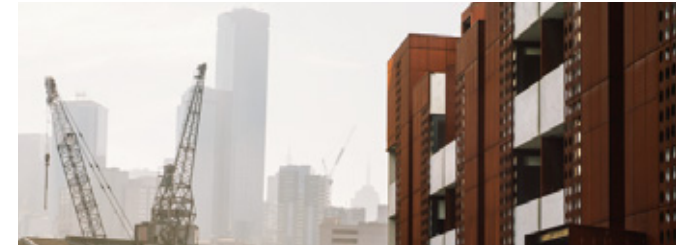


Comfortline model shown with optional Driving Comfort package and optional Sport package

66TSI Trendline

The dynamic new standard





Unique style speaks for itself. The Polo doesn't join the crowd, it pulls a crowd with its crisp, contemporary lines and class-leading technology.

The Trendline equipment range delivers all the great Polo attributes in one. The 1.2-litre turbocharged TSI engine delivers 66kW of power and 160Nm of torque. Power is delivered to the road via a slick 5-speed manual gearbox or the optional 7-speed Direct Shift Gearbox (DSG). BlueMotion Technology includes a Start/Stop system and brake energy recuperation, which combine with electro-mechanical power steering to help the Polo achieve outstanding fuel economy on every trip.

The innovative technology extends to the exciting new cabin with USB interface and Bluetooth® connectivity as standard. Cool cabin technologies bring the console to life, starting with the Composition Colour audio system that awaits your playlist. The high-quality system is supported by a 5-inch colour touchscreen, 6 audio speakers, and SD card and USB interfaces. And Bluetooth® phone connectivity with audio streaming gives you hands-free phonecall control.

The Polo's standard appointments take the work out of driving. Air-conditioning, cruise control, powered and heated door mirrors, and power windows (front and rear) make your drive as much pleasurable as practical. And there are loads of additional conveniences, such as twin cup holders, a chillable glove box, centre console storage for your essentials and remote central locking.

The Polo 66TSI Trendline makes a bold statement inside and out. The exterior commands attention with its black radiator grille and chrome insert, colour-keyed bumpers front and back, and 15-inch wheels. Headlights meld seamlessly with the grille, and daytime driving lights flank the lower air intake. Body-colour bumpers, door mirrors and door handles add to the polished, confident look. Inside you'll find gloss black highlights for the instrument panel, switches, air vent and gearshift surrounds. And adding to the five-door practicality is a variable floor level for the luggage compartment and an efficient 40/60 split folding rear seat.

A full suite of intelligent safety systems includes 6 airbags, Electronic Stabilisation Program (ESP), Anti-Slip Regulation (ASR) traction control and multi-collision brake, which helps prevent a secondary impact after an initial collision. Daytime driving lights keep you visible on the road at all times and Hill Start Assist (HSA) keeps you from rolling backwards from a standing start.

For extra peace of mind, the Polo has a maximum 5-star ANCAP safety rating so you can tackle journeys with utmost confidence.



This vehicle has been awarded a maximum 5 Star Rating by ANCAP.

81TSI Comfortline

The centre of attention





With its confident, sporty character the Polo 81TSI Comfortline reflects your energy and sense of style to leave a lasting impression.

Extensively equipped, the Polo 81TSI Comfortline adds more practical and appealing features and an enhanced appearance. At its heart is a powerfully efficient 1.2-litre TSI engine developing 81kW and 175Nm of torque to deliver outstanding economy. Spriting you to your destination is a turbocharged TSI engine that delivers surges of power just when you need it, and with the convenience of a 6-speed manual or optional 7-speed DSG transmission to choose from. BlueMotion technologies help achieve impressive fuel economy of 4.9L/100km for the manual and 4.8L/100km for the DSG.

You'll be the envy of your friends when you show them the infotainment options crammed into your Polo. Among the ultra-cool technology at your disposal is a high-quality Composition Colour touch screen audio system with CD player, FM/AM radio, SD card and USB interfaces, and an auxiliary input audio socket. You control it all via a 5-inch touchscreen display offering vivid colours and needle-sharp definition. Six audio speakers bring your music to life with outstanding clarity. And let's not forget the convenience of hands-free Bluetooth® phone connectivity and audio streaming.

The athletic lines, chrome accents and stylish Estrada 15-inch alloy wheels mean you can't help but get noticed. It sits confidently, with chrome strips that highlight both the radiator grille and lower air intake surround. You'll notice another layer of refinement when you settle into the height-adjustable front seats with full comfort cloth upholstery and grip the leather multi-function steering wheel. A multi-function trip computer shows relevant data in the instrument cluster, such as current and average fuel consumption, average speed, driving range, journey distance, time and outside temperature. Additional comfort and convenience comes from a front centre armrest with storage box, illuminated vanity mirrors, and front and rear reading lights for an added touch of luxury.

Volkswagen's safety technologies are constantly evolving to provide you with utmost security and protection. The Polo has the latest traction control and braking control systems, including multi-collision brake, for maximum stability and stopping, plus the reassurance of 6 airbags. Efficient daytime driving lights and Hill Start Assist (HSA) round out the safety package.

And so you can customise the Polo 81TSI Comfortline to your exact tastes, Volkswagen offers optional Driving Comfort and Sport packages that are guaranteed to set you and your car apart from the rest.



This vehicle has been awarded a maximum 5 Star Rating by ANCAP.

Exterior

All style, all substance

The Polo's progressive lines reflect clear, elegant and sophisticated design. They have been refined, tweaked and enhanced over six generations, yet the basic architecture remains unmistakable. It all adds up to a familiar confidence with a fresh edge that emphasises an even more dynamic character.

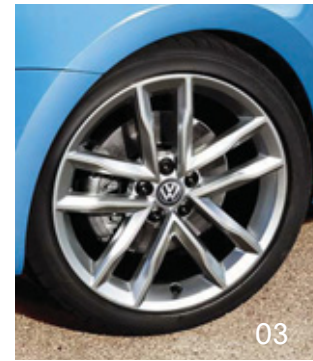
The Polo's profile is eye-catchingly sleek and its stance purposeful. Strong horizontal lines lower the visual centre of gravity, giving a solid stance on the

road that is supported by stylish new wheel designs. Broad front grilles and technical headlights are appealing features on a distinctive face, while characterful tail lights emphasise the car's full width. And the integrated roof spoiler, side skirts and streamlined side mirrors complete the stylish, aerodynamic bodywork.

But looks aren't everything, of course, which is why the Polo's eye-catching design is backed up by first-class workmanship and top-quality materials.



04



01, 02 & 03. Wheels

A range of individually designed wheels rounds out the Polo's sporty appearance. Standard 15-inch steel wheels feature robust, full wheel covers and 185/60 R15 tyres (01). Comfortline Estrada 15-inch alloy wheels (02) add a high-quality finish, while optional in the Sport Package are striking 17-inch Mirabeau alloy wheels with 215/40 R17 tyres (03).

04. Design

The new Polo leads from the front with its confident frontal design. It features dynamic bumper and headlight designs, an expressive radiator grille with chrome strip and a distinctive lower air intake flanked by daytime driving lights. Body-colour exterior mirrors and door handles complete a polished overall look.

Attractive new tail lights are an eye-catching highlight at the rear, with each unit combining tail, brake, reversing light and turn indicators. BlueMotion Technology badging adorns the tailgate and a new colour-keyed rear bumper design accentuates an exposed exhaust.

05. Daytime driving lights

Even during the day, other drivers can sometimes fail to see you. The Polo's daytime driving lights add an extra level of visibility. They leave you confident that if your car's sleek design doesn't catch other drivers' attention, your driving lights will.

Interior

Greater comfort, more control

You're going to spend a lot of time inside your car, so it's important that its interior is pleasing to the eye, comforting to the body and soothing to the nerves. It also needs to present all your car's controls in a logical, easy-to-understand and easy-to-operate fashion. Welcome to the Polo's functional, driver-oriented layout with quick access to every major control.

Indeed, the Polo's spacious interior has been carefully crafted to adhere to every rule of ergonomics while also setting standards in terms of workmanship and material quality. From the supportive seats to the smallest details of trim and finish, everything is there for one reason and one reason only: your comfort and convenience.





01. Composition Colour touchscreen audio system

Enjoy crystal-clear audio every time you drive with the Polo's Composition Colour audio system, complete with 6 speakers front and rear. Controlled via a full-colour 5-inch touchscreen that can be personalised to suit your tastes, it includes a CD player, SD card interface and an auxiliary input audio socket, making it as versatile and practical an audio system as you'll find anywhere.

02. ThinkBlue trainer



At the touch of a button the 'Think Blue' trainer takes personalisation to the next level. Operated via the nifty 5-inch touchscreen the system creates an ecological driving experience as it studies your everyday driving characteristics and displays useful tips to help further reduce fuel consumption.

03. Bluetooth® phone connectivity

Communicating on the move is a breeze with Bluetooth® phone connectivity. Simply connect your Bluetooth®-enabled phone or media player to the Composition Colour audio system to make and receive calls, stream music, access your contact information and more. The easy-to-use touchscreen interface means it's never been this much fun to stay connected.

04. Storage (not pictured)

Numerous handy compartments highlight the terrific flexibility of the Polo cabin. Storage compartments are integrated into both front and rear door trims, there are two cup holders up front and there's a generous centre console compartment. The luggage compartment has a practical double floor for even more stowage space and security.

05. Split/folding rear seat backrest and seat base (40/60)

The rear seat has an asymmetrical 40/60 split and both sides can be folded down, making the virtually level load space fully configurable to your requirements.

Technology

Designed for drivers

Volkswagen's far-sighted technology solutions ensure your Polo is comfortable and fun to drive, and light on the hip pocket when it comes time to fill up. The Polo's sprightly TSI petrol engines feature turbocharging for effortless performance, and come with BlueMotion Technology such as automatic Start/Stop system and brake energy recuperation as standard. When combined with Volkswagen's lightweight design ethic, the result is exceptional power delivery and instant response – even at low engine speeds – and ultra-low fuel consumption and emissions.

The TSI engines are paired with impressive manual or DSG transmissions for smooth and refined progress, while steering response is enhanced by a new electro-mechanical steering system that offers greater ease of control. The Polo's impressive level of technology is matched by its stylish and clever interior, resulting in a car that exceeds expectations the moment driver and passengers set foot inside.



01 & 06



01. 1.2-litre turbocharged TSI engine

The 66TSI Trendline's engaging 1.2-litre turbocharged TSI engine pumps out 66kW of power and 160Nm of torque. This increases to 81kW and 175Nm in the 81TSI Comfortline model. Both engines develop peak torque from just 1400rpm for excellent driveability. And they are remarkably easy on the hip pocket with super-low fuel consumption of between 4.8 and 4.9L/100km.

02. 5- and 6-speed manual gearbox (not pictured)

The 5-speed manual gearbox has a smooth gear change, so you easily stay in the right engine speed range. The same naturally applies to the Comfortline's precise 6-speed manual gearbox.

03. 7-speed Direct Shift Gearbox (DSG) (optional)

The innovative DSG gearbox changes almost imperceptibly into the next gear in only 3- to 4-hundredths of a second. It does so automatically and with virtually no interruption to power flow or acceleration. Because it ensures optimum transmission of the engine power, DSG provides excellent fuel consumption and driving satisfaction.



04. Electro-mechanical power steering (not pictured)

Making its debut in the Polo is a new electro-mechanical steering system, known as column electric steering, which offers greater ease of control and benefits fuel economy. The compact system is integrated directly into the steering column and is distinguished by its agile responses and precise steering properties.

05. Hill Start Assist (HSA) (not pictured)

Hill Start Assist (HSA) holds the vehicle stationary for 1.5 seconds on hills with an incline greater than 5 per cent, when the foot brake is released, by temporarily locking the brake pressure. This intelligent feature provides a comfortable hill start and avoids the vehicle rolling back.

06. BlueMotion Technology

BlueMotion Technologies are a range of innovations and intelligent technologies designed to achieve greater fuel efficiency and emit less pollution, thus making the Polo kinder to the environment than ever before. All Polo models come with key BlueMotion Technologies such as engine Start/Stop system and brake energy recuperation.

Safety

Safety comes as standard, every time

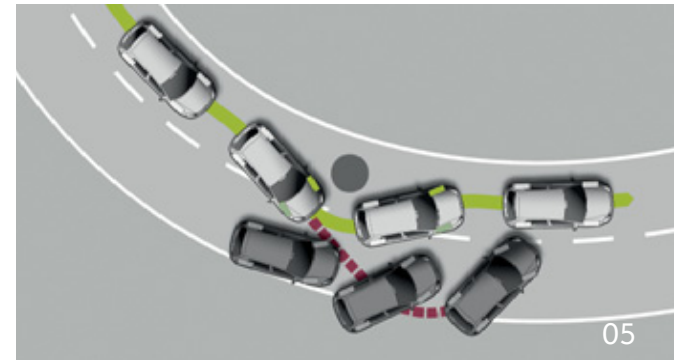
The Polo has been designed with your safety in mind from the outset. Keeping drivers and passengers safe has always been a key goal for Volkswagen's designers and engineers.

This is because Volkswagen combines two kinds of safety measures: active features to help you avoid accidents, such as traction control and braking control systems; and passive features to protect occupants from injury in case of a collision, like crumple zones, airbags and head restraints.

A valuable new inclusion is multi-collision brake, which ensures controlled braking of the vehicle after a collision, to reduce the risk of possible follow-on accidents.

It's all there in the Polo's design and engineering, and the end result is a car that gives you confidence in all conditions.





03

05

01. Airbags (not pictured)

Six airbags (twin front, side and curtain) are standard in the Polo's airbag system. Airbags combine with the seatbelts to help reduce the risk of severe head and chest injuries in collisions. When inflated, airbags cushion the head and upper body, and distribute the resulting loads over as large an area as possible.

02. Multi-collision brake (not pictured)

Multi-collision brake acts to mitigate a secondary accident by triggering automatic (emergency) braking once an initial impact has been detected. In doing so, it reduces the risk of possible follow-on accidents.

Multi-collision brake technology acts in concert with an array of other safety features in the Polo. With its range of active safety that help you avoid accidents, such as Anti-lock Braking System (ABS) and traction control, and passive features to protect occupants from injury in case of a collision, like crumple zones, airbags and head restraints, it should come as no surprise that the Polo has been awarded a maximum 5-star ANCAP safety rating.

03. 5-star ANCAP safety rating

Volkswagen stops at nothing to ensure that you and your passengers have the safest ride possible. With its 5-star safety rating, you can feel truly at ease on any journey knowing that the extensive safety equipment in every Polo will minimise the risk of harm. Not only that but Volkswagen continues to innovate, adapt and improve to bring you the very latest safety technology available. Confidence is yours when you drive a Polo.

04. Safety optimised front head restraints (not pictured)

By working in unison with your vehicle's seatbelts, your Polo's front safety optimised front head restraints are designed to reduce whiplash injury – ensuring optimal protection when you need it most.

05. Traction control (EDL, ASR, and ESP), Braking control (Brake Assist, ABS and EBD)

Traction control enhances directional stability, helping you maintain control of your vehicle in critical driving situations. The Polo's system is built around three distinct functions that improve grip, control wheel spin and automatically adjust engine power in slippery conditions. Braking control, meanwhile, intervenes in braking management with Anti-lock Braking System (ABS), Electronic Brake-pressure Distribution (EBD) and Brake Assist.

Optional Packages

Assert your personality

Striving for the perfect fit? A Polo that is tailor-made for you and your plans? Why not personalise your Polo Comfortline with a range of optional equipment that helps make your car uniquely yours.

We all know a car is a deeply personal thing and a few special touches – either functional or aesthetic – can better reflect your personality and lifestyle. That's why

numerous attractive and practical extras are available in two convenient and cost-effective equipment packages.

The Driving Comfort Package boosts interior comfort, driver assistance and ease of use, while the Sport Package enhances the Polo's dynamic handling and sporty appearance. Either package can be added to your Polo to help bring your personality to the fore.





01. Driving Comfort Package

No matter whether you're on a road trip or running an errand in town, you'll love the extra features offered as part of the Driving Comfort Package.

Highway driving is made easy with Adaptive Cruise Control (ACC), which helps you maintain a pre-set distance from the vehicle in front. Front Assist utilises the same radar sensor to shorten braking distances and reduce the risk of a rear-end collision. Driver Fatigue Detection system is invaluable when driving long distances – it measures driving inputs and recommends a rest stop if driver tiredness is detected. Around town, City Emergency Brake technology will intervene to help avoid a low-speed crash. And parking is made easy with a Rear View Camera, which features colour display and static guidance lines.

Making your drive that much more comfortable is an array of other conveniences such as rain-sensing wipers, automatic headlights, a low tyre pressure indicator and automatic climate control air-conditioning.

02. Sport Package

The Polo Sport Package is the best way to bring your Polo's dynamic performance and sporty character to the fore. A variety of eye-catching and effective additions will accentuate your Polo's bold and stylish design – and leave a lasting impressions on all who see it.

The Sport Package includes lowered sports suspension and striking 17-inch Mirabeau alloy wheels, each of which is monitored by a low tyre pressure indicator. Up front, the road ahead is illuminated by fog lights with static cornering lights for improved visibility. And dark-tinted rear side and rear window glass (65 per cent light-absorbing) offers extra protection from the sun's rays and adds to the Polo's cool and purposeful look.

What's more, you can combine all the great technologies in the Driving Comfort Package with the stylish additions offered by the Sport Package to give your Polo the best of both worlds.

Volkswagen Genuine Accessories

The finishing touches

Our comprehensive range of genuine accessories give you the freedom to customise the look and feel of your vehicle to reflect your own personality and individual sense of style. The product philosophy is simple – to deliver innovative technologies and premium design – right down to the finest detail. Each and every genuine accessory has been designed specifically with the Polo in mind and has been

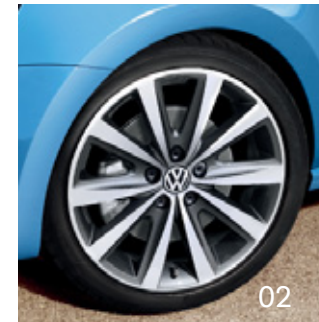
engineered and rigorously tested to ensure that it meets the same high standards of quality as the vehicle itself.

For more information or to experience the full range of genuine accessories designed to suit the Polo, visit your local Volkswagen Dealer.





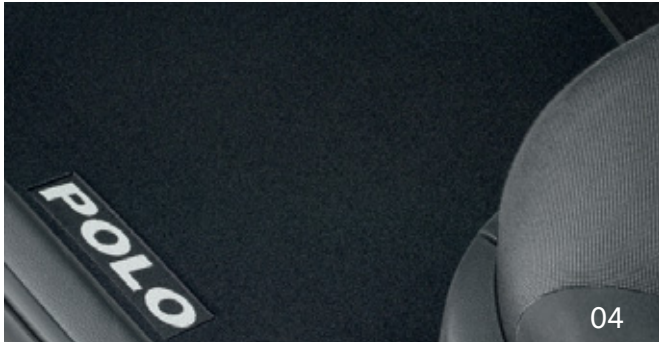
02



02



03



04



05



06



07



08



09

- 01. Roof edge spoiler
- 02. Alloy wheels in 15", 16" and 17" (various designs)
- 03. Slimline weather shields
- 04. Front and rear, premium textile mats with Polo insignia
- 05. Luggage compartment protection
- 06. Luggage compartment load liner with partitioning elements
- 07. Carbon look interior mirror
- 08. Roof Bars with surfboard holders
- 09. Exterior mirror caps, carbon fibre look

It is noted that the above accessories may have an effect on fuel efficiency. Items such as sports equipment and iPod® are for illustration purposes only and are not available for purchase from Volkswagen Group Australia or its dealers. For a full range of genuine accessories please refer to the model specific accessories tab at www.volkswagen.com.au
~Please refer to models' wheel placard for wheel size options.

Colours

Pure White



Sunset Red Metallic



Reflex Silver Metallic



Pepper Grey Metallic



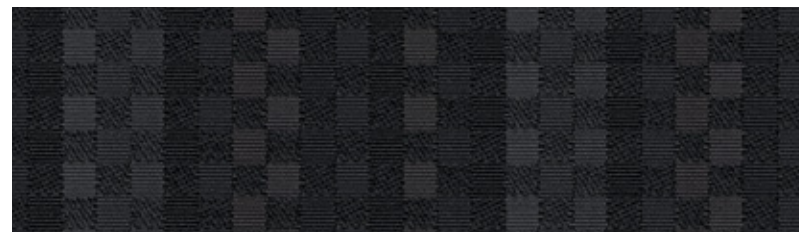
Please note that Metallic and Pearl Effect paint are optional at extra cost. The print process does not allow for exact reproduction of the exterior or the upholstery colours. Please contact your Volkswagen Dealer for further information on colours and upholstery combinations.

Deep Black Pearl Effect

Cornflower Blue



Upholstery



→ Black cloth seat upholstery



→ Black comfort cloth seat upholstery



Features & Specifications

Safety and Security	66TSI Trendline	81TSI Comfortline
→ Airbags		
Driver and front passenger airbags	S	S
Driver and front passenger side airbags	S	S
Curtain airbags, front and rear	S	S
→ Anti-theft		
Electronic engine immobiliser	S	S
Security coded audio system	S	S
Visible Vehicle Identification Number (VIN)	S	S
→ Body		
Door side impact protection	S	S
Fully galvanised with 12 year anti-corrosion perforation warranty	S	S
Rigid safety cell with front and rear crumple zones	S	S
→ Brakes		
Automatic flashing brake lights activated in emergency braking situation	S	S
Anti-lock Braking System (ABS)	S	S
Brake Assist	S	S
Electronic Brake-pressure Distribution (EBD)	S	S
Hill Start Assist (HSA)	S	S
Multi-collision brake	S	S
→ Child restraints		
Child seat top tether anchorage points, mounted on rear seat back (3)	S	S
ISOFIX child seat anchorage points, outer rear seats	S	S
→ First aid kit	A	A
→ Head restraints		
Front safety optimised head restraints, height adjustable	S	S
Rear adjustable and removable (3)	S	S
→ Lighting		
Daytime driving lights, halogen light integrated in lower bumper	S	S
Fog lamp, rear	S	S
→ Locking		
Remote central locking (separate release for luggage compartment)	S	S
2 stage unlocking (programmable)	S	S
One touch lock/unlock for driver	S	S
Child safety locks on rear doors	S	S
Fuel filler flap lock/unlock by remote, push to open	S	S
→ Seat belts		
Front height adjustable with pre-tensioners and belt force limiters	S	S
Visual and acoustic warning for driver and front seat passenger seat belts not fastened	S	S
3 point seat belts for all passengers	S	S

Features & Specifications

Safety and Security (Continued)	66TSI Trendline	81TSI Comfortline
→ Traction control		
Electronic Differential Lock (EDL)	S	S
Anti-Slip Regulation (ASR)	S	S
Electronic Stabilisation Program (ESP)	S	S
Exterior Equipment/Styling		
→ Body enhancements		
Body coloured bumper bars, door handles and exterior mirrors	S	S
Exposed exhaust tail pipe	S	S
Chrome trim for exhaust tail pipe	–	A
Exterior mirror caps, carbon fibre look	A	A
Lower air intake and headlights with highlight in chrome	–	S
Radiator grille highlight in chrome	S	S
Rear tailgate trim, chrome	A	A
Rear roof edge spoiler	A	A
→ Paint		
Metallic/Pearl Effect paint	O	O
→ Protection		
Bonnet protector	A	A
Headlight protectors	A	A
Loading sill guard in stainless steel look	A	A
Loading sill protection, transparent film	A	A
Mudflaps	A	A
Slimline weather shields	A	A
→ Roof		
Roof bars	A	A
Bicycle, kayak, ski, surfboard and snowboard holders	A	A
Luggage box range – 340, 460 and 300 to 500 litre volume expandable Urban loader version	A	A
→ Tinted glass		
Heat insulating tinted glass	S	S
→ Wheels		
Steel wheels 15x6" with full wheel trims and 185/60 R15 tyres	S	–
Alloy wheels (Estrada) 15x6" with 185/60 R15 tyres	–	S
Alloy wheels (various designs) 15", 16" and 17" Please consult your Volkswagen Dealer for correct wheel and tyre fitment by model	A	A
Anti-theft wheel bolts	A	S
Spare wheel, full size steel	S	S

Features & Specifications

Comfort and Convenience	66TSI Trendline	81TSI Comfortline
→ Armrest Front centre armrest with storage compartment, height adjustable	–	S
→ Air conditioning Air conditioning, manual control Dust and pollen filter	S S	S S
→ Console Centre console with open storage compartment and 12 volt socket	S	S
→ Cruise control	S	S
→ Cup holders Front (2) Rear (1) Bottle holders in front door pockets Waste container designed for the cup holder, white	S S S A	S S S A
→ Floor mats Front and rear, premium textile mats with Polo insignia Front and rear, rubber mats with Polo insignia	A A	A A
→ Grab handles Soft folding at roof frame (4)	S	S
→ Headlights Halogen twin headlights with clear polycarbonate lens Internal headlight range adjustment Combined headlight and fog light switch	S S S	S S S
→ In car entertainment and technology Composition Colour audio system 5.0" colour touch screen display, AM/FM radio, CD player, auxiliary input audio socket and SD card slot compatible with MP3 and WMA music files, car menu, convenience and service settings, security coded Think Blue trainer Audio, telephone*, cruise control and Multi-Function Display controls mounted on steering wheel Bluetooth® telephone connectivity and audio streaming with contacts display, operation via touch screen audio unit Roof mounted antenna Sound system, 5-channel amplifier with integrated digital sound processor and powerful subwoofer, 480W Speakers, front (4) and rear (2) USB audio socket in front centre console USB charge cables, adaptor cables supporting connection to Apple lightning, Apple 30 pin and mini USB	S – – S S A S S S A	S S S S S S S S A

* For Polo 81TSI Comfortline models not equipped with the optional driving comfort package. The enhanced functionality of the Multi-Function Display (MFD Plus) (vehicle status, audio, and telephone menus), telephone operation via the steering wheel and the inclusion of fuel and coolant temperature gauges (replacing digital displays) are only available for vehicles produced from August 2014. Please be aware that voice activation is not available. Please consult your authorised Volkswagen Dealer who can provide up-to-date information on vehicle production and availability on request.

Features & Specifications

Comfort and Convenience (Continued)	66TSI Trendline	81TSI Comfortline
→ Instrumentation Speedometer and tachometer, electronic odometer and tripmeter, start/stop system status and ambient temperature display, digital clock, low fuel warning light and white adjustable illumination	S	S
Digital fuel level indicator and high coolant temperature warning light	S	–
Fuel and coolant temperature gauges*	–	S
→ Interior highlights Black gloss finish to dashboard surrounding audio, air conditioning controls and air vents Chrome highlights for parking brake lever knob, steering wheel, air vents, instruments, door trim, air conditioning and light switches Gearshift knob and handbrake lever handle in leather Carbon look interior mirror	S – – A	– S S A
→ Interior lighting Interior light with time delay Passenger reading lights, front (2) Passenger reading lights, rear (1)	S S –	S S S
→ Luggage compartment Load restraining hooks Luggage compartment load liner with partitioning elements Luggage compartment light Luggage compartment protection: moulded foam liner or durable plastic tray Luggage cover, removable Luggage net Shopping bag hooks Variable luggage compartment floor level	S A S A S A S S	S A S A S A S S
→ Mirrors Electrically heated and adjustable exterior mirrors Additional interior rear view mirror LED turn indicators integrated in exterior mirrors	S A S A	S A S A
→ Parking distance sensors, rear		
→ Power steering Electro-mechanical, vehicle speed and steering input sensitive	S	S
→ Seating Height adjustment for driver's seat Height adjustment for front passenger's seat Split folding rear seat backrest and seat base (40/60)	S – S	S S S

* For Polo 81TSI Comfortline models not equipped with the optional driving comfort package. The enhanced functionality of the Multi-Function Display (MFD Plus) (vehicle status, audio, and telephone menus), telephone operation via the steering wheel and the inclusion of fuel and coolant temperature gauges (replacing digital displays) are only available for vehicles produced from August 2014. Please be aware that voice activation is not available. Please consult your authorised Volkswagen Dealer who can provide up-to-date information on vehicle production and availability on request.

Features & Specifications

Comfort and Convenience (Continued)	66TSI Trendline	81TSI Comfortline
→ Steering wheel		
3 spoke flat bottomed steering wheel	S	S
Leather covered steering wheel with brushed aluminium insert	–	S
Audio, telephone*, cruise control and Multi-Function Display controls	–	S
Height and reach adjustable	S	S
→ Storage		
Trays (open) in centre console (2)	S	S
Front seat back storage pockets	–	S
Chillable glove box	S	S
Front door pockets	S	S
→ Sun visors		
Driver and front passenger	S	S
→ Transmission		
Gearshift recommendation indicator	S	S
5 speed manual transmission	S	–
6 speed manual transmission	–	S
7 speed Direct Shift Gearbox (DSG) with Tiptronic function and Sport mode	O	O
→ Trip computer		
Multi-Function Display (MFD Plus)* – trip time, trip length, average and current speed, speed warning, average and current fuel consumption, distance till empty, oil temperature, vehicle status, audio and telephone menus	–	S
→ Upholstery		
Cloth	S	–
Comfort cloth	–	S
→ Vanity mirrors		
Driver's and passenger's side vanity mirrors	S	S
Illuminated on driver's and passenger's side	–	S
→ Windows		
Power front and rear, with roll-back function and one-touch up-down	S	S
Remote operated convenience close and open feature	S	S
Sunblinds for rear side and rear window	A	A
→ Wipers		
2 speed with wash/wipe and intermittent wipe with 4 position delay	S	S
Rear window with wash/wipe and intermittent wipe	S	S
→ 12V accessory socket in centre console	S	S

* For Polo 81TSI Comfortline models not equipped with the optional driving comfort package. The enhanced functionality of the Multi-Function Display (MFD Plus) (vehicle status, audio, and telephone menus), telephone operation via the steering wheel and the inclusion of fuel and coolant temperature gauges (replacing digital displays) are only available for vehicles produced from August 2014. Please be aware that voice activation is not available. Please consult your authorised Volkswagen Dealer who can provide up-to-date information on vehicle production and availability on request.

Features & Specifications

Optional Packages	66TSI Trendline	81TSI Comfortline
<p>→ Driving Comfort Package</p> <ul style="list-style-type: none"> Adaptive Cruise Control (ACC) Automatic climate control air conditioning Automatically dimming interior rear-view mirror Coming/leaving home function Driver Fatigue Detection system Front Assist with City Emergency Brake (City EB) function Low light sensor with automatic headlight function Low tyre pressure indicator Rain sensing windscreen wipers Rear View Camera (RVC) with static guidance lines 	-	○
<p>→ Sport Package</p> <ul style="list-style-type: none"> Alloy Wheels (Mirabeau) 17x7" with 215/40 R17 tyres (4) Dark tinted rear side window and rear window glass, 65% light absorbing Front fog lights with static cornering function, mounted in lower bumper Low tyre pressure indicator Lowered sports suspension The spare wheel/tyre is speed restricted in combination with the Sport package 	-	○

Technical Specifications

	66TSI Trendline		81TSI Comfortline	
→ Engine	1.2 Litre BlueMotion Technology		1.2 Litre BlueMotion Technology	
Type	4 cylinder inline turbocharged direct injection petrol with engine Start/Stop system*		4 cylinder inline turbocharged direct injection petrol with engine Start/Stop system*	
Installation	Front transverse		Front transverse	
Cubic capacity, litres/cc	1197		1197	
Bore/stroke, mm	71.0 / 75.6		71.0 / 75.6	
Max power, kW @ rpm	66 @ 4400-5400		81 @ 4600-5600	
Max torque, Nm @ rpm	160 @ 1400-3500		175 @ 1400-4000	
Compression ratio	10.5:1		10.5:1	
Fuel system	Bosch Motronic		Bosch Motronic	
Ignition system	Electronic		Electronic	
Exhaust emission control	Exhaust gas recirculation, catalytic converter and lambda probes		Exhaust gas recirculation, catalytic converter and lambda probes	
Emission level [^]	EU5 [^]		EU5 [^]	
Fuel type (Recommended)	95		95	
→ Transmission	5 speed manual	7 speed DSG	6 speed manual	7 speed DSG
Driven wheels	Front wheel drive		Front wheel drive	
→ Performance [#]				
0-100km/h	10.8	10.8	9.3	9.3
→ Fuel consumption ^{**}				
Combined, L/100km	4.8	4.8	4.9	4.8
Urban, L/100km	6.1	5.9	6.2	5.9
Extra Urban, L/100km	4.1	4.2	4.1	4.2
CO ₂ emission, g/km	109	112	113	113
Fuel tank capacity, litres	45	45	45	45

[^] Emission level according to European Regulation (EC) No. 715/2007 and Regulation (EC) No. 692/2008

* The Start/Stop system is designed to reduce fuel consumption and CO₂ emissions. It achieves this by automatically switching off the engine while the vehicle is stationary and then starting it again automatically when the driver wants to drive off. There are certain operating conditions where the Start/Stop system is deactivated (e.g. during engine warm-up), please refer to the owner's manual for full operating information.

Please note figures are sourced from overseas data where equipment levels by model variant may vary.

** Fuel consumption figures according to Australian Design Rule (ADR) 81/02.

The driving style, road and traffic conditions, environmental influences, fitment of accessories and vehicle condition can in practice lead to consumption figures which may differ from those calculated with these standards.

Technical Specifications

		66TSI Trendline		81TSI Comfortline	
→ Running Gear					
Suspension	Front axle Rear axle	Independent suspension, MacPherson struts and coil springs Torsion beam axle, trailing arms, coil springs			
Steering		Electro-mechanical power assisted rack and pinion steering			
Brake systems		Anti-lock Braking System (ABS) with Electronic Brake-pressure Distribution (EBD), Brake Assist and Electronic Stabilisation Program (ESP). Brake energy recuperation			
Brakes	Front Rear	Ventilated discs Discs		Ventilated discs Discs	
Turning circle, metres		10.6		10.6	
→ Weights					
Tare vehicle weight, kg		5 Door		5 Door	
		Man	DSG	Man	DSG
		1052	1082	1121	1151
→ Exterior Dimensions					
Overall length, mm		3972		3972	
Width, mm		1682		1682	
Height, mm		1453		1453	
Wheelbase, mm		2470		2470	
Track, mm	Front Rear	1457^ 1450^		1457^ 1450^	
→ Luggage Area Dimensions#					
Luggage area volume, L	Rear seat upright Rear seat folded	280 952		280 952	
Luggage area floor length, mm	Rear seat upright Rear seat folded	699 1371		699 1371	
Luggage area width, mm	At narrowest point	942		942	
Luggage load height, mm	To luggage cover To roof lining	560 820		560 820	

Please note figures are sourced from overseas data where equipment levels by model variant may vary.

^ Track based on 185/60/R15 tyres.

Glossary

Adaptive Cruise Control (ACC)*

Adaptive Cruise Control (ACC) is an extension of the conventional cruise control system with advanced capabilities based on a radar sensor. When ACC is activated, the vehicle automatically brakes and accelerates to a speed and distance set by the driver.

If the Polo approaches a slower vehicle, the ACC brakes the car to the same speed and maintains the pre-selected distance. Even when a vehicle pulls into the same lane in front of you or slows, your vehicle is automatically decelerated to the pre-selected distance. If the vehicle ahead moves out of your lane, the Polo then accelerates up to the preset desired speed.

Deceleration of the vehicle may take place via intervention in the engine management system. If deceleration via engine torque is not sufficient, brake intervention takes place, braking the vehicle to a standstill if the traffic situation necessitates in vehicles equipped with a DSG transmission. In vehicles fitted with a manual transmission, the system is automatically deactivated at speeds below 30 km/h and the driver is prompted to take charge by visual and acoustic signals.

The distance to the vehicle in front can be pre-set in the car menu of the Composition Colour audio system and individually varied via the multi-function steering wheel.

The status of the ACC system can be viewed in driver assistance systems menu in the Multi-Function Display (MFD Plus).

Adaptive Cruise Control (ACC) cannot replace the driver's assertiveness. The driver is still legally responsible for the vehicle and must monitor the speed and distance in relation to other vehicles. The ACC system should not be used on winding roads or in adverse weather conditions such as heavy rain.

Anti-lock Braking System (ABS)

When braking, wheel speed sensors measure the road wheel speed and should one or more wheels start to lock the ABS system reduces brake pressure to that wheel. This prevents the wheels from locking during heavy or emergency braking, enabling the vehicle to remain steerable.

Anti-Slip Regulation (ASR)

ASR is a traction control system that prevents the driven wheels from spinning under acceleration by reducing engine torque. It is active at speeds above 40km/h.

Brake Assist

During emergency braking, Brake Assist aids the driver by increasing the brake pressure automatically to a level exceeding the locking limit. The ABS is thus quickly brought into the operating range, which enables maximum vehicle deceleration to be achieved.

Direct Shift Gearbox (DSG)

DSG is a manual gearbox in which the gearshifts are controlled electronically. What makes the DSG unique is that it has 2 separate gear sets operated by 2 clutches. The benefit of 2 gear sets and 2 clutches is that one gear set and clutch is engaged driving the vehicle with the second disengaged clutch having already pre-selected the next gear awaiting for power to be transferred. As the next gear has already been pre-selected prior to power being applied, the gear change only takes 3–4 100ths of a second. There is virtually no interruption to power, traction or acceleration. The DSG also offers Tiptronic gear selection and sports mode.

Electronic Brake-pressure Distribution (EBD)

Electronic, more sophisticated means of regulating the ratio of front/rear brake pressure. Settings are varied according to driving and load conditions to ensure each wheel is braked to the optimum extent.

Electronic Differential Lock (EDL)

EDL improves driving and steering characteristics when accelerating on road surfaces where each wheel has a different degree of traction. The system operates automatically and is combined with the ABS system. Using the ABS wheel sensors, EDL monitors the speed of the individual driving wheels. When a difference in driving wheel speed is detected (i.e. when one wheel starts to spin due to differences in road surfaces, e.g. due to water or dirt) the system brakes the spinning wheel, transferring engine power to the wheel with the best traction. EDL is active in forward and reverse and operates up to 40km/h.

Electronic Stabilisation Program (ESP)

ABS and ASR traction control systems are integrated into the Electronic Stabilisation Program (ESP). In short, ESP helps ensure that the vehicle goes where you steer it even in extreme driving conditions. The ESP system constantly compares the actual movement of the vehicle with pre-determined values and should a situation arise where the vehicle starts to skid, ESP will apply the brakes to individual wheels and automatically adjust the engine's power output to correct the problem. ESP prevents the vehicle from losing control when trying to avoid an accident, for example. It also reduces the effects of understeer or oversteer.

Glossary

Fatigue Detection*

The driver Fatigue Detection system automatically analyses the driving characteristics and if they indicate possible fatigue, recommends that the driver takes a break. The system continually evaluates steering wheel movements along with other signals in the vehicle on motorways and others roads at speeds in excess of 65km/h, and calculates a fatigue estimate. If fatigue is detected, the driver is warned by information in the Multi-function Display and an acoustic signal. The warning is repeated after 15 minutes if the driver has not taken a break.

Fatigue Detection cannot replace the driver's assertiveness. The driver is still legally responsible for the vehicle and therefore determining whether or not they are fit to drive. A driving time of 15 minutes is required in order to assess the driver correctly. The functionality of the system is restricted given a sporty driving style, winding roads and poor road surfaces.

Front Assist with City Emergency Brake (City EB) function*

The Front Assist ambient traffic monitoring system uses a radar sensor to detect critical distance situations and thus help to shorten the braking distance, reducing the risk of a rear-end collision.

The traffic ahead is monitored constantly by the radar at the front. If a vehicle is detected ahead of you in the lane, the distance and the speed relative to it are calculated. If the gap is closing too fast, Front Assist initially warns the driver by means of an audible as well as a visual signal. At the same time, the brake pads are brought into contact with the brake discs and the sensitivity of the Brake Assist is increased. This primes the braking system for a possible emergency stop. Furthermore, an automatic jolt of the brakes warns the driver of the danger. If the driver also fails to react to the warning jolt, Front Assist brakes automatically, helping to avoid a collision or reduce the severity of the accident.

The City Emergency Brake (City EB) function is a radar based emergency braking system designed to help a driver avoid a low-speed crash or to reduce its severity. At vehicle speeds below 30km/h, City EB monitors the area ahead of the car for vehicles which might present a threat of collision. If a collision is likely, City Emergency Braking first pre-charges the brakes and makes the emergency Brake Assist system more sensitive: if the driver should notice the risk, the car is ready to respond more quickly to their braking action. However, if the driver still takes no action and a collision becomes imminent, City Emergency Braking independently applies the brakes very hard. If the driver intervenes to try to avoid the accident, either by accelerating hard or by steering, City EB will deactivate and allow the driver to complete the avoidance manoeuvre.

Front Assist with City Emergency Brake (City EB) cannot replace the driver's assertiveness. The driver is still legally responsible for the vehicle and must monitor the speed and distance in relation to other vehicles.

*Part of the optional Driving Comfort package available for specific models.

Multi-collision brake

The multi-collision brake has been designed to provide effective assistance for the driver in the moments after an accident. Multi-collision brake triggers automatic controlled braking once an initial collision has been detected so as to reduce the intensity of further accidents after a collision and can help prevent follow-on collisions with oncoming traffic.

The triggering of the multi-collision brake is based on a collision being detected by the airbag sensors. The ESP control unit limits the deceleration of the vehicle by the multi-collision brake to a defined value and vehicle speed. The vehicle can still be controlled by the driver, even when automatic braking is taking place. The driver can interrupt the multi-collision braking at any time by accelerating or braking even more strongly.

Hill Start Assist (HSA)

Hill Start Assist (HSA) holds the vehicle when the foot brake is released by temporarily locking the brake pressure (for a maximum of 1.5 seconds) to provide comfortable starting-off without rolling back. Hill Start Assist (HSA) operates on inclines greater than 5% and is fitted in combination with manual transmissions and the Direct Shift Gearbox (DSG).

Think Blue.

Creating a sustainable future together

Volkswagen is committed to sustainability now and in the future, for us this means taking responsibility for the environment by getting involved in initiatives that contribute to a sustainable future through our products and behaviour. We call this way of thinking, Think Blue. Volkswagen aims to become the leading automotive manufacturer for the environment and economy, making efficient and sustainable vehicles available to everyone. We want to inspire and motivate people to get involved in ecological sustainability, on the road and everywhere else.

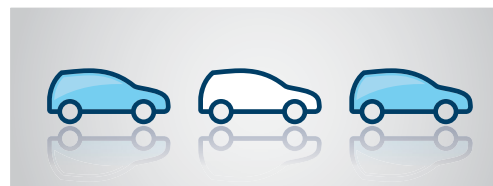


Fuel Saving Tips

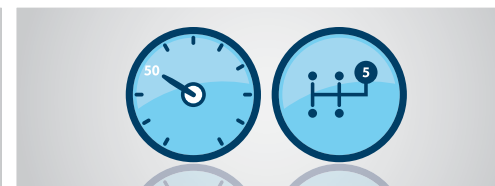
We can all Think Blue.

At Volkswagen, we aim to produce the most fuel efficient, environmentally sustainable vehicles possible. The good news is – we can all do our little bit to 'Think Blue'. Below, we have summarised the best tips for how you can drive more responsibly and reduce fuel consumption even further. It's not just your wallet that will benefit from these tips, but the environment too. Its practical benefits go far beyond just saving money and reducing emissions. Here are nine tips on how to drive more efficiently.

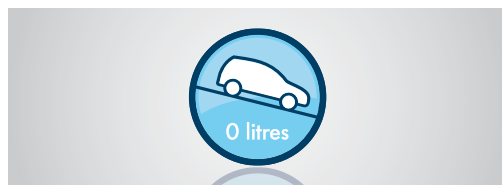
Be aware and save fuel. Think Blue.



01. Take it easy and save
Drive the modern way and think ahead.
Drive smoothly and anticipate hazards. Hard braking and acceleration, sudden lane changes and unpredictable behaviour is fuel-inefficient.



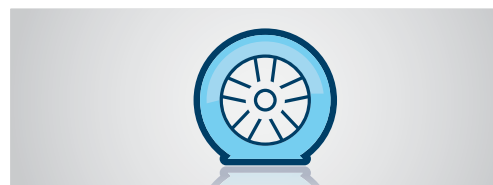
02. Change up early and fill up later
Drive in the highest gear possible.
Use a higher gear with a manual transmission. Low revs take far less energy. With an automatic, reduce acceleration and avoid a kick down.



03. Just let it roll
Use overrun fuel cutoff.
With the right driving techniques, you can really save. Whilst in gear, coast down hills or towards traffic lights to reduce feeding fuel to your engine.



04. Comfort high, fuel consumption low
Use auxiliary equipment in moderation.
Check the equipment you're using – if you don't need it, consider turning it off. De-misters, sound systems and air conditioning all use energy.



05. Savings are in the air
Check your tyre pressures.
Check your tyre pressures to cut fuel consumption. Under-inflated tyres force your car to burn more fuel. Tyres in good order will help you save fuel.



06. A warm engine – a cool way to save
Avoid short trips.
Plan to minimise the number of trips you need to make. Frequent short trips mean higher fuel consumption as cold engines run less efficiently.



07. Well-oiled for impressive savings
Use Volkswagen approved engine oils.
A well-lubricated engine produces less emissions especially when the weather is cold or the trip is short. Change your oil at regular intervals.



08. Keep it sleek
Cut aerodynamic drag.
Remember to remove roof racks, bike racks or roof boxes off your car when they're not in use. Keep windows up and sunroofs closed to reduce drag.



09. Lightly does it
Avoid unnecessary weight.
Every kilogram you load into your car takes energy to move – energy that will be supplied by burning fuel. The lighter you drive, the more you save.

Owning a Volkswagen

Volkswagen New Vehicle Warranty

Every new Volkswagen passenger vehicle is covered by a 3-year unlimited kilometres manufacturer's warranty, which includes Volkswagen Assist (24hr roadside assistance).

Every new Volkswagen passenger vehicle is also covered by a 3-year paintwork and 12-year anti-corrosion perforation warranty.

Volkswagen Assist – 24 Hour Roadside Assistance

As a valued customer, you can be assured that wherever you travel within Australia, you will have access to roadside assistance, 24 hours a day, 365 days a year. This is complimentary for the duration of the vehicle's original Volkswagen warranty period. You will receive help in the event of a breakdown or accident and if required, your vehicle will be mobilised or transported to an Authorised Volkswagen dealer.

As a Volkswagen owner you will also have access to the additional benefits of accommodation and car rental if your vehicle cannot be mobilised within 24 hours, when you are over 100kms away from home. Volkswagen Roadside Assist can also be renewed at the expiry of the original warranty, ensuring ongoing coverage for your vehicle.

Volkswagen New Vehicle Extended Warranty Insurance*

To give you added peace of mind and the assurance of added security, you have the option to extend the warranty period to suit your ownership cycle. If your Volkswagen is still covered by its New Vehicle Warranty, we can offer you a 12 months or 24 months/ unlimited kilometres extension on the original warranty period already existing with your Volkswagen manufacturers Warranty. You then have the assurance that your Volkswagen remains a Volkswagen. For further information regarding warranty and extending your vehicles warranty period, please consult your local Volkswagen dealer, refer to your owner's handbook or visit volkswagen.com.au.

* Volkswagen New Vehicle Extended Warranty Insurance product is provided by Allianz Australia Insurance Limited (Allianz) ABN 15 000 122 850, AFSL Licence No. 234708. In arranging this cover, Volkswagen Group Australia Pty Ltd, ABN 14 093 117 876 and the authorised dealers act as agents of Allianz and not as your agent. Limits apply to the benefits you can claim. For full terms and conditions of cover, please refer to the relevant Volkswagen New Vehicle Extended Warranty Insurance policy document, available to you from your Volkswagen authorised motor dealer.

Volkswagen Genuine Accessories®

Volkswagen Genuine Accessories® are designed for your vehicle and approved by Volkswagen, with particular regard to safety. The workmanship, dimensional accuracy and materials used in these parts comply with factory specifications. To ensure safety and reliability, Volkswagen recommends the use of Volkswagen Genuine Accessories®.

Volkswagen Authorised Dealers offer a 3-years/unlimited kilometres warranty on genuine accessories if fitted prior to vehicle purchase, or a 2-years/unlimited kilometres warranty if fitted after purchase.

VOLKSWAGEN FINANCE



Volkswagen Finance

Whether you are buying, borrowing or leasing, Volkswagen Finance will certainly make you think differently about financing and insuring your new Volkswagen. Committed to meeting the needs of Volkswagen drivers across Australia, we offer a range of leasing, financing and insurance products, each with distinct advantages depending on your specific circumstances. Our packages are designed to suit your individual requirements and budgeting needs with fast approval times.

Speak to your participating local Volkswagen Dealer today for the best financial solution and ultimate insurance protection for your vehicle or visit volkswagenfinance.com.au.

Polo Capped Price Servicing



The Polo comes with peace of mind included, with Capped Price Servicing* now available at participating Volkswagen dealers. Authorised Volkswagen Service Centres have factory trained technicians equipped with the very latest diagnostic equipment, specialist tooling and Volkswagen Genuine Parts. They also undertake work in accordance to factory specified guidelines and maintenance schedules, so you can be confident that your Polo will be well taken care of.

*Capped price servicing is available at participating Volkswagen dealers on Polo manual and DSG models first sold by an authorised Volkswagen dealer on or after 1 January 2013. Capped price servicing applies to the first 6 standard scheduled services of your vehicle which are scheduled to occur at every 15,000 km/12 month interval (whichever occurs first). Exclusions and conditions apply. For details on pricing, items not included in the capped price and for full terms and conditions please see volkswagen.com.au. Volkswagen Group Australia reserves the right to at any time modify or discontinue the Capped Price Servicing program.

Volkswagen Group Australia Pty Ltd
24 Muir Road Chullora NSW 2190
ABN 14 093 117 876

Printed in Australia
August 2014

Publication: **VGAPOLMY15**

Volkswagen is distributed by Volkswagen Group Australia Pty Ltd, Volkswagen Group Australia Pty Ltd, 24 Muir Road Chullora, NSW 2190. ABN 14 093 117 876. Specifications are as planned at July 2014, for Model Year 2015 and are subject to change without notice or obligation. All information in this specification sheet is correct at the time of publication, however variations may occur from time to time and Volkswagen, in so far as it is permitted by law to do so, shall not be liable in any way as a result of any reliance by any person on anything contained in this specification sheet. Authorised Volkswagen dealers will provide up-to-date information on model application, design feature, prices and availability on request.

Volkswagen Insurance and Volkswagen Extended Warranty are provided by Allianz Australia Insurance Limited (Allianz), AFS Licence No. 234708, ABN 15 000 122 580. In arranging this insurance Volkswagen Financial Services Australia Pty Limited, ABN 20 097 071 460 and Volkswagen Group Australia Pty Ltd, ABN 14 093 117 896 and the authorised dealers act as agents of Allianz and not as your agent. Volkswagen Finance is a trading name of Volkswagen Financial Services Australia Pty Limited. Locked Bag 6252, Regents Park NSW 2143. Tel: 02 9695 6311.