



Das Auto.

THE

UP!



Content overview

- 3 Introduction
- 5 Exterior
- 7 Interior
- 9 Maps + More Portable Infotainment Device (PID) option
- 11 Technology and Safety
- 13 Special Order Options
- 15 Volkswagen Genuine Accessories
- 17 Features & Specifications
- 24 Fuel Saving Tips
- 25 Colours and Upholstery
- 25 up! Capped Price Servicing
- 28 Glossary
- 29 Owning a Volkswagen
- 30 Corporate Sustainability – Think Blue.





Introduction





When is a downsize an upgrade? When you're driving a Volkswagen up!, of course. The up! is a city car but looks can deceive; it's small but solid, solid but effortlessly stylish. At Volkswagen we're always thinking about how to make the best cars for the times and the up! takes our latest ideas and wraps them in a mix of proven technologies and state-of-the-art advances.

At its heart is an innovative, highly efficient 3-cylinder, 1-litre petrol engine that outputs generous figures of 55kW and 95Nm. Mated to a smooth and responsive 5-speed manual gearbox, the up! is no slouch in the driving department.

Inside the cabin you'll find a surprising amount of space; the up! will carry four in comfort. It includes all the amenities you'd expect from a larger, more obviously luxurious car and safety-wise it's well-protected by carefully-engineered crumple zones, driver and front passenger airbags and more.

A key feature of the up! is the City Emergency Braking function. This is a laser-based emergency braking system designed to help a driver avoid a low-speed crash or reduce its severity. Up front you'll find a simple and clear dashboard arrangement that includes the optional unique maps + more portable infotainment device (PID) (that incorporates satellite navigation, Bluetooth® phone connectivity, media player, vehicle information and Think Blue. systems), highly tactile switchgear and easy-to-read gauges.

On the outside, you'll immediately be struck by the up!'s welcoming demeanour and confident stance, highlighted by its clean lines and elegant design touches including the unique front end 'smile', a distinctive rear hatch and body-coloured bumpers, mirrors and door handles. At this year's New York International Motor Show, the Volkswagen up! was given the greatest accolade of all, beating 33 other finalists to be named the 2012 World Car of the Year. It's a clear indication the vehicle doesn't just make promises: it delivers on them. Voted on by 64 international motoring journalists drawn from 25 countries, the award recognises this year's most outstanding vehicle across a range of criteria, including performance, value, safety, environmental impact and emotional appeal.

The up! is a car for our times, for drivers who are in tune with the times. It's a car for those who care about the environment. For those who care about design and technology. But most of all, it's a car for those who care about driving.



This vehicle has been awarded a maximum 5 Star Rating by ANCAP.

Exterior

Make a big impression

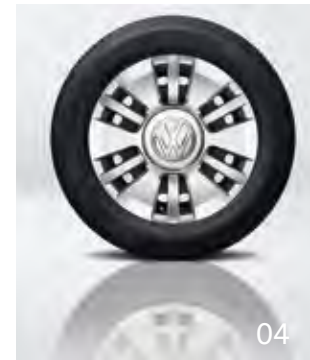
It's all about presence. The up! is a compact vehicle but its stance and dimensions all command attention. From its distinctive front end to its equally-innovative rear hatch, quality touches abound and there's not a hint of compromise in sight.

The up!'s silhouette strikes a careful balance between compact dimensions, aerodynamics and interior space. The front end is purposeful and

unmistakably Volkswagen. The body is well-proportioned. The rear is ultra-modern. From every angle, it's a handsome car and detail touches like body-colour bumpers, mirrors and door handles complete the package, transforming the entire car, with all its curves, angles and components, into a complete, coherent design statement.



01



01. Body styles

Three doors or five? The choice is yours. Make no mistake: the up! will comfortably seat four adults and transport in style. The up! is designed to suit your personal preference in styling and practicality.

02. Air intakes

First impressions are important. The up!'s air intakes tell you from the outset that this isn't just a car that's been carefully engineered for performance, efficiency and comfort; it's also a car with plenty of personality. The design emphasis on horizontal lines give the up! its unique 'smile' and marks it out as a car that's been designed with humans in mind. It's a car that's as enjoyable to drive as it's economical to own.

03. Daytime Driving Lights

Safety is a key design criterion for all Volkswagens and the up! is no exception. Daytime driving lights in the headlight housing up front improve visibility to other road users in all conditions, while the unique vertical rear tail light design integrates seamlessly with the hatch and similarly improves visibility and safety from following traffic.

04. Wheels

The up! is shod with 14-inch steel wheels and Volkswagen designed wheel trims with aluminum highlights. The up!'s 165/70 tyres offer high grip and low rolling resistance. Better yet, every up! comes with a full size steel spare wheel stowed under the load space.

05. Fittings

It's the little things that matter. It's not enough to design a great front end, body or tail for a car; they must work in harmony to produce the best aerodynamic and aesthetic results. The small details play a key role in pulling the design together and the up!'s body coloured bumpers, exterior mirrors and door handles ensure that the exterior design is as coherent as it is efficient.

Interior

Sit back, relax

The up!'s interior offers a beguiling mix of space, comfort and convenience. Our design team understood that no matter how efficient and technologically advanced the up! may be, it still had to deliver the same quality ride as its bigger siblings. Not only do its interior dimensions belie its external size, it also offers safety and style to match.





01. Dashboard

At Volkswagen we always put a lot of thought into our dashboards. They must be functional and deliver all the information a driver needs without being distracting, garish or hard to read. The up!'s dashboard design is deliberately simple while the Black Pearl dashboard cover adds a touch of style. One look and you'll understand.

02. Controls

Just about every car made these days has a radio head unit and an air conditioning system but where the up!'s stand out is in their easy to use controls. These are systems you're likely to be adjusting as you're driving, so we've taken care to ensure they fall easily to hand and are simple and logical to operate, without distracting you from the road.

03. Air vents

Attention to detail was a recurring theme throughout the up!'s design process and no control or element was too small to be carefully considered. Take the up!'s air vents and instrument pod, for example. Their round shapes and simple operation make them convenient and safe to use while driving. In fact, all of the up!'s switchgear is highly tactile, offering precise feedback and control with minimal disruption to your drive.

04. Interior space

How did we do it? The up!'s four seat configuration defies its external dimensions, and careful engineering was the key. Most importantly, there were no compromises to comfort or safety. The front seats include integrated head restraints and the driver's seat is height adjustable. The full centre console offers a storage tray and cup holders, while the back seats will surprise with their leg- and elbow-room.

05. Rear seat

The up!'s split-folding rear seats have been carefully designed for maximum comfort and utility, allowing you to change the ratio of passenger to load space as required. The variable height luggage floor is another innovation that you'll soon come to love, while the large hatch opening and 251-litre luggage capacity (with rear seats upright) mean you can fit a surprising amount of cargo into the car's rear.

06. MP3 Compatible CD Player with AUX-IN

The up!'s audio system features a MP3 compatible CD player with 6 speakers fitted as standard. Sometimes the best audio selection is the one you have in your pocket. Which is why the up!'s audio system also includes an auxiliary input socket. This means you can plug in your smartphone or other mobile music device and access your favourite songs and playlists without skipping a beat.

Maps + More Portable Infotainment Device (PID) option

Everything at your fingertips

The up!'s maps + more Portable Infotainment Device (PID) does exactly what its name suggests—it's a central repository of information that will make your driving experience easier, safer and more convenient. It has four key areas of functionality: navigation, media player, hands-free telephone and vehicle information.

Best of all, it's also a portable unit, constructed in partnership with Garmin, so you can detach it from the up! and synchronise it with your computer, downloading new applications, navigation information and more from the Garmin Fresh Portal.





01. 5-inch colour touchscreen display

The rapid growth of smartphones and tablet devices has made it clear that a touchscreen display is the simplest and most effective way to manipulate information on a screen and the maps + more unit features a generous five-inch colour touchscreen. It's so good that you'll have trouble keeping your hands off it.

02. Integrated docking station

The maps + more unit fits securely into a dashboard-mounted integrated docking station. Not only does this provide a safe mount for the unit, it ensures it's easy to see, easy to reach and easy to recharge.

03. Satellite navigation system

No more fiddling about with GPS on your smartphone, no need to purchase a stand-alone unit; Navigon's navigation system is built into the maps + more unit and it'll ensure you can always ask for directions.

04. Media player – 32GB micro SD card slot

The maps + more unit also functions as a media player. It's fully integrated with the up!'s speakers and includes a 32GB micro SD card slot and Bluetooth® audio streaming, so you can bring a generous selection of your favourite music, podcasts and audiobooks with you.

05. Bluetooth® phone connectivity

Hands-free phone connectivity isn't just a convenience, it's an important safety feature, so naturally the up! offers full Bluetooth connectivity and an easy to use interface on the maps + more unit's touchscreen with phone book display and the ability to pair two phones.

06. Think Blue trainer

There's more to efficient driving than simply having a well-designed car; it's also important to drive with efficiency in mind. The Think Blue. trainer helps you make better driving decisions for gear changes, fuel consumption and more.

07. Vehicle status

Comprehensive trip computer, park distance control (option), low fuel warning and door ajar warning. Best of all maps + more is also a complete vehicle status information system that can display 6 vehicle statistics simultaneously.

08. Garmin branded Portable Infotainment Device (PID)

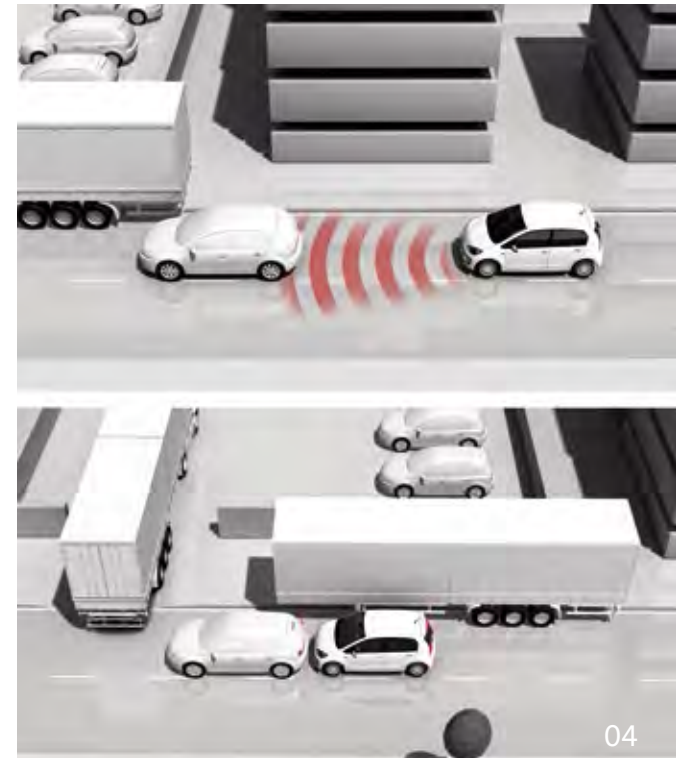
Garmin is one of the leaders in mobile navigation technology and has worked closely with Volkswagen to deliver a PID that combines its feature-rich positioning system with all the extra functionality required to make it an indispensable companion on every trip, no matter how short or how long.

Technology and Safety

No compromises

For Volkswagen, technology and safety are key. Every technology that makes a car easier or more responsive to drive is making a contribution to its safety. That said, our safety-specific systems are engineered to provide the maximum protection for the vehicle and all its occupants, both by helping avoid collisions and by minimising their effects should one occur.

The up! is a small car, but it's big on safety. Rigorously designed and tested to meet safety standards around the world, it benefits from Volkswagen's continuing commitment to producing vehicles that are as safe to ride in as they are enjoyable to drive.





01



04



06



07

Technology

01. 1.0 litre 3-cylinder fuel injected petrol engine

Good things come in small packages. The up!'s precision-engineered engine is at the pinnacle of efficient power plant design. It outputs a healthy 55kW of power and 95Nm of torque, with the up!'s light weight body the car feels responsive and fun to drive. So whether the traffic is cruising or commuting you'll be keeping up with the pace—or setting it.

02. 5-speed manual gearbox (not pictured)

The up! features a responsive five-speed manual gearbox, perfect for those drives when you want to control every aspect of your car's performance. It's a driver's gearbox: smooth but with plenty of feel, it leaves you in no doubt as to what gear you're in with gear shift recommendations displayed and will deliver a satisfying drive day after day after day.

03. Hill Start Assist (HSA) (not pictured)

Hill Start Assist holds the vehicle stationary for 1.5 seconds on hills with an incline greater than 5 percent, when the foot brake is released, by temporarily locking the brake pressure. This intelligent feature provides a comfortable hill start, which importantly avoids any rolling back.



This vehicle has been awarded a maximum 5 Star Rating by ANCAP.

Safety

04. City Emergency Braking

A laser-based emergency braking system, City Emergency Braking is active at vehicle speeds from 5–30km/h. It monitors the area ahead of the car and primes the brakes if it detects a hazard; if a collision is imminent it will apply the brakes and minimise the chance of an impact. This feature is ideal for city start/stop traffic. The city emergency braking function is standard across the up! range and has impressed by taking out an advanced Euro NCAP award.

05. Rigid safety cell with crumple zones (not pictured)

The up! has been carefully engineered to crumple and absorb any impact, leaving the rigid safety cell intact. Careful attention to materials and structural engineering has produced a small car with enviable protection for those inside. Dual-phase steels have been used in the front side members, sills and side roof frame, along with hot-formed steel panels, maximising the up!'s impact resistance.

06. Driver and front passenger airbags

Airbags help ensure that in the event of a collision, the up!'s occupants will be kept as safe from harm as possible. Offering the driver and front passenger front airbags as well as side and head impact protection, they round out the up!'s comprehensive safety package.

07. Electronic Stabilisation Program (ESP)

A well-established safety technology, Volkswagen's Electronic Stabilisation Program monitors variables like yaw, steering angle and traction. It can individually brake each wheel to help reduce (or even prevent) oversteer, understeer or loss of traction.

Special Order Options

Make it your very own

What fun is a new car if you can't customise it, even just a little? At Volkswagen we understand the urge to make your up! uniquely your own, so we offer a number of optional packages and items that will help you stamp your individuality on your new automobile.

With packages designed to enhance both the driving experience and the up!'s overall amenity and appearance, not to mention a stylish sunroof, we're sure that you'll be able to find the up! that's just right for you.





01. Comfort Drive Package (not pictured)

The Comfort Drive Package includes a number of technologies that will make your daily drive, whether you're heading to the local shops or travelling further afield, more convenient. These include a Multi-Function Display, cruise control and rear parking distance sensors.

02. Comfort Style Package

The Comfort Style Package is for those who want to add just a touch more sophistication to their up! It includes handsome 15-inch 'Waffle' alloy wheels, front fog lights, leatherette upholstery, heated front seats with embossed up! badging and white trim surrounds and carpet floor mats—just the thing for those moments when you feel like showing off your new ride.

03. Panoramic electric glass sunroof

Few things look or feel as modern as the clarity and simplicity of a carefully-shaped sheet of glass, as evidenced by the up!'s stylish rear hatch. The panoramic electric glass sunroof adds further visual appeal, not to mention fresh air and sunshine, to the up!'s list of attractions.

Volkswagen Genuine Accessories

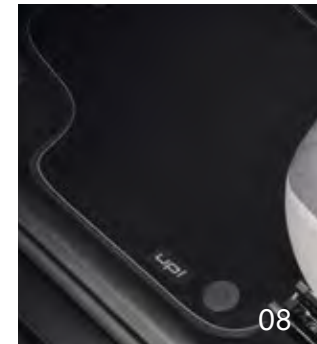
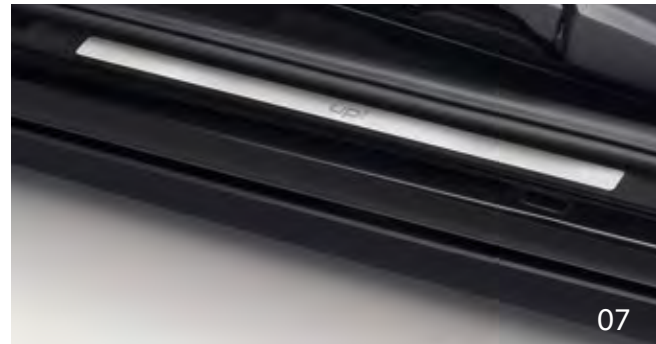
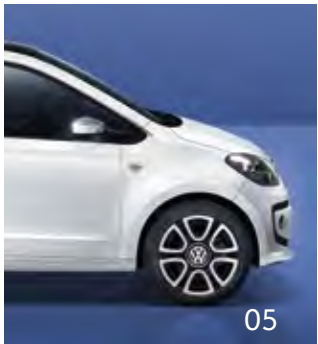
The finishing touches

Our comprehensive range of genuine accessories give you the freedom to customise the look and feel of your vehicle to reflect your own personality and individual sense of style. The product philosophy is simple – to deliver innovative technologies and premium design – right down to the finest detail. Each and every genuine accessory has been designed specifically with the up! in mind and has been

engineered and rigorously tested to ensure that it meets the same high standards of quality as the vehicle itself.

For more information or to experience the full range of genuine accessories designed to suit the up!, visit your local Volkswagen Dealer.





- 01. Roof Bars & Bike Carrier
- 02. Body Decals
- 03. Key Cover
- 04. Sports Body Components
- 05. 16" Triangle Wheel
- 06. 16" Upsilon Wheel

- 07. Door Sill Protection
- 08. Textile Floor Mat Set
- 09. Sun Blinds
- 10. Rear Park Distance Sensors & Chrome Tailgate Protective Trim
- 11. Moulded Boot Mat & Loading Sill Protection

It is noted that the above accessories may have an effect on fuel efficiency. Items such as sports equipment and iPod® are for illustration purposes only and are not available for purchase from Volkswagen Group Australia or its dealers. For a full range of genuine accessories please refer to the model specific accessories tab at www.volkswagen.com.au

Features & Specifications

Safety and Security	up! 3 Door	up! 5 Door
→ Airbags		
Driver and front passenger airbags	S	S
Driver and front passenger side/head airbags	S	S
→ Anti-theft		
Electronic engine immobiliser	S	S
Security coded audio system	S	S
Visible Vehicle Identification Number (VIN)	S	S
→ Body		
Door side impact protection	S	S
Fully galvanised with 12 year anti-corrosion perforation warranty	S	S
Rigid safety cell with front and rear crumple zones	S	S
3 door hatch body style	S	–
5 door hatch body style	–	S
→ Brakes		
Automatic flashing brake lights activated in emergency braking situation	S	S
Anti-lock Braking System (ABS)	S	S
Brake Assist	S	S
City Emergency Braking	S	S
Electronic Brake-pressure Distribution (EBD)	S	S
→ Child restraints		
Child seat top tether anchorage points, mounted on rear seat back (2)	S	S
ISOFIX child seat anchorage points, outer rear seats	S	S
→ First aid kit	A	A
→ Head restraints		
Front integrated head restraints	S	S
Rear height adjustable and removable (2)	S	S
→ Lighting		
Daytime driving lights, halogen light integrated in main headlight	S	S
Fog lamp, rear	S	S
→ Locking		
Remote central locking with deadlock mechanism (separate release for luggage compartment)	S	S
Automatic locking after takeoff (programmable)	S	S
One touch lock/unlock for driver	S	S
Child safety locks on rear doors	–	S
Fuel filler cap, key lock	S	S
Key cover, up! lettering	A	A
→ Luggage cover, removable	S	S

Features & Specifications

Safety and Security (Continued)	up! 3 Door	up! 5 Door
→ Seat belts		
Front with pre-tensioners and belt force limiters	S	S
Visual and acoustic warning for driver and front seat passenger seat belts not fastened	S	S
Visual indication for rear seat passenger seat belts fastened or not fastened	S	S
3 point seat belts for all passengers	S	S
→ Traction control		
Electronic Differential Lock (EDL)	S	S
Anti-Slip Regulation (ASR)	S	S
Electronic Stabilisation Program (ESP)	S	S
Exterior Equipment/Styling		
→ Body enhancements		
Body coloured bumper bars, door handles and exterior mirrors	S	S
Exterior mirror caps, chrome	A	A
Glass finish rear hatch	S	S
Rear tailgate trim, chrome	A	A
Sports body enhancements – front, rear and roof edge spoiler, side skirts <small>Side skirts are only available for the 3 Door model</small>	A	A
Body decals, “motorway” and “this side up!”, black or Amalfi white	A	A
→ Paint		
Metallic/Pearl Effect paint	O	O
→ Protection		
Loading sill protection, stainless steel look or transparent film	A	A
Mudflaps, front and rear	A	A
Slimline weather shields	A	A
→ Roof		
Roof bars	A	A
Bicycle, kayak, ski, surfboard and snowboard holders	A	A
Luggage box range – 310, 340 and 460 litre volumes	A	A
→ Wheels		
Steel wheels 14x5", full wheel trims with Volkswagen logo in aluminium and 165/70 R14 tyres	S	S
Alloy wheels (Aspen) 14", (Upsilon, Classic and Triangle) 16" <small>Please consult your Volkswagen Dealer for correct wheel and tyre fitment by model</small>	A	A
Spare wheel, full size steel	S	S
Valve caps with Volkswagen emblem	A	A
Anti-theft wheel bolts	A	A

Features & Specifications

Comfort and Convenience	up! 3 Door	up! 5 Door
→ Air conditioning		
Air conditioning, manual control	S	S
Dust and pollen filter	S	S
→ Console		
Centre console with open storage compartments and 12 volt socket	S	S
→ Cup holders		
Front (1)	S	S
Rear (1)	S	S
Bottle holders in front door pockets	S	S
→ Floor mats		
Front and rear, carpet	A	A
Front and rear, rubber	A	A
→ Grab handle		
Front passenger's side folding grab handle at roof frame	S	S
→ Headlights		
Halogen headlights with clear polycarbonate lens	S	S
Daytime driving lights, integrated in main headlight	S	S
Headlight-on warning buzzer	S	S
Internal headlight range adjustment	S	S
Combined headlight and fog light switch	S	S
→ In car entertainment and technology		
AM/FM security coded radio (RCD215) with MP3 compatible CD player and auxiliary input audio socket	S	S
Maps + More Portable Infotainment Device (PID) 5" touch screen colour display with four primary menu options – Navigation, Media (media player and picture viewer via micro SD card reader), Telephone (Bluetooth® phone connectivity with phonebook display, text to speech and audio streaming) and Vehicle Information (Think Blue trainer, multi-function trip computer and vehicle status displays)	O	O
Speakers, front (4) and rear (2)	S	S
Roof mounted radio antenna	S	S
→ Instrumentation		
Speedometer, tachometer and fuel gauge, electronic odometer and tripmeter, service interval display, digital clock, warning lights including low fuel, low oil pressure and high coolant temperature and white illumination	S	S
Comfort indicator function (1 x touch = 3 x flash)	S	S
→ Interior highlights		
Black pearl finish to dashboard panel	S	S
Black gloss finish surrounding audio, air conditioning controls, air vents and headlight switch	S	S
Door sill scuff plates featuring up! lettering	A	A
Door sill protection film, black with silver highlights	A	A

Features & Specifications

Comfort and Convenience (Continued)	up! 3 Door	up! 5 Door
→ Interior lighting Interior light with time delay	S	S
→ Luggage compartment Luggage compartment protection: moulded foam Shopping bag hooks Variable luggage compartment floor level	A S S	A S S
→ Mirrors Electrically heated and adjustable exterior mirrors Manual anti-dazzle interior rear-view mirror Additional interior rear view mirror	S S A	S S A
→ Parking distance sensors, rear	A	A
→ Power steering Electro-mechanical, vehicle speed and steering input sensitive	S	S
→ Seating Easy entry driver's seat backrest release function Height adjustment for driver's seat Split folding rear seat backrest (60/40)	S S S	– S S
→ Steering wheel 3 spoke steering wheel Height adjustable	S S	S S
→ Storage Coat hooks on the central door pillars, driver and passengers side Front door pockets Glove box with lid and integrated glasses, coin and notebook holders Trays (open) in centre console (2) Rear door trays	S S S S S	S S S S S
→ Sunroof Panoramic glass sunroof Electrically slide and tilt adjustable Integrated wind deflector and sunblind	SO	SO
→ Sun visors Driver and front passenger, driver with ticket holder	S	S
→ Transmission 5 speed manual transmission Gear shift recommendation Hill Start Assist (HSA)	S S S	S S S

Features & Specifications

Comfort and Convenience (Continued)	up! 3 Door	up! 5 Door
→ Upholstery Cloth	S	S
→ Vanity mirror Front passenger's side vanity mirror	S	S
→ Windows Heat insulating tinted window glass	S	S
Power front windows	S	S
Pop out/vent rear windows	–	S
Rear window heating	S	S
Sunblinds for rear side and rear window	A	A
→ Wipers 2 speed (high and low) aero wipers with flick wipe, wash/wipe and intermittent wipe	S	S
Rear window with wash/wipe and intermittent wipe	S	S
→ 12V accessory socket in centre console	S	S
Optional Packages		
→ Comfort Drive package Cruise control Multi-Function Display (MFD) – trip time, trip length, current and average speed, speed warning, average and current fuel consumption, fuel range and digital coolant temperature display Parking distance sensors, rear	SO	SO
→ Comfort Style package Alloy Wheels (Waffle) 15x5½" with 185/55 R15 tyres (4) and anti-theft wheel bolts Front fog lights, mounted in lower bumper Leather trimmed steering wheel, handbrake lever and gearshift knob Leatherette seat upholstery with white stitching Heated front seats Floor mats front and rear, carpet The spare wheel and tyre is speed restricted in combination with the Comfort Style package	SO	SO

Technical Specifications

	up!
→ Engine	1.0 Litre
Type	3 cylinder inline petrol
Installation	Front transverse
Cubic capacity, litres/cc	1.0 / 999
Bore/stroke, mm	74.5 / 76.4
Max power, kW @ rpm	55 @ 6200
Max torque, Nm @ rpm	95 @ 3000–4300
Compression ratio	10.5:1
Fuel system	Fuel Injection
Ignition system	Electronic
Exhaust emission control	Three-way catalytic converter
Emission level [^]	EU 5 [^]
Fuel type (Recommended)	Premium unleaded 95 RON
→ Transmission	5 speed manual
Driven wheels	Front wheel drive
→ Performance [#]	
0–100km/h, seconds	13.2
→ Fuel consumption [*]	
Combined, L/100km	4.9
Urban, L/100km	6.1
Extra Urban, L/100km	4.2
CO ₂ emission, g/km	114
Fuel tank capacity, litres	35

[^] Emission level according to European Regulation (EC) No. 715/2007 and Regulation (EC) No. 692/2008.

[#] Please note figures are sourced from overseas data where equipment levels by model variant may vary.

^{*} Fuel consumption figures according to Australian Design Rule (ADR) 81/02.

The driving style, road and traffic conditions, environmental influences, fitment of accessories and vehicle condition can in practice lead to consumption figures which may differ from those calculated with these standards.

Technical Specifications

		up!
→ Running Gear		
Suspension	Front axle	Independent suspension, MacPherson struts and coil springs
	Rear axle	Torsion beam axle, trailing arms, coil springs
Steering		Electro-mechanical power assisted rack & pinion steering
Brake systems		Anti-lock Braking System (ABS) with Electronic Brake-pressure Distribution (EBD) and Brake Assist
Brakes	Front	Ventilated Discs
	Rear	Drums
Turning circle, metres		9.8
→ Weight		
Tare vehicle weight kg		880
→ Exterior Dimensions		
Overall length mm		3540
Width mm		1641
Height mm		1476
Wheelbase mm		2407
Track mm	Front	1428
	Rear	1424
→ Luggage Area Dimensions#		
Luggage area volume L	Rear seat raised	251
	Rear seat folded	951
Luggage area floor length mm	Rear seat upright	632
	Rear seat folded	1252
Luggage area width mm		At narrowest point 978
Luggage load height mm	To luggage cover	650
	To roof lining	939

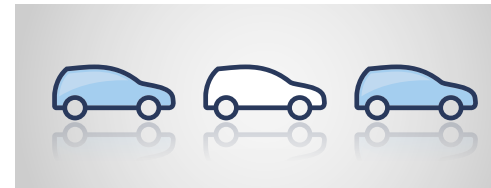
Please note figures are sourced from overseas data where equipment levels by model variant may vary.

Fuel Saving Tips

We can all Think Blue.

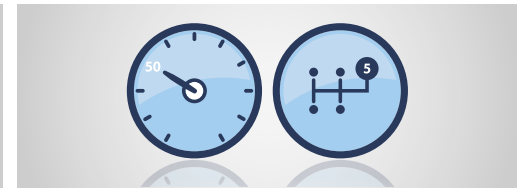
At Volkswagen, we aim to produce the most fuel efficient, environmentally sustainable vehicles possible. The good news is – we can all do our little bit to ‘Think Blue’. Below, we have summarised the best tips for how you can drive more responsibly and reduce fuel consumption even further. It’s not just your wallet that will benefit from these tips, but the environment too. Its practical benefits go far beyond just saving money and reducing emissions. Here are nine tips on how to drive more efficiently.

Be aware and save fuel. Think Blue.



01. Take it easy and save Drive the modern way and think ahead.

Drive smoothly and anticipate hazards. Hard braking and acceleration, sudden lane changes and unpredictable behaviour is fuel-inefficient.



02. Change up early and fill up later Drive in the highest gear possible.

Use a higher gear with a manual transmission. Low revs take far less energy. With an automatic, reduce acceleration and avoid a kick down.



03. Just let it roll Use overrun fuel cutoff.

With the right driving techniques, you can really save. Whilst in gear, coast down hills or towards traffic lights to reduce feeding fuel to your engine.



04. Comfort high, fuel consumption low Use auxiliary equipment in moderation.

Check the equipment you’re using – if you don’t need it, consider turning it off. De-misters, sound systems and air conditioning all use energy.



05. Savings are in the air Check your tyre pressures.

Check your tyre pressures to cut fuel consumption. Under-inflated tyres force your car to burn more fuel. Tyres in good order will help you save fuel.



06. A warm engine – a cool way to save Avoid short trips.

Plan to minimise the number of trips you need to make. Frequent short trips mean higher fuel consumption as cold engines run less efficiently.



07. Well-oiled for impressive savings Use Volkswagen approved engine oils.

A well-lubricated engine produces less emissions especially when the weather is cold or the trip is short. Change your oil at regular intervals.



08. Keep it sleek Cut aerodynamic drag.

Remember to remove roof racks, bike racks or roof boxes off your car when they’re not in use. Keep windows up and sunroofs closed to reduce drag.



09. Lightly does it Avoid unnecessary weight.

Every kilogram you load into your car takes energy to move – energy that will be supplied by burning fuel. The lighter you drive, the more you save.

Colours & Upholstery

Colours

- 01 White ●
- 02 Red ●
- 03 Light Silver Metallic ■
- 04 Dark Silver Metallic ■
- 05 Dark Blue Metallic ■
- 06 Black Pearl Effect ■

Upholstery

- 07 Anthracite Cloth ●
- 08 Black Leatherette ▲



04



05



08



07



06



Please note that Metallic and Pearl Effect paint are optional at extra cost. Black leatherette seat upholstery is available as part of the optional Comfort Style package. The print process does not allow for exact reproduction of the exterior or the upholstery colours. Please contact your Volkswagen Dealer for further information on colours and upholstery combinations.

up! Capped Price Servicing*



The up! comes with peace of mind included, with Capped Price Servicing* now available at participating Volkswagen dealers.

Authorised Volkswagen Service Centres have factory trained technicians equipped with the very latest diagnostic equipment, specialist tooling and Volkswagen Genuine Parts.

They also undertake work in accordance to factory specified guidelines and maintenance schedules, so you can be confident that your up! will be well taken care of.

* Capped price servicing is available at participating Volkswagen dealers on up! 3 and 5 door manual models first sold by an authorised Volkswagen dealer on or after 6 October 2012. Capped price servicing applies to the first 6 standard scheduled services of your vehicle which are scheduled to occur at every 15,000 km/12 month interval (whichever occurs first). Exclusions and conditions apply. For details on pricing, items not included in the capped price and for full terms and conditions please see volkswagen.com.au. Volkswagen Group Australia reserves the right to at any time modify or discontinue the Capped Price Servicing program.



Glossary

Anti-lock Braking System (ABS)

When braking, wheel speed sensors measure the road wheel speed and should one or more wheels start to lock the ABS system reduces brake pressure to that wheel. This prevents the wheels from locking during heavy or emergency braking, enabling the vehicle to remain steerable.

Anti-Slip Regulation (ASR)

ASR is a traction control system that prevents the driven wheels from spinning under acceleration by reducing engine torque. It is active at speeds above 40km/h.

Brake Assist

During emergency braking, Brake Assist aids the driver by increasing the brake pressure automatically to a level exceeding the locking limit. The ABS is thus quickly brought into the operating range, which enables maximum vehicle deceleration to be achieved.

City Emergency Braking

The City Emergency Braking function is a laser-based emergency braking system designed to help a driver avoid a low-speed crash or to reduce its severity.

At vehicle speeds between 5km/h and 30km/h, City Emergency Braking monitors an area 10m ahead of the car for vehicles which might present a threat of collision. If a collision is likely, City Emergency Braking first pre-charges the brakes and makes the emergency Brake Assist system more sensitive: if the driver should notice the risk, the car is ready to respond more quickly to their braking action. However, if the driver still takes no action and a collision becomes imminent, City Emergency Braking independently applies the brakes very hard. If the driver intervenes to try to avoid the accident, either by accelerating hard or by steering, City Emergency Braking will deactivate and allow the driver to complete the avoidance manoeuvre.

City Emergency Braking cannot replace the driver's assertiveness. The driver is still legally responsible for the vehicle and must monitor the speed and distance in relation to other vehicles. City Emergency Braking functions only between 5km/h and 30km/h, so will not assist in accidents at 'motorway' speeds. Its laser can detect vehicles which are at a standstill or which are travelling in the same direction and works at night as well as during the day. However, the sensor is compromised if it is covered by dirt, or in adverse weather conditions such as thick fog or heavy rain. To mitigate this, the sensor is sited in the area which is swept by the windscreen wipers.

Electronic Brake-pressure Distribution (EBD)

Electronic, more sophisticated means of regulating the ratio of front/rear brake pressure. Settings are varied according to driving and load conditions to ensure each wheel is braked to the optimum extent.

Electronic Differential Lock (EDL)

EDL improves driving and steering characteristics when accelerating on road surfaces where each wheel has a different degree of traction. The system operates automatically and is combined with the ABS system. Using the ABS wheel sensors, EDL monitors the speed of the individual driving wheels. When a difference in driving wheel speed is detected (i.e. when one wheel starts to spin due to differences in road surfaces, e.g. due to water or dirt) the system brakes the spinning wheel, transferring engine power to the wheel with the best traction. EDL is active in forward and reverse and operates up to 40km/h.

Electronic Stabilisation Program (ESP)

ABS, EDL and ASR traction control systems are integrated into the Electronic Stabilisation Program (ESP). In short, ESP helps ensure that the vehicle goes where you steer it even in extreme driving conditions. The ESP system constantly compares the actual movement of the vehicle with pre-determined values and should a situation arise where the vehicle starts to skid, ESP will apply the brakes to individual wheels and automatically adjust the engine's power output to correct the problem. ESP prevents the vehicle from losing control when trying to avoid an accident, for example. It also prevents spinning off on a curve due to either understeer or oversteer.

Owning a Volkswagen

Volkswagen New Vehicle Warranty

Every new Volkswagen passenger vehicle is covered by a 3-year unlimited kilometres manufacturer's warranty, which includes Volkswagen Assist (24hr roadside assistance). Every new Volkswagen passenger vehicle is also covered by a 3-year paintwork and 12-year anti-corrosion perforation warranty. In addition every new Volkswagen passenger vehicle has a 5 year/150,000km transmission warranty.

Volkswagen Assist – 24 Hour Roadside Assistance

As a valued customer, you can be assured that wherever you travel within Australia, you will have access to roadside assistance, 24 hours a day, 365 days a year. This is complimentary for the duration of the vehicle's original Volkswagen warranty period. You will receive help in the event of a breakdown or accident and if required, your vehicle will be mobilised or transported to an Authorised Volkswagen dealer.

As a Volkswagen owner you will also have access to the additional benefits of accommodation and car rental if your vehicle cannot be mobilised within 24 hours, when you are over 100kms away from home. Volkswagen Roadside Assist can also be renewed at the expiry of the original warranty, ensuring ongoing coverage for your vehicle.

Volkswagen New Vehicle Extended Warranty Insurance*

To give you added peace of mind and the assurance of added security, you have the option to extend the warranty period to suit your ownership cycle. If your Volkswagen is still covered by its New Vehicle Warranty, we can offer you a 12 months or 24 months/ unlimited kilometres extension on the original warranty period already existing with your Volkswagen manufacturers Warranty. You then have the assurance that your Volkswagen remains a Volkswagen. For further information regarding warranty and extending your vehicles warranty period, please consult your local Volkswagen dealer, refer to your owner's handbook or visit volkswagen.com.au.

* Volkswagen New Vehicle Extended Warranty Insurance product is provided by Allianz Australia Insurance Limited (Allianz) ABN 15 000 122 850, AFSL Licence No. 234708. In arranging this cover, Volkswagen Group Australia Pty Ltd, ABN 14 093 117 876 and the authorised dealers act as agents of Allianz and not as your agent. Limits apply to the benefits you can claim. For full terms and conditions of cover, please refer to the relevant Volkswagen New Vehicle Extended Warranty Insurance policy document, available to you from your Volkswagen authorised motor dealer.

Volkswagen Genuine Accessories®

Volkswagen Genuine Accessories® are designed for your vehicle and approved by Volkswagen, with particular regard to safety. The workmanship, dimensional accuracy and materials used in these parts comply with factory specifications. To ensure safety and reliability, Volkswagen recommends the use of Volkswagen Genuine Accessories®. Volkswagen Authorised Dealers offer a 3-years/unlimited kilometres warranty on genuine accessories if fitted prior to vehicle purchase, or a 2-years/unlimited kilometres warranty if fitted after purchase.

Volkswagen Finance

Whether you are buying, borrowing or leasing, Volkswagen Finance will certainly make you think differently about financing and insuring your new Volkswagen. Committed to meeting the needs of Volkswagen drivers across Australia, we offer a range of leasing, financing and insurance products, each with distinct advantages depending on your specific circumstances. Our packages are designed to suit your individual requirements and budgeting needs with fast approval times.

Speak to your participating local Volkswagen Dealer today for the best financial solution and ultimate insurance protection for your vehicle or visit volkswagenfinance.com.au.

VOLKSWAGEN FINANCE



Think Blue.

Creating a sustainable future together

Volkswagen is committed to sustainability now and in the future, for us this means taking responsibility for the environment by getting involved in initiatives that contribute to a sustainable future through our products and behaviour.

We call this way of thinking, Think Blue. Volkswagen aims to become the leading automotive manufacturer for the environment and economy, making efficient and sustainable vehicles available to everyone. We want to inspire and motivate people to get involved in ecological sustainability, on the road and everywhere else.



Volkswagen Group Australia Pty Ltd
24 Muir Road Chullora NSW 2190
ABN 14 093 117 876

Printed in Australia
August 2013

Publication: **VGA0077**



Volkswagen is distributed by Volkswagen Group Australia Pty Ltd, 24 Muir Road, Chullora, NSW 2190, ABN 14 093 117 876. Specifications are as planned at July 2013, for Model Year 2014 and are subject to change without notice or obligation. All information in this specification sheet is correct at the time of publication, however variations may occur from time to time and Volkswagen, in so far as it is permitted by law to do so, shall not be liable in any way as a result of any reliance by any person on anything contained in this specification sheet. Authorised Volkswagen dealers will provide up-to-date information on model application, design feature, prices and availability on request.

Volkswagen Insurance & Volkswagen Extended Warranty are provided by Allianz Australia Insurance Limited (Allianz), AFS Licence No. 234708, ABN 15 000 122 580. In arranging this insurance Volkswagen Financial Services Australia Pty Limited, ABN 20 097 071 460 & Volkswagen Group Australia Pty Ltd, ABN 14 093 117 896 and the authorised dealers act as agents of Allianz and not as your agent. Volkswagen Finance is a trading name of Volkswagen Financial Services Australia Pty Limited. Locked Bag 6252, Regents Park NSW 2143. Tel: 02 9695 6311.

