



# S80





# WE ARE VOLVO. WE PUT PEOPLE FIRST.



HELLO

| 1

We are Swedish. Scandinavian designers always start with the person who's going to use an object and ask, "What can we do to make this person's life better, easier or more comfortable?" We've always used this philosophy when we design our cars. So, while other car manufacturers might start with technology and try to squeeze people in around it, we begin by designing our cars around you. We ask what you need and then use our technical skills to make your life easier, better, safer and more beautiful. Form follows function, and when you design a car inside and out with people in mind, it looks naturally beautiful. We think that looking at and interacting with our cars should make you feel great, every day.


Designing cars around people has led to many innovations over our 86-year history. The three-point safety belt in your current car? That was our invention from 1959. We've solved a few environmental issues too. In 1976 we developed the Lambda Sond, a sensor that monitors exhaust gas, reducing emissions and boosting performance as well as economy. It's still part of every petrol-engined car in the world.

Innovation is at the core of Volvo. Perhaps it's because of where we come from.



IN SWEDEN, GREAT DESIGN IS A  
WAY OF LIFE, NOT A LUXURY.



- 
- ◀ For such a small country, we've produced more than our share of creative talent. That's because we know that to be truly creative, you've got to believe in yourself and do things the way you know they should be done, regardless of what others are doing.

Take our seats. In the early 1960s, we consulted with a team of orthopaedic surgeons at Chalmers University of Technology here in Gothenburg. They wondered why a group of car designers wanted to see them. Nobody had thought to ask an orthopaedic surgeon's advice when designing a car seat before. But the ergonomic seat designs we developed as a result have made our cars world-famous for their outstanding long-distance comfort.

Like all Scandinavian craftsmen, we use only the best materials for the job, like the ultra-strong boron steel in our safety cages. We use natural, authentic materials inside our cars – not because they're fashionable this season, but because they make you feel good when you touch them and they're better for your health.

Creating a beautiful experience for you is natural for us. Because in Sweden, great design is a way of life, not a luxury.

# YOU DON'T NEED TO SHOUT TO STAND OUT FROM THE CROWD.

YOUR NEW CAR

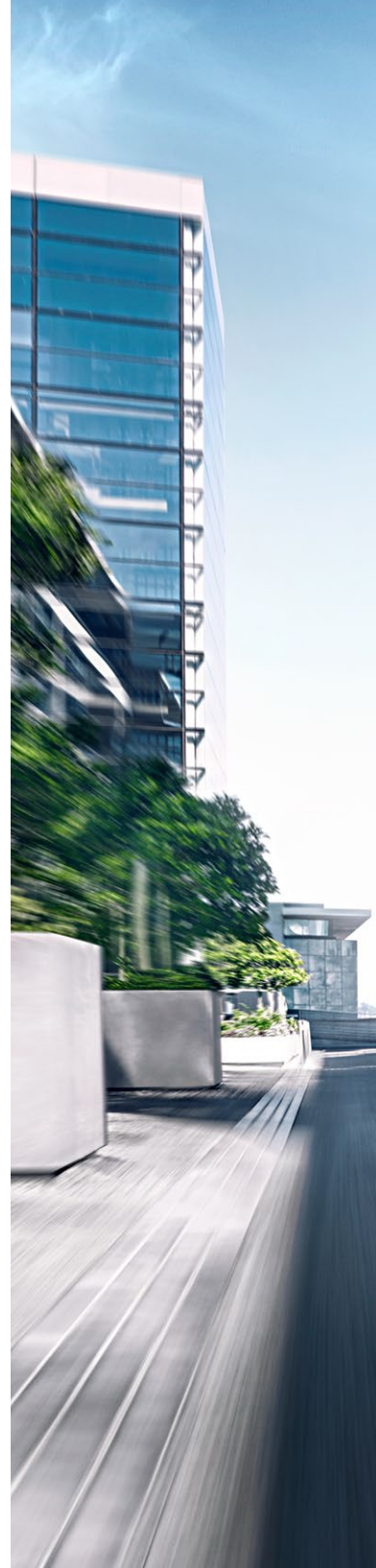
VOLVO S80 | 4

When you fly, you travel business class – so why settle for anything less when you drive? The Volvo S80 has always been our benchmark when it comes to luxury, comfort and interior space. Now, thanks to a raft of updates, our executive sedan is able to offer even more of what it does so well. Its tastefully restrained Scandinavian design is complemented by advanced technology, exquisite materials and superior craftsmanship. Every well-crafted detail of your new S80 will make you feel rewarded. No wonder this executive sedan has won awards around the world; from the Executive Car of the Year award in the UK to Technology Innovation Car of the Year in China.



Every day you delight in your S80's sumptuous  
ambience, you remind yourself that you've arrived.

FIND YOUR NEAREST DEALER AT  
[VOLVOCARS.COM.AU](http://VOLVOCARS.COM.AU)











# AND YOU THOUGHT TRUE SOPHISTICATION HAD GONE OUT OF STYLE.

OUR DESIGN VISION

VOLVO S80 | 7

Our S80 is the embodiment of sophisticated elegance, from its aerodynamic nose through to the way its roofline swoops to the boot with graceful coupe-like proportions. For our new S80, we've made the front and rear bumpers blend in with the car's shape even more satisfyingly while the new, wide lower grille – punctuated on each side by new daytime running lights – makes our svelte sedan look even wider and lower than ever, giving you an executive helping of road presence.

“The whole effect is one of sophisticated elegance”, explains our Design Manager Örjan Sterner. “We've worked hard to put a wider proportion on the front grille and we've added more detail like matte silver touches all round to give the car an even more elegant feel. The new S80 benefits from crisper lines that make it look even more exclusive.” Here's a car that will make you feel special every single day – and that's even before you climb onboard.

Volvo's classic rear “hockey stick” lights are a great example of Swedish design, in which form follows function. They're beautiful, but they're shaped that way to reflect the S80's strong shoulder line (an expression of its strength).

TO SEE MORE OF THE S80'S ELEGANT DESIGN FEATURES, GO TO [VOLVOCARS.COM.AU](http://VOLVOCARS.COM.AU)



SCANDINAVIAN  
INTERIOR DESIGN.  
ON FOUR WHEELS.



SCANDINAVIAN  
INTERIOR DESIGN.  
ON FOUR WHEELS.



The S80's elegant cabin has always been an exceptionally pleasant place to be, offering club class luxury for passengers with the most refined tastes. Whether you're in the driver's seat or stretching your legs out to enjoy a little thinking time in the rear, you'll appreciate our all-new optional Ambient Light, which casts a warm white glow over your surroundings and gently picks out features like the front seat cupholders, as well as the seat controls and door releases. "The overall effect is very warm and cosy, like being in a warm Swedish house on a cool night", says Stefan Sällqvist, the Manager of Driving Dynamics.



Natural materials like the leather used on top of the dashboard and instrument binnacle give the S80 a real air of Scandinavian design authority.

300 KILOMETRES BEFORE LUNCH.  
AND YOU FEEL AS FRESH  
AS WHEN YOU SET OFF.



It's all about how you drive – with the Four-C chassis, you get to choose between three different modes. Comfort and Sport are self-explanatory. Advanced really optimises your car's grip. And you can change between modes at any time at the push of a button.

[READ MORE ON VOLVOCARS.COM.AU](http://VOLVOCARS.COM.AU)



Our new S80 will get you places – and when you arrive, you'll emerge unruffled after a smooth, engaging ride. Cruising on motorways, stability is excellent and you're isolated from wind and road noise. Push it harder along smaller, twisty roads and you'll find a level of poise and composure unexpected from a large car.

With the S80, you get a choice of three chassis. There's our standard Comfort Chassis, which we've spent thousands of hours perfecting. It combines effortless agility and handling with the comfort you'd expect from a car of this class. Then there's

our intelligent Four-C chassis, which processes enormous amounts of information. It performs 500 calculations per second to adapt to conditions in real time, resulting in a beautifully smooth, fluid drive. Finally, there's our Lowered Sport chassis which puts you a crucial 15mm closer to the ground and has been stiffened for even better cornering.

Adaptive Cruise Control (ACC) is another treat you should not be without. It takes the stress out of motorway driving, continuously monitoring the gap to the vehicles in front and automatically adjusting the car's speed if necessary.







# VOLVO SENSUS. YOU'RE IN CONTROL, NATURALLY.

## ***SENSUS***

YOUR SPACE | 13

Yes, the new Volvo S80 has a beautifully sculpted exterior. But why should passers-by get all the enjoyment? Since you'll spend most of your time in the driver's seat, we've designed a gorgeous space around you. We've made all your instruments and controls as easy to use and intuitive as possible. We call this approach to connecting you and your car with the world around you "Sensus". Our beautiful new Adaptive Digital Display is the latest expression of this philosophy. Not only does it give you all the information you need without overwhelming you with data, it also gives you three modes to choose from – Elegance, Eco and Performance.

Together with the Sensus screen in the dashboard, it makes commanding your drive an effortless experience. And with Sensus Connected Touch, the 7-inch Sensus screen becomes a connected multimedia hub, giving you access to embedded connected navigation, music streaming and Internet connection.

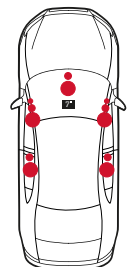
But it's not just our displays that are things of functional beauty. We've put the same amount of care into the steering wheel, as well as our iconic floating centre stack with our trademark "manikin" climate control buttons.

### FULL SONIC IMMERSION

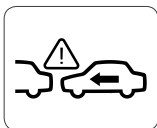
At Volvo, we believe you should enjoy the very best audio experience. That's why we've designed our state-of-the-art Premium Sound Multi Media System with Audyssey Laboratories. Using twelve high-fidelity loudspeakers and MultEQ sound processor technology, this 5x130 W system provides an unparalleled aural experience for every passenger and connects easily with external media players.

[READ MORE ON VOLVOCARS.COM.AU](http://VOLVOCARS.COM.AU)

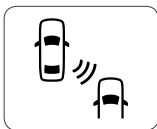
- ◀ Our beautifully designed, high-res colour display allows you to choose between three driving modes – Elegance, Eco and Performance.



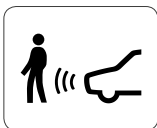




In town, City Safety is designed to prevent or minimise a collision with the car in front if it stops suddenly. This advanced IntelliSafe system works at speeds of up to 50 km/h and senses if you're about to collide with another car, then, if necessary, applies the brakes.



Our Blind Spot Information System (BLIS) alerts you to vehicles closing up on you in your blind spot. As a car, lorry or motorbike approaches from behind, an amber warning lamp in the relevant door mirror lights up – and goes off again when you're clear to change lanes. You'll find this a particularly useful feature on busy motorways.



Because we care about other road-users just as much as you, Pedestrian Detection with Full Auto-Brake watches out for people walking into your path and applies the brakes if you're unable to react in time.

[READ MORE ON VOLVOCARS.COM.AU](http://VOLVOCARS.COM.AU)



Can you see our radar? It's hidden away in the S80's grille but working hard to keep you and people outside the car safe. We call it Collision Warning with Full Auto Brake and Pedestrian Detection. You'll call it a safety breakthrough.

# OH YES. DID WE MENTION SAFETY?

**INTELLISAFE**

WE CARE ABOUT YOU | 15

In 1927 our founders, Assar Gabrielsson and Gustaf Larson, decided to make really strong cars that could cope with our rough country roads. But strength alone wasn't enough. They also had a vision: "Cars are driven by people," they said, "so the guiding principle behind everything we make at Volvo is – and must remain – safety". Now our goal is that, by 2020, nobody shall be seriously injured or killed in a new Volvo. We think our founders would have approved.

In order to help us achieve this goal, and in keeping with our philosophy of making your life easier, your S80 has a whole suite of intuitive safety technologies inside it. They're there to support your daily driving, protecting you in the event of an accident and often preventing collisions in the first place. We call this IntelliSafe.

We know S80 owners love driving, but in a world of busier and busier roads, you are constantly exposed to other people's mistakes. That's why IntelliSafe offers some really smart technologies such as City Safety, Collision Warning with Full Auto-Brake and Pedestrian Detection as well as Cyclist Detection.

And because you love driving, it's good to know that your S80 comes equipped with other IntelliSafe technologies like Dynamic Stability and Traction Control (DSTC). If there's a risk of your S80 losing stability, DSTC applies just the right amount of brake force and reduces engine power as needed in order to prevent any skidding. You'll probably never notice a thing. But that's OK, we're just doing our job.



WE THINK SUSTAINABLE  
DRIVING IS EXCITING.  
SO WILL YOU.



## ***DRIVE-E***

YOUR ENGINE CHOICE | 17

Drive-E is at the heart of every Volvo we make. It's our all-encompassing approach to sustainable driving, our innovative thinking behind a whole range of technologies that will give you more efficiency, and lower running costs, without compromising on a pleasurable drive.

Our Drive-E technological advances include reducing the friction within our engines and a host of aerodynamic improvements to help you get the maximum benefit from your engine and the fuel

you put into your car. We always strive to make our manufacturing processes more sustainable. All of the electricity for our factory in Sweden comes from clean, hydroelectric power. After all environmentally-aware mobility is central to our philosophy of intelligent, thoughtful luxury.

Integral to this is the powerful, efficient engine available for the S80, the six-cylinder T6 AWD 224kW petrol.



BECOME YOUR OWN  
INTERIOR DESIGN  
CONSULTANT.



If you like the finer things in life, but prefer to make your own design choices, Inscription is an interior package as well as a palette of luxurious options that you can combine in your own way. You might choose our refreshing air-ventilated seats with semi-aniline soft leather upholstery. This type of leather has minimal surface treatment, making the seats feel softer and more natural. Even better, our leather-trimmed dashboard raises your S80's cabin ambience to a whole new level. And the expressive 19" Inscription Bor wheels are the perfect finishing touch to your creation, your new S80 executive sedan.



# WHICH S80 ARE YOU?

EXPRESS YOURSELF

VOLVO S80 | 20

## S80

Includes:

Adaptive Digital Display with Active 8" TFT Display | LED day running lights | Cruise Control | Driver and passenger airbags | Safety belts on all 5 seats with belt reminder | City Safety | Dynamic Stability and Traction Control (DSTC) | Rain sensor with Tunnel Detection | Electronic climate control | Load cover | Illuminated vanity mirrors | Front armrest with cup holders in tunnel console | Rear armrest with cup holders and storage | 60/40 split rear seat | Auto dimmed rear view mirror | Audio controls in the steering wheel | Immobiliser | Rear door power child locks | Heated and power retractable rear view mirrors | Electric park brake | ISOFIX rear outer seat | Trip computer | Tempa spare wheel and jack | Outer temperature gauge | Remote control central locking | Colour-coordinated lower mouldings | Double visible exhaust pipes | Side Impact Protection System (SIPS) | Inflatable Curtains | Whiplash protection integrated in the front seats (WHIPS)



## + LUXURY

Includes standard equipment level plus the following:

18" Magni silver bright aluminium wheels | Sensus Premium Sound Multimedia infotainment system 5x130W, 10 speaker audio with 7" Screen, AUX, USB, DVD and MP3 functions | Volvo Navigation System with voice control | Keyless drive with Personal Car Communicator | Volvo Guard Alarm | Front and rear parking sensors | Active Bi-Xenon Lights with headlight wash system | Chrome exterior décor front and rear | Modern Wood décor inlay | Leather instrument panel | Leather upholstery | Leather steering wheel with silk metal inlays | Leather illuminated gearshift knob | Power driver seat with memory | Power passenger seat | Heated front seats | Electric folding rear headrests | Interior Air Quality System (IAQS) with humidity sensor | Blind Spot Information System | Driver Alert System includes Lane Departure Warning, Lane Keeping Aid, Active high beam control, Forward collision warning and Road Sign Information | Adaptive Cruise Control and Collision Warning with Full Auto Brake, including Queue Assist with Pedestrian and Cyclist detection | Speed sensitive power steering





# YOUR S80 IS YOUR HOME AWAY FROM HOME. GIVE IT YOUR SIGNATURE.

## PERSONALISE YOUR INTERIOR

Of course, if you were simply interested in style but not substance, you wouldn't be choosing a Volvo. Our interior finishes are not only beautiful, all our interior materials are rigorously tested for allergy-inducing substances, health-impairing materials and harmful emissions. Added to this, the optional Clean Zone Interior Package filters pollutants and pollen out of the cabin.

Choose an S80 and you'll enjoy an elegantly designed cabin as standard. Run your fingers across the dashboard's silk metal accents or touch the fine cloth surfaces on the door pillars – you'll find a superior finish everywhere you look. And to give your interior a personal signature, we have a range of options for you that express the very best of Scandinavian style and craftsmanship.



Our latest ergonomically-designed Comfort seats are available in textile or a variety of leather finishes – from our dynamic range right up to our sumptuous perforated, ventilated Inscription leather. For those cold winter mornings you may want to order our heated leather three-spoke steering wheel so you can gently warm your hands. Whether you like a technical, metal-finish look or a warm, wooden finish, there's a variety

of eye-catching console veneers available. And finally, you'll appreciate the clarity of information available on our innovative Adaptive Digital Display with three display modes.

Overleaf you'll find a host of interior options that will help you personalise your new S80. If you want to see more, please visit [VOLVOCARS.COM.AU](http://VOLVOCARS.COM.AU)



UPHOLSTERIES – INSCRIPTION VENTILATED SOFT LEATHER



Inscription Soft Leather, 2G01  
Offblack in Anthracite Black interior



Inscription Soft Leather, 2G0N  
Chestnut in Anthracite Black interior



Inscription Soft Leather, 2G0J  
Toscana Tan in Anthracite Black interior



Inscription Soft Leather, 2G12  
Soft Beige, in Sandstone Beige interior\*



Inscription Soft Leather, 2G1B  
Soft Beige in Sandstone Beige interior\*\*

UPHOLSTERIES – PERFORATED LEATHER



Perforated leather, 2201  
Offblack in Anthracite Black interior with Quartz headlining



Perforated leather, 221B  
Soft Beige in Sandstone Beige interior with Soft Beige headlining

UPHOLSTERIES – DYNAMIC LEATHER



Dynamic leather, 2L01  
Offblack in Anthracite Black interior with Quartz headlining



Dynamic leather, 2L1B  
Soft Beige in Sandstone Beige interior with Soft Beige headlining



Leather, 2101  
Offblack in Anthracite Black interior with Quartz headlining



Leather, 210G  
Blond in Anthracite Black interior with Quartz headlining

UPHOLSTERIES – LEATHER

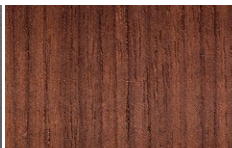


Leather, 211B  
Soft Beige in Sandstone Beige interior with Soft Beige headlining

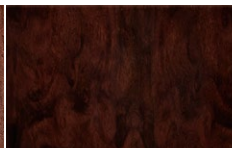
INLAYS



Inscription Sanded Silver



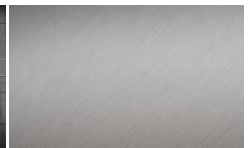
Modern wood



Classic wood



Cross Avenue



Feather Line aluminium

\*with Espresso Brown dashboard top (lower part Soft Beige)  
\*\* with Offblack dashboard top (lower part Soft Beige)

# TECHNICAL SPECIFICATIONS



S80	T6
<b>ENGINE / PERFORMANCE</b>	
Engine	Six-cylinder, 24 valve DOHC turbocharged petrol
Location	Front transverse
Drive	All-wheel drive
Displacement	2953cc
Power	224kW at 5600rpm
Torque	440Nm at 2100-4200rpm
Acceleration 0-100km/h	6.4 seconds
Top speed limited	250km/h
Fuel economy (combined) l/100km	10.0
CO <sub>2</sub> g/km	239
<b>TRANSMISSION</b>	
Automatic	6-speed Adaptive Geartronic
<b>STEERING</b>	
System	Electro-Hydraulic Power Assisted Steering (EHPAS)
Turns to lock	2.8
Turning circle	12.2 metres
<b>CHASSIS</b>	
	Coilover strut front suspension with multi-link independent rear suspension
	Anti-dive, anti-lift function with anti-roll bars front and rear
Comfort chassis	•
<b>WEIGHT</b>	
	1786kg
<b>TOWING CAPACITY</b>	
Maximum trailer weight (braked)	2000kg
<b>FUEL TANK</b>	
Capacity	70 litres

S80	LUXURY
MODEL / ENGINE AVAILABILITY	T6
<b>AUDIO AND COMMUNICATION</b>	
Sensus Premium Sound Multimedia Infotainment: AM/FM radio, 1-CD/DVD, MP3, 10 speakers, Dolby® Pro Logic® II Surround System, 7" colour screen	•
AUX, USB and iPod connectivity	•
Bluetooth® phone connectivity including audio streaming	•
Audio controls in steering wheel	•
Volvo Navigation System (VNS) with voice control	•
Rear Seat Entertainment system (RSE)	\$4,175
Remote control for audio system	\$125
<b>SUPPORT SYSTEMS AND INTERIOR EQUIPMENT</b>	
Adaptive Digital Display (Elegance, Eco, Performance) with active TFT crystal display	•
Rear parking camera	•
Front and rear parking sensors	•
Rain sensor with Tunnel Detection (not with IR protected windscreen)	•
Sunroof, glass, electrically operated	\$2,650
Auto dim rear view mirror	•
Auto dim rear view mirror with compass	\$100
Speed sensitive power steering	•
Sport chassis	\$1,000
Nivomat, auto levelling system	\$1,350
Four-C chassis (not with Nivomat)	\$4,175
Gearshift paddles	\$250
Electric windows	•
Electric park brake with drive-away release	•
Front armrest with cup holders and storage	•
Rear armrest with cup holders and storage	•
Tread plates	•
Load holder	•
12V power outlet	•
Parking ticket holder	•
Sunglasses holder	\$100
<b>SEATING</b>	
Electrically-adjustable front driver seat, with memory	•
Electrically-adjustable front passenger seat	•
Electric rear headrests	•
Heated front seats	•
Heated rear seats	\$525
Quick-fold backrest, passenger seat	\$100
Split rear seat, 60/40	•
<b>INTERIOR TRIM</b>	
Comfort seat, leather upholstery	•
Comfort seat, perforated leather upholstery	▲
Dynamic seat, leather upholstery	▲

S80	LUXURY
MODEL / ENGINE AVAILABILITY	T6
<b>INTERIOR TRIM cont.</b>	
Ventilated seat, Inscription executive soft leather upholstery	▲
Textile floor mats	•
<b>Inlays (centre console):</b>	
- Modern Wood	•
- Classic Wood	\$700
- Shimmer Graphite aluminium	\$700
- Aluminium	\$700
- Inscription Sanded Silver	\$700
Leather instrument panel	•
Leather steering wheel with silk metal inlay	▲
Leather three-spoke steering wheel with silk metal inlay	•
Wood steering wheel	\$900
Leather illuminated gearshift knob	•
Chrome interior trim and surrounds	•
Illuminated vanity mirror, driver and passenger	•
<b>EXTERIOR</b>	
Electrically-retractable and adjustable heated door mirrors with puddle lights	•
Bright décor around side windows	•
Chrome exterior trim surrounds front and rear	•
Dual exhaust tailpipes	•
Metallic paint	\$1,750
<b>ALLOY WHEELS</b>	
7.0 x 16" ODEN silver	▲
7.0 x 17" PANDORA silver	▲
7.0 x 17" REX silver bright	▲
7.0 x 17" SADIA silver	▲
8.0 x 18" YMIR light light grey	\$500
8.0 x 18" MAGNI silver bright	•
8.0 x 18" SLEIPNER black chrome	\$500
8.0 x 19" BOR Inscription diamond cut matte iron stone	\$1,725
8.0 x 19" BOR Inscription diamond cut glossy tech black	\$1,725
Tempa spare and jack	•
Lockable wheel bolts	\$150
<b>LIGHTING</b>	
Home Safe, approach and puddle lighting in door mirrors	•
Mid level interior lighting	•
High level interior lighting	\$125
Rear foglight	•
LED Daytime Running Lights (DRL) and turn indicators	•
Active Bending Lights (ABL) including headlight wash system	•
Headlight wash system	•

S80	LUXURY
MODEL / ENGINE AVAILABILITY	T6
<b>CLIMATE</b>	
Electronic Climate Control	•
IR protected windscreen	\$625
Heated steering wheel	\$250
Heated windscreen	\$200
Heated rear window	•
Sun curtain rear window	•
Sun curtain side windows	\$250
Tinted windows, rear side doors and cargo area	\$850
Humidity sensor	•
Interior Air Quality System with sensor (IAQS)	•
Clean Zone Interior Package (CZIP) includes IAQS	\$275
<b>SECURITY</b>	
Central locking and immobiliser with key integrated remote control	•
Rear door power child locks	•
Private locking trunk	\$100
Volvo Guard Alarm	•
Keyless entry and drive with Personal Car Communicator	•
Inclination sensor	\$125
Laminated windows	•
<b>SAFETY</b>	
City Safety	•
Driver Alert System includes Lane Departure Warning, Lane Keeping Aid, Active High Beam Control, Forward Collision Warning and Road Sign Information	•
Adaptive Cruise Control (ACC) and Collision Warning with Full Auto Brake (CWAB), including Queue Assist with Pedestrian and Cyclist Detection (also includes Driver Alert System)	•
Blind Spot Information System (BLIS)	•
Anti-lock Brake System (ABS)	•
Electronic Brake Distribution (EBD)	•
Emergency Brake Assist (EBA)	•
Emergency Brake Light (EBL)	•
Dynamic Stability and Traction Control (DSTC)	•
Driver and passenger dual stage airbags	•
Inflatable Curtains (IC)	•
Side Impact Protection System (SIPS) with airbags in front seats	•
Whiplash Protection System (WHIPS)	•
Intelligent Driver Information System (IDIS)	•
Front safety belts, automatic height adjustment, belt tensioner with detection and reminder	•
Rear seatbelts with detection and reminder	•
Warning triangle	•
First aid kit	\$100
<b>DRIVE-AWAY PRICING*</b>	
Please contact your local Volvo dealer for drive-away pricing, visit <a href="http://volvocars.com.au">volvocars.com.au</a> or call 1800 786 586 for referral to your nearest Volvo dealer.	

\* Vehicles must be purchased from an authorised Volvo dealer. Information is correct at time of printing, however the manufacturer reserves the right to make changes without notice. Please confirm model availability, specification and pricing details with your Volvo dealer. Option pricing displayed is GST inclusive. Accessories and / or options fitted to vehicles may affect vehicle performance, fuel consumption and emissions.

• Standard ▲ No cost option — Not available

Printed September 2013 / MY14





Sleipner, 8x18", Black Chrome



Inscription Bor, 8x19"  
Diamond Cut/Matte Iron Stone



Inscription Bor, 8x19"  
Diamond Cut/Glossy Tech Black



Balius, 8x18"  
Silver Bright



Fortuna, 8x18"  
Glossy Black



Fortuna, 8x18"  
Silver Bright



Freja, 8x18"  
Diamond Cut/Dark Grey



Freja, 8x18"  
Diamond Cut/Light Grey



Magni, 8x18"  
Silver Bright



Makara, 8x18"  
Silver Bright



Modin, 8x18"  
Diamond Cut/Matte Terra Bronze



Modin, 8x18"  
Diamond Cut/Glossy Black



Modin, 8x18"  
Diamond Cut/Matte Iron Stone



Ymir, 8x18"  
Light Light Grey



Sadia, 8x17"  
Silver



Pandora, 7x17"  
Silver



Rex, 7x17"  
Silver Bright



Saga, 7x17"  
Diamond Cut/Black



Agena, 7x16"  
Silver Stone



Oden, 7x16"  
Silver



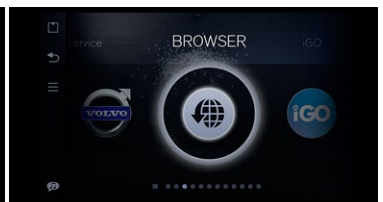
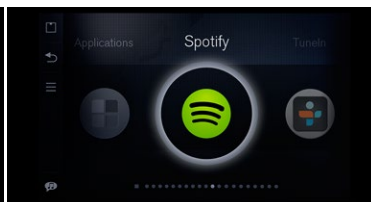
# MATCH YOUR S80 TO YOUR LIFE.

ACCESSORIES

VOLVO S80 | 32

The most pleasurable part of buying a new Volvo is putting your personal stamp on it. You can do that by choosing accessories that reflect your own taste and that cater to your particular lifestyle. Our Park Assist Camera (front blind view – above) has a 180° field of vision, which is invaluable when negotiating tight exits and junctions, while Sensus Connected Touch turns your 7-inch sensus screen into an internet-connected multimedia hub.

FIND MORE ACCESSORIES ON [VOLVOCARS.COM.AU](http://VOLVOCARS.COM.AU)



Need a cup of coffee? A bunch of flowers in a hurry? Thanks to Sensus Connected Touch it's easy to search for destinations using Google® before linking seamlessly to iGo®, our connected embedded navigation system with visual and voice directions.

Sensus Connected Touch comes with voice-controlled Spotify®. If, for example, you want to listen to the music of a particular artist, just say their name. The system also searches any connected USB sticks, tablets or smartphones. And the whole universe of global internet radio is just a prompt away.

Your Volvo can keep you in touch with family and friends via Facebook®, email and Twitter®. Even better, you can turn your Volvo into a Wi-Fi hotspot using a USB 3G/4G dongle. Or simply tether your smartphone to Sensus Connected Touch, and you'll create a wireless internet connection you can then use for other devices, such as a tablet.

**Please note.** Some functionality may be restricted by vehicle speed.

THE MOST  
CAREFREE WAY TO  
OWN A CAR. EVER.



We love it when you're happy. When things are easier than you expect, or go faster and become better. Because when you buy a Volvo, you buy into the easiest way to own a car. Financing, insurance, servicing, changing tyres, cleaning – those aspects of ownership that you might not find very interesting, are exactly the ones that we love to make easier and better for you. That's why your Volvo dealer will always offer you a whole range of services all designed around you, delivering the most carefree ownership experience possible.

**BUYING AND OWNING**

- Warranties
- Financing
- Leasing
- Insurance
- My Volvo website

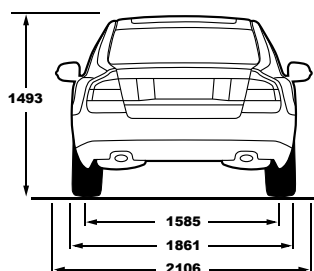
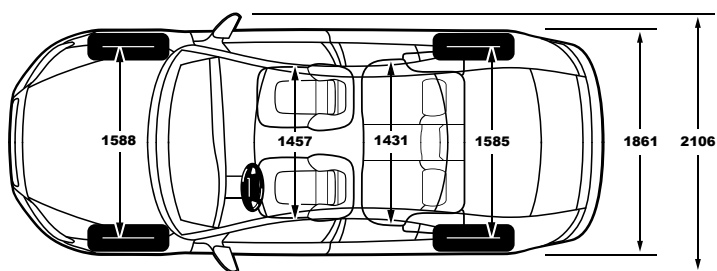
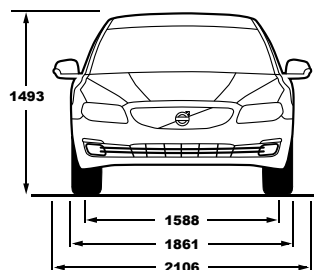
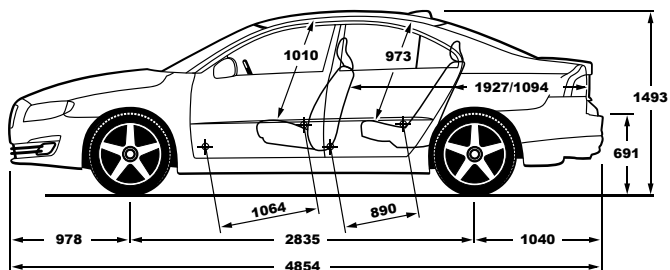
**SERVICE AND MAINTENANCE**

- Volvo Service 2.0
- Software updates
- Personal Service Contact
- Alternative transport
- Volvo Professional Car Care

**IF SOMETHING HAPPENS**

- Volvo Roadside Assistance
- Repairs
- Volvo Glass Services
- Panel Repair
- Car Climate Services

FIND OUT MORE AT [VOLVOCARS.COM.AU](http://VOLVOCARS.COM.AU)



---

T6 AWD

Engine type:	3.0L I6 petrol twin-scroll turbo
Transmission:	Six-speed Geartronic
Fuel consumption, litres/100km, mixed cycle:	10.0
CO <sub>2</sub> g/km:	239
Max. power output, kW at rpm:	224 / 5600
Max. torque, Nm at rpm:	440 / 2100–4200
Acceleration, 0–100km/h in sec:	6.4
Top speed km/h:	250
Fuel tank, litres:	70
Environmental classification:	Euro 5 (2011)

All technical data may be subject to change. Please talk to your Volvo dealer for the latest information.

Upgrade your S80's performance with unique engine management software from Polestar, Volvo's racing and performance partner. We've been using their expertise on the track to help us continually improve our engines' efficiency and performance.

[FIND OUT MORE ON POLESTAR.COM](http://FIND_OUT_MORE_ON_POLESTAR.COM)



**Please note:** Some of the information in this brochure may be incorrect due to changes in product specifications that may have occurred since printing. Some of the equipment described or shown may now only be available at extra cost. Before ordering, please ask your Volvo dealer for the latest information. The manufacturer reserves the right to make changes at any time and without notice to prices, colours, materials, specifications and models.

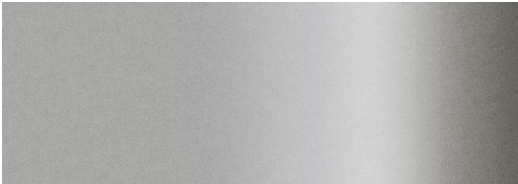




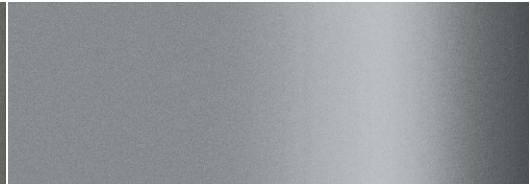
707 Crystal White Pearl



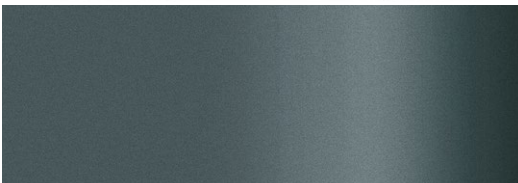
614 Ice White



711 Bright Silver metallic



477 Electric Silver metallic



705 Biarritz Blue metallic



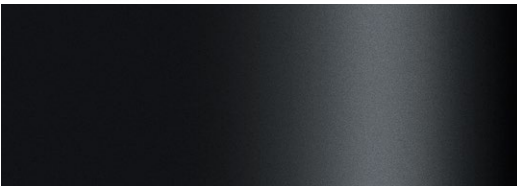
498 Caspian Blue metallic



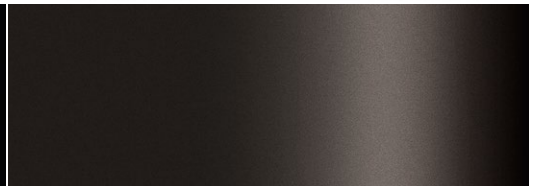
467 Magic Blue metallic



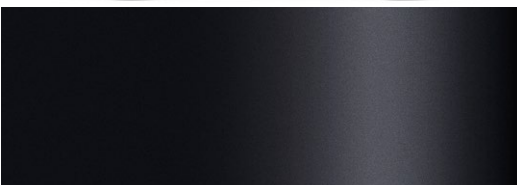
700 Twilight Bronze metallic



492 Savile Grey metallic



487 Ember Black metallic



452 Black Sapphire metallic



019 Black Stone

**Please note:** It's not possible to reproduce exact original shades in printed matter. Please ask your dealer to show you samples.



VOLVO S80