



MASERATI

EXCELLENCE THROUGH PASSION

QUATTROPORTE RANGE





MASERATI. EXCELLENCE THROUGH PASSION.

MASERATI TAKES PRIDE IN A LONG ITALIAN TRADITION OF THE DESIGN AND CONSTRUCTION OF FINE CARS. A TRADITION OF STRIVING FOR PERFECTION IN EVERY DETAIL, ENABLING DRIVERS TO EXPERIENCE THE POWER OF THOROUGHbred ENGINES, WHILE ENSURING HIGH LEVELS OF COMFORT. EVERY SINGLE MASERATI IS A TESTAMENT TO A SPLENDID HISTORY OF UNRIVALLED RACING ACHIEVEMENTS, UNIQUELY EXQUISITE INTERIORS, AND UNMISTAKABLE, STYLISH DESIGN. EVERY MASERATI EMBODIES THESE PRINCIPLES AND BENEFITS FROM AN UNRIVALLED HERITAGE WHILE SHOWCASING THE BEST OF ITALIAN DESIGN AND CRAFTSMANSHIP.



MASERATI QUATTROPORTE.  
MOTORING IN ITS MOST EXQUISITE FORM.

PHENOMENAL POWER, INSPIRATIONAL HANDLING, SUMPTUOUS LUXURY, AND THE GRATIFYING KNOWLEDGE THAT WHATEVER YOUR DESTINATION YOU'LL ARRIVE IN STYLE. THIS IS WHAT THE MASERATI QUATTROPORTE ASSURES ITS OWNERS – THE FORTUNATE FEW. MASERATI'S FLAGSHIP IS UNIQUE IN ITS ABILITY TO BLEND ALL THE QUALITIES OF A PRESTIGE, EXECUTIVE SALOON WITH THE UNCOMPROMISING PERFORMANCE AND DRIVING EXHILARATION OF A CLASSIC GRAND TOURER. THIS DUAL CHARACTER IS ALSO EXPRESSED THROUGH THE CHOICE OF THREE DIFFERENT VERSIONS: THE QUATTROPORTE 4.2 LITRE AND THE QUATTROPORTE S AND QUATTROPORTE SPORT GT S WITH 4.7 LITRE ENGINE.



MASERATI QUATTROPORTE • 4,2 LITRE

MASERATI QUATTROPORTE S • 4,7 LITRE



MASERATI QUATTROPORTE SPORT GT S • 4,7 LITRE



THE MASERATI QUATTROPORTE'S DESIGN IS THE WORK OF THE UNRIVALLED STYLING HOUSE, PININFARINA, AND REFLECTS THE CAR'S CHARACTER TO PERFECTION.





ITS STYLE AND ELEGANCE ARE COMBINED WITH A PHYSICAL, MUSCULAR PRESENCE THAT STARTS WITH THE CONCAVE VERTICAL SLATS IN THE FRONT GRILLE AND EXTENDS ALL THE WAY DOWN THE SIDES TO THE TAIL LIGHTS. LEDS IN THE HEADLIGHTS, WIDE WHEEL ARCHES, AND A LONG, AERODYNAMIC NOSE SECTION THEN SERVE TO HIGHLIGHT THE QUATTROPORTE'S PERFORMANCE POTENTIAL – AND PROVIDE A CLEAR INDICATION OF THE POTENCY THAT EXISTS UNDERNEATH THE BONNET.







ONLY AN ENTHUSIASTIC PASSION FOR VEHICLES IN THIS CLASS COULD GENERATE A CAR WITH A STYLE SO ELEGANT AND YET AT THE SAME TIME SO AGGRESSIVE. THE CONCAVE BARS OF THE NEW RADIATOR GRILLE AND THE RED ORNAMENTATION ON THE TRIDENT MAKE ITS COMPETITIVE SPIRIT EVEN CLEARER. ANOTHER EXCLUSIVE FEATURE OF THE MASERATI QUATTROPORTE SPORT GT S IS PROVIDED BY THE HEADLIGHTS, WITH THEIR BLACK-EFFECT INTERNAL CASING.



EXQUISITE DETAILING.



ALL ENVELOPING LUXURY IS AN INTEGRAL PART OF THE PLEASURE TO BE EXPERIENCED IN THE MASERATI QUATTROPORTE.

EXQUISITE DETAILING



THE INTERIOR IS SIMPLY FAULTLESS IN DESIGN, QUALITY, AND CRAFTSMANSHIP: THE LUXURY WOOD PANEL WORK IS A JOY TO BEHOLD, WHILST THE SOFT POLTRONA FRAU® LEATHER UPHOLSTERY IS A DELIGHT BOTH TO TOUCH AND TO SMELL. THEN IN ADDITION THERE IS AN EXTENSIVE RANGE OF OPTIONS THAT ADDS TO THE CAR'S EXCLUSIVITY AND CACHET. THE CABIN OF THE QUATTROPORTE MIRRORS THE AWE-INSPIRING EXTERNAL CONTOURS THAT WERE PENNED BY PININFARINA, AND WHICH CONTRIBUTE SO MUCH TO THE CAR'S UNIQUE ITALIAN PERSONA.

EXQUISITE DETAILING



PURCHASING A MASERATI QUATTROPORTE MEANS CHOOSING THE VERY BEST FOR YOURSELF. IT'S A STATEMENT OF PERSONAL STYLE AND UNWILLINGNESS TO COMPROMISE, A CELEBRATION OF POWER AND PERFORMANCE, AND AN UNDENIABLE INDULGENCE THAT TURNS EVERYDAY JOURNEYS INTO EXHILARATING EXPERIENCES.



THE INTERIOR OF THE QUATTROPORTE SPORT GT S IS DOMINATED BY TECHNICAL INNOVATION AND MATERIALS SPECIALLY DEVELOPED FOR THE GREATEST DRIVING PLEASURE IN ALL CONDITIONS. THIS IS REFLECTED BY THE NEW PERFORATED ALCANTARA SEATS, CREATED FOR OPTIMAL BREATHABILITY AND UNRIVALLED SUPPORT DURING HARD CORNERING, AND THE USE OF TITANTEX, AN ALUMINIUM-COATED TITANIUM FIBRE FABRIC WITH A MODERN, HIGH-TECH APPEARANCE.



AT THE HEART OF THE QUATTROPORTE LIES THE LEGENDARY MASERATI V8 ENGINE, WHICH IS AVAILABLE IN TWO VERSIONS: THE 400 CV 4.2 LITRE UNIT, AND NOW THE EVEN MORE POTENT 430 CV 4.7 LITRE UNIT THAT'S FOUND IN THE QUATTROPORTE S. IN DEVELOPING THE LATTER, MASERATI'S ENGINEERS CONCENTRATED NOT ON OUTRIGHT PERFORMANCE BUT ON PRODUCING A SMOOTH AND PROGRESSIVE POWER DELIVERY – THE OPTIMUM BALANCE BETWEEN RESPONSIVENESS AND DRIVING COMFORT.



A UNIQUE BLEND OF ELEGANCE AND ÉLAN MEANS THE QUATTROPORTE STANDS ALONE IN THE LUXURY SALOON SECTOR: WHILST COSSETED IN AN OPULENT INTERIOR, THE DRIVER CAN ENJOY THE CAR'S INCOMPARABLE DYNAMIC HANDLING AND EFFORTLESS RAW POWER. PRAISED BY THE PRESS AND ADORED BY ITS OWNERS, THE MASERATI QUATTROPORTE IS WITHOUT QUESTION ONE OF THE PUREST EXPRESSIONS OF DRIVING PLEASURE.





THE QUATTROPORTE SPORT GT S IS THE FINEST COMBINATION OF LUXURY SALOON AND PERFORMANCE SPORTS CAR THAT MASERATI HAS EVER PRODUCED. THIS VERSION IS FITTED WITH THE MOST POWERFUL ENGINE IN THE QUATTROPORTE RANGE, ABLE TO DELIVER 440 CV AT 7,000 RPM TO MAKE DRIVING A SHEER PLEASURE IN ALL CONDITIONS.





ENJOYABLE DRIVING MEANS SAFE DRIVING, AND IN THE FIELD OF SAFETY THE MASERATI QUATTROPORTE KNOWS NO EQUAL. STATE-OF-THE-ART PASSIVE SAFETY FEATURES BROUGHT IT THROUGH THE MOST SEVERE CRASH TESTS WITH FLYING COLOURS.



WHILST IN TERMS OF ACTIVE SAFETY IT BOASTS A BRILLIANTLY ENGINEERED CHASSIS, AN INCREDIBLY RIGID BODYSHELL, AND A HIGHLY SOPHISTICATED ANTI-DIVE AND ANTI-SQUAT SUSPENSION SYSTEM. THIS FEATURES FRONT AND REAR DOUBLE WISHBONES THAT PREVENT THE FRONT END FROM DIVING DURING HEAVY BRAKING, AND THE REAR END FROM DROPPING DOWN UNDER HARD ACCELERATION.



IN ADDITION THERE'S THE MASERATI STABILITY PROGRAMME (MSP) - A TRACTION CONTROL AND STABILITY SYSTEM THAT INTERACTS WITH THE ABS, EBD AND ASR FUNCTIONS TO MAINTAIN THE DYNAMIC BALANCE OF THE CAR, OFTEN BEFORE THE DRIVER EVEN REALISES THAT THERE IS A PROBLEM. ON TOP OF ALL THIS ARE A WHOLE HOST OF OTHER SAFETY DEVICES THAT ENSURE THAT THE QUATTROPORTE IS ONE OF THE SAFEST CARS ON THE ROADS TODAY.

*T*

VERY PERSONAL TASTES.



NO TWO MASERATI QUATTROPORTE CARS ARE ALIKE. THAT'S BECAUSE EVERY QUATTROPORTE IS BUILT SPECIFICALLY TO ITS OWNER'S PARTICULAR TASTES AND REQUIREMENTS, JUST LIKE A HAND-MADE SUIT. THE IDEA OF THE BESPOKE CAR IS A TYPICALLY ITALIAN CONCEPT THAT MASERATI HAS NOW TAKEN TO THE EXTREME, WHICH IS WHY QUATTROPORTE OWNERS ARE OFFERED ALMOST LIMITLESS PERMUTATIONS OF COLOURS



MATERIALS, AND HIGH-TECH LUXURY FEATURES. IT IS IMPERATIVE THAT EVERY MASERATI BE UNIQUE BECAUSE THE PEOPLE WHO DRIVE THEM ARE UNIQUE AS WELL - DEMANDING AND EXACTING INDIVIDUALS WITH UNCOMPROMISING STANDARDS, WHO VIEW EXCLUSIVITY AS AN ESSENTIAL PART OF THEIR LIFESTYLES.

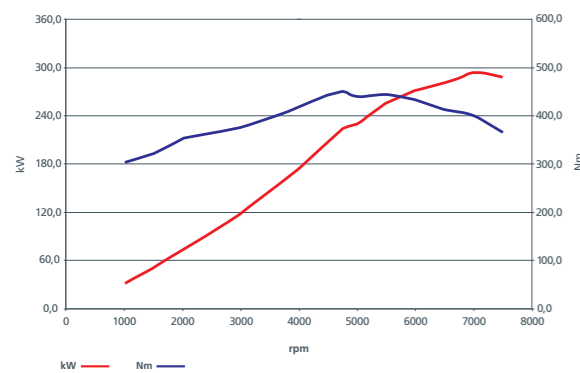


## TECHNOLOGY.

QUATTROPORTE ENGINE 4,2 LITRE V8. The Quattroporte is equipped with Maserati's renowned 4,244 cc V8 engine with wet sump lubrication. Compared with dry-sumps used on other engines, the wet sump needs a single pump to circulate the oil, which reduces its operating noise, hence increasing refinement. The 90° V8 generates an awesome 295 kW (400 CV), along with huge amounts of torque: some 460 Nm at 4,750 rpm. The crankcase and cylinder heads are made of an aluminium and silicon alloy, the main crankshaft is tempered steel, and there are five main bearings. Two chain-driven overhead camshafts per bank control the timing, and its 32 valves are controlled by hydraulic tappets. The camshafts on the intake side are fitted with a high pressure continuous phase timing variator, with valve actuation times of less than 0.15 seconds.







The ignition and injection systems are fully integrated, with features that detect any operating malfunctions and ensure that emission control regulations are met. The ECU (Electronic Control Unit) dialogues with the other systems through a CAN line (Controlled Area Network) to optimise engine management, and the accelerator is the electronic 'drive by wire' variety.

All these features combine to deliver exceptional performance. What's more, this Maserati V8 has its own unique power delivery curve which results in Quattroporte drivers experiencing supreme driving comfort and a velvet-smooth ride.

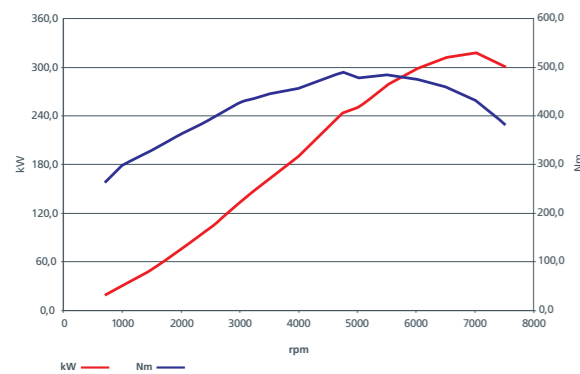
Harnessing the prodigious power of the Quattroporte's engine is a perfectly matched automatic transmission that ensures truly effortless gearchanging around town and in heavy traffic, along with the option of manual shifting when the road opens up and the opportunity of a sportier driving style presents itself. The automatic gearbox features six forward gears: when the rev-reducing sixth gear is engaged, fuel consumption improves and sound levels fall.

The Quattroporte's power and performance figures say it all:

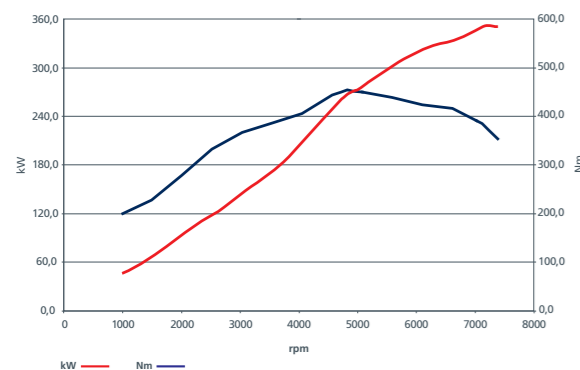
Max Power: 295 kW (400 CV). Top Speed: 168 mph. 0 to 62 mph: 5.6 seconds.



4,2



**QUATTROPORTE S ENGINE - 4.7 LITRES.** Under the bonnet of the Quattroporte S is the last word in the new family of wet sump engines: the new 4.7 litre engine unit delivers a top speed of 280 km/h and acceleration from 0 to 100 km/h in 5.4 seconds, thanks to the new eight-cylinder 90 degree V8 engine, with displacement of 4,691 cc, which can generate a power of 430 CV at 7,000 rpm, and a maximum torque of 490 Nm at 4,750 rpm. Identified by its red cylinder head covers, the new 4.7 litre engine has been specially developed to optimise the car's power and make the Maserati Quattroporte S even more exciting to drive, with the smoothest of rides and breathtaking performance. The technical features adopted ensure that this engine is exceptionally quiet and reliable, with very low friction levels for reduced fuel consumption, providing performance in which the qualities shared by all the latest Maserati engines, ; massive specific power and rapid rise and fall in rpm, are raised to new heights. Generating 82% of its torque at just 2,500 rpm, the 4.7 litre V8 engine accelerates impressively even in high gears: this means relaxed driving on long trips, and in general full use of the engine throughout its operating range.



**QUATTROPORTE SPORT GT S ENGINE - 4.7 LITRES.** This version is fitted with the most powerful engine in the Maserati Quattroporte range. Capable of 440 CV at 7,000 rpm and a maximum torque of 490 Nm at 4,750 rpm, it raises the car's performance to unprecedented levels. These figures have been achieved not only by modifying the engine's electronic control parameters, but also through in-depth development on of the racing exhaust system installed on this version. The system is controlled by air valves that open in SPORT mode to reduce back-pressure in the exhaust; this increases the maximum power available, and creates a throaty roar at low engine speeds and full symphonic sound of a genuine sports car at higher rpm.



4,7

## SPORT EXHAUST SYSTEM

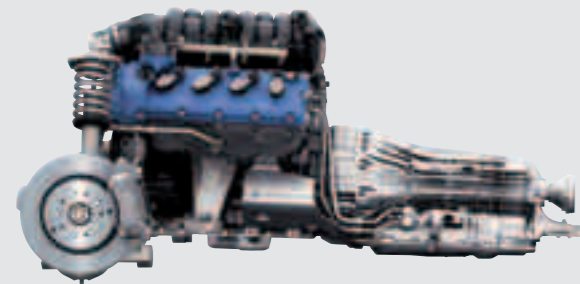
“Normal” Mode - exhaust valves closed.

In “Normal” mode, the exhaust valves are closed, forcing the exhaust gases to take a longer route; this reduces the energy level and thus tones down the sound of the engine. “Normal” exhaust system control mode is designed to optimise comfort inside the car by lowering the level of audible engine noise heard, while also limiting the maximum power available to 430 horsepower.

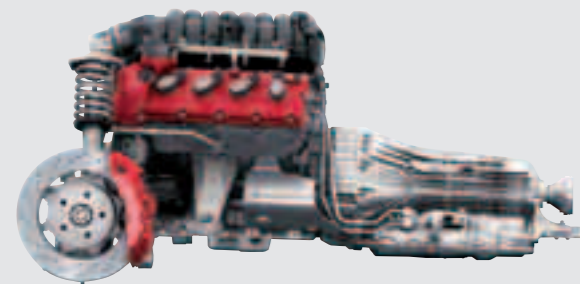
“Sport” Mode - exhaust valves open.

In “Sport” mode the exhaust valves open to offer the exhaust gases a broad, straight path: in contrast with Normal mode, this allows all the energy to discharge through the tailpipes without any restriction, enabling delivery of the maximum power of 440 horsepower combined with a truly thrilling deep sports- car roar. “Sport” mode, which the driver activates by pressing the button provided on the central console, is designed to make full use of the car’s performance potential.





QUATTROPORTE 4,2

QUATTROPORTE S 4,7  
QUATTROPORTE SPORT GT S 4,7

**AUTOMATIC TRANSMISSION.** In keeping with its role as a luxurious grand tourer, the Quattroporte offers a six-speed, hydraulic automatic transmission system that is a model of smoothness and refinement. The collaboration between Maserati and German transmission experts, ZF, has resulted in an exceptionally flexible and responsive unit that allows changes at engine speeds of up to 7200 rpm. In normal circumstances, gearshifting is managed automatically, with the system's computer software determining at what engine speeds the changes take place, and how quick they are. However, the driver is also given two options that impact on the gearshifting pattern: Sport mode and Ice mode. By pressing the 'Sport' button gearchanges are still managed automatically, but shifting up happens at higher engine speeds for a sportier drive, and the actual changes take place more rapidly, too. The Ice mode is for driving over low-grip surfaces. To reduce the risk of traction loss, it limits the amount of torque transmitted to the wheels by activating the ASR traction control, and prevents the engine from revving above 3,000 rpm. It also starts the car off in second gear instead of first. In addition, the system allows the driver complete control over the gearchanging with Manual mode, whereby clutchless sequential changes are made via the gearstick on the central tunnel - for a more sporty, involved style of driving, or via optional steering wheel-mounted paddles.

In the Quattroporte S, the extra power of the larger 4.7 litre engine is exploited to the full, with revised and upgraded software within the transmission unit. This enhances the car's acceleration and its sporty response up through the gears.



The new Quattroporte Sport GT S is equipped with the MC-Auto Shift software package for racing-style control of gear changes.

In “MANUAL MODE” the driver controls gear shifts directly, and changes are permitted up to the redline on the rpm counter. For the most enjoyable, highest-performance driving experience, an electronic gear shift indicator in the middle of the dashboard tells the driver when it is the ideal timing of the gear change; this system, which enhances the pleasure and satisfaction of the driving experience when truly putting the car through its paces, is complemented by “Trofeo” style extra-long paddles behind the steering-wheel, ergonomically shaped for easier gear changes on the most demanding roads.

In “AUTO SPORT” mode, the gear shift control software activates the MC Start Strategy function. This function allows controlled starts enabling the car to accelerate from 0 to 100 Km/h in just 5.1 seconds, instead of 5.3 seconds. MANUAL SPORT and AUTO SPORT modes both also provide electronic heel and toeing during down-shifts; this, combined with the Quattroporte Sport GT S’s other characteristics, make this saloon car capable of unprecedented sporty performance.



SUSPENSION, TRACTION CONTROL AND STABILITY, STEERING. The Quattroporte's chassis provides outstanding handling, safety and comfort. The basic structure incorporates the very latest high-tech features: double wishbone suspension at front and rear designed to ensure "Antidive" (preventing the nose from diving during braking) and "Antisquat" (preventing the tail from pitching down during acceleration) functions. The outstanding torsional and flexural rigidity of the car body gives excellent dynamic handling, for greater safety and driving pleasure.

The new 4.2 litre Quattroporte has a single "comfort" suspension setup, specially developed for a smoother ride: the result is exceptional control, with very little movement of the car's body. Skyhook suspension are available as an option on this version.

The new 4.7 litre Quattroporte S is fitted with a state-of-the-art Skyhook suspension system (with controlled damping and variable setup). With a new setting, the dampers and springs ensure more balanced roadholding while the adoption of new valves optimises the frequency response.

The Quattroporte Sport GT S is fitted with the single-setting racing-style suspension system: developed to further enhance the car's handling, it makes its steering extremely sensitive and responsive.

The additional stiffening of the suspension by 30% at the front and 10% at the rear, together with a reduction in ground clearance of 10 mm on the front and 25 mm on the rear axle respectively, provides a substantial reduction in load transfers and more effective traction control during direction changes.



**THE SKYHOOK SYSTEM.** Maserati's Skyhook system continually monitors and adjusts the suspension settings via aluminium, gas-filled dampers with proportional valves. The optimum damping rates are automatically set according to the prevailing road conditions and the way the car is being driven. This ensures a smooth and comfortable ride without sacrificing any sportiness or driver involvement. Skyhook uses sensors that record the movements of each wheel and also the car's body; its control unit then analyses this information, along with feedback about how the car is being driven, and instantly adjusts the damper settings by acting on their proportional valves.

In addition, the Skyhook system allows the driver to choose the way the suspension behaves with the option of two different settings: *Normal* and *Sport* (selected via the 'Sport' button). 'Normal' offers comparatively soft damping for a more comfortable ride - but by pressing the 'Sport' button, the system switches to a harder, stiffer set-up that enhances the agility and responsiveness of the car.

**STABILITY CONTROL AND TRACTION CONTROL.** The dynamic handling of all the Quattroporte models is further assisted by the MSP, or Maserati Stability Program, specially developed by Maserati itself to ensure safety and driving pleasure. This works in conjunction with the ABS, EBD and ASR traction control functions. Like the Skyhook\* system, the MSP can operate in two different modes (one more permissive, one more restrictive), selected by the driver using the 'Sport' button on the central console, which simultaneously changes the damper setup, stability control and gear shifting speed.

**STEERING.** The steering is direct and accurate when the car is being driven hard, but also light when parking. The electronic power-assisted steering system ensures that the level of assistance provided is always proportional to the car's speed, guaranteeing the maximum sensitivity when driving at high speed, together with light, easy handling when parking.

\*not available on Quattroporte Sport GT S.



QUATTROPORTE 4,2

**WEIGHT DISTRIBUTION.** Its weight distribution is the defining characteristic of the Quattroporte range. In the Quattroporte, the engine is located behind the front axle towards the cabin, thus transferring more weight to the centre of the car. With the gearbox located at the rear, this means that not only is it remarkably well balanced, with 49% of its weight at the front and 51% at the back, but also that the car's traction and acceleration are enhanced, due to the additional load over the rear driving wheels.

**BRAKING SYSTEM.** The Maserati Quattroporte's braking system comprises four ventilated discs (330 mm at both the front and rear) with four-piston fixed callipers at the front and two-piston versions at the rear, along with a power brake. To optimise its performance, the system also features ABS to prevent the wheels from locking up during hard braking, and EBD that ensures that the braking action is always optimally distributed between the front and rear axles. These are both integrated into the Maserati Stability Programme (MSP) stability control system. These features are instrumental in shortening stopping distances and ensuring that the driver can maintain directional control of the car whilst braking hard, even on wet and slippery surfaces.







QUATTROPORTE SPORT GT S 4,7

The Maserati Quattroporte S and the new Quattroporte Sport GT S are equipped with a high-performance braking system developed in association with Brembo. The dual-cast disc consists of a cast iron friction (or braking) ring and an aluminium hub - thus combining cast iron's superior braking performance at high temperatures with the light weight of aluminium. The two models conceal further technical excellence in their brake callipers. At the front, the discs are operated on by six-piston mono-bloc aluminium brake callipers - mono-bloc callipers having more resistance to deformation in extreme conditions.





LIGHTS. The lights on the new Quattroporte range, both front and rear, are not only highly distinctive, but exceptionally efficient, too. LEDs feature prominently in these units to ensure the highest level of visibility, whilst the headlights are truly state-of-the-art.

Both the Quattroporte and Quattroporte S feature self-levelling Bi-Xenon headlights as standard. Bi-Xenon headlights are unquestionably the best there are, but on the Quattroporte their effectiveness is enhanced still further by the new Adaptive Light Control system, a mechanism that makes the headlights turn in the direction of the car when cornering. This improves the illumination of the road and surrounding areas, and is therefore an important safety feature when travelling at night on winding routes. With the headlights on, either main or dipped, an electronic control unit monitors the steering wheel and its angle, as well as the car's speed. With this information it activates special electric motors that rotate the light cones through angles of up to 15°. For safety reasons the system only works at speeds over 3 mph, and above 75 mph it deactivates.

Thanks to the 10 LEDs in the bottom of the front light clusters, the headlights also provide the Daytime Running Light function – an important safety feature. Another headlight feature is the indicators integrated into the headlight unit, along with high pressure washers. The foglights are separate units that are integrated in the front bumper, and provide a particularly broad beam.

The rear light units also feature LEDs: each unit has no less than 34 of them. The key advantages of LEDs are that they light up more quickly than ordinary lightbulbs, they are brighter, last longer, and also use up less energy. The new Quattroporte Sport GT S is fitted with headlights featuring a distinctive black-effect internal casing.



SAFETY. The passive safety systems fitted to the Quattroporte make it one of the best cars in the world for occupant safety. Its airbags operate via four sensors located at the front of the car and on its sides, and through a control unit next to the central tunnel. Thanks to the front sensors, the front airbags are dual stage and inflate in proportion to the severity of the impact. The Quattroporte is also fitted with side airbags incorporated in the front seats, and window airbags as well, to ensure that the front passengers receive the maximum protection in the event of a lateral impact. The seatbelts, both front and rear, feature the latest generation pretensioners and load limiters, so that the occupants are held securely in the optimum position even when extremely strong deceleration takes place. Rear Isofix fasteners then offer secure mountings for child-seats, so that the youngest passengers are properly protected.

A special Glass Kit is available as an optional extra: this causes the windows at the front to reflect infra-red rays for added protection against sunlight. In addition, privacy windows are available at the rear – these are 35% darker than the standard type.



COMFORT. From the driver's point of view, perhaps the most important change to the new Quattroporte's interior is the driver's seat, which is now even more comfortable and ergonomic – an improvement that has been achieved without impinging on the generous rear legroom behind it. In addition, the seat shape has altered and now features four sets of piping. Other interior alterations include: modifications to the multifunctional steering-wheel which now has a racing grip; controls located closer together on the central console; new graphics on the instrument panel and clock face; and a small storage compartment that has been added to the central tunnel.

All versions of the Quattroporte feature front seats with 14-position electric adjustment (including 4-way lumbar adjustment). The driver's seat has a 3 position memory and benefits from an easy entry/exit system whereby the seat moves backwards and the steering column is raised. Heated front seats are an optional extra, as is the Comfort Pack that provides heating, air ventilation, and a massage function.

Then not forgetting those in the rear, the seats there can be almost as versatile as those in the front. As an optional extra, they too can be electrically adjustable for both reach and angle so that the people in the back can easily find a comfortable position – and then change it at the touch of a button. Again, these seats can be ordered with heating, air ventilation and massage functions, providing a spa-like haven of serenity.



QUATTROPORTE SPORT GT S INTERIOR. The most sporty model in the Quattroporte range also clearly proclaims its character through the style of its interior, using specific materials.

The seats, which are state of the art in terms of ergonomics and comfort, have a stylised M for Maserati on the backs. The central sections of the seats are upholstered in perforated Alcantara, for optimal breathability and a firm support during hard cornering; Alcantara is also used on the side panels, the front armrest, the steering-wheel and the gear lever knob.

The interior finishes on this version are a celebration of technology and workmanship. The material used is the groundbreaking TitanTex, an ultra-lightweight aluminium-coated titanium fibre fabric, made even more special by a specific processing, which gives the interior a high-tech, high-performance look, as well as a shinier, more three-dimensional overall appearance. The steering paddles, integral with the steering column, have a decorative chromed finish that gives their edges definition: they are also longer in shape, to ensure a good grip even when the steering wheel is on a tight lock. The interior finishes are completed by the exclusive addition of the name of the model in relief on the dashboard.

Aluminium pedals are available as an option: specially designed for racing-style driving, they provide outstanding grip when the brake and accelerator are depressed and released in quick succession.





The 450 litre boot is uniform in shape and can accommodate up to four golf bags, depending on their size. Then to maximise its carrying capacity, there's a prestigious luggage set that's been specially designed for the Quattroporte. Boot space is also optimised by the provision of a tyre inflation kit with its own compressor instead of a spare wheel. However, a 17" spare wheel is available as an optional extra, which can be fitted under the floor of the boot (in the case of the Quattroporte S, this is an 18" wheel). The Quattroporte can also be specified with TPMS (Tyre Pressure Monitoring System) or with run-flat tyres that allow the car to travel up to 75 miles after a puncture.

The high level of standard equipment in the new Quattroporte range includes a refrigerated compartment inside the front armrest, two retracting cupholders in the central rear armrest, and an electric sunblind for the rear window.

**CONTROLS.** The Quattroporte's interior is a masterpiece of ergonomic design, with all the most important controls and buttons falling immediately to the driver's hand. The main controls (Park Off, Ice, Sport, and MSP Off buttons) are located where only the driver can reach them. The central locking on/off button and rear window sun blind control are situated separately to the right of the central display. The bottom of the console then contains a bank of controls with its own display screen for the front and rear climate control system.

Simplicity and user-friendliness are key to the equipment and features found in the Quattroporte, so each button has just one function, and the graphics on it immediately identify its function.

The central tunnel controls include the electric handbrake button, which is slightly inset to prevent its accidental use. To disengage the brake, the driver presses the button for a second time, or pushes down on the accelerator pedal. Not only is this a more convenient way of applying the handbrake, it's an important safety feature, as well. There is also the 'Park' function that automatically engages the electric handbrake whenever the engine is switched off. The Park Off button on the dashboard allows this function to be disabled if the car has to be moved around with the engine off. Last but not least, the central tunnel is fitted with a double cupholder with chromed edges, and an ashtray plus a cigarette-lighter.



**FINE WOODS.** In the time honoured traditions of Maserati, the ultimate care and attention is lavished on the interior detailing of the Quattroporte, and the fit and finish reflects the very best in Italian craftsmanship.

The extensive use of wood for large panelled areas rather than just small decorative inlays gives the interior a special feeling of luxury and warmth. A wide range of wood types are available, including three new varieties that have been specially introduced for the new range: Starwood, Vavona and Polished Wengé. There is also the option of Piano Black finish, and now Blue Laque, as well.

*Starwood* is particularly modern and sophisticated. The grain patterns, vertical on the central console and horizontal on the door panels, combine a neutral shade with green and grey tints. This is ideal for use with soft colours to create a distinctly contemporary interior, or with more striking ones to generate contrasts in which the brighter colours stand out. This wood adds a touch of class to all Quattroporte cars, and is available on the Quattroporte S version at no extra cost.







*Vavona* wood has a warm, amber hue. Its grain patterns are curved and almost floral, with a comforting natural look. *Vavona* blends in perfectly with all the warm leather colours in the range.

*Polished Wengé*, with its deep graining and different shades of brown, comes from the tropics. It is a dark, dense wood that projects feelings of warmth and reassurance.

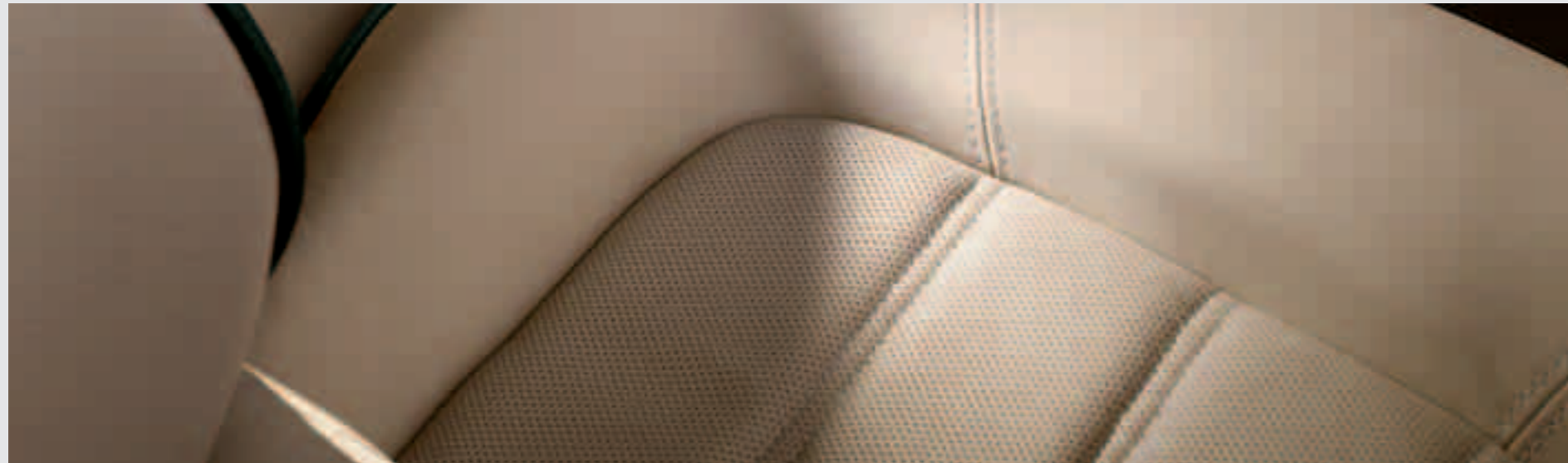
*Blue Laque* is the new alternative to Piano Black. This has been specially introduced to match the Navy Blue leather or to create a fresh and subtle contrast with the other light colours in the range.

Carefully selected for their flawless quality, all the woods undergo a lengthy process that involves hand-crafting techniques as well as the latest preparation and treatment methods. Customers can then personalise their car still further by opting for exquisite inlays to be added to the wood panelling.

The new Quattroporte Sport GT S can be finished with latest-generation materials developed for racing-style, high-performance driving: TitanTex and carbon fibre. TitanTex is an ultra-lightweight aluminium-coated titanium fibre fabric, with a modern, high-tech look, given added prestige by a special processing which produces a shiny finish with a three-dimensional effect. Carbon fibre gives the interior a look with strong associations to the racing world, and provides a firm statement of the Quattroporte Sport GT S's true character.



SABBIA LEATHER



POLTRONA FRAU® LEATHER. Quattroporte customers can choose to have their car upholstered in the finest leather from Poltrona Frau®, a company famous for the quality of its hides and the traditional processing techniques it uses. Its products are magnificent examples of Italian craftsmanship. The Poltrona Frau® leather used for the interior trim of the Quattroporte goes through a rigorous selection process that rejects all but the softest and most tactile of high quality hides. The treatments they then undergo add durability, strength, and practicality to their attractive appearance, whilst hand finishing processes ensure that the leather is soft and snug in winter, yet cool and comfortable in the summer - and help give it that very special feature that makes ageing a factor that actually enhances its appeal. For customers seeking the most extravagant and exclusive leather, Maserati is proud to offer Poltrona Frau® 'Luxury' natural leather. Extraordinarily soft to the touch, it gives the car's occupants a unique feeling of sensuality and refinement. The Poltrona Frau® logo and double stitching bring added cachet to the upholstery, and make the Quattroporte's interior even more luxurious and sophisticated.

Two new types of leather make their debut in the new Quattroporte range: Sabbia, which is natural and very elegant, and Marrone Corniola, a contemporary brown shade with a striking sporty stipple.

MARRONE CORNIOLA LEATHER



QUALITY OF LIFE ON BOARD. The Maserati Quattroporte's navigation and entertainment systems have been completely updated. Customers can now choose between the new Maserati Multimedia System or the optional Bose® Multi Media System.

Developed by Magneti Marelli, the Maserati Multimedia System is truly state-of-the-art, with an on-board computer, satellite navigation system, optional carphone, CD and MP3 player, MP3 music file jukebox, 30 GB hard disk, voice controls, Bluetooth®, and a USB/AUX-in port with USB reader function.

Audio is provided by the Bose® Surround Sound System, which is standard equipment in all versions. This performs magnificently for all onboard, wherever they are seated, because it has been acoustically engineered specifically for the new Quattroporte range.

A 7" high-resolution TFT colour screen in the centre of the dashboard displays the full-map satellite navigation, and information relating to car's radio, CD player, on-board computer, carphone (where fitted), MP3 Jukebox, Bluetooth®, and USB reader functions.

The system is easy to operate via the controls in the centre of the dashboard, whilst the main functions can be accessed more safely when driving by means of the buttons on the multi-functional steering wheel. Voice controls for the audio and satellite navigation systems, plus the carphone, mean that the driver need never look away from the road when operating these features.

The on-board computer displays the trip data: average fuel consumption, journey time, distance travelled, average speed, speed limits, and miles/days before the car's next service.

A Rear Seat Entertainment system is also available as an optional extra. This comprises a central rear screen with DVD player, an auxiliary input for a video games console or other remote devices (e.g. a camcorder), and the facility to listen to the main audio system via headphones.

The central display screen also provides the driver with useful information about the operation and setup of numerous other devices and features found on the car – for example the automatic transmission, the Skyhook suspension, the activation of the MSP, or the existence of icy road surfaces. It also shows the satellite navigation mapping. Via the multifunctional steering wheel, the driver can also operate the car's Bose® Surround Sound System and, if fitted, the optional Bose® Multi Media System.

\*on demand





**BOSE® MULTI MEDIA SYSTEM.** The new Bose® Multi Media System takes the concept of in-car entertainment to new heights. Aside from its unique styling and distinctive user interface characteristics, the Bose® Multi Media System differs from the Quattroporte's standard system in several ways. It features a DVD player, .wav, .wma and .acc file reading, UMusic®, Music Library, display proximity sensors, a special radio tuning system, and special personalisation functions. It also allows for an optional iPod interface and TV tuner.

The display proximity sensors are particularly innovative. The sensors automatically detect that the user is about to touch a particular button, and then enlarge the appropriate information in the centre of the screen. When the hand is moved away, the display returns to its original setting. Another extremely useful innovation is the UMusic®, function, which acts as a virtual DJ by playing the user's favourite tracks as previously memorised by the system. Voice controls for displaying the menu or scrolling through chapters or tracks are also available.

**BOSE® SURROUND SOUND SYSTEM.** The new Maserati Quattroporte range features a 4 x 25 Watt RMS 11-speaker Bose® Surround Sound System with integral equaliser. Bose® has acoustically engineered its system into the Quattroporte so that no matter where you are sitting you will hear concert hall standards of music in terms of depth, clarity and tone. What's more, its built in AudioPilot® technology continually monitors and measures the ambient noise levels within the cabin and adjusts a large number of audio signal parameters – thus the sound quality inside the Quattroporte is always first class.

**AUTOMATIC DUAL-ZONE CLIMATE CONTROL.** The automatic dual-zone climate control system maintains ideal conditions inside the cabin by automatically adjusting the interior temperature and the degree of ventilation in relation to the outdoor temperature, sunlight intensity, and air humidity. In addition, there's a sensor that monitors the incoming air quality and prevents contaminated air or unpleasant smells from entering the car by automatically activating the air recycling function. The system is also fitted with an anti-misting sensor: if the glass temperature drops below the point when the glass surfaces begin to mist up, this automatically cuts in to reduce the humidity content of the air. The concept of maintaining an ideal climate even extends to the rear, where six vents are located - two on the central console, two on the central pillars and two at foot level. This can be further enhanced with an optional rear climate control console that allows the passengers in the back to set their own ventilation rates and adjust the distribution of air flow through the various outlets independently.

**ADDITIONAL ON-BOARD EQUIPMENT.** Other electronic features installed on the Quattroporte as standard include the Light Sensor that monitors the amount of light in the surrounding environment and then switches the headlights on and off accordingly, and the Rain Sensor that detects the existence of rain on the windscreen, and then activates the wipers and adjusts their speed in relation to its intensity. In addition, all Quattroporte models come with Cruise Control, which maintains a set cruising speed with no need to keep pressing down on the accelerator pedal, an anti-theft system that comprises an anti-lifting sensor, volumetric ultrasound sensors, perimeter protection and an alarm hidden in the engine compartment, plus automatic door locking when the engine is started. Tyre pressure sensors, electrochromatic interior and exterior rearview mirrors, and front parking sensors are also available as optional extras.





**PERSONALIZATION.** The “Officine Alfieri Maserati” personalization programme has been developed to enable customers to build themselves a Quattroporte that is totally unique and tailored to their individual needs and preferences. The options available fall into four main categories: colours, on-board electronics, interiors, and driving dynamics.

**COLOURS.** As well as the colours of the car’s exterior (11 standard colours, plus a further 8 special paints) and its interior (10 shades of leather), customers can choose the colour of the dashboard and rear shelf (10 variants), steering wheel (10 variants), stitching (13 colours of thread), roof lining (4 variants), carpets (6 variants) and piping (11 colours). Different coloured brake callipers are also available – in red, silver, titanium, dark blue, and yellow.





**INTERIORS.** The interior of the Quattroporte can be appointed in numerous different ways. For a start there are six different types of fine wood: Rosewood, Burr Walnut with Bois de Rose inlays, Mahogany with Bois de Rose inlays, Polished Wengé (also available with inlays in Bois de Rose), Starwood, or Vavona. Alternatively there are interior finishes in Piano Black or Blue Laque. Heated front and rear seats are available, along with the full Comfort Pack that provides heating, air ventilation and massage. The Alcantara roof lining can be ordered in Beige, Pearl Beige, Grey or Black, whilst the upper dashboard, rear shelf, and stitching is available in many different colours. The wood and leather steering wheel comes in all the types of wood and Piano Black finish, whilst for the ultimate in opulence there's the Luxury version of the Poltrona Frau® Natural Leather. On the new Quattroporte Sport GT S, as well as the standard TitanTex and optional carbon fibre mouldings, customers still have the option of Alcantara for the roof lining, in 5 colours: Beige, Pearl Beige, Grey, Blu Trofeo or Black. All the wood finishes in the Maserati range are also available for this decidedly more sporty model, at no extra charge.

**ON-BOARD ELECTRONICS.** Amongst the many high-tech features that further enhance the quality of life onboard, there's the Rear Seat Entertainment package that includes a central rear screen and a DVD player, an electric sunroof, front parking sensors, and electrochromatic exterior and interior mirrors.

**DRIVING DYNAMICS.** Various options are available to emphasise the Quattroporte's sporty character and intensify the driving experience. These include special ball-polished 19" racing wheels, 7-spoke 20" alloy wheels, 19" Run Flat tyres with pressure sensors, and 'Active Shifting' gearshift paddles that are integral with the steering wheel. Two new types of 20" rims have been introduced for the Quattroporte Sport GT S: optional Multi-Trident light aluminium alloy rims, and 7-spoke light alloy rims with "Dark Chrome" finish.

**HANDLING PACK.** Available on the new Quattroporte, the Handling Pack enhances the car's sporty nature. This includes 19" V-Style wheels, a recalibrated suspension with a more sporty set-up, Dual-Cast 360 mm front disc brakes, red brake callipers, and the Active Shifting system with gearshift paddles on the steering-wheel.

**EXECUTIVE GT PACK.** Available on the Quattroporte and Quattroporte S, the Executive GT Pack includes fully electric rear seats with heating, air ventilation and massage, rear climate control, rear side blinds, wooden 'airline type' rear tables, and an Alcantara roof lining.



PAINT COLOURS



Bianco Eldorado    Grigio Touring    Grigio Alfieri    Grigio Granito    Blu Nettuno



Blu Oceano    Bordeaux Pontevecchio    Nero Carbonio    Nero    Verde Deep Emerald

SPECIAL PAINT



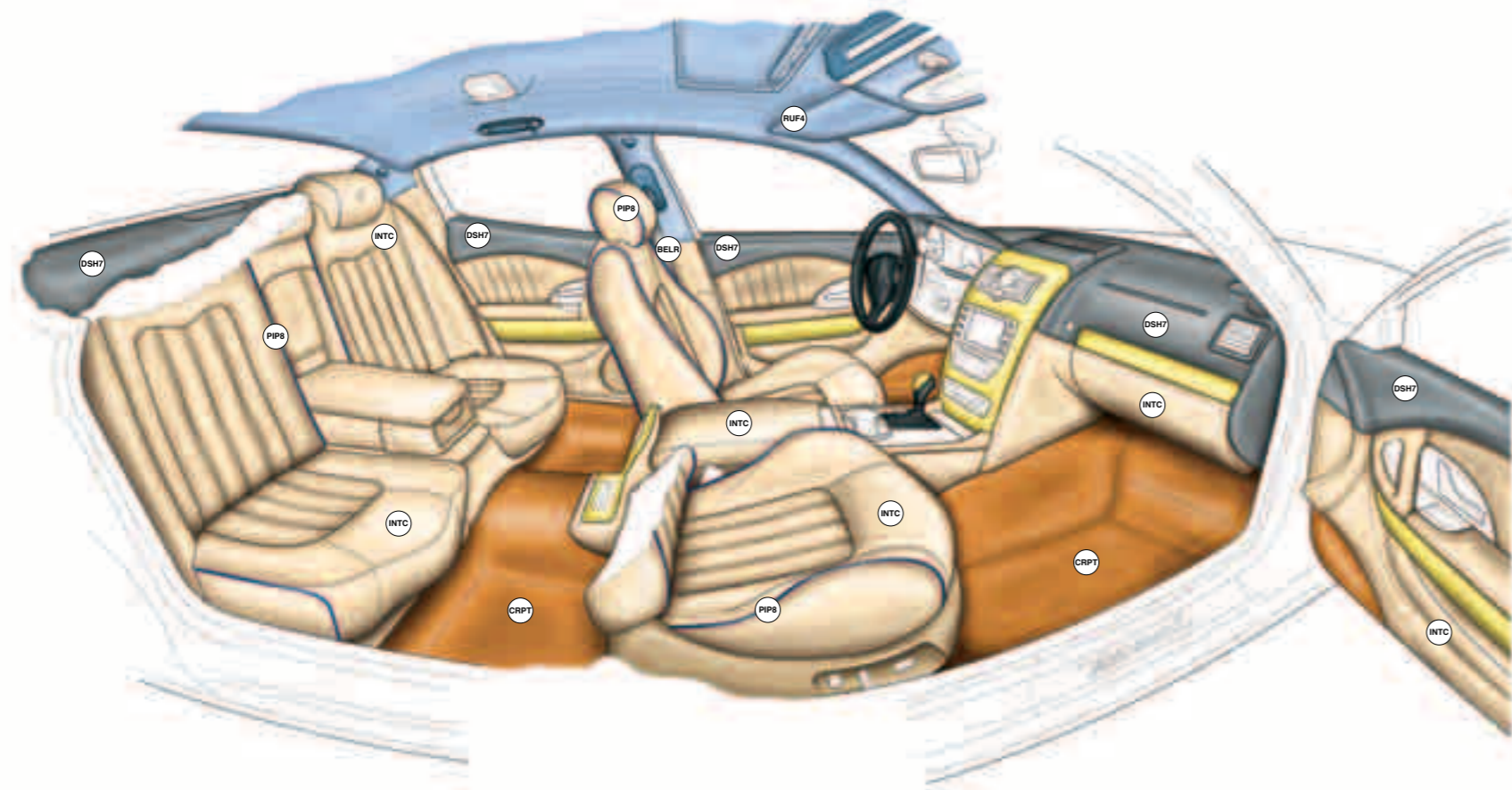
Bianco Fuji    Giallo Granturismo    Rosso Mondiale    Grigio Nuvolari    Grigio Palladio



Argento Luna    Blu Mediterraneo    Blu Sebring    Blu Malagò



QUATTROPORTE



-  COLOUR UPON REQUEST FOR MAIN INTERIORS AREAS
-  STANDARD STEERING WHEEL AND GEAR KNOB IN BLACK LEATHER; COLOUR UPON REQUEST AT EXTRA COST  
 REAR SHELF, UPPER AND LOWER DASHBOARD AREAS; STANDARD AS INTERIOR COMBINATIONS SCHEME - COLOUR UPON REQUEST AT EXTRA COST
-  COLOUR UPON REQUEST FOR INTERIOR CARPET AT NO EXTRA COST  
 COLOUR UPON REQUEST FOR HEADLINER CLOTH AT NO EXTRA COST
-  COLOUR UPON REQUEST FOR SEAT BELTS AT NO EXTRA COST  
 STANDARD PIPING COLOUR AS INTC - COLOUR UPON REQUEST AT EXTRA COST

LEATHER COLOURS

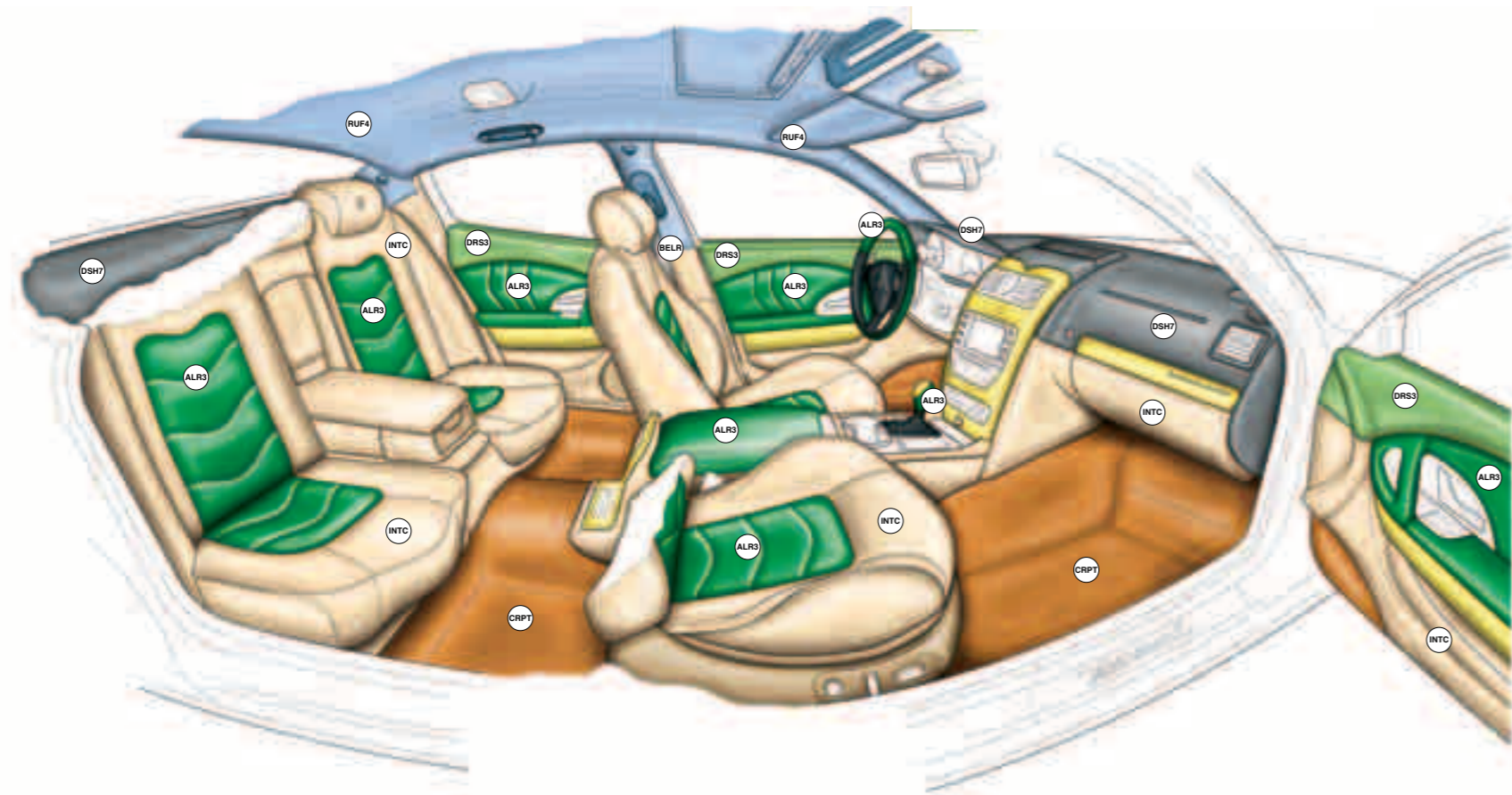
					
Avorio	Sabbia	Cuoio	Marrone Corniola	Grigio Ghiaccio	Starwood (Quattroporte)
					
Grigio Medio	Blu Navy	Rosso Corallo	Bordeaux	Nero	Wengè Polished (Quattroporte S)

PIPING

STANDARD INTERIOR TRIM

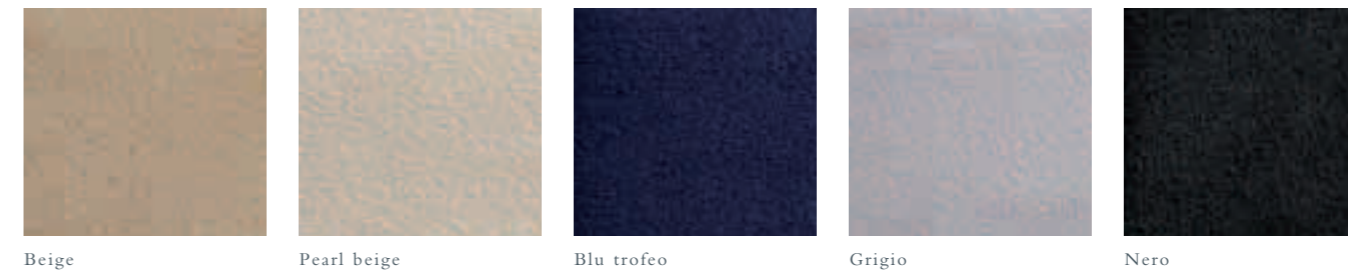
QUATTROPORTE SPORT GT S



STANDARD AND OPTIONAL EQUIPMENT

-  COLOUR UPON REQUEST FOR MAIN INTERIORS AREAS
-  STANDARD STEERING WHEEL AND GEARSHIFTIN LEATHER BOOT (RIM NOT INCLUDED); IN BLACK LEATHER, COLOUR UPON REQUEST AT EXTRA COST
-  COLOUR UPON REQUEST FOR INTERIOR CARPET AT NO EXTRA COST
-  COLOUR UPON REQUEST FOR SEAT BELTS AT NO COST
-  TITANTEX AREAS
-  UPPER DOOR PANEL: STANDARD AS INTERIOR COMBINATIONS SCHEME, COLOUR UPON REQUEST AT EXTRA COST
-  COLOUR UPON REQUEST FOR ALCANTARA AREAS AT NO COST
-  REAR SHELF, UPPER DASHBOARD: AREAS STANDARD AS INTERIOR COMBINATIONS SCHEME, COLOUR UPON REQUEST AT EXTRA COST
-  COLOUR UPON REQUEST FOR HEADLINER CLOTH AT NO COST

ALCANTARA COLOURS

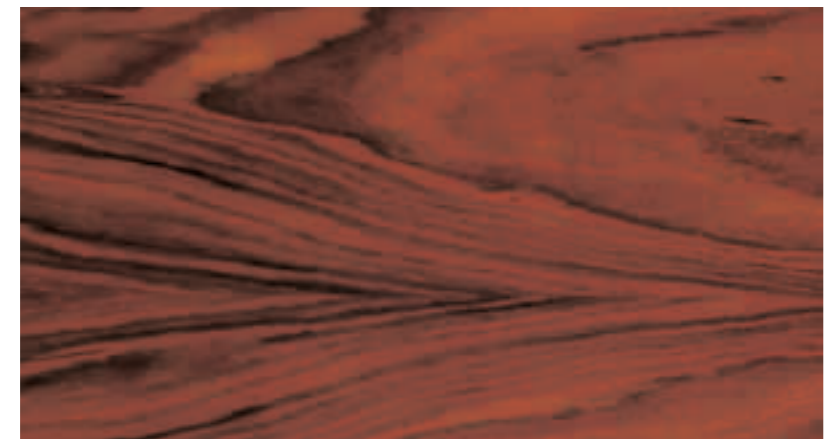


LEATHER COLOURS

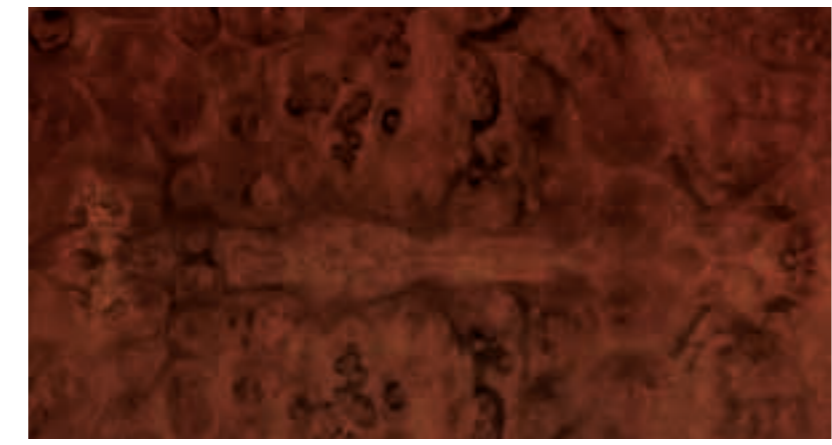


INTERIOR TRIM

INTERIOR WOOD TRIM



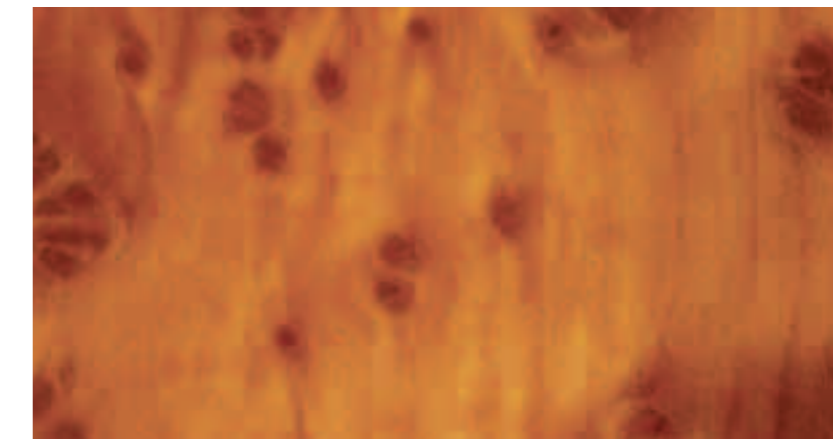
Rosewood



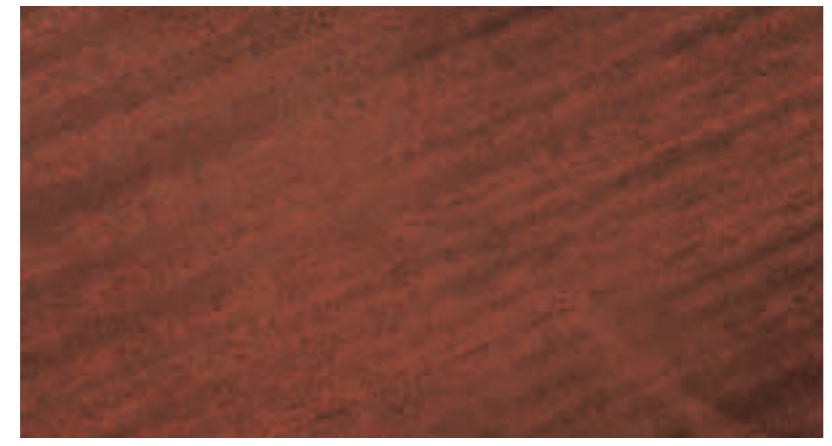
Walnut Briarwood



Wengè Polished



Vavona



Mahogany



Starwood

INTERIOR LAQUERED TRIM



Blu Laque



Black Piano

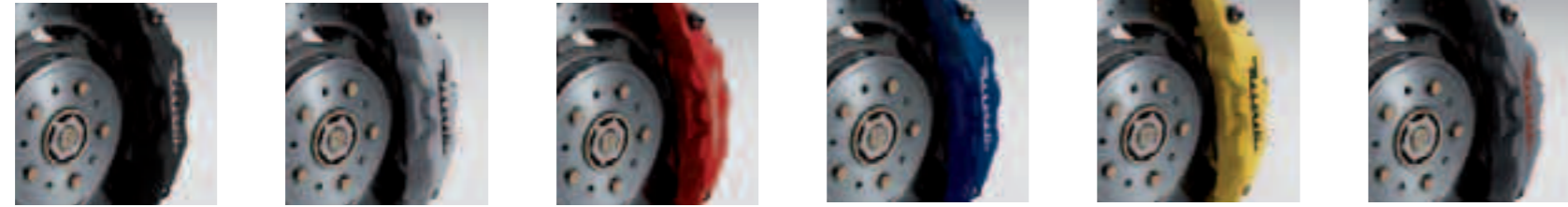
WHEELS AND BRAKES



Light alloy wheels 18" (8.5J x 18" front; 10.5J x 18" rear)    Light alloy wheels - 7 spokes "V" Style (8.5J x 19" front; 10.5J x 19" rear)    Light alloy wheels - 9 spokes Ball Polished, (8.5J x 19" front; 10.5J x 19" rear)    Light alloy wheels - 7 spokes (8.5J x 20" front; 10.5J x 20" rear)    Light alloy wheels - 7 spokes Dark Chrome (8.5J x 19" front; 10.5J x 19" rear)    Light alloy wheels Multi Trident (8.5J x 20" front; 10.5J x 20" rear)    Light alloy wheels Multi Trident, Dark Chrome (8.5J x 20" front; 10.5J x 20" rear)



Brake calipers painted Black Ø 330    Brake calipers painted Silver Ø 330    Brake calipers painted Red Ø 330    Brake calipers painted Blue Ø 330    Brake calipers painted Yellow Ø 330    Brake calipers painted Titanium Ø 330



Brake calipers painted Black Ø 360    Brake calipers painted Silver Ø 360    Brake calipers painted Red Ø 360    Brake calipers painted Blue Ø 360    Brake calipers painted Yellow Ø 360    Brake calipers painted Titanium Ø 360

WHEELS AND CHASSIS

	QUATTROPORTE	QUATTROPORTE S	QUATTROPORTE SPORT GT S
18" alloy wheels (8.5J x 18" front; 10.5J x 18" rear)	●	X	X
19" V-Style alloy wheels (8.5J x 19" front; 10.5J x 19" rear)	○	●	○
19" 9 spoke ball-polished, alloy wheels (8.5J x 19" front; 10.5J x 19" rear)	○	○	X
20" 7 spoke alloy wheels (8.5J x 20" front; 10.5J x 20" rear)	○	○	○
20" 7 spoke Dark Chrome alloy wheels (8.5J x 20" front; 10.5J x 20" rear)	X	X	○
20" Silver Multi-trident alloy wheels (8.5J x 20" front; 10.5J x 20" rear)	X	X	●
20" Dark Chrome Multi-Trident alloy wheels (8.5J x 20" front; 10.5J x 20" rear)	X	X	○
17" space saver spare wheel	○	X	X
18" space saver spare wheel	X	○	○
19" run-flat tyres (includes TPMS)	○	○	X
330 mm brake discs - front and rear	●	X	X
360 mm cross-drilled front brake discs, 330 mm cross-drilled rear brake discs	X	●	●
Brake calipers painted Black	●	●	○
Brake calipers painted Red	○	○	●
Brake calipers painted Blue - Yellow - Silver - Titanium	○	○	○
Electronic Parking Brake (EPB)	●	●	●
Hill-holder	●	●	●
Speed sensitive power-assisted steering	●	●	●
Single rate damping suspension (comfort set-up)	●	X	X
Single rate damping suspension (Sport set-up)	X	X	●
Skyhook - electronically variable active damping system	○	●	X

SAFETY

	QUATTROPORTE	QUATTROPORTE S	QUATTROPORTE SPORT GT S
Bi-xenon headlights with headlight washing system	●	●	●
Adaptative headlights	●	●	●
Daytime Running Lights function (DRL)	●	●	●
Automatic headlamp activation	●	●	●
Front and rear indicators with high visibility LED lamps	●	●	●
Foglamps	●	●	●
Taillights with high visibility LED lamps	●	●	●
Central stop light	●	●	●
Parking light	●	●	●

STANDARD ● OPTIONAL ○ NOT AVAILABLE X

SAFETY	QUATTROPORTE	QUATTROPORTE S	QUATTROPORTE SPORT GT S
Air-bag system: dual stage front bags, Low Risk Deployment for the front passenger bags. 4 window airbags (front and rear) - 2 front side airbags	●	●	●
New generation front passenger air-bag	●	●	●
Front and rear seat belts with pre-tensions and load limiters	●	●	●
Child seat ISOFIX attachments	●	●	●
Maserati Stability Program (MSP) - includes:	●	●	●
- stability control (MSP)			
- traction control (ASR)			
- anti lock braking system (ABS)			
- electronic brake distribution (EBD)			
- engine torque control (MSR)			
Tyre Pressure Monitoring System (TPMS)	○	○	○
Tyre sealing compound and electric air compressor	●	●	●
EXTERIOR EQUIPMENT	QUATTROPORTE	QUATTROPORTE S	QUATTROPORTE SPORT GT S
Metallic paintwork	○	○	○
Special colour	○	○	○
Bianco Fuji pearlescent colour	○	○	○
Headlights - Chrome look	●	●	✘
Headlights - dark chrome interior finishing INOX	✘	✘	●
Chromeline exterior trim (windows + door handles)	●	●	○
Shadow line	✘	✘	●
Door mirrors - electrically operated, folding and heated	●	●	●
Side vents	●	●	●
Electric opening assist for boot lid and doors	●	●	●
Electric closing assist for boot lid	●	●	●
Power sunroof	○	○	○
Dark tinted glass	○	○	○
Saetta logo on C-pillar	●	●	●
Maserati designation - rear	●	●	●
Rear parking sensors	●	●	●
Front parking sensors	○	○	○
Twin, dual pipe exhaust system in chrome-plated stainless steel	●	●	✘
Twin pipe exhaust system	✘	✘	●
Car cover - Quattroporte - Quattroporte S - Quattroporte Sport GT S	○	○	○

STANDARD ● OPTIONAL ○ NOT AVAILABLE ✘

INTERIOR	QUATTROPORTE	QUATTROPORTE S	QUATTROPORTE SPORT GT S
Aluminium sill protectors with Maserati designation	●	●	●
"Quattroporte" badge on dashboard	●	✘	✘
"Quattroporte S" badge on dashboard	✘	●	✘
"Quattroporte Sport GT S" badge on dashboard	✘	✘	●
Instrument dials in Maserati Blu colour with white graphics	●	●	●
Dashboard-mounted, Maserati-design clock	●	●	●
Three-spoke sports steering wheel multifunction	●	●	●
Maserati "Active Shifting" (shift paddles)	○	○	●
Sport mode setting affecting gear change, accelerator response and MSP system (plus Skyhook suspension setting when fitted)	●	●	●
Steering column with power height and reach adjustments	●	●	●
Electrically adjustable front seats with 14 settings and 3 memory positions on driver's side	●	●	●
Easy entry/exit system	●	●	●
Heated front seats	○	○	○
Comfort pack front seats (heating, ventilation, massage)	○	○	○
Front passenger seat electrically adjustable from the rear	●	●	●
Fixed rear seats	●	●	●
Independently electrically adjustable rear seats	○	○	○
Heated rear seats	○	○	○
Comfort pack rear seats (electric, heating, ventilation, massage)	○	○	○
Electric sunshade for the rear window	●	●	●
Clima pack (manual rear side window sunblinds, rear climate controls)	○	○	○
Laminated glass	●	●	●
Trident logo embossed on head restraints - front and rear	●	●	●
Folding front armrest with illuminated and cooled storage compartment	●	●	●
Folding rear armrest	●	●	●
Front double cup-holders	●	●	●
Rear double cup-holders	●	●	●
Lockable, illuminated glove compartment	●	●	●
Storage compartment in centre tunnel	●	●	●
Seatback pockets	●	●	●
Luxury natural leather	○	○	✘
Two rear air outlets	●	●	●
Luggage set	○	○	○

STANDARD ● OPTIONAL ○ NOT AVAILABLE ✘

UPHOLSTERY AND TRIMS	QUATTROPORTE	QUATTROPORTE S	QUATTROPORTE SPORT GT S
Fabric rooflining	●	●	●
Alcantara rooflining	○	○	○
Three-spoke, sports multifunction steering wheel in leather	●	●	●
Three-spoke, sports multifunction steering wheel in coloured leather	○	○	○
Poltrona Frau® leather upholstery	●	●	○
Poltrona Frau® and Alcantara® leather upholstery	X	X	●
Star Wood trim on selected interior details	●	○	○
Polished wengè wood on selected interior details	○	●	○
Vavona wood on selected interior details	○	○	○
Rosewood trim on selected interior details	○	○	○
Walnut Briarwood trim with rosewood inlay on selected interior details	○	○	○
Mahogany trim with rosewood inlay on selected interior details	○	○	○
Polished wengè trim with rosewood inlay on selected interior details	○	○	○
Blue Laque or Black Piano finishing on selected interior details	○	○	○
TitanTex finishing on selected interior details	X	X	●
Carbon fibre finishing on selected interior details	X	X	○
Steering wheel and gear knob in coloured leather	○	○	○
Steering wheel in wood trim and black leather (Star Wood, Wengè Polished, Vavona, Rosewood, Walnut Briarwood, Mahogany, Black Piano)	○	○	○
Steering wheel in wood trim and coloured leather (Star Wood, Wengè Polished, Vavona, Rosewood, Walnut Briarwood, Mahogany, Black Piano)	○	○	○
Steering wheel and gear knob in Alcantara® and coloured leather	X	X	○
Rear tables in wood trim (Star Wood, Wengè Polished, Vavona, Rosewood, Walnut Briarwood, Mahogany, Black Piano, Blu Laque)	○	○	○
Piping colour upon request	○	○	○
Stitching colour upon request - steering wheel and gear knob excluded	○	○	○
Dashboard and rear shelf in coloured leather	○	○	○
Coloured edges for carpets upon request	○	○	○

STANDARD ● OPTIONAL ○ NOT AVAILABLE X

ELECTRONIC DEVICES	QUATTROPORTE	QUATTROPORTE S	QUATTROPORTE SPORT GT S
Electronic immobiliser	●	●	●
Alarm system (perimeter and volumetric sensing, anti-lift device, electronic immobiliser)	●	●	●
Remote key (on/off alarm system, lock/unlock doors, unlock boot lid)	●	●	●
Automatically dimming rearview interior and exterior mirrors	○	○	○
Cruise Control	●	●	●
HomeLink - Garage door opener	○	○	○
Dual zone automatic climate control with two rear air outlets in centre tunnel	●	●	●
Demist sensor	●	●	●
Bose™ Surround Sound System	●	●	●
Maserati Multi Media System with 7" in dashboard screen - includes navigation system, RDS tuner, single CD player, 30GB hard disc drive, voice control, USB port + Aux-In plug	●	●	●
Bose™ Infotainment system	○	○	○
Multifunction steering wheel	●	●	●
Bluetooth®	●	●	●
Rain sensor	●	●	●
Rear Seats Entertainment - includes: 7" LCD, DVD, AUX-in plug	○	○	○
Rear Seats Entertainment - includes: analogic TV tuner, 7" LCD, DVD, AUX-in plug	○	○	○
iPod interface (option linked to Bose™ Infotainment system)	○	○	○
TV tuner (option linked to Bose™ Infotainment system)	○	○	○

PACKAGES	QUATTROPORTE	QUATTROPORTE S	QUATTROPORTE SPORT GT S
Executive GT: exterior: 19" polished wheels, chromed side vents, exterior badge. Interior: rear side blinds, rear climate controls, rear power seats, rear comfort pack, Alcantara headlining, wood-rimmed steering wheel, wood rear tables)	○	○	X
Handling: exterior: 19" Wheel rims, 360 mm cross-drilled brake discs, Red brake calipers, Single-rate damping suspension (sport set-up), Active Shifting system with gearshift paddles. With Handling 4.2 pack is possible to order WH18	○	X	X

STANDARD ● OPTIONAL ○ NOT AVAILABLE X

TECHNICAL SPECIFICATIONS

QUATTROPORTE QUATTROPORTE S QUATTROPORTE SPORT GT S

QUATTROPORTE QUATTROPORTE S QUATTROPORTE SPORT GT S

ENGINE

Displacement	4.244 cm <sup>3</sup>	4.691 cm <sup>3</sup>	4.691 cm <sup>3</sup>
Bore	92 mm	94 mm	94 mm
Stroke	79,8 mm	84,5 mm	85 mm
Compression ratio	11:1	11:1	11:1
Max power output	295 kW (400 CV)	317 kW (430 CV)	323 kW (440 CV)
Max power output revs	7.000 rpm	7.000 rpm	7.000 rpm
Max torque output	460 Nm (46 kgm)	490 Nm (49,5 kgm)	490 Nm (49,5 kgm)
Max torque output revs	4.750 rpm	4.750 rpm	4.750 rpm
Max torque	7.250 rpm	7.200 rpm	7.200 rpm

PERFORMANCE

Maximum speed	270 km/h (168 mph)	280 km/h	285 km/h
0 to 100 km/h acceleration	5,6 s	5,4 s	5,1 s*
0 to 400 metres acceleration	14,2 s	13,7 s	13,3s
0 to 1000 metres acceleration	25,2 s	24,7 s	24,1 s
	218 km/h	220 km/h	225 km/h
80 to 120 Km/h increase	4,1 s	3,7 s	3,7 s
breaking distance from 100 to 0 Km/h	36 m	35 m	35 m

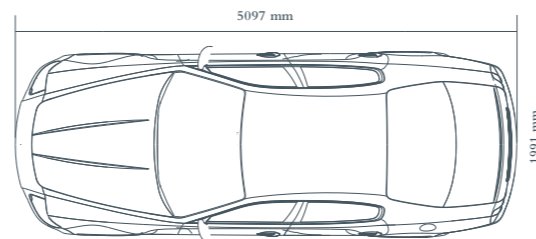
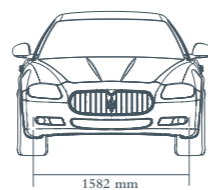
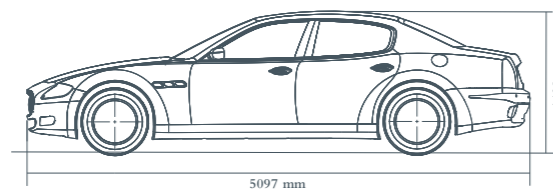
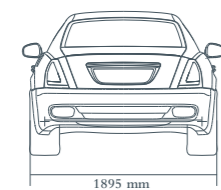
\*with MC START STRATEGY ACTIVATED

CONSUMPTIONS AND EMISSIONS

Fuel consumption (urban cycle)	21,9 (l/100 km)	23,9 (l/100 km)	23,9 (l/100 km)
Fuel consumption (extra urban cycle)	10,5 (l/100 km)	10,9 (l/100 km)	10,9 (l/100 km)
Fuel consumption (combined cycle)	14,7 (l/100 km)	15,7 (l/100 km)	15,7 (l/100 km)
CO <sub>2</sub> emissions (combined cycle)	345 (g/km)	365 (g/km)	365 (g/km)

DIMENSIONS AND WEIGHTS

Length	5.097 mm	5.097 mm	5.097 mm
Width	1.895 mm	1.895 mm	1.895 mm
Width (with side mirrors)	1.991 mm	1.991 mm	1.991 mm
Width (without side mirrors)	1.885 mm	1.885 mm	1.885 mm
Height	1.438 mm	1.438 mm	1.423 mm
Wheelbase	3.064 mm	3.064 mm	3.064 mm
Front track	1.582 mm	1.582 mm	1.582 mm
Rear track	1.595 mm	1.595 mm	1.595 mm
Front rims	8,5j x 18"	8,5j x 19"	8,5j x 20"
Rear rims	10,5j x 18"	10,5j x 19"	10,5j x 20"
Front tyres	245/45 ZR18"	245/40 ZR19"	245/35 ZR20"
Rear tyres	285/40 ZR18"	285/35 ZR19"	295/30 ZR20"
Front overhang	891 mm	891 mm	891 mm
Rear overhang	1.142 mm	1.142 mm	1.142 mm
Turning circle	12,3 m	12,3 m	12,3 m
Boot capacity	450 l	450 l	450 l
Fuel tank capacity	90 l	90 l	90 l
Dry weight	1.880 kg	1.880 kg	1.880 kg
Kerb weight	1.990 kg	1.990 kg	1.990 kg
Kerb weight + driver	2.065 kg	2.065 kg	2.065 kg
Full load weight	2.365 kg	2.365 kg	2.365 kg
Gross vehicle weight	2.400 kg	2.400 kg	2.400 kg
Weight distribution	49% front; 51% rear	49% front; 51% rear	49% front; 51% rear





## MASERATI SERVICES.

**INDIVIDUAL TESTING.** Following an extensive testing programme and minute examination within the factory, each new Quattroporte is put through its paces by professional Maserati drivers in a thorough, 50 kilometre test drive on challenging roads.

**FACTORY COLLECTION.** Taking delivery of a Maserati Quattroporte should be a unique and special occasion. To this end, the company offers its customers the opportunity of collecting their car themselves from the Maserati works in Modena. A tour of the production line, and formal handover in the stunning, Ron Arad-designed showroom make the customer's introduction to Maserati ownership a truly unforgettable event.







QUATTROPORTE MAINTENANCE PROGRAMME\*. The Maserati Quattroporte offers an optional special maintenance programme that includes the first three services. Full details of these services are outlined in the Maserati Use and Maintenance Manual: the first service comes at 12,000 miles or 2 years, and subsequently every 12,000 miles or 2 years from the date of the last service - up to a maximum of 36 months or 36,000 miles from the date when the vehicle was first registered. All checks and servicing are carried out free of charge by Maserati dealers' specialist technicians, and only genuine Maserati parts are used.

3 YEAR WARRANTY AND ROADSIDE ASSISTANCE. All Maserati cars come with a three year unlimited mileage warranty, and three year Maserati Roadside Assistance, as well. This is a full roadside assistance service, covering the UK and Europe\*\*.

\* The maintenance programme is not available in Canada and the United States.

\*\* The countries covered by the Maserati Roadside Assistance service are: Andorra, Austria, Belgium, Czech Republic, Denmark, Finland, France, Germany, Holland, Hungary, Greece, Italy (including Republic of San Marino and Vatican City), Liechtenstein, Luxembourg, Monaco, Norway, Poland, Portugal, Rumania, Slovenia, Spain, Sweden, Switzerland, Turkey, and the United Kingdom.



**EXTENDED WARRANTY.** All Maserati owners have the option of extending their car's warranty for a further 12 months to a four year unlimited mileage warranty\*. The extension must be activated at least 30 days before the original warranty expires, and at this time the car's mileage must not exceed 56,000 miles. For details of the Maserati Extended Warranty programme, please contact your nearest Maserati dealer.

**TRIDENT DISCOVERIES (MASERATI'S PRE-OWNED CAR PROGRAMME\*\*).** Maserati can source pre-owned cars for its customers and provide peace of mind with its 'Trident Discoveries' programme. All cars in the scheme are under five years old, and will have covered less than 56,000 miles\*\*. After a thorough inspection by Maserati-trained technicians, and the rectification of any faults, 'Trident Discoveries' pre-owned cars are guaranteed for one year with unlimited mileage.

\* - In Canada and the United States, the warranty extension refers to the fifth year, and the cover is limited.

\*\* - The 'Trident Discoveries' programme is applicable to the following models: Maserati Coupé and Spyder not more than 5 years old and under 56,000 miles; Maserati 3200 GT and Quattroporte Evoluzione not more than 5 years old and under 50,000 miles. For more information, consult your nearest Maserati dealer or visit the website: [www.maseratipreowned.com](http://www.maseratipreowned.com)

**TRIDENT DISCOVERIES PLUS.** This exclusive programme, developed for pre-owned Maseratis and only available from authorised dealerships, guarantees the very best Quattroportes for one year with no mileage restrictions. To qualify for Trident Discoveries Plus, the vehicle is subjected to 138 stringent checks on its bodywork and mechanics.

**MASERATI WEBSITE AND CAR CONFIGURATOR.** Due to the huge number of ways in which the Quattroporte can be personalised, Maserati has developed a very special configuration website: [www.configurator.maserati.com](http://www.configurator.maserati.com). Visitors to this site can configure their chosen model, and then view every mechanical detail inside thanks to its innovative 'X-Ray' viewing facility. More information about Maserati, its cars and services can be found on the official website: [www.maserati.com](http://www.maserati.com).



FACTORY TOUR\*. For the ardent Maserati enthusiast who wants to discover more about the marque and how the cars are designed and built, a factory tour of the Modena plant can be arranged.

THE MASERATI EXPERIENCE\*\*. For those wishing to combine their factory visit with a little more insight into the company's home city of Modena, Maserati has the perfect solution. Lasting either one or two days, the Maserati Experience enables you to get to know the world of Maserati at first-hand via a guided tour that allows you to discover Modena, its culture, its history and its fine food.

You can tailor your Maserati Experience to your own personal tastes and interests by combining a variety of activities:

- *Visit to the Panini Museum and/or Stanguellini Museum (famous motor museums)*
- *Guided tour of the town*
- *Guided tour of a traditional balsamic vinegar manufacturer, with tasting*
- *Guided tour of a winery, with tasting of local wines*
- *Cooking school*
- *Day at the Modena Golf & Country Club*
- *And much, much more.*

\* Tours are by appointment only, and can be arranged through Maserati dealerships. For more information please contact us at [maseratiexperience@maserati.com](mailto:maseratiexperience@maserati.com)

\*\* Maserati Experience tours are by appointment only, and can be arranged through Maserati dealerships. For more information please contact us at [maseratiexperience@maserati.com](mailto:maseratiexperience@maserati.com)

THE MASERATI COLLECTION. The Maserati Collection of quality leisurewear, goods and branded merchandise has been specially created for those who share the Maserati passion, and who seek to associate with the illustrious marque. Maserati Collection items are available from all Maserati Dealers, and from the recently opened Maserati Store at the Maserati showroom in Modena. Alternatively all the articles in the collection can be purchased online at [www.maseratistore.com](http://www.maseratistore.com) and shipped directly to your home.



**MASERATI CLUB.** Joining the exclusive Maserati Club means sharing thrills and experiences with other Maserati owners, and being invited to take part in special motoring events all over the world. Drivers with cars from every era can enjoy the pleasure of driving their Maseratis in a calendar of events constructed exclusively for Maserati Club members. The Maserati Club provides the link between the past, present and future of the company. It is run by individuals who have made a major contribution to the growth and promotion of Maserati across the decades, starting with the President, Maria Teresa de Filippis, the first ever female Formula 1 driver. For more information, access [www.maseraticlub.com](http://www.maseraticlub.com)

**MASTER MASERATI DRIVING COURSES.** It is perhaps the ultimate driving experience: taking to the racetrack in a race-tuned Maserati. A Master Maserati Driving Course places you behind the wheel of various different Maserati models, so that you can learn about performance driving and other techniques that will enable you to fully appreciate your own Maserati's performance, and improve your driving skills. The courses take place at the Varano de' Melegari Circuit, near Parma - a demanding circuit that puts even the best drivers to the test. It is fully equipped with the latest driving instruction equipment, and the courses are run by ex-Formula 1 driver, Ivan Capelli, who is ably assisted by a highly experienced team of professional instructor-drivers. There are two types of Master Maserati Driving Course:

#### *MASTER GT*

An all-inclusive two-day course, spent at the wheel of various different Maseratis. It is an intensive training programme that comprises a number of exciting and dynamic sessions including bend trajectory technique, acquisition and analysis of Formula One type telemetry data, and driving with a pace-car. In addition, you are taught how to control the car in different simulated road conditions, e.g. quick direction changes, skid situations, and various braking techniques.

#### *MASTER HIGH PERFORMANCE*

The Master HP Maserati represents the highest evolution of driving technique concepts developed during the previous GT program. The course, designed to offer a highly professional and technically advanced service, provides the unique opportunity to master the world of Maserati GranTurismo, testing high performance Maserati models on the Varano de' Melegari track, through a highly personalised and specialised program that combines driver satisfaction and technique.

For information and registration, please contact your local official Maserati dealer or: tel. +39 0525 55 11 38 | [info@mastergt.it](mailto:info@mastergt.it) | fax: +39 0525 55 11 40 | [www.maserati.com](http://www.maserati.com)





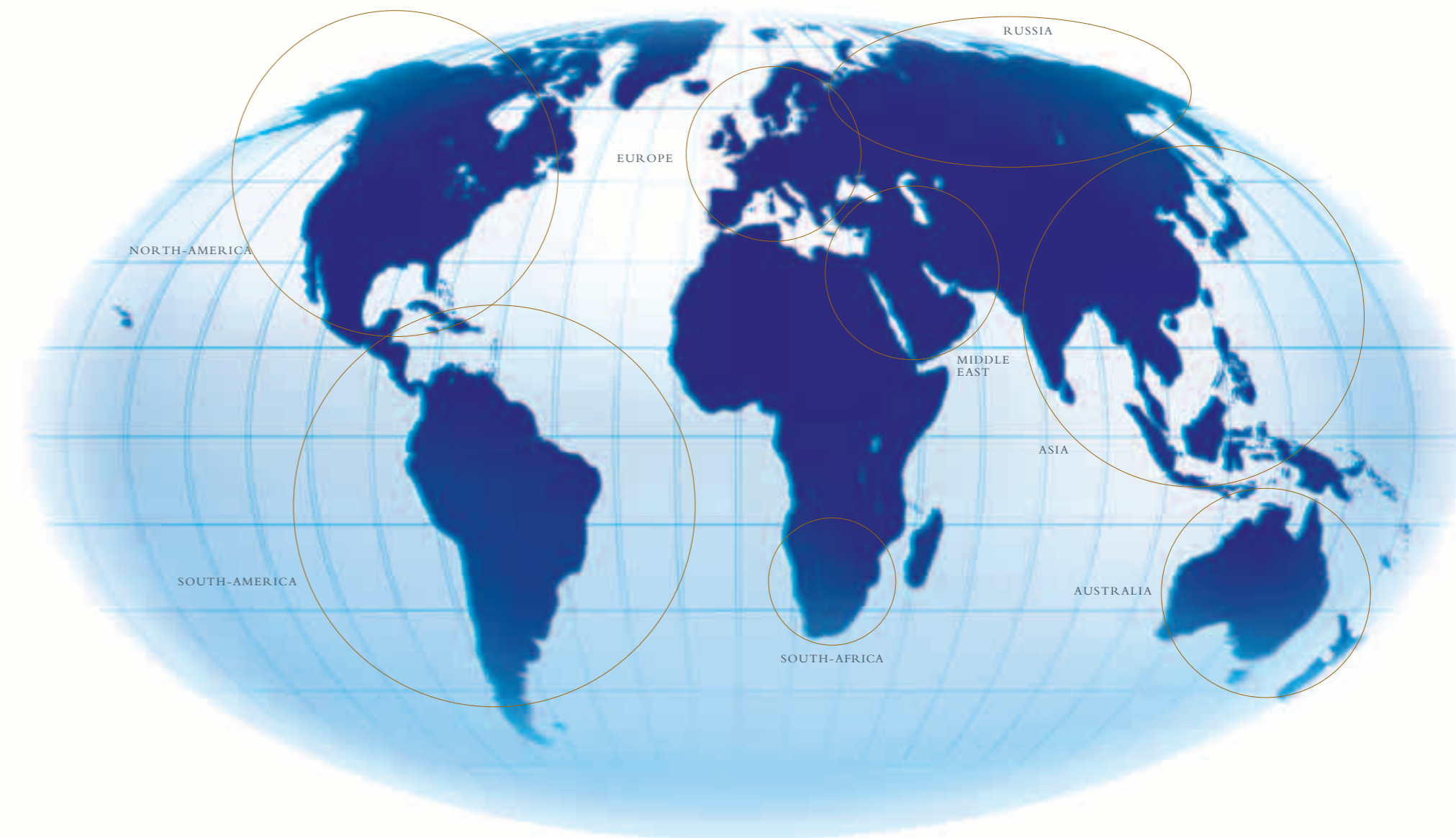
**ORIGINAL MASERATI ACCESSORIES.** Especially designed to address widely different needs original Maserati accessories represent the perfect combination of design and functionality, complete with a guarantee of the highest quality, a characteristic that has always been associated with our brand.

The range of original accessories includes *ad hoc* items designed to enhance the elegance and sporty appeal of Maserati models.

Exterior variations, for example, coloured front grilles or brake callipers; interior finishings, such as carpet overlay kits and under-door moulding covers; components associated with dynamic performance with a wide choice of alloy rims and spoilers; car care accessories such as car covers, leather care kits, battery chargers and satellite anti-theft system: these are just some of the many items available.

## MASERATI ACROSS THE WORLD

Germany  
Great Britain  
Italy  
Switzerland  
France  
Montecarlo  
Austria  
Spain  
Holland  
Belgium  
Denmark  
Luxemburg  
Greece  
Portugal  
Sweden  
Finland  
Romania  
Czech Rep.  
Hungary  
Slovenia  
Ukraine  
Turkey  
Latvia  
Russia  
Japan  
Australia  
Korea  
New Zealand  
Singapore  
Philippines  
Hong Kong  
China  
Indonesia  
Malaysia  
Thailand  
Oman  
Kuwait  
Bahrain  
Qatar  
Saudi Arabia  
U.A.E.  
Lebanon  
South Africa  
Egitto  
Brasil  
Costarica  
El Salvador  
Guatemala  
Argentina  
Mexico  
Puerto Rico  
Venezuela  
Chile  
Panama  
USA  
Canada



## MASERATI CONTACT CENTRE:

Italy - 800 008 008 • Switzerland (German) - 0800 837 100 • Switzerland (French) - 0800 837 200 • Switzerland (Italian) - 0800 837 300 • Germany - 0800 810 80 80 • Sweden - 020 798 000  
Norway - 800 180 88 • Finland 0800 110 808 • Austria - 0800 281 888 • France - 0800 908 000 • Monaco - 800 93 888 • Denmark - 80 888 000 • Belgium (Flemish) - 0800 710 31 • Belgium (French) - 0800 710 30  
Luxembourg - 8002 8000 • Holland 0800 0 224 234 • Spain - 9009 969 45 • Portugal - 8008 39 103 • Greece - 0800 3912 725 41 • Turkey - 0090 212 263 3001 • United Kingdom 0800 064 6468 • Latvia - 0371 7500 100

INTERNET: [www.maserati.com](http://www.maserati.com)



MASERATI QUATTROPORTE • QUATTROPORTE S • QUATTROPORTE SPORT GT S



[WWW.MASERATI.COM](http://WWW.MASERATI.COM)

MASERATI SPA · VIALE CIRO MENOTTI, 322 · I-41100 MODENA