

SIMPLY CLEVER

ŠKODA



ŠKODA RAPID & RAPID MONTE CARLO



The **ŠKODA Rapid** gives you the unique opportunity to have your style and attitude reflected in your car.

When you look at the Rapid in terms of space and with regards to size, this compact hatchback offers rear passengers outstanding space and headroom for a car in its segment. The luggage compartment also is exceptional for a car in its class.

Sharing the very latest in Volkswagen Group technology, the Rapid assures quality and value. Both petrol engine variants offer exceptionally low fuel economy - the 81TSI engine is complemented with a 6-speed manual gearbox, delivering a combined fuel economy of 5.0L/100km*; whilst the more powerful 92TSI, complimented with a 7-speed DSG automatic gearbox, remains frugal with a remarkable combined fuel consumption 4.9L/100km*.

For added peace of mind, all ŠKODA vehicles now come with a standard **5 year/unlimited kilometre warranty**[#]. Conditions and exclusions apply.



*Fuel consumption figures according to Australian Design Rule (ADR) 81/02 derived from laboratory testing. Factors including but not limited to driving style, road and traffic conditions, environmental influences, vehicle condition and accessories fitted, will in practice in the real world lead to figures which generally differ from those advertised. Advertised figures are meant for comparison amongst vehicles only.

[#]5 Year Warranty consists of 3 Year Factory Warranty and 2 Year Factory Extended Warranty. 5 Year/Unlimited Kilometre Warranty is available with private, general fleet and government vehicles only. Excludes rental vehicles, hire cars, taxis, courier vehicles, driving school vehicles, security vehicles, bus and tour vehicles which are subject to a 5 Year/150,000 Kilometre Warranty (whichever occurs first). Your rights under this warranty sit alongside the consumer guarantees under the Competition and Consumer Act 2010 which cannot be excluded.





Rapid with optional Image Pack shown.

ŠKODA 'Simply Clever'

Being one of the world's oldest car companies, ŠKODA has a long history of excellent craftsmanship and a reputation for exacting standards and delivering on its promise to its customers. By purchasing a ŠKODA you'll join millions of others who enjoy the quality, reliability and safety that defines one of Europe's fastest-growing car brands.

With Volkswagen Group technology underpinning ŠKODA's platform of smart thinking, and with the experience that comes from ŠKODA's proud heritage, the Rapid is built to exceed the expectations of Australian drivers. What sets ŠKODA apart is being able to deliver 100% European design, technology and engineering at an extremely affordable price, providing quality and value to the Australian market like never before.

It's what makes ŠKODA 'Simply Clever'.

Design

ŠKODA's design philosophy is to balance form with function, creating elegant vehicles that are resolutely European. The unique character of the Rapid Spaceback is underpinned by both distinctive and highly functional design.

The Rapid's aesthetic appeal is further accentuated with the optional Image Pack; featuring an extended glass tailgate, rear view camera*, black side mirrors, darkened tail lights, dark frosted fog lights with LED daytime running lights and 17" black alloy wheels.





Rapid with optional Image Pack shown.

EXTERIOR

- > Extended Tailgate Glass
- > Privacy Glass

- > Front Fog Lights with LED Daytime running lights



The **front design** of the Rapid introduces a new design language of the ŠKODA brand, defining the shape and composition of the individual exterior elements. The headlights smoothly flow from the distinctive **front grille**. The **ŠKODA logo** stands out perfectly against the rounded edge of the bonnet above the chrome frame of the grille, while the LED daytime running lights* adds to the contemporary appeal of the Rapid.



The **rear lights** wrap around to the sides and are shaped in the distinct ŠKODA "C" shape design. As part of the Image Pack, the rear lights have a darkened black finish.



Optional Image Pack shown.

From the side, the Rapid impresses with its elegant clean surfaces and dynamic lines while retaining its compact dimensions.

*Included in optional Image Pack.



Rapid with optional Image Pack shown.

While the clean, sharp side lines suggest dynamism and spaciousness, the rear displays balanced proportions and functional details such as the **extended black tailgate*** and **privacy glass*** to ensure the car is still sleek and compact.

*Included in optional Image Pack.

INTERIOR

- > SmartLink smartphone connectivity with Apple CarPlay® and Android Auto™
- > ŠKODA Surround Sound System
- > 3-Spoke Multifunctional Steering Wheel

The 5" touch screen **Swing radio** has an SD card slot and USB with MP3 and WMA compatibility, as well as the ability to play/stream music via Bluetooth®. The Rapid is offered with **6 speakers**, equipped with **ŠKODA surround sound** – developed with leading audio brand Arkamys®.



In addition to the features on the Swing radio unit, the touch screen 6.5" **Bolero infotainment unit** is equipped with **SmartLink™ smartphone connectivity**^ . This delivers a seamless connection between your car and smartphone using, **Apple CarPlay®** and **Android Auto™** interfaces. Whether you want to select and listen to music on your smartphone or receive turn-by-turn directions, all of this is mirrored on the central display.



SmartLink featuring Apple Carplay®

The instrument panel is clearly laid out and equipped with a multifunctional display. The display not only shows trip computer functions such as range and average fuel consumption, but also shows the vehicle status, gear recommendation, audio and telephone functions.



In addition to maintaining the preselected speed, **cruise control** enables you to increase or reduce speed without using the pedals. This function is controlled by the button on the side of the left indicator stalk.



Overseas Model Shown.



The **multimedia holder** located in the centre console is not only a practical accessory but also a safe place for storing your iPod and mobile phone.

The **3-spoke multifunctional steering wheel** allows full control of the Bluetooth® phone and audio streaming, as well as the control of the trip computer functionalities and vehicle status.

^Included in optional Image Pack for Rapid. ~SmartLink is compatible for selected apps with the latest smartphone versions of iOS and Android.



SPACE AND STORAGE

> Front Centre Armrest

> Clever Storage Solutions

> Vast Boot Capacity

As ŠKODA drivers have come to expect, the Rapid is full of '**Simply Clever**' space and storage areas, as well as designs to offer solutions that fit your lifestyle.

The Rapid features numerous cup holders throughout the cabin.



A **1.5L bottle holder and removable rubbish bin** are 'Simply Clever' features located on the door panel.



The Rapid now comes standard with an **umbrella** located underneath the front passenger seat.



A convenient **sunglasses holder**[#] is located above the rear view mirror.



The adjustable **front armrest** features a small storage compartment. Handy net pockets are also located on the inside of front seat back.



The **illuminated glove box** in the lower part of the dashboard by the front passenger is convenient place to stow away items. It is also cooled when Climatronic air-conditioning is equipped (included with optional tech pack for Rapid Monte Carlo.)



The **luggage compartment** is exceptionally spacious, offering a basic capacity of **384 litres** and an impressive extended capacity (with the rear seats folded down) of **1,349 litres**. If necessary, you can fold down only one or two backrests and get more storage space, while a place for seating remains in the rear.

SAFETY

- > Electronic Stability Control (ESC)
- > Electronic Differential Lock (EDL)

- > 6 airbags
- > Rear View Camera

- > Daytime running lights
- > Multi-collision Brake



The Rapid is equipped with **6 airbags**: Driver and passenger front, side and curtain airbags. Depending on the impact, direction or angle, airbags may activate in conjunction with the front seat belt pretensioners. This will anchor you in the middle of the seat and cushion you to reduce injury.



The **Multi-collision Brake** feature has been designed to provide effective assistance for the driver in the moments after an accident. Multi-collision Brake triggers automatic controlled braking once an initial collision has been detected so as to reduce the intensity of further accidents after a collision and can help prevent follow-on collisions with oncoming traffic.



The **Rear wiper** allows for visibility out of the rear window whatever the weather.



Included in the optional Image Pack, the **Rear View Camera*** gives a clear view of objects usually out of sight allowing the driver to manoeuvre with added confidence and safety. When in reverse, the infotainment unit reveals a real-time image display with superimposed graphic lines thanks to the camera built into the tailgate.

*Safety technologies are not a substitute for the driver's responsibility of the vehicle.



Overseas model shown.



The **Rapid** interior features black fabric upholstery, black dashboard with silver brushed inserts. The Rapid hosts a variety of technology and comfort features as standard including: 6 airbags, Multi-collision Brake, 5" touch screen Swing radio with Bluetooth® audio and phone streaming, 6 Arkamys® surround sound speakers, 3-spoke multifunctional steering wheel, air-conditioning and cruise control.

ŠKODA Rapid colours



Candy White



Corrida Red



Race Blue metallic



Moon White metallic

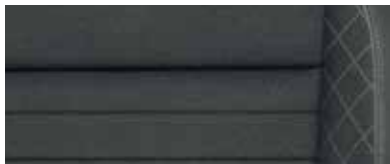


Brilliant Silver metallic



Black Magic pearl effect

Rapid Interior



Black fabric

Rapid Wheels



7.0J x 16" **Dione** alloy wheels for 215/45 R16 tyres



7.0J x 17" **Ray** alloy wheels for 215/40 R17 tyres, in black design exclusive to the optional Image Pack.

Please note that Metallic and Pearl Effect Paint are options at extra costs. The print process does not allow for exact reproduction of the exterior or the upholstery colours. Please contact your authorised SKODA dealer for further information on colours and upholstery combinations. Overseas models are shown for illustrative purposes only.

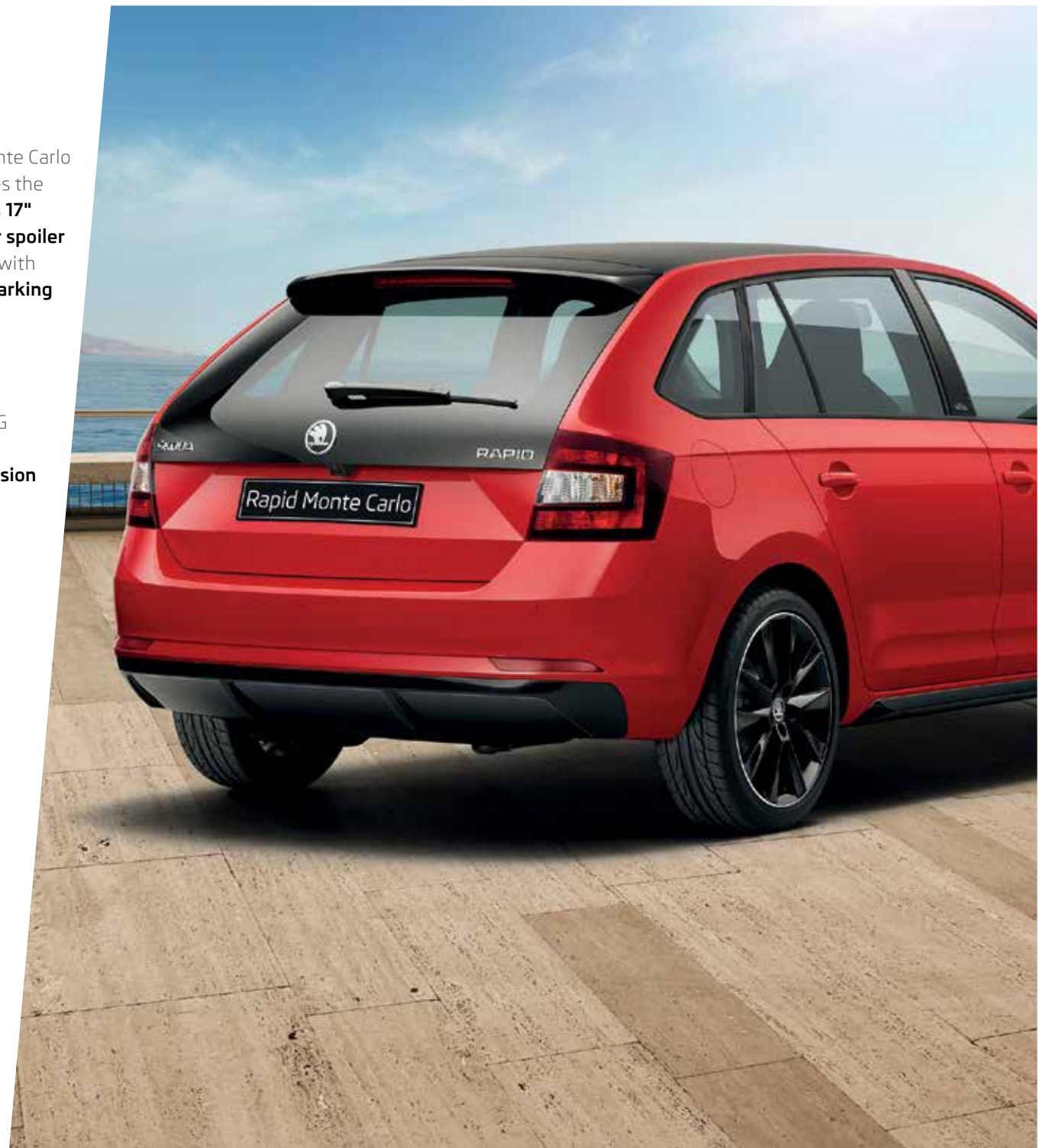
ŠKODA RAPID MONTE CARLO





Inspired by ŠKODA's rich history at the Monte Carlo rally stage, the **Rapid Monte Carlo** provides the perfect blend of sporty aesthetics such as **17" black alloy wheels, black grille, black rear spoiler** and **panoramic glass roof** complemented with practical standard features such as **rear parking sensors** and **Xenon headlights**.

The Monte Carlo offers the same 81TSI and 92TSI petrol engines, complemented with the 6-Speed Manual and 7-Speed DSG transmissions respectively. Likewise with safety, offering **six airbags** and **Multi-collision Brake** as standard.





The large fixed **panoramic glass roof** offers an enchanting view up and is an exclusive standard feature to the Rapid Monte Carlo. For added comfort, two manually operated internal blinds cover the whole roof from the inside.

EXTERIOR

> Xenon headlights

> Front door sills

> Rear view camera

The stylish Rapid already offers a dynamism in its basic design. The Monte Carlo version adds another layer of sportiness.

The Monte Carlo features **Xenon headlights** as standard, illuminating the road ahead for optimal driver visibility and as a safety feature for oncoming vehicles. In addition, **fog lights with cornering function** offer visibility at low speeds by illuminating the area the car is about to turn into.

The front **door sill strips** with Monte Carlo inscription, have both decorative and protective functions.

Parking is made easier with rear parking sensors standard on Monte Carlo. In addition, the **rear view camera*** is available in the optional Tech Pack on the Monte Carlo.



The front end of the Monte Carlo hints sporting pedigree with headlights, fog lights, front grille and side mirrors all in **black design**. As part of the optional Tech Pack, the Monte Carlo can be equipped with **LED daytime running lights** and **Front Assist with City Emergency Brake***.

Front Assist[^] uses a radar-based system that monitors the area in front of the car at speeds above 30km/h. Using predefined algorithms, it decides whether these objects pose a potential risk of collision and alerts the driver if the distance to object is insufficient - initially with a tone and an alert on the multi-functional display; followed by a warning jolt of the brakes. If the driver doesn't respond, the car will brake itself - all the way to a standstill if needed, helping to avoid a collision or reduce the severity of the accident. It can be turned off by the driver via the touchscreen. For vehicle speeds below 30km/h, City Emergency Brake is designed to help a driver avoid a low-speed crash or to reduce its severity.

*Safety technologies are not a substitute for the driver's responsibility for the vehicle. ^Included in the Tech Pack.

INTERIOR

> Sport seats

> Sports alloy pedals

> 3-spoke, flat-bottom sports steering wheel

The interior features **front sports seats** and upholstery in a combination of red, black and grey. The **3-spoke, multi-functional, flat-bottom sports steering wheel** is in black, perforated leather-appointed material with red stitching. Textile floor mats are also fitted as standard equipment.



The **front armrest** contains a storage compartment for small items to be housed.



The **gear stick** comes in black leather appointed upholstery with red stitching as standard.



Sports alloy pedals are standard equipment on the Monte Carlo that enhance the sporting aesthetics of the interior.





The Rapid Monte Carlo hints sporting pedigree with headlights, fog lights, front grille, side mirrors, glass tailgate and 17" alloy wheels in black design, as well as sports seats and pedals. In addition to the standard features on the Rapid, the Monte Carlo is equipped with xenon headlights, panoramic glass roof, privacy glass, rear parking sensors, light assist and rain sensor as standard.

ŠKODA Rapid Monte Carlo colours



Moon White



Corrida Red



Race Blue metallic



Steel Grey



Candy White



Black Magic Pearl Effect

ŠKODA Rapid Monte Carlo Wheel



7.0J x 17" Savio black alloy wheels
for 215/40 R17 tyres

Please note that that Metallic and Pearl Effect Paint are option at extra costs. The print process does not allow for exact reproduction of the exterior or the upholstery colours. Please contact your authorised ŠKODA dealer for further information on colours and upholstery combinations. Overseas models are shown for illustrative purposes only.

Model equipment

Safety and Security	Rapid	Rapid Monte Carlo
Driver and front passenger airbags	●	●
Driver and front passenger side airbags	●	●
Curtain airbags - front and rear	●	●
Electronic Stability Control (ESC) (incl. Hill Hold Control)	●	●
Multi-collision Brake	●	●
Anti-lock Braking System (ABS)	●	●
Anti-Slip Regulation (ASR)	●	●
Electronic Differential Lock (EDL)	●	●
Emergency fuel supply cut-off	●	●
Height-adjustable front headrests	●	—
Height-adjustable three-point front seat belts with pretensioners; three-point rear seatbelts	●	●
Electronic engine immobiliser	●	●
Daytime Running lights	●	●
ISOFIX child seat anchorage points, outer rear seats	●	●
Front fog lights	●	—
Front fog lights with cornering function	—	●
Light Assist (coming home, leaving home, tunnel light, day light) and rain sensor	—	●
Function and Storage		
Green Tech including Start/Stop technology and Brake Energy Recuperation [#]	●	●
Three-spoke multi-function leather steering wheel (with radio and phone controls)	●	—
Three-spoke multi-function, flat-bottom sports steering wheel (with radio and phone controls)	—	●
Multi-function trip computer with high resolution display including trip time, trip length, average and current speed, average and current fuel consumption, distance until empty, oil temperature and outside temperature indicator, vehicle status, audio and telephone	●	●
Interior package (storage pockets on inner sides of front seat rests, rubbish bin in door panel, multimedia device holder)	●	●
Centre console with 12V socket, bottle holder and storage box	●	●
Door-open indicator	●	●
Front Aero wipers with wash/wipe function	●	●
Rear wiper with wash/wipe function	●	●
500ml bottle storage compartment in rear door panelling	●	●
1.5L bottle storage compartment in front door panelling	●	●
Interior illumination on all doors	●	●
Pockets in front and rear doors	●	●
Push-push - tank lid opening with electric release (through the central locking)	●	●
Split folding rear seat backrest (60/40)	●	●
Storage box in lower dashboard on passenger's side - closed (illuminated, with Climatronic air conditioning and cooled)	●	●
Rear storage pocket on front seats	●	●

● standard ○ option — not offered

[#]The Green Tech - Start/Stop system is designed to reduce fuel consumption and CO2 emissions. It achieves this by automatically switching off the engine while the vehicle is stationary and then starting it again automatically when the driver wants to drive off. There are certain operating conditions where the Start/Stop system is deactivated (e.g. during engine warm-up), please refer to the owner's manual for full operating information.

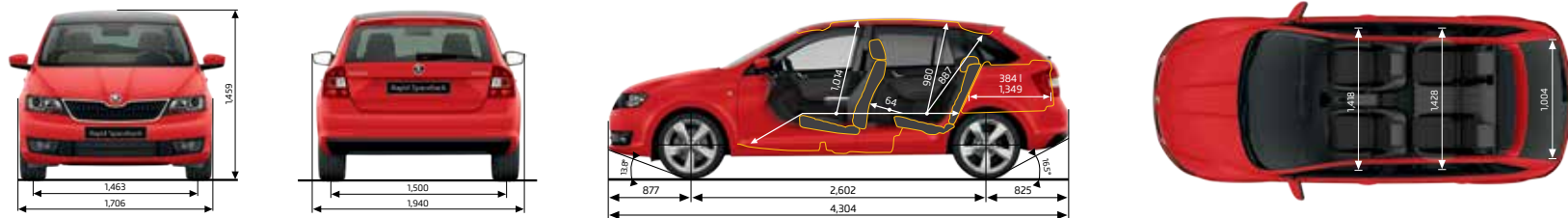
Model equipment (continued)

Function and Storage (continued)	Rapid	Rapid Monte Carlo
Ticket holder on A pillar	●	●
Front armrest with storage	●	●
Textile floor mats	●	●
15" steel spare wheel (speed limited)	●	●
Comfort and Convenience		
5" touch screen Swing infotainment unit with MP3 player including Bluetooth® audio and streaming, USB, AUX and SD card slot	●	●
ŠKODA Surround Sound - Developed with Arkamys® (6 speakers)	●	●
Air conditioning	●	●
Pollen filter	●	●
Height-adjustable driver seat	●	●
Height-adjustable driver and passenger seat	—	●
2 front and rear reading lights	●	●
Central door locking with remote control (1 foldable key)	●	●
Driver's and passenger's side vanity mirrors in sun visor	●	●
Tinted windows	●	●
Electrically adjustable and heatable exterior mirrors	●	●
Front and rear electric windows with child lock	●	●
Leather package (3-spoke steering wheel, hand brake handle, gear lever handle)	●	●
Cruise control	●	●
Rear parking sensors	A	●
Privacy Glass (SunSet)	A	●
Umbrella (under the front passenger seat)	●	●
Design		
Body coloured bumpers and door handles	●	●
Integrated side indicators	●	●
Chromed inner door handles	●	●
Chrome framed air-conditioning vents	●	●
Halogen headlights	●	—
Xenon headlights	—	●
Dione alloy wheels 7jx16" - 4 pcs.	●	—
Savio black alloy wheels 7jx17" - 4 pcs.	—	●
Brushed silver décor stripe on dashboard	●	—
Carbon décor stripe on dashboard	—	●
Sports seats	—	●
Sports pedals	—	●
Panoramic glass roof	—	●
Monte Carlo design pack (incl. black headlight and foglight surround, black grille, black side mirrors, extended glass tailgate, door sills, driver instrument cluster)	—	●

● standard ○ option — not offered A available in optional package

Model equipment (continued)

Optional Packages	Rapid	Rapid Monte Carlo
Image Pack		
Rear View Camera*	P	—
Rear Parking sensors	P	●
Extended glass design on tailgate	P	●
Bolero radio with 6.5" touch screen, MP3 player including Bluetooth® audio and streaming, USB, AUX and SD card slot	P	—
Ray 17" black alloy wheels	P	—
LED daytime running lights	P	—
SmartLink™ Smartphone connectivity including Apple CarPlay® and Android Auto™	P	—
Privacy Glass (SunSet)	P	●
Black side mirrors	P	●
Black-frosted glass design on fog lights	P	●
Darkened tail lights	P	●
Tech Pack		
Touch screen 6.5" Amundsen Satellite Navigation with with MP3 player including Bluetooth® audio and streaming, USB, AUX and SD card slot	—	P
Advanced keyless entry including smart start (KESSY) and alarm	—	P
Front Assist with City Emergency Braking*	—	P
Rear View Camera*	—	P
Climatronic air-conditioning	—	P
LED daytime running lights	—	P
SmartLink™ Smartphone connectivity including Apple CarPlay® and Android Auto™	—	P
Fatigue detection*	—	P



● standard ○ option — not offered P included in the package

*Safety technologies are not a substitute for the driver's responsibility of the vehicle. -SmartLink is compatible for selected apps with the latest smartphone versions of iOS and Android.

Technical specifications

Model	81TSI Manual	92TSI DSG automatic
Engine type	Turbocharged petrol engine, in-line, liquid cooling system, direct injection, OHC, transverse in front	
Cylinders/Displacement (cm ³)	4/1,197	4/1,390
Max. engine performance/revs (kW at rpm)	81/5,600	92/6,000
Max. torque/revs (Nm at rpm)	175/1,400-4,000	200/1,400-4,000
Fuel quality	Unleaded Petrol min RON 95	
Performance#		
Maximum speed (km/h)	198	205
Acceleration 0-100 km/h	9.7	8.9
Consumption (l/100 km)*		
- combined	5.0	4.9
- urban	6.3	6.2
- extra-urban	4.3	4.2
Transmission		
Driven wheels		Front-wheel drive
Clutch	Hydraulic single dry clutch disc	Two coaxial dry multiple-disk clutch, electro-hydraulically operated
Transmission	Manual 6-speed	DSG 7-speed
Weight		
Tare Mass (kg)	1,115	1,156
Max. roof load (kg)	75	75
Body	5-seater, 5-door, 2-compartment	
Drag coefficient Cd	0.31	0.311
Chassis		
Front axle	MacPherson suspension with lower triangular links and torsion stabiliser	
Rear axle	Compound link crank-axle	
Braking system	Hydraulic dual-diagonal circuit braking system vacuum assisted with Dual Rate system	
Brake - front	Disc brakes with inner cooling and with single piston floating calliper	
Brake - rear	Disc brakes	
Steering system	Direct rack-and-pinion steering with electro-mechanic power steering	
Wheels	7x16* (7x17* in Monte Carlo)	
Tyres	215/45 R16 (215/40 R17 in Monte Carlo)	
Liquids		
Tank capacity (l)	55	
Outside dimensions		
Length (mm)	4,304	
Width (mm)	1,706	
Wheelbase (mm)	2,602	
Ground clearance (mm)	134	
Track front/rear (mm)	1441/1478	
Inside dimensions		
Width - front/rear	1,418/1,428	
Headroom - front/rear	1,014/980	
Storage capacity		
with rear seats upright (l)	384	
with rear seats down (l)	1,349	

#Please note figures are sourced from overseas data where equipment levels by model variant may vary. *Fuel consumption figures according to Australian Design Rule (ADR) 81/02 derived from laboratory testing. Factors including but not limited to driving style, road and traffic conditions, environmental influences, vehicle condition and accessories fitted, will in practice in the real world lead to figures which generally differ from those advertised. Advertised figures are meant for comparison amongst vehicles only.

WELCOME TO CARE-FREE OWNERSHIP

ŠKODA Care is about making sure that same level of attention to detail remains long after you've made your purchase, making owning a ŠKODA as fantastic as buying one.



After getting behind the wheel of a ŠKODA, it's not hard to see why they're so beloved by their owners. Quite simply, ŠKODA vehicles are made to be driven and we want to keep your journey a long and happy one. And the way it works is simple. ŠKODA Australia provides a 5 Year/Unlimited Kilometre Warranty# across the entire range. Conditions and exclusions apply.

Every new ŠKODA vehicle includes a complimentary one year roadside assistance, from the warranty start date. The complimentary roadside assistance will subsequently be renewed on an annual basis for the second, third, fourth and fifth years, if the vehicle is returned to an Authorised ŠKODA dealer for scheduled maintenance (as per the ŠKODA service program) up to a maximum of five years.



ŠKODA Service Pricing

Buying a car is one thing, but owing a car is something else entirely. We're sure you'll want to know the costs of any service before you book it in. The cogs in our heads have been turning and we've come up with a solution we think is pretty clever. Our handy online service calculator can help you find the cost of your next service, scheduled to occur every 12 months/15,000 kms (whichever occurs first)^. No hidden expenses, no nasty surprises.



Genuine Parts

You don't have to be a genius (AKA a ŠKODA technician) to know that non-genuine parts aren't as good as using genuine ones. Our philosophy towards fixing your car is simple; the parts we use are identical to the parts used in the production of your car originally. Genuinely. And with a nationwide, two year, unlimited kilometre warranty on all genuine parts, peace of mind comes easily too. Exclusions apply, please visit skoda.com.au.



Service Packs

Why worry about handling the payment of your services on an ad-hoc basis when you already know you need to get them annually? Conveniently, you can save time by pre-paying your servicing with a 3 Year/45 000km or a 5 year/75 000km ŠKODA Service Pack^ at any of our ŠKODA dealers. That way you can simply book a service time that suits you, and the costs are already covered. Your car, serviced at your convenience.

ŠKODA CHOICE: PROTECT YOUR INVESTMENT

Enjoy a flexible finance solution that provides you with the assurance of knowing exactly what the minimum value² of your vehicle will be at the end of your term.

- ✓ Peace of mind knowing the minimum future value of your ŠKODA right from the start, so you know it will retain its value over time¹
- ✓ Personally tailored solutions, based on your term and kilometre usage
- ✓ Opportunity to upgrade your ŠKODA to the latest model more often, enjoying the best innovations and new technologies

At the end of your term, you can simply choose to:

TRADE-IN

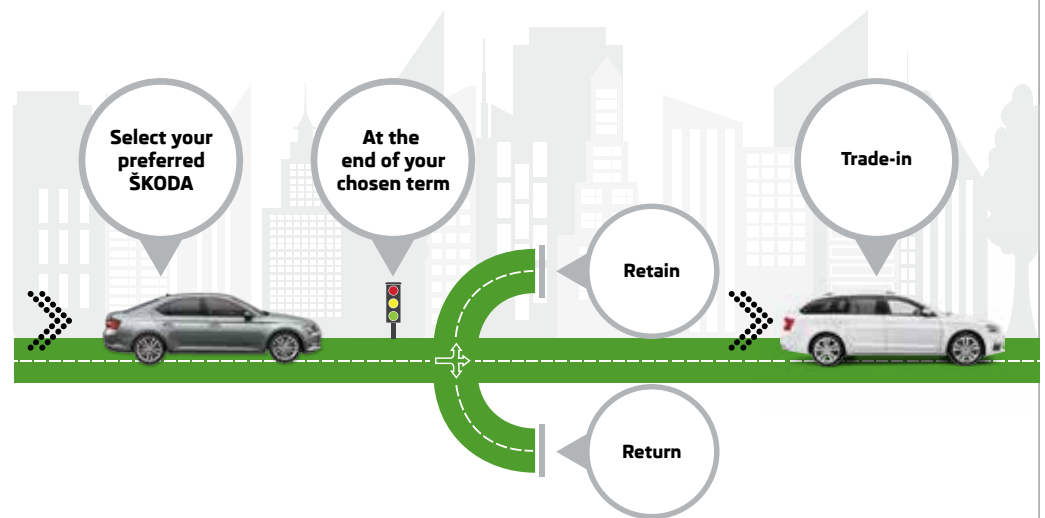
If you wish to trade-in your ŠKODA for a new vehicle, all you need to do is return it to the dealership. If the trade-in value is higher than the Guaranteed Future Value, you can use this equity towards your new vehicle.

RETAIN

If you prefer to retain your ŠKODA, simply let us know. Provided that you also meet the relevant payment obligations under your contract, if we agree, you can purchase your vehicle outright for the Guaranteed Future Value price locked in at the start of the contract². Then your ŠKODA is yours to keep, or you can choose to refinance your residual at the end of the term.

RETURN

Simply return your vehicle to your ŠKODA dealership at the end of the term. If the vehicle meets the agreed requirements², we will give you the benefit of the full Guaranteed Future Value amount.



For more information on our Guaranteed Future Value program, visit www.skodafinancialservices.com.au/gfv

¹ The ŠKODA Choice Program consists of an option to require ŠKODA Financial Services to purchase your vehicle at the end of your ŠKODA Financial Services Chattel Mortgage, Consumer Loan or Hire Purchase for a value (known as the Guaranteed Future Value) determined by ŠKODA Financial Services and set out in your contract. The Guaranteed Future Value is not a representation by ŠKODA Financial Services as to the likely market value of your vehicle as at the end of your contract. The option is available on new and demonstrator ŠKODA vehicles for selected models only. Please verify with your dealership vehicles that are eligible for the program. ² If vehicles are not returned in an acceptable condition, as defined in the terms and conditions or exceed kilometre restrictions the Guaranteed Future Value will be reduced. See the ŠKODA Choice Fair Wear and Tear Guide for more information on the required conditions and circumstances. The cost of the ŠKODA Choice Program is incorporated into the applicable interest rate. Please read the full terms and conditions. Please consider whether these products and services are appropriate for your circumstances. Before acting on any of the information on this page, please seek independent financial and tax advice. Full terms and conditions are available upon application. Available only to approved applicants of ŠKODA Financial Services. Subject to credit assessment. Fees and charges apply. Fleet, government, rental buyers, hire car and chauffeur companies are excluded. Available at participating ŠKODA dealers. ŠKODA Financial Services is a trading name of Volkswagen Financial Services Australia Pty Limited ABN 20 097 071 460. Australian Credit Licence 389344.

ACCESSORIES

ŠKODA Genuine Accessories add style to your car while enhancing its utility. To get a full overview of our range of products, ask any authorised ŠKODA dealer for an accessories catalogue or download a brochure from www.skoda.com.au.

You can securely attach other racks and holders, such as a bicycle holder onto the **standard roof racks**.



The **netting system** provides flexible storage options.



Rubber boot mat is durable and can easily be cleaned.



Lockable box/ski's and snowboards holder (black)



Dog Seatbelts



Rear mud flaps.



The **plastic boot dish** prevents the car upholstery from getting damaged. The dish can easily be removed and cleaned.

Glossary

Anti-lock Braking System (ABS)

When braking, sensors in each wheel measure the road speed. If one or more wheels start to lock, the ABS reduces brake pressure to those wheels. This prevents the wheels from locking during heavy or emergency braking and allows you to continue to steer the vehicle.

Anti-Slip Regulation (ASR)

ASR is a switchable traction control system that prevents the front wheels from spinning under acceleration. When a difference in driving wheel speed is detected (e.g. due to differences in road surfaces), the system automatically reduces engine torque accordingly.

Electronic Stability Control (ESC)

The ESC is made up of the ABS and ASR traction control systems. Simply put, it helps ensure that the vehicle goes where you steer it – even in extreme driving conditions. By constantly comparing the actual movement of the vehicle with pre-determined values, ESC will apply the brakes to individual wheels and automatically adjust the engine's power output to correct a problem the very moment it arises.

Brake Assist

Brake Assist aids the driver during emergency braking by automatically increasing the brake pressure to a level exceeding the locking limit. Then, the ABS is quickly brought into the operating range, thereby enabling maximum vehicle deceleration.

Multi-collision Brake

The multi-collision brake has been designed to provide effective assistance for the driver in the moments after an accident. Multi-collision brake triggers automatic controlled braking once an initial collision has been detected so as to reduce the intensity of further accidents after a collision and can help prevent follow-on collisions with oncoming traffic.

The triggering of the multi-collision brake is based on a collision being detected by the airbag sensors. The ESP control unit limits the deceleration of the vehicle by the multi-collision brake to a defined value and vehicle speed. The vehicle can still be controlled by the driver, even when automatic braking is taking place. The driver can interrupt the multi-collision braking at any time by accelerating or braking even more strongly.

Electronic Differential Lock (EDL)

EDL improves driving and steering characteristics when accelerating on road surfaces where each wheel has a different degree of traction. The system operates automatically and is combined with the ABS system. Using the ABS wheel sensors, EDL monitors the speed of the individual driving wheels. When a difference in driving wheel speed is detected (i.e. when one wheel starts to spin due to differences in road surfaces, e.g. due to water or dirt) the system brakes the spinning wheel, transferring engine power to the wheel with the best traction.

Apple CarPlay® is a registered trademark of Apple Inc. Android Auto™ is a registered trademark of Google Inc. Bluetooth® is a registered trademark of Bluetooth SIG Inc.

ŠKODA is distributed by Volkswagen Group Australia Pty Ltd trading as ŠKODA Australia, 24 Muir Road, Chullora NSW 2190. ABN 14 093 117 876. Specifications are as planned at January 2017, for Model Year 2017 and are subject to change without notice or obligation. All information in this brochure is correct at the time of publication, however variations may occur from time to time and ŠKODA, in so far as it is permitted by law to do so, shall not be liable in any way as a result of any reliance by any person on anything contained in this brochure. Authorised ŠKODA dealers will provide up-to-date information on model application, design feature, prices and availability on request. All colours are a general guide only, as the printing process cannot reproduce the actual exterior colour appearance. See your ŠKODA dealer to confirm colour/model availability.

ŠKODA Financial Services is a trading names of Volkswagen Financial Services Australia Pty Limited ABN 20 097 071 460, Australian Credit Licence 389344. Locked Bag 4002, Chullora NSW 2190. www.skodafinancialservices.com.au

Publication date: January 2017

skoda.com.au

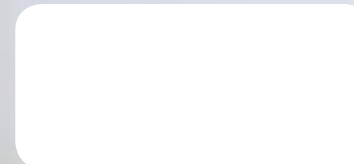


@skodaaustralia



www.facebook.com/skodaaustralia

Your ŠKODA partner:



SKORAPBROMY17



Rapid Pricing and Equipment Overview - MY17





Rapid Pricing Summary MY17

Rapid				Rapid	Monte Carlo
Engine	Transmission	Power	Torque	RRP [#] / Driveaway ^ˆ	RRP [#] / Driveaway ^ˆ
81TSI	6-sp Manual	81kW@4600	175Nm@1400-4000	\$18,190 / \$18,990	\$23,190 / \$24,990
92TSI	7-sp DSG	92kW@5000	200Nm@1400-4000	\$21,190 / \$21,790	\$25,990 / \$27,790

Manufacturer's recommended retail price (MRRP) excluding dealer delivery charges, statutory charges and optional extras.

ˆ Manufacturer's recommended driveaway price (MRDP). Options and metallic paint available for an additional cost. MRRP includes 12 months private registration, 12 months compulsory third party insurance, dealer delivery and stamp duty. The driveaway price shown is based on the owner being a 'rating one' driver aged 40 with a good driving record. Actual driveaway price may differ depending on choice of dealer and individual circumstances. SKODA Australia reserves the right to vary the MRDP in its discretion. The above pricing does not take into account any campaign/promotion that may be current in relation to any of the above models. Contact your local SKODA Dealer to confirm your specific price, availability and any current campaign/promotion pricing.



Equipment Key Features MY17

Rapid	Monte Carlo (in addition to Rapid)
Exterior /Interior	
<ul style="list-style-type: none"> > 16" Dione Alloy wheels > 3-spoke multi-functional leather steering wheel with control for radio and phone > Black fabric seats > Graphite metallic décor dashboard inserts 	<ul style="list-style-type: none"> > 16" alloy wheels → 17" Black Savio Alloy wheels > Flat-bottom sports steering wheel > Sports seats and pedals > Xenon headlights > Panoramic glass roof > Privacy glass (Sunset) > Carbon décor dashboard inserts > Monte Carlo design pack (incl. black headlight and foglight surround, black grille, black side mirrors, prolonged glass tailgate, door sills, instrument cluster)
Safety	
<ul style="list-style-type: none"> > 6 airbags - dual front, front-side, curtain airbags > Electronic Stability Control incl.: <ul style="list-style-type: none"> • Anti-lock Braking System • Electronic Brake-pressure Distribution • Anti-Slip Regulation • Electronic Differential Lock 	<ul style="list-style-type: none"> > Rear parking sensors > Light assist (coming home, leaving home, tunnel light, day light)
Infotainment	
<ul style="list-style-type: none"> > Swing radio with 5" touch screen (MP3 Player and auxiliary input socket) > ŠKODA Surround Sound - Developed with Arkamys® (6 speakers) > Bluetooth® phone connectivity with audio streaming > Trip Computer 	
Convenience	
<ul style="list-style-type: none"> > Air conditioning > Remote Central Locking > Cruise control > Front fog lights > Umbrella (under the passenger seat) > Height adjustable driver seat 	<ul style="list-style-type: none"> > Rain sensor > Front fog lights with cornering function > Height-adjustable driver and passenger seat



Packages MY17

		Rapid	Monte Carlo
Image Pack			
Price		\$1,900~	-
you save		\$1,680 (≥40%)	-
> Rear Parking sensors	value	\$640*	-
> Rear view camera	value	\$600*	-
> Extended glass design on tailgate	value	\$400*	-
> Bolero radio with 6.5" touch screen, MP3 player including Bluetooth® audio and streaming, USB, AUX and SD card slot	value	\$360*	-
> Ray 17" black alloy wheels	value	\$300*	-
> LED daytime running lights	value	\$260*	-
> SmartLink Smartphone connectivity including Apple CarPlay and Android Auto	value	\$250*	-
> Privacy Glass (SunSet)	value	\$250*	-
> Black rear spoiler	value	\$200*	-
> Black side mirrors	value	\$120*	-
> Black-frosted glass design on fog lights	value	\$100*	-
> Darkened tail lights	value	\$100*	-
> Total Individual Items	total value	\$3,580*	-
Tech Pack			
Price		-	\$2,200~
you save		-	\$1940~ (≥40%)
> AMUNDSEN Satellite Navigation with 6.5" touch screen	value	-	\$1,080*
> Advanced keyless entry including smart start (KESSY) and alarm	value	-	\$800*
> Front Assist with City Emergency Braking	value	-	\$600*
> Rear view camera	value	-	\$600*
> Climatronic air-conditioning	value	-	\$350*
> LED daytime running lights	value	-	\$260*
> SmartLink Smartphone connectivity including Apple CarPlay and Android Auto	value	-	\$250*
> Fatigue detection	value	-	\$200*
> Total Individual Items	total value	-	\$4,140*

~ Manufacturer's Recommended Retail Price. Available at participating ŠKODA dealers

* Items are not for sale individually

- not offered



ŠKODA Care, Options & Colours MY17

ŠKODA 3-year Care Pack *		
RRP		\$1,849~
you save		\$649 (~26%)
> 2 year Factory Extended Warranty*	<i>value</i>	\$1,399
> 3 year/45,000km Service	<i>min value</i>	\$1,099*
> Total Individual Items	<i>total value</i>	\$2,498

ŠKODA 5-year Care Pack *		
RRP		\$3,099~
you save		\$499 (~14%)
> 2 year Extended Factory Warranty*	<i>value</i>	\$1,399
> 5 year/75,000km Service	<i>min value</i>	\$2,199*
> Total Individual Items	<i>total value</i>	\$3,598

ŠKODA Choice ^	
Guaranteed Future Value	
> Protect your investment and enjoy peace of mind, knowing the minimum future value from the start	
> Tailored finance solutions, with convenient choices at the end of your term	
> Upgrade your ŠKODA more often, enjoying the latest model with the best innovations and technology	
> for more information and participating dealers please refer to http://www.skodafinance.com.au	



Guaranteed Future Value

~ Manufacturer's recommended retail price (MRRP), available at participating dealers.

* ŠKODA's Care Packs and 2 Year Extended Warranty are only available for purchase at or before the time of first registration of a new ŠKODA vehicle. It may not be purchased after taking delivery of a vehicle.

#ŠKODA Care Pack and ^ŠKODA Service Pack Service covers standard items as contained in each scheduled service interval only. Exclusions apply. For further information, regarding this ŠKODA Care Pack, including pricing and terms and conditions, please consult your local ŠKODA dealer or visit www.skoda.com.au.

^ The ŠKODA Choice Program consists of an option to require ŠKODA Financial Services to purchase your vehicle at the end of your ŠKODA Financial Services Chattel Mortgage, Consumer Loan or Hire Purchase for a value (known as the Guaranteed Future Value) determined by ŠKODA Financial Services and set out in your contract. The Guaranteed Future Value is not a representation by ŠKODA Financial Services as to the likely market value of your vehicle as at the end of your contract. The option is available on new and demonstrator ŠKODA vehicles for selected models only. Please verify with your dealership vehicles that are eligible for the program. If vehicles are not returned in an acceptable condition, as defined in the terms and conditions or exceed kilometre restrictions the Guaranteed Future Value will be reduced. See the ŠKODA Choice Fair Wear and Tear Guide, downloadable on this page, for more information on the required conditions and circumstances. The cost of the ŠKODA Choice Program is incorporated into the applicable interest rate. Please read the full terms and conditions. Please consider whether these products and services are appropriate for your circumstances. Before acting on any of the information on this page, please seek independent financial and tax advice. Full terms and conditions are available upon application. Available only to approved applicants of ŠKODA Financial Services. Subject to credit assessment. Fees and charges apply. Fleet, government, rental buyers, hire car and chauffeur companies are excluded. Available at participating ŠKODA dealers.

For Full Terms, Conditions and exclusions visit your nearest participating ŠKODA dealer. Prices (incl GST) valid at the time of publishing. Subject to change without notice.

Service Packs and Extended Factory Warranty	
2 year Extended Factory Warranty *	\$1,399~
3 year/45,000km Service Pack #	\$1,099~
5 year/75,000km Service Pack #	\$2,199~

Colours	Rapid	Monte Carlo
Candy White	o	o
Corrida Red	o	o
Moon White (met)	o	o
Brilliant Silver (met)	o	-
Steel Grey	-	o
Magic Black (pearl)	o	o
Race Blue (met)	o	o

Options	Rapid	Monte Carlo
Metallic/Pearl Effect Paint	\$500~	\$500~

o Optional
- not offered