

FORESTER

MODEL YEAR 2012



ALL 4 THE DRIVER™



SUBARU



MODEL SHOWN: Forester XT

FREEDOM IS IN OUR DNA

Bring on storms.

Bring on hairpins.

Bring on gravel roads and dirt roads.

Get off the beaten track.

Discover somewhere new.

UNRAVEL THE
FORESTER'S DNA AT
SUBARU.COM.AU



ALL 4 THE PERFORMANCE. THE SAFETY. THE RETAINED VALUE

Our DNA is what makes every Subaru a Subaru. It's our constant focus on Performance, Safety and protecting the Retained Value of your Subaru that makes Subaru distinct from any other car brand. Our DNA delivers you, the Driver, the confidence to exploit your Freedom everyday.

POISED PERFORMANCE

Subaru has long been highly regarded for its performance technologies. From the rally circuit to the highway, Subaru's engineering and driving characteristics are focused on delivering a driving experience unlike any other, handling all road and weather conditions with ease, control and comfort.



→ SYMMETRICAL ALL-WHEEL DRIVE

Delivers outstanding grip, balance and control in a variety of road conditions when combined with Subaru's horizontally-opposed Boxer engine technology and a symmetrical drivetrain.



→ HORIZONTALLY-OPPOSED BOXER ENGINE

Ensures smooth power delivery, with less vibration and its low centre of gravity gives optimum balance and control to you, the Driver.

SUPERIOR SAFETY

Impressive safety credentials have earned Subaru the maximum five-star ANCAP occupant safety rating, plus freedom from worry for you, thanks to Subaru's -



→ VEHICLE DYNAMICS CONTROL SYSTEM



→ RING-SHAPED PASSENGER SAFETY CELL

→ DUAL FRONT, DUAL FRONT SIDE AND CURTAIN AIRBAGS



→ ABS, EBD AND 4-WHEEL DISC BRAKES

RETAINED VALUE



Freedom comes from knowing that you've made a great investment. Every Subaru comes into the world as the best car it can be, and then we help you to keep it that way. We promise to protect your freedom by looking after the performance, safety and the retained value of your vehicle. With our dedicated Subaru Service Centres and microscopic **DataDotDNA**® theft protection, your car is in good hands for many years to come.



ALL OF THIS ADDS UP TO A GREATER EXPERIENCE FOR YOU –
THE FORESTER DRIVER. SUBARU. ALL 4 THE DRIVER.™

GET MORE DONE HAVE MORE FUN

Fill your Forester with friends and food and head towards something you've always wanted to do. Or somewhere you've never been. Your Forester is for using. So be proud of the kilometres, be a success at the fun stuff.



ROOM TO MOVE

As a compact SUV that's also fun to drive, the Forester has earned itself a reputation as a great all-rounder. Modern styling and Subaru reliability mean that it can take you and the family on your next adventure. Everyone will travel in comfort, with more than enough boot space to take your gear too. Plus the sleek, fully integrated roof rails give you the option to add a range of cargo carrying accessories.



DISCOVER THE COMFORT
OF THE FORESTER AT
SUBARU.COM.AU



MODEL SHOWN: Forester XS Premium





WEEKEND WARRIOR

The weekends are sacred. So worship your time off, by heading out into nature. Turn off the highway and take the back roads. Take a tent. Take on a new hobby. And take it all in your stride in a car that's All 4 the Driver™ and all for the weekend.



Who needs an excuse to get away when the Forester awaits you? It's a car that revels in the journey. So find the longest way from A to B. With a range of Forester models to choose from, there's a performance and luxury combination to suit everyone. Built without compromise on a common platform, Forester offers a dynamic range of features and equipment levels that will leave you spoilt for choice.

TOP TO BOTTOM:

- SELF-LEVELLING LOW BEAM XENON HEADLIGHTS.¹
- SPORTY INTEGRATED FRONT GRILLE READY FOR ANY ADVENTURE.
- FRONT FOG LIGHTS.²

EXPLORE FORESTER AT
[SUBARU.COM.AU](https://www.subaru.com.au)

1. Forester XT, Forester XT Premium, Forester S-EDITION and Forester 2.0D Premium. 2. All models excluding Forester X.



BREAK WITH CONVENTION

With *Bluetooth*^{®1} wireless technology and a 12-volt power outlet to recharge your mobile phone, Forester keeps you in touch with the world. All models feature a single CD player, while the auxiliary jack and USB port fitted in the front centre console (excluding models with satellite navigation fitted) allow you to control your MP3 player through the steering wheel mounted audio buttons. The ergonomically designed dash includes a fully integrated multi-information display, giving the driver essential information including fuel economy statistics. Or get behind the wheel of the Forester XT Premium or S-EDITION and the dash line-up includes electroluminescent instruments for ease of sight, a multi-information satellite navigation system with seven-inch screen, single CD/DVD player and a rear view reverse camera.

TOP TO BOTTOM:

- STEERING WHEEL MOUNTED AUDIO CONTROLS.
- HEIGHT ADJUSTABLE TELESCOPIC STEERING WHEEL.
- DUAL ZONE CLIMATE CONTROL AIR-CONDITIONING - FORESTER XT, FORESTER XT PREMIUM, FORESTER S-EDITION AND FORESTER 2.00 PREMIUM.
- SINGLE IN-DASH CD PLAYER WITH AUXILLARY JACK, USB PORT AND 4.3" DISPLAY - FORESTER XS, FORESTER XS PREMIUM, FORESTER 2.0D PREMIUM AND FORESTER XT.
- IPOD/MP3 COMPATIBILITY LETS YOU TAKE YOUR FAVOURITE MUSIC WITH YOU.
- SINGLE IN-DASH CD PLAYER WITH MP3/WMA/IPOD COMPATIBILITY - FORESTER X AND FORESTER 2.0D.
- BUILT IN SATELLITE NAVIGATION SYSTEM WITH SINGLE CD/DVD PLAYER AND REAR VIEW REVERSE CAMERA - FORESTER XT PREMIUM (SHOWN RIGHT) AND FORESTER S-EDITION.

GET ENTERTAINED
BY FORESTER AT
SUBARU.COM.AU

1. Bluetooth[®] is a registered trademark of Bluetooth SIG Inc. System operation ability is subject to Bluetooth[®] wireless technology specification of individuals phone.

Be seduced by the enticing glow of the Forester cabin. With comfort features and contemporary connectivity that invite you to plug in and breathe out. Relax and recharge. Knowing that you are in control.





LIVE GENEROUSLY

A generosity of space, cultivates a generosity of spirit. Maybe that's why Forester is Australia's favourite getaway vehicle. A luxurious SUV with a cult-like status and a passion that's contagious.



COMFORT ZONE

Forester delivers a level of interior comfort that belies its rugged performance, including leather¹ seats coupled with an eight-way power adjustable seat for the driver on Forester XS Premium, Forester 2.0D Premium, Forester XT Premium and Forester S-EDITION. Rear passengers can enjoy ample leg room, while the reclining rear seat function provides additional levels of comfort. Heater ducts in the rear are also standard and there's a retractable centre console, on all models except Forester X, which includes a handy tray with integrated cup holders.

Generous storage includes moulded door pockets with bottle holders front and rear, an overhead console sunglasses holder and a multi-functional centre console box with adjustable armrest (excluding models with dual range transmission).

TOP TO BOTTOM:

- ELECTRIC SUNROOF.²
- REAR RETRACTABLE CENTRE CUSHION TABLE WITH CUP HOLDERS.³
- SEAT BACK POCKETS - DRIVER AND FRONT PASSENGER - FORESTER XS PREMIUM, FORESTER XT PREMIUM, FORESTER S-EDITION AND FORESTER 2.0D PREMIUM.

STRETCH OUT AND
FEEL THE SPACE AT
SUBARU.COM.AU



1. Some parts of seating not full natural leather. 2. Forester XS Premium, Forester XT Premium, Forester S-EDITION and Forester 2.0D Premium. 3. All models excluding Forester X.



MODEL SHOWN: Forester S-EDITION



A WINNING PERFORMANCE

From the high performance turbocharged Subaru Boxer engine, to the sporty rear spoiler, the Forester XT, Forester XT Premium and the sensational STI enhanced Forester S-EDITION all share a common heritage. Thrilling performance. Distinguished by the choice of transmission styles to suit your driving.

- There's the effortless five-speed manual or the three-in-one four-speed automatic with everyday driving mode, sports mode or driver controlled manual mode in the Forester XT and Forester XT Premium.
- While the five-speed automatic transmission on the Forester S-EDITION can also be driven in manual mode using the paddle gear shift on the steering column.

The Forester S-EDITION is further differentiated by silver roof rails, STI alloy wheels, distinctive badging and STI enhanced sports suspension tuned for a more sporty ride and handling.

CLOCKWISE:

- LEATHER SEATS WITH BLUE ALCANTERA LEATHER INSERTS.¹
- SPORTY INSTRUMENT CLUSTER.¹
- STI ALLOY WHEELS.¹
- PADDLE GEAR SHIFT ON STEERING COLUMN.¹

DISCOVER THE
POWER AT
SUBARU.COM.AU

1. Forester S-EDITION model only.

SMOOTH OPERATOR

A smooth naturally-aspirated 2.5-litre Boxer engine drives Forester X, Forester XS and Forester XS Premium which feature the choice of a four-speed automatic transmission with manual mode or an effortless five-speed manual transmission.

While the Forester Diesel range comes with a 2.0-litre turbocharged Boxer diesel engine and an easy to drive, 6-speed manual transmission developed to deliver improved driveability and a quieter ride.

So whether you want outstanding highway performance or fuel efficient city driving, there's a Forester perfect for you.



ADVENTURE SEEKING

Direct from the mud, sweat and cheers of the world rally circuit, to your driveway. The Forester sports range has been race bred and fine tuned over hundreds of kilometres of gravel and bitumen. Rugged, yet refined. They are the restless and ambitious members of the Forester family.



THINK OUTSIDE THE BOXER

Solid. Brave. Proven. Subaru's Boxer engine design lies at the heart of the Forester. However the innovation doesn't stop there. Every inch of the Forester is a tribute to the boldness of Subaru's visionary engineers.



- Compact horizontally-opposed Boxer engine
 - Forester X, Forester XS and Forester XS Premium with 2.5 litre four-cylinder DOHC petrol engine with Active Valve Control System (AVCS).
 - Forester XT, and Forester XT Premium with 2.5 litre turbocharged, four-cylinder DOHC petrol engine with Active Valve Control System (AVCS).
 - Forester S-EDITION with 2.5 litre high-power turbocharged, four-cylinder DOHC petrol engine with Dual Active Valve Control System (DAVCS).
 - Forester 2.0 Diesel and 2.0 Diesel Premium with turbocharged, four-cylinder diesel DOHC engine.
- Electronic Throttle Control (ETC).

Consistent across the Forester range is the famous Subaru Boxer engine that has been designed to sit lower and flatter in the engine bay than traditional engines. Due to this unique positioning it delivers less noise and vibration to the cabin, while the lowered centre of gravity improves stability, cornering and traction with the road. Coupled with the Forester's symmetrical drivetrain, this configuration delivers superior handling confidence, better balance, smoothness and ultimately, outstanding driver enjoyment.

The intelligent drive systems incorporated into the Forester include ETC which seamlessly translates commands from the driver's right foot to automatically select the optimum throttle position for an effortless performance. The ETC system also considers the environment optimising exhaust gas emissions and fuel economy.

Each petrol engine in the Forester range has also been finely tuned to deliver optimum fuel economy, power and torque, via Subaru's Active Valve Control System.

GET THE
FACTS AT
SUBARU.COM.AU

GO FURTHER, DO MORE



1,000KM/1 TANK



MODEL SHOWN: Forester 2.0D

Pass the last roadhouse without a care in the world. One tank of diesel is all you need to get there – and back again. The grunty performance and legendary fuel economy all add up to a diesel that's All 4 the Driver.™

NO STOPPING

Whether you're exploring this wide brown land or roaring down the freeway, the turbocharged horizontally-opposed Boxer diesel engine means less stops and more fun. With outstanding fuel economy, and an extraordinary driving range, the Forester is capable of travelling over 1,000km¹ on a single tank. All while caring for the environment, by meeting EURO5 emissions standards.

The four-cylinder Double OverHead Cam engine delivers a spirited performance with strong pulling power, while the six-speed manual transmission lets you effortlessly select the right gear for the situation. With its distinctive bonnet scoop, the sporty Forester Diesel range comes in two variants including standard Forester 2.0D and Forester 2.0D Premium.

FIND OUT HOW YOU CAN
GO THE DISTANCE AT
SUBARU.COM.AU

1. Based on a highway cycle of 5.6L per 100km and fuel capacity of 65L tested in accordance with a ADR81/02.





ALL WHEELS,
ALL OF THE TIME

MODEL SHOWN: Forester X



Scientifically conceived. Rigorously tested for the last 40 years. Subaru's iconic Symmetrical All-Wheel Drive system is the pinnacle of superior Japanese technology. Technology that sets you free.



CONFIDENCE UNDER ALL CONDITIONS

The sign of a true performer, is good balance. And when it comes to driving a Subaru, superior balance equals superior vehicle control. That's why Subaru has built its reputation on its Symmetrical All-Wheel Drive (SAWD) system and a symmetrical drivetrain that deliver an innate sense of balance from the ground up.

SAWD delivers engine power to all four wheels simultaneously. Having power distributed across all four wheels, rather than two on conventional vehicles, gives you twice the grip capacity. So under acceleration there's more grip for cornering and more capacity to keep on track through the corners. Ultimately, having the driving force spread across all four wheels means greater control and confidence under all conditions.

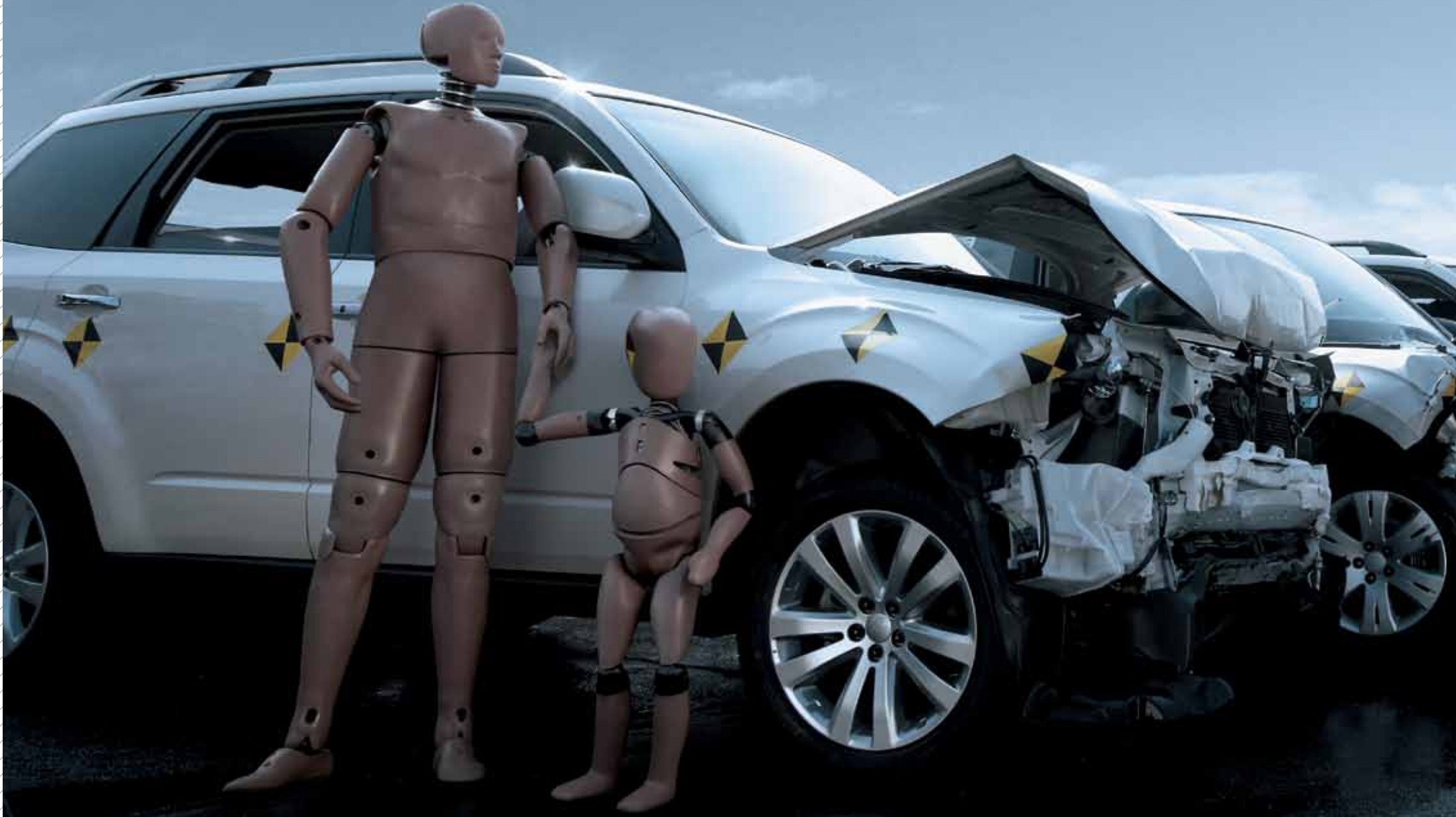
The traction and control delivered by SAWD is further enhanced by the Forester's suspension. The wide track front suspension produces more responsive steering and cornering, while the self-levelling double wishbone rear suspension (on all models excluding Forester X and Forester S-EDITION) ensures a consistent ride height and adjusts automatically depending on the cargo load.

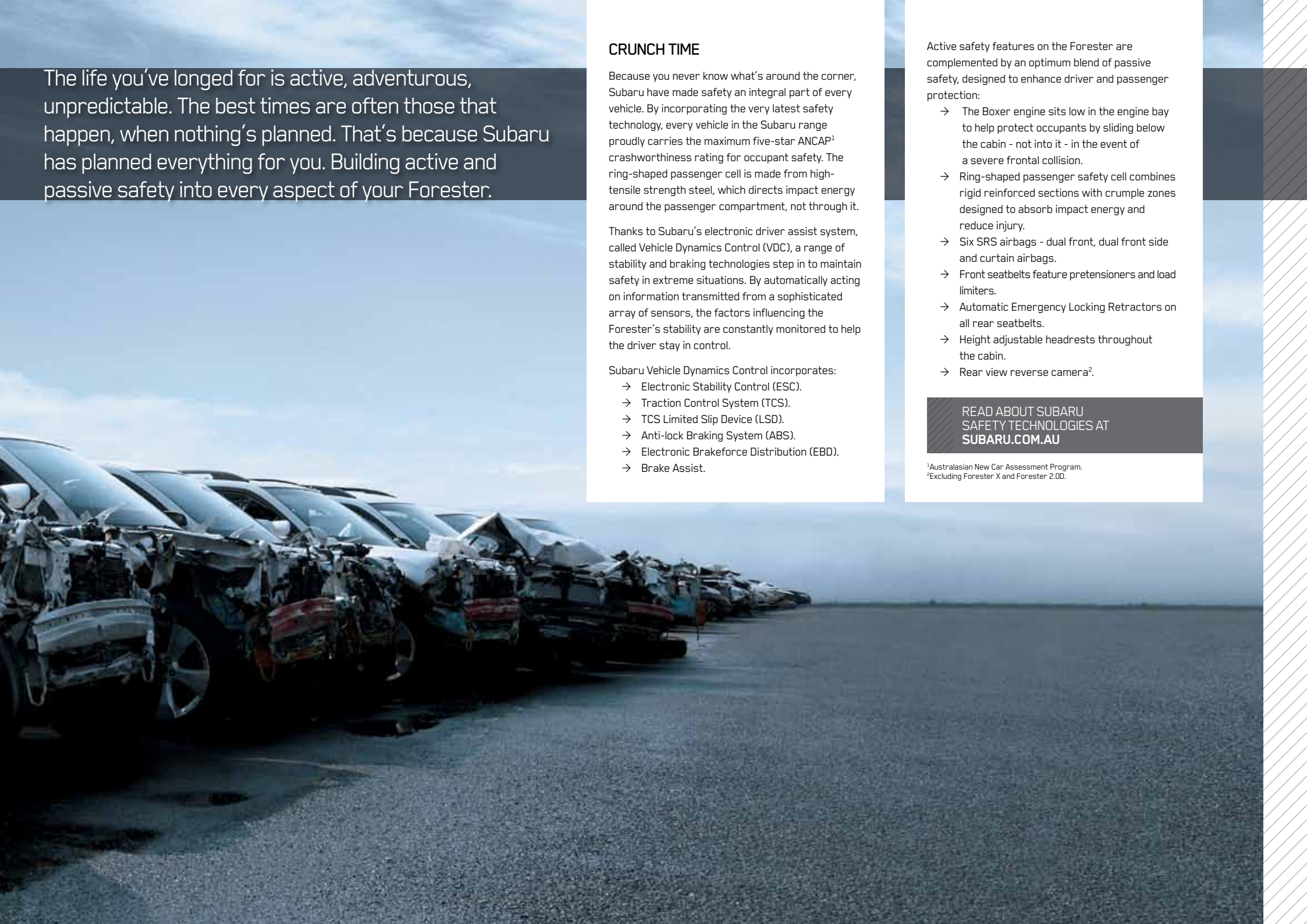
For you, the driver, it all adds up to an agile and responsive vehicle with optimum balance, control and confidence in a variety of driving conditions.

FIND OUT MORE
ABOUT SAWD AT
SUBARU.COM.AU



SAFETY AS ACTIVE AS YOU





The life you've longed for is active, adventurous, unpredictable. The best times are often those that happen, when nothing's planned. That's because Subaru has planned everything for you. Building active and passive safety into every aspect of your Forester.

CRUNCH TIME

Because you never know what's around the corner, Subaru have made safety an integral part of every vehicle. By incorporating the very latest safety technology, every vehicle in the Subaru range proudly carries the maximum five-star ANCAP¹ crashworthiness rating for occupant safety. The ring-shaped passenger cell is made from high-tensile strength steel, which directs impact energy around the passenger compartment, not through it.

Thanks to Subaru's electronic driver assist system, called Vehicle Dynamics Control (VDC), a range of stability and braking technologies step in to maintain safety in extreme situations. By automatically acting on information transmitted from a sophisticated array of sensors, the factors influencing the Forester's stability are constantly monitored to help the driver stay in control.

Subaru Vehicle Dynamics Control incorporates:

- Electronic Stability Control (ESC).
- Traction Control System (TCS).
- TCS Limited Slip Device (LSD).
- Anti-lock Braking System (ABS).
- Electronic Brakeforce Distribution (EBD).
- Brake Assist.

Active safety features on the Forester are complemented by an optimum blend of passive safety, designed to enhance driver and passenger protection:

- The Boxer engine sits low in the engine bay to help protect occupants by sliding below the cabin - not into it - in the event of a severe frontal collision.
- Ring-shaped passenger safety cell combines rigid reinforced sections with crumple zones designed to absorb impact energy and reduce injury.
- Six SRS airbags - dual front, dual front side and curtain airbags.
- Front seatbelts feature pretensioners and load limiters.
- Automatic Emergency Locking Retractors on all rear seatbelts.
- Height adjustable headrests throughout the cabin.
- Rear view reverse camera².

READ ABOUT SUBARU
SAFETY TECHNOLOGIES AT
SUBARU.COM.AU

¹Australasian New Car Assessment Program.
²Excluding Forester X and Forester 2.0D.

OUR SERVICE PROMISE:

WE ARE ALL **BORN FREE** BUT STAYING FREE,
THAT'S THE HARD PART.

ONCE YOU GET USED TO GOING ANYWHERE
- **AND DOING ANYTHING** -
YOU CAN **NEVER GO BACK.**

THAT **FREEDOM** IS SOMETHING YOU NEED TO **HOLD ON TO.**
SOMETHING TO **GRAB** WITH BOTH HANDS.
REMEMBER, YOU STILL HAVE CORNERS, COUNTRIES,
AND CONTINENTS **TO CONQUER.**

WE ARE YOUR **GUARDIANS OF FREEDOM.**
THIS IS YOUR **PRIDE AND JOY.**
LOVE IT, LOOK AFTER IT AND IT'LL LOOK AFTER YOU IN RETURN.

IT TOOK THE FINEST MINDS IN JAPAN TO BUILD
THIS INCREDIBLE VEHICLE.
?? WHY LET JUST ANYONE TINKER WITH IT ??

ENTRUST IT ONLY TO THOSE YOU **TRUST MOST.**

YOU CAN'T PUT A PRICE ON **FREEDOM,**
BUT CONFIDENCE IS **SURPRISINGLY AFFORDABLE.**



WE WILL PROTECT YOUR FREEDOM.

TAKE TO THE ROAD WITH THE KNOWLEDGE THAT YOU HAVE THE EXPERIENCE AND SUPPORT OF SUBARU BEHIND YOU.

SUBARU GENUINE SERVICE

Entrust your Subaru only to those who know it best. They are the Subaru technicians who are passionate about maintaining your freedom and who train year after year until they know your vehicle inside out. Using specialist diagnostic equipment and Subaru Genuine Parts, they are committed to keeping your Subaru **performing** at its best. Delivering freedom from worry, while ensuring the **safety** of your family and the long-term **retained value** of your vehicle.

SUBARU NEW CAR WARRANTY - THREE YEARS / UNLIMITED KILOMETRES

Whether you're off the beaten track or cruising the open highway, you can rest assured knowing that your new Subaru is covered by a three year unlimited kilometre manufacturer's national warranty. That's three full years of worry free driving! For full details and our latest new car warranty information, visit subaru.com.au/service/warranty

But why stop there, when you're sure to have your Subaru for much longer? Protect your investment by purchasing an additional two year Subaru Assured New Vehicle Warranty. Ask your Subaru Retailer for more information.

SUBARU ASSURED USED VEHICLES

Owning a Subaru that has already traversed highways and byways is like travelling with an old friend. Every Subaru Assured Used Vehicle has passed a 116-point quality inspection and comes with a one year unlimited kilometre Subaru Assured Warranty - to complement the balance of a new vehicle warranty or the statutory warranty that remains - from participating Subaru Assured Retailers.

SUBARU PREFERRED COLLISION REPAIRER NETWORK

When you take the road less travelled, you're going to get wet and you're going to get dirty. But should you put a dent in your freedom, there is a dedicated Subaru Preferred Collision Repairer helpline available on 1800 737 179, 24-hours a day, seven days a week. Plus the national network of appointed Subaru Preferred Collision Repairers, can return your Subaru to its former glory.

DATADOT_{DNA}[®]

Every Subaru is fitted with advanced engine immobilisers and DATADOT_{DNA}[®] technology. Approximately 7,000 microscopic dots are laser-etched with your vehicle's unique Vehicle Identification Number - making your Subaru a much less attractive target for potential thieves. In fact, provided you meet certain terms and conditions (such as a requirement that the vehicle is properly registered and comprehensively insured at the time of theft) DATADOT_{DNA}[®] will even pay your insurance excess (up to a maximum of \$800 incl GST) should your new Subaru be stolen in the first year of ownership and the vehicle is not recovered despite the presence of DATADOT_{DNA}[®] and warning labels¹.

1. Claims must be received from the vehicle's registered owner within 45 days of the theft accompanied by a police report in relation to the theft and proof that the insurer has fully paid out the claim.

SUBARU FINANCE

Relax with Subaru Finance and enjoy your freedom faster with our range of personalised and affordable financial solutions to approved customers. Our finance specialists will help you find a finance package that is tailored to your individual needs - quickly and conveniently. So let Subaru Finance do the work for you, it's what we do best.

SUBARU INSURANCE

Freedom is limitless. So why keep your car in the garage? Explore your freedom, but also protect it. There is a range of Subaru Insurance options that offer features and benefits to complement your Subaru, including:
→ Subaru Comprehensive Motor Vehicle Insurance
→ Subaru Motor Equity Insurance
→ Subaru Loan Protection Insurance

SUBARU LIFESTYLE

You wear your freedom like a badge of honour and now you can embrace all things Subaru with our range of quality merchandise. To see the entire Subaru merchandise range, visit shop.subaru.com.au, or ask your local authorised Subaru Retailer.

BEING A SUBARU OWNER COMES WITH MANY GREAT BENEFITS.
VISIT SUBARU.COM.AU TO SEE THE BENEFITS AVAILABLE TO YOU.

FORESTER AWARDS

- 2010 - Australia's best selling compact SUV, VFACTS 2008, 2009, 2010
- 2009 - Best Compact SUV - Carsales Network People's Choice Award 2009, Subaru Forester
- 2008 - Best Compact SUV - Carsales Network People's Choice Award 2008, Subaru Forester
 - People's Choice Award - Drive 2008, Subaru Forester
 - Australasian New Car Assessment Program (ANCAP) five-star occupant safety rating for the entire Forester range
 - International Engine of the Year Award, 2.0 - 2.5-litre class, Subaru Forester XT (2.5-litre turbocharged horizontally-opposed Boxer engine)
- 2006 - International Engine of the Year Award, 2.0 - 2.5-litre class, Subaru Forester XT (2.5-litre turbocharged horizontally-opposed Boxer engine)
- 2004 - Australasian New Car Assessment Program (ANCAP) five-star occupant safety rating for the entire Forester range
 - Queensland Country Life, Queensland Country and Recreational Car of the Year, Subaru Forester XT
- 2003 - Australia's Best Cars, Best Recreational 4 Wheel Drive, Subaru Forester X
 - Australasian New Car Assessment Program (ANCAP) five-star occupant safety rating for the Forester XS Luxury (the best-ever rating for a compact ATW)
- 2002 - Australia's Best Cars, Best Recreational 4-Wheel Drive, Subaru Forester X
 - The Courier Mail, Queensland Car of the Year, Outstanding Recreational Vehicle, Subaru Forester X
- 2001 - Australia's Best Cars, Best Recreational Vehicle Under \$45,000, Subaru Forester Limited
 - The Courier Mail, Queensland Car of the Year, Outstanding Recreational Vehicle, Subaru Forester
- 2000 - Australia's Best Cars, Best Recreational Vehicle, Subaru Forester
 - 4x4 Australia, Best All-Wheel Drive, Subaru Forester
 - The Courier Mail, Queensland Car of the Year, Outstanding Recreational Vehicle, Subaru Forester
- 1999 - RACT Best Cars, TAS, Best Recreational Vehicle & Overall Winner, Subaru Forester
 - RACQ/The Courier Mail, QLD, Q-Car 1999, Best Recreational Vehicle & Overall Winner, Subaru Forester

subaru.com.au

Subaru (Aust) Pty Limited ABN 95 000 312 792 (Subaru Australia)
Level 3, 4 Burbank Place, Baulkham Hills NSW 2153. Toll Free: 1800 226 643
Subaru Australia reserves the right to vary vehicle specifications and standard features in Australia from those detailed in this brochure.
Vehicles shown in this brochure may be fitted with accessories available at additional cost.
No part of the brochure can be reproduced without written permission from Subaru Australia. Printed in Australia.
© Copyright 2011 - Subaru (Aust) Pty Limited. All rights reserved.

ALL 4 THE DRIVER™



FORESTER

SPECIFICATIONS | MODEL YEAR 2012



ALL 4 THE DRIVER™



SUBARU

KEY FEATURES

FORESTER X



PERFORMANCE

- Symmetrical All-Wheel Drive
- Engine: 2.5-litre horizontally-opposed Boxer engine
- Transmission: 5-speed manual or 4-speed automatic with manual mode
- Maximum power output: 126kW@5800rpm
- Maximum torque: 235Nm@4100rpm

EXTERIOR

- 16" steel wheels
- Dual tail pipe
- Roof rails
- 220mm ground clearance

INTERIOR

- Air-conditioning
- Cargo luggage hooks
- Seat trim cloth - (choice of black or grey)
- Steering wheel audio, cruise and Bluetooth^{®1} controls

ENTERTAINMENT / TECHNOLOGY

- Single in-dash CD player featuring:
 - AM/FM radio
 - 4 speakers
 - MP3/WMA/iPod compatibility
- Bluetooth^{®1} wireless technology with:
 - Handsfree mobile communication
 - Audio streaming²

FORESTER XS



PERFORMANCE

- Symmetrical All-Wheel Drive
- Engine: 2.5-litre horizontally-opposed Boxer engine
- Transmission: 5-speed manual or 4-speed automatic with manual mode
- Maximum power output: 126kW@5800rpm
- Maximum torque: 235Nm@4100rpm

EXTERIOR

- 17" alloy wheels
- Body coloured mirrors with indicator lights
- Front fog lights
- 220mm ground clearance

INTERIOR

- Air-conditioning - climate control
- Seat trim cloth - (choice of black or grey)

- Steering wheel audio, cruise and Bluetooth^{®1} controls

ENTERTAINMENT / TECHNOLOGY

- Single in-dash CD player featuring:
 - AM/FM radio
 - 6 speakers plus a subwoofer
 - MP3/WMA/iPod compatibility
 - 4.3" LCD⁵ display screen
- Bluetooth^{®1} wireless technology with:
 - Handsfree mobile communication
 - Audio streaming²
- Rear view reverse camera

FORESTER XS PREMIUM



FORESTER XS PREMIUM:

Additional features over Forester XS

- Electric sunroof
- Seat trim leather³ - (choice of black or grey)
- 8-way power seat - driver

OPTIONAL

- Multi-information in-dash satellite navigation system featuring:
 - AM/FM radio
 - Single CD/DVD⁴ player
 - 6 speakers plus a subwoofer
 - MP3/WMA/iPod compatibility
 - 7" touch screen
 - RCA jacks

FORESTER XT



PERFORMANCE

- Symmetrical All-Wheel Drive
- Engine: 2.5-litre turbocharged horizontally-opposed Boxer engine
- Transmission: 5-speed manual or 4-speed automatic with manual mode
- Maximum power output: 169kW@5200rpm
- Maximum torque: 320Nm@2800rpm

EXTERIOR

- 17" alloy wheels
- Bonnet scoop
- Rear spoiler
- Self-levelling Xenon low beam headlights
- Tail pipe covers
- 225mm ground clearance

INTERIOR

- Air-conditioning - dual zone climate control
- Electroluminescent gauges

- Seat trim cloth - (choice of black or grey)
- Sports pedals

ENTERTAINMENT / TECHNOLOGY

- Single in-dash CD player featuring:
 - AM/FM radio
 - 6 speakers plus a subwoofer
 - MP3/WMA/iPod compatibility
 - 4.3" LCD⁵ display screen
- Bluetooth^{®1} wireless technology with:
 - Handsfree mobile communication
 - Audio streaming²
- Rear view reverse camera

FORESTER XT PREMIUM



FORESTER XT PREMIUM:

Additional features over Forester XT

- Electric sunroof
- Seat trim leather³ - (choice of black or grey)
- 8-way power seat - driver
- Multi-information in-dash satellite navigation system featuring:

- AM/FM radio
- Single CD/DVD⁴ player
- 6 speakers plus a subwoofer
- MP3/WMA/iPod compatibility
- 7" touch screen
- RCA jacks

1. Bluetooth[®] is a registered trademark of Bluetooth SIG Inc. System operation ability is subject to the Bluetooth[®] wireless technology specification of individual's phone. 2. There may be restrictions on features available for certain models that are not fully compliant with AVCRP. 3. Some parts of the seating are not full natural leather. 4. DVD only operates when vehicle is stationary. 5. Information display and operation ability is subject to compatibility of the Bluetooth[®] audio device to AVCRP and some functions may be restricted.

FORESTER 2.0D



PERFORMANCE

- Symmetrical All-Wheel Drive
- Engine: 2.0-litre turbocharged horizontally-opposed diesel Boxer engine
- Transmission: 6-speed manual
- Maximum power output: 108kW@3600rpm
- Maximum torque: 350Nm@1600-2400rpm

EXTERIOR

- 16" alloy wheels
- Bonnet scoop
- Front fog lights
- Roof rails
- 215mm ground clearance

INTERIOR

- Air-conditioning - climate control
- Cargo luggage hooks
- Seat trim cloth - (choice of black or grey)
- Steering wheel audio, cruise and Bluetooth®1 controls

ENTERTAINMENT / TECHNOLOGY

- Single in-dash CD player featuring:
 - AM/FM radio
 - 4 speakers
 - MP3/WMA/iPod compatibility
- Bluetooth®1 wireless technology with:
 - Handsfree mobile communication
 - Audio streaming²

FORESTER 2.0D PREMIUM



FORESTER 2.0D PREMIUM:

Additional features over Forester 2.0D

- 17" alloy wheels
- Air-conditioning - dual zone climate control
- Electric sunroof
- Electroluminescent gauges
- Rear view reverse camera
- Seat trim leather³ - (choice of black or grey)
- Self-levelling Xenon low beam headlights
- 8-way power seat - driver

OPTIONAL

- Multi-information in-dash satellite navigation system featuring:
 - AM/FM radio
 - Single CD/DVD⁴ player
 - 6 speakers plus a subwoofer
 - MP3/WMA/iPod compatibility
 - 7" touch screen
 - RCA jacks⁵

S-EDITION FORESTER



PERFORMANCE

- Symmetrical All-Wheel Drive
- Engine: 2.5-litre turbocharged horizontally-opposed Boxer engine
- Transmission: 5-speed automatic with manual mode
- Maximum power output: 193kW@6000rpm
- Maximum torque: 347Nm@2800-4800rpm

EXTERIOR

- 17" 12 spoke STI alloy wheels
- Aggressive front grille
- Bonnet scoop
- Electric sunroof
- Rear spoiler
- Self-levelling Xenon low beam headlights
- Silver roof rails
- 225mm ground clearance

INTERIOR

- Air-conditioning - dual zone climate control
- Electroluminescent gauges
- Front footwell lights
- Leather steering wheel
- Paddle gear shift on steering column
- Seat trim leather² - with blue Alcantara leather inserts and embroidered logo
- Sports pedals
- 8-way power seat - driver

ENTERTAINMENT / TECHNOLOGY

- Multi-information in-dash satellite navigation system featuring:
 - AM/FM radio
 - MP3/WMA/iPod compatibility
 - Single CD/DVD⁴ player
 - 7" touch screen
 - 6 speakers plus subwoofer
- RCA jacks⁵
- Bluetooth®1 wireless technology with:
 - Handsfree mobile communication
 - Audio streaming²
- Rear view reverse camera

1. Bluetooth® is a registered trademark of Bluetooth SIG Inc. System operation ability is subject to the Bluetooth® wireless technology specification of individual's phone. 2. There may be restrictions on features available for certain models that are not fully compliant with AVCRP. Audio streaming is not available if factory satellite navigation is fitted. 3. Some parts of the seating are not full natural leather. 4. DVD only operates when vehicle is stationary. 5. RCA jacks replace auxiliary jack and USB connection when factory satellite navigation is fitted.

TECHNICAL SPECIFICATIONS¹ - FORESTER RANGE

MODEL		X	XS	XS Premium	XT	XT Premium	S-EDITION	2.0D	2.0D Premium	
TRANSMISSION										
5-speed manual transmission		•	•	•	•	•				
6-speed manual transmission								•	•	
4-speed automatic transmission with manual mode		•	•	•	•	•				
5-speed automatic transmission with manual mode							•			
ENGINE										
Engine type		Horizontally-opposed Boxer 4-cylinder, petrol engine			Turbocharged horizontally-opposed Boxer 4-cylinder, petrol engine			Turbocharged horizontally-opposed Boxer 4-cylinder, diesel engine		
Valve mechanism		DOHC with AVCS							DOHC	
Bore x stroke	mm	94 x 90			99.5 x 79.0			86 x 86		
Capacity	cc	2498			2457			1998		
Compression ratio		10			8.4			16.0		
Fuel tank capacity	litres	60							64	
Fuel system		Multi point sequential injection						Common rail direct injection		
Fuel requirement	RON	90-98			95 minimum			Diesel		
PERFORMANCE²										
Maximum power output (DIN)	kW/rpm	126kW@5800rpm			169kW@5200rpm		193kW@6000rpm	108kW@3600rpm		
Maximum torque (DIN)	Nm/rpm	235Nm@4100rpm			320Nm@2800rpm		347Nm@2800-4800rpm	350Nm@1600-2400rpm		
Maximum speed in top gear	km/h	198 (MT) / 185 (AT)			210 (MT) / 207 (AT)		228	186		
Acceleration ³ 0 - 100 km/h	seconds	9.2 (MT) / 10.2 (AT)			7.1 (MT) / 7.9 (AT)		6.5	10.4		
Electronic Throttle Control system (ETC)		Drive-by-wire								
Fuel consumption (ADR81/02) ⁴	combined l/100km	9.3			10.5			6.0		
	urban l/100km	12.9 (MT) / 12.5 (AT)			14.4 (MT) / 14.5 (AT)		14.8	7.2		
	extra urban l/100km	7.2 (MT) / 7.5 (AT)			8.2		7.9	5.3		
CO ₂ emissions (ADR81/02)	combined (g/km)	220			248			158		
Emission standards		EURO4						EURO5		
SYMMETRICAL ALL-WHEEL DRIVE										
Type	Manual	Centre Differential with a Viscous Limited Slip Differential					n/a	Centre Differential with a Viscous Limited Slip Differential		
Type	Auto	Active Torque Split					Variable Torque Distribution	n/a		
TRANSMISSION										
Gear ratio	1st	3.454 (MT) / 2.785 (AT)				3.540	3.454			
	2nd	2.062 (MT) / 1.545 (AT)			1.947 (MT) / 1.545 (AT)		2.264	1.750		
	3rd	1.448 (MT) / 1.000 (AT)			1.366 (MT) / 1.000 (AT)		1.471	1.062		
	4th	1.088 (MT) / 0.694 (AT)			0.972 (MT) / 0.694 (AT)		1.000	0.785		
	5th	0.780 (MT)			0.738 (MT)		0.834	0.634		
	6th	n/a							0.557	
Gear ratio - reverse		3.333 (MT) / 2.272 (AT)				2.370	3.636			
Final reduction gear ratio		4.111 (MT) / 4.444 (AT)			4.444 (MT) / 4.111 (AT)		3.272	4.444		
Dual range reduction ratio		1.196 (MT)			n/a					
STEERING										
Steering		Engine speed sensitive power assisted rack and pinion						Electric power steering		
Minimum turning circle (kerb to kerb)	m	10.5								
SUSPENSION										
Type	Front	McPherson strut type, independent suspension								
	Rear	Double wishbone type, independent suspension	Self-levelling double wishbone type, independent suspension				Double wishbone type, independent suspension	Self-levelling double wishbone type, independent suspension		
BRAKES										
Type	Front	Ventilated disc brake								
	Rear	Solid disc brake								
Brake booster type		Tandem								
ABS		4-channel, 4-sensor ABS with Electronic Brakeforce Distribution								
WHEELS AND TYRES										
Tyre manufacturer		Bridgestone			Yokohama			Bridgestone	Yokohama	
Tyres (width, profile, size, load index and speed rating)		215/65 R16 98H			225/55 R17 97V			215/65 R16 98H	225/55 R17 97V	
Rim size		16x6.5JJ			17x7JJ			16x6.5JJ	17x7JJ	
Wheels		16"			17"			16"	17"	
Spare wheel		16"			17"			16"	17"	
MEASUREMENT										
Overall length	mm	4560								
Overall width	mm	1795								
Overall height	mm	1700								
Wheel base	mm	2615								
Front track	mm	1530								
Rear track	mm	1530								
Minimum ground clearance ⁵	mm	220			225			215		
Cargo volume - rear seat up/down	litres	450/1660		450/1610	450/1660	450/1610		450/1660	450/1610	
Kerb weight ⁶	kg	1475 (MT)/1490 (AT)	1480 (MT)/1495 (AT)	1505 (MT)/1520 (AT)	1510 (MT)/1525 (AT)	1545 (MT)/1560 (AT)	1585	1560	1595	
Tare mass ⁶	kg	1435 (MT)/1450 (AT)	1440 (MT)/1455 (AT)	1465 (MT)/1480 (AT)	1470 (MT)/1485 (AT)	1505 (MT)/1520 (AT)	1545	1520	1555	
Seating capacity		5								
TOWING										
With trailer brakes	kg	1400			1600					
Without trailer brakes	kg	750								
Maximum tow ball down load	kg	140			160					

1. Subaru Australia reserves the right to change mechanical specification and equipment levels without notice. 2. All performance data measured using 95RON/Diesel as required by Australian Design Rule 81/02. Vehicles tested in accordance with ADR81/02.3. Acceleration test performed under controlled conditions. 4. Fuel consumption figures calculated in accordance with Australian Design Rule 81/02.5. Ground clearance at kerb weight. 6. Vehicle kerb weight and tare mass varies according to the types of optional equipment included.

MODEL	X	XS	XS Premium	XT	XT Premium	S-EDITION	2.0D	2.0D Premium
ENTERTAINMENT								
Single in-dash CD player featuring:	•	•	•	•			•	•
AM/FM radio	•	•	•	•			•	•
4 speakers	•						•	
6 speakers plus a subwoofer		•	•	•				•
MP3/WMA/iPod compatible	•	•	•	•			•	•
4.3" LCD ⁸ display screen		•	•	•				•
Multi-information in-dash satellite navigation system featuring:			optional		•	•		optional
AM/FM radio			optional		•	•		optional
MP3/WMA/iPod compatible			optional		•	•		optional
Single CD/DVD ⁹ player			optional		•	•		optional
6 speakers plus subwoofer			optional		•	•		optional
7" touch screen			optional		•	•		optional
Bluetooth ^{®5} wireless technology with:	•	•	•	•	•	•	•	•
Handsfree mobile communication	•	•	•	•	•	•	•	•
Audio streaming ¹⁰	•	•	• ¹⁰	•			•	• ¹⁰
Auxiliary jack ¹¹ - front centre console	•	•	• ¹¹	•			•	• ¹¹
USB connection ¹¹ - front centre console	•	•	• ¹¹	•			•	• ¹¹
RCA jacks ¹² (with factory fitted satellite navigation)			Replaces auxiliary jack and USB connection when optional factory satellite navigation is fitted			•	•	Replaces auxiliary jack and USB connection when optional factory satellite navigation is fitted
WARRANTY								
3 year/unlimited km warranty	•	•	•	•	•	•	•	•

1. Subaru Australia reserves the right to change mechanical specification and equipment levels without notice. 2. The Australasian New Car Assessment Program (ANCAP) gives consumers consistent information on the level of occupant protection provided by vehicles in serious front and side crashes. 3. SRS: Supplemental Restraint System. Effective when used in conjunction with seat belts. 4. Instrument cluster includes speedometer, tachometer, trip computer, fuel gauge, AT select indicator (automatic models only), cruise control indicator, high beam indicator and front fog light indicator. 5. Bluetooth[®] is a registered trademark of Bluetooth SIG Inc. System operation ability is subject to the Bluetooth[®] wireless technology specification of individual's phone. 6. Manual models with dual range transmission come with one cupholder, other models with two cupholders. 7. Some parts of the seating are not full natural leather. 8. Information display and operation ability is subject to compatibility of the Bluetooth[®] audio device to AVCRP and some functions may be restricted. 9. DVD only operates when vehicle is stationary. 10. There may be restrictions on features available for certain models that are not fully compliant with AVCRP. Audio streaming is not available if factory satellite navigation is fitted. 11. Auxiliary jack and USB connection not available if factory satellite navigation is fitted. 12. RCA jacks replace auxiliary jack and USB connection when factory satellite navigation is fitted.

INTERIOR

TRIM COLOUR



GREY:
Cloth: Forester X, Forester XS, Forester XT and Forester 2.0D
Leather: Forester XS Premium, Forester XT Premium and Forester 2.0D Premium



BLACK:
Cloth: Forester X, Forester XS, Forester XT and Forester 2.0D
Leather: Forester XS Premium, Forester XT Premium and Forester 2.0D Premium

TRIM PANELS



BLUE ALCANTARA LEATHER INSERTS:
Leather: Forester S-EDITION only



SILVER:
Forester X, Forester XT, Forester XT Premium, Forester 2.0D, Forester 2.0D Premium and Forester S-EDITION



WOODGRAIN:
Forester XS, and Forester XS Premium

ENTERTAINMENT



SINGLE IN-DASH CD AUDIO UNIT:
Forester X and Forester 2.0D



SINGLE IN-DASH CD AUDIO UNIT WITH LCD DISPLAY SCREEN:
Forester XS, Forester XS Premium, Forester XT and Forester 2.0D Premium



MULTI-INFORMATION IN-DASH SATELLITE NAVIGATION SYSTEM:
Forester XT Premium and Forester S-EDITION
OPTIONAL FOR:
Forester XS Premium and for Forester 2.0D Premium

A HUE THAT'S YOU

One of the final choices – but one of the most important! The colour you choose for your Forester makes a bold statement about who you are. So we've made sure you've got lots of ways to express yourself – with a wide range of colours to make your Forester more... you.



SATIN WHITE PEARL



SKY BLUE METALLIC¹



ICE SILVER METALLIC



MARINE BLUE METALLIC



SAGE GREEN METALLIC¹



DARK GREY METALLIC



CAMELLIA RED PEARL



OBSIDIAN BLACK PEARL

1. Not available on Forester XT or Forester S-EDITION models.